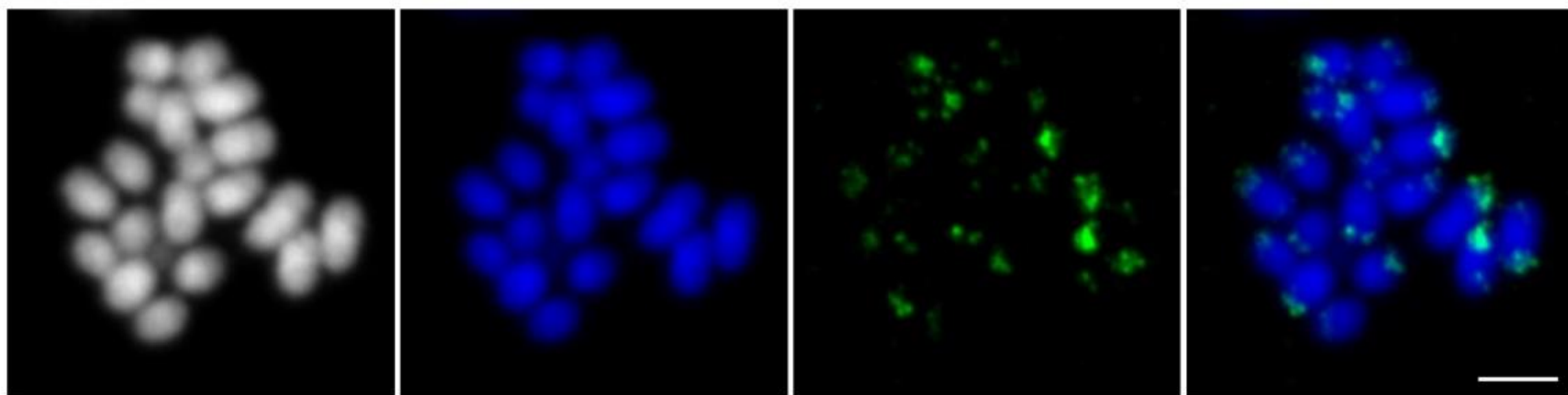
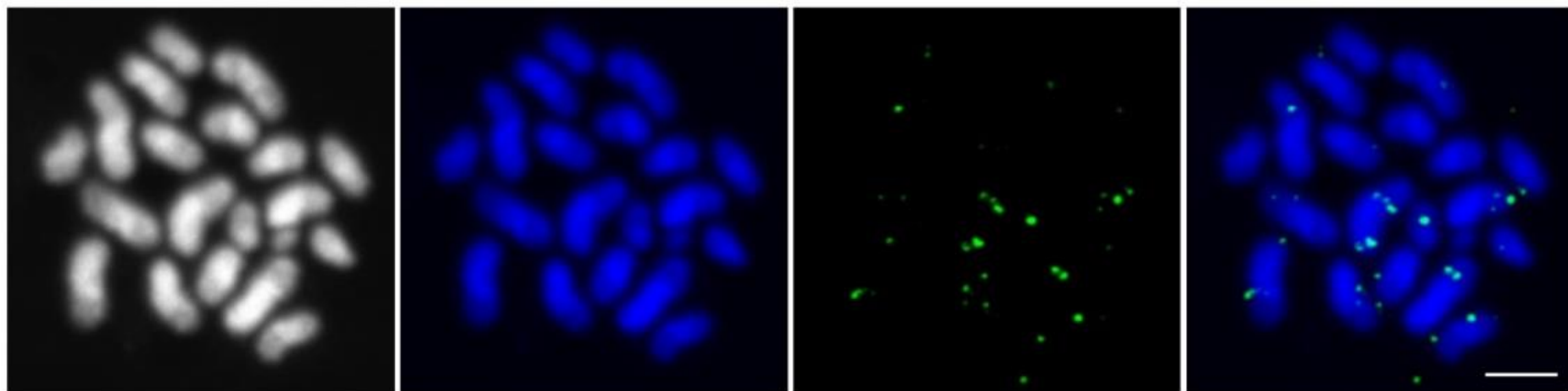


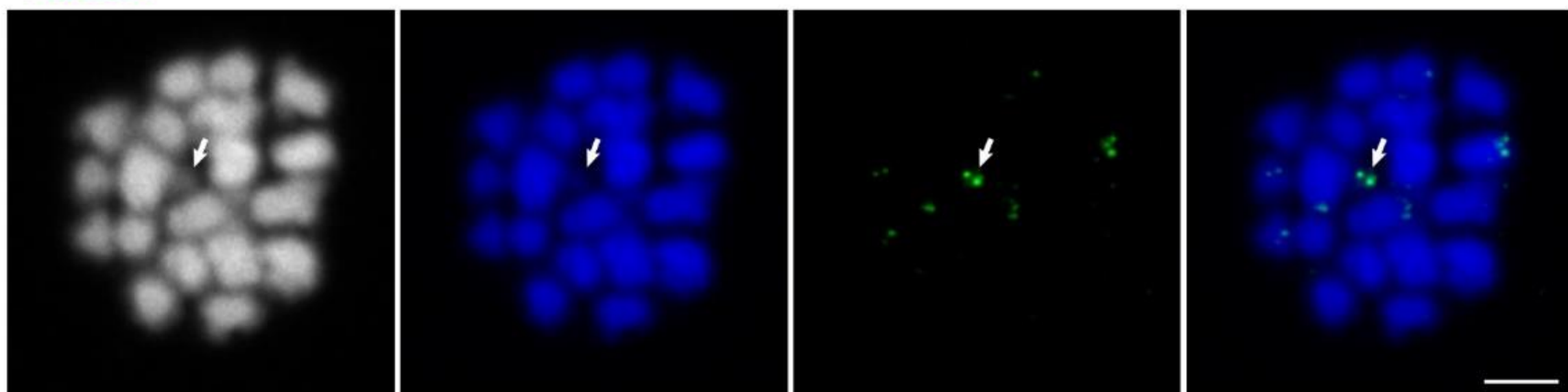
A) **TfSat05**



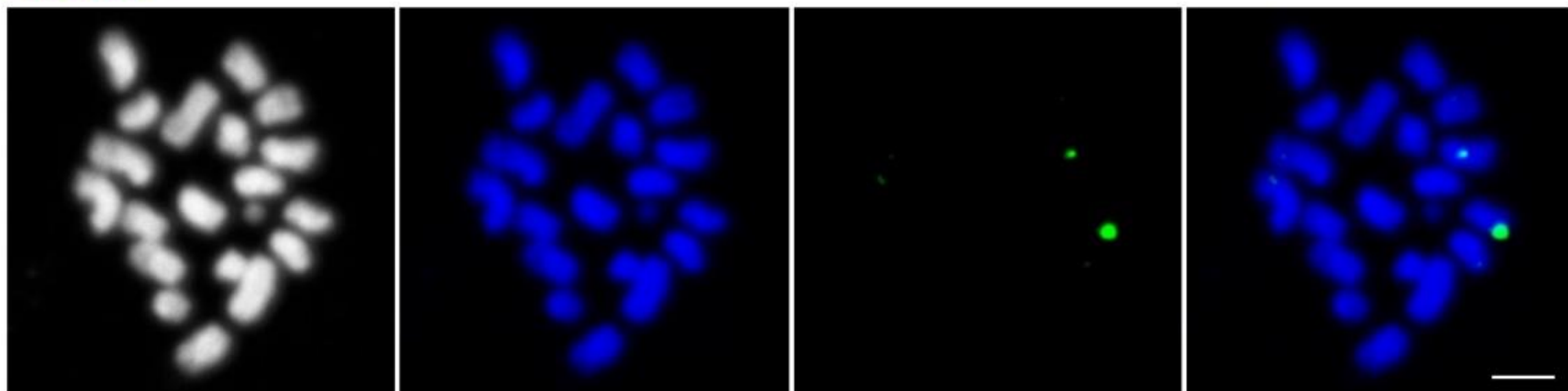
B) **TfSat06**



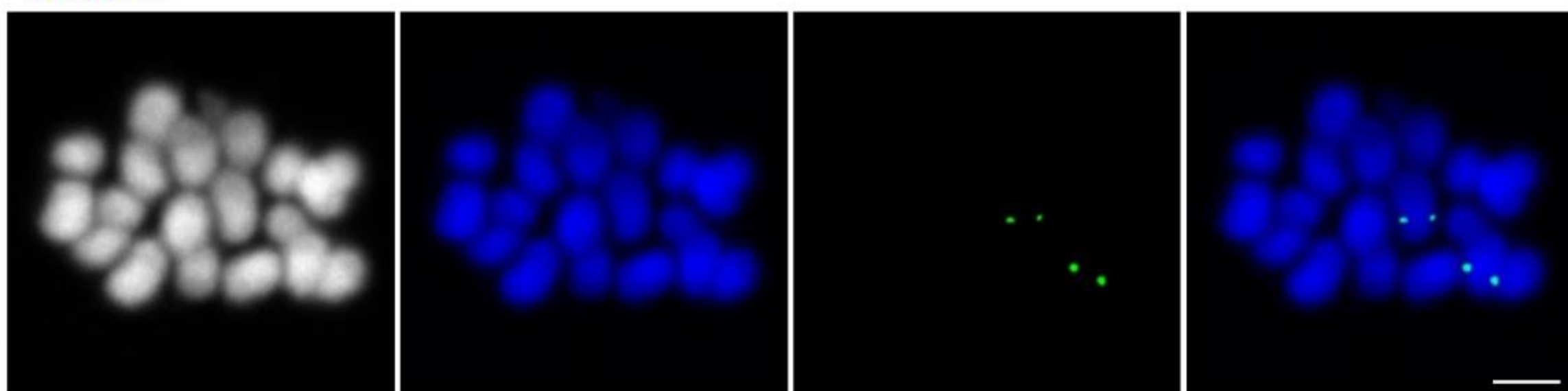
C) **TfSat07**



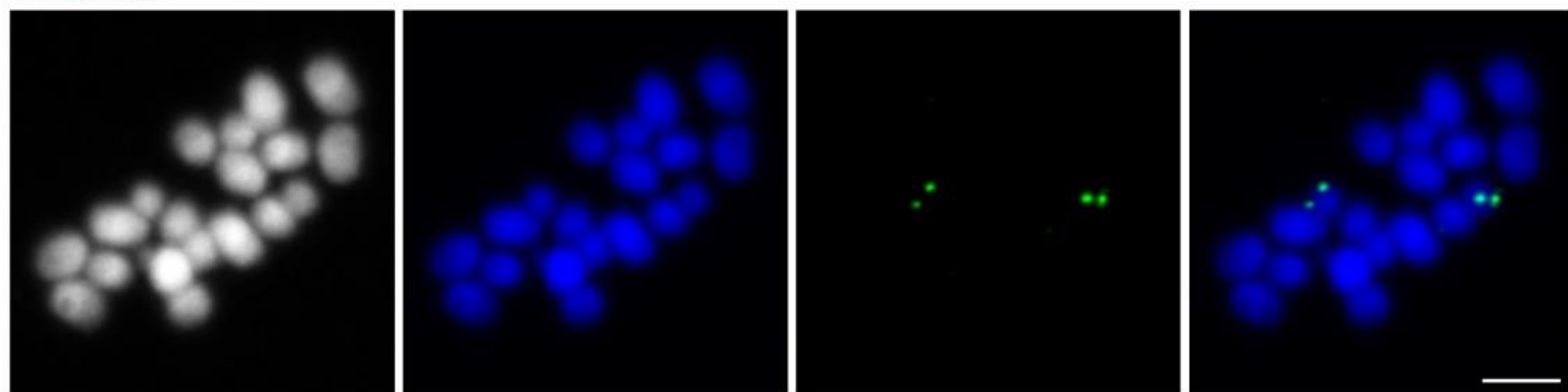
D) **TfSat08**



E) **TfSat09**



F) **TfSat10**



Supplemental Figure S3. Localization of *TfSat05* (A), *TfSat06* (B), *TfSat07* (C), *TfSat08* (D), *TfSat09* (E) and *TfSat10* (F) satDNAs on *T. freemani* chromosomes (2n=20), determined by fluorescence *in situ* hybridization. Chromosomes were stained with 4',6-diamidino-2-phenylindole (DAPI) and hybridized with satDNA probes visualized by fluorescein isothiocyanate (FITC). For each satDNA localization, chromosomes are shown in black-and-white (first panel) and in DAPI-stained version (second panel). The position of a satDNA-specific probe is indicated by green fluorescence in the third panel, while the fourth panel shows a merge of DAPI-stained chromosomes and FITC-visualized satDNA probes. For satDNA *TfSat07* (C), the position of the signals on the male Chromosome y_p is indicated by an arrow. The scale bar corresponds to 3 μ m.