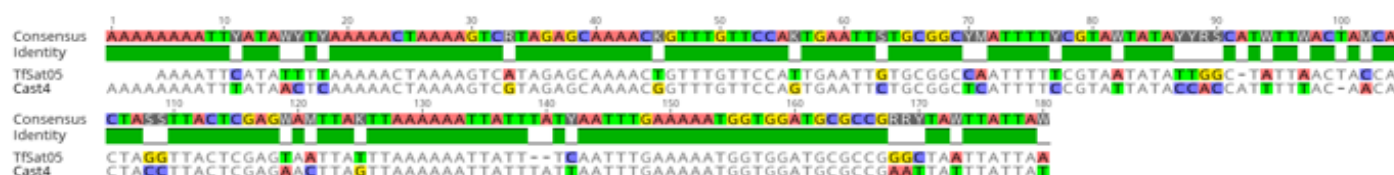


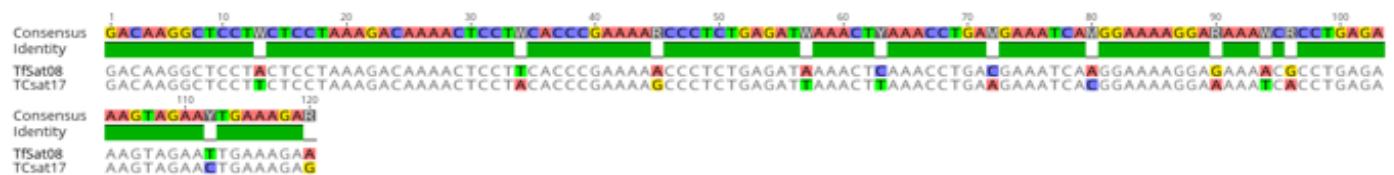
1) TfSat05 - Cast4 (pairwise identity: 80.7%)



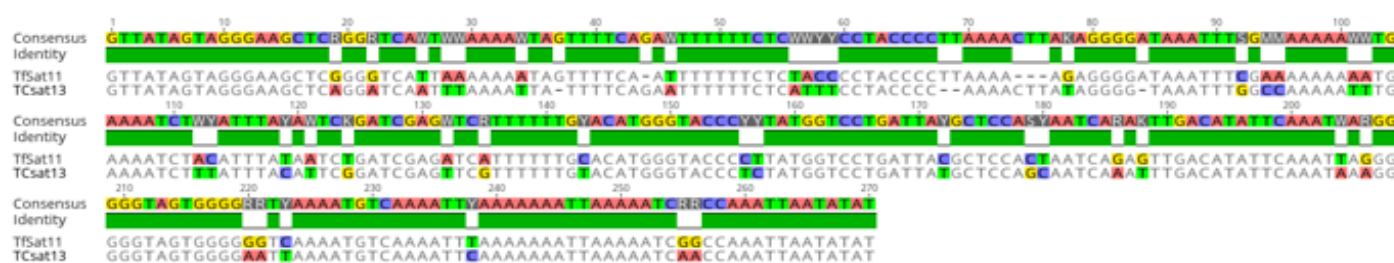
2) TfSat07 – Cast8 (pairwise identity: 81.5%)



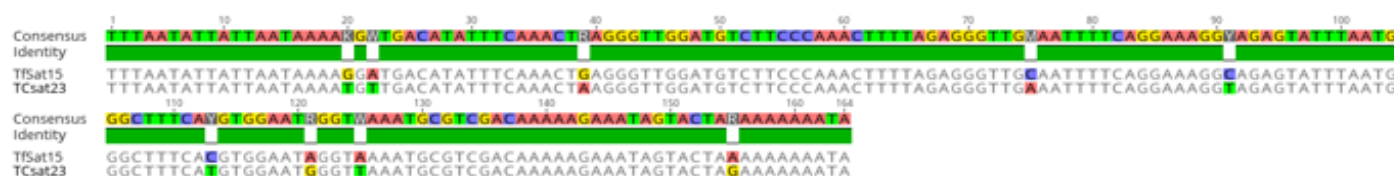
3) TfSat08 – Tcsat17 (pairwise identity: 90.0%)



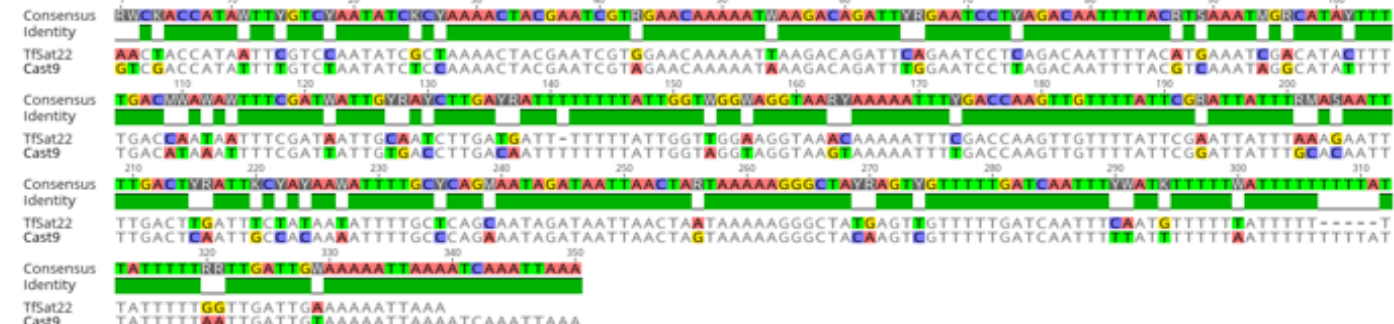
4) TfSat11 – Tcsat13 (pairwise identity: 82.2%)



5) TfSat15 – Tcsat23 (pairwise identity: 94.5%)



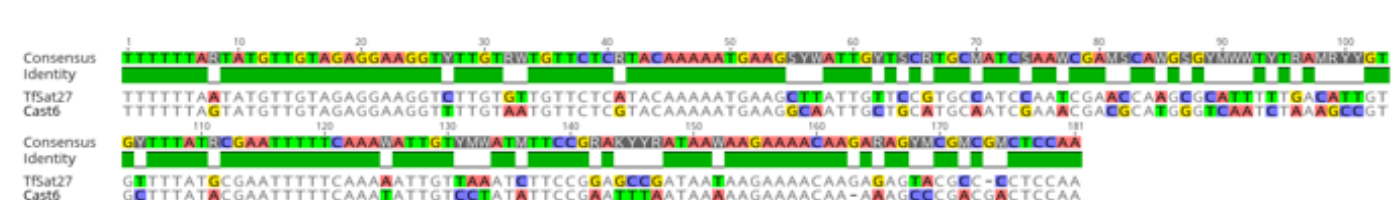
6) TfSat22 – Cast9 (pairwise identity: 81.7%)



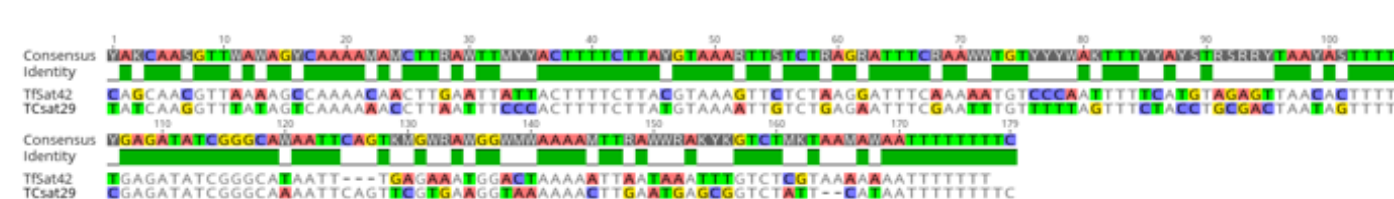
7) TfSat25 – Tcsat12 (pairwise identity 94.8%)



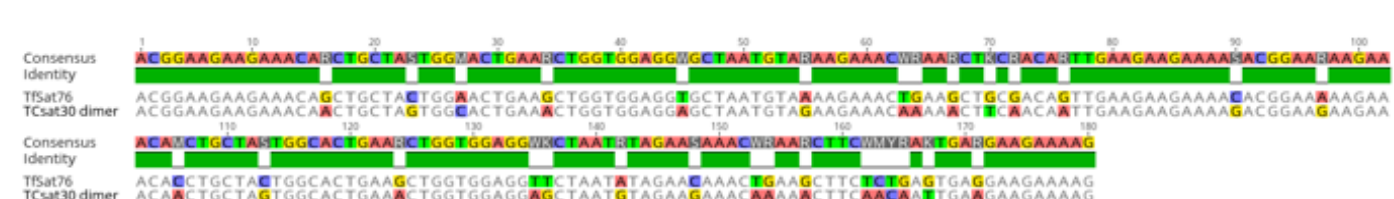
8) TfSat27 – Cast6 (73.5%)



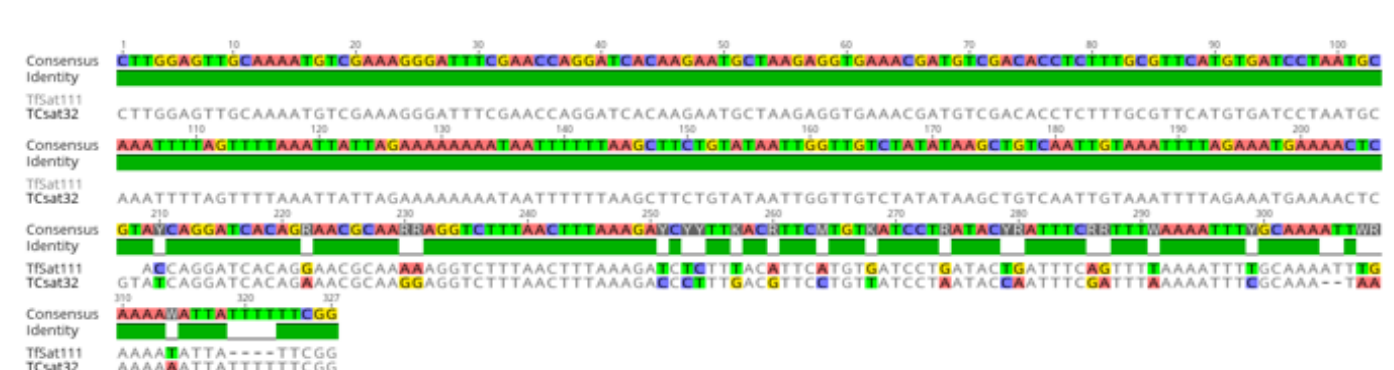
9) TfSat42 – Tcsat29 (63.8%)



10) TfSat76 – Tcsat30 dimer (pairwise identity 83.3%)



11) TfSat111- Tcsat32 (pairwise identity 77.3%)



Supplemental Figure S13. Alignments of the *T. freemani* satDNAs (*TfSat*) and their orthologs among the known *T. castaneum* satDNAs (*Tc* and *TCsat*). Pairwise identities between the consensus sequences are indicated in the parentheses.