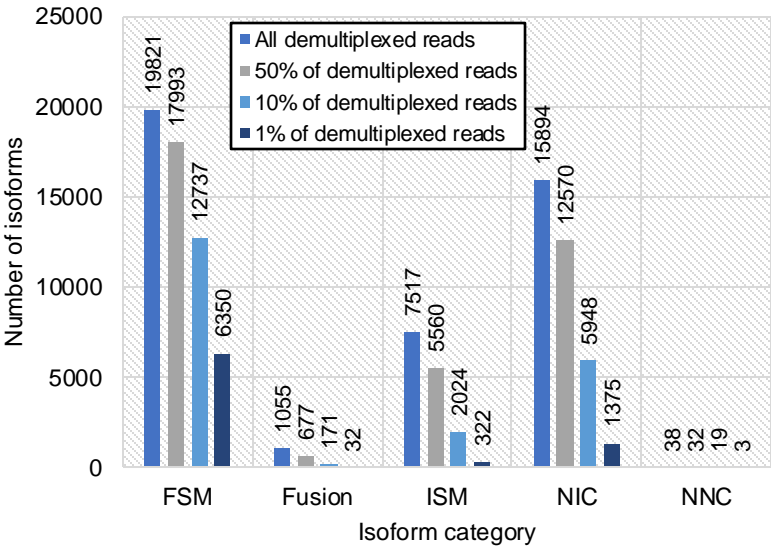
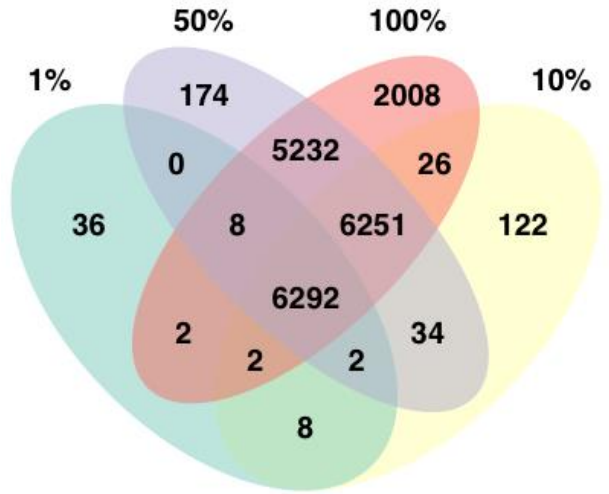


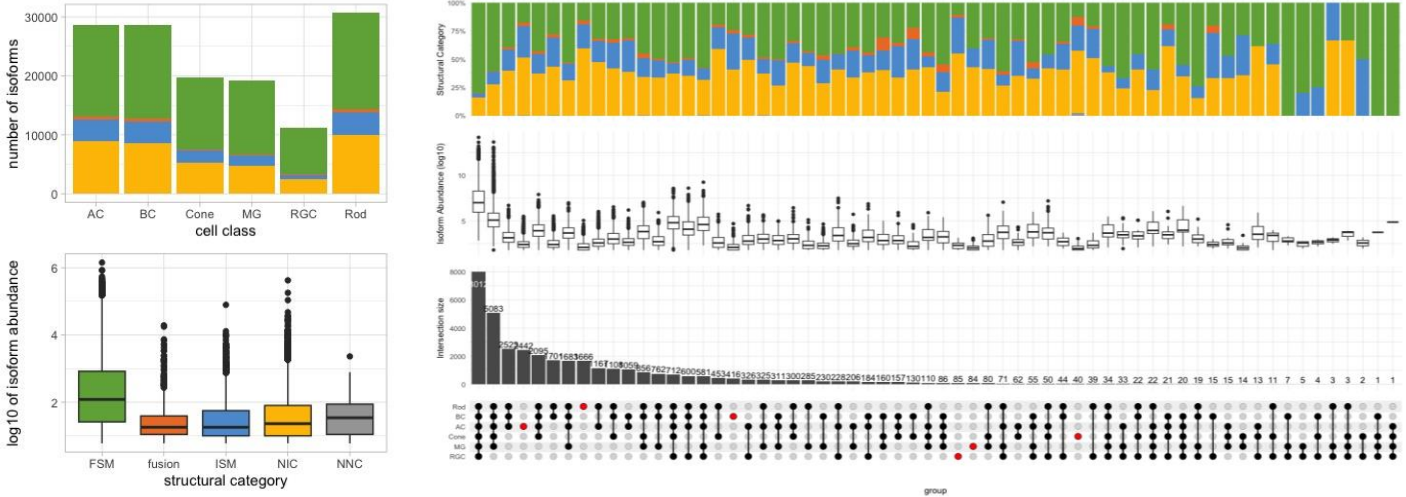
A



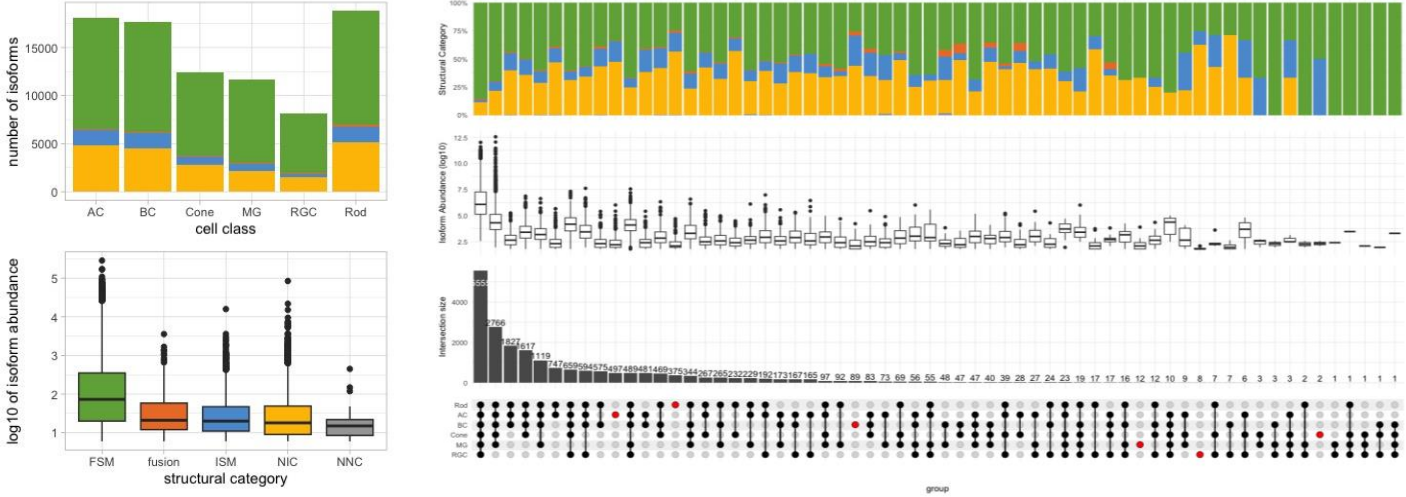
B



C Using 50% of demultiplexed LR



D Using 10% of demultiplexed LR



E Using 1% of demultiplexed LR

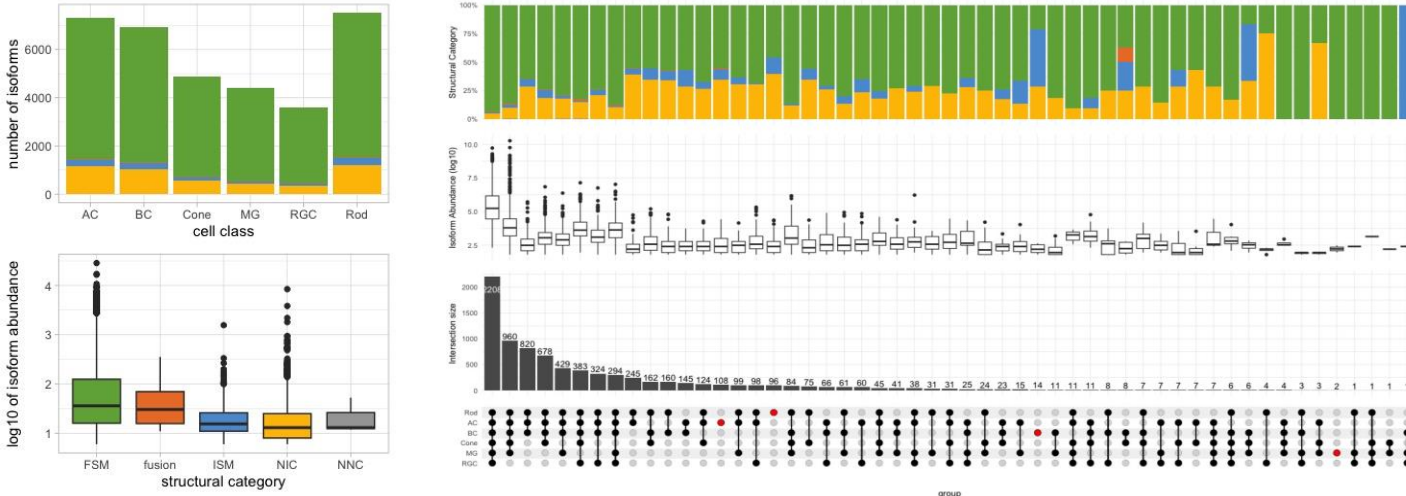


Figure. S5 Down sampling analysis

A. Classification of isoforms according to their splice sites when compared to reference annotations and number of isoforms in each category detected by the 100%, 50%, 10% and 1% of demultiplexed LR_s.

B. Venn diagram showing intersection of the FSM_s detected using all, 50%, 10% and 1% of demultiplexed LR_s. The counts were based on analysis result using software gffcompare.

C. Number of isoforms in different categories for each cell class, isoform abundance in different categories and overlap of isoforms in cell classes for the isoform set detected using 50% of demultiplexed LR_s.

D. Number of isoforms in different categories for each cell class, isoform abundance in different categories and overlap of isoforms in cell classes for the isoform set detected using 10% of demultiplexed LR_s.

E. Number of isoforms in different categories for each cell class, isoform abundance in different categories and overlap of isoforms in cell classes for the isoform set detected using 1% of demultiplexed LR_s.