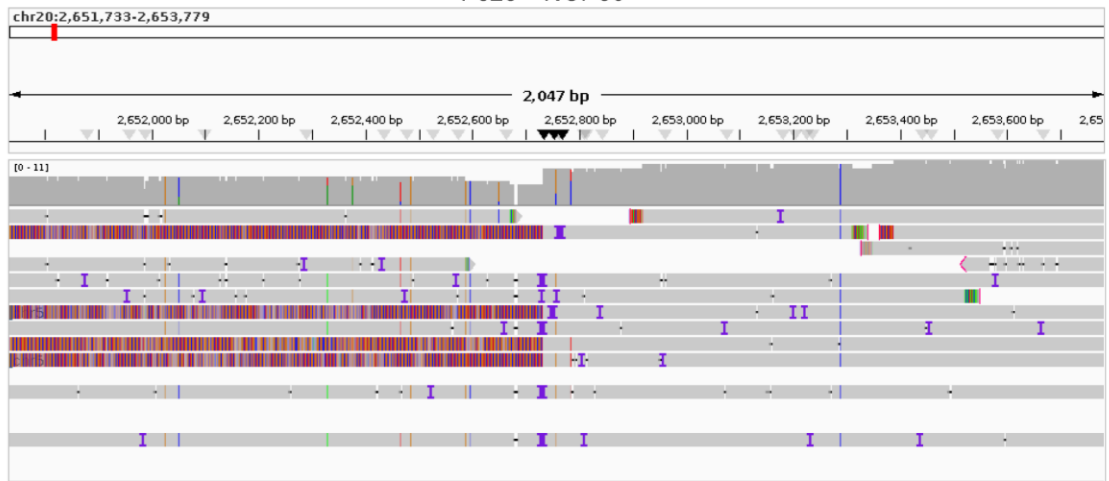
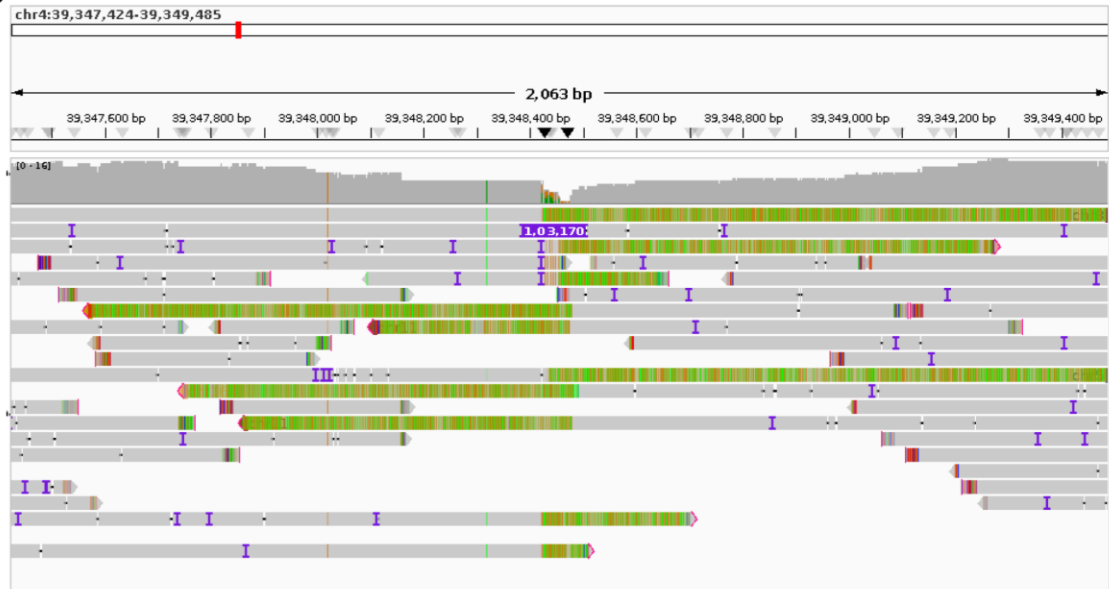


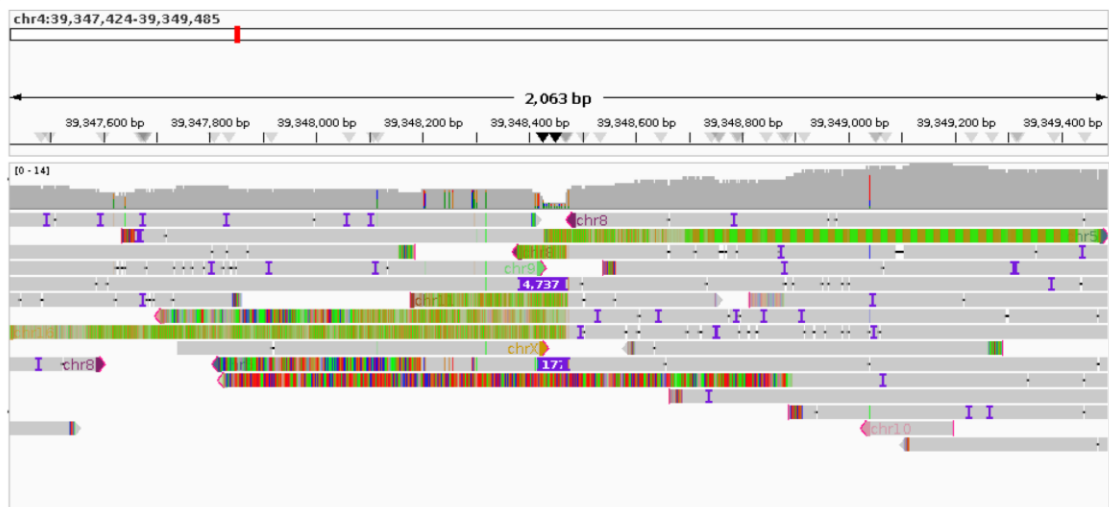
A

P023 – *NOP56*

B

P069 – *RFC1*

C

P097 – *RFC1*

Supplemental Fig. S4. IGV screenshots of repeat expansions identified in short-read genome sequencing (SR-GS) and not called by Straglr in long-read adaptive sequencing (LR-AS).

The repeat expansion not called by Straglr for *NOP56* (A) and *RFC1* (B-C) can be identified by manual review of the LR-AS data in IGV, with indicative soft-clipped reads that are suggestive of large expansions.