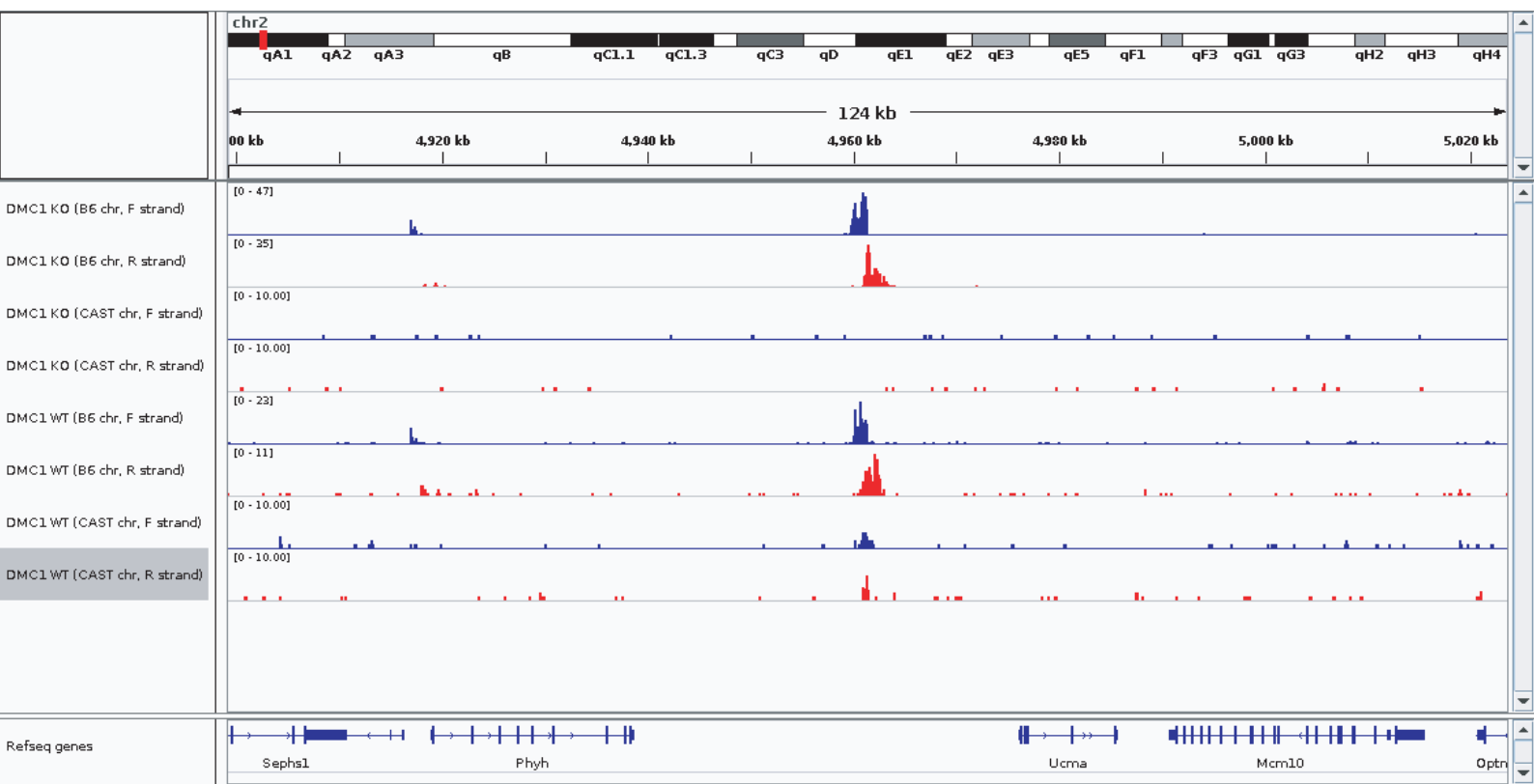
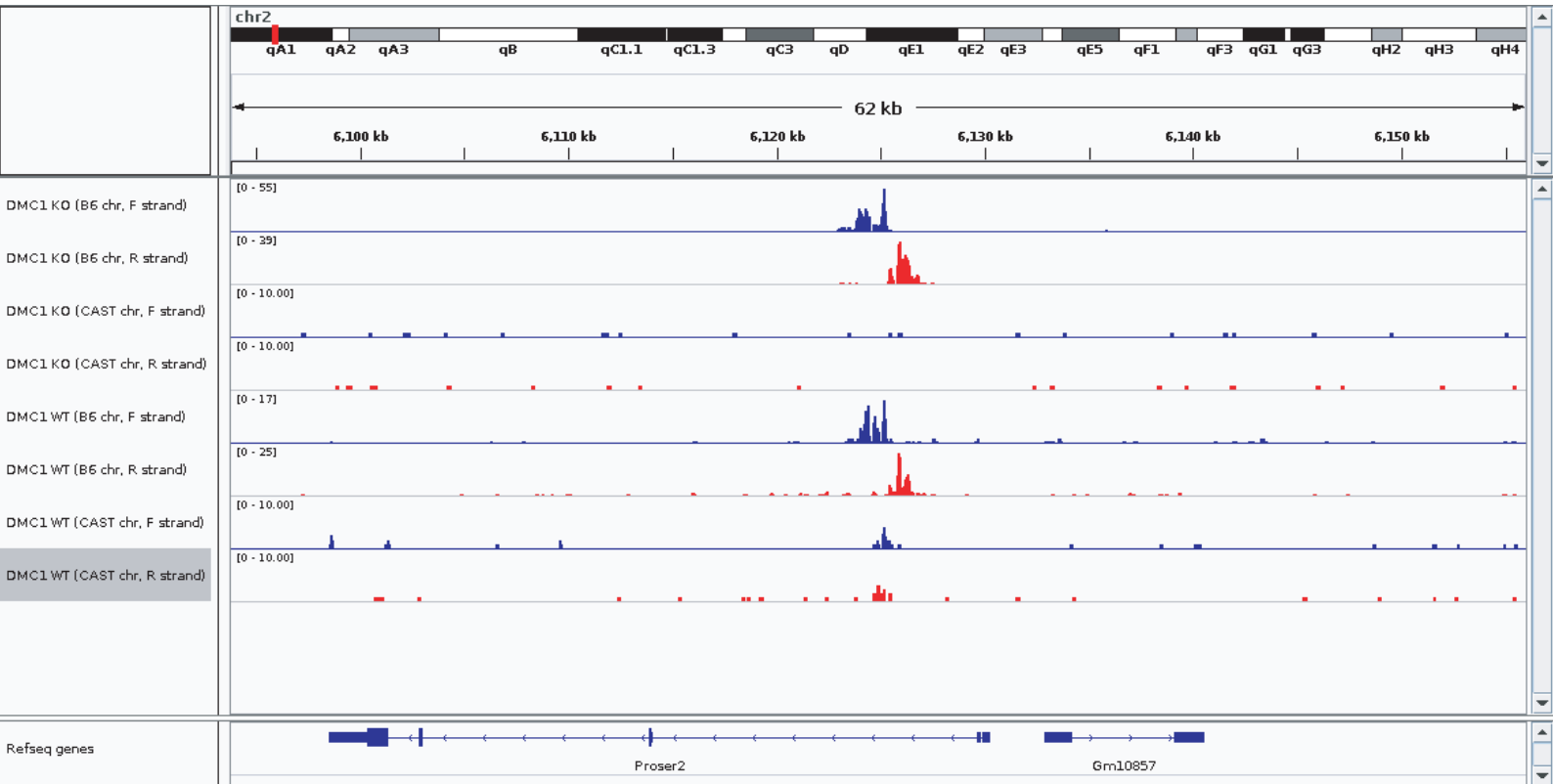


A



B



Supplementary Figure S4. Integrative Genomics Viewer (IGV) plots illustrating RPA ChIP-seq read-depth in two hotspots (A, B). The top four tracks show depth of forward and reverse strand reads mapping to the B6 chromosome and CAST chromosomes respectively in *Dmc1*^{-/-} (KO) mice. The bottom four tracks show the corresponding values assayed in *Dmc1*^{+/+} (WT) mice. Both hotspots are activated by the PRDM9 CAST allele, which binds the B6 chromosome more strongly in these hotspots. Note that the B6 chromosome has RPA signal in both *Dmc1*^{-/-} and *Dmc1*^{+/+} mice, while the CAST chromosome has signal only in *Dmc1*^{+/+} mice.