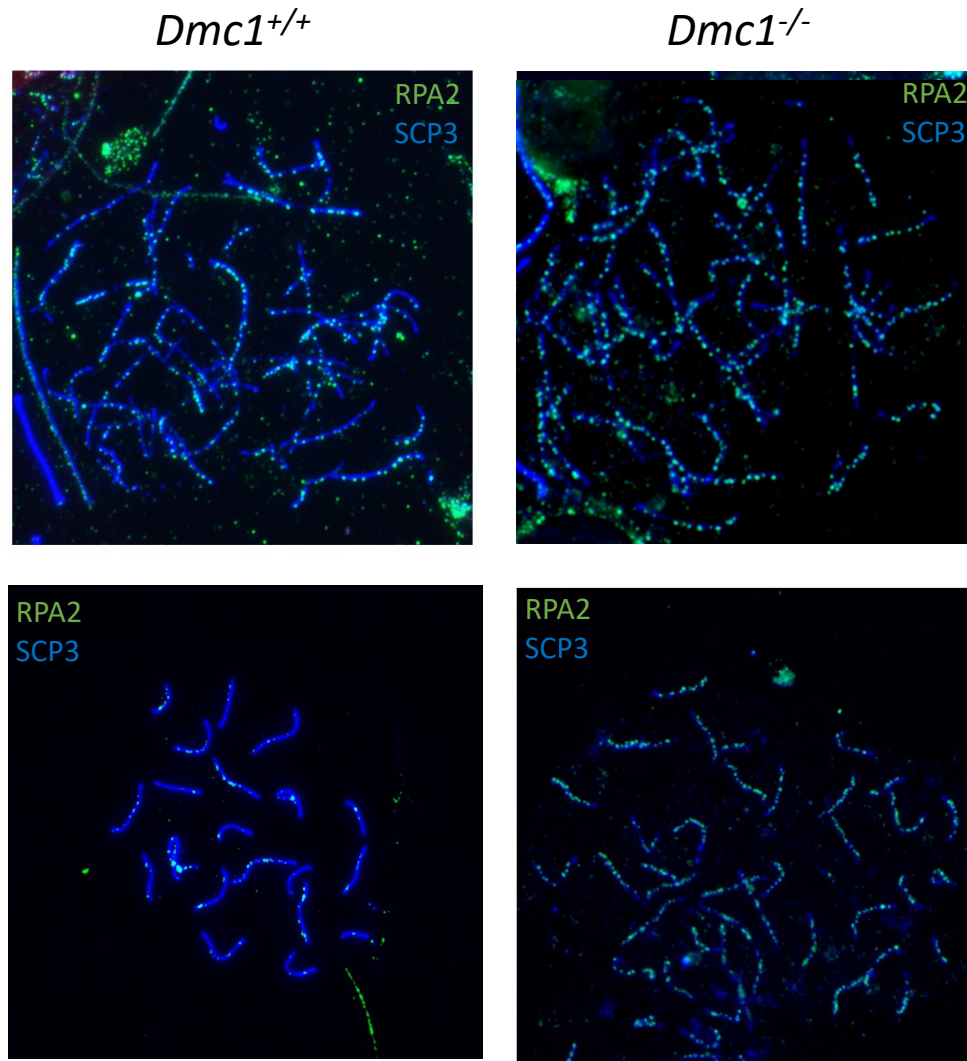
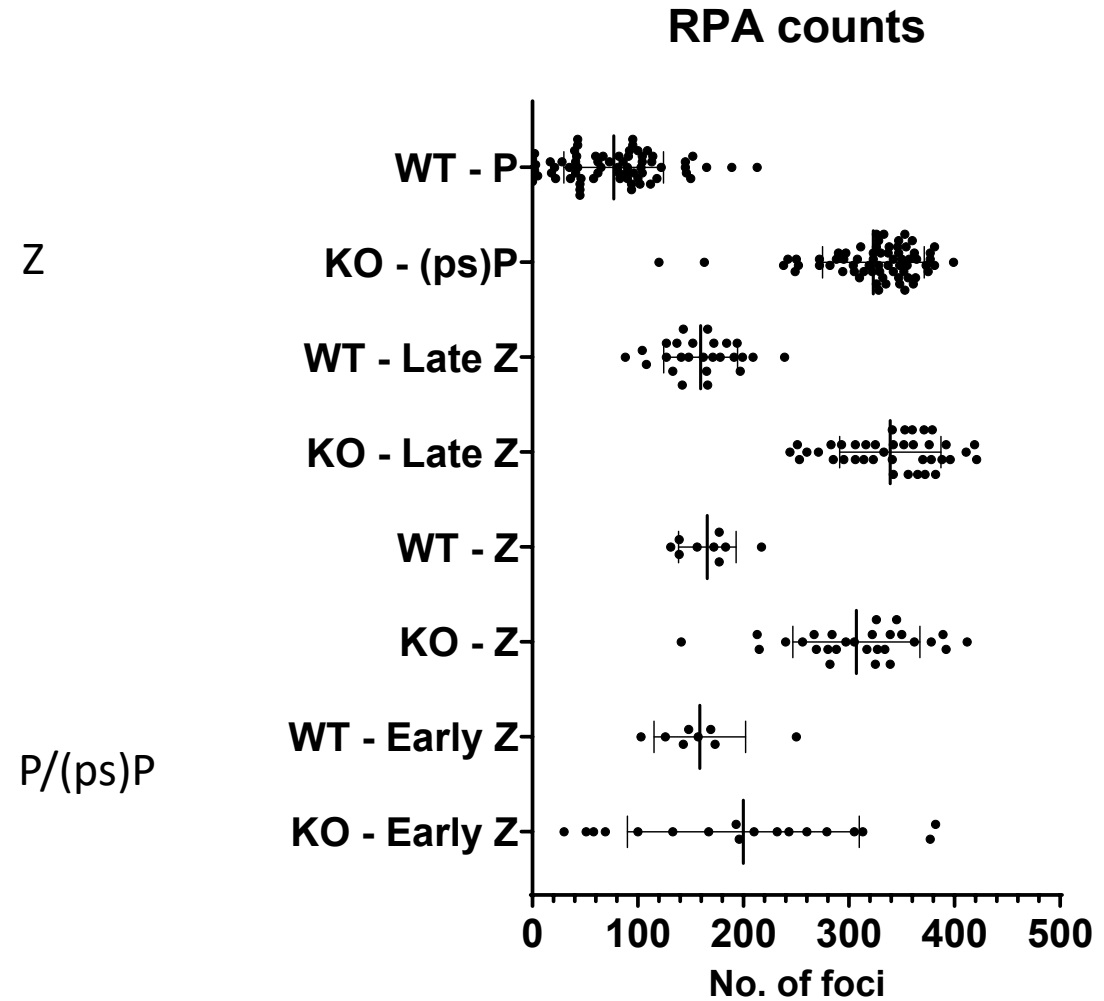


**A****B**

**Supplementary Figure S2.** RPA2 localization and foci counts in *Dmc1* Knockout hybrid founders. (A) Representative immunofluorescence staining of RPA2 (green) in testis nuclear spreads from founder mice, one with DMC1 present (*Dmc1*<sup>+/+</sup>) and ablated (*Dmc1*<sup>-/-</sup>) with co-staining of the synaptonemal complex protein SYCP3 which labels the chromosome axis (blue) in zygotene (Z) (top panels) and pachytene(P)/pseudopachytene ((ps)P) (middle panels). (B) RPA2 foci counts in *Dmc1*<sup>+/+</sup> (WT) and *Dmc1*<sup>-/-</sup> (KO) zygotene (early, mid and late) and pachyethene/psuedopachytene.