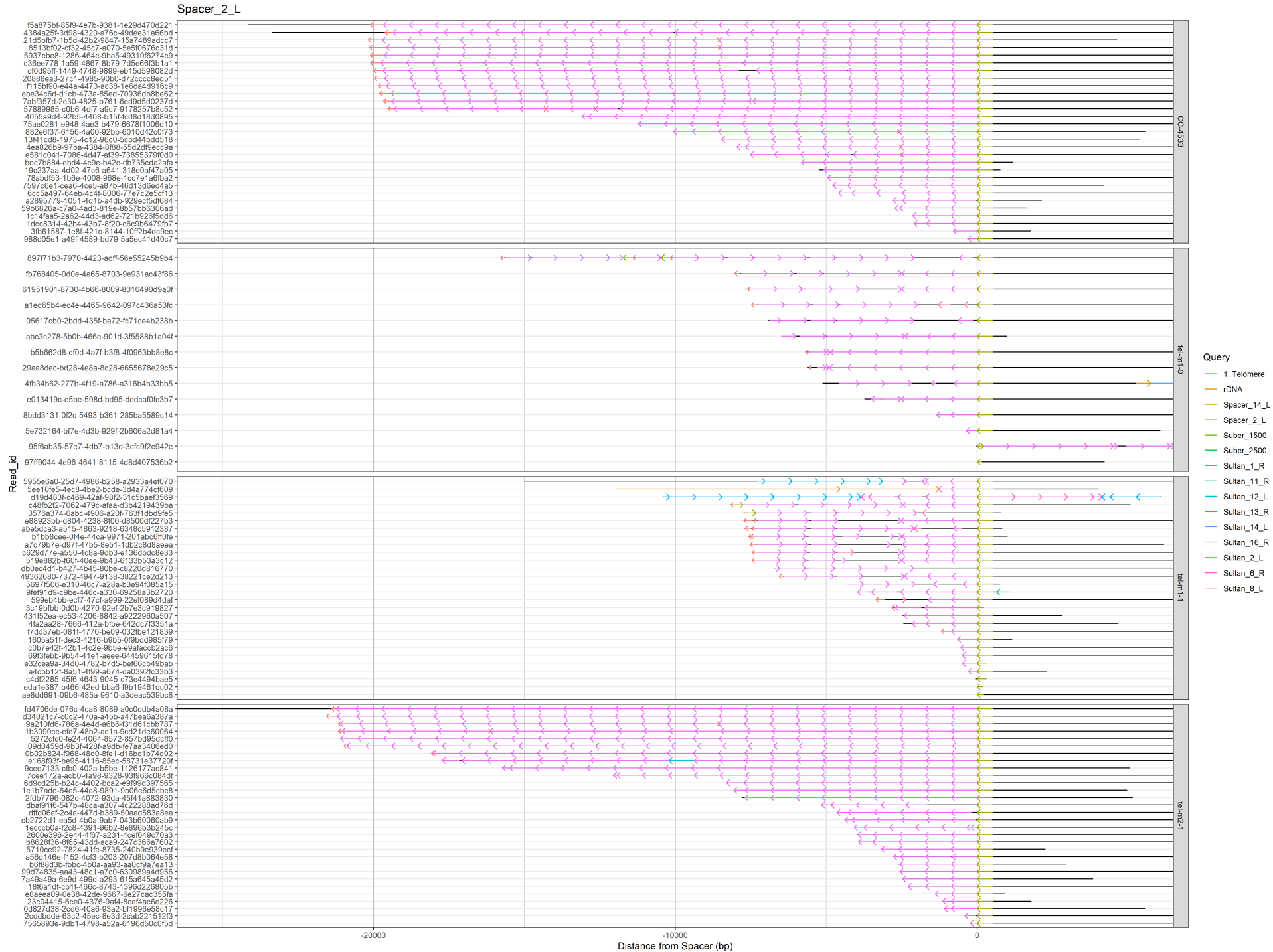
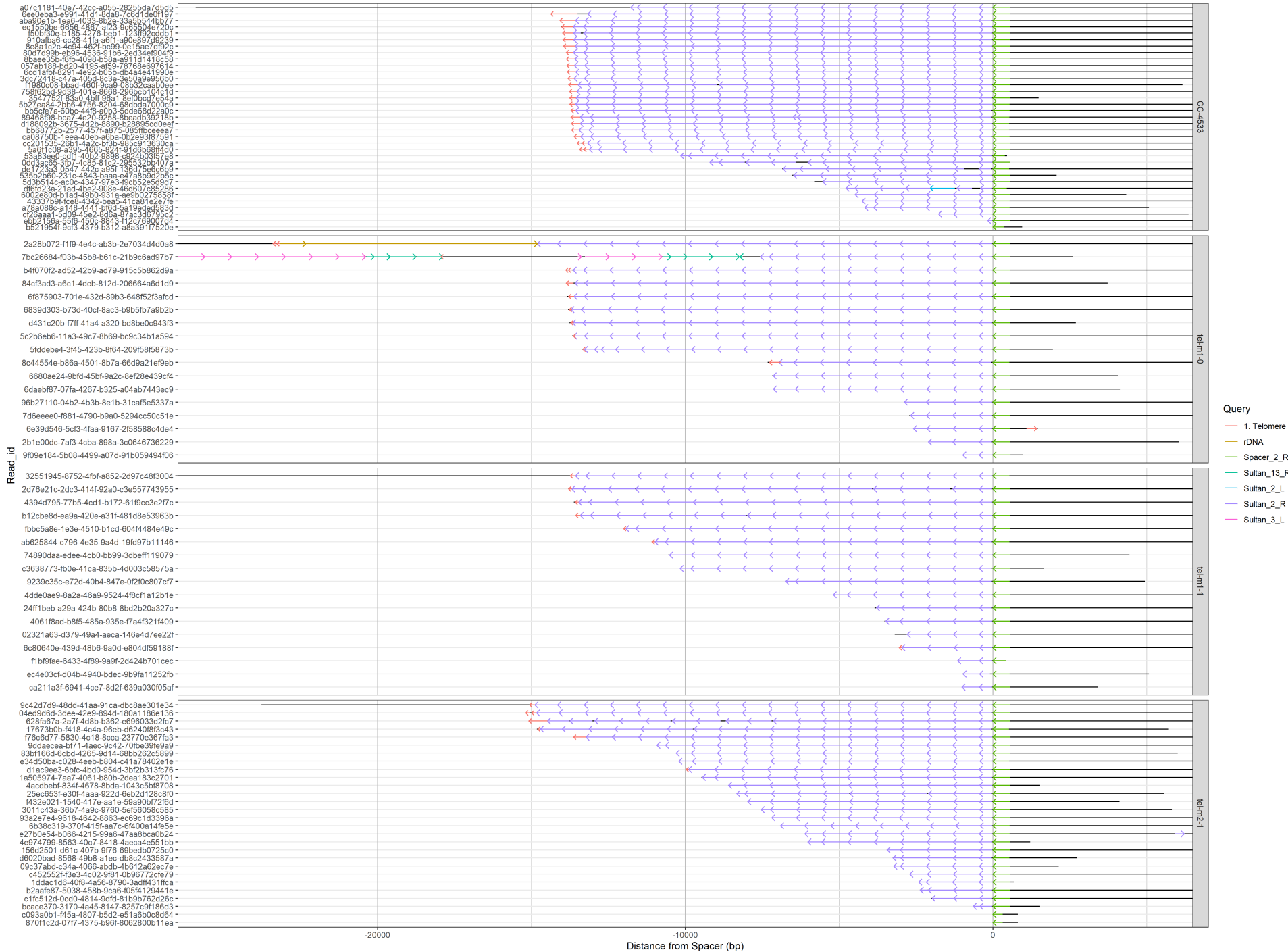
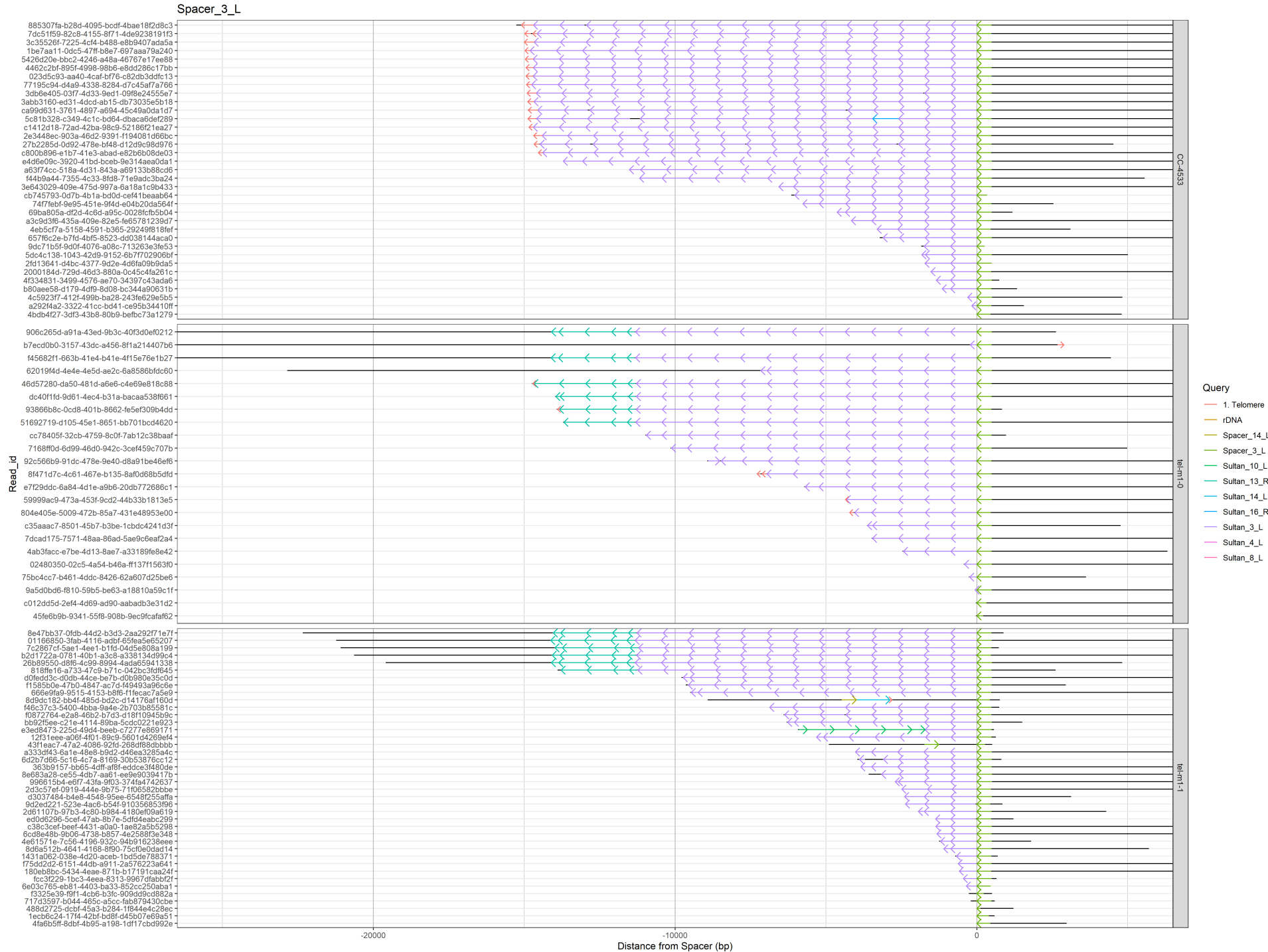


Supplemental Dataset 1. *Spacer*-based analysis of subtelomeres. All *Spacer*-containing reads anchored at the *Spacer* element are depicted for each subtelomere for CC-4533, *tel-m1-0*, *tel-m1-1* and *tel-m2-1*. The queried elements are displayed in color. The identifier for each read (“Read_id”) is also shown, to facilitate retrieval from the sequencing data.

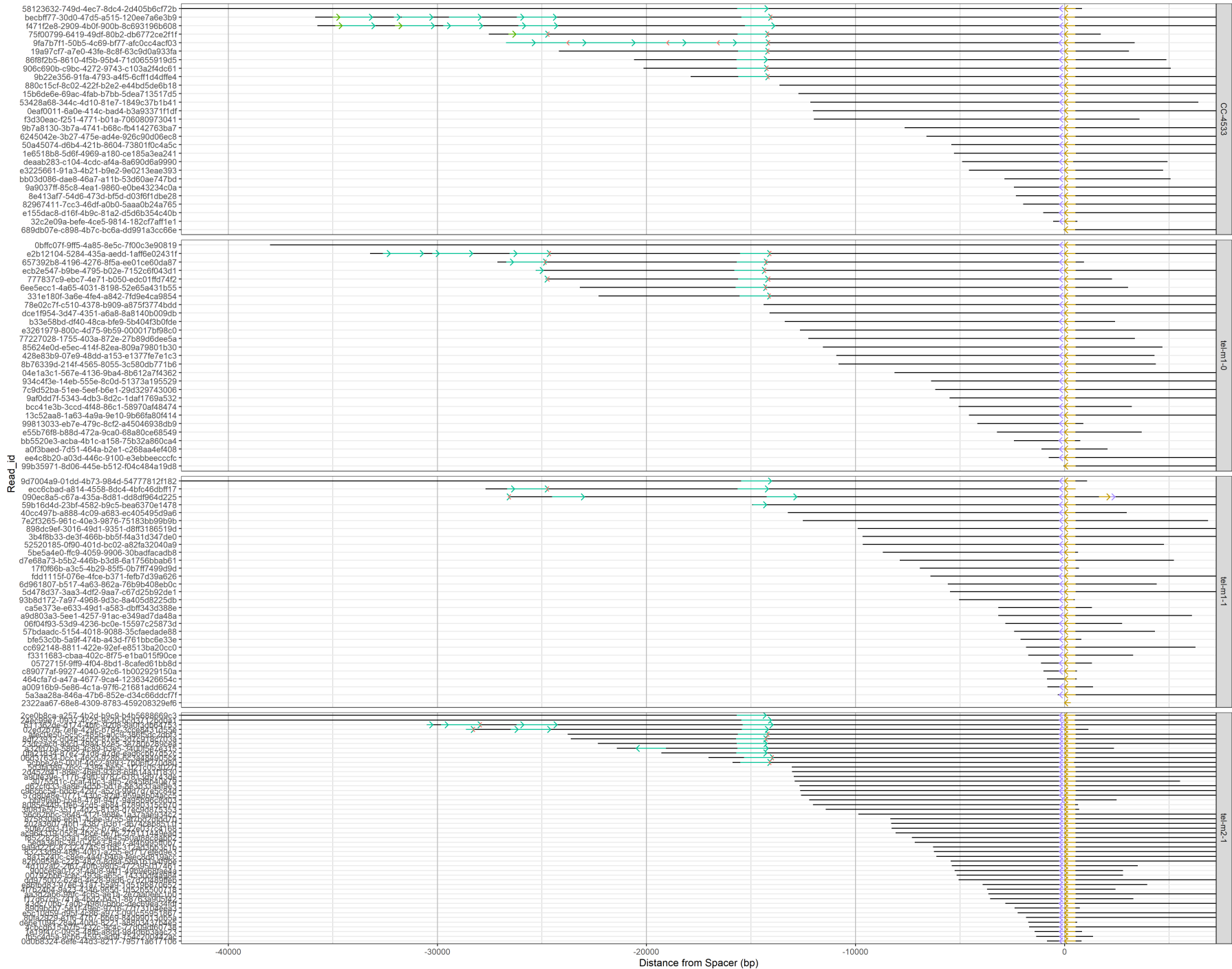


Spacer_2_R



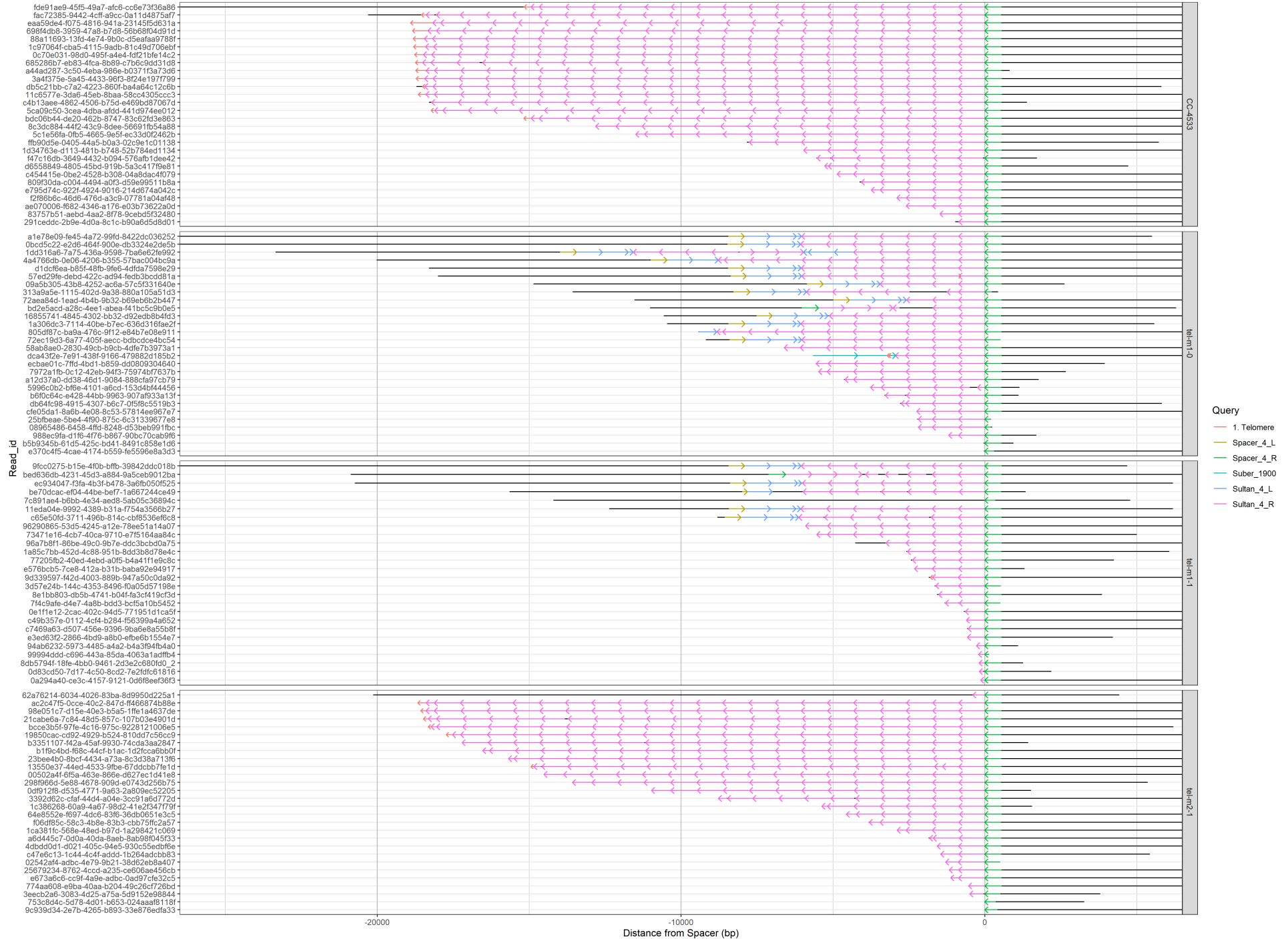


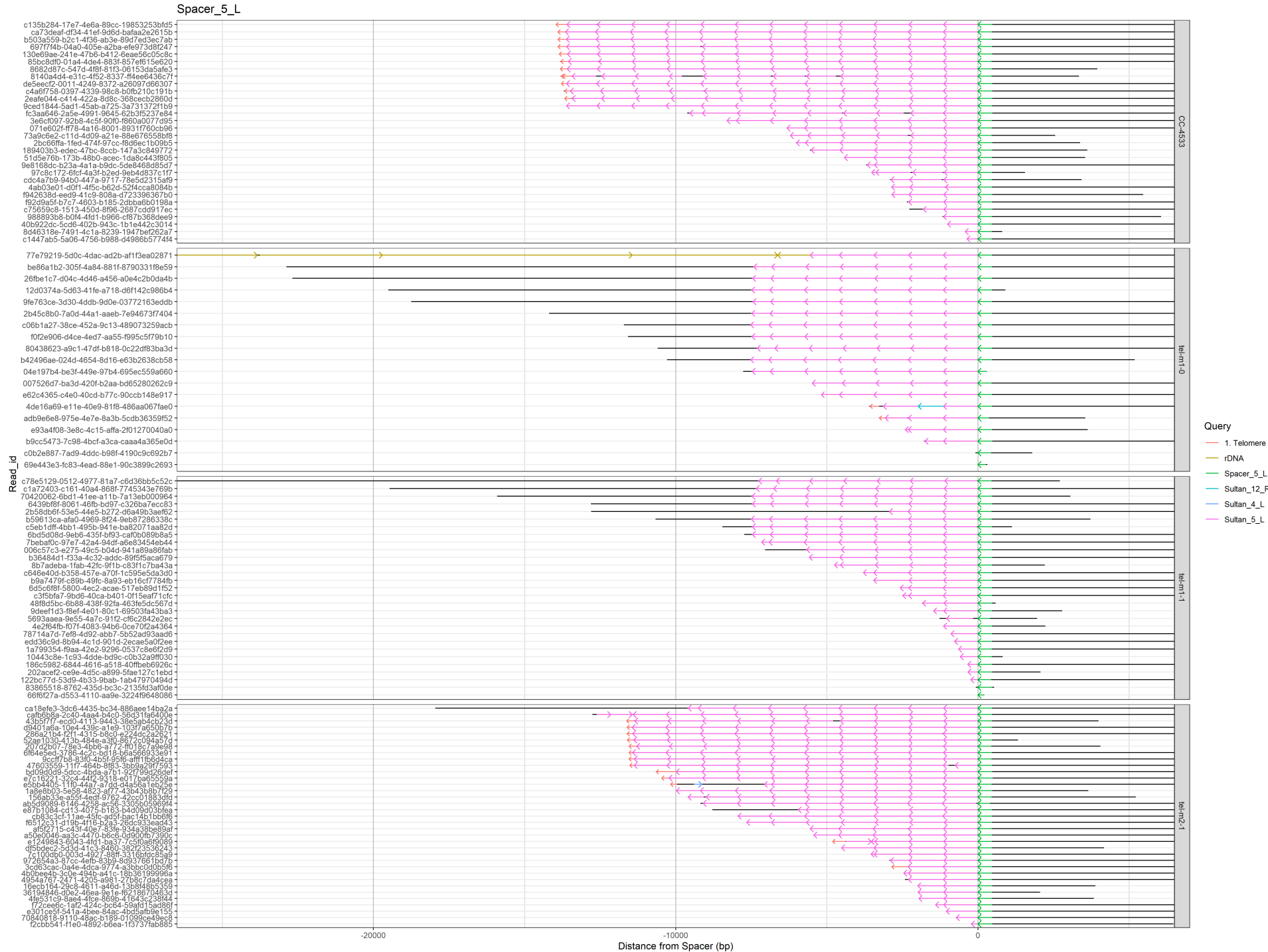
Spacer_3_R



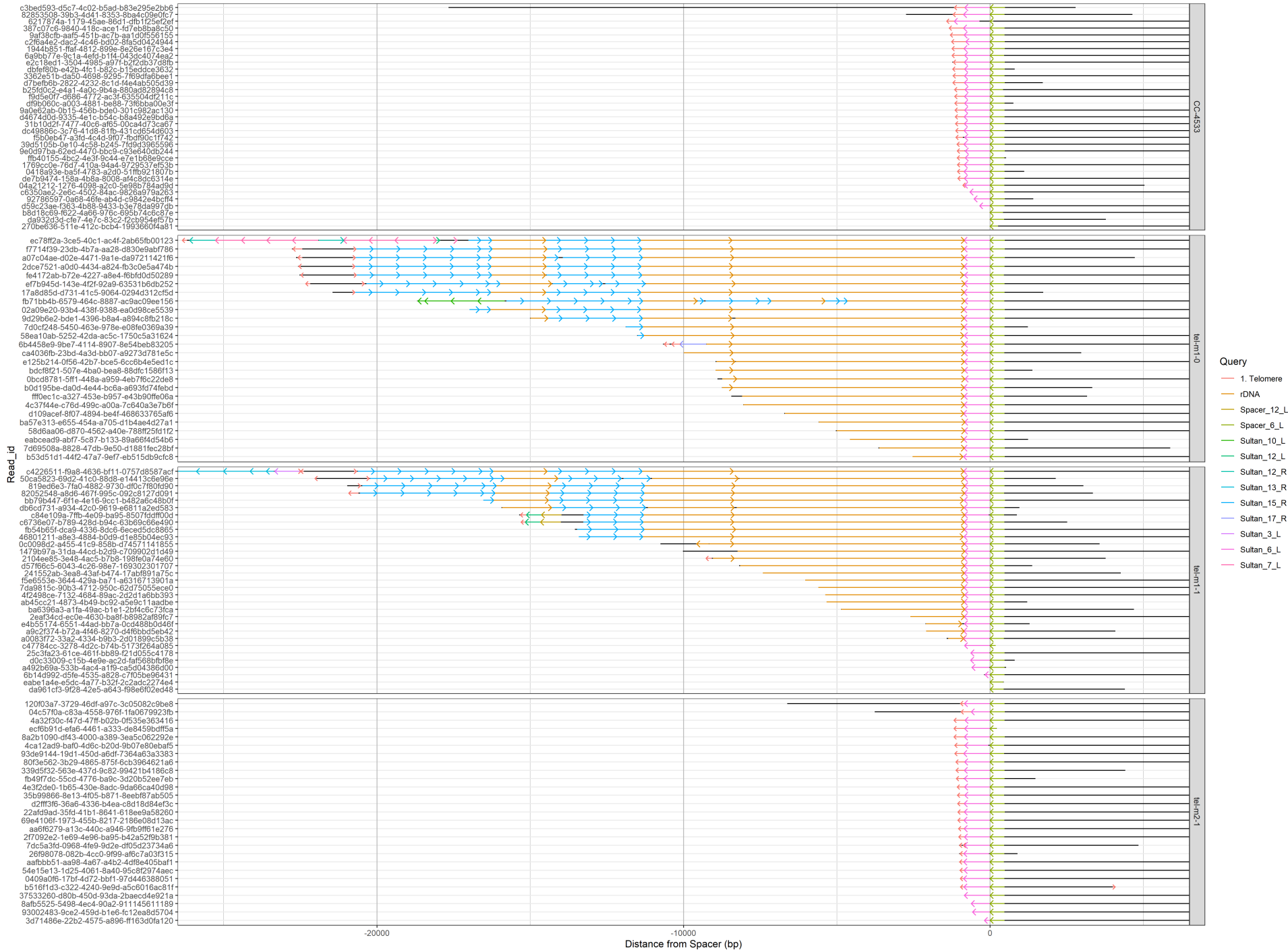


Spacer_4_R

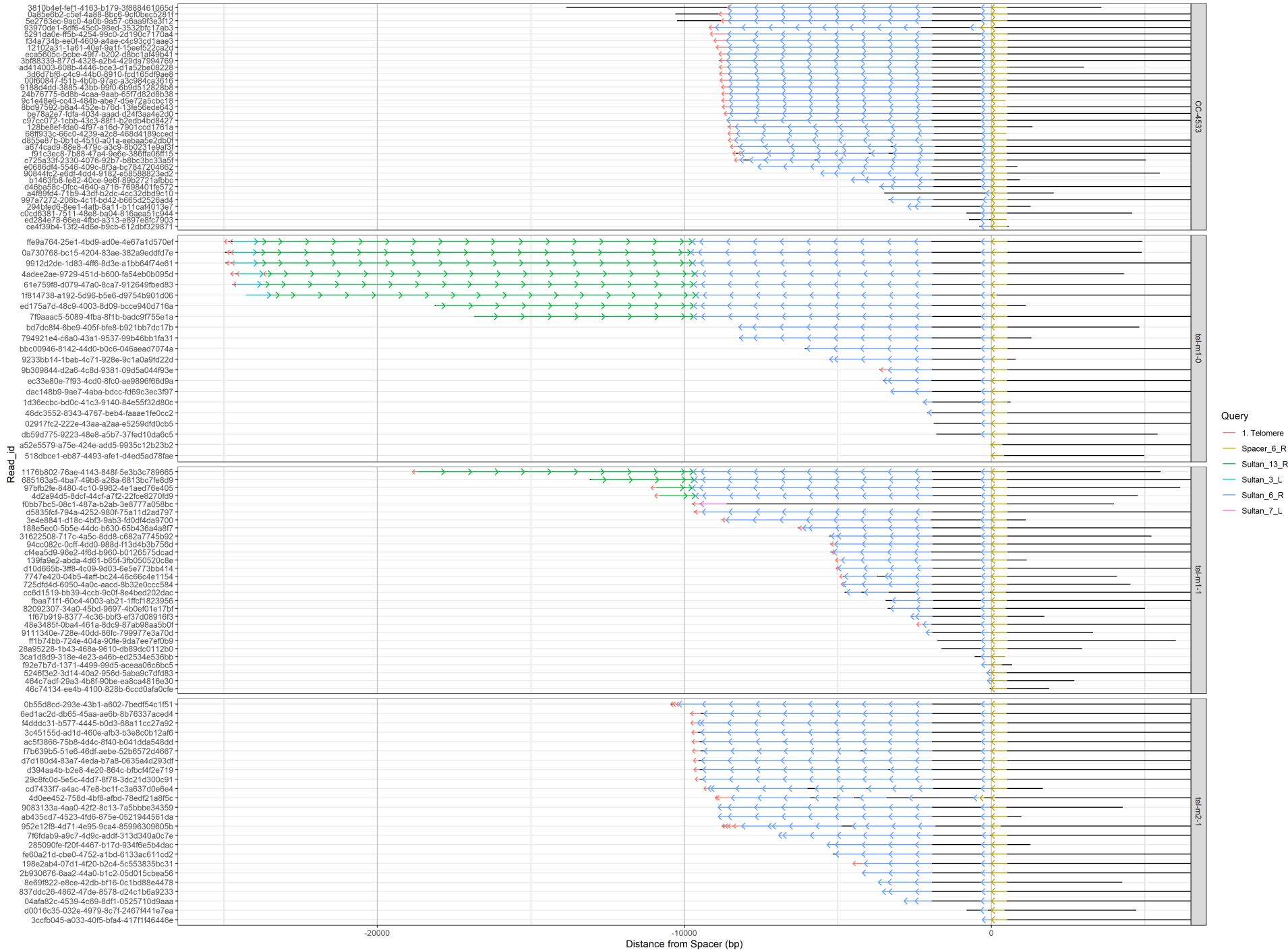


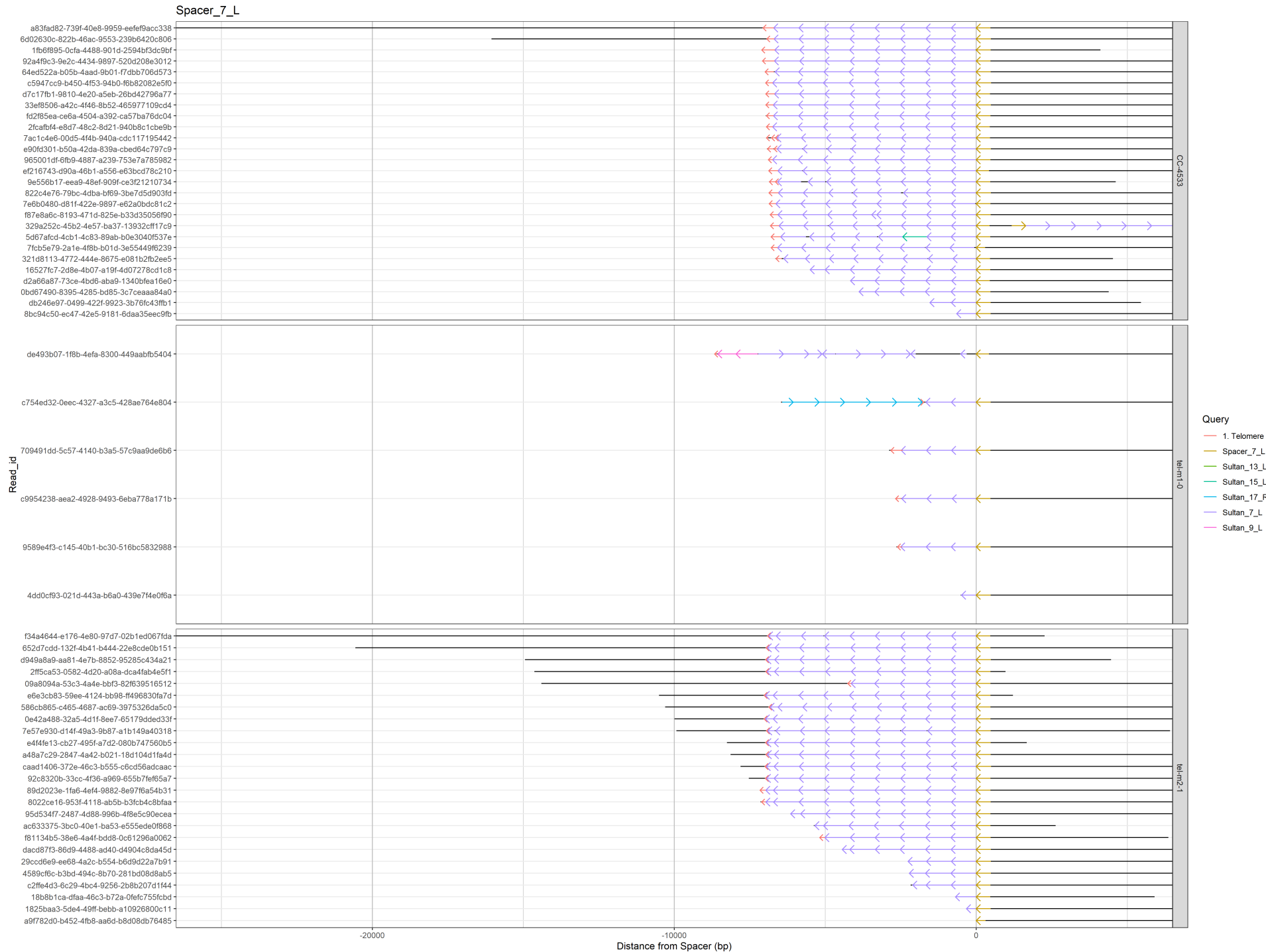


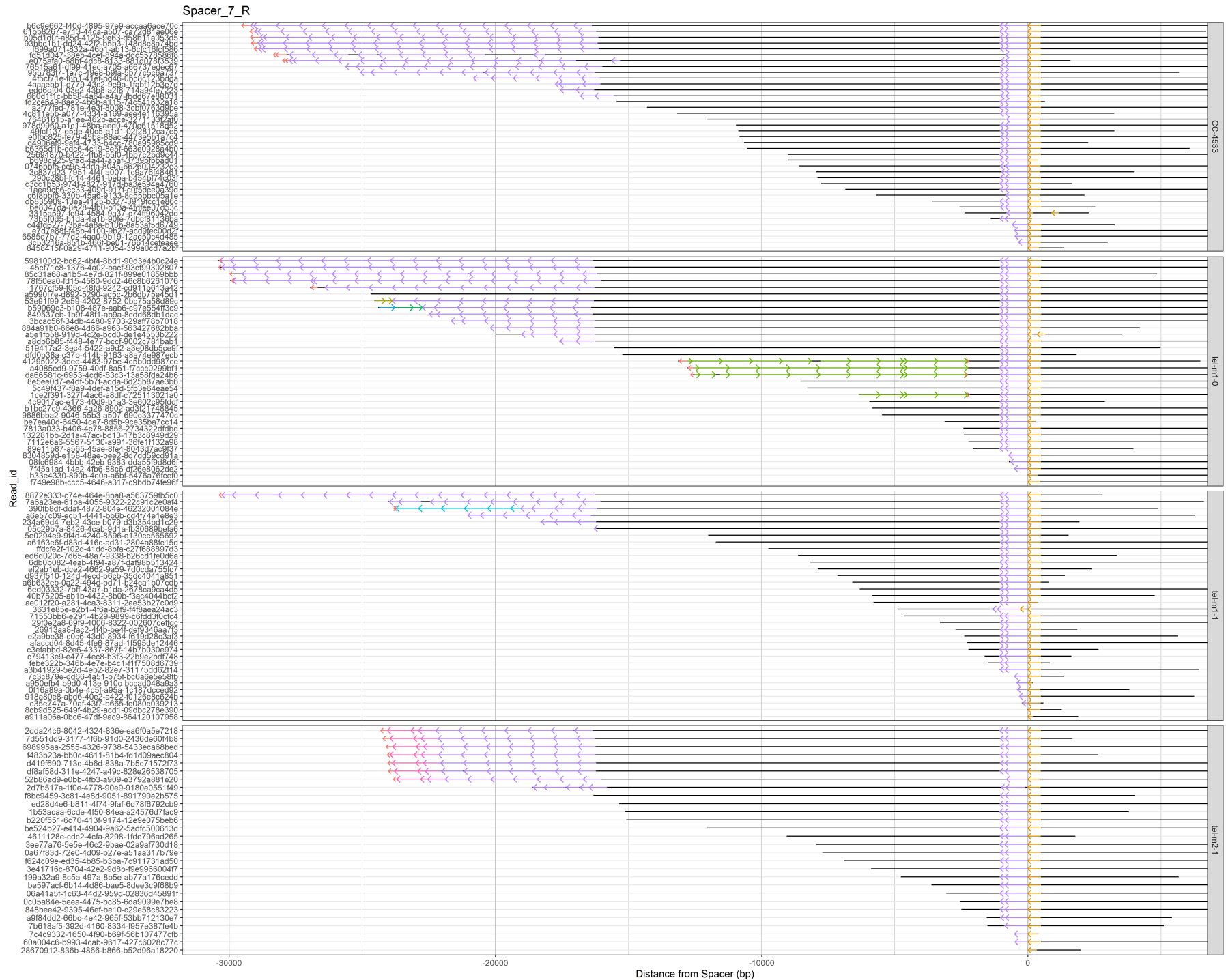
Spacer_6_L

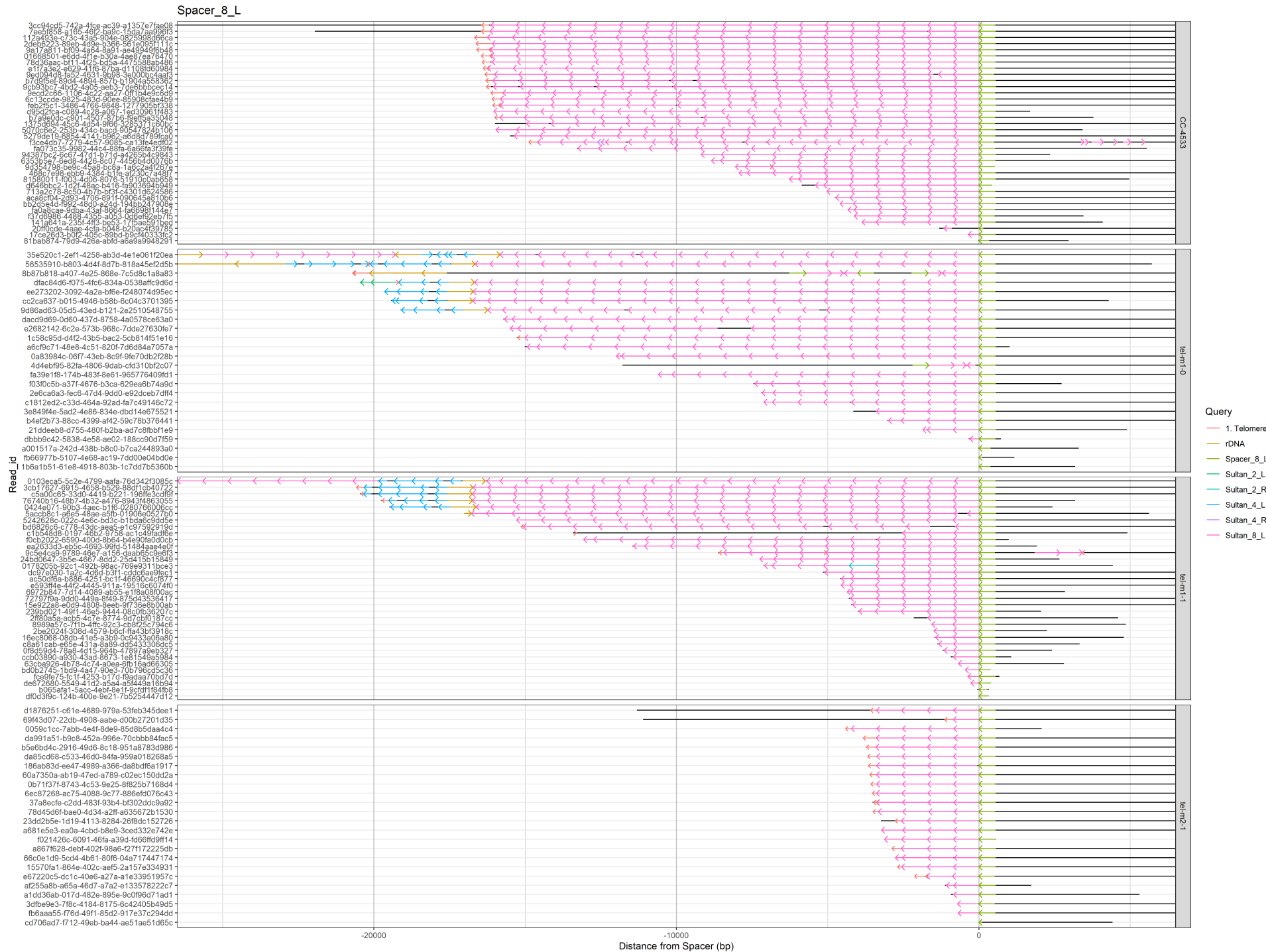


Spacer_6_R



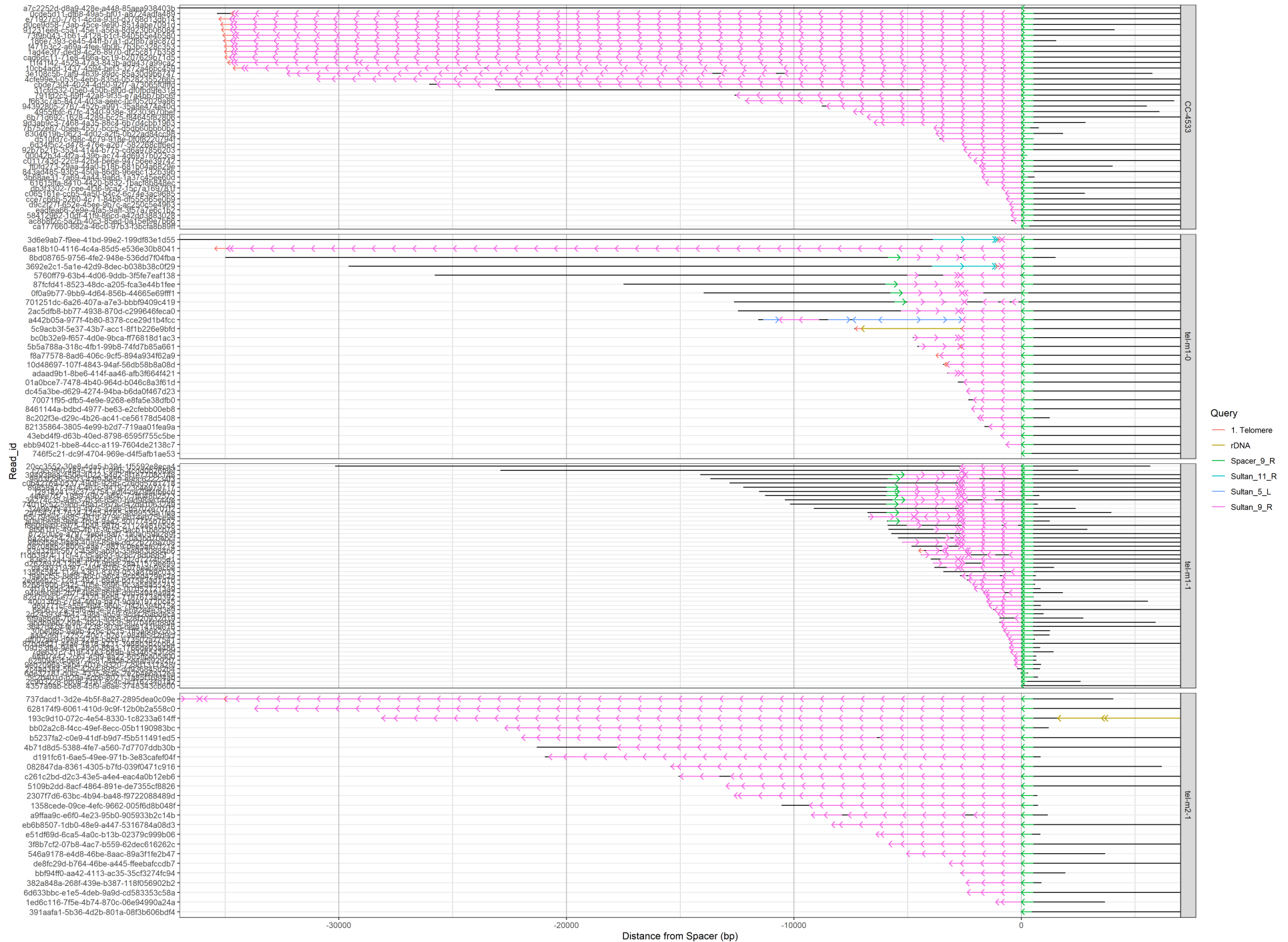


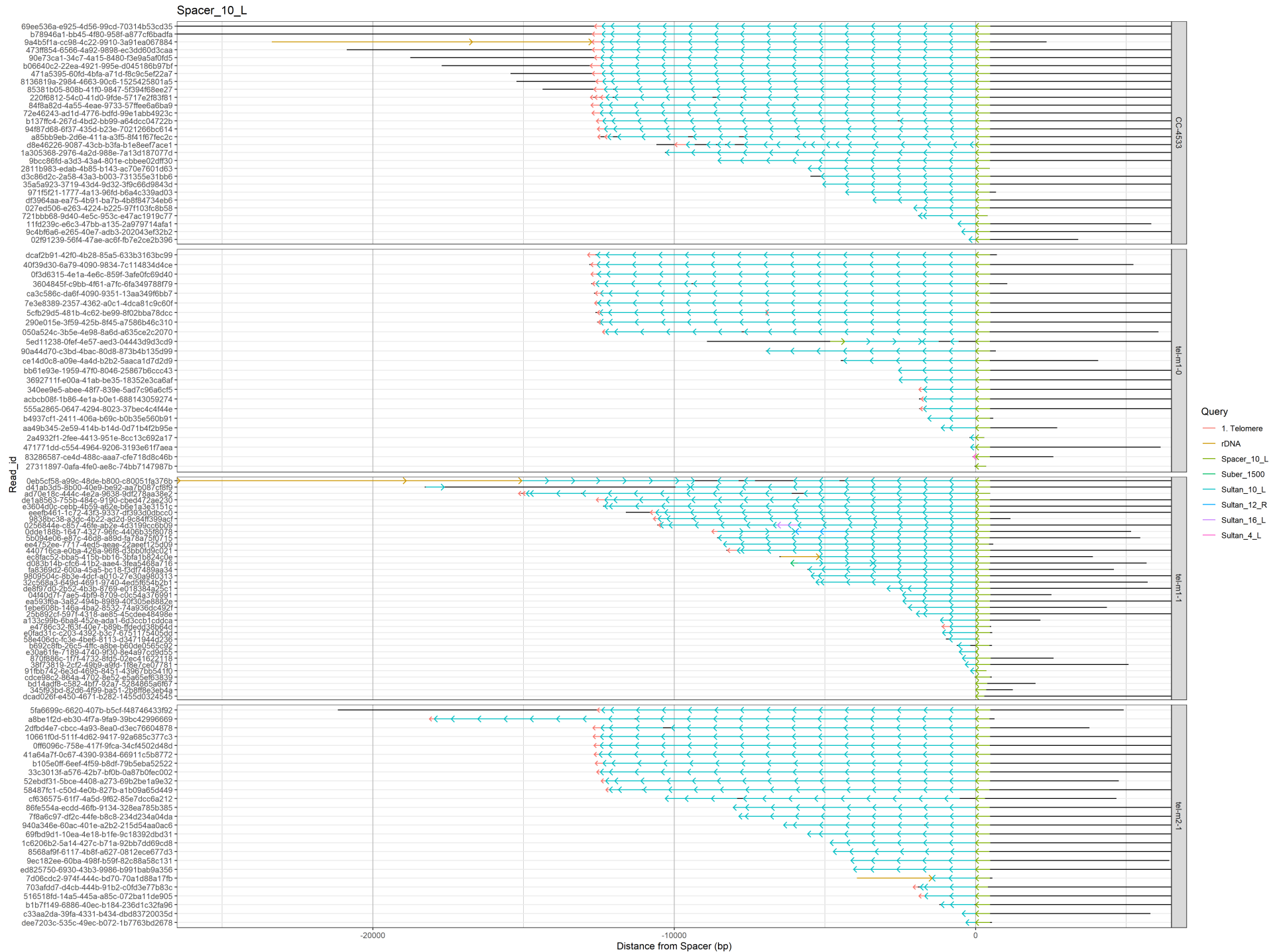


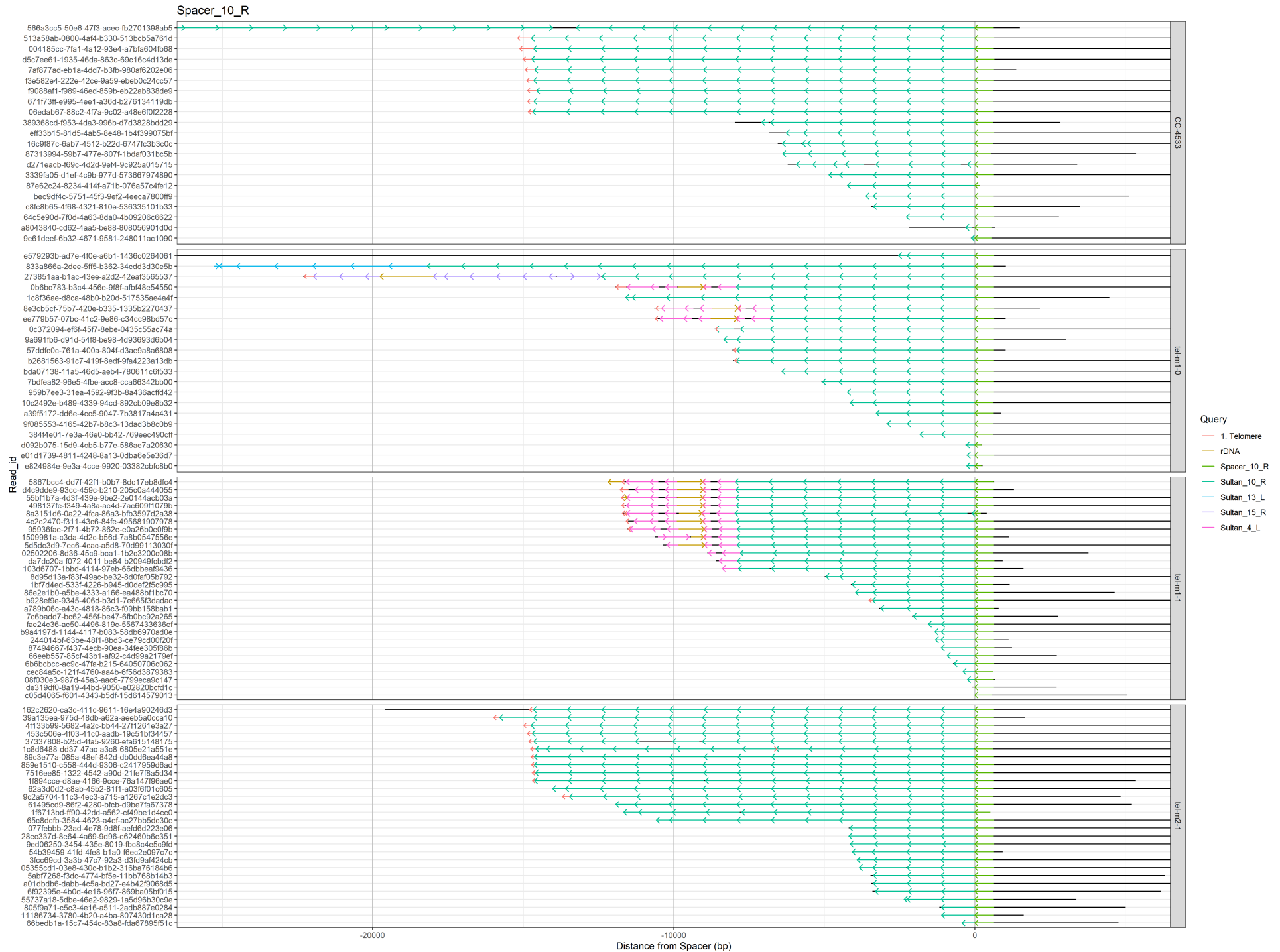


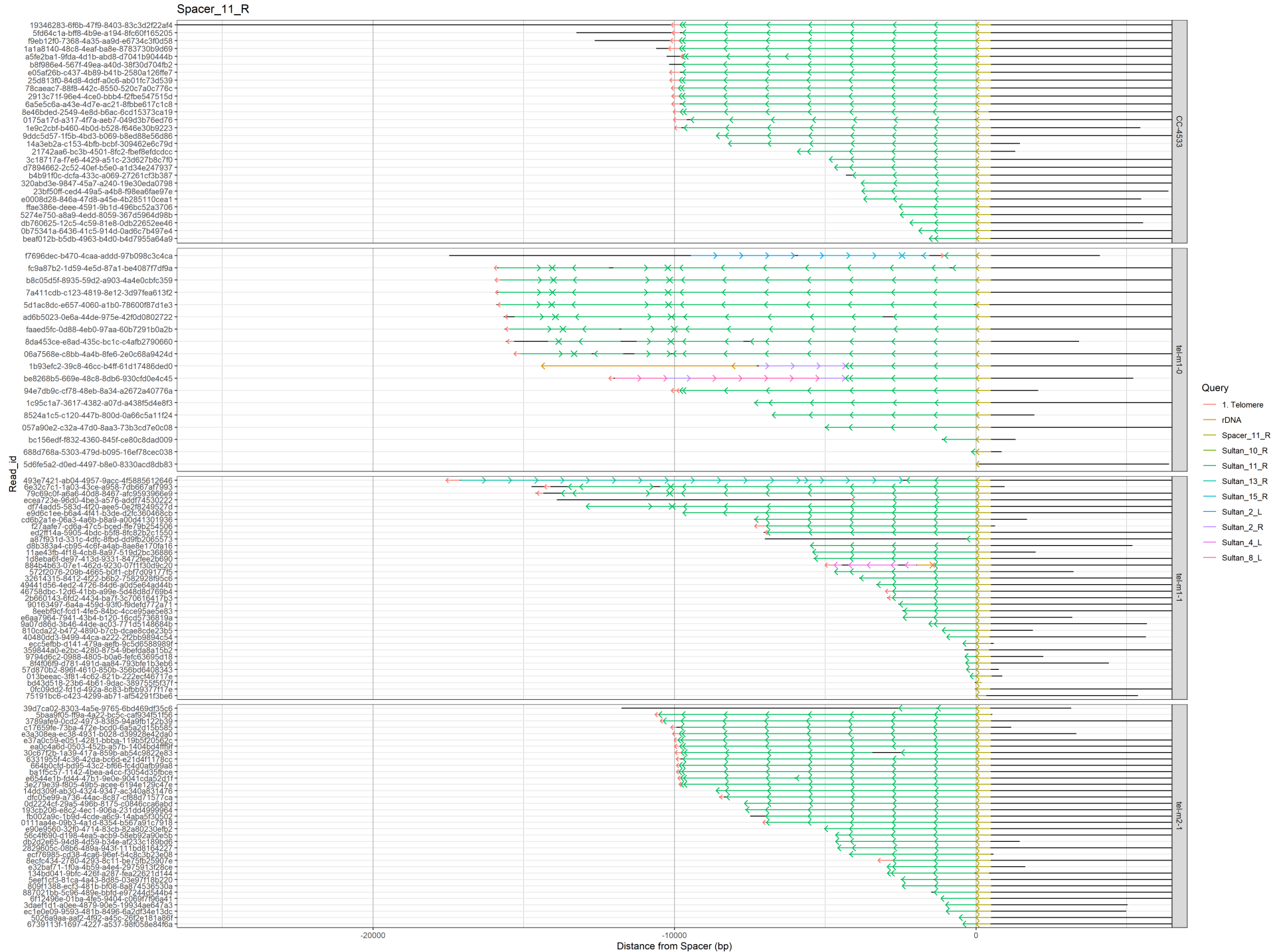


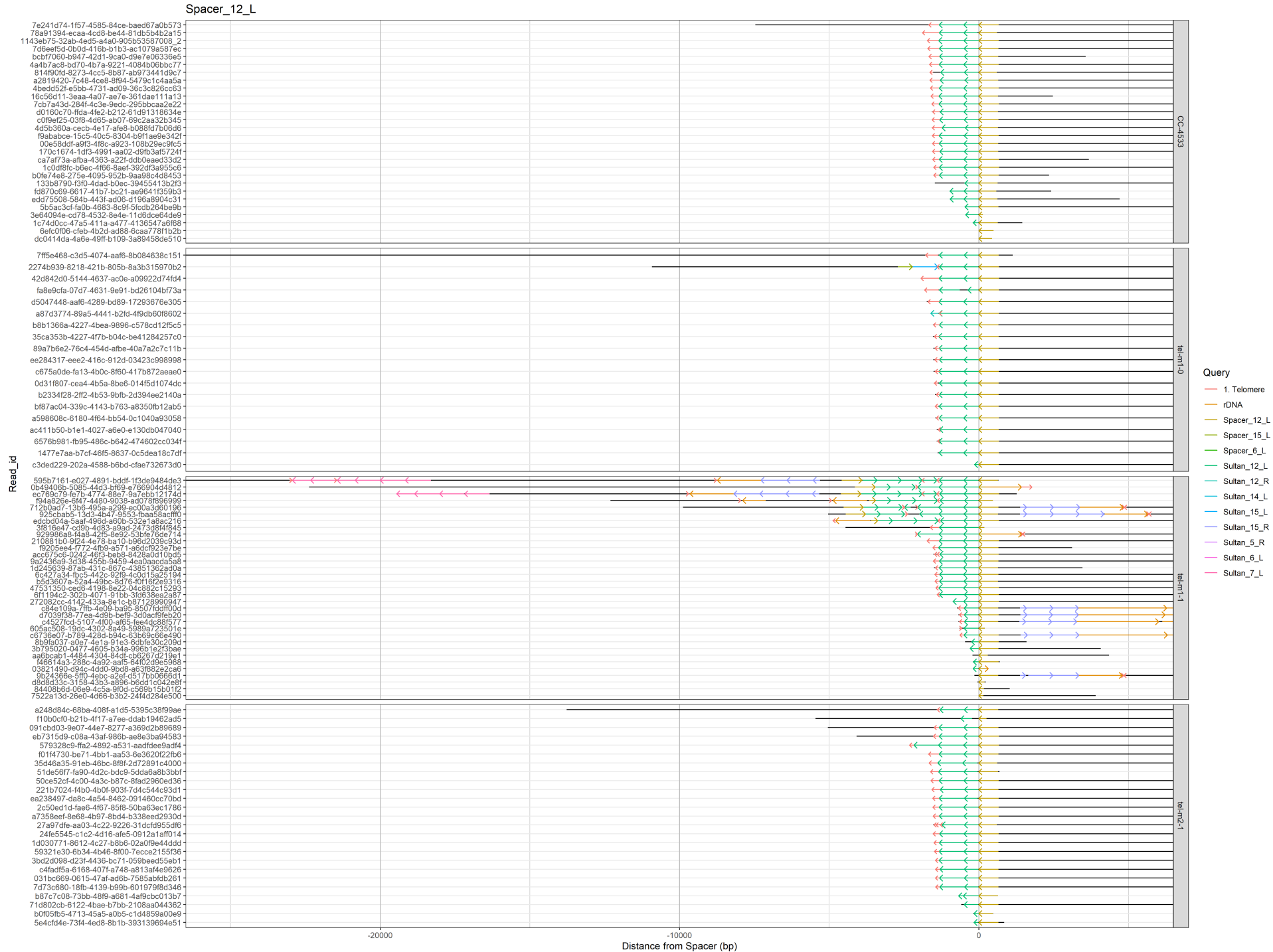
Spacer_9_R

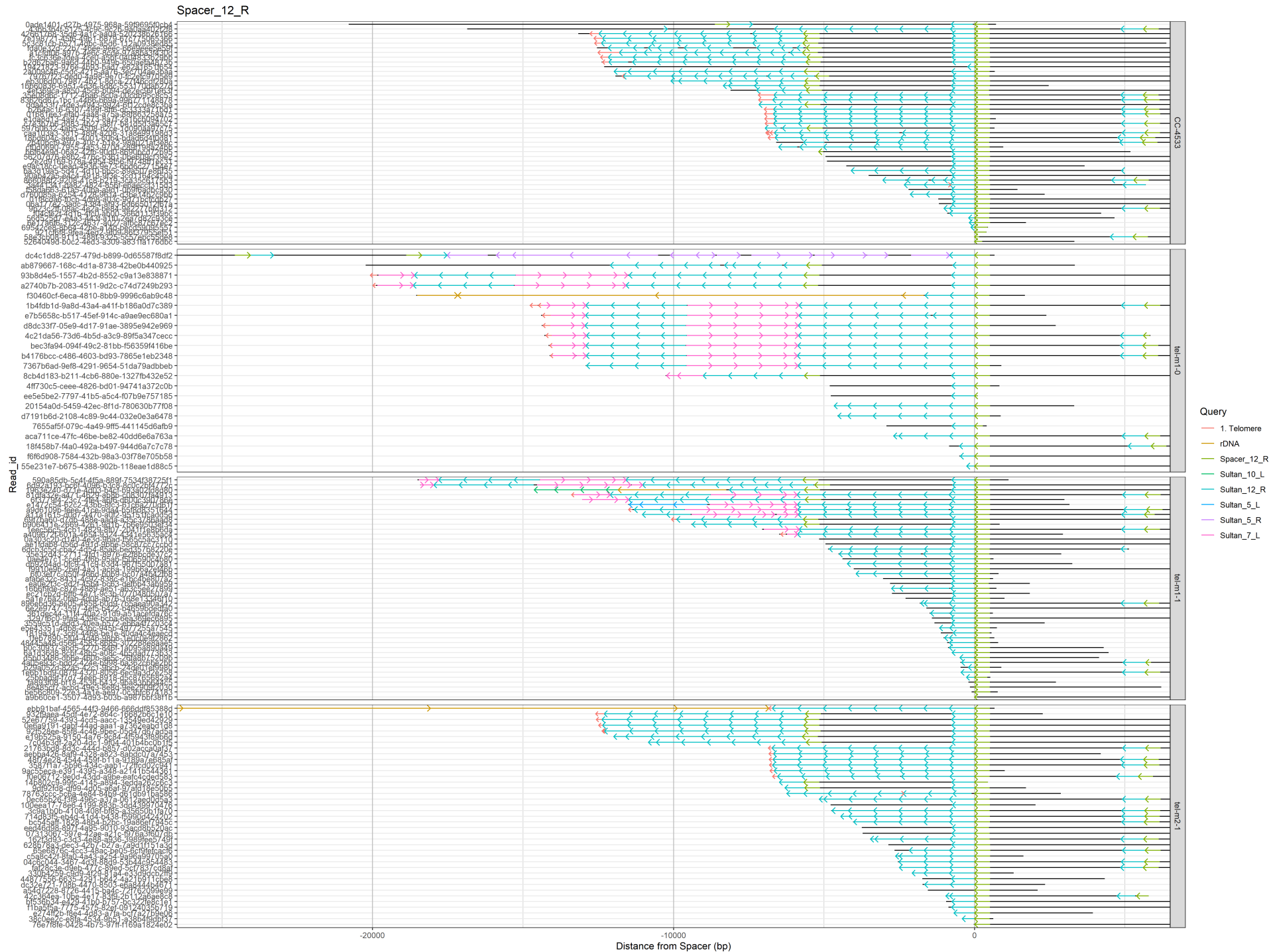




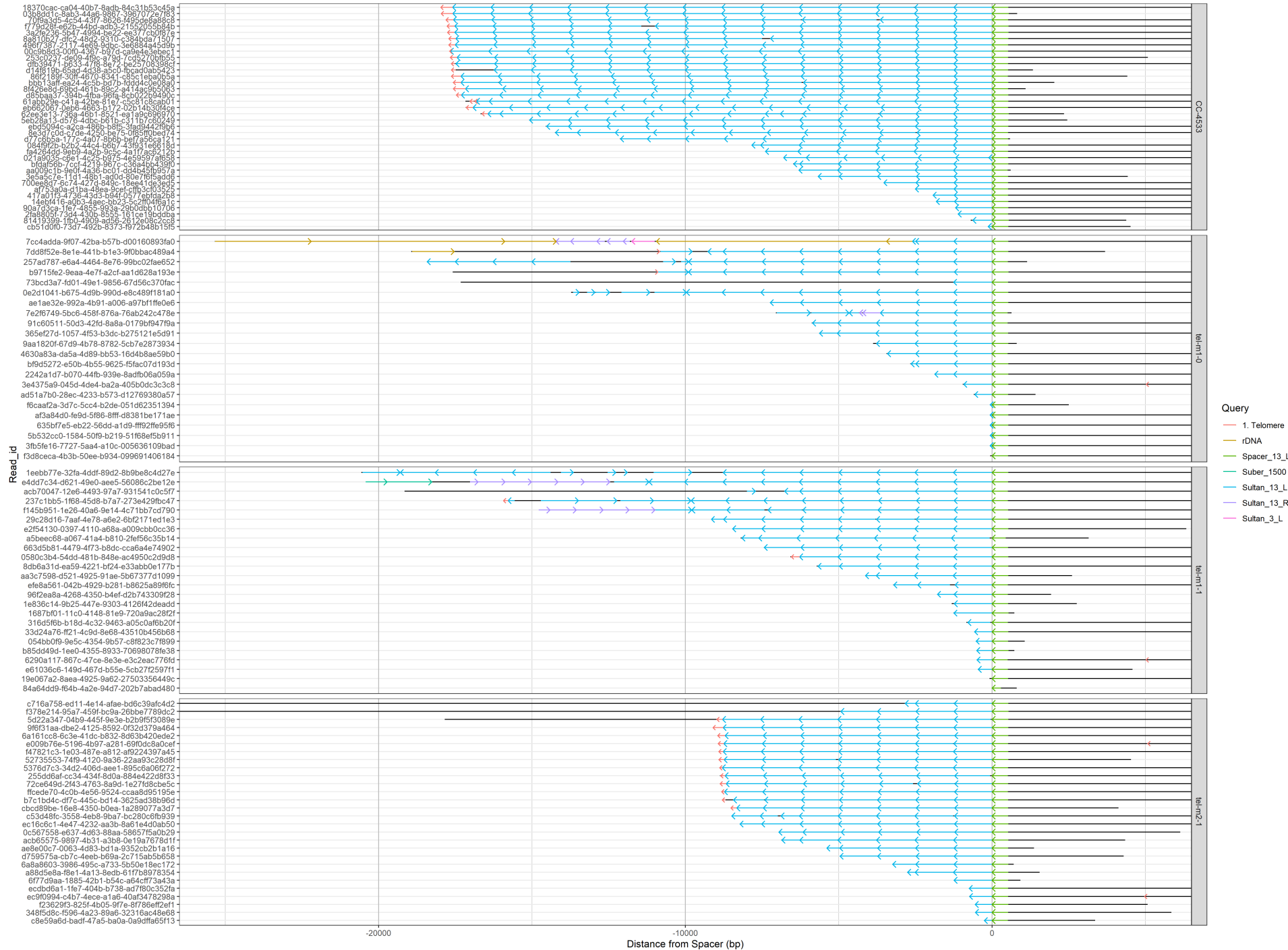


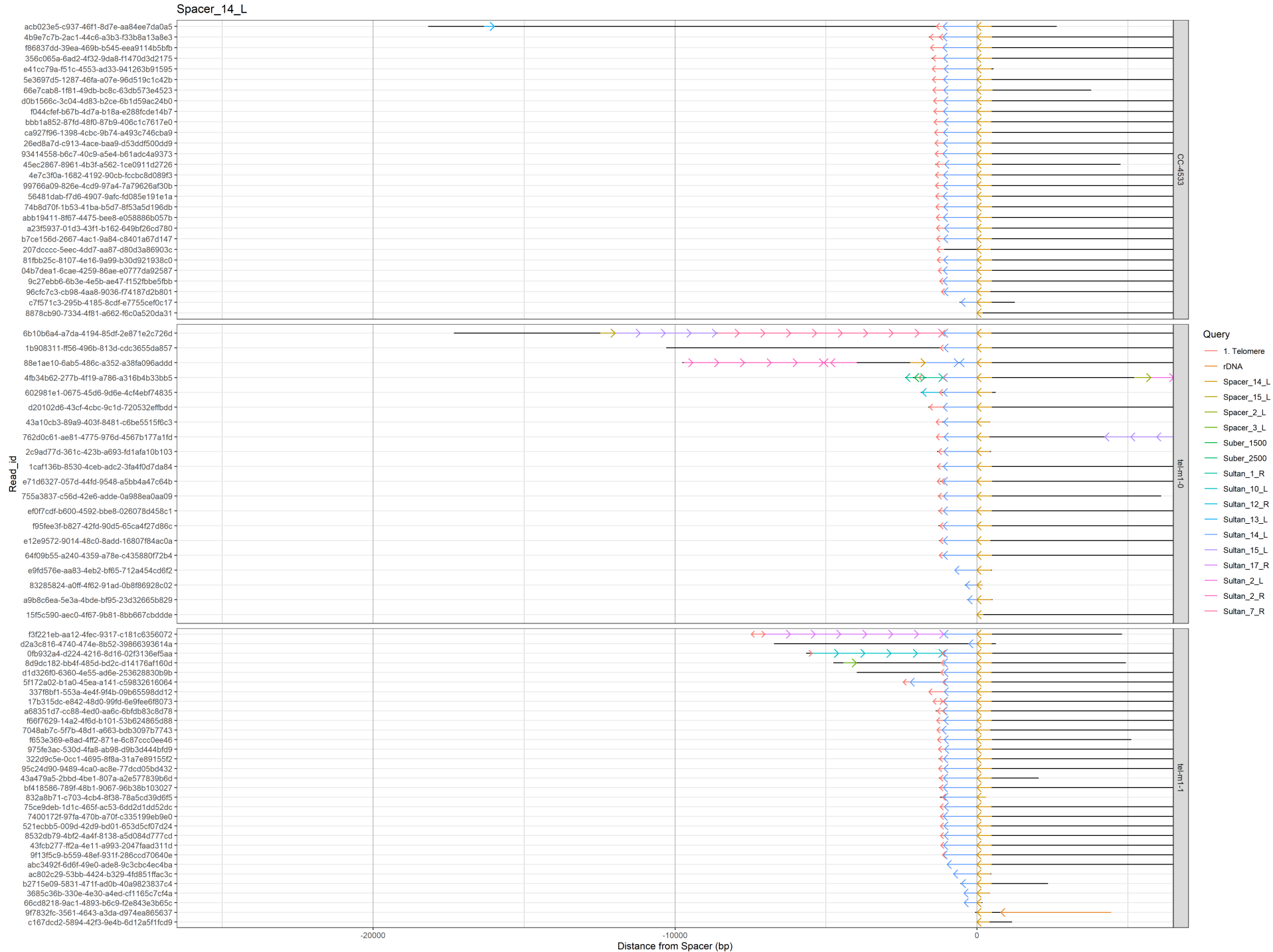


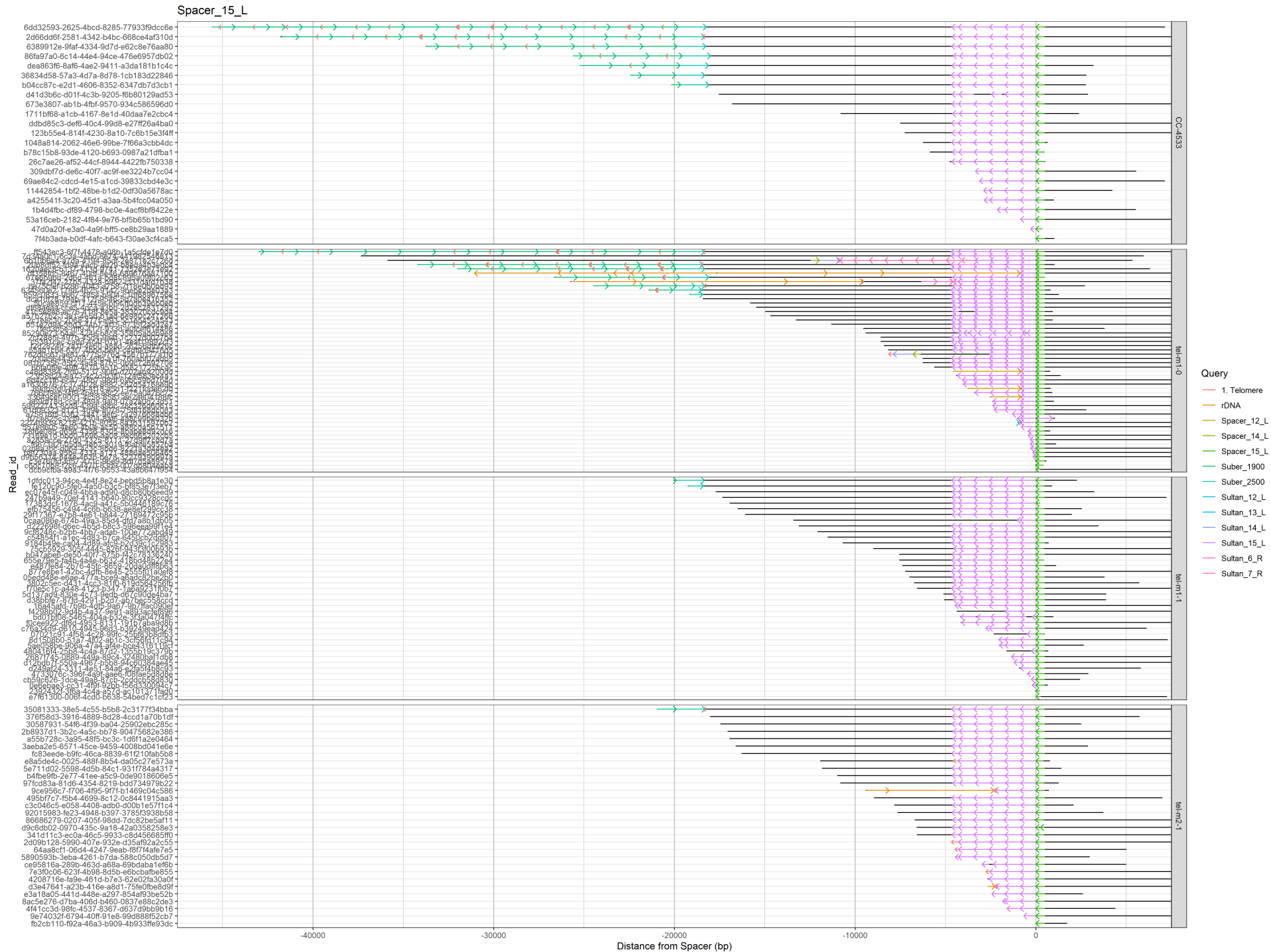


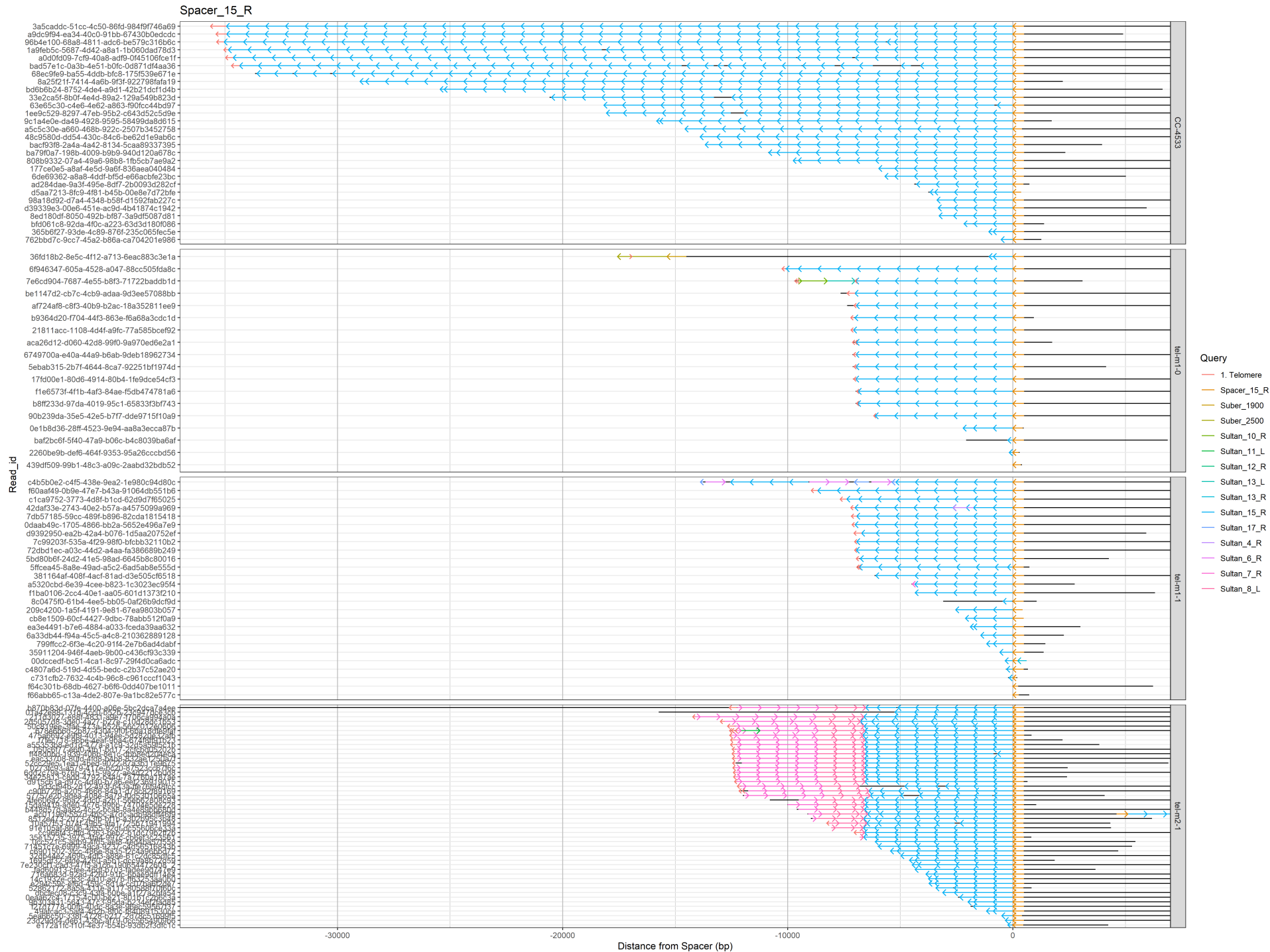


Spacer_13_L

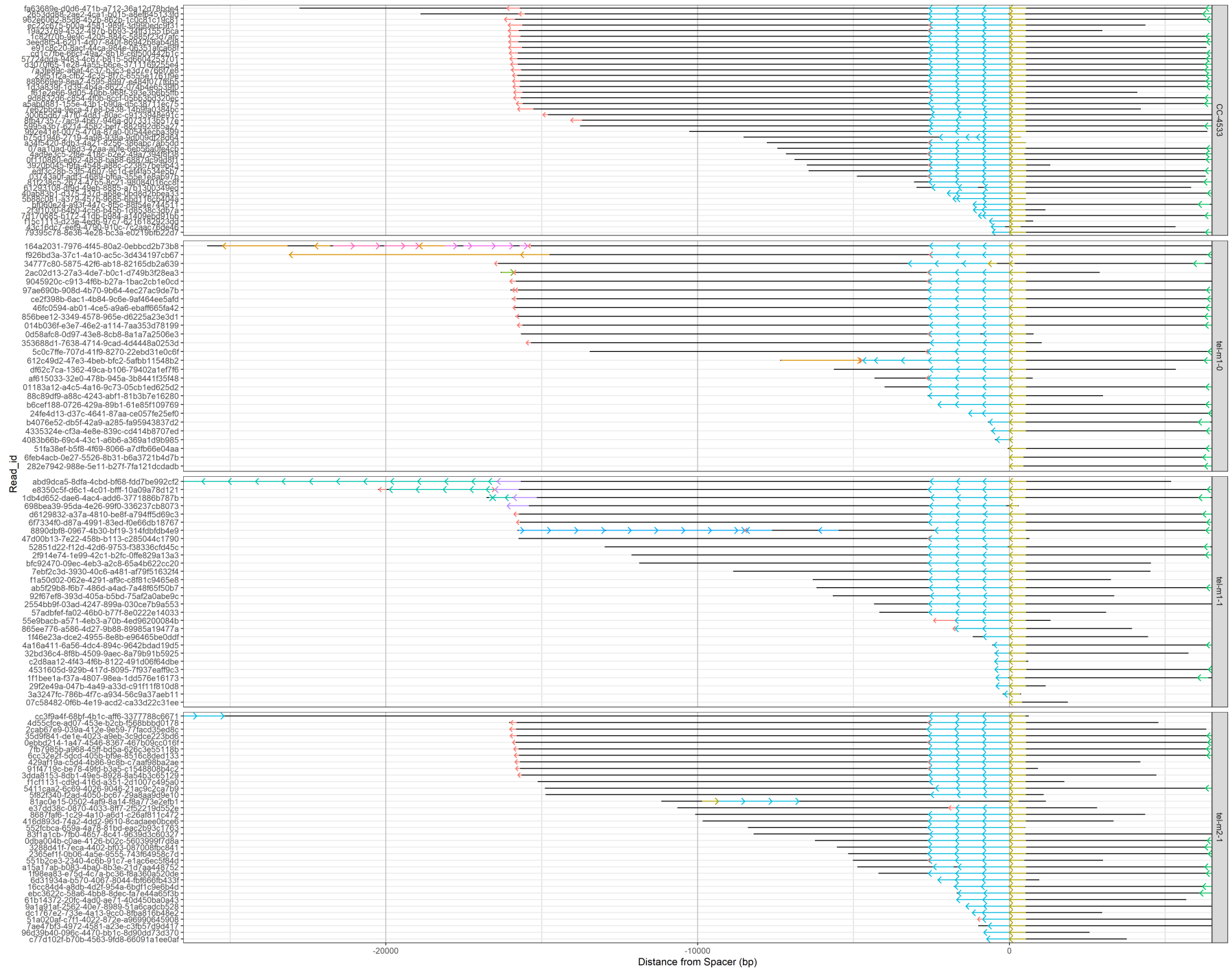








Spacer_16_L



Spacer_16_R

