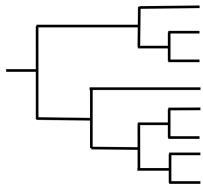


core genome
phylogeny



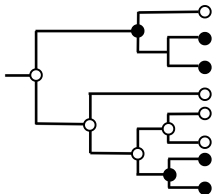
gene presence/
absence matrix

genes

genomes									
1	0	1	0	0	1	0	1	1	
1	0	1	0	0	1	0	1	0	...
0	0	1	0	1	1	0	1	1	▶
1	0	1	0	0	1	1	1	1	
									⋮

▼

ancestral state
reconstruction



fit compound
Poisson GLM

gene
gain/loss
events

