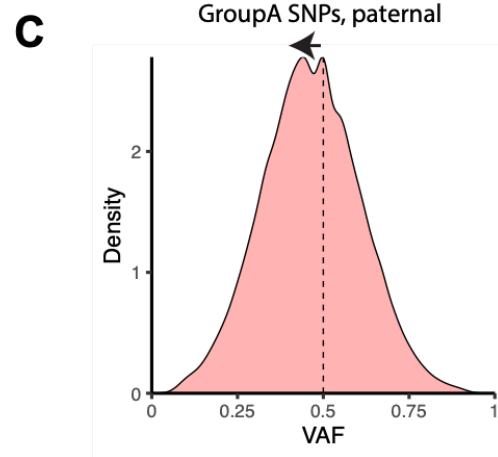
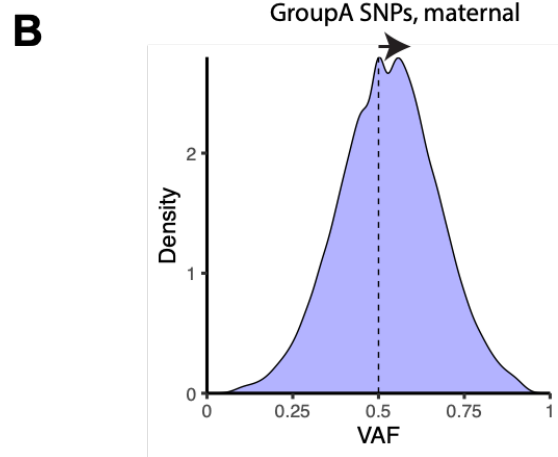
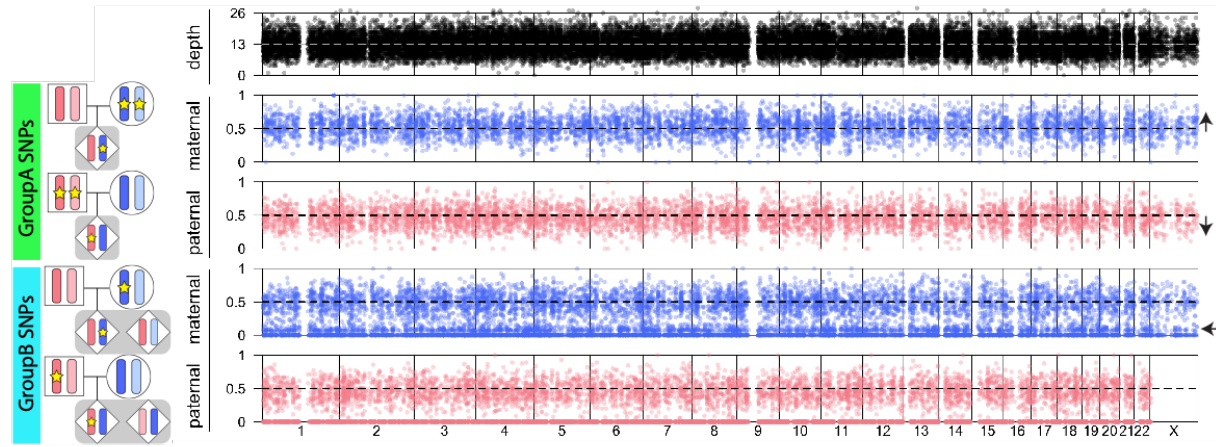


# **A** Placenta biopsy with maternal contamination (6.6%)



**Supplemental Figure S4. Variants from placenta biopsy with maternal contamination.** (A) In maternal GroupB SNPs, there are low VAF variants throughout the entire genome, which suggests maternal contamination (marked with an arrow). Blue and red dots represent maternally and paternally inherited variants, respectively. The gray dashed line on the depth plot represents the mean autosomal depth. The black dashed lines on the VAF plots represent VAF=0.5. (B) Maternal GroupA variants have an increased mean VAF of 0.530. (C) In contrast, paternal GroupA variants show a decreased mean VAF of 0.464.