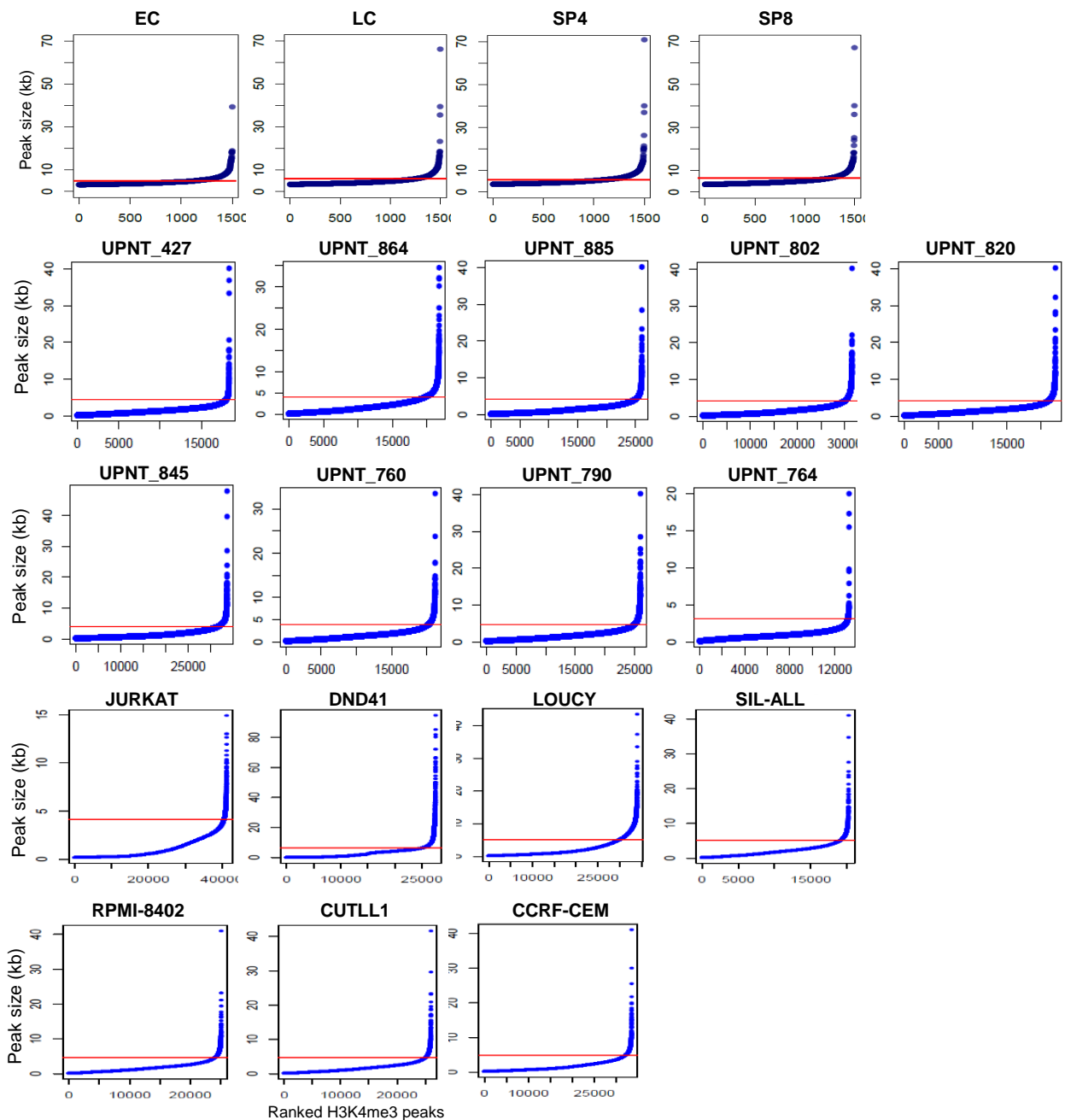
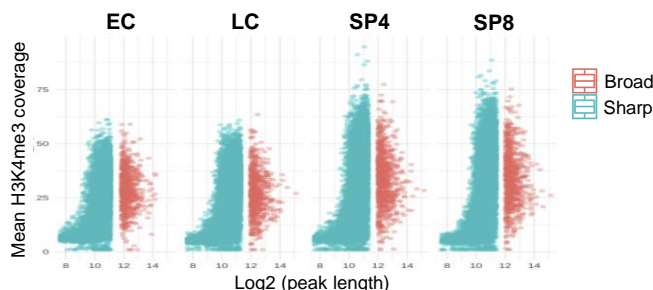
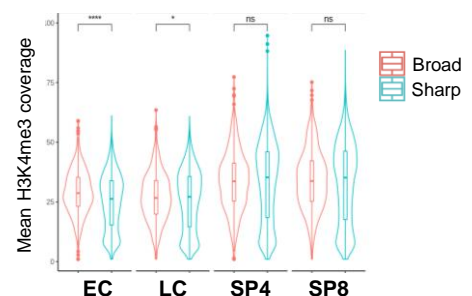


A**B****C**

Supplemental Figure S2: Identification of Broad H3K4me3 domains in the different samples. A) The H3K4me3 peaks were ranked in function of their size for thymic T cell subpopulations, primary T-ALL samples and T-ALL cell lines. The inflection point allowing the selection of Broad H3K4me3 domain is indicated by a red line. **B)** Comparison of H3K4me3 signal and peak length for the H3K4me3 sharp peaks and broad H3K4me3 domain in the indicated T cell samples. **C)** Distribution of H3K4me3 signal at H3K4me3 sharp peaks and Broad H3K4me3 domain in the indicated T cell samples. Significance was assessed by a Wilcoxon test. *** $P < 0.001$, * $P < 0.05$; ns, not significant.