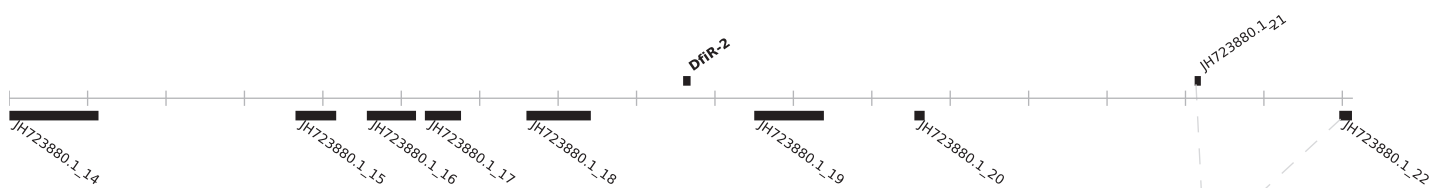


Supplemental Figure S8. Shared synteny between *D. discoideum* and *D. firmibasis* Class I RNA loci.

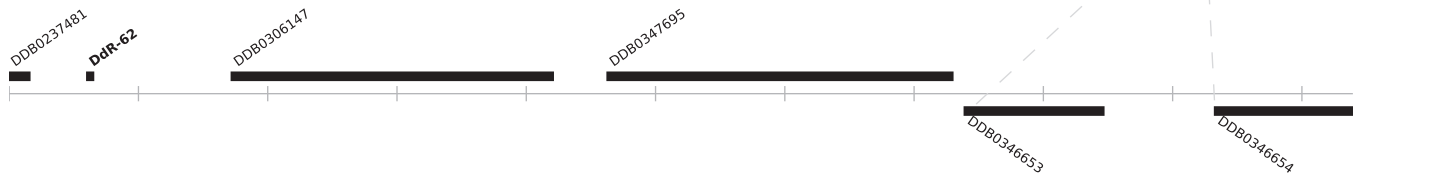
Representation of *D. firmibasis* (dfi) Class I RNA loci +/- 10 kb that share synteny with *D. discoideum* (ddi) Class I RNAs supported by at least two orthologous genes (connected with dashed lines).

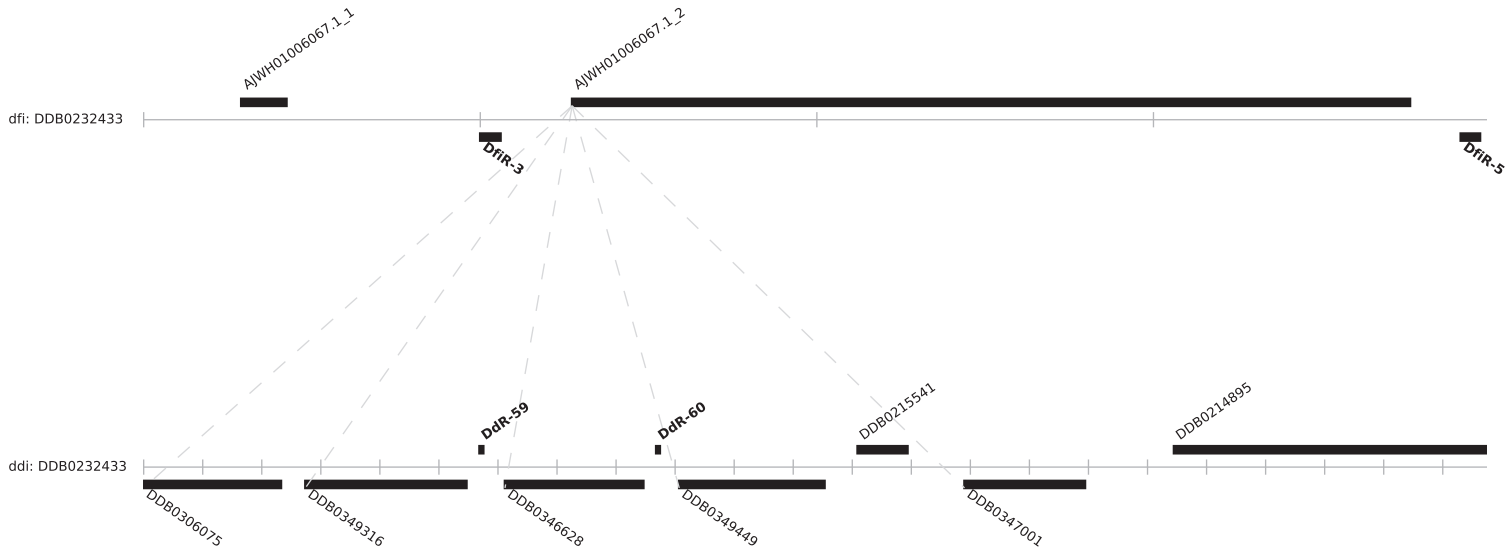
Chromosome/contig names are given to the left of the genes. Genes situated on the forward and the reverse strand are indicated above and below the chromosome/contig, respectively. Vertical grey lines are given at every 1000 nt.

dfi: DDB0232433



ddi: DDB0232433





dfi: DDB0232430



AJWH01002102.1_2

AJWH01002102.1_3

AJWH01002102.1_4

DfIR-4

ddi: DDB0232430



DDB0305703

DDB0231396

DDB0308705

DdR-46

DdR-25

DdR-47

