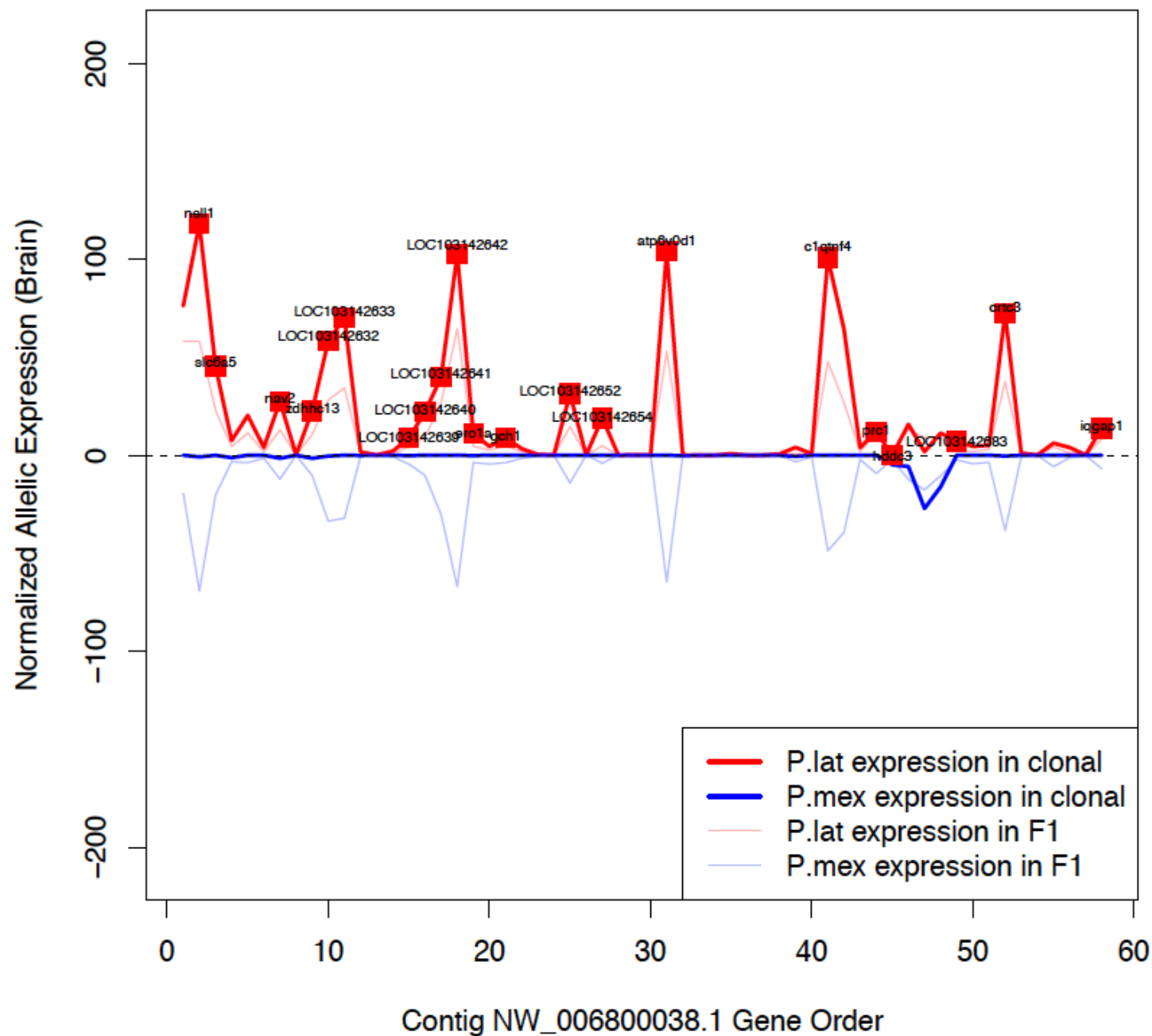
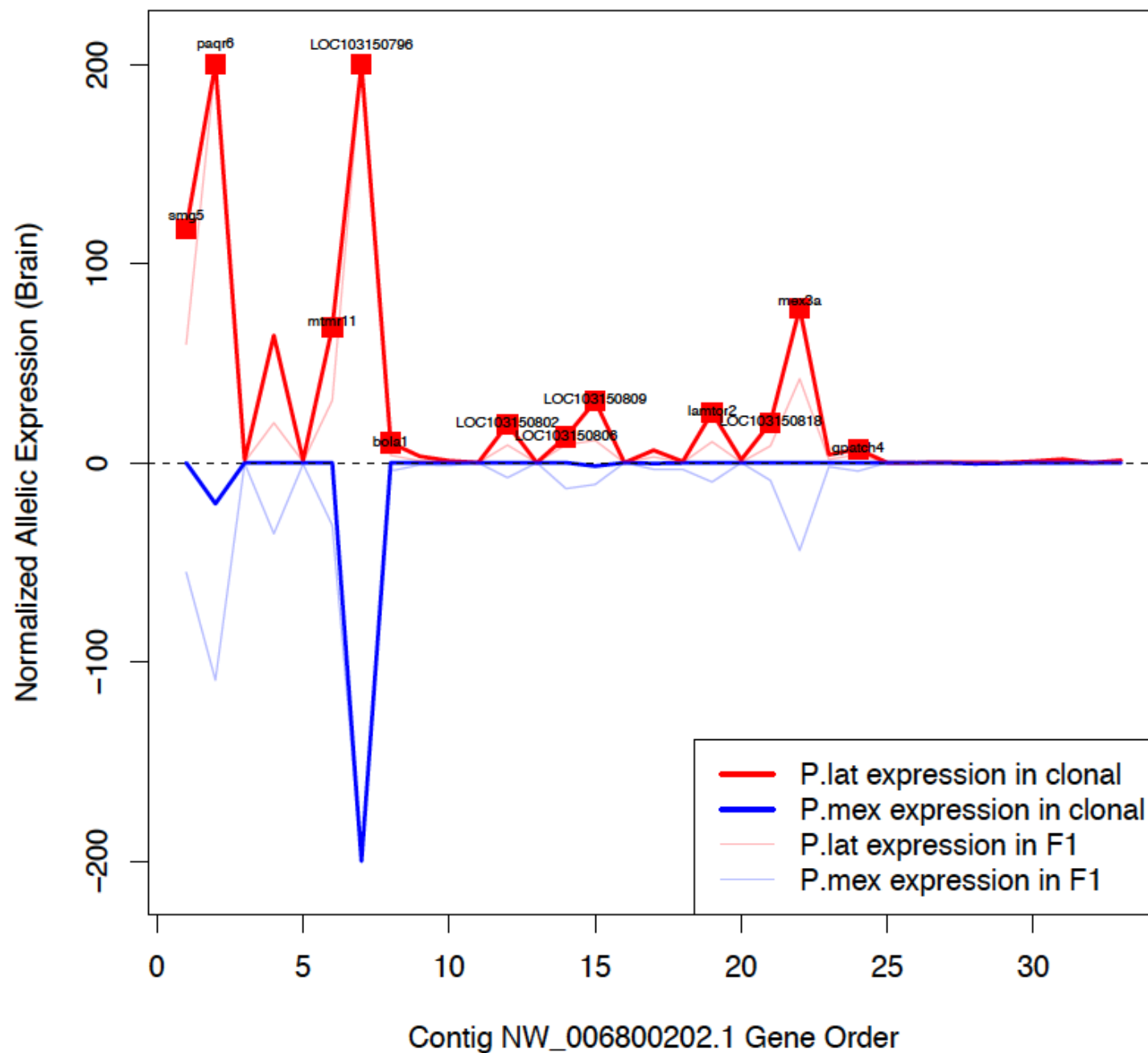


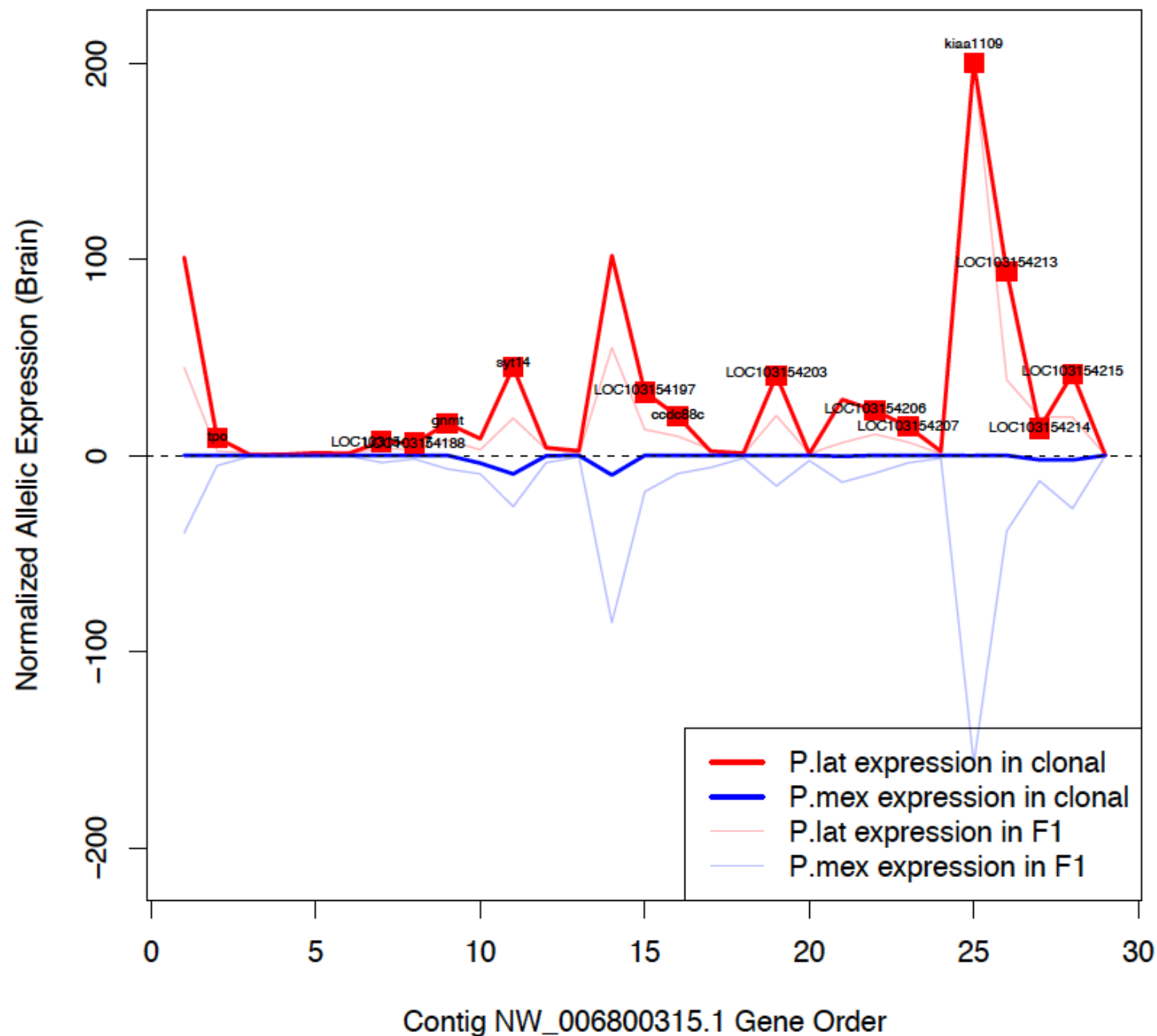
# NW\_006800038.1



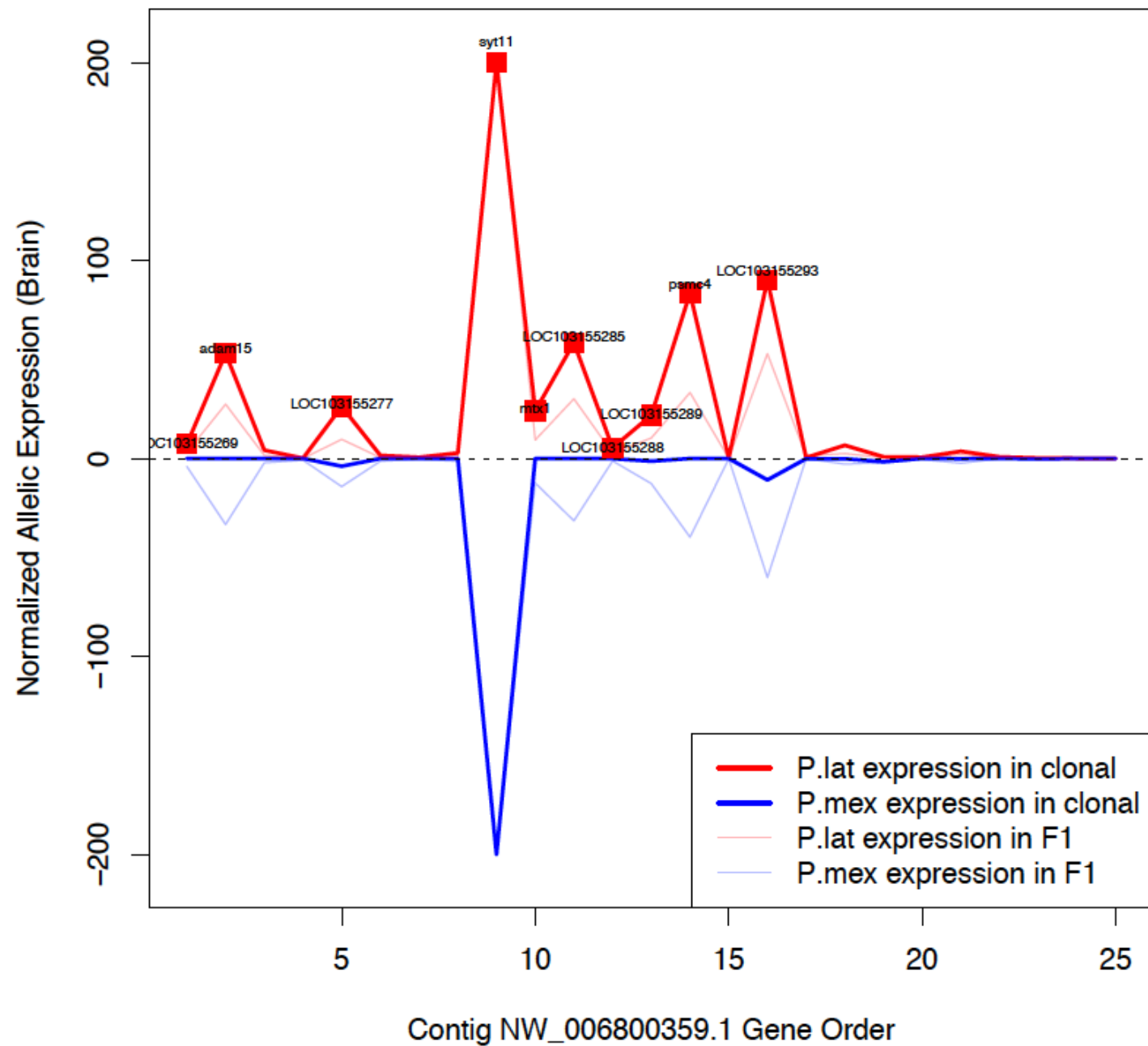
# NW\_006800202.1



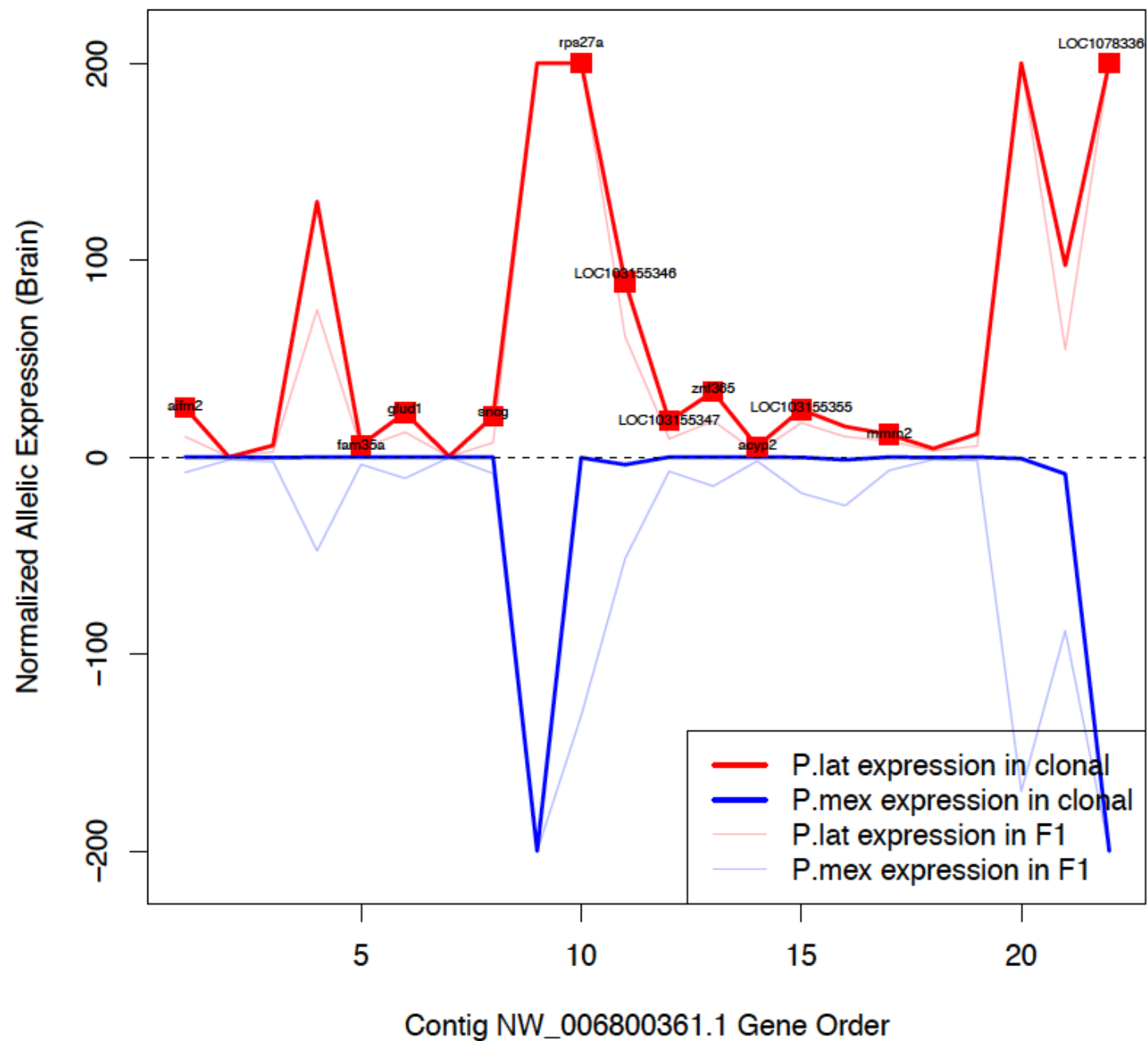
# NW\_006800315.1



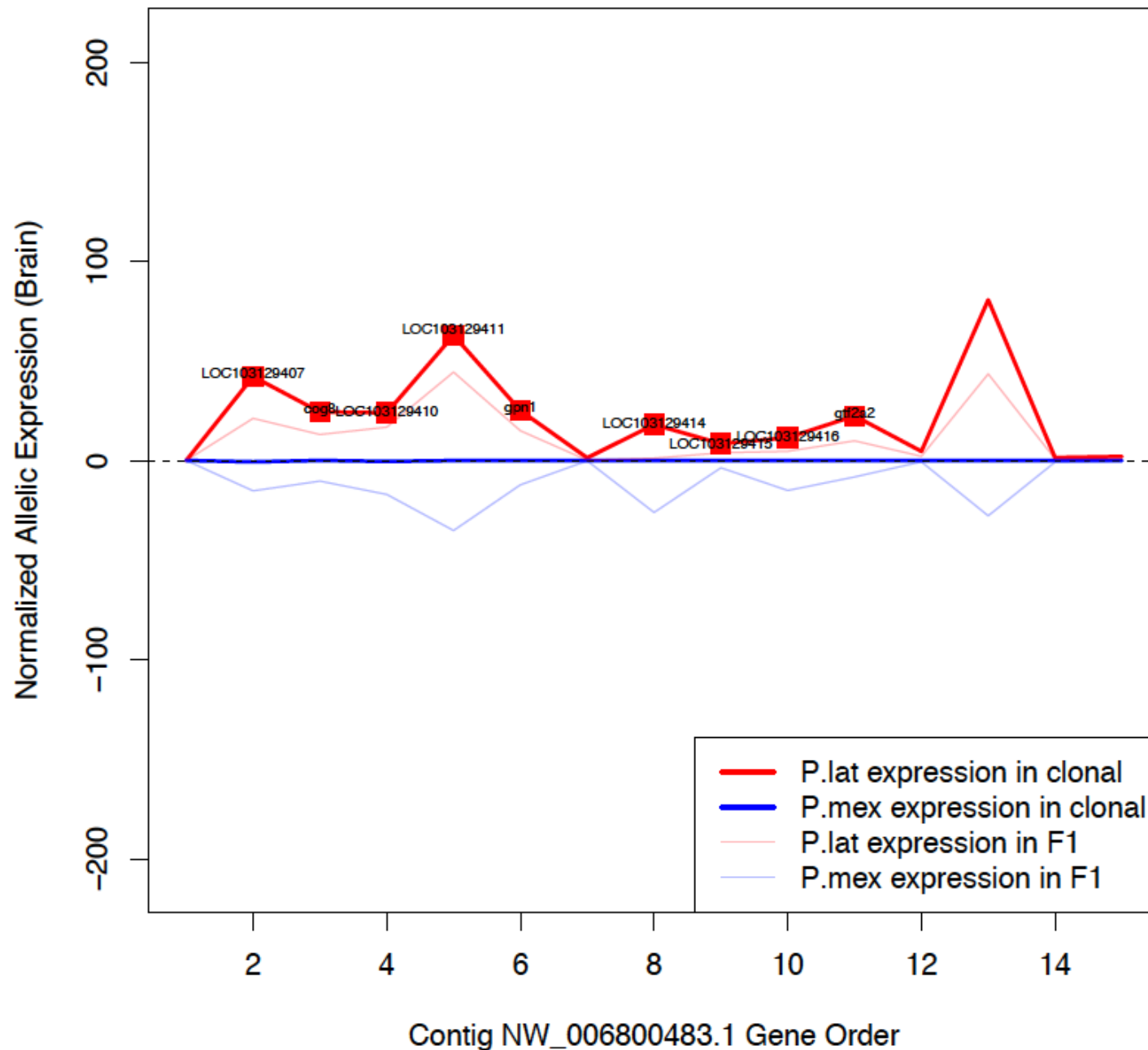
# NW\_006800359.1



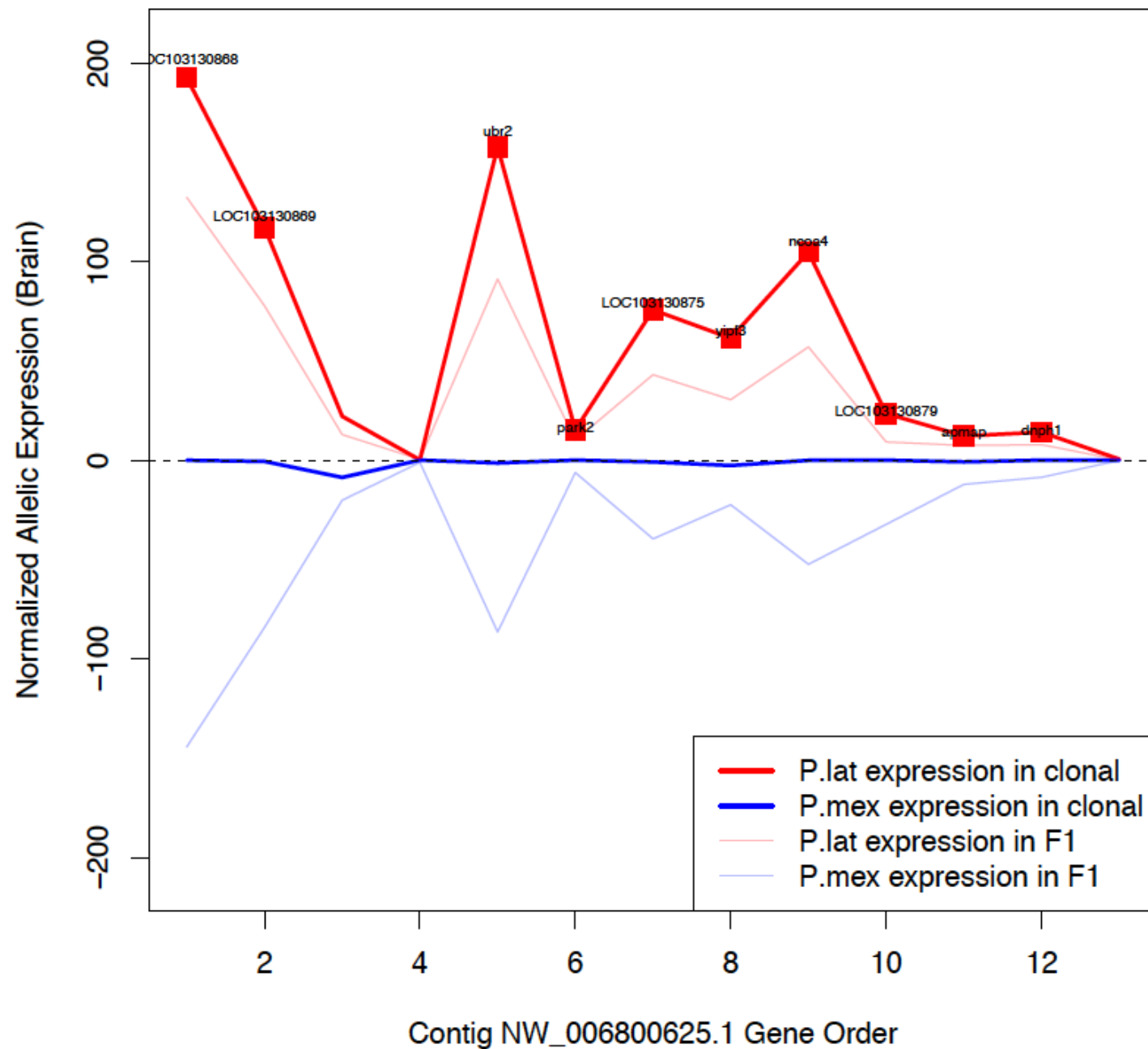
# NW\_006800361.1



# NW\_006800483.1



# NW\_006800625.1



**Supplemental Figure S12. Clone#2 contigs exhibiting *P. latipinna* biased expression in *P. formosa*** Allelic expression of two contigs that are enriched of *P. latipinna* biased genes in all organs are plotted. X-axis is the order of gene on contig, and Y-axis represents normalized allelic expression of *P. latipinna* (above X-axis), *P. mexicana* (below X-axis) alleles. Solid lines of different colors (red: *P. latipinna* allele; blue *P. mexicana* allele) represent both parental allelic expression in the *P. formosa*, and fainted lines of different colors (red: *P. latipinna* allele; blue *P. mexicana* allele) represent allelic expression in the artificial interspecies hybrid. Red squares label *P. latipinna* alleles that show dominant expression in clonal fish, but equal expression as *P. mexicana* alleles in the F<sub>1</sub> hybrids.