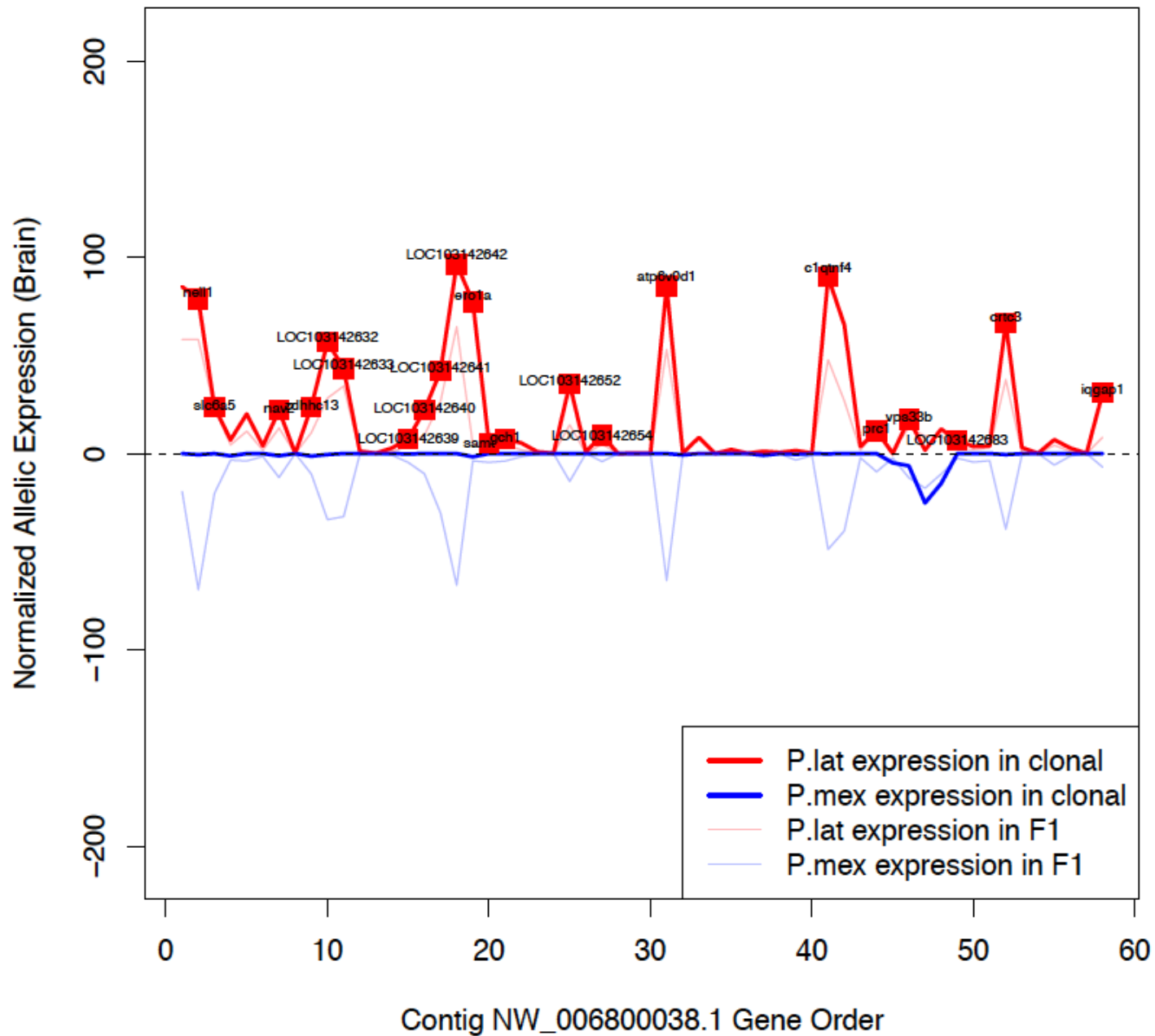
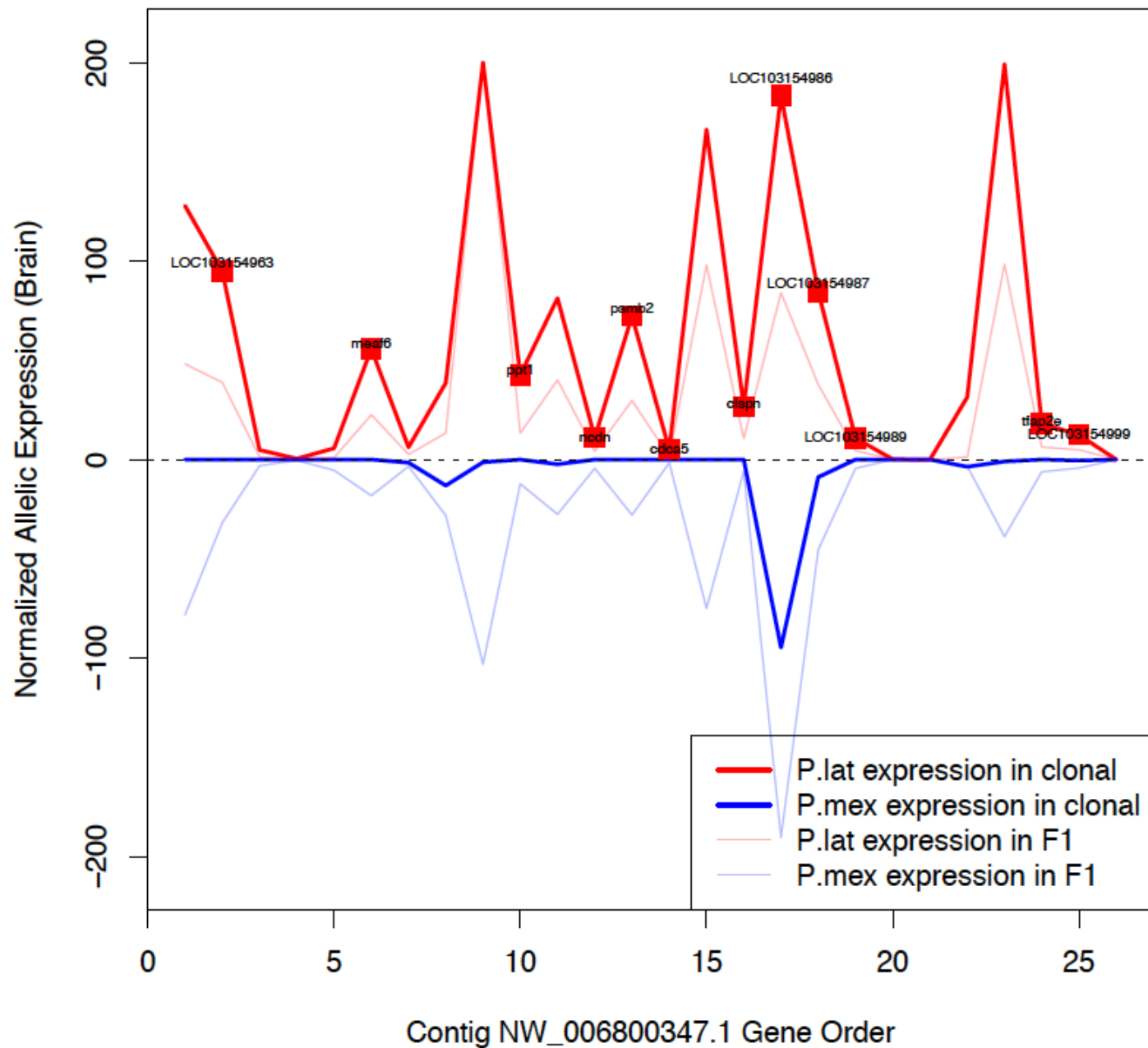


# NW\_006800038.1

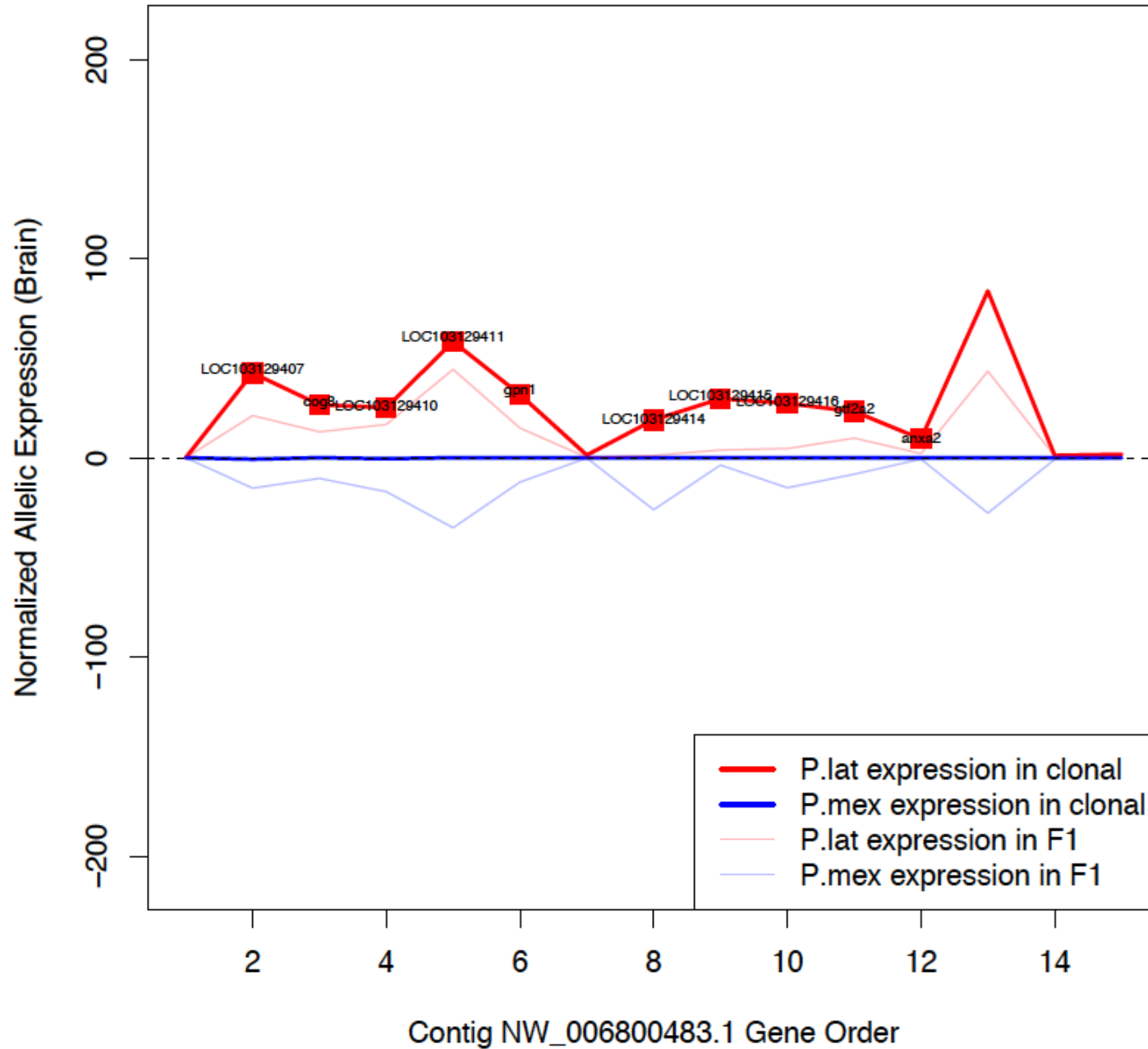




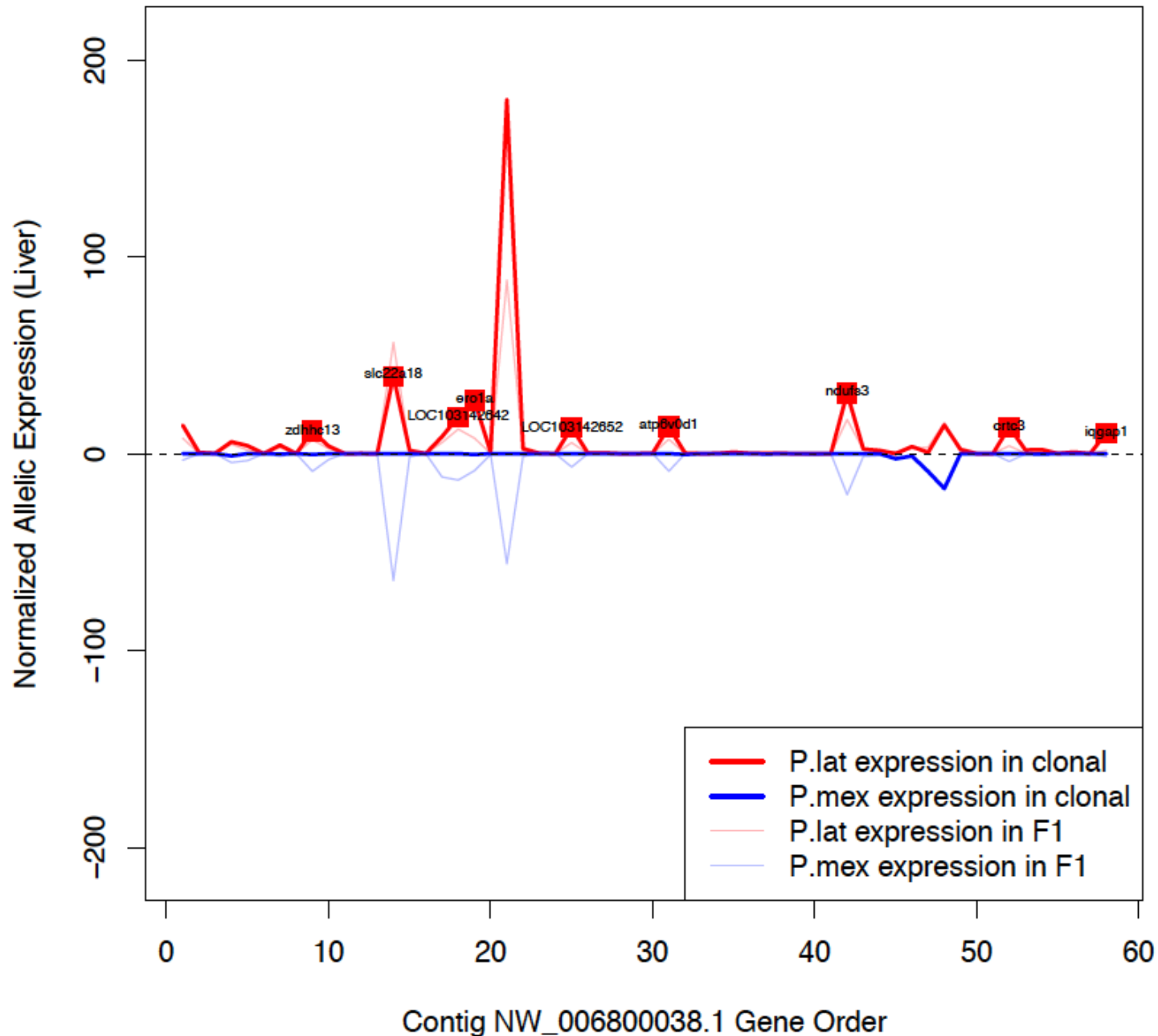
# NW\_006800347.1



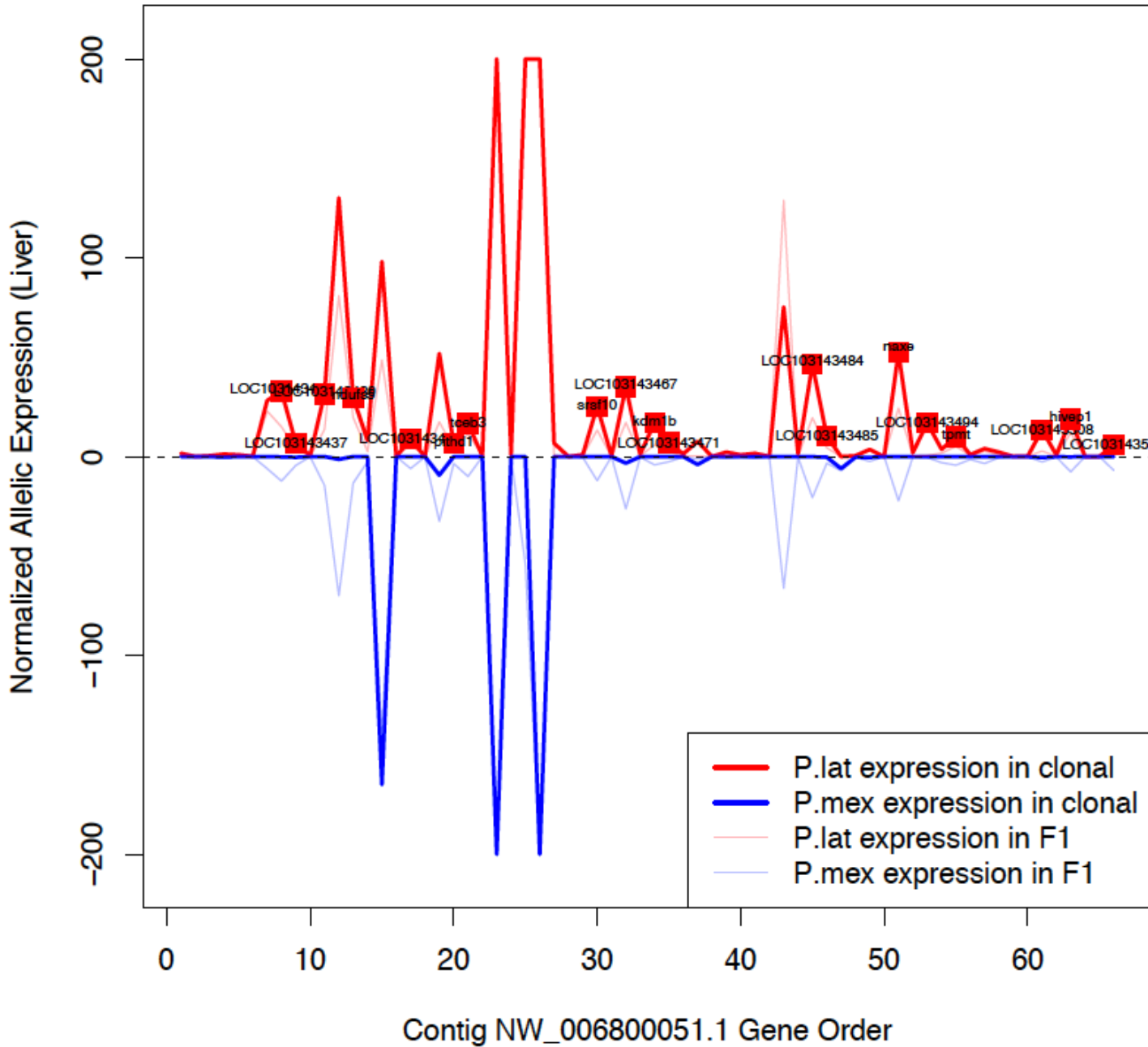
# NW\_006800483.1



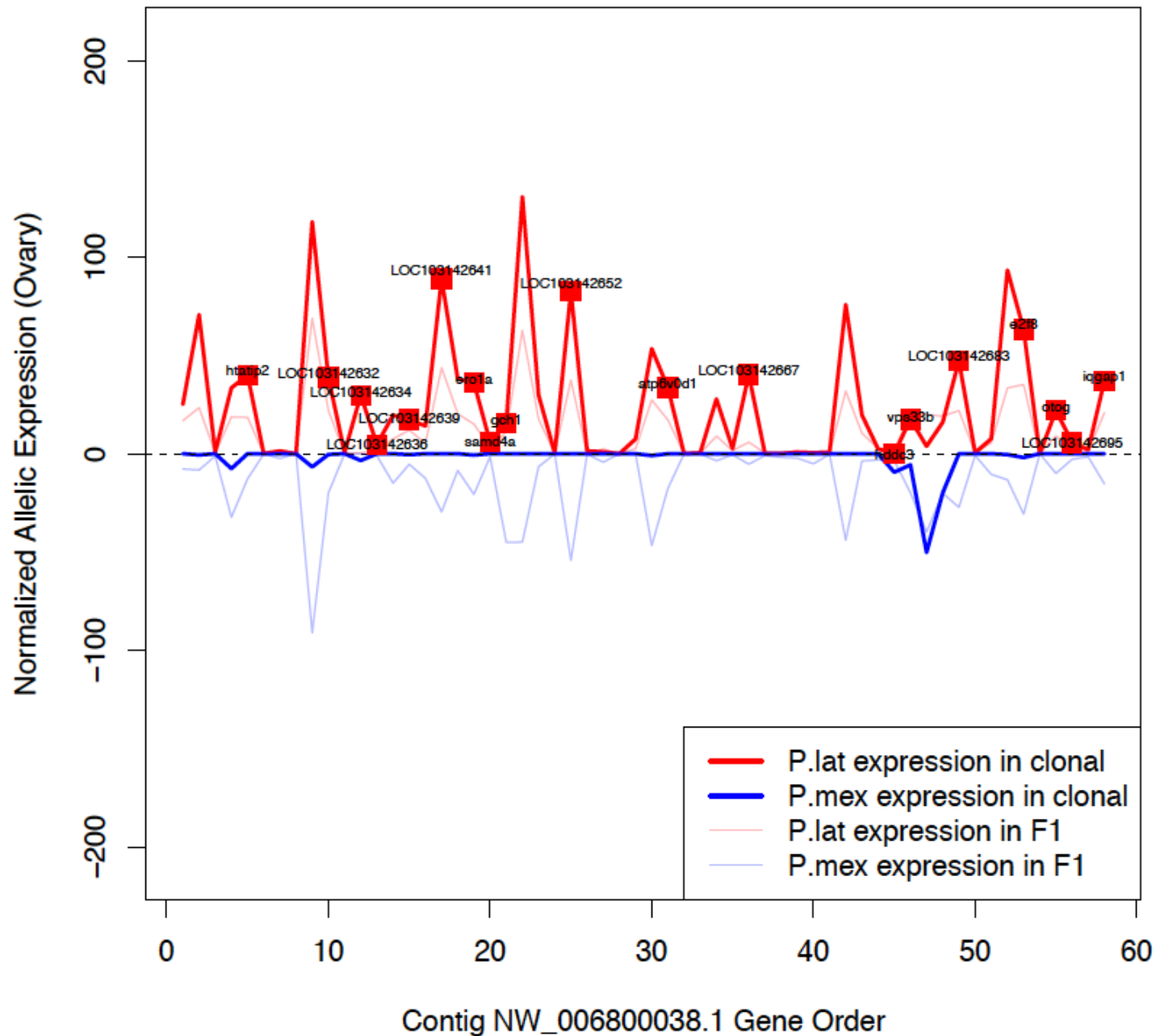
# NW\_006800038.1



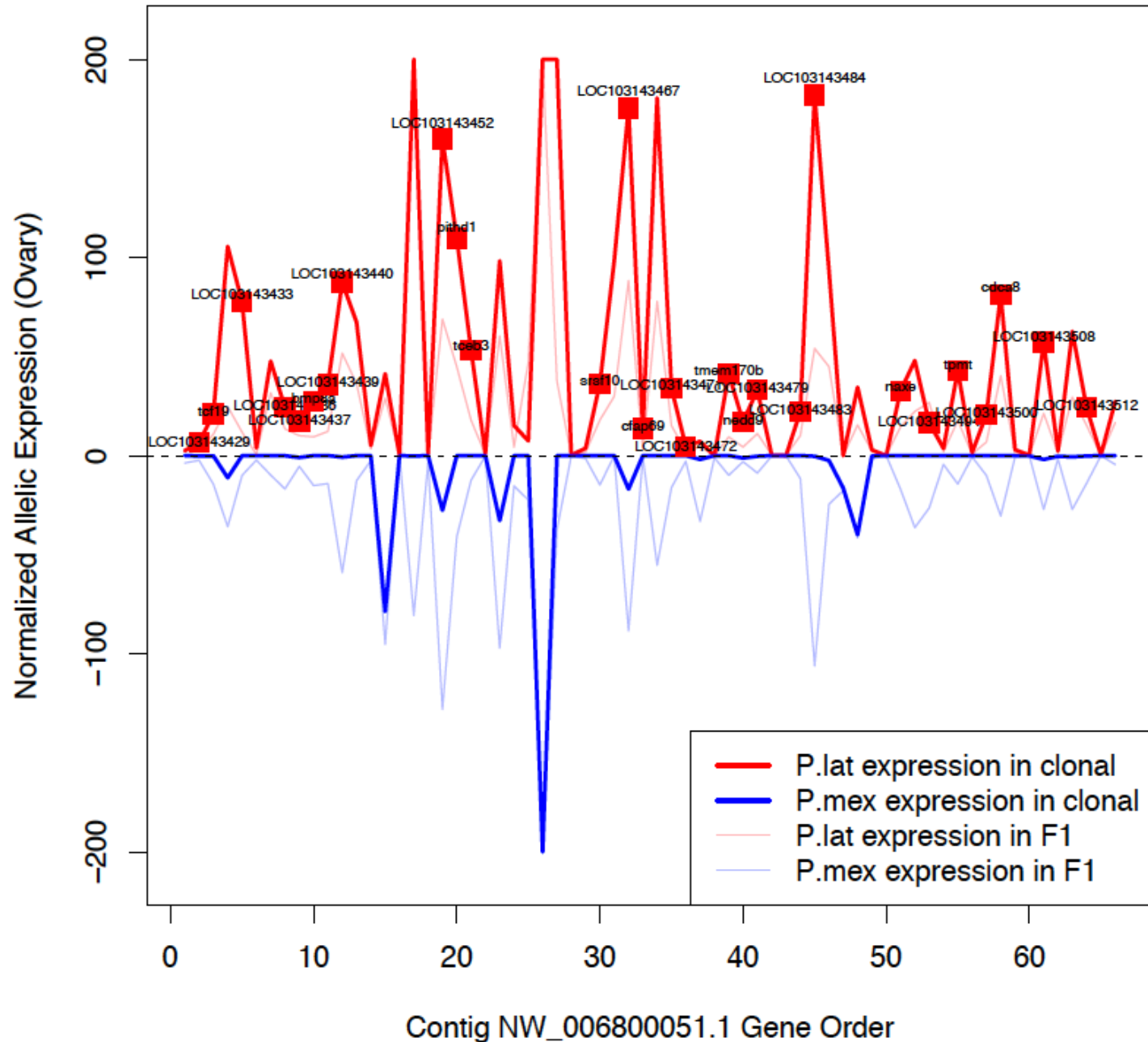
# NW\_006800051.1



# NW\_006800038.1

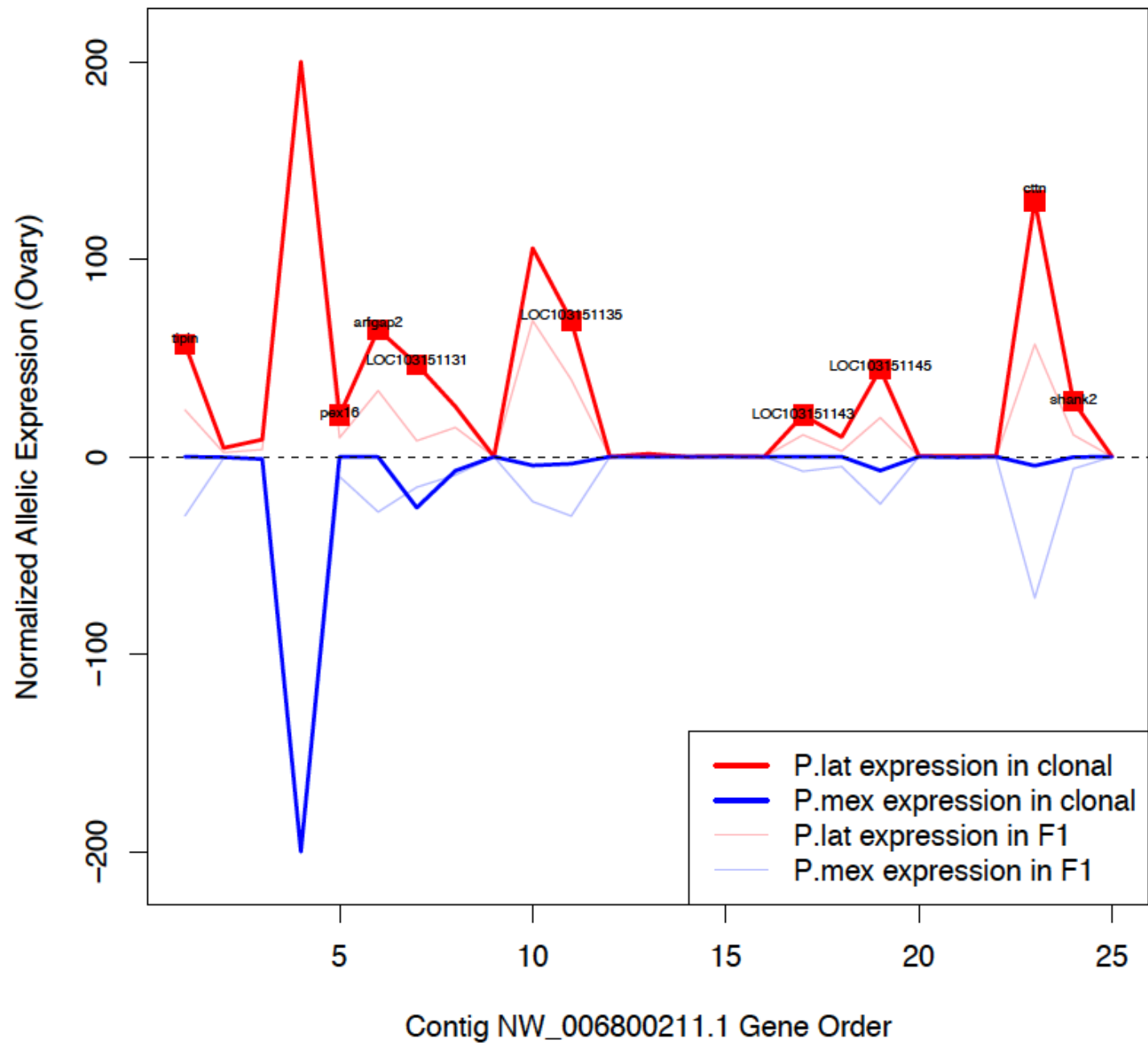


# NW\_006800051.1

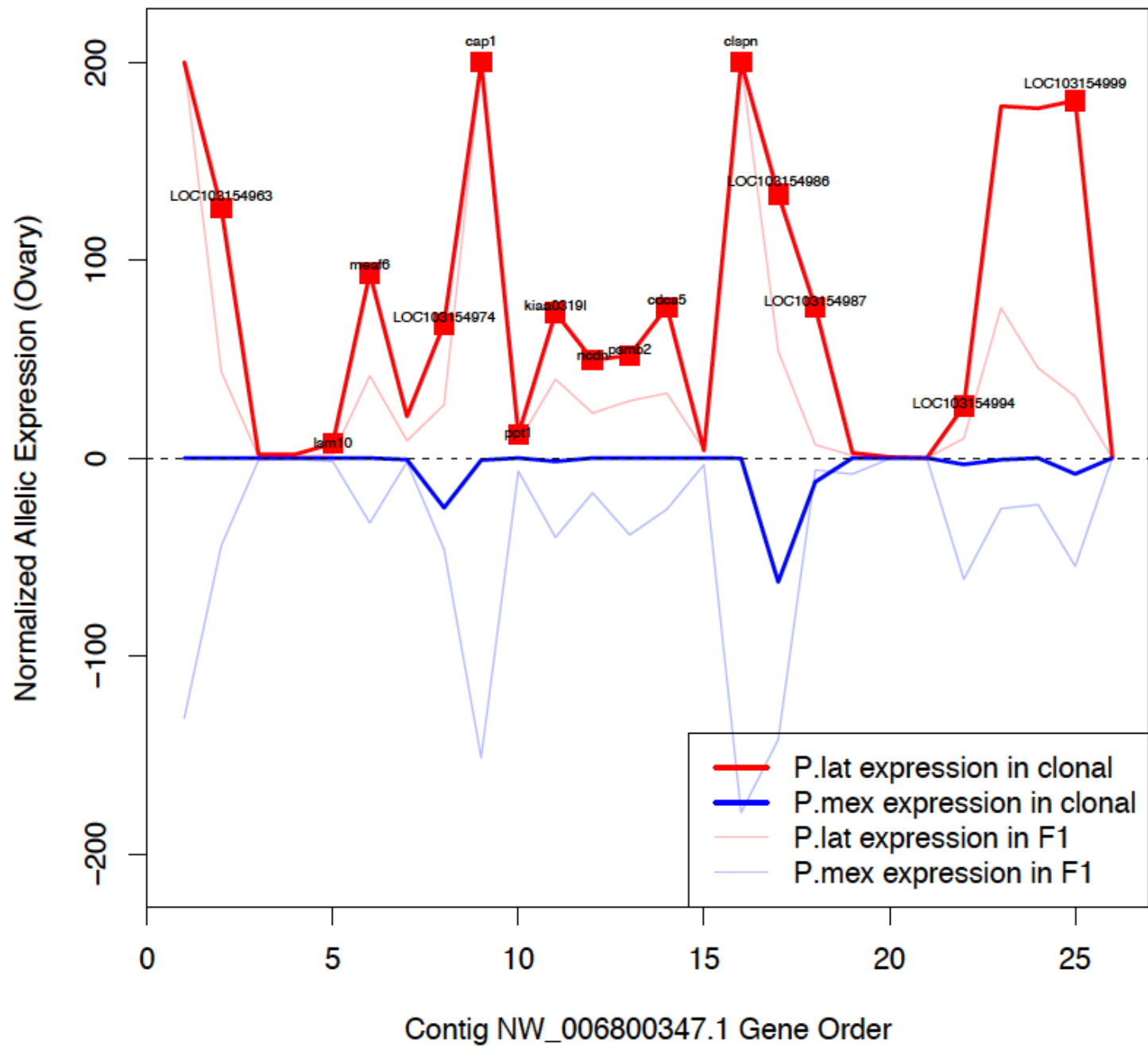




# NW\_006800211.1



# NW\_006800347.1



**Supplemental Figure S11. Clone#1 contigs exhibiting *P. latipinna* biased expression in *P. formosa*** Allelic expression of two contigs that are enriched of *P. latipinna* biased genes in all organs are plotted. X-axis is the order of gene on contig, and Y-axis represents normalized allelic expression of *P. latipinna* (above X-axis), *P. mexicana* (below X-axis) alleles. Solid lines of different colors (red: *P. latipinna* allele; blue *P. mexicana* allele) represent both parental allelic expression in the *P. formosa*, and faded lines of different colors (red: *P. latipinna* allele; blue *P. mexicana* allele) represent allelic expression in the artificial interspecies hybrid. Red squares label *P. latipinna* alleles that show dominant expression in clonal fish, but equal expression as *P. mexicana* alleles in the F<sub>1</sub> hybrids.