

Supplemental figure S4

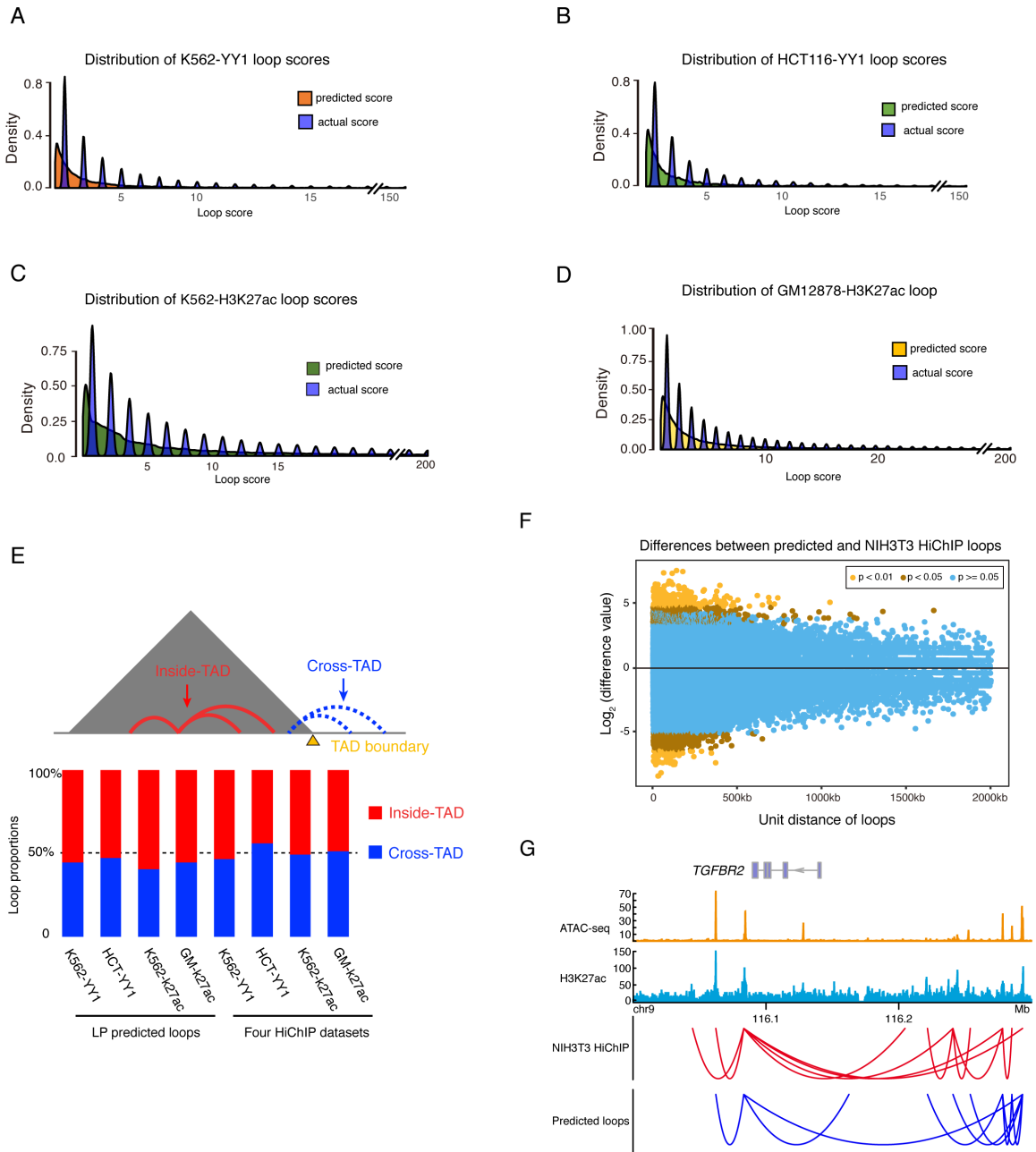


Figure S4. Distributions of actual loop scores and predicted loop scores (A-D). (A) K562-YY1 HiChIP dataset. (B) K562-H3K27ac HiChIP dataset. (C) GM12878-H3K27ac HiChIP dataset. (D)

HCT116-YY1 HiChIP dataset. (E) TAD boundary Assessment. Stacked bar graph displaying the proportion of LoopPredictor (LP) called loops, called from 4 different input datasets, and HiChIP loops alone. (F) Differences between predicted and NIH3T3-H3K27ac HiChIP loops. Loops with a p-value ≥ 0.05 (blue dots) were classified as non-significant, loops with a p-value < 0.05 (brown dots) were labelled significant, and differences with a p-value < 0.01 (yellow dots) were marked highly significant. The vast majority of loops of loops showed no significant differences between the two sets of loops. (G) An example for comparing predicted and NIH3T3 HiChIP loops.