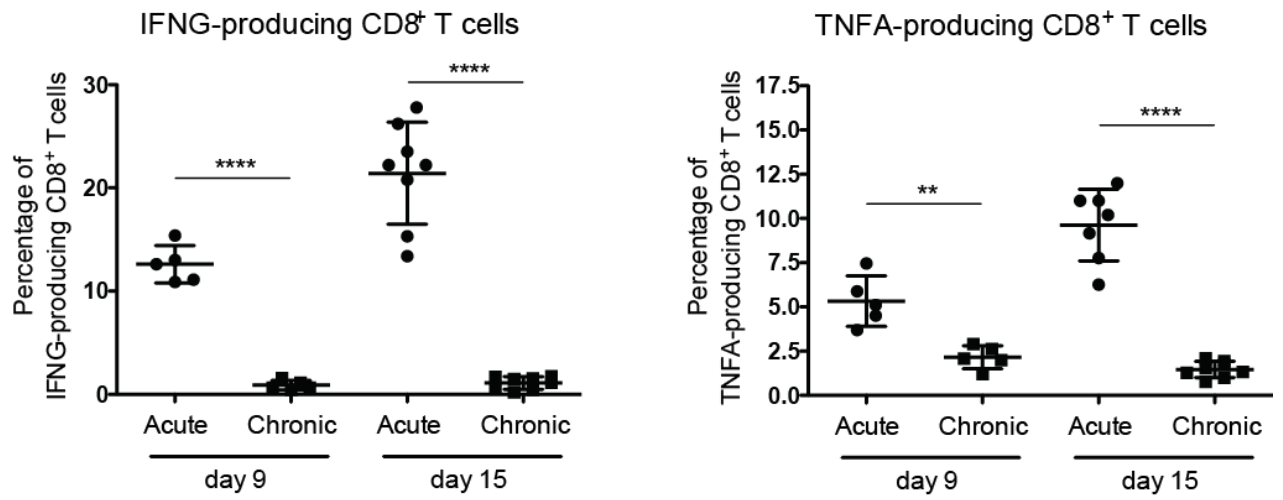
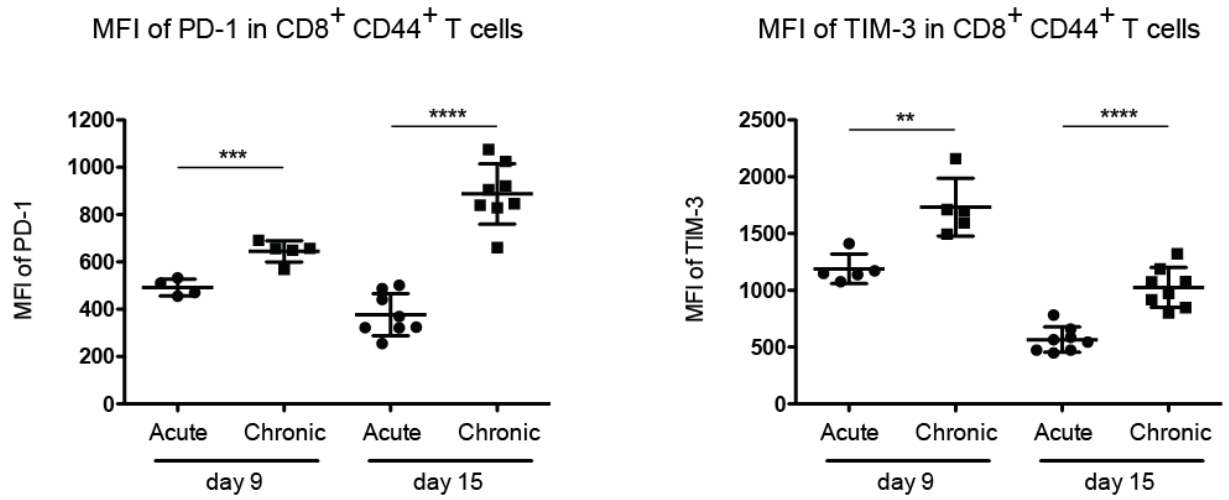


Supplemental Fig. S1. Analysis of T cell responses and differentially expressed genes. (A) Percentages of IFNG- and TNFA-producing CD8⁺ T cells from acute and chronic infected mice at days 9 and 15 p.i.. For each group and time point, the mean \pm SEM (standard error of the mean) is shown. (B) MFI of PD-1 and TIM-3 in CD44⁺ CD8⁺ T cells at days 9 and 15 p.i.. For each group and time point, the mean \pm SEM (standard error of the mean) is shown. (C) Percentages of IFNG-producing CD4⁺ T cells at the indicated time points postinfection. For each group and time point, the mean \pm SEM (standard error of the mean) is shown. (D) Differentially expressed genes in spleens after acute or chronic LCMV infections. Number of differentially expressed genes that were upregulated or downregulated after infection were calculated for each time point.

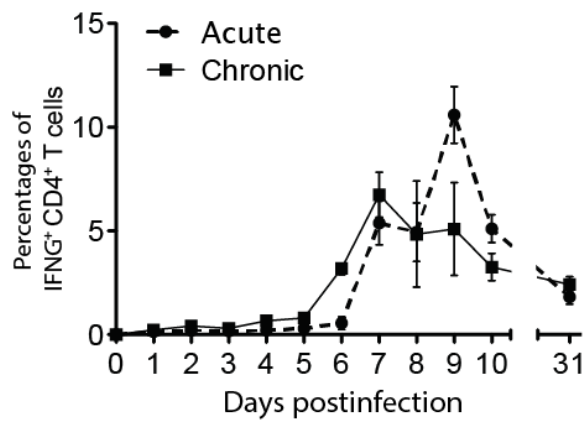
A



B



C



D

