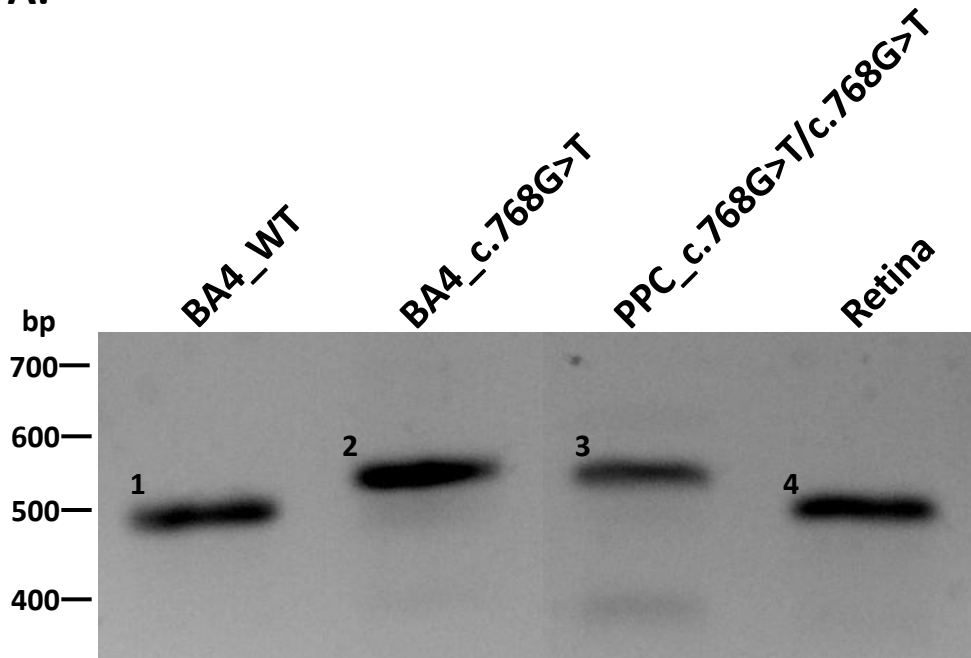


Supplemental Figure S4

Supplemental Figure S4. Splice defect due to c.768G>T in photoreceptor precursor cells. The c.768G>T variant results in 30 bp elongation of exon 6 when tested in BA4 WT and mutant clones using *RHO* exon 3 and exon 5 primers (Supplemental Table S10). Same splice defect was observed in mRNA of photoreceptor precursor cells (PPCs) of a patient carrying this variant in a homozygous state. Human retina RNA was used as a control.

A.



B.

