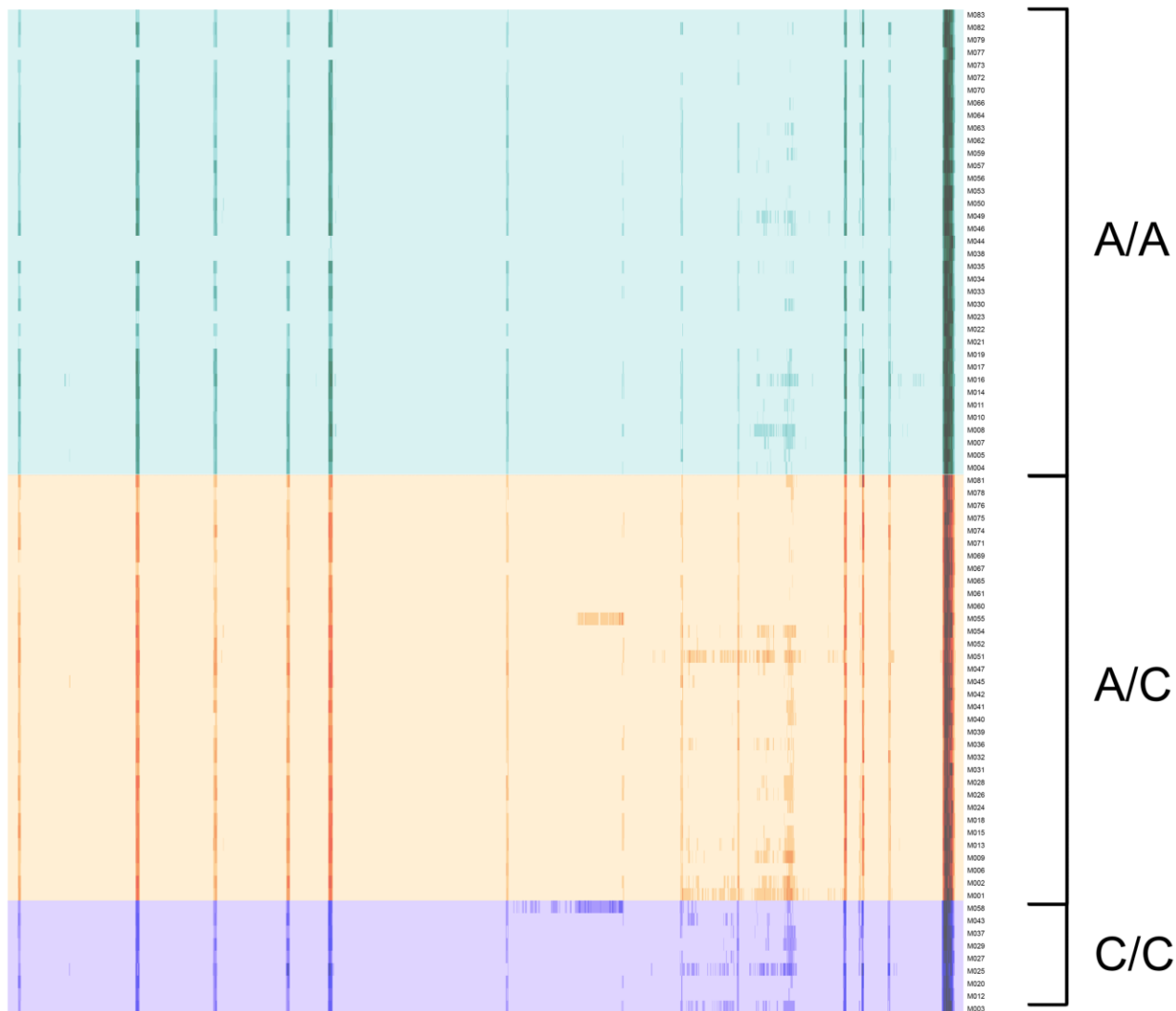
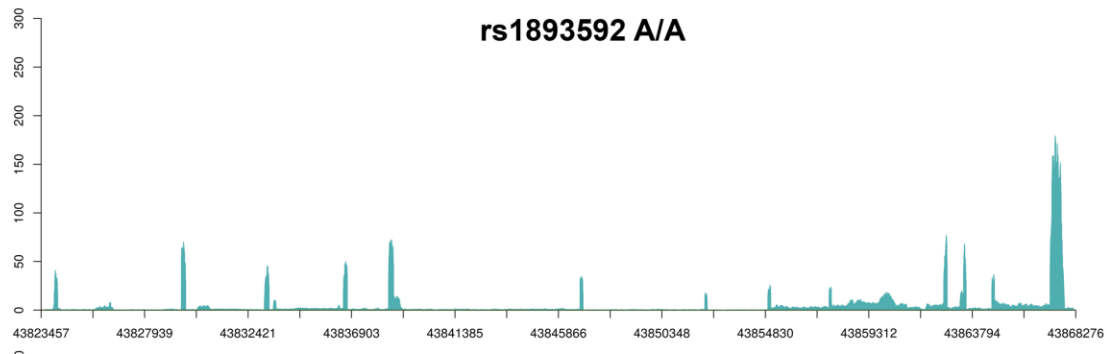


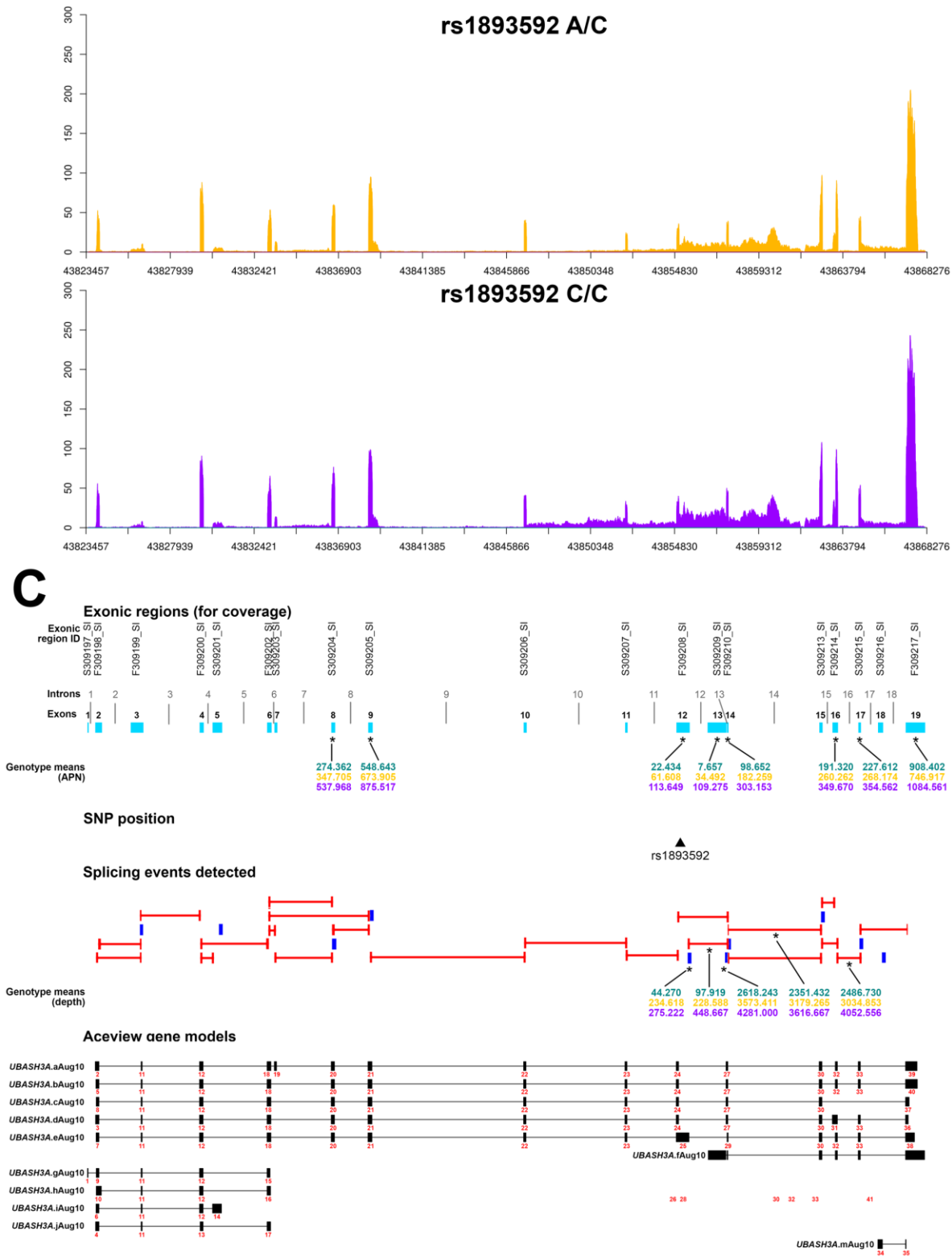
UBASH3A

A



B





Supplemental Figure S5. *UBASH3A* gene expression by rs1893592 genotypes in CD4⁺ T cells. (A) Sequencing coverage across the *UBASH3A* gene (scaled by the maximum depth for the locus) for each individual subject. (B) Summary of the distribution of sequencing coverage across *UBASH3A* for each genotype of rs1893592: A/A (teal), A/C (gold), C/C (purple). (C) Splicing events detected in *UBASH3A* and *UBASH3A* gene models from AceView annotations. Detected junctions are indicated by red bars and detected IR events are indicated by blue blocks. AceView gene models for *UBASH3A* are indicated by black blocks and bars, and cyan

blocks represent the collapsed gene model for *UBASH3A*. Splicing events and exons associated with rs1893592 are denoted by an asterisk (*), and the mean coverage for the A/A (teal), A/C (gold), and C/C (purple) genotypes are noted. Exons used for coverage (cyan blocks in collapsed gene models) are numbered sequentially by start and stop positions 5' to 3' on the + strand.