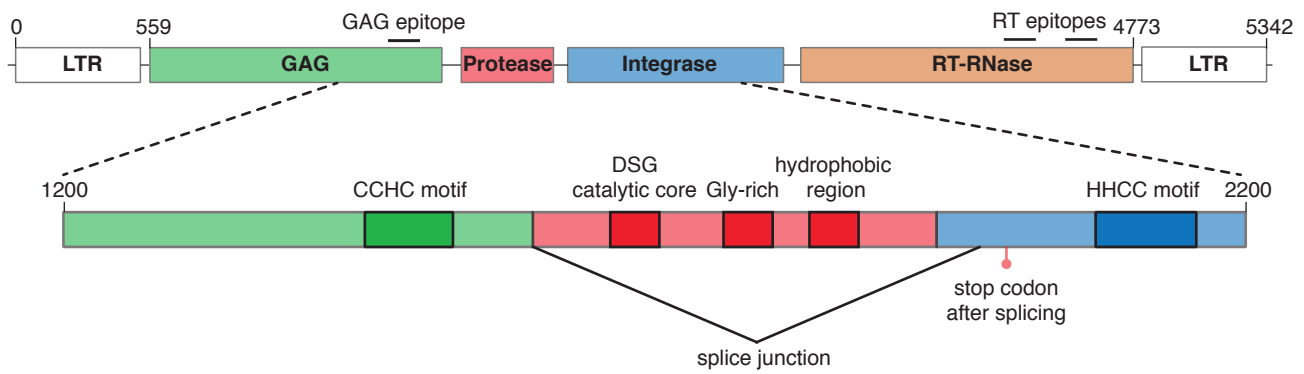
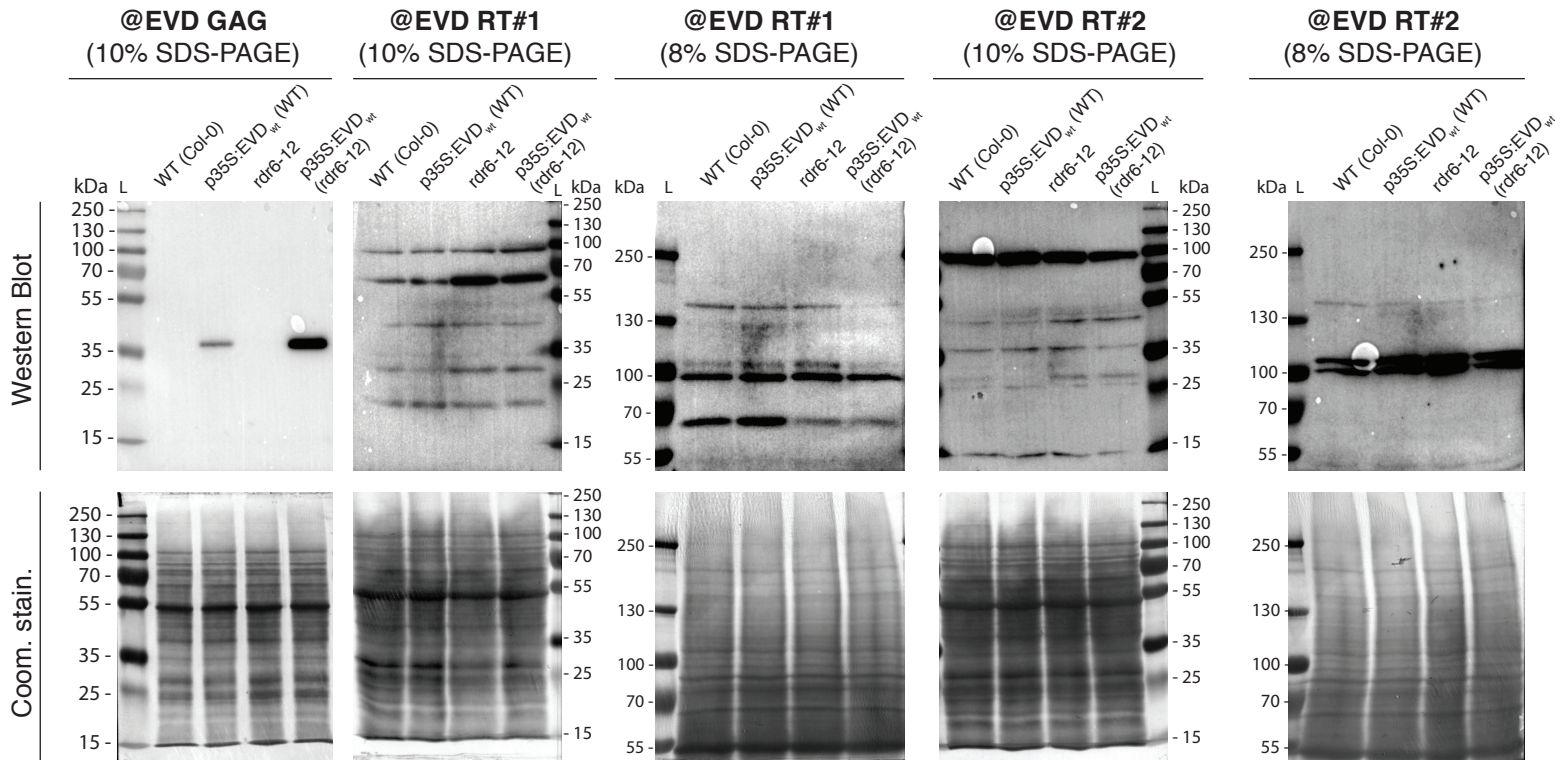


**A****B**

### Supplemental Figure S3. Antibody generation against GAG and RT proteins of *EVD*

(A) Schematic representation of the *EVD* locus with a focus on the conserved domains of the GAG, protease and integrase proteins. GAG protein translated from the spliced isoform differs only marginally (two amino acids) from GAG proteolytically cleaved from the GAG-POL polyprotein, in which cleavage occurs between the conserved GAG CCHC zinc figure and the protease DSG catalytic core motif. GAG and RT epitopes used for antibody generation are depicted as black lines. (B) Western blot of *EVD* overexpression lines testing antibodies against the *EVD* GAG and RT proteins. 35S:*EVD*<sub>wt</sub> as in Fig. 4A-D, expressed and analyzed in inflorescence tissue of both wild type (Col-0) and *rdr6-12* were used for antibody validation. Non-expressing wild-type (Col-0) and *rdr6-12* plants were included as negative controls. (L) protein ladder; (coom. stain.) Coomassie staining for protein loading control.