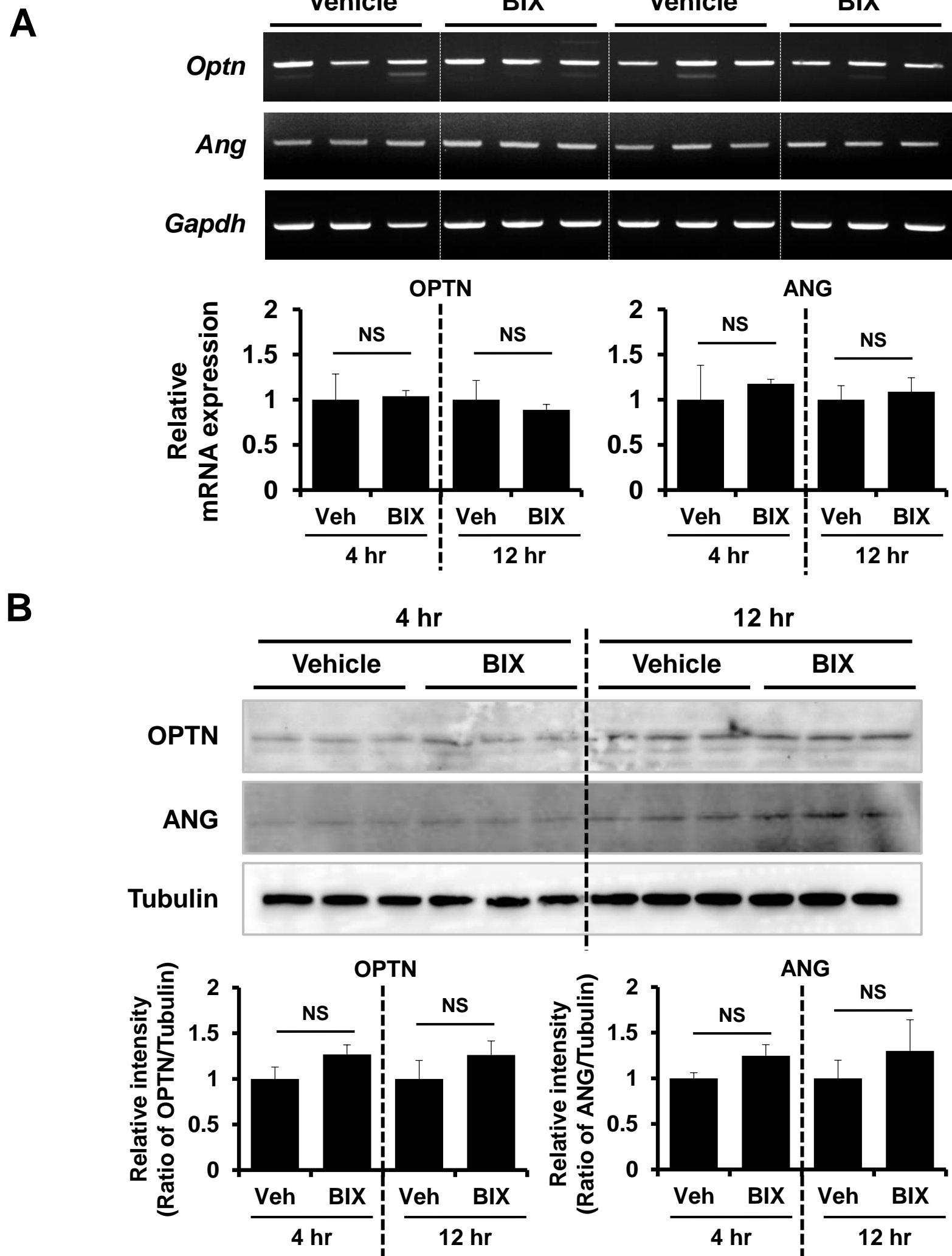


Supplemental Figure 7



Supplemental Figure 7. No significant effects of MAP2K5 inhibition on OPTN or ANG levels. NIH3T3 cells were incubated with vehicle or BIX 02189 (10 μ M) for 4 or 12 hr. The cell lysates were harvested, and the expression levels of OPTN and ANG mRNA (A) or protein (B) were assessed by RT-PCR (A) or western blot analysis (B), respectively. *Gapdh* and Tubulin were detected as a loading control. N.S. indicates no statistically significant difference (n=3).