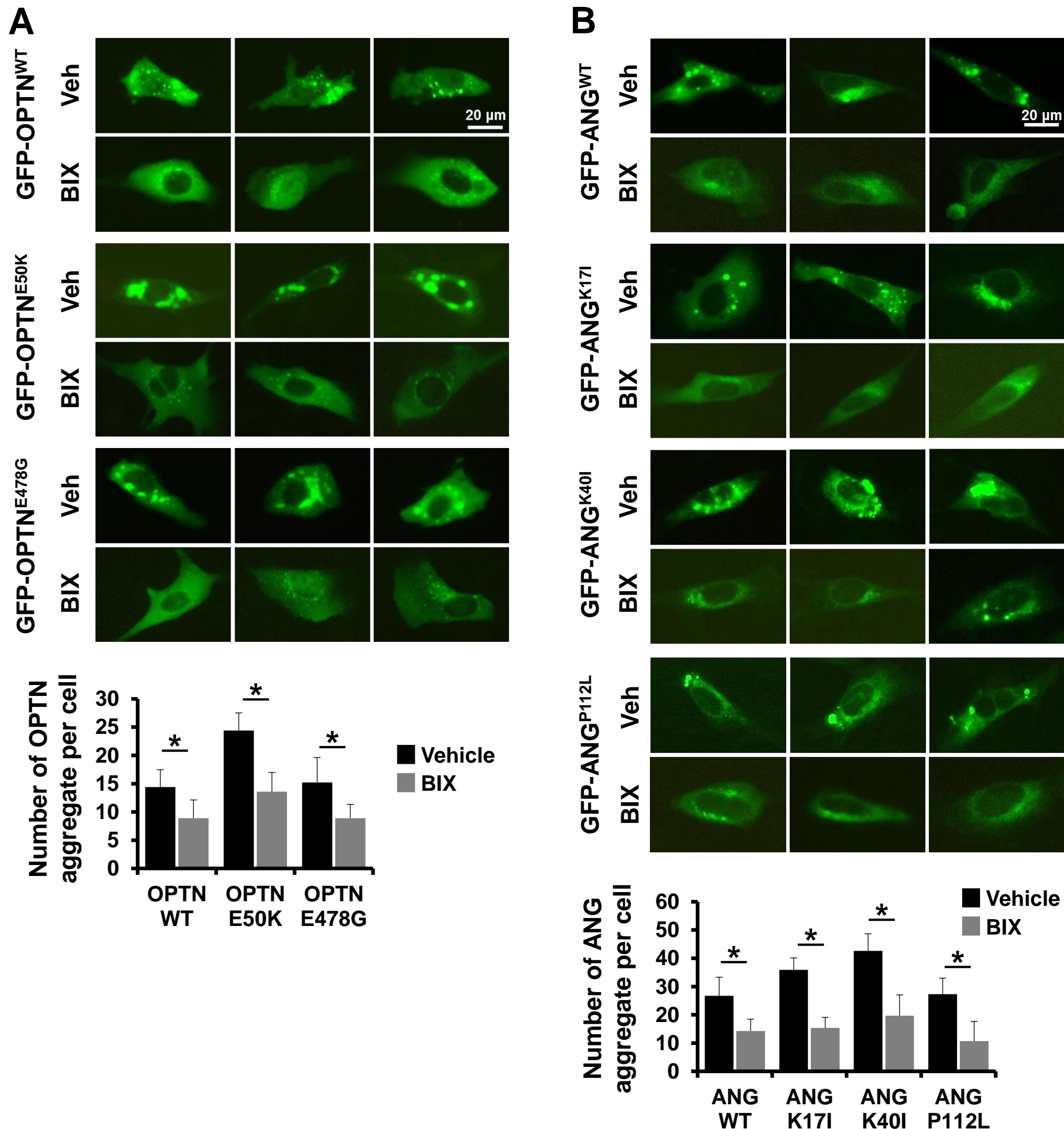


Supplemental Figure 5



Supplemental Figure 5. Microscopy images of OPTN and ANG protein aggregates in mammalian cells. NIH3T3 cells were transiently transfected with wild-type GFP-OPTN or GFP-OPTN mutants (E50K or E478G) (A) and wild-type GFP-ANG or GFP-ANG mutants (K17I, K40I, or P112L) (B). After 36 hr of transient transfection, cells were incubated with vehicle (veh) or 10 μ M BIX 02189 for 12 hr. Protein aggregates were visualized using fluorescence microscopy and quantified (*lower*). Protein aggregates (puncta ($>1 \mu$ m)/cell) were counted using ImageJ software (Analyze particles). Results were obtained from at least 10 cells per group. Scale bar, 20 μ m. * $p < 0.05$ between the indicated groups; mean \pm SD.