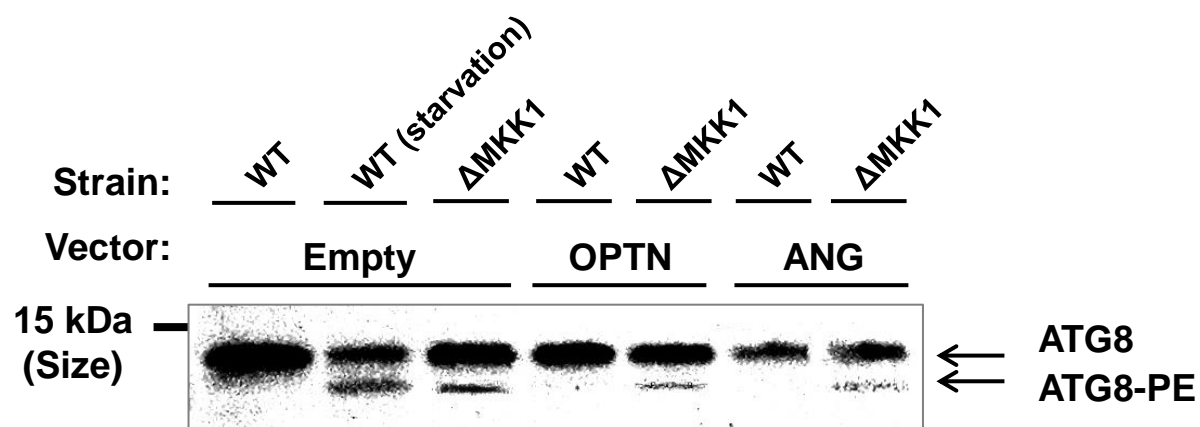


Supplemental Figure 15



Supplemental Figure 15. MAP2K5 deletion enhances autophagy in yeast. Wild-type yeast strain (BY4742) or MAP2K5 deletion strain (Δ MKK1) was transformed with OPTN or ANG constructs, and then grown to a OD_{600} of 1 in SGal-Leu medium and harvested. For starvation, yeast cells were incubated in SD-N medium for 6 hr. ATG8 lipidation were detected by western blot analysis using an antibody against ATG8. ATG8-PE (phosphatidylethanolamine) was separated from ATG8 by 13.5% SDS PAGE gels containing 6 M urea.