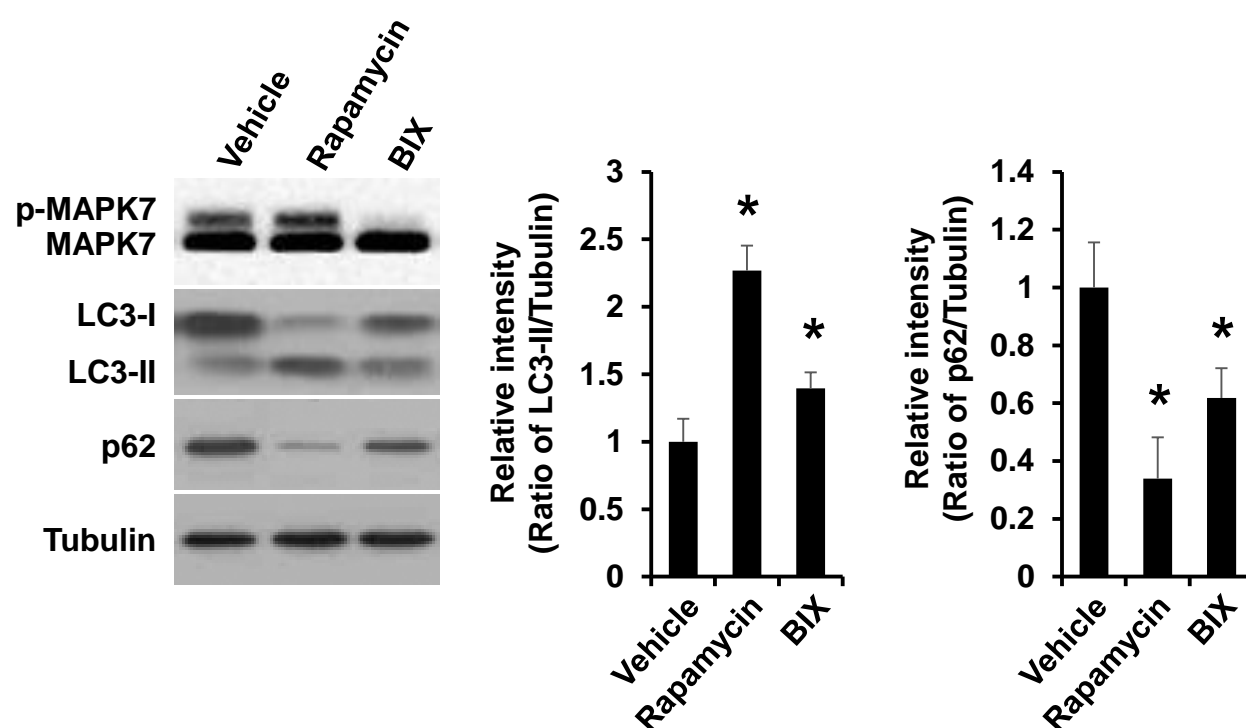


# Supplemental Figure 14



**Supplemental Figure 14. Inhibition of MAP2K5 enhances autophagy in motoneuron-like cells.** Differentiated NSC-34 mouse motoneuron-like cells were treated for 4 hr with 10  $\mu$ M of BIX 02189 or 200 nM of rapamycin, an autophagy inducer. Protein lysates were subjected to western blot analysis with MAPK7, LC3, and p62 antibodies. Tubulin was detected as a loading control. The results of densitometric analysis (*right*) are presented as the mean  $\pm$  SD ( $n = 3$ ); \* $p < 0.05$  versus vehicle treatment.