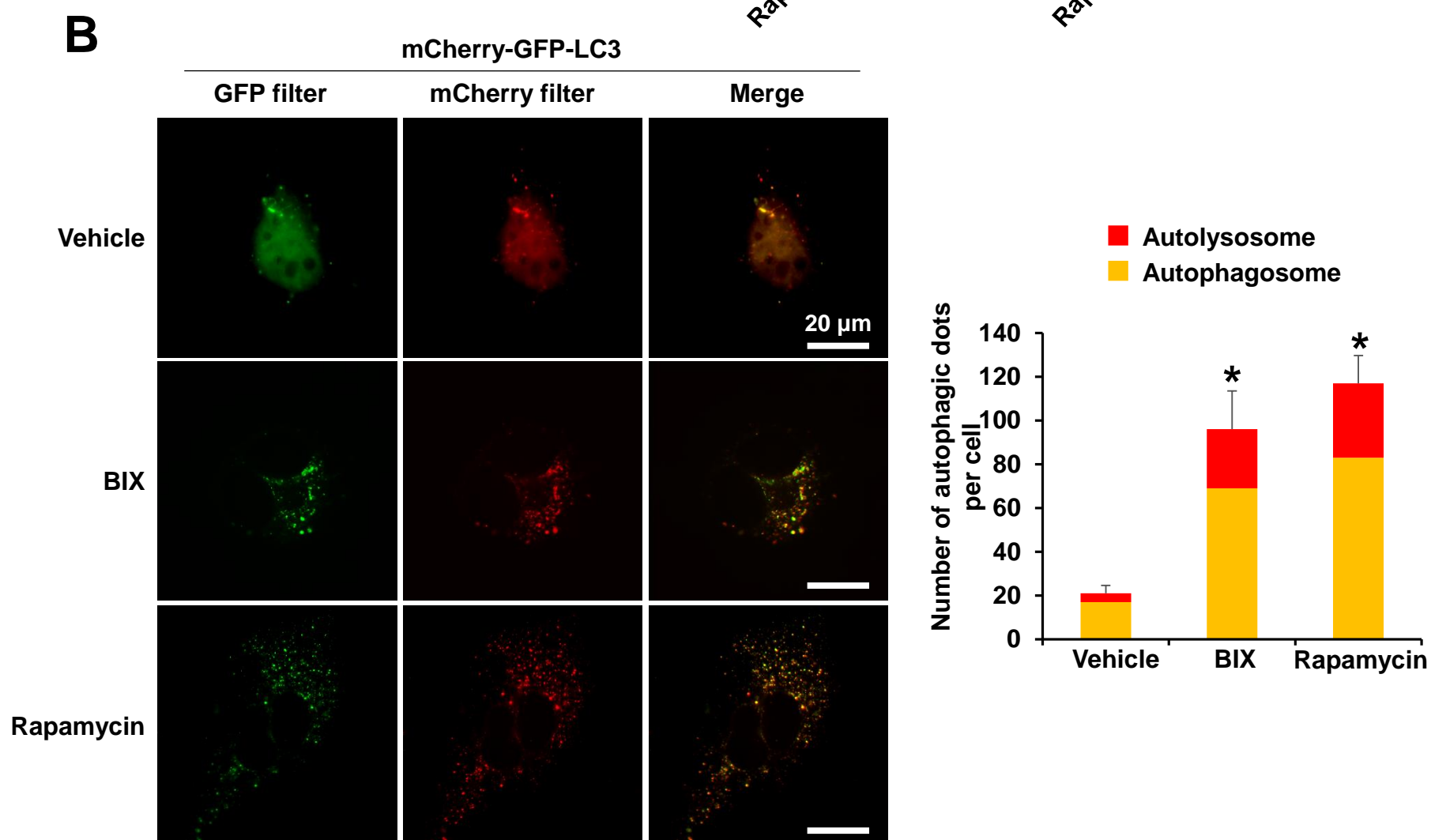
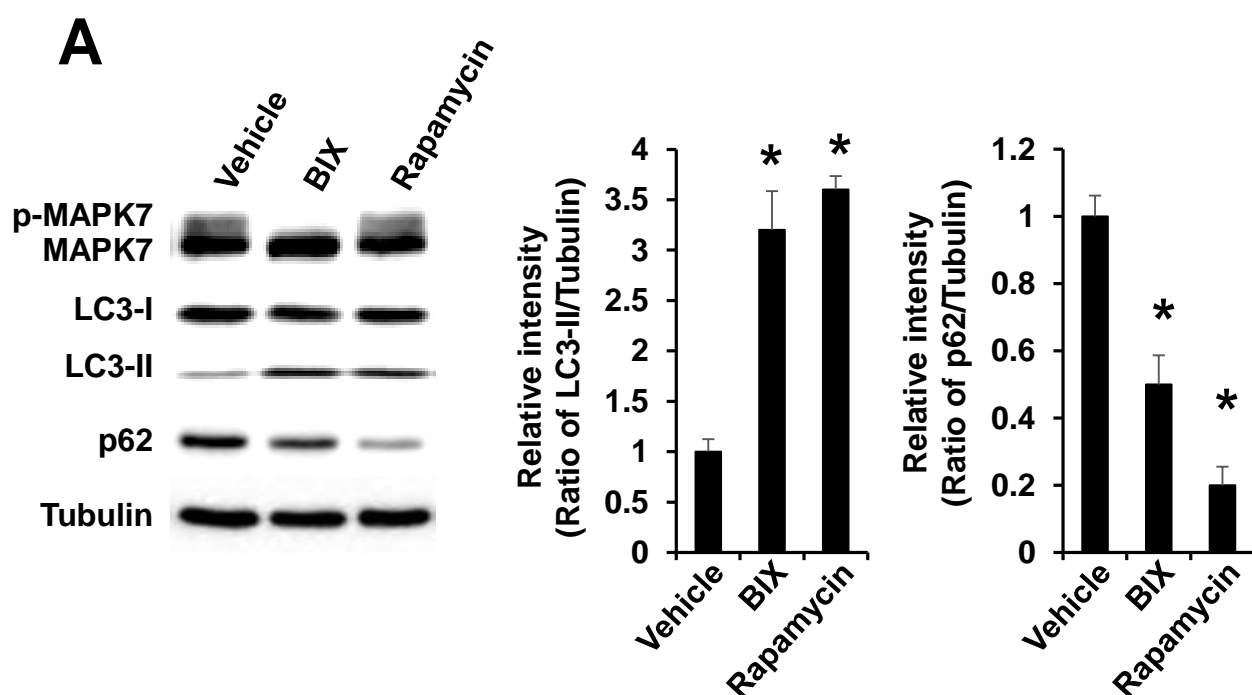


Supplemental Figure 13



Supplemental Figure 13. Inhibition of MAP2K5 enhances autophagy. (A) NIH3T3 cells were treated for 4 hr with 10 μ M of BIX 02189 or 200 nM of rapamycin, an autophagy inducer. Protein lysates were subjected to western blot analysis with MAPK7, LC3, and p62 antibodies. Tubulin was detected as a loading control. The results of densitometric analysis (*right*) are presented as the mean \pm SD ($n = 3$); * $p < 0.05$ versus vehicle treatment. (B) NIH3T3 cells plated on coverslips were transfected with mCherry-GFP-LC3. After 48 hr of transfection, cells were treated with 10 μ M of BIX 02189 or 200 nM of rapamycin for 4 hr. Images show representative fields with autophagosomes (yellow) and autolysosomes (red) (*left*). Scale bar, 20 μ m. The graph shows the number of autophagosomes (yellow bar) and autolysosomes (red bar) per cell in the merged images (*right*). Thirty cells were examined from three independent experiments. * $p < 0.05$ versus vehicle.