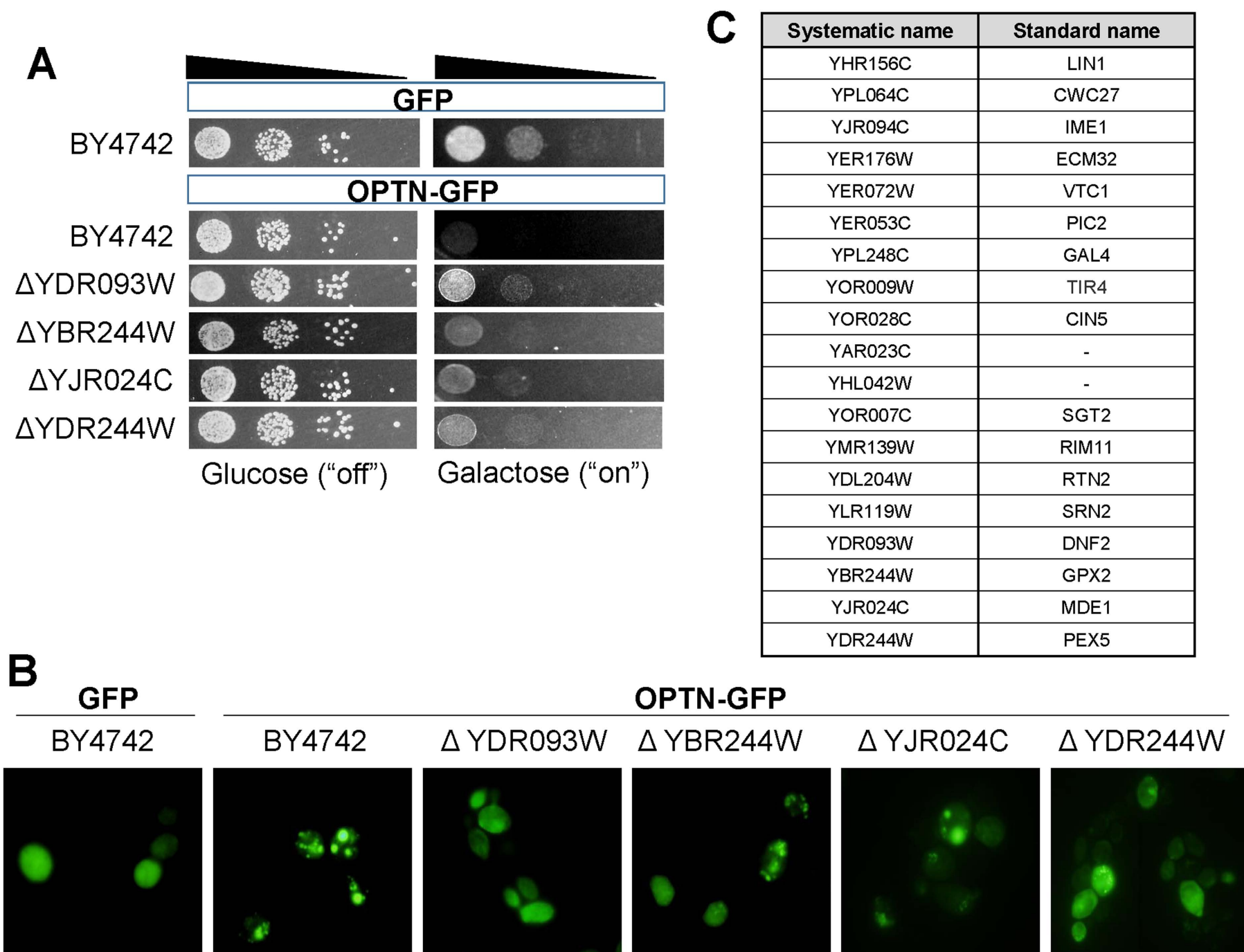


Supplemental Figure 1



Supplemental Figure 1. Evaluation of yeast toxicity and protein aggregate formation after expression of GFP-fused OPTN. GFP-tagged OPTN induced yeast toxicity (A) and aggregate formation (B) in several yeast deletion strains in a manner similar to that of untagged OPTN protein. Systematic and standard names of the yeast deletion used here and Figure 3 are listed (C).