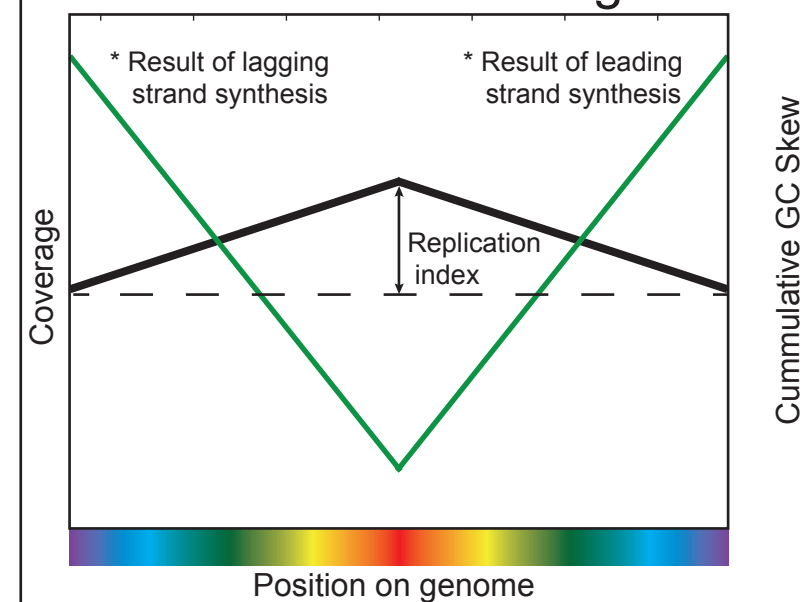
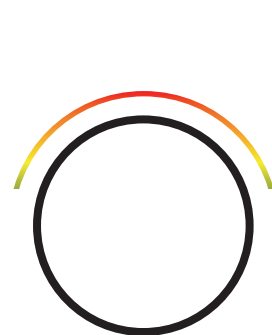
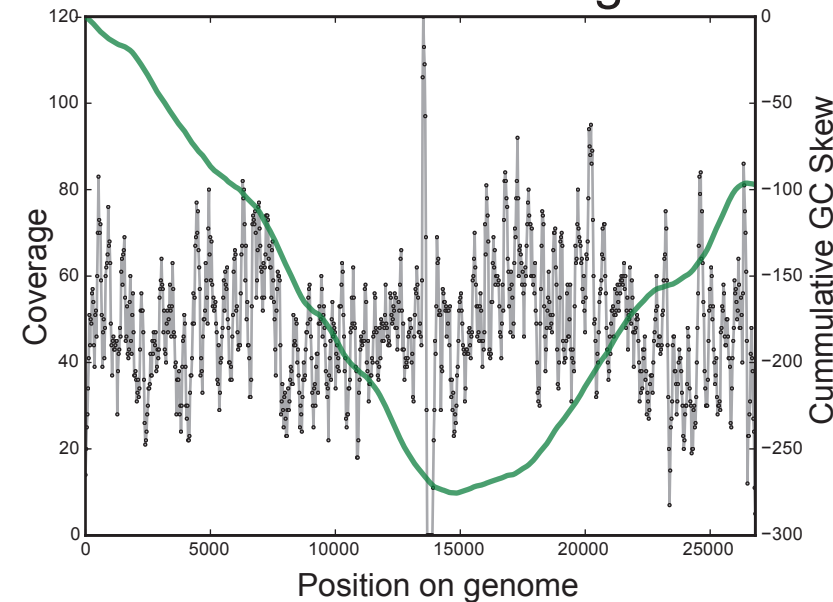


A

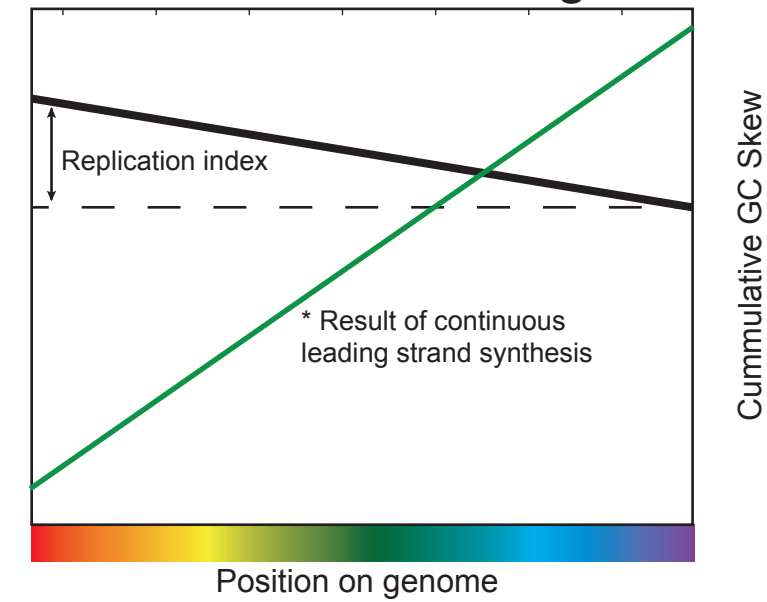
Theoretical theta replication GC skew / coverage



S. epidermidis plasmid A GC skew / coverage

**B**

Theoretical rolling circle GC skew / coverage



S. mitis phage A GC skew / coverage

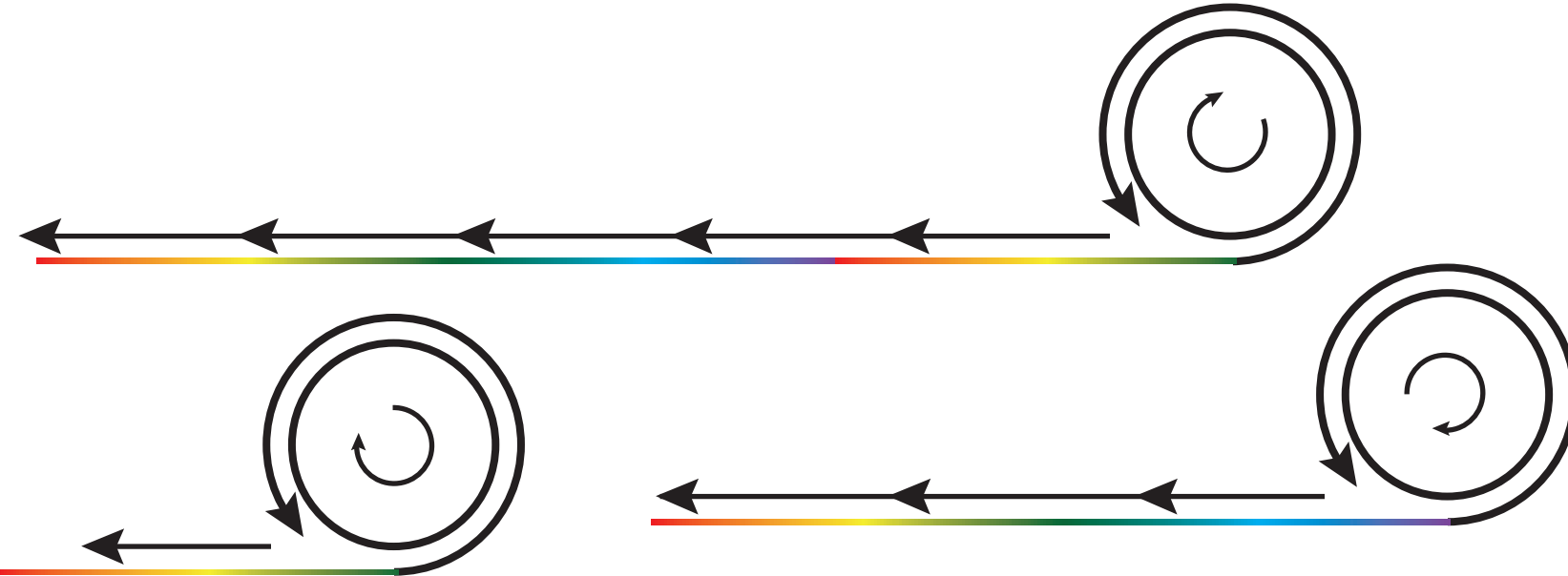
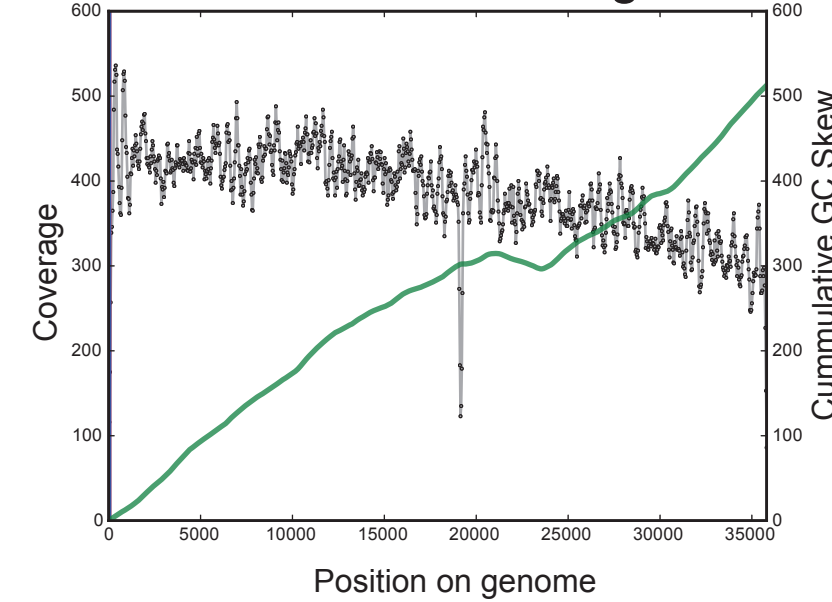


Figure S3 Cumulative GC Skew and coverage profiles of assembled circular pieces of DNA may be indicative of replication style. For both rolling circle replication (A) and theta replication (B), a schematic of the replication style is shown (bottom). Theoretical cumulative GC skew and coverage plots are illustrated (left) based on interpretation of the schematics, and are compared to actual cumulative GC skew and coverage plots of assembled pieces of circular DNA (right).