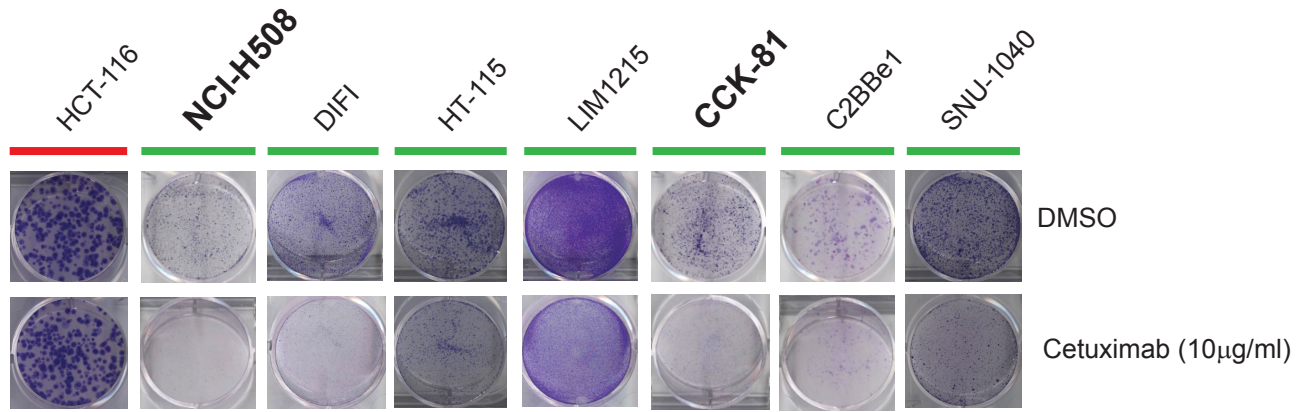
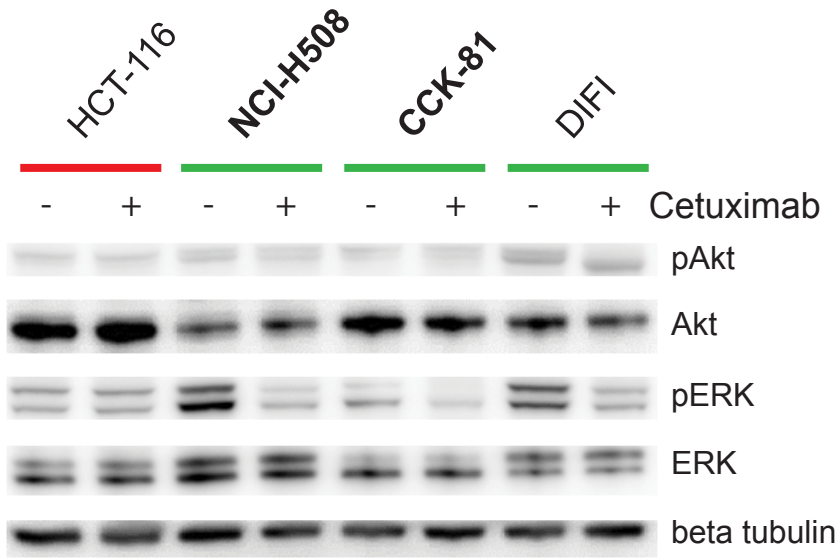


# Supplemental Figure S1

A



B



**Supp Figure S1.** (A) Clonogenic survival assays of 8 KRAS/NRAS/BRAF wild-type colorectal cell lines together with a KRAS G13D mutant line (HCT116) treated with 10 µg/ml Cetuximab and assayed at 21 days. Plates were stained with Giemsa. (B) Effect of Cetuximab treatment at 6 hours on MAPK and PI3K signalling in Cetuximab sensitive (green bar) versus resistant (red bar) colorectal cell lines. Beta tubulin is used as a loading control.