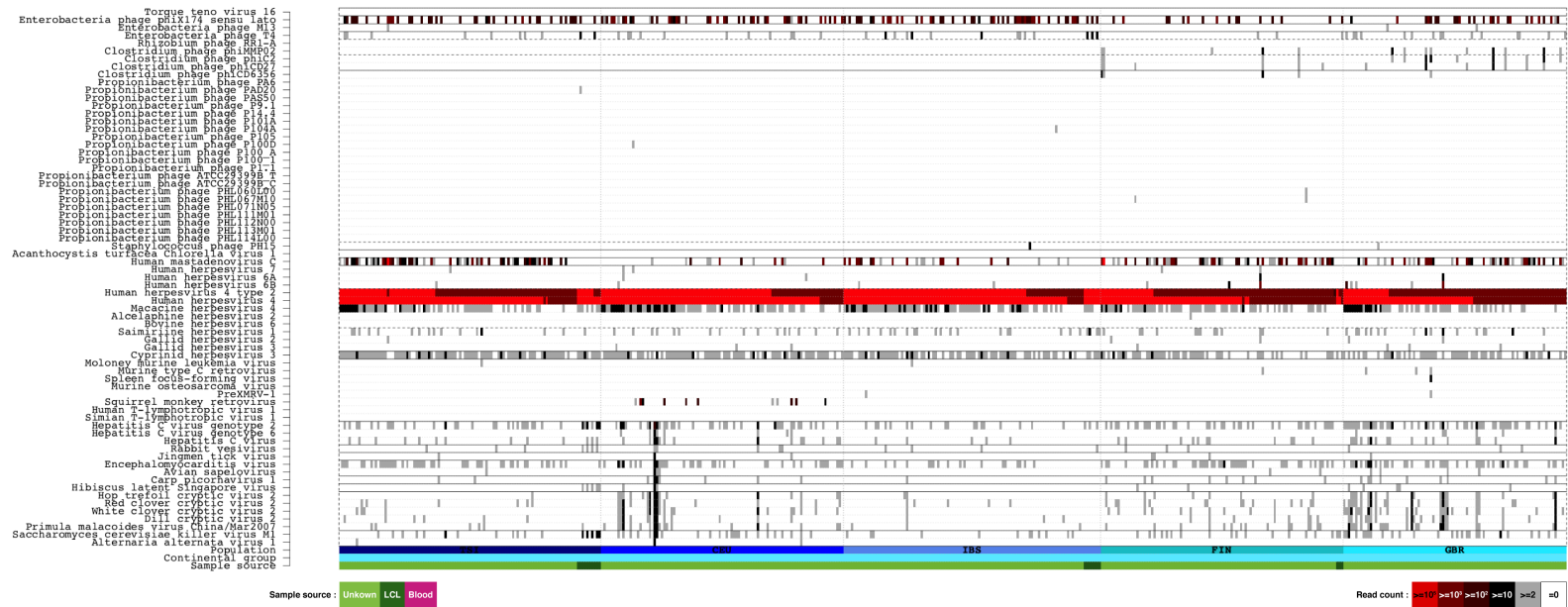


# Virus signal in EUR continental group



**Supplemental Fig 3.** Viral sequences found in the 1000GP population BWT (EUR continental group). Individuals are represented on the x-axis. Only virus taxa with greater than 10 reads (black bars) in at least one sample are shown. Samples are ordered by population, source (blood: pink, LCL: dark green, unknown: light green), and total virus load (sum of read counts per virus and sample).