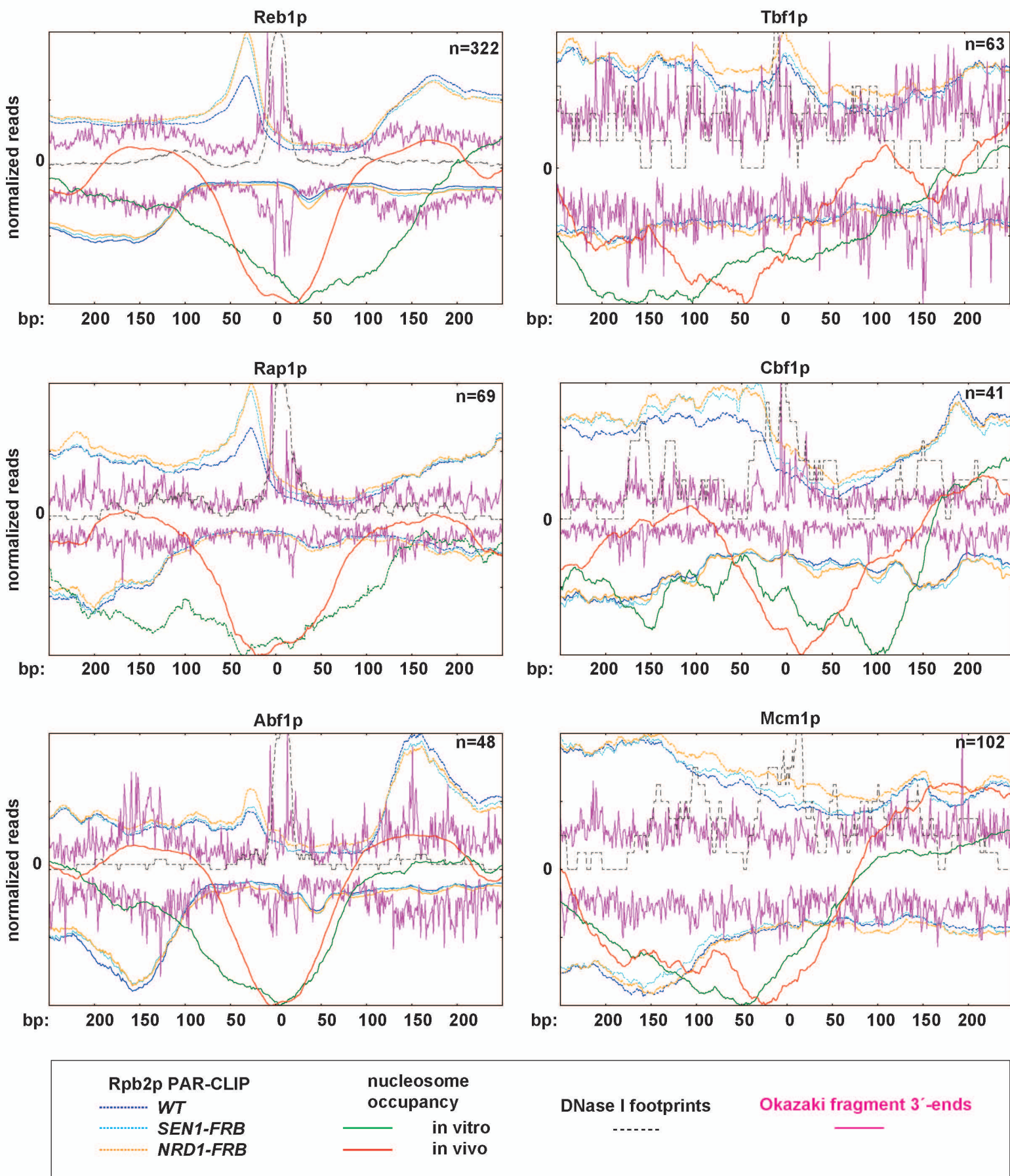


Roy_et_al_Supplemental_Fig.S9



Supplemental Figure S9. Meta-site analysis for Pol II occupancy and Okazaki fragment roadblocks for the general regulatory factors (GRFs) and non-GRF DNA-binding proteins, Related to Figure 5

Meta-site analysis for GRFs (left side) and non-GRF DNA-binding proteins (right side) from **Supplemental Fig. S7**. The number of binding sites analyzed for each panel is indicated in the upper right. Pol II occupancy data is shown as solid lines for WT (blue), *NRD1-FRB* (orange), and *SEN1-FRB* (cyan), and represents previously published Rpb2 PAR-CLIP strand-specific data (Schaughency et al. 2014). Signal from DNase I resistant regions are shown as a black line. The 3'-ends of Okazaki fragments accumulating after inactivation of DNA ligase I (*CDC9*) represent the progression of DNA polymerase δ (red lines). The signal above the zero line represents the sense strand with respect to the direction of roadblock or readthrough, respectively, while the signal from the opposite strand is plotted below the zero line. Nucleosome occupancy is shown in green (*in vitro*) and red (*in vivo*) (Kaplan et al. 2009).