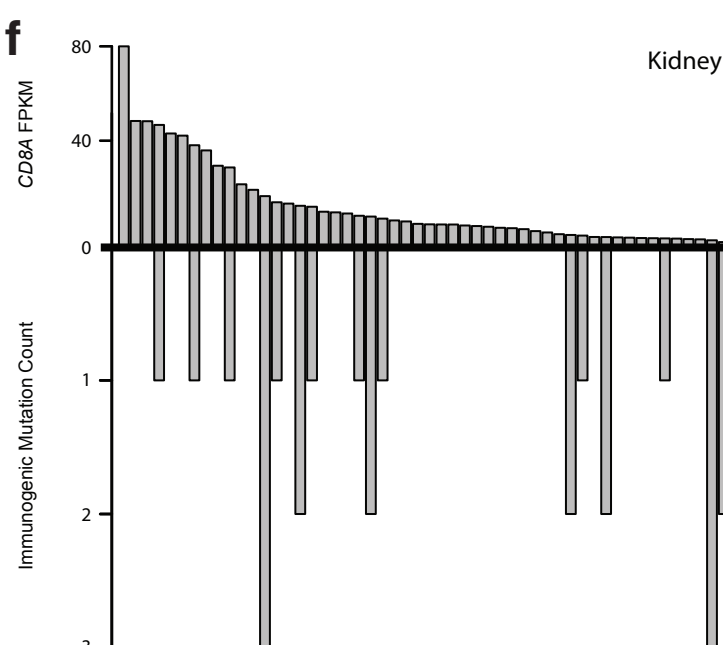
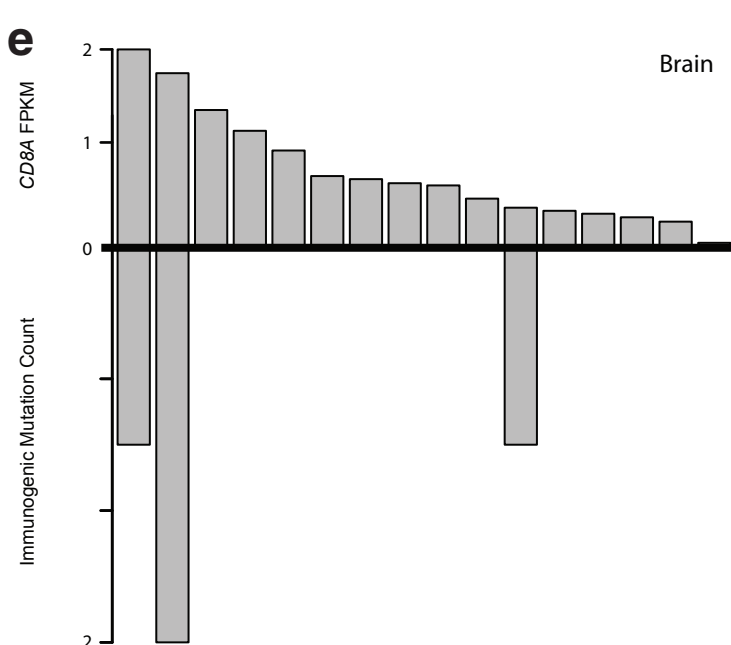
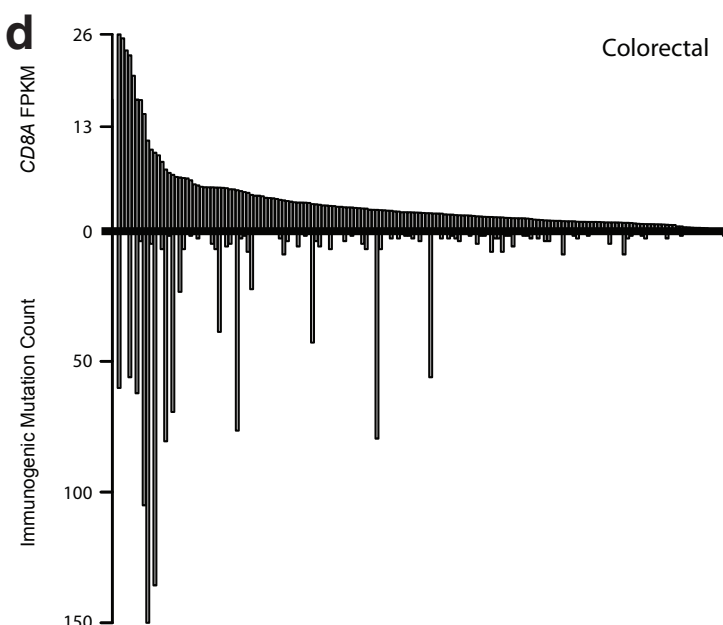
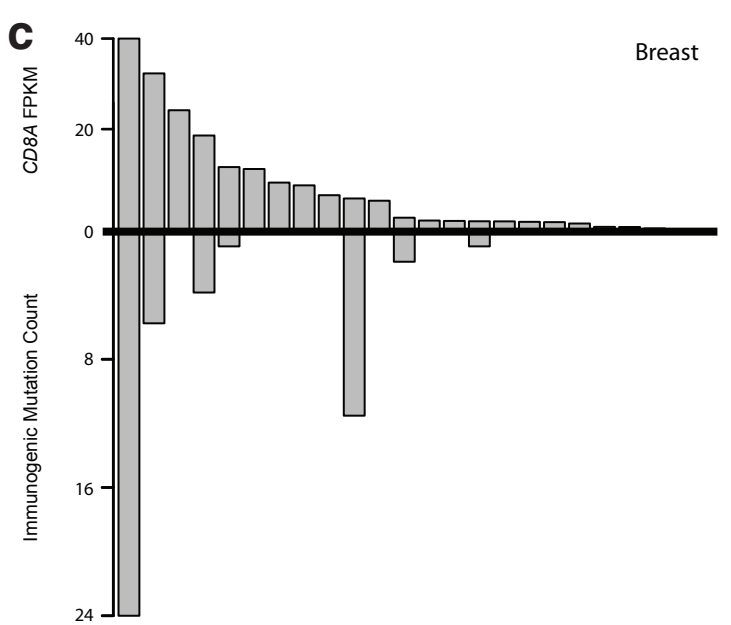
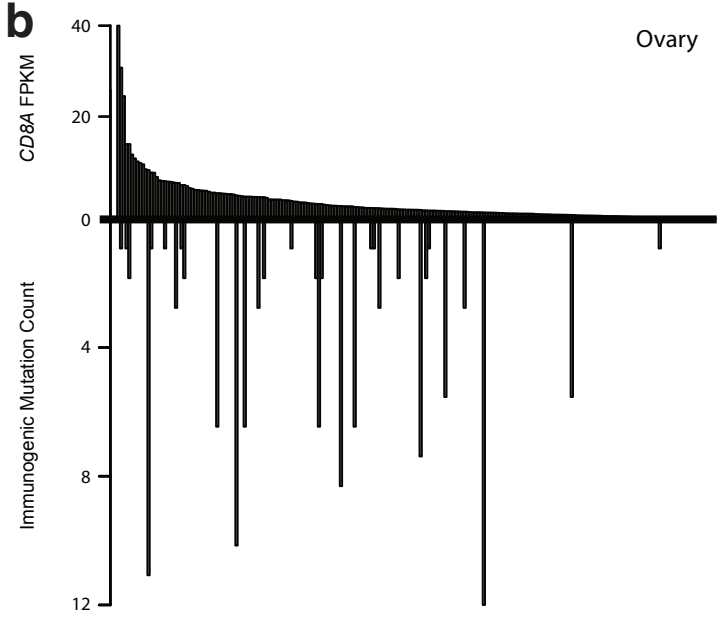
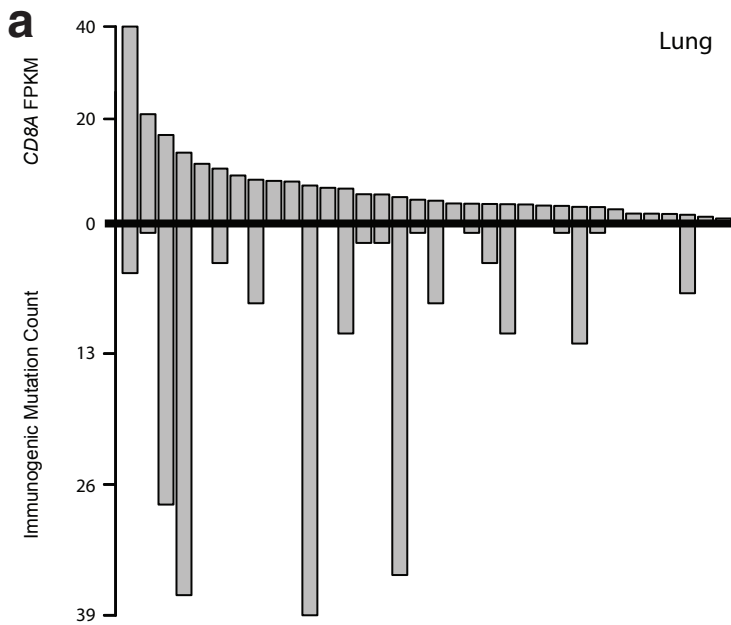


Supplementary Figure 1 Skew plot of *CD4* expression and predicted immunogenic mutations. Patients were ordered along the x-axis according to their *CD4* expression. Each patient's *CD4* expression was plotted above the x-axis, and count of predicted immunogenic mutations below. No significant skew was observed ($P = 6.9 \times 10^{-1}$).



Supplementary Figure 2 Skew plots for each cancer type individually. Patients were ordered along the x-axis according to their *CD8A* expression. Each patient's *CD8A* expression was plotted above the x-axis, and count of predicted immunogenic mutations below for **(a)** lung ($P = 2.6 \times 10^{-2}$), **(b)** ovary ($P = 4.8 \times 10^{-2}$), **(c)** breast ($P = 1.9 \times 10^{-2}$), **(d)** colorectal ($P = 1.0 \times 10^{-4}$), **(e)** brain ($P = 2.7 \times 10^{-1}$) and **(f)** kidney ($P = 2.9 \times 10^{-1}$).