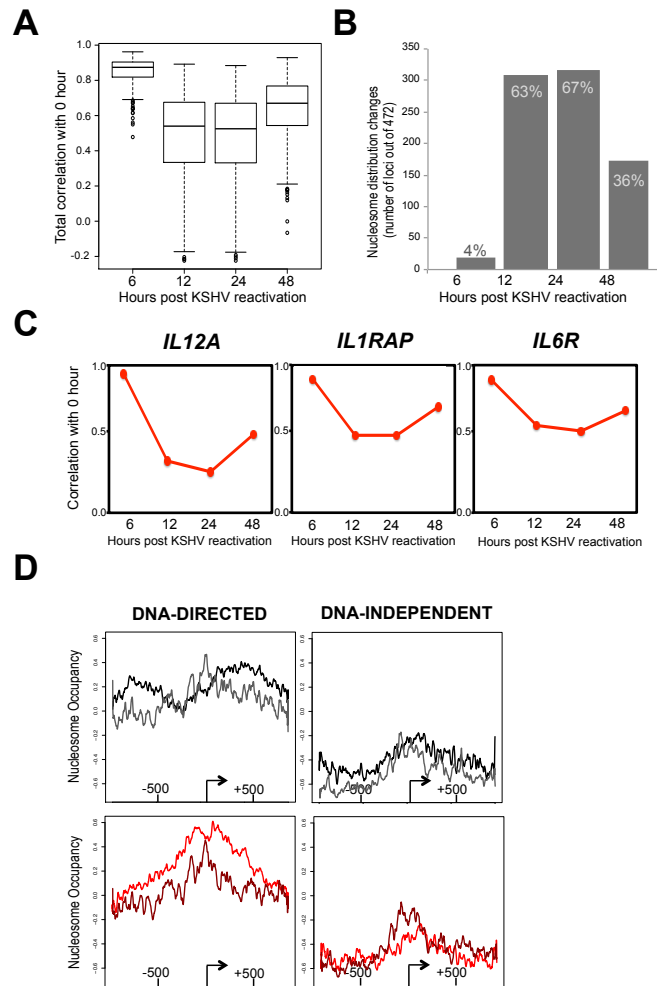


# Sexton et al. \_ Supplementary Figure 19



Supp. Fig. 19. Reactivation of KSHV resulted in widespread, transient nucleosome redistribution in the biological replicate. (A) Boxplot of the correlation values for the 472 loci nucleosome distributions between the 0 hours timepoint and the timepoints following KSHV reactivation. (B) Number of loci with nucleosome distribution changes ( $r < 0.7$ ) at 6, 12, 24, and 48 hours post reactivation of KSHV. The greatest number of nucleosome distribution changes occurred at the 24 hours, and the nucleosome redistributions transiently return to the basal state nucleosome distribution (0 hours) at the 48 hours. (C) The correlation values between the nucleosome distributions of the 0 hours and post KSHV reactivation timepoints for the *IL12A*, *IL1RAP*, and *IL6R* TSSs. (D) Average values for all genes identified as DNA directed (left column), DNA independent (second column), and no change (third column), calculated by alignment of loci to the TSS for each of: 0 hours (black), 24 hours (red), biological replicate 0 hours (gray), and biological replicate 24 hours (dark red).