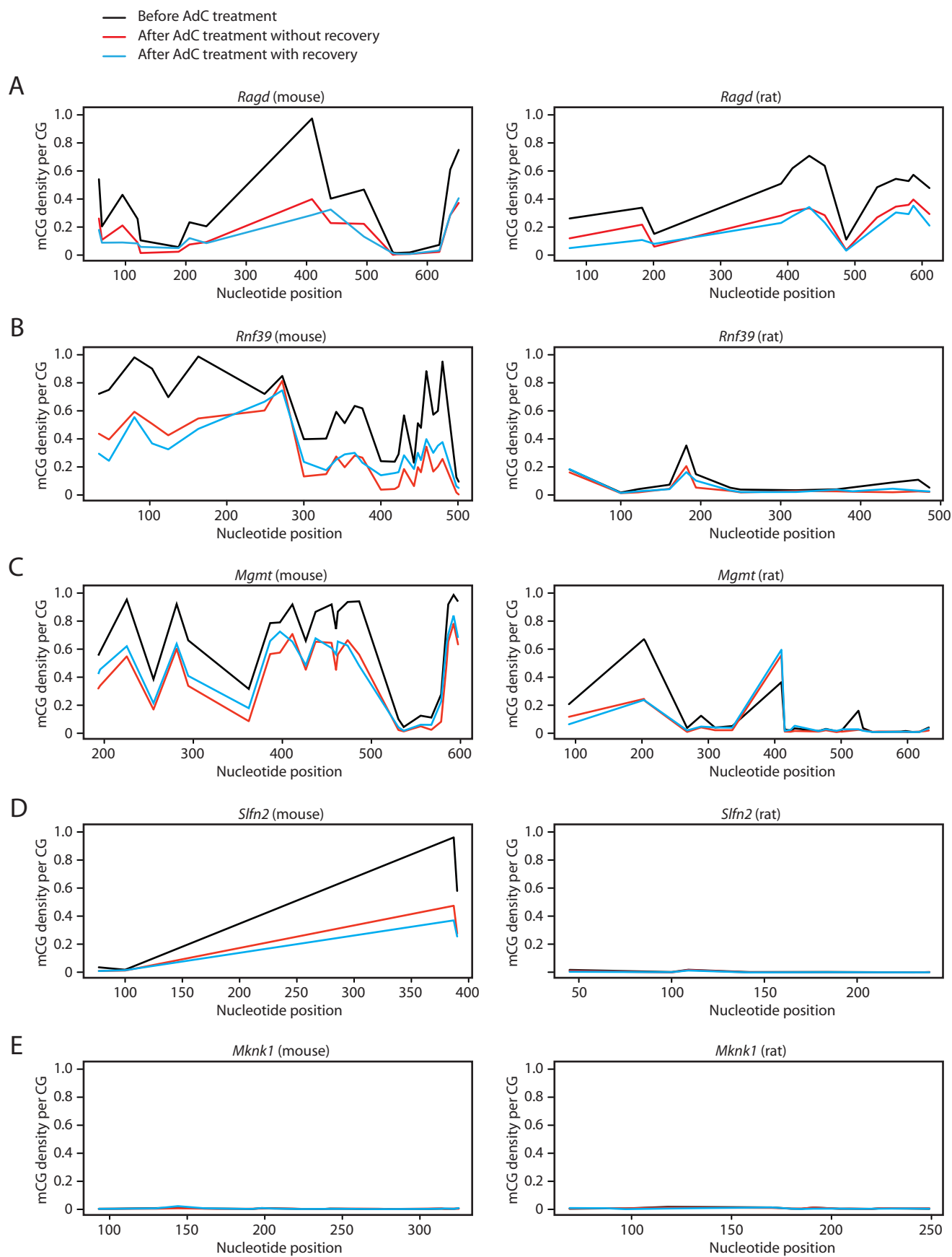


Figure S8



**Figure S8.** Effect of AdC treatment on promoter methylation for five representative genes in 129TFxR1A(clone1). Methylation was assessed using bisulfite treatment of genomic DNA followed by PCR to interrogate specific regions and further followed by high-throughput sequencing of PCR products (see Methods). Three classes of genes are represented, including occluded genes not activated by AdC (A, B), occluded genes activated by AdC (C, D), and activatable genes (E). In each panel, methylation profile for the mouse ortholog is shown on the left and rat on the right. Generally, AdC treatment reduced methylation levels, which persisted even after treated cells were allowed to recover in the absence of AdC. Note that the rat orthologs of these genes remained active in all the samples.