

Fig. S2 Bisulfite sequencing of the M17C fragment

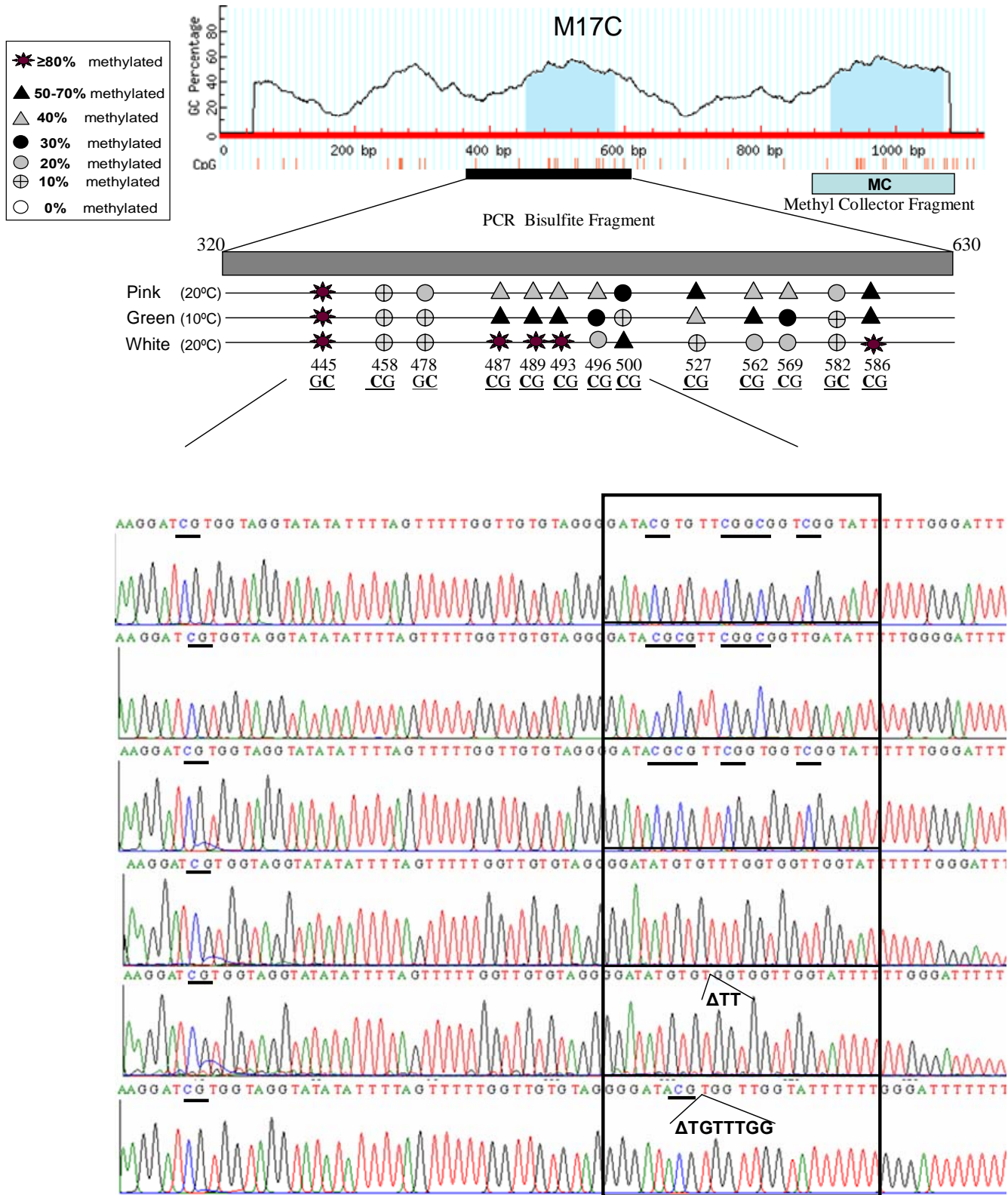


Figure S2. Bisulfite sequencing of the extended region of the affinity precipitated M17C fragment gi|171824612: 8609-8756 Contig21050. Prediction of the CpG Island and primers designed for the bisulfite sequencing was performed by the MethPrimer program <http://www.urogene.org/methprimer/index1.html>. Quantification of the methylation percentage was calculated by direct bisulfite sequencing of 20 independent clones.