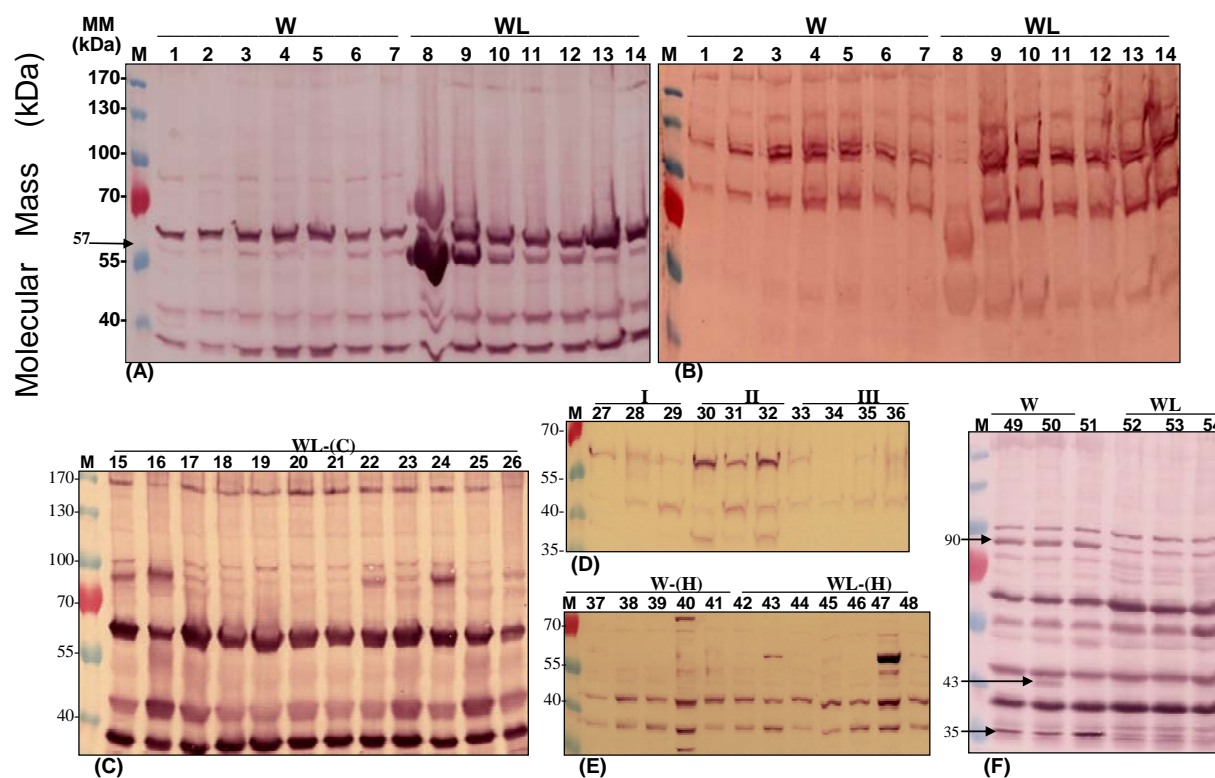


**Fig. S1. Comparison of ERK 1&2 immunoreactive molecules in individual *A. pisum* morphs**



**Figure S1.**

(A-F), proteins were separated by SDS-PAGE (12% gels) and immunoblotted against an ERK1&2 MAP-K antibody. (W)/(WL), winged/wingless aphids. In (C), WL-(C), represents a sub-clone of a wingless aphid (synchronized sisters derived from a descendant of the founder). In (E), W-(H) / WL-(H) indicates dissected aphid heads. In (D), I, II, III represent different female aphids used for newly born progeny comparisons. Each individual was collected immediately after birth and kept at -20°C before use. (B), represents the pattern of diphosphorylated ERK1&2 in the gel shown in (A).