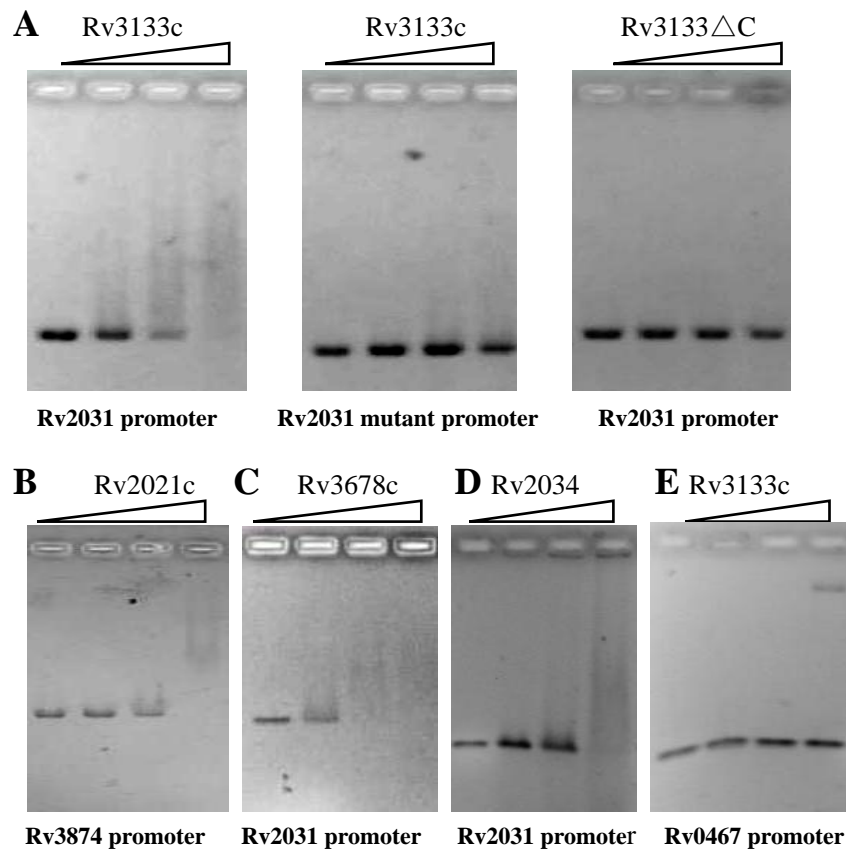


**Figure 5**



**Gel retardation analysis of the bindings of regulators to promoters.** The bindings of partial regulators to the promoters were also performed using a modification of an electrophoretic mobility shift assay described previously (Chen et al. 2008). The binding buffer contained 10 mM Tris-Cl (pH 8.0), 50 mM KCl, 5% Glycerol, 50 mg/mL BSA, 0.01% bromphenol blue. The reaction mixture was incubated on ice for 30 min and loaded onto a 1.5% agarose gel in  $0.5 \times$  TBE buffer. Electrophoresis was performed at 80 V for 2-3 hours. **A**, Rv3133c and Rv3133 $\Delta$ C (0, 0.15, 0.3, 0.45  $\mu$  M). **B**, Rv2021c (0, 0.5, 1.0, 1.5  $\mu$  M). **C**, Rv3678c (0, 1.0, 2.0, 3.0  $\mu$  M). **D**, Rv2034 (0, 0.4, 0.8, 1.2  $\mu$  M). **E**, Rv3133c (0, 0.15, 0.3, 0.45  $\mu$  M).