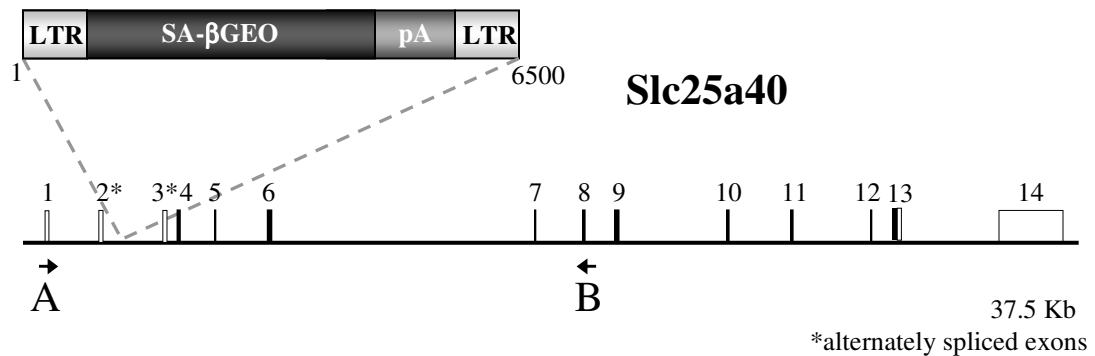
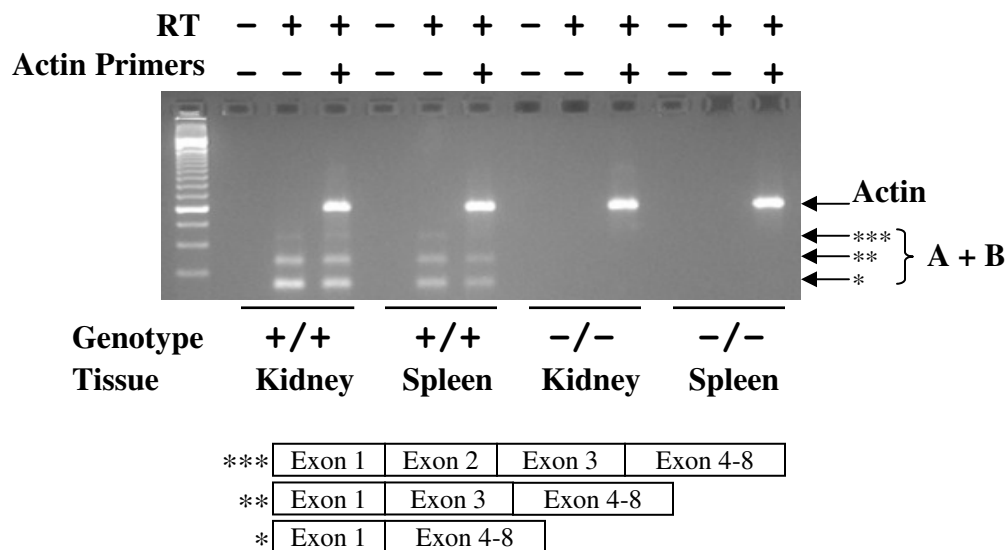


A)



B)



Supplemental Figure 6. Transcriptional disruption of the *Slc25a40* gene. A) *Slc25a40*-deficient mice were generated from OmniBankII ES cell clone IST10006D1 which contains a gene trapping vector insertion in the second intron of *Slc25a40* (accession NM_178766). LTR, long terminal repeat; SA, splice acceptor sequence; bGEO translational fusion of the beta galactosidase gene and the neomycin phosphotransferase gene; pA polyadenylation sequence. Open boxes represent noncoding exons, filled boxes represent coding exons. B) RT-PCR analysis of the *Slc25a40* transcript using primers (A and B) complementary to the first and eighth exons of the *Slc25a40* gene. Three endogenous *Slc25a40* transcripts were detected in the kidney and spleen of wild-type (+/+) mice. No transcripts were detected in homozygous (-/-) tissues.