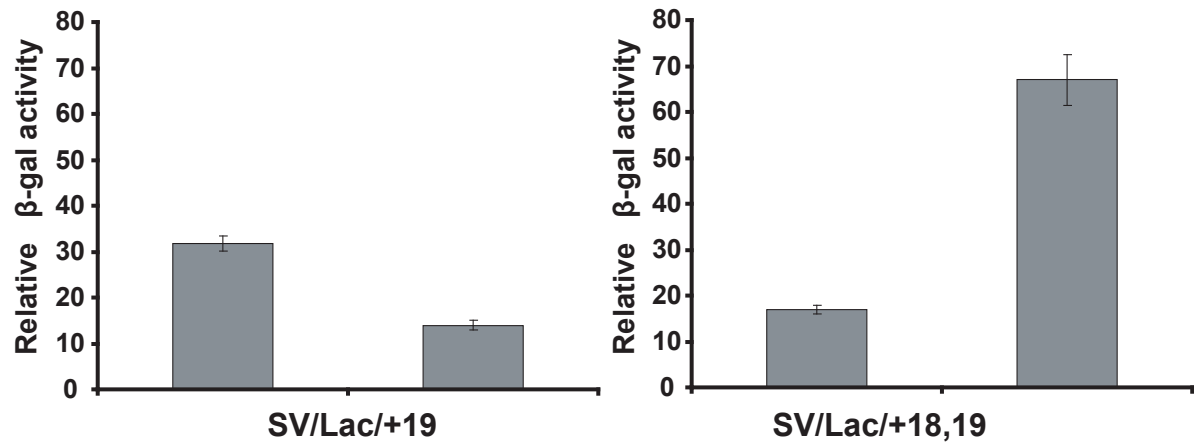


**A**

Smith et al, Supp Fig 3

**Supplementary Figure 3:** A) ES cells expressing SV/Lac, SV/Lac/+19 and SV/Lac/+18,+19 were differentiated towards the haematopoietic lineage. LacZ activity was assessed by colorimetric assay using the synthetic  $\beta$ -galactosidase substrate ONPG at days 3 and 8 of differentiation. Experiments were performed in triplicate and data is presented as mean LacZ activity per  $1 \times 10^6$  cells plotted relative to the SV/Lac control.