

Figure S1.1

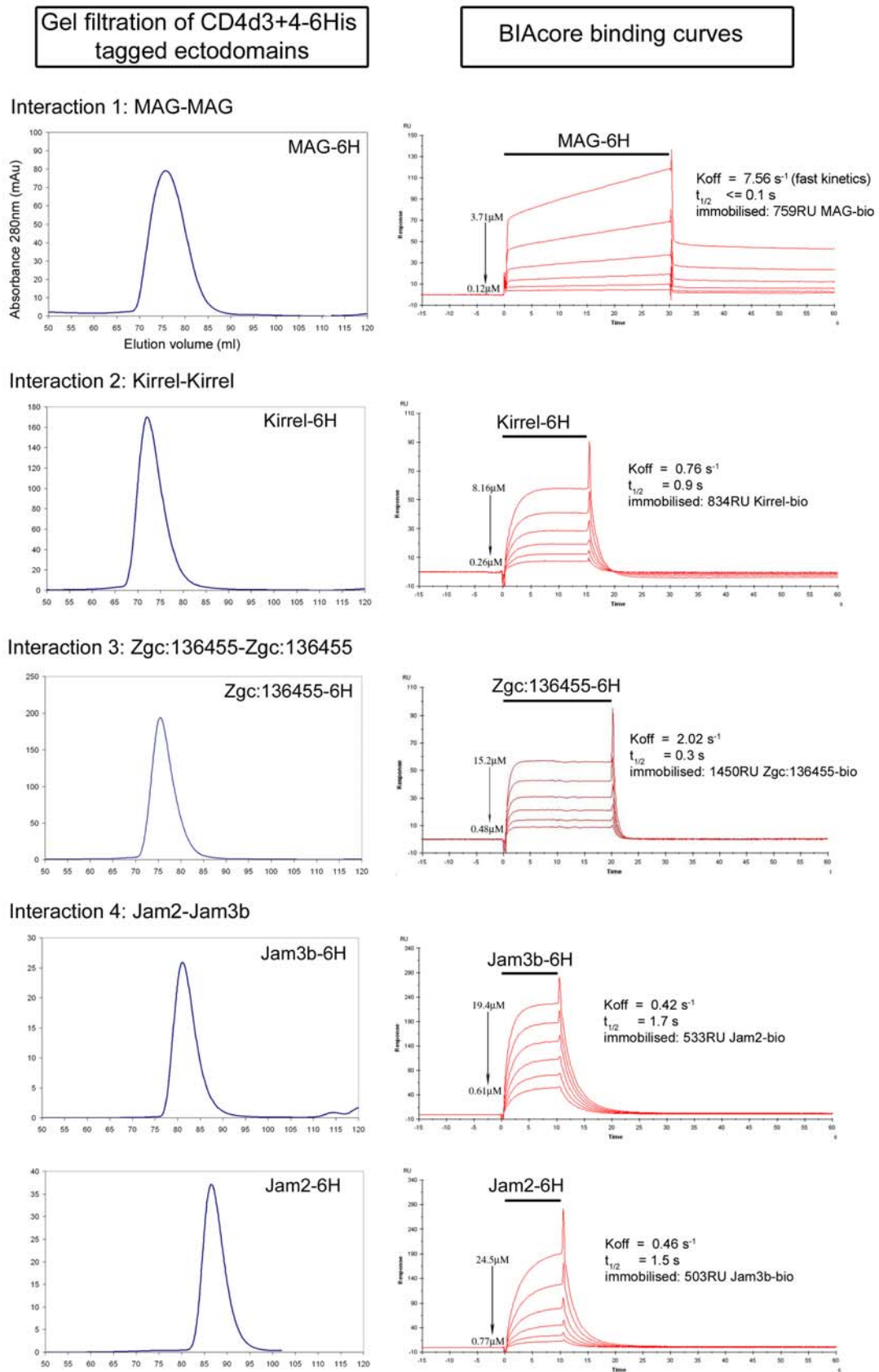
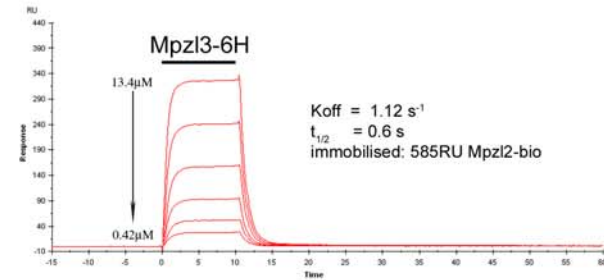
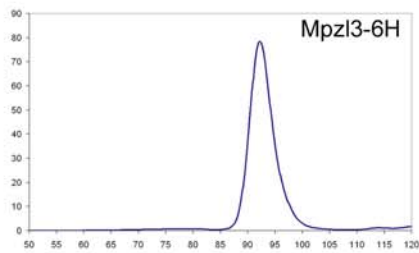
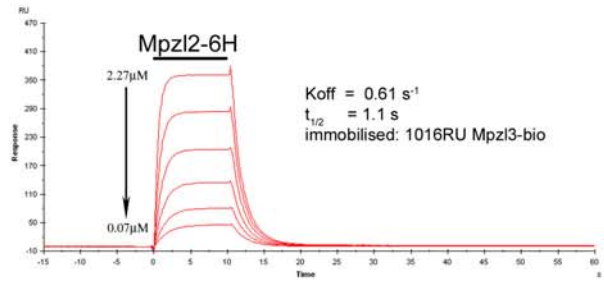
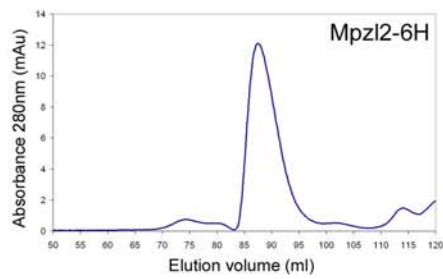
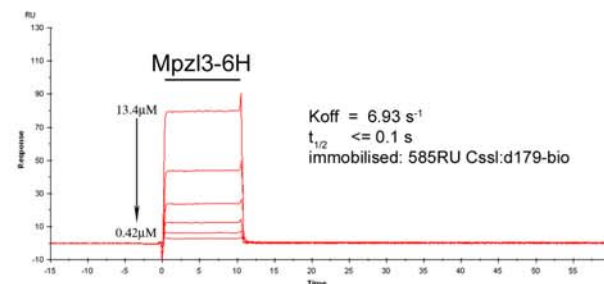
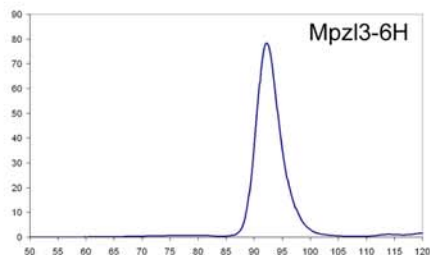
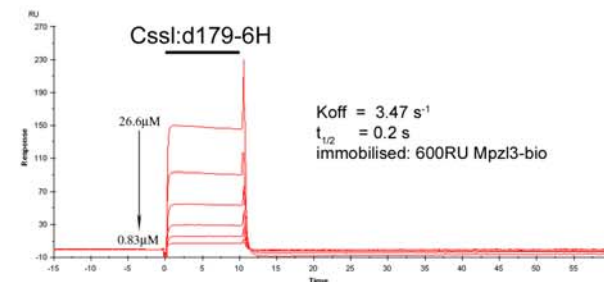
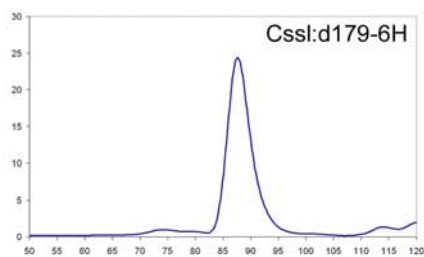


Figure S1.2

Interaction 5: Mpzl2-Mpzl3



Interaction 6: Mpzl3-Cssl:d179



Interaction 7: Ncam1-Musk FL

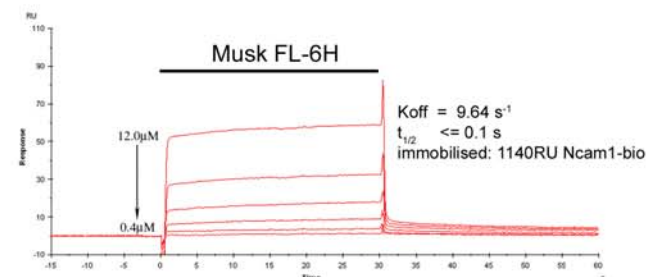
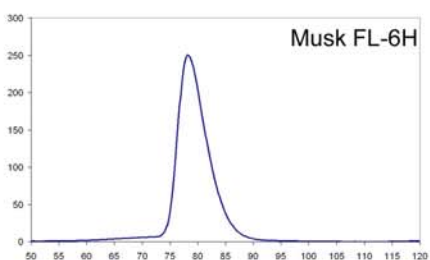
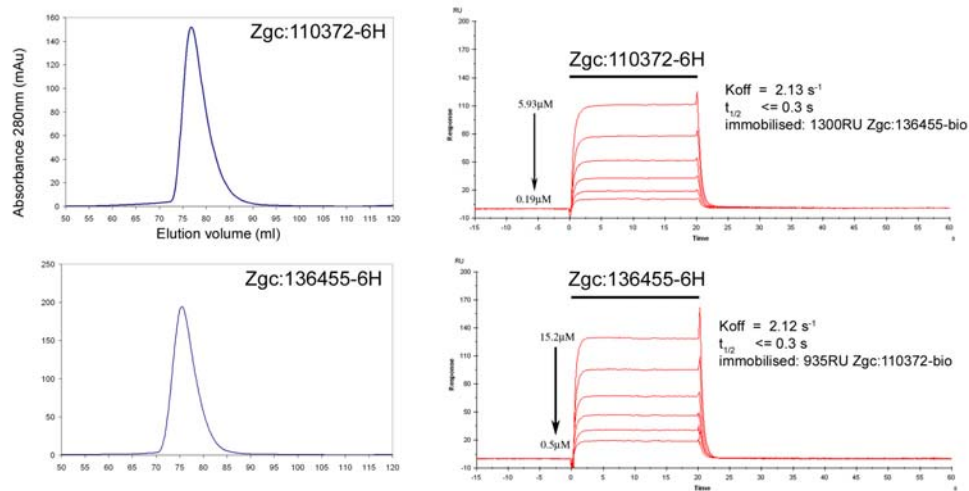
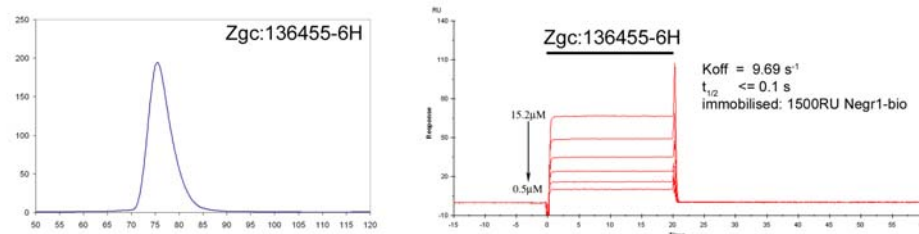


Figure S1.3

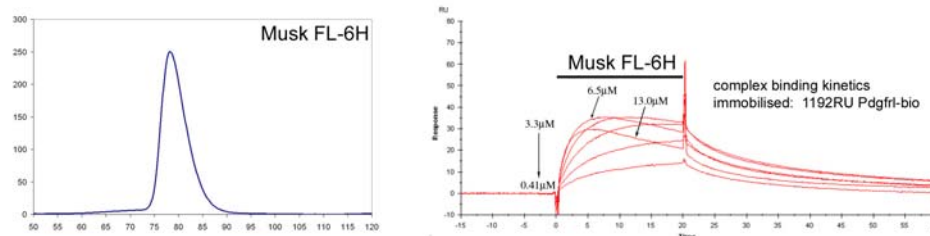
Interaction 8: Zgc:136455-Zgc:110372



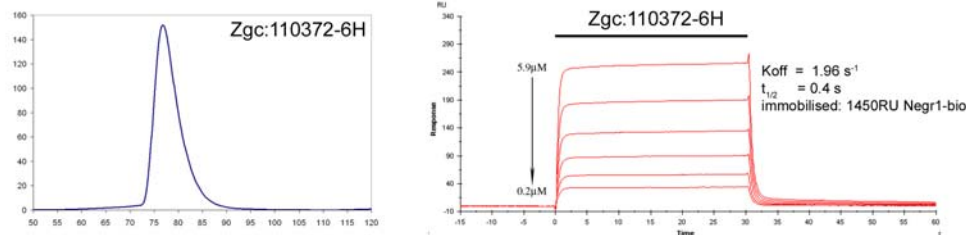
Interaction 9: Zgc:136455-Negr1



Interaction 10: Pdgfr1-Musk FL



Interaction 15: Negr1-Zgc:110372



Supplementary Figure S1. Interaction validation and quantification using surface plasmon resonance. For each interaction, the gel filtration profile of the purified 6-His-tagged-protein injected is shown in the left panels and the reference-subtracted SPR traces in the right panels. The binding curves of six 2-fold serial dilutions of the purified protein are shown and the concentrations indicated. The wash out phase of the binding was fitted to a 1:1 dissociation model, and the off-rate constant (k_{off}) was determined and a half-life calculated (see methods). Interaction 10 showed complex binding characteristics and so no kinetic parameters were calculated.