

MicroRNA-target pairs in the rat kidney identified by microRNA microarray, proteomic, and bioinformatic analysis

Zhongmin Tian, Andrew S. Greene, Jennifer L. Pietrusz, Isaac R. Matus, and Mingyu Liang*

*correspondence: mliang@mcw.edu

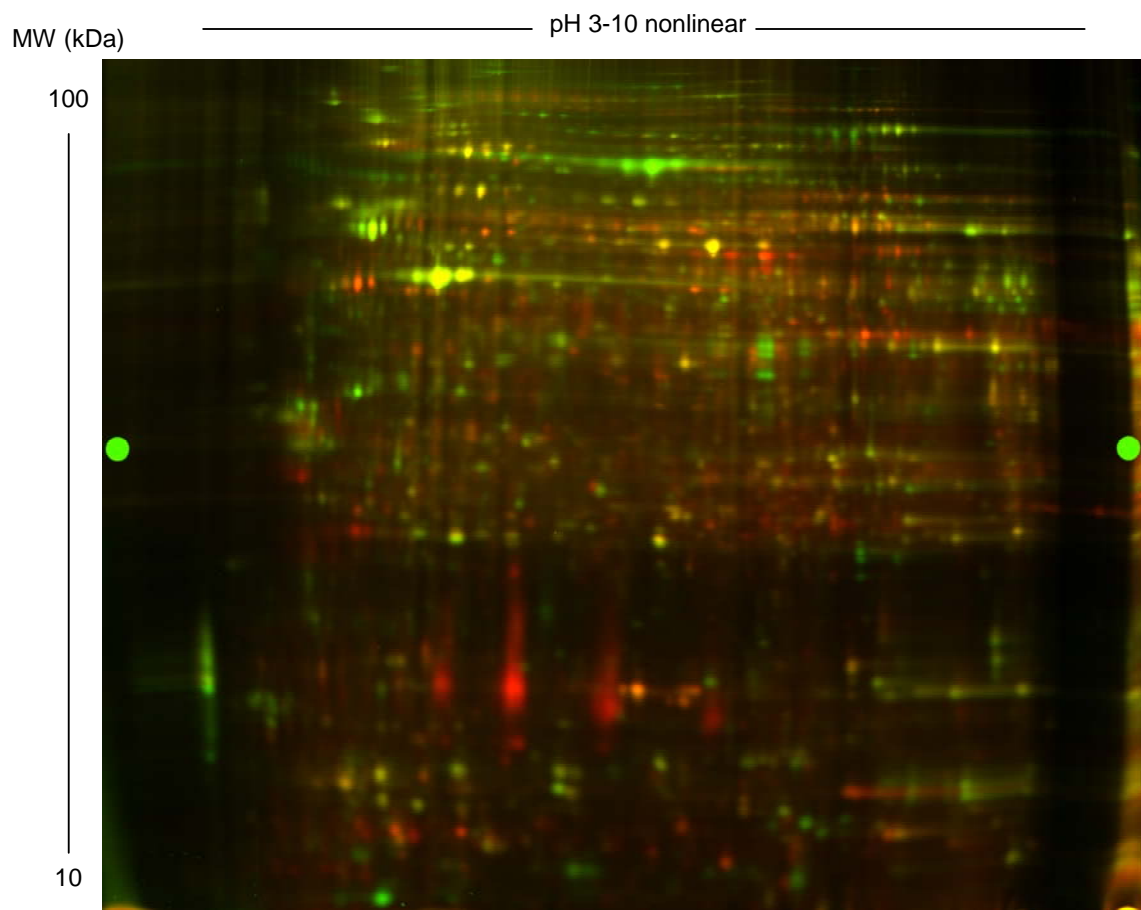
Supplemental Figure 1. A representative picture of Differential In-gel Electrophoresis (DIGE) comparing the renal cortical and medullary proteomes. In this particular gel, the cortical and medullary protein samples were labeled with Cy3 (shown as red) and Cy5 (shown as green), respectively. The reference sample, labeled with Cy2, is not shown. A 24cm, pH 3-10 non-linear IPG dry strip was used for isoelectric focusing. A 12.5% vertical gel was used for the second dimension SDS-PAGE. Differentially expressed spots are described in **Supplemental Figures 2** and **3** and **Supplemental Tables 1** and **2**.

Supplemental Figure 2. Locations of protein spots enriched in the renal cortex compared to the renal medulla. The spot IDs shown here (zoom in to see) correspond to the spot IDs in **Supplemental Table 1** where protein identity and other information are provided for each spot. Only differentially expressed spots that were identified by mass spectrometry analysis are shown.

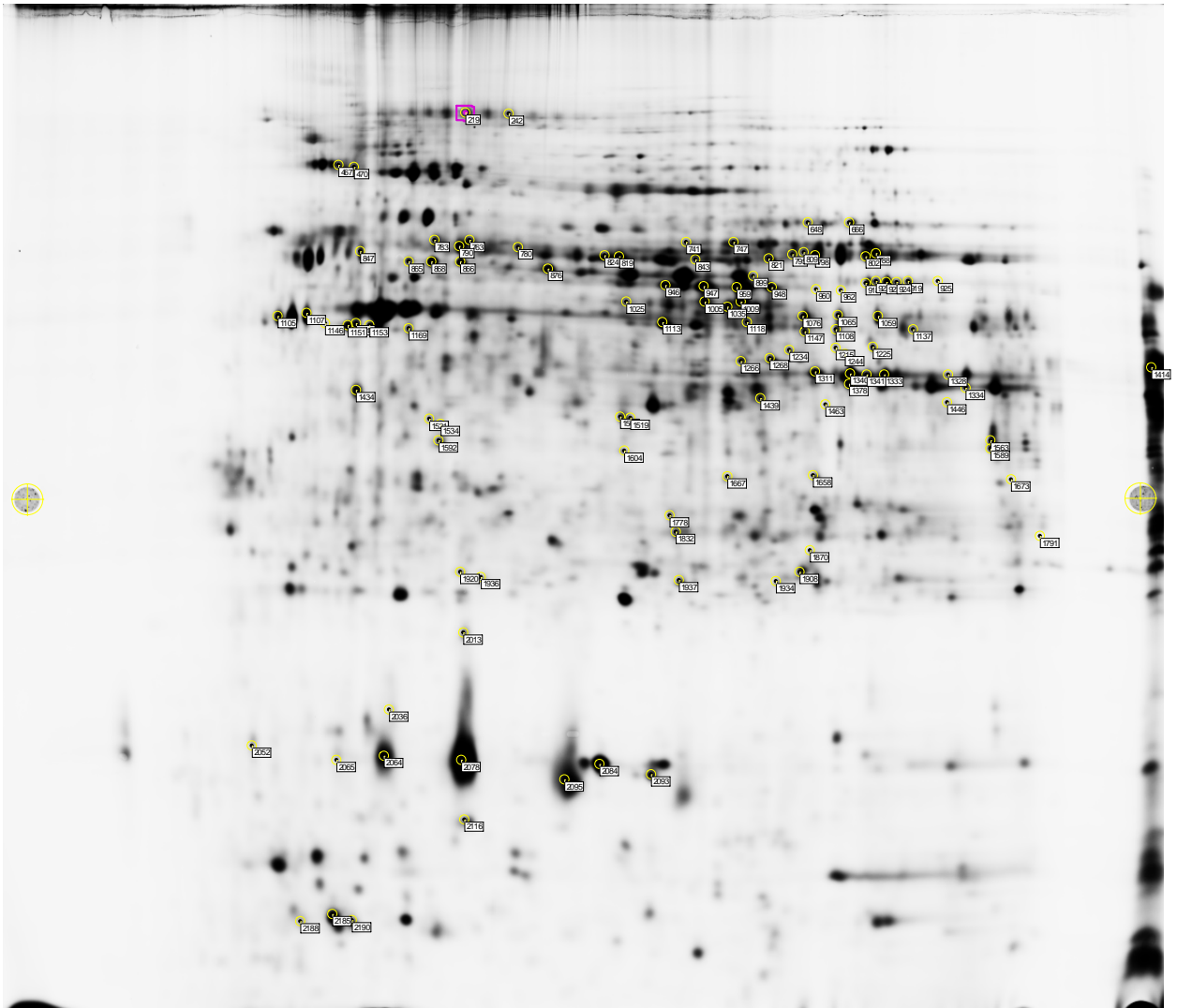
Supplemental Figure 3. Locations of protein spots enriched in the renal medulla compared to the renal cortex. The spot IDs shown here (zoom in to see) correspond to the spot IDs in **Supplemental Table 2** where protein identity and other information are provided for each spot. Only differentially expressed spots that were identified by mass spectrometry analysis are shown.

Supplemental Figure 4. A summary of reciprocal expression and the match with sequence-based computational prediction of microRNA-target pairs.

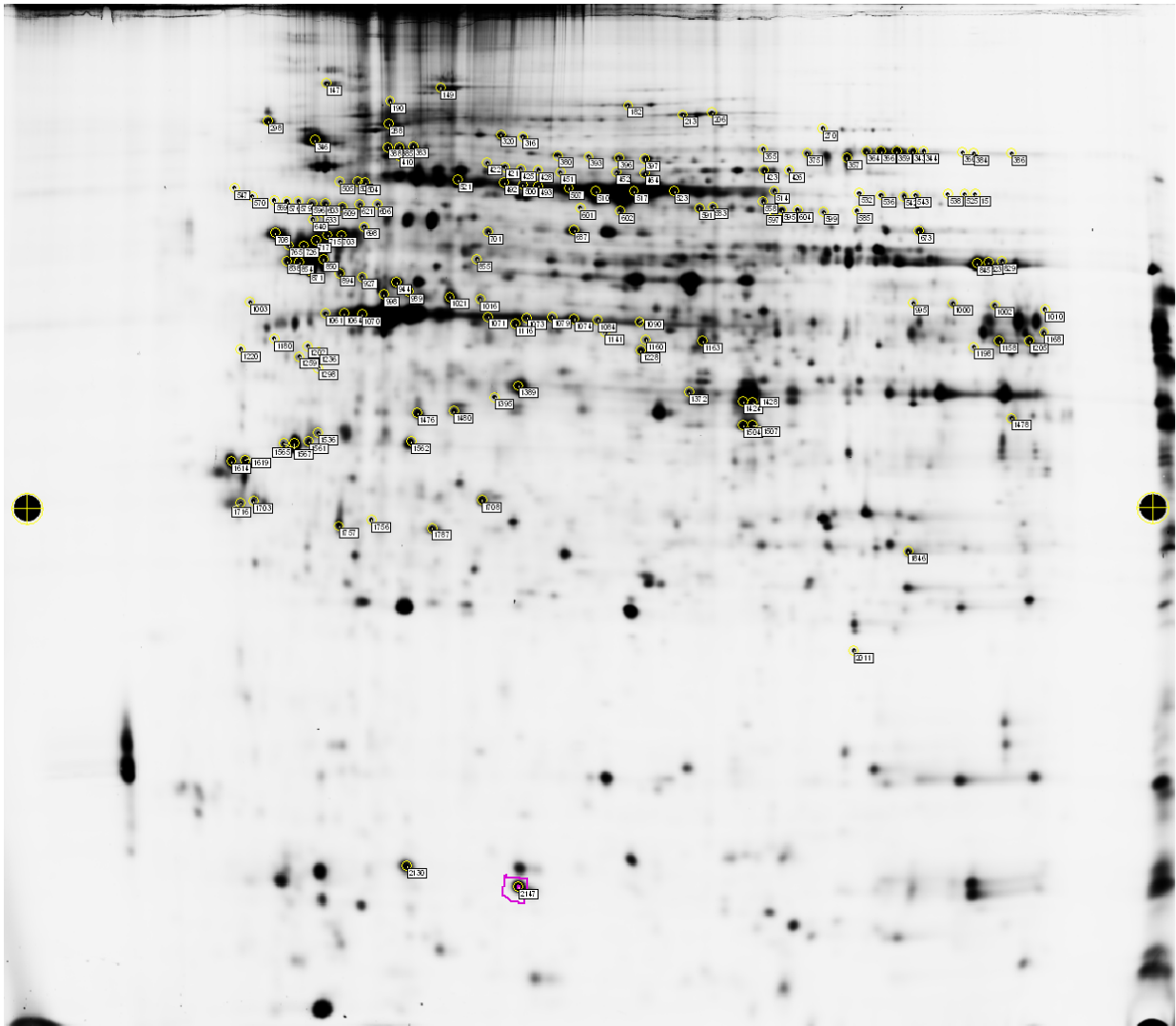
Supplemental Figure 1. A representative picture of Differential In-gel Electrophoresis (DIGE) comparing the renal cortical and medullary proteomes.



Supplemental Figure 2. Locations of protein spots enriched in the renal cortex compared to the renal medulla. (Zoom in to see spot IDs)



Supplemental Figure 3. Locations of protein spots enriched in the renal medulla compared to the renal cortex. (Zoom in to see spot IDs)



Supplemental Figure 4. A summary of reciprocal expression and the match with sequence-based predictions of microRNA-target pairs.

