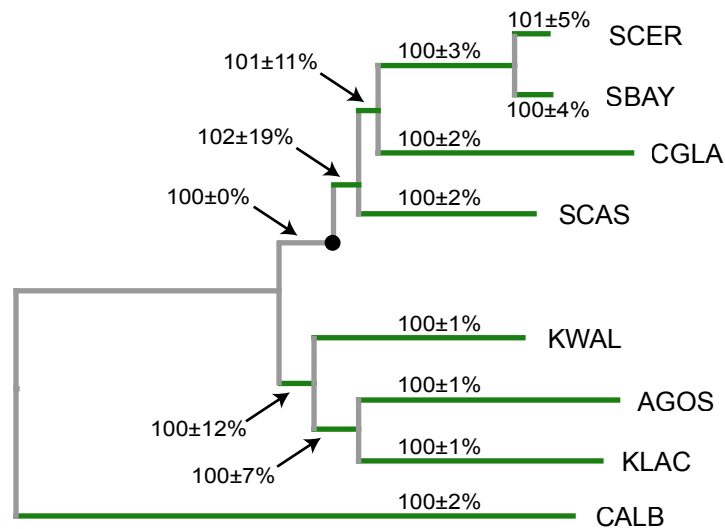
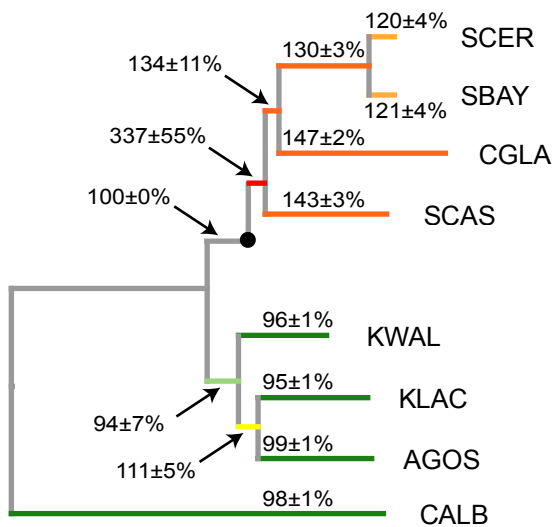


A**A2 replaced with a random sample of (single-copy) sites from A1**

Number of amino acid sites in A2': 33,720 (100%)

Median rate of post-WGD evolution: 100%

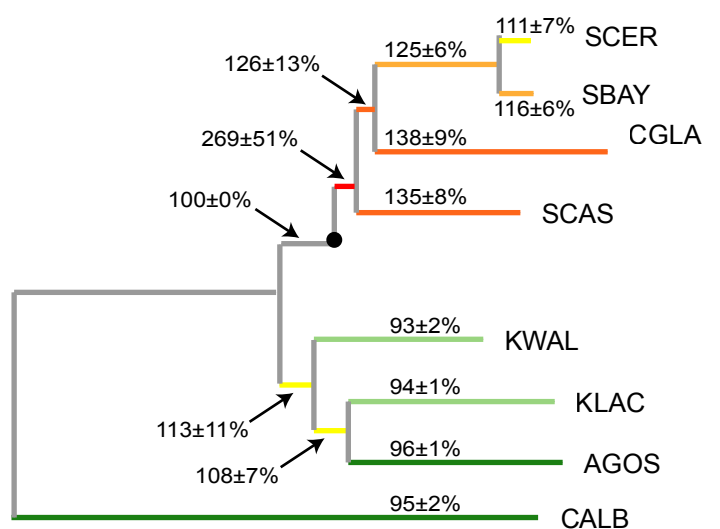
Median rate of pre-WGD evolution: 100%

**B****Sites with combinations of amino acids in *K. waltii*, *K. lactis* and *A. gossypii* that occur fewer than 5 times in either A1 or A2 discarded**

Number of amino acid sites in A2': 28,775 (85.3%)

Median rate of post-WGD evolution: 134%

Median rate of pre-WGD evolution: 96%

C**Equal numbers of sequences in A1 and A2**

Number of amino acid sites in A2': 33,619 (99.7%)

Median rate of post-WGD evolution: 126%

Median rate of pre-WGD evolution: 96%

Figure S2

Scannell and Wolfe