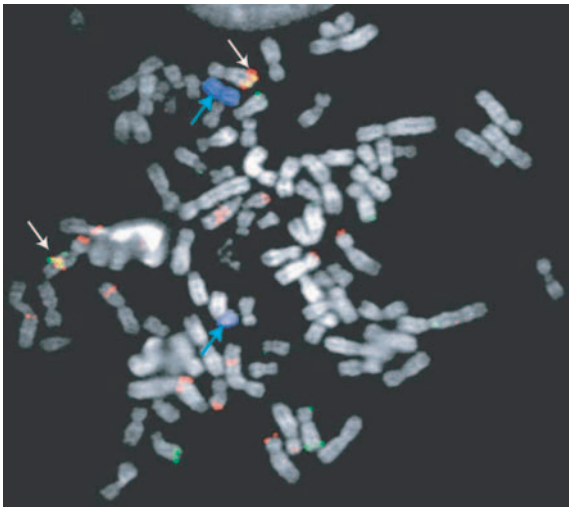
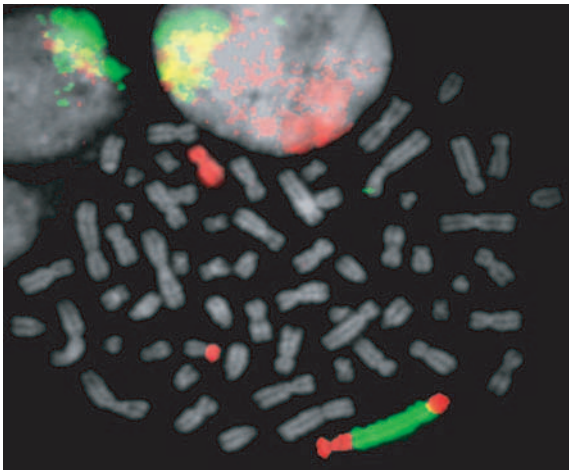


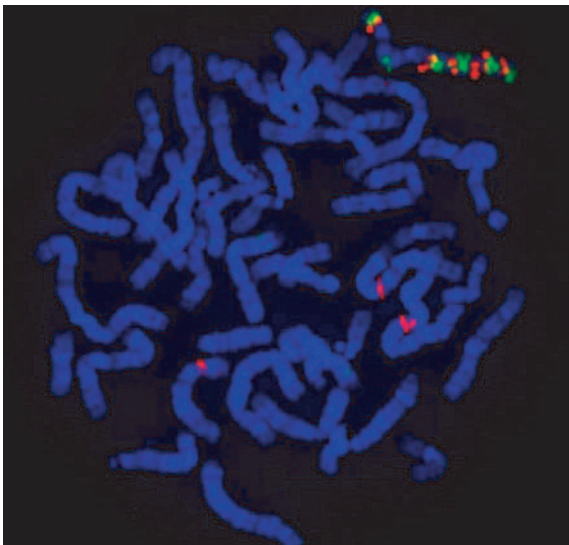
Supplementary Figure 2



Three colour FISH of amplicons in HCC1954. *ERBB2* (clone RP11-94L15) labelled blue, 5p15.33 (clone CTD-2265D9) labelled red and 8q24.21-q24.22 (*MYC*) (clone RP1-80K22) labelled green. Yellow signal identifies regions of co-localisation of the red and green probes (white arrows).



Two colour FISH of *MYCN* amplification in NCI-H1770. *MYCN* specific probe RP11-355H10 labelled green, together with a chromosome 12 paint labelled red. A large homogeneously staining region composed of chromosome 2 sequence around *MYCN* is inserted into chromosome 12. Two apparently normal chromosomes 2 were visible by SKY, only one of these showed a signal for *MYCN*.



Two colour FISH of amplicons in NCI-H2171. *MYC* probe (clone RP11-414A9) in amplicon 8q24.13-q24.21, labelled green. Probe RP11-425D17 located in the amplicon at 12p11.23-p11.22 labelled in red. The marker chromosome highlighted includes sequence from all the amplicons in this line.