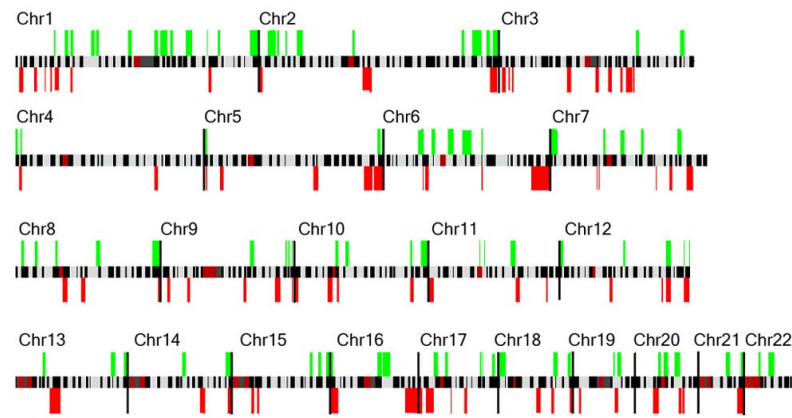
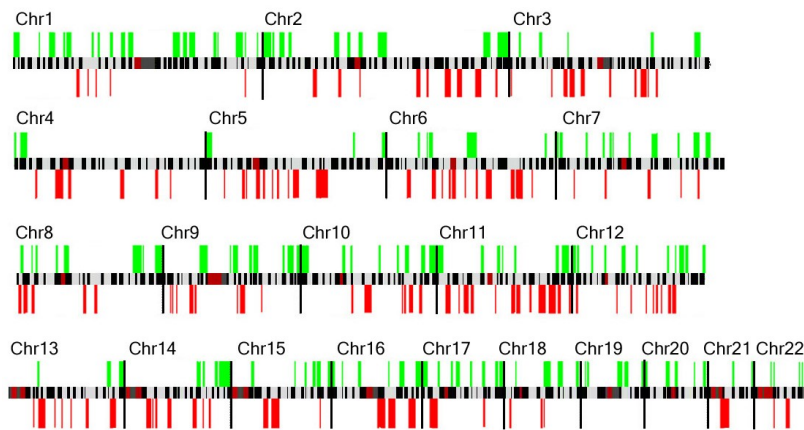


Supplementary Figure 1. Genome-wide STAC results for chromosomes 1-22.

Locations with p -value < 0.05 for either statistic are plotted. *Green*: gain, *Red*: loss. **(a)** neuroblastoma. **(b)** breast cancer. Locations for which the "best" stack (*i.e.* stack with minimum p -value anchored at the location) comprises three or less intervals are not reported.

Supplementary Figure 1.**(a) Neuroblastoma****(b) Breast Cancer**