



## A harmonized public resource of deeply sequenced diverse human genomes

Zan Koenig, Mary T. Yohannes, Lethukuthula L. Nkambule, et al.

*Genome Res.* published online May 15, 2024

Access the most recent version at doi:[10.1101/gr.278378.123](https://doi.org/10.1101/gr.278378.123)

---

**P<P** Published online May 15, 2024 in advance of the print journal.

**Creative Commons License**

This article is distributed exclusively by Cold Spring Harbor Laboratory Press for the first six months after the full-issue publication date (see <https://genome.cshlp.org/site/misc/terms.xhtml>). After six months, it is available under a Creative Commons License (Attribution-NonCommercial 4.0 International), as described at <http://creativecommons.org/licenses/by-nc/4.0/>.

**Email Alerting Service**

Receive free email alerts when new articles cite this article - sign up in the box at the top right corner of the article or [click here](#).

---

Advance online articles have been peer reviewed and accepted for publication but have not yet appeared in the paper journal (edited, typeset versions may be posted when available prior to final publication). Advance online articles are citable and establish publication priority; they are indexed by PubMed from initial publication. Citations to Advance online articles must include the digital object identifier (DOIs) and date of initial publication.

---

To subscribe to *Genome Research* go to:  
<https://genome.cshlp.org/subscriptions>

# A harmonized public resource of deeply sequenced diverse human genomes

Zan Koenig,<sup>1,2,13</sup> Mary T. Yohannes,<sup>1,2,13</sup> Lethukuthula L. Nkambule,<sup>1,2</sup>  
 Xuefang Zhao,<sup>3,4,5</sup> Julia K. Goodrich,<sup>2,3</sup> Heesu Ally Kim,<sup>1</sup> Michael W. Wilson,<sup>3</sup>  
 Grace Tiao,<sup>3</sup> Stephanie P. Hao,<sup>3,4,5</sup> Nareh Sahakian,<sup>6</sup> Katherine R. Chao,<sup>3</sup>  
 Mark A. Walker,<sup>4,7</sup> Yunfei Lyu,<sup>8</sup> gnomAD Project Consortium, Heidi L. Rehm,<sup>3,4</sup>  
 Benjamin M. Neale,<sup>1,2,3,9</sup> Michael E. Talkowski,<sup>1,3,4,5</sup> Mark J. Daly,<sup>1,2,3,10,11</sup>  
 Harrison Brand,<sup>3,4,5</sup> Konrad J. Karczewski,<sup>1,2,3,4,9</sup> Elizabeth G. Atkinson,<sup>1,2,12</sup>  
 and Alicia R. Martin<sup>1,2,3,4</sup>

<sup>1</sup>Stanley Center for Psychiatric Research, The Broad Institute of MIT and Harvard, Cambridge, Massachusetts 02142, USA; <sup>2</sup>Analytic and Translational Genetics Unit, Massachusetts General Hospital, Boston, Massachusetts 02114, USA; <sup>3</sup>Program in Medical and Population Genetics, The Broad Institute of MIT and Harvard, Cambridge, Massachusetts 02142, USA; <sup>4</sup>Center for Genomic Medicine, Massachusetts General Hospital, Boston, Massachusetts 02114, USA; <sup>5</sup>Department of Neurology, Massachusetts General Hospital and Harvard Medical School, Boston, Massachusetts 02114, USA; <sup>6</sup>Broad Genomics, The Broad Institute of MIT and Harvard, Cambridge, Massachusetts, 02141, USA; <sup>7</sup>Data Sciences Platform, The Broad Institute of MIT and Harvard, Cambridge, Massachusetts 02142, USA; <sup>8</sup>Department of Biostatistics, Harvard T.H. Chan School of Public Health, Boston, Massachusetts 02115, USA; <sup>9</sup>Novo Nordisk Foundation Center for Genomic Mechanisms of Disease, Broad Institute of MIT and Harvard, Cambridge, Massachusetts 02142, USA; <sup>10</sup>Department of Medicine, Harvard Medical School, Boston, Massachusetts 02115, USA; <sup>11</sup>Institute for Molecular Medicine Finland, 00290 Helsinki, Finland; <sup>12</sup>Department of Molecular and Human Genetics, Baylor College of Medicine, Houston, Texas 77030, USA

Underrepresented populations are often excluded from genomic studies owing in part to a lack of resources supporting their analyses. The 1000 Genomes Project (1kGP) and Human Genome Diversity Project (HGDP), which have recently been sequenced to high coverage, are valuable genomic resources because of the global diversity they capture and their open data sharing policies. Here, we harmonized a high-quality set of 4094 whole genomes from 80 populations in the HGDP and 1kGP with data from the Genome Aggregation Database (gnomAD) and identified over 153 million high-quality SNVs, indels, and SVs. We performed a detailed ancestry analysis of this cohort, characterizing population structure and patterns of admixture across populations, analyzing site frequency spectra, and measuring variant counts at global and sub-continental levels. We also show substantial added value from this data set compared with the prior versions of the component resources, typically combined via liftOver and variant intersection; for example, we catalog millions of new genetic variants, mostly rare, compared with previous releases. In addition to unrestricted individual-level public release, we provide detailed tutorials for conducting many of the most common quality-control steps and analyses with these data in a scalable cloud-computing environment and publicly release this new phased joint callset for use as a haplotype resource in phasing and imputation pipelines. This jointly called reference panel will serve as a key resource to support research of diverse ancestry populations.

[Supplemental material is available for this article.]

The 1000 Genomes Project (1kGP) and Human Genome Diversity Project (HGDP) have been among the most valuable genomic resources because of the breadth of global diversity they capture and their open sharing policies with consent to release unrestricted individual-level data (Rosenberg et al. 2002; Li et al. 2008; The 1000 Genomes Project Consortium 2012, 2015; Bergström et al. 2020). Consequently, genetic data from these resources have

been routinely generated using the latest genomics technologies and serve as a ubiquitous resource of globally diverse populations for a wide range of disease, evolutionary, and technical studies. These projects are complementary; the 1kGP is larger and has consisted of whole-genome sequencing (WGS) data for many years; as such, it has been the default population genetic reference data set,

<sup>13</sup>These authors contributed equally to this work.

Corresponding author: [armartin@broadinstitute.org](mailto:armartin@broadinstitute.org)

Article published online before print. Article, supplemental material, and publication date are at <https://www.genome.org/cgi/doi/10.1101/gr.278378.123>.

© 2024 Koenig et al. This article is distributed exclusively by Cold Spring Harbor Laboratory Press for the first six months after the full-issue publication date (see <https://genome.cshlp.org/site/misc/terms.xhtml>). After six months, it is available under a Creative Commons License (Attribution-NonCommercial 4.0 International), as described at <http://creativecommons.org/licenses/by-nc/4.0/>.

consisting of 3202 genomes including related individuals that were recently sequenced to high coverage (Ebert et al. 2021; Byrska-Bishop et al. 2022). The 1kGP has also been the most widely used haplotype resource, serving as a reference panel for phasing and imputation of genotype data for many genome-wide association studies (GWAS) (Howie et al. 2012; Lam et al. 2020). HGDP was founded three decades ago by population geneticists to study human genetic variation and evolution and was designed to span a greater breadth of diversity, although with fewer individuals from each component population (Cavalli-Sforza et al. 1991; Cavalli-Sforza 2005). Originally assayed using only GWAS array data, 948 individuals have recently undergone deep WGS and fill some major geographic gaps not represented in the 1kGP, for example, in the Middle East, sub-Saharan Africa, parts of the Americas, and Oceania (Bergström et al. 2020).

The 1kGP and HGDP data sets have been invaluable separately, but far larger genomic data aggregation efforts, such as the Genome Aggregation Database (gnomAD) (Karczewski et al. 2020) and TOPMed (Taliun et al. 2021), have clearly shown the utility of harmonizing such data sets through the broad uptake of their publicly released summaries of large numbers of high-quality whole genomes. For example, the gnomAD browser of allele frequencies has vastly improved clinical interpretation of rare disease patients worldwide (Karczewski et al. 2017). Additionally, the TOPMed Imputation Server facilitates statistical genetic analyses of complex traits by improving phasing and imputation accuracy compared with existing resources (Taliun et al. 2021). Yet, without individual-level data access from these larger resources owing to more restrictive permissions, the 1kGP and HGDP genomes remain the most uniquely valuable resources for many of the most common genetic analyses. These include genetic simulations, ancestry analysis including local ancestry inference (Maples et al. 2013), genotype refinement of low-coverage genomes (Rubinacci et al. 2021), granular allele frequency comparisons at the subcontinental level, investigations of individual-level sequencing quality metrics, and many more.

Previously, researchers wishing to combine HGDP and 1kGP into a merged data set were left with suboptimal solutions. Specifically, the sequenced data sets had been called separately, requiring intersection of previously called sites rather than a harmonized joint callset. Additionally, they were on different reference builds, requiring lifting over of a large data set before merging, which introduces errors and inconsistencies. Here, we have created a best-in-class, publicly released, harmonized, and jointly called resource of HGDP + 1kGP on GRCh38 that will facilitate analyses of diverse cohorts. This globally representative haplotype resource better captures the breadth of genetic variation across diverse geographical regions than does previous component studies. Specifically, we aggregated these genomes into gnomAD and then jointly processed these 4094 high-coverage whole genomes; jointly called variants consisting of single-nucleotide variants (SNVs), insertions/deletions (indels), and structural variants (SVs); conducted harmonized sample, variant, and genotype quality control (QC); and separately released these individual-level genomes to facilitate a wide breadth of analyses. We quantify the number of variants identified in this new callset compared with existing releases and identify more variants as a result of joint variant calling, construct a resource of haplotypes for use as a phasing and imputation panel, examine the ancestry composition of this diverse set of populations, and publicly release these data without restriction alongside detailed tutorials illustrating how to conduct many of the most common genomic analyses.

## Results

### A harmonized resource of high-quality, high-coverage diverse whole genomes

Here, we have developed a high-quality resource of diverse human genomes for full individual-level public release along with a guide for conducting the most common genetic analyses. To this end, we first extracted from gnomAD jointly called variants from 4150 whole genomes recently sequenced to high coverage from the 1kGP and HGDP (Bergström et al. 2020; Byrska-Bishop et al. 2022), the latter of which are new to gnomAD, and then harmonized project metadata (Supplemental Table S1). Figure 1A shows the locations and sample sizes of populations included in this harmonized resource. After sample, variant, and genotype QC (Chen et al. 2024), including ancestry outlier removal (Methods) (Supplemental Table S2), we identified 153,894,851 high-quality variants across 4094 individuals, 3400 of whom are inferred to be unrelated (Methods) (Supplemental Table S3). We computed the mean coverage within each population and project (Supplemental Figs. S1, S2) as well as the mean number of SNVs per individual within each population to better understand data quality and population genetic variation (Supplemental Table S4). Although coverage was more variable among samples in the HGDP ( $\mu = 34$ ,  $\sigma = 6$ , range = 23–75 $\times$ ) than in the 1kGP ( $\mu = 32$ ,  $\sigma = 3$ , range = 26–66 $\times$ ), consistent with older samples and more variable data generation strategies (Bergström et al. 2020), all genomes had sufficient coverage to perform population genetic analysis. Consistent with human population history and as seen before (The 1000 Genomes Project Consortium 2015), African populations had the most genetic variation with 6.1 million SNVs per individual, whereas out-of-Africa populations had an average of 5.3 million SNVs (Supplemental Table S4; Fig. 1B). The San had the most genetic variants as well as singletons per genome on average overall (Supplemental Table S4).

We generated a jointly genotyped SV callset by detecting SVs in the HGDP genomes (Supplemental Fig. S3) using the same ensemble SV discovery tool, GATK-SV (Collins et al. 2020), as was used to generate SV calls in the high-coverage 1kGP genomes (Byrska-Bishop et al. 2022). We combined SVs from HGDP and 1kGP samples to form a nonredundant set of SV sites and uniformly genotyped them across all samples in both cohorts. In total, we identified 258,975 SV loci across 4151 HGDP and 1kGP samples (Supplemental Fig. S4A). The frequencies of SVs were consistent with Hardy–Weinberg equilibrium (Supplemental Fig. S4F), and distributions matched expectations from previous cohorts with the vast majority of SVs being rare (84.2% SVs at <1% allele frequency among the population) (Supplemental Fig. S4C). Additionally, SV size is inversely correlated with frequency (Sudmant et al. 2015; Collins et al. 2020; Byrska-Bishop et al. 2022), with the notable exceptions of peaks consistent with known mobile elements, including *Alu*, LINE-1, and SVA (Fig. 1C). In individual genomes, we detected an average of 9301 SVs consisting primarily of deletions ( $N = 3646$ ), duplications ( $N = 1680$ ), and insertions ( $N = 3485$ ), as well as inversions ( $N = 13$ ) and complex SVs ( $N = 109$ ) (Fig. 1B; Supplemental Fig. S4B). This data set showed comparable sensitivity to the recent 1kGP (about 9679 SVs/genome) (Byrska-Bishop et al. 2022) and gnomAD v2 SV studies (about 7439 SVs/genome) (Collins et al. 2020). Consistent with SNVs and indels, we observed a larger number of SVs in African populations compared with others (Supplemental Fig. S5). The precision of our SV callsets have been evaluated using 35 samples with both short-read and long-read WGS data generated by the 1kGP and the Human Genome Structural Variation Consortium (HGSVC) (Ebert et al.

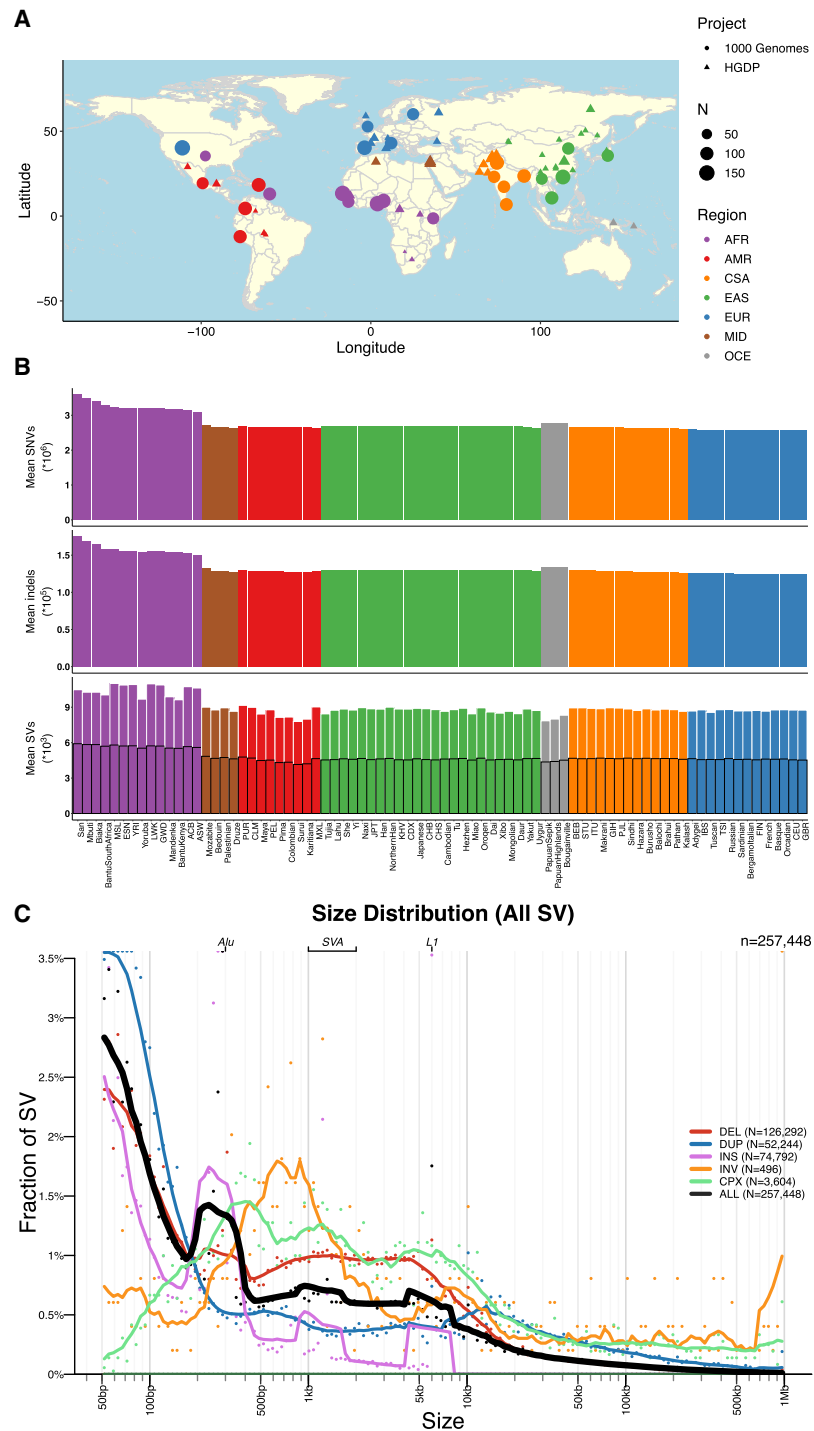
2021; Byrska-Bishop et al. 2022), in which 96.0% of the SVs overlapped either a short-read or long-read variant in the matched genome (Supplemental Table S6). We observed differences in number SVs across samples from HGDP and 1kGP owing to technical data generation differences, such as PCR status (Supplemental Fig. S6).

We examined global population genetic variation using principal component analysis (PCA) of the harmonized HGDP and 1kGP resource (Fig. 2A,B). As expected, we find PC1 differentiates AFR and non-AFR populations, PC2 differentiates EUR and EAS populations, and PC3 and PC4 differentiate AMR and CSA populations. Subcontinental structure is also apparent in later PCs and within geographical/genetic regions (Supplemental Table S1; Supplemental Figs. S9–S16). These results are recapitulated with the likelihood model implemented in ADMIXTURE, where  $K=2$  identifies similar structure in PC1,  $K=3$  identifies similar structure in PC2, and so on (Supplemental Fig. S7). The best fit value of  $K=6$  shown in Figure 2C was chosen based on fivefold cross-validation error (Supplemental Fig. S8).

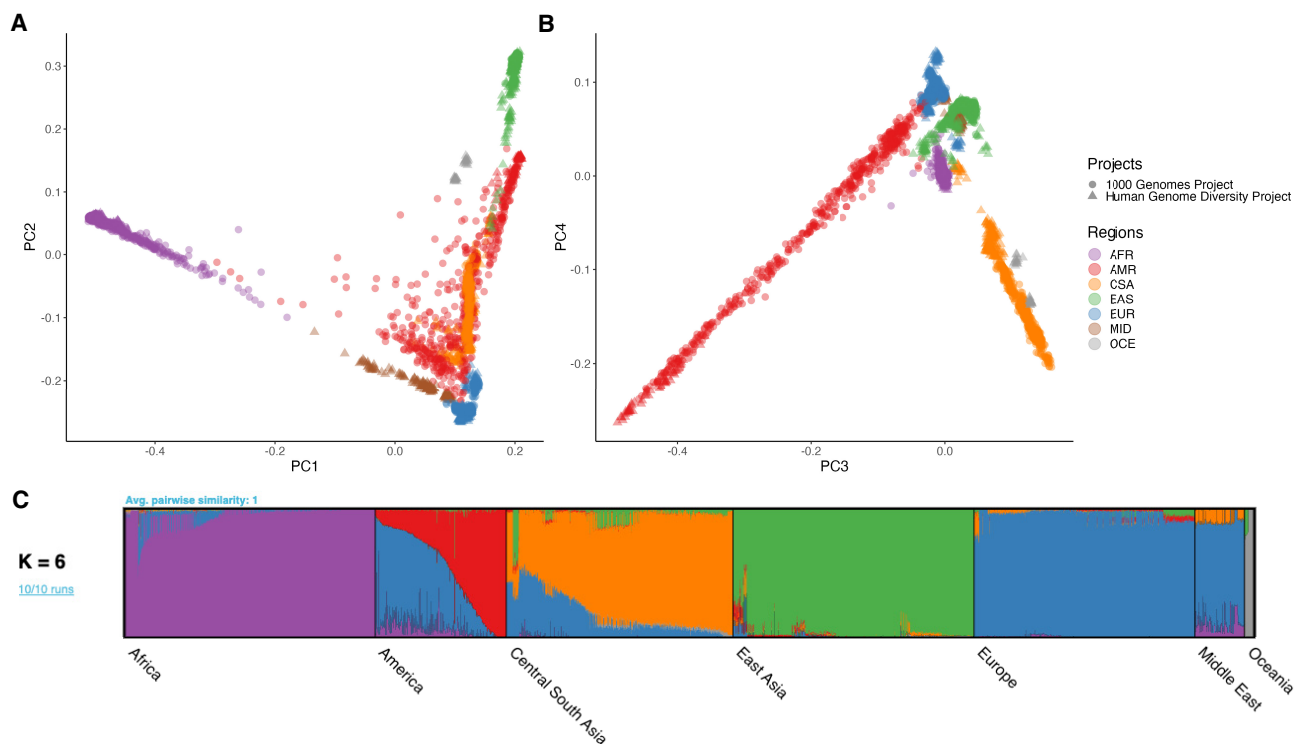
### Population genetic variation within and between subcontinental populations

We investigated the ancestry composition of populations within harmonized metadata labels (AFR, AMR, CSA, EAS, EUR, MID, and OCE) (Supplemental Table S1) using PCA and ADMIXTURE analysis. Subcontinental PCA highlights finer-scale structure within geographical/genetic regions (Supplemental Figs. S9–S16). For example, within AFR, the first several PCs differentiate South and Central African hunter-gatherer groups from others, and then differentiate populations from East and West Africa (Supplemental Fig. S10). For AFR and AMR populations, individuals cluster similarly to the global PCA, reflecting some global admixture present in these populations (Supplemental Figs. S10, S14). The MID and OCE populations are made up of samples from the HGDP data set only as 1kGP did not contain samples from these regions (Supplemental Figs. S15, S16).

We measured population genetic differentiation using common variants with Wright's fixation index,  $F_{ST}$  (Fig. 3A), calculated using PLINK 1.9 (Chang et al. 2015). When populations are clustered according to pairwise  $F_{ST}$



**Figure 1.** Geographical locations and genetic variants across populations. (A) Global map indicating approximate geographical locations where samples were collected. Coordinates were included for each population originating from the Geography of Genetic Variants browser as well as metadata from the HGDP (Marcus and Novembre 2017; Bergström et al. 2020). (B) Mean number of SNVs (top panel), indels (middle panel), and SVs (bottom panel) per individual within each population. The bottom panel showing SVs has a set of outlined bars in black that counts the subset of SVs called outside of highly repetitive genomic regions, which decreases calling accuracy in short-read sequencing data (Zhao et al. 2021). The bars without the outline indicate total SV counts regardless of whether they span repetitive regions. (A,B) Colors are consistent with geographical/genetic regions as follows: (AFR) admixed African, (AMR) admixed American, (CSA) Central/South Asian, (EAS) East Asian, (EUR) European, (MID) Middle Eastern, and (OCE) Oceanian. (C) Sizes of SVs decay in frequency with increasing size overall with notable exceptions of mobile elements, including *Alu*, SVA, and LINE-1. (DEL) Deletion, (DUP) duplication, (CNV) copy number variant, (INS) insertion, (INV) inversion, and (CPX) complex rearrangement.



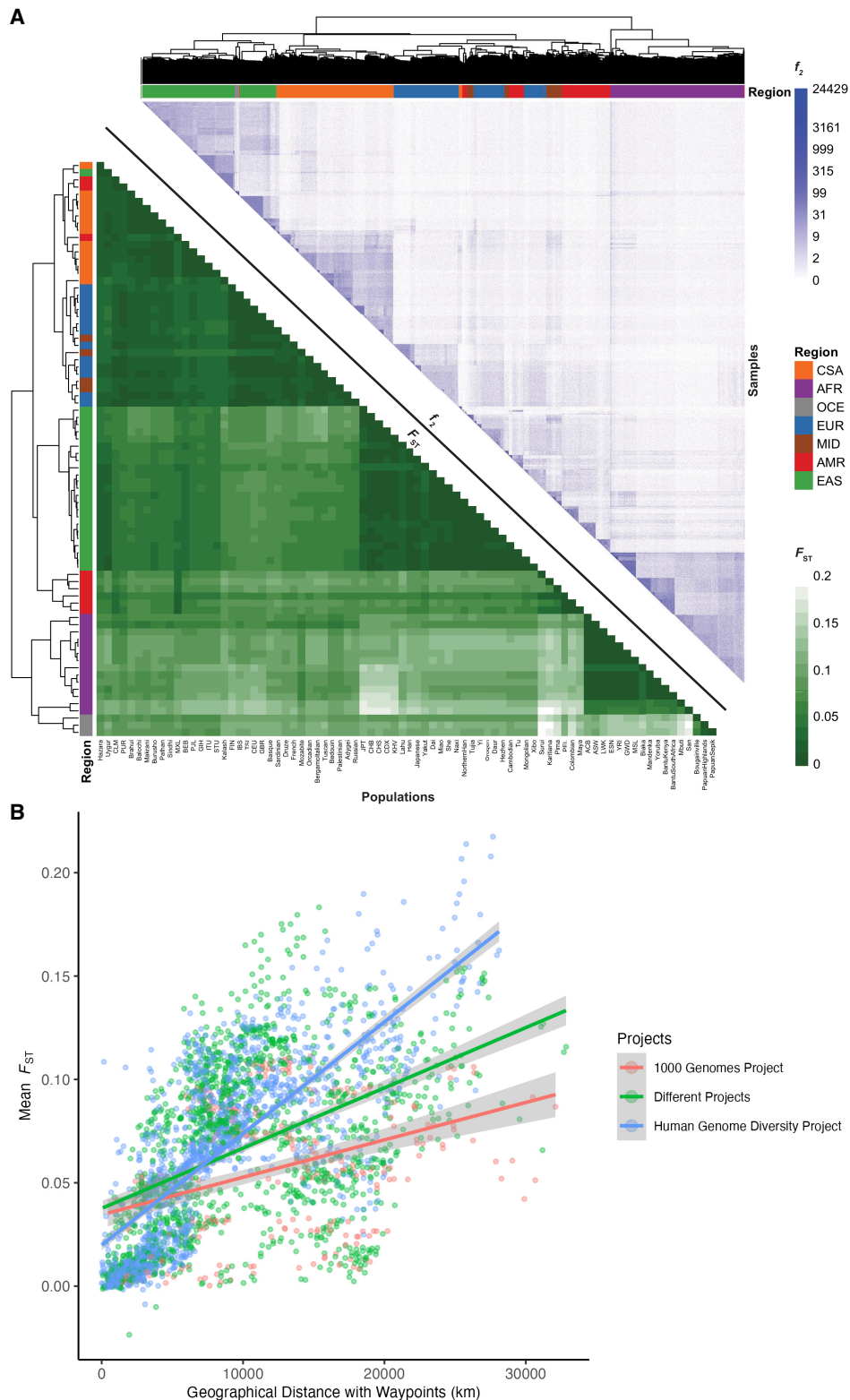
**Figure 2.** Global ancestry analysis of genetic structure in the HGDP and 1kGP resource. Regional abbreviations are as in Figure 1. (A,B) Principal components analysis (PCA) plots for PC1 versus PC2 (A) and PC3 versus PC4 (B) showing global ancestry structure across HGDP + 1kGP. Subsequent PCs separated structure within geographical/genetic regions (Supplemental Figs. S9–S16). (C) ADMIXTURE analysis at the best-fit value of  $K = 6$ .

between groups, they largely cluster by geographical/genetic region labels with a few exceptions (Supplemental Fig. S18). For example, three AMR populations are interspersed with other populations, whereas the rest have a cluster of their own closer to the EAS populations, consistent with their population history and variable ancestry proportions that span multiple continents. Additionally, MID populations are interspersed among the EUR populations (Bedouin and Palestinian cluster together, whereas Mozabite and Druze cluster by themselves). A CSA population, Kalash, clusters among the EUR, and an EAS population, Uyгур, clusters among the CSA. The AFR populations Mbuti and San cluster with the OCE. This mirrors their high divergence with other AFR populations and the fact that heatmap correlations are drawn from all pairwise  $F_{ST}$  estimates across populations, not just AFR. There are no interspersed populations within the other AFR cluster, and no populations from AFR are interspersed among the other regions (Supplemental Table S7; Supplemental Fig. S18).

We also compared  $F_{ST}$  versus geographical distance. We computed great circle distances using the haversine formula (earth's radius = 6371 km) and pairwise geographic distances using five waypoints that reflect human migration patterns, recapitulating previous work (Ramachandran et al. 2005). The linear relationship between  $F_{ST}$  and geographical distance differs by project; specifically, HGDP has a steeper slope relating distance to  $F_{ST}$  (Fig. 3B), likely reflecting the anthropological design intended to capture more divergent populations compared with the samples in 1kGP, which reflect some of the largest populations. We compared Pearson's correlation and Mantel tests to assess the change in the linear relationship between  $F_{ST}$  and geographical distance when

incorporating waypoints. The Pearson correlation coefficient and Mantel statistic are both higher when waypoints are incorporated, with the highest values being when both pairs of populations are from HGDP with a correlation coefficient of 0.76 ( $P$ -value  $< 2.2 \times 10^{-16}$ ) and Mantel statistic of 0.55 ( $P$ -value = 0.01) (Supplemental Table S8).

$F_{ST}$  measurements require group comparisons and are only based on common variants, which typically arose early in human history. Hence, we also compared rare variant sharing via pairwise doubleton counts ( $f_2$  analyses) (Fig. 3A). On average, pairs of individuals within a population share 51.59 doubletons, although this varies considerably as a function of demography. For example, because of the elevated number of variants in individuals of African descent (Fig. 1), pairs of individuals within AFR populations share, on average, 75.57 doubletons, whereas pairs of individuals within out-of-Africa populations share 43.8 doubletons. The individual pairs that shared the most doubletons were largely from the San population, with the top 15 sharing between 14,715 and 24,429 doubletons. Very few doubletons are shared among pairs of individuals across populations within a geographical/genetic region ( $\mu = 6.79$ ,  $\sigma = 19.1$ ), with the highest doubleton count being 4130 between individuals from Bantu South Africa and San, both AFR populations. Even fewer doubletons are shared among pairs of individuals across populations from different geographical/genetic regions ( $\mu = 0.79$ ,  $\sigma = 1.77$ ) with the highest doubleton count being 638 between a pair of individuals from CDX and BEB, which are EAS and CSA populations, respectively.  $f_2$  clustering tends to follow project metadata labels by geographical/genetic region, with a few exceptions.



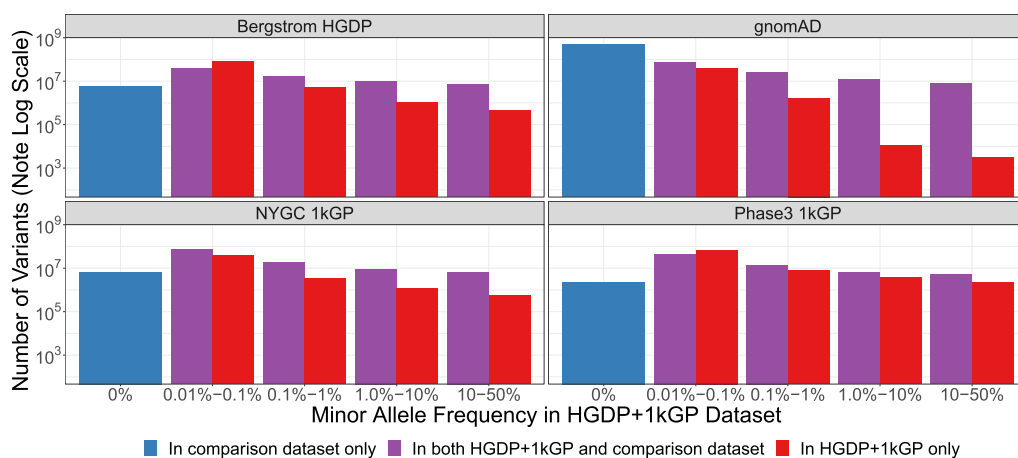
### A catalog of known versus novel genomic variation compared with existing data sets

To show the added benefit of jointly calling these two data sets compared with using each component data set alone, we have compiled metrics that compare our harmonized data set with each individual data set comprising it (Bergström et al. 2020; Byrška-Bishop et al. 2022), the previous phase 3 1kGP data set sequenced to lower coverage (The 1000 Genomes Project Consortium 2015), and the widely used gnomAD data set (Chen et al. 2024). This jointly called HGDP+1kGP data set contains 153,894,851 SNVs and indels that passed QC, whereas the phase 3 1kGP has 73,257,633. High-coverage WGS of the 1kGP (referred to here as NYGC 1kGP based on where they were sequenced) has 119,895,186, high-coverage WGS of the HGDP (referred to here as Bergström HGDP based on the publication) has 75,310,370, and the gnomAD has 644,267,978 high-quality SNVs and indels (Supplemental Table S10; Chen et al. 2024). Because gnomAD now contains both HGDP and 1kGP, we built a synthetic subset of gnomAD that removes allele counts contributed by HGDP and 1kGP. When comparing the HGDP+1kGP data set to this synthetic version of gnomAD that excludes HGDP+1kGP, we show that variants unique to gnomAD are disproportionately rare (Fig. 4; Supplemental Table S12). In contrast, compared with the comprising data sets of HGDP only, NYGC 1kGP only, and phase 3 1kGP, the HGDP+1kGP data set contributes a sizable fraction and number of variants spanning the full allele frequency spectrum, including both rare and common variants (Fig. 4). Specifically, there are 84 million novel variants (53%) in HGDP+1kGP compared with HGDP only, 43 million (27%) compared with NYGC 1kGP only, and 83 million (53%) compared with phase 3 1kGP (Supplemental Table S12). However, rare variants are particularly enriched; in all of the comparison data sets aside from gnomAD, the HGDP+1kGP data set contains the largest proportion of rare variants. Few variants in the phase 3 1kGP data set were not in the HGDP+1kGP data set or NYGC 1kGP because samples are entirely overlapping, as reported previously (Byrška-Bishop et al. 2022).

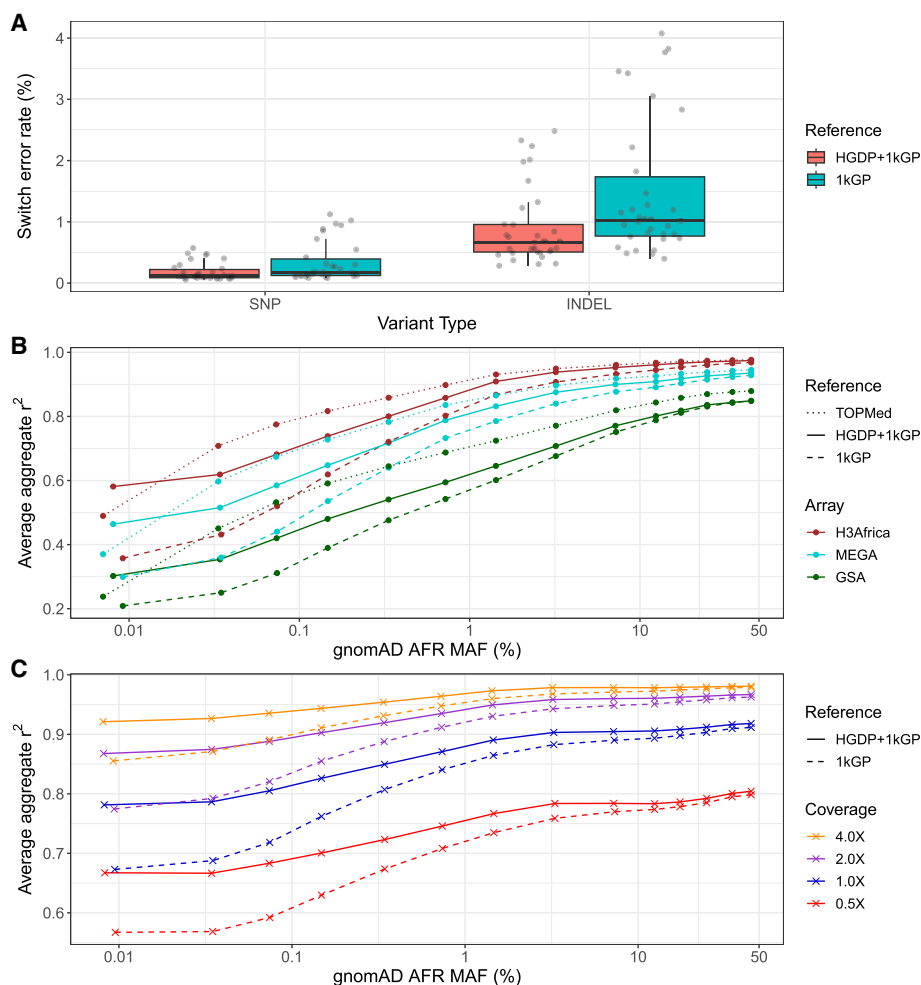
### Phased haplotypes improve phasing and imputation accuracy and flexibility compared with existing public resources

We next developed the HGDP+1kGP data set as a haplotype resource by phasing variants together using SHAPEIT5 (Hofmeister et al. 2023), including information about trios (Methods). We first evaluated the phasing switch error rate using 34 genomes that overlapped with 1kGP and had fully phased genome assemblies including long-read sequencing data in the Human Genome Structural Variation Consortium, phase 2 (HGSVC2) (Ebert et al. 2021). We treated the HGSVC2 genomes as “truth” and then compared statistical phasing with the HGDP+1kGP versus 1kGP reference panel. We find lower switch error rate when using HGDP+1kGP versus 1kGP only in both SNPs (mean=0.00184, sd=0.00145 in HGDP+1kGP vs. mean=0.00338, sd=0.00327 in 1kGP) and indels (mean=0.00899, sd=0.00627 in HGDP+1kGP vs. mean=0.0148, sd=0.0112 in 1kGP) (Fig. 5A).

We next evaluated imputation accuracy with common genetic data generation strategies. We used 93 down-sampled whole genomes sequenced as part of the NeuroGAP Project consisting of East and South African participants to either (1) sites on relevant and commonly used GWAS arrays (Illumina GSA, MEGA, and H3Africa) or (2) lower depths of coverage (0.5×, 1×, 2×, and 4×), as performed previously (Martin et al. 2021). We imputed GWAS arrays using IMPUTE5 (Rubinacci et al. 2020) and low-coverage genomes using GLIMPSE (Rubinacci et al. 2021). With several haplotype reference panels, we compared average imputation accuracy as a function of allele frequency estimated from gnomAD AFR frequency given our small sample size. For arrays, we compared imputation accuracy using NYGC 1kGP, HGDP+1kGP, and TOPMed imputation panels (Kowalski et al. 2019). As expected with GWAS arrays, HGDP+1kGP improves accuracy compared with 1kGP but not compared with the much larger TOPMed data (Fig. 5B). Because low-coverage genomes require individual-level haplotypes for imputation that ideally operate on genotype likelihoods rather than initial genotype calls (Rubinacci et al. 2021), we were unable to compare the TOPMed panel. For low-coverage genomes, we find much higher imputation accuracies with HGDP+1kGP. At



**Figure 4.** Number of variants identified in this data set compared with commonly used existing data sets as a function of allele frequency. The number of variants on a log scale is plotted by minor allele frequency bin within the harmonized HGDP+1kGP data set. We show variants found in the harmonized HGDP+1kGP data set only (red), variants shared between the harmonized data set and each comparison data set (purple), and variants that are only found in each comparison data set (blue). More information on exact numbers and comparisons by QC within and across data sets can be found in Supplemental Tables S11 and S12.



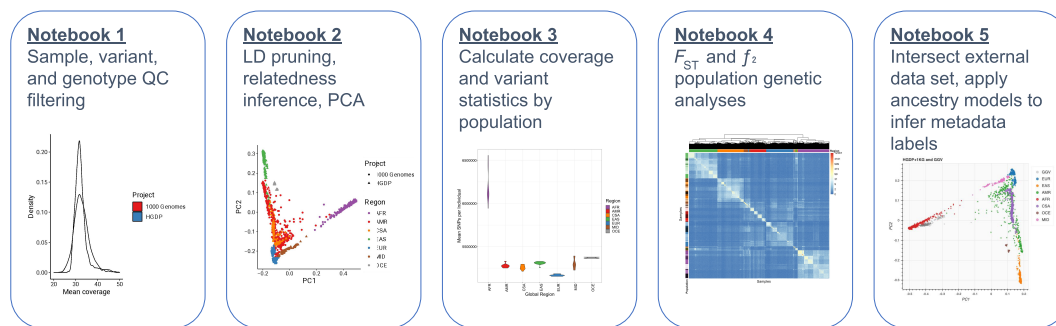
**Figure 5.** Phasing and imputation accuracy are improved across data generation strategies compared with existing reference panels. (A) Switch error rates for SNPs and indels in a truth set of 34 HGSVC2 genomes when using HGDP + 1kGP versus 1kGP reference panels for phasing. (B, C) Imputation performance as a function of minor allele frequency (MAF) for AFR in gnomAD v3.1 data using TOPMed, HGDP + 1kGP, and 1kGP reference panels in SNP array (B) and low-coverage sequencing data (C). Aggregate  $r^2$ , which is the correlation between the imputed dosages and high-coverage “truth” genotype calls, was computed in MAF bins and averaged across Chromosomes 1–22. The validation set is composed of 93 AFR individuals sequenced at 30× coverage (Martin et al. 2021).

rarer variants, the imputation accuracy differences owing to the reference panel used are almost as high as those owing to higher depths of sequencing; for example, rare variants sequenced to 2× depth and imputed with HGDP + 1kGP are imputed almost as accurately as rare variants sequenced to 4× depth and imputed with 1kGP, thus highlighting the utility of the larger sample size and diversity in this resource (Fig. 5C).

#### Facilitating broad uptake of HGDP + 1kGP as a public resource via development of detailed tutorials

In an effort to increase accessibility of this data set, we have made publicly available tutorials of our analyses implemented primarily in Hail (<https://hail.is>). Hail is an open source, Python-based, scalable tool for genomics that enables large-scale genetic analyses on the cloud. Tutorials can be accessed through GitHub via iPython notebooks ([https://github.com/atgu/hgdp\\_tgp/tree/master/tutorials](https://github.com/atgu/hgdp_tgp/tree/master/tutorials)), and all underlying data sets are publicly available in requester-pays Google Cloud Platform buckets.

These tutorials cover various aspects of QC and analysis, including sample, variant, and genotype QC; visualizing distributions of QC statistics by metadata labels across diverse populations; filtering variants using LD, allele frequency, and missingness information; inferring relatedness; running PCA to infer ancestry; computing descriptive statistics including variant counts and coverage metrics; conducting population genetic analyses; and intersecting external data sets with HGDP + 1kGP as a reference panel to apply ancestry models and infer metadata labels (Fig. 6). For example, we intersected the publicly available Gambian Genome Variation Project (GGVP) sequenced to low coverage with the HGDP + 1kGP resource, trained a random forest on HGDP + 1kGP geographical/genetic region metadata labels, and then applied this model to the GGVP data to determine ancestry labels, which were all inferred to be AFR (Supplemental Fig. S17). When intersecting external data sets to apply ancestry labels, an important consideration is how many variants must overlap and how much missingness is tolerated to project external samples into the same PCA space as the reference panel and to assign



**Figure 6.** Overview of tutorials that use cloud computing to conduct common genetic data analyses. We have developed five iPython notebooks with tutorials for conducting many of the most common genetic analyses, including QC of sequencing data, relatedness inference and PCA, calculating statistics by population, analyzing genetic divergence, and applying ancestry analysis to a new data set using HGDP + 1kGP as a reference panel.

metadata labels given PCA shrinkage (Dey and Lee 2019). We find that <5% missingness is typically required to accurately assign ancestry labels (Supplemental Fig. S20; Supplemental Table S13). In addition to all these analyses, we anticipate that there will be additional uses of this resource not documented in these tutorials, such as for phasing and imputation. To facilitate these uses, we have phased the HGDP + 1kGP data set and released phased haplotypes that others can use to support phasing and imputation in their own data sets. We have also developed computational pipelines implemented in GWASpy that use these phased reference haplotypes, and tested them by applying phasing and imputation to diverse samples genotyped as part of other ongoing work.

## Discussion

The 1kGP and HGDP were landmark efforts to increase the unrestricted public availability of genomic data from a geographically and ancestrally diverse set of individuals. These resources have been widely used across research efforts for decades, including as reference panels for ancestry inference, phasing, imputation, genotype refinement, and investigations into population history and demography. However, these data sets have historically been discrete, leading to suboptimal intersections when a combined analysis of all samples is required.

The harmonized variant processing, quality control, and improved coverage of variants across the allele frequency spectrum in this jointly called resource will facilitate the improved study of diverse populations. The callset formally released here has already been used as a resource of global diversity in the gnomAD (Chen et al. 2024), the Pan-UK Biobank Project (Karczewski et al. 2024), the Global Biobank Meta-Analysis Initiative (GBMI) (Zhou et al. 2022), and the COVID-19 Host Genetics Initiative (COVID-19 Host Genetics Initiative 2021). A primary use of these data is as a global reference for PCA; SNV loadings are freely shared so that user cohorts can be aligned to the same PC space as this reference panel. In GBMI, harmonizing ancestry analysis with this resource served as a QC measure to ensure that ancestral groupings were applied consistently and that control for population stratification was performed adequately (Zhou et al. 2022). Building on this approach and given the critical need for greater diversity in genomic studies, sequencing centers can use this resource to build dashboards that continuously monitor the diversity of samples being sequenced in real time.

This callset is also phased for use as a haplotype resource, potentially providing higher phasing and imputation accuracy, particularly for underrepresented populations. Although resources such as the Haplotype Reference Consortium (HRC) and TOPMed Imputation Panel are already useful (McCarthy et al. 2016; Kowalski et al. 2019), they either provide individual-level data but lack diversity (HRC) or are very large with significant diversity but do not share individual-level data (TOPMed). This limits the application of new methods, such as those needed to support low-coverage sequencing, which is receiving growing interest as it is comparable in cost to many genotype arrays and is especially beneficial to underrepresented populations (Martin et al. 2021). Combinations of high-coverage exome and low-coverage genome sequencing are also of growing interest and could be uniquely supported by this resource. It is also being used for developing computational and analytical tools for genotype refinement and imputation, conducting data QC across varying depths of coverage, and evaluating technical biases. For example, we observed fewer SVs in the HGDP genomes than in 1kGP genomes among similar ancestry groups, which was primarily explained by PCR+ and PCR-free sequencing libraries.

Although this resource is more globally representative than most public data sets, certain geographic areas and ancestries are still underrepresented. HGDP, designed over two decades ago alongside the Human Genome Project, was one of the earliest studies of its kind and therefore faced some ethical controversies that remain relevant today (Greely 1999; Resnik 1999). For example, challenging issues of individual versus collective consent particularly among Amerindigenous communities parallel those currently being navigated by the *All of Us* Research Program; although criticisms have been raised, consensus has not been reached. HGDP responded to similar criticisms at the time and developed the model ethical protocol, whose principles still guide all major genetic research projects to date (Weiss et al. 1997). The risk and beneficence of ongoing massive-scale efforts such as *All of Us*, whose mission is “to accelerate health research and medical breakthroughs, enable individualized prevention, treatment, and care for all of us” must be wrestled with to minimize risks and ensure adequate representativeness such that all can benefit from genomic research and ultimately precision medicine.

As genetically diverse data sets continue to grow to massive scales, it will be invaluable for researchers to be equipped with tools and resources that facilitate scalable, efficient, and equitable

analysis, including allele frequency information, which informs variant deleteriousness (Karczewski et al. 2017). In the service of this goal, we concurrently release a series of detailed tutorials, designed to be easily accessible in iPython notebooks, showing many common genomic analytic techniques as implemented in the cloud-native Hail software framework, which allows for flexible, computationally efficient, and parallelized analysis of big data. The release of this resource on GRCh38, along with these detailed tutorials, reduce barriers acknowledged by clinical laboratories that have not yet migrated to the latest genome build, citing that they do not feel the benefits outweigh the time and monetary costs and/or that they lack sufficient personnel to shift (Lansdon et al. 2021). The tutorials also provide a code bank for researchers to conduct a variety of analyses, including conducting QC of WGS data, calculating variant and sample statistics within groups, analyzing population genetic variation, and applying ancestry labels from a reference panel to their own data. Overall, resources like this are essential for empowering genetic studies in diverse populations.

## Methods

### Genetic data sets

#### *HGDP*

HGDP genomes sequenced and described previously (Bergström et al. 2020) were downloaded from [http://ftp.1000genomes.ebi.ac.uk/vol1/ftp/data\\_collections/HGDP/](http://ftp.1000genomes.ebi.ac.uk/vol1/ftp/data_collections/HGDP/). Because the publicly available gVCFs were not the output of GATK HaplotypeCaller and were incompatible with joint calling, we reprocessed these genomes and conducted joint variant calling as part of gnomAD v3 (Chen et al. 2024). Most HGDP genomes were PCR-free (N = 760), but some included PCR before sequencing (N = 169). They were also sequenced at different times, for example, as part of the Simons Genome Diversity Project (SGDP, N = 120) or later at the Sanger Institute (N = 801). More details are available from the source studies (Mallick et al. 2016; Bergström et al. 2020).

#### *1kGP*

1kGP genomes have been sequenced as part of multiple efforts, first to mid-coverage as phase 3 of the 1kGP (The 1000 Genomes Project Consortium 2015) and more recently to high coverage ( $\geq 30\times$ ) at the New York Genome Center (NYGC) (Byrska-Bishop et al. 2022). We used the phase 3 1kGP genomes only for comparison to previous releases. The phase 3 1kGP data set was downloaded from <https://hgdownload.soe.ucsc.edu/gbdb/hg38/1000Genomes/>. The high-coverage 1kGP genomes sequenced at the NYGC were downloaded from [http://ftp.1000genomes.ebi.ac.uk/vol1/ftp/data\\_collections/1000G\\_2504\\_high\\_coverage/working/20201028\\_3202\\_raw\\_GT\\_with\\_annot/](http://ftp.1000genomes.ebi.ac.uk/vol1/ftp/data_collections/1000G_2504_high_coverage/working/20201028_3202_raw_GT_with_annot/), and were harmonized with HGDP genomes to generate the HGDP + 1kGP callset.

#### *HGSVC*

The HGSVC generated high-coverage long-read WGS data and genomic variant calls from 34 samples in the 1kGP project (Ebert et al. 2021). We have evaluated precision of the SV callset by comparing against the long-read SV calls using these 34 genomes. The long-read SV calls were collected from [http://ftp.1000genomes.ebi.ac.uk/vol1/ftp/data\\_collections/HGSVC2/release/v1.0/integrated\\_callset/](http://ftp.1000genomes.ebi.ac.uk/vol1/ftp/data_collections/HGSVC2/release/v1.0/integrated_callset/).

#### *gnomAD*

We compared the HGDP + 1kGP resource to gnomAD v3.1.2, which includes both HGDP and 1kGP high-coverage whole genomes, to quantify the extent of novel variation across the allele frequency spectrum contributed by these genomes. To generate allele counts and numbers in gnomAD that would be consistent with a fully nonoverlapping set of genomes, we subtracted allele counts and allele numbers in the gnomAD variant callset that were contributed specifically by the 1kGP and HGDP genomes, effectively creating a synthetic version of gnomAD without these genomes.

#### *GGVP*

As part of tutorials that show how we can intersect an external data set with HGDP + 1kGP and assign metadata labels, we intersected the HGDP + 1kGP genomes with 394 GGVP genomes that are publicly available through the IGSR ([http://ftp.1000genomes.ebi.ac.uk/vol1/ftp/data\\_collections/gambian\\_genome\\_variation\\_project/data](http://ftp.1000genomes.ebi.ac.uk/vol1/ftp/data_collections/gambian_genome_variation_project/data)), as described previously (Malaria Genomic Epidemiology Network 2019). We first downloaded GGVP CRAM files and used GATK HaplotypeCaller (Poplin et al. 2018) to run variant calling in GVCF mode on the 394 Gambian genome BAM files. After generating per-sample gVCFs, the single-sample gVCFs were combined into a multisample Hail sparse MatrixTable (MT) using Hail's `run_combiner()` function (<https://hail.is>). The GGVP sparse MT was then combined with the HGDP + 1kGP sparse MT using Hail's `vcf_combiner` (<https://hail.is>) to create a unique sparse MT. Note that the Hail sparse MT has since been replaced by the Hail VariantDataset (VDS).

#### Initial variant calling

The gnomAD Consortium aggregated and called variants across 153,030 individuals, which included the HGDP + 1kGP genomes as part of a larger project described previously (Karczewski et al. 2020; Chen et al. 2024). Briefly, using BWA-MEM 0.7.15.r1140, genomes were mapped to the GRCh38 version `hs38DH`, which includes decoy contigs and HLA genes (FASTA located at <https://console.cloud.google.com/storage/browser/gcp-public-data--broad-references/hg38/v0/>). Reads were then processed using GATK best practices (DePristo et al. 2011) to produce gVCFs, specifically GATK4 for all modules except HaplotypeCaller (GATK3.5). Variants from all samples in gnomAD were called jointly using the Hail combiner (Hail v0.2.62, <https://hail.is>) and converted to a VDS, which was then densified into a dense MT used for analysis. The gnomAD team then developed and used an updated pipeline of sample, variant, and genotype QC as described previously (Chen et al. 2024). We made minor modifications to these QC procedures for the extracted subset of HGDP + 1kGP, as described in the Sample and Variant QC section below.

#### Sample and variant QC

QC of samples was conducted according to procedures used in gnomAD, which include hard filtering with BAM-level metrics, sex inference, and ancestry inference described in greater depth previously (Supplemental Table S9; Chen et al. 2024). However, we modified some filtering procedures to relax some gnomAD sample QC filters new to v3 in especially diverse or unique genomes, specifically, the filters starting with "fail\_". These filters indicate whether samples are outliers in the number of variants after regressing out principal components, which can indicate a sample issue. However, we identified whole continental groups and populations that were removed solely owing to SNV and indel residual

filters, especially those that were most genetically unique (San, Mbuti, Biaka, Bougainville, Papuan Sepik, and Papuan Highlands) (Supplemental Fig. S19). Additional individuals from the LWK, Bantu Kenya, and Bantu South Africa populations were also removed solely on the basis of the fail\_n\_snp\_residual filter, so we removed the gnomAD “fail\_” filters that quantify variant count residuals after regressing out PCs.

The raw data set includes 189,381,961 variants (SNVs and indels) and 4150 samples. We further filtered samples and variants according to gnomAD filters. Specifically, we excluded samples that failed gnomAD’s sample QC hard filters and kept variants that were flagged as passing in the gnomAD QC pipeline (Supplemental Table S9). gnomAD applied an allele-specific version of GATK variant quality score recalibration (VQSR) trained on the following allele-specific features: FS, SOR, ReadPosRankSum, MQRankSum, and QC for SNPs and indels, as well as MQ for SNPs. In addition to filtering on VQSR PASS status and gnomAD sample QC filters, we also applied genotype QC filters using a function imported from gnomAD, as described previously (Chen et al. 2024); removed two contaminated samples; and removed monomorphic variants. This reduced the number of variants to 159,339,147 and removed 33 samples in total. As part of our QC process, we also updated HGDP population labels and some geographical coordinates as recommended previously (Bergström et al. 2020; Byrska-Bishop et al. 2022).

Following QC, we conducted global and subcontinental PCA within and among metadata geographical/genetic region labels (AFR, AMR, CSA, EAS, EUR, MID, and OCE) and identified 23 ancestry outliers that deviated substantially in PC space from others with the same metadata label along the first 10 PCs (these were identified visually when one to a few individuals defined the entire PC). After removing those individuals, 153,894,851 SNVs and indels in 4094 individuals remained.

We calculated per-sample QC metrics such as the number of SNVs and call rate using the sample\_qc() method in Hail. Because singletons are especially sensitive to variation in sample size per population, which is substantial across HGDP and 1kGP, we compared singleton counts by randomly down-sampling to four unrelated samples, the minimum number of unrelated individuals per population, and then removed monomorphic variants. We computed coverage data using the BAM metrics field from gnomAD. We then calculated the mean of these metrics per individual within a population using Hail’s hl.agg.stats() method (<https://hail.is>).

## Relatedness

We computed relatedness among 4117 samples using the KING-robust algorithm (Manichaikul et al. 2010) implemented in Hail (<https://hail.is>). Specifically, we considered SNVs with MAF between 0.05 and 0.95 and missingness < 0.1% and performed LD pruning within a 500-kb window, restricting to variants with  $r^2 < 0.1$ . Then, for sample-pairs with kinship greater than 0.05, we restricted to a maximally independent set of unrelated individuals. This resulted in 200,403 SNVs and partitioned the data set into 3419 unrelates and 698 relates for PCA analysis.

## PCA and ADMIXTURE

We computed 20 PCs across global populations as well as within each continental ancestry group according to the “Genetic.region” project metadata label harmonized across HGDP and 1kGP as shown in Supplemental Table S1. After computing relatedness on the QCed, filtered, and LD pruned data set as described above, we ran PCA both globally and within metadata labels (AFR, AMR, CSA, EAS, EUR, MID, and OCE) in unrelated in-

dividuals using Hail’s hwe\_normalized\_pca() function (<https://hail.is>). We then projected related individuals into that PC space using a pc\_project() function used in gnomAD and implemented in Hail. PC plots were then generated using R (R Core Team 2022).

The filtered data set was also used to run ADMIXTURE (Alexander et al. 2009) across populations and geographical regions for values of  $K=2$  through  $K=10$  using the command “admixture {bed\_file} {1–10}”. We conducted 10 runs for each value of  $K$  and performed a fivefold cross-validation error for the first run of each  $K$  by adding “--cv=5” to the command. Pong (Behr et al. 2016) was used to visualize ADMIXTURE results. We selected  $K=6$  as the best-fit value of  $K$  based on a reduction in the rate of change of our fivefold cross-validation, as seen in Supplemental Figure S8. The best-fit value of  $K$  shows a low cross-validation error compared with other  $K$  values.

## $F_{ST}$ versus geographical distance

For each population pair that had an  $F_{ST}$  value, we calculated geographical distance using the haversine method (geosphere package in R) (<https://CRAN.R-project.org/package=geosphere>) with the earth’s radius of 6371 km. This method of calculation did not account for human migration patterns so we additionally recalculated the pairwise geographical distances by incorporating five waypoints—Istanbul, Cairo, Phnom Penh, Anadyr, and Prince Rupert—and set predetermined paths that go through certain waypoints depending on the geographical/genetic region to which the population pairs belong (Ramachandran et al. 2005). For example, to calculate the geographical distance between AMR and AFR populations, the path would go through Prince Rupert, Anadyr, and Cairo. In this example, the total distance between the pair would be the sum of the distances between the starting population and the first waypoint, pairs of waypoints in order (i.e., first to second and then second to third), and the third waypoint and the destination population. The distance between points was calculated using the haversine. We compared correlations between genetic divergence and geographical distance with and without waypoints using Pearson’s correlation and Mantel tests.

## Structural variants

### Initial SV discovery and pruning

We applied GATK-SV (Collins et al. 2020), a public repository at GitHub (<https://github.com/broadinstitute/gatk-sv>), to integrate and genotype SVs from the HGDP and 1kGP samples. Briefly, the HGDP samples were split into four equivalent sized batches, each consisting of about 190 samples, based on their initial cohort, PCR status, sex chromosome ploidy, and sequencing depth of the libraries (Supplemental Fig. S3). Raw initial SVs were detected per sample by Manta (Chen et al. 2016), Wham (Kronenberg et al. 2015), MELT (Gardner et al. 2017), cnMOPs (Klambauer et al. 2012), and GATK-gCNV (see the “GatherSampleEvidence” and “GatherBatchEvidence” functions of GATK-SV) (Babadi et al. 2023) and then were clustered across each batch (see the “ClusterBatch” function of GATK-SV) and filtered through an initial random forest machine learning model to remove potential false-positive SVs (see the “GenerateBatchMetrics” and “FilterBatch” functions of GATK-SV). The same methods were applied for SV discovery from the 1kGP samples, with details described previously (Byrska-Bishop et al. 2022). We then concatenated SVs from both the HGDP and 1kGP samples to form a nonredundant set of unique SV sites (see the “MergeBatchSites” function of GATK-SV) and genotyped them across all HGDP + 1kGP samples (see the “GenotypeBatch” function of GATK-SV). Overlapping SVs that indicate potential

complex formats of SVs were clustered and resolved into complex events (see the “MakeCohortVcf” function of GATK-SV). We observed mosaicism resulting from gain or loss of X and Y Chromosomes for several samples (Supplemental Table S5), likely owing to a cell line artifact from passaging. Although mosaic loss of the Y Chromosome is the most common form of clonal mosaicism (Thompson et al. 2019), the noncanonical sex chromosome ploidies observed are not unique to these samples and have been previously observed in other data sets (Collins et al. 2020; Byrska-Bishop et al. 2022).

### SV refinement and annotation

A series of refinements have been applied to improve the precision of SV calls while maintaining high sensitivity. First, two machine learning models have been developed and applied to prune false-positive SVs. A lightGBM model (Byrska-Bishop et al. 2022) has been trained on the nine 1kGP samples that have been deep sequenced with long-read WGS data by the HGSC (Chaisson et al. 2019; Ebert et al. 2021), and applied to all SVs except for large biallelic CNVs (>5 kb). Meanwhile, a minGQ model (Collins et al. 2020) has been trained using the inheritance information among trio families to filter biallelic CNVs that are  $\geq 5$  kb. Genomes that failed the machine learning models were assigned a null genotype, and the proportion of null genotypes among all samples was calculated as a “no call rate” (NCR) score. SV sites that have a  $\geq 10\%$  NCR were labeled as low-quality variants and removed from further analyses. Then, we examined the distribution of SVs per genome to identify potential outlier samples that carry significantly more SVs than average, and also compared the frequency of SVs across each batch to identify SVs that showed significant bias (i.e., batch effects). The resulting SV callset was annotated with their frequency by their ancestry.

### Data set comparisons

All of the comparison data sets used GRCh38 as their reference genome except for phase 3 1kGP, which was on hg19. Phase 3 1kGP phased haplotypes on GRCh38 were provided by the International Genome Sample Resource (IGSR). The comparison data sets consisted of phase 3 of the 1kGP (The 1000 Genomes Project Consortium 2015), gnomAD v3.1.2 (Chen et al. 2024), high-coverage HGDP whole-genome sequences (Bergström et al. 2020), and the NYGC 1kGP (Byrska-Bishop et al. 2022). All of these data sets were sequenced to high coverage ( $\geq 30\times$ ) aside from the phase 3 1kGP, which is an integrated callset composed of array, exome, and whole-genome data with the whole genomes sequenced to  $4\times$ – $8\times$  coverage. The NYGC 1kGP data set includes all of the original 2504 samples from the phase 3 1kGP as well as an additional 698 related samples. The NYGC data set and the Bergström HGDP data set were the only two data sets that contained multiallelic variants, and multiallelic variants were split before conducting the comparison. The synthetic gnomAD data set was generated by filtering to samples only included in the gnomAD release, excluding samples that were in HGDP + 1kGP but not in gnomAD. The allele count, allele number, and MAF were then calculated on this synthetic gnomAD data set to obtain those metrics for samples that were only in gnomAD. The variant annotations for the X and Y Chromosomes for the NYGC 1kGP and the Bergström HGDP data sets differed from those of the autosomes. Because this prevented them from being read into Hail, we removed the X and Y Chromosomes from all data sets before conducting the comparison. In addition, each of the comparison data sets was filtered using the INFO section of their respective VCFs as imputed by the `hail import_vcf()` method (<https://hail.is>).

For Bergström HGDP, those filters were excess heterozygosity (ExcHet) and LOW\_VQSLOD, which removed 4,278,530 total variants. NYGC 1kGP has the VQSRTrancheINDEL99.00to100.00 and VQSRTrancheSNP99.80to100.00 filters, which removed 10,909,291 variants. Phase 3 1kGP did not have any filters listed in the info field. The gnomAD data set had 115,034,289 total variants removed by the following filtering: allele count is zero after filtering out low-confidence genotypes (ACO), failed allele-specific variant quality score recalibration (AS\_VQSR), and inbreeding coefficient ( $\text{InbreedingCoeff} < -0.3$ ). Counts for the number of variants removed by comparison data set filters can be found in Supplemental Table S10. Variant comparison was performed using MAF, which was calculated for each comparison data set apart from gnomAD using Hail’s `variant_qc()` method (<https://hail.is>) and taking the minimum value of the allele frequency array. A MAF table was created for each of the comparison data sets containing counts of the number of variants in each MAF bin. To generate these tables, we first removed any missing variants. We then created a flag, `in_comparison`, which was true if a variant in the comparison data set at [locus, alleles] was also in the HGDP + 1kGP data set. The HGDP + 1kGP data set used for every comparison aside from gnomAD was the post-QC version. This version excludes PCA outliers and has gnomAD sample, variant, and genotype QC applied, as described in the Sample and Variant QC section. Because of the synthetic version of the gnomAD data set used for comparison, the post-QC HGDP + 1kGP comparison data set included PCA outliers, as some of them may have been in gnomAD. MAF bins were created containing the counts of variants from HGDP + 1kGP in each of the MAF categories. Once the bins were generated, we used the `in_comparison` flag to see which alleles in the data set were shared and in HGDP + 1kGP only. In the comparison data set, we created a flag, `not_in_hgdp_1kg`, which was true if the variants in the comparison data set were not present in HGDP + 1kGP. We appended the count of true values for that flag onto the table as the 0% MAF bin to denote variants that were only in the comparison data set and therefore have a MAF of 0% in HGDP + 1kGP. The final bar plot was generated from the data in the MAF tables using R. To investigate why some variants were missing in the HGDP + 1kGP data set compared with the comprising data sets, we looked at pre- and post-QC counts of SNPs and indels for these variants, finding that there are fewer variants missing from HGDP + 1kGP after QC filters were applied to the comparison data set (Supplemental Table S11). For all of the data sets aside from NYGC 1kGP, we used the included annotations of SNV or indel to calculate the numbers. NYGC 1kGP did not have allele type information, so we manually classified indel and SNVs based on length of alleles. The phase 3 1kGP phased data set did not contain any indels. For the gnomAD data set, there were additionally variants labeled as complex, which we excluded from these counts. Alleles labeled as deletion and insertion were combined to create one indel label. To calculate the SNV and indel counts, we took the intersection of variants that were in the comparison data set but not in the HGDP + 1kGP data set, as with the main comparison described above, additionally counting variants in pre- and post-QC data sets. We did this four times to obtain all combinations of pairwise pre- and post-QC comparisons and then counted the number of variants in the pre- and post-QC HGDP + 1kGP data set.

### Phased haplotypes and imputation accuracy evaluation

To create a haplotype reference panel that can be used for phasing or imputation, we first constructed a pedigree file with familial relationships between first-degree relatives in the QCed harmonized data set to improve phasing accuracy. We ran additional relatedness checks using the PC-Relate algorithm (Conomos et al. 2016)

implemented in Hail (<https://hail.is>). The PC-Relate results were filtered to sample pairs with a kinship statistic between 0.248 and 0.252. We then cross-checked the filtered PC-Relate results with the publicly available NYGC 1kGP pedigree file (Byrsk-Bishop et al. 2022) and found that all parent–child relationships estimated by PC-Relate are reported in the 1kGP pedigree file. Of 602 previously reported trios, nine samples failed QC (six owing to gnomAD sample QC, three owing to ancestry outliers). In total, we therefore included 599 families, six of which were duos and the remaining 593 of which were trios. To investigate if there are any possible duplicate samples/monozygotic twins within or across projects, we filtered the PC-Relate results to sample pairs with kin statistic > 0.35 and found five pairs of samples, of which three have been reported before (Mountain and Ramakrishnan 2005). To verify if the five sample-pairs are indeed possible duplicates and/or monozygotic twins, we ran Identity-By-Descent (ref) as implemented in Hail (<https://hail.is>) and found that each sample-pair shared almost all alleles (IBS2). One sample from each of the five pairs was filtered out from the data set.

As recommended by the SHAPEIT5 documentation (Hofmeister et al. 2023), we applied additional QC filters to the data set before phasing the haplotypes, keeping only variants with (1)  $HWE \geq 1 \times 10^{-30}$ , (2)  $F_{MISSING} \leq 0.1$ , and (3)  $ExcHet \geq 0.5$  &  $ExcHet \leq 1.5$ . Common variants ( $MAF \geq 0.1\%$ ) were phased in large chunks of 20-cM length using the `phase_common` program in SHAPEIT5 (Hofmeister et al. 2023). The common variants chunks were then ligated together to create a haplotype scaffold containing partially phased haplotypes for each autosome (Chr 1–22). Using the partially phased scaffolds as input, rare variants ( $MAF < 0.1\%$ ) were then phased in small chunks of 4-cM length using the `phase_rare` program in SHAPEIT5 (Hofmeister et al. 2023). Lastly, the fully phased chunks were then concatenated into chromosomes and indexed using BCFtools (Danecek et al. 2021). To improve the quality of phasing, pedigree information was used when phasing both common and rare variants.

To evaluate phasing accuracy, we used the “switch” utility of SHAPEIT5 (Hofmeister et al. 2023) to compute switch error rate, treating the HGSC2 genomes as “truth” and statistically phased genomes as a test set. To evaluate imputation accuracy, we used a filtering and down-sampling strategy to simulate GWAS arrays and 93 whole genomes sequenced at various depths from previously sequenced high-coverage whole genomes from the Neuropsychiatric Genetics of African Populations-Psychosis (NeuroGAP-Psychosis) study, as previously (Martin et al. 2021). Briefly, these genomes were from participants in Ethiopia, Kenya, South Africa, and Uganda. Ethical and safety considerations are being taken across multiple levels, as described in greater detail previously (Stevenson et al. 2019). The GWAS arrays we evaluated included the widely used Illumina Global Screening Array (GSA) designed to increase scalability and improve imputation accuracy in European populations, the Multi-Ethnic Genotyping Array (MEGA) designed to improve performance across globally diverse populations, and the H3Africa array specialized for higher genetic diversity and smaller haplotype blocks in African genomes. We previously down-sampled reads randomly to an average of 0.5×, 1×, 2×, and 4× using the `GATK DownsampleSam` module (Poplin et al. 2018), which retains a random subset of reads and their mate pairs deterministically. More details on the down-sampling strategy are previously described (Martin et al. 2021).

### Software availability

Code is available at GitHub ([https://github.com/atgu/hgdp\\_tgp](https://github.com/atgu/hgdp_tgp)) and as [Supplemental Code](#).

### Data access

All data from this study are freely available and described in more detail at <https://gnomad.broadinstitute.org/news/2020-10-gnomad-v3-1-new-content-methods-annotations-and-data-availability/#the-gnomad-hgdp-and-1000-genomes-callset>.

The gnomAD HGDP+1kGP callset can be found at <https://gnomad.broadinstitute.org/downloads#v3-hgdp-1kg>. Note that files ending with `.bgz` can be viewed using `zcat` on the command line.

Computational tutorials for conducting many of the most common genetic analyses including those implemented on this data set are available at GitHub ([https://github.com/atgu/hgdp\\_tgp/tree/master/tutorials](https://github.com/atgu/hgdp_tgp/tree/master/tutorials)).

Data sets used in the tutorials are located at <https://gnomad.broadinstitute.org/downloads#v3-hgdp-1kg-tutorials> ([Supplemental Documents](#)).

Phased haplotypes are available as BCFs on Google Cloud at the following path: `gs://gcp-public-data-gnomad/resources/hgdp_1kg/phased_haplotypes_v2/` ([Supplemental Documents](#)).

More details can be found at <https://docs.google.com/document/d/1LCx74zREJajwtN0MzonSv1QB3UahVtgTfjkepxAQ/Uxc/edit>.

Data sets found on the Downloads page of the gnomAD browser are released on the Google Cloud Platform, Amazon Web Services, and Microsoft Azure. Instructions on how to download them can be found at <https://gnomad.broadinstitute.org/downloads>.

### Competing interest statement

M.J.D. is a founder of Maze Therapeutics. B.M.N. is a member of the scientific advisory board at Deep Genomics and Neumora. K.J.K. is a consultant for Tome Biosciences, AlloDx, and Vor Biosciences and is a member of the scientific advisory board of Nurture Genomics. All other authors declare no competing interests.

### Acknowledgments

This work was supported by funding from the National Institutes of Health (National Institute of Mental Health [NIMH] K99/ROOMH117229 to A.R.M., National Institute of Dental and Craniofacial Research R01DE031261 to H.B. and A.R.M., NIMH R01MH115957 to M.E.T., NIMH R37MH107649 to B.M.N.) and by the Novo Nordisk Foundation (NNF21SA0072102 to B.M.N. and K.J.K.). This project was also supported by funding from BroadIgnite, the Broad Next Generation Fund, and a Merkin Fellowship Award.

*Author contributions:* Z.K., M.T.Y., L.L.N., H.A.K., and A.R.M. performed analyses. J.K.G., M.W.W., K.R.C., G.T., and K.J.K. processed these data with gnomAD. X.Z., S.P.H., M.A.W., M.E.T., and H.B. called structural variants. M.J.D., E.G.A., and A.R.M. conceptualized the project. A.R.M. provided funding. Z.K., M.T.Y., K.J.K., E.G.A., and A.R.M. wrote the paper with input from all coauthors.

### References

- The 1000 Genomes Project Consortium. 2012. An integrated map of genetic variation from 1,092 human genomes. *Nature* **491**: 56–65. doi:10.1038/nature11632
- The 1000 Genomes Project Consortium. 2015. A global reference for human genetic variation. *Nature* **526**: 68–74. doi:10.1038/nature15393

- Alexander DH, Novembre J, Lange K. 2009. Fast model-based estimation of ancestry in unrelated individuals. *Genome Res* **19**: 1655–1664. doi:10.1101/gr.094052.109
- Babadi M, Fu JM, Lee SK, Smirnov AN, Gauthier LD, Walker M, Benjamin DI, Zhao X, Karczewski KJ, Wong I, et al. 2023. GATK-gCNV enables the discovery of rare copy number variants from exome sequencing data. *Nat Genet* **55**: 1589–1597. doi:10.1038/s41588-023-01449-0
- Behr AA, Liu KZ, Liu-Fang G, Nakka P, Ramachandran S. 2016. Pong: fast analysis and visualization of latent clusters in population genetic data. *Bioinformatics* **32**: 2817–2823. doi:10.1093/bioinformatics/btw327
- Bergström A, McCarthy SA, Hui R, Almarri MA, Ayub Q, Danecek P, Chen Y, Felkel S, Hallast P, Kamm J, et al. 2020. Insights into human genetic variation and population history from 929 diverse genomes. *Science* **367**: eaay5012. doi:10.1126/science.aay5012
- Byrska-Bishop M, Evani US, Zhao X, Basile AO, Abel HJ, Regier AA, Corvelo A, Clarke WE, Musunuri R, Nagulapalli K, et al. 2022. High-coverage whole-genome sequencing of the expanded 1000 Genomes Project Cohort including 602 trios. *Cell* **185**: 3426–3440.e19. doi:10.1016/j.cell.2022.08.004
- Cavalli-Sforza LL. 2005. The Human Genome Diversity Project: past, present and future. *Nat Rev Genet* **6**: 333–340. doi:10.1038/nrg1579
- Cavalli-Sforza LL, Wilson AC, Cantor CR, Cook-Deegan RM, King MC. 1991. Call for a worldwide survey of human genetic diversity: a vanishing opportunity for the human genome project. *Genomics* **11**: 490–491. doi:10.1016/0888-7543(91)90169-F
- Chaisson MJP, Sanders AD, Zhao X, Malhotra A, Porubsky D, Rausch T, Gardner EJ, Rodriguez OL, Guo L, Collins RL, et al. 2019. Multi-platform discovery of haplotype-resolved structural variation in human genomes. *Nat Commun* **10**: 1784. doi:10.1038/s41467-018-08148-z
- Chang CC, Chow CC, Tellier LC, Vattikuti S, Purcell SM, Lee JJ. 2015. Second-generation PLINK: rising to the challenge of larger and richer datasets. *GigaScience* **4**: 7. doi:10.1186/s13742-015-0047-8
- Chen X, Schulz-Trieglaff O, Shaw R, Barnes B, Schlesinger F, Källberg M, Cox AJ, Kruglyak S, Saunders CT. 2016. Manta: rapid detection of structural variants and indels for germline and cancer sequencing applications. *Bioinformatics* **32**: 1220–1222. doi:10.1093/bioinformatics/btv710
- Chen S, Francioli LC, Goodrich JK, Collins RL, Kanai M, Wang Q, Alfoldi J, Watts NA, Vittal C, Gauthier LD, et al. 2024. A genomic mutational constraint map using variation in 76,156 human genomes. *Nature* **625**: 92–100. doi:10.1038/s41586-023-06045-0
- Collins RL, Brand H, Karczewski KJ, Zhao X, Alfoldi J, Francioli LC, Khera AV, Lowther C, Gauthier LD, Wang H, et al. 2020. A structural variation reference for medical and population genetics. *Nature* **581**: 444–451. doi:10.1038/s41586-020-2287-8
- Conomos MP, Reiner AP, Weir BS, Thornton TA. 2016. Model-free estimation of recent genetic relatedness. *Am J Hum Genet* **98**: 127–148. doi:10.1016/j.ajhg.2015.11.022
- COVID-19 Host Genetics Initiative. 2021. Mapping the human genetic architecture of COVID-19. *Nature* **600**: 472–477. doi:10.1038/s41586-021-03767-x
- Danecek P, Bonfield JK, Liddle J, Marshall J, Ohan V, Pollard MO, Whitwham A, Keane T, McCarthy SA, Davies RM, et al. 2021. Twelve years of SAMtools and BCFtools. *GigaScience* **10**: giab008. doi:10.1093/gigascience/giab008
- DePristo MA, Banks E, Poplin R, Garimella KV, Maguire JR, Hartl C, Philippakis AA, del Angel G, Rivas MA, Hanna M, et al. 2011. A framework for variation discovery and genotyping using next-generation DNA sequencing data. *Nat Genet* **43**: 491–498. doi:10.1038/ng.806
- Dey R, Lee S. 2019. Asymptotic properties of principal component analysis and shrinkage-bias adjustment under the generalized spiked population model. *J Multivar Anal* **173**: 145–164. doi:10.1016/j.jmva.2019.02.007
- Ebert P, Audano PA, Zhu Q, Rodriguez-Martin B, Porubsky D, Bonder MJ, Sulovari A, Ebler J, Zhou W, Serra Mari R, et al. 2021. Haplotype-resolved diverse human genomes and integrated analysis of structural variation. *Science* **372**: eabf7117. doi:10.1126/science.abf7117
- Gardner EJ, Lam VK, Harris DN, Chuang NT, Scott EC, Pittard WS, Mills RE, 1000 Genomes Project Consortium, Devine SE. 2017. The Mobile Element Locator Tool (MELT): population-scale mobile element discovery and biology. *Genome Res* **27**: 1916–1929. doi:10.1101/gr.218032.116
- Greely HT. 1999. The overlooked ethics of the human genome diversity project. *Politics Life Sci* **18**: 297–299. doi:10.1017/S073093840002150X
- Hofmeister RJ, Ribeiro DM, Rubinacci S, Delaneau O. 2023. Accurate rare variant phasing of whole-genome and whole-exome sequencing data in the UK Biobank. *Nat Genet* **55**: 1243–1249. doi:10.1038/s41588-023-01415-w
- Howie B, Fuchsberger C, Stephens M, Marchini J, Abecasis GR. 2012. Fast and accurate genotype imputation in genome-wide association studies through pre-phasing. *Nat Genet* **44**: 955–959. doi:10.1038/ng.2354
- Karczewski KJ, Weisburd B, Thomas B, Solomonson M, Ruderfer DM, Kavanagh D, Hamamy T, Lek M, Samocha KE, Cummings BB, et al. 2017. The ExAC browser: displaying reference data information from over 60 000 exomes. *Nucleic Acids Res* **45**: D840–D845. doi:10.1093/nar/gkw971
- Karczewski KJ, Francioli LC, Tiao G, Cummings BB, Alfoldi J, Wang Q, Collins RL, Laricchia KM, Ganna A, Birnbaum DP, et al. 2020. The mutational constraint spectrum quantified from variation in 141,456 humans. *Nature* **581**: 434–443. doi:10.1038/s41586-020-2308-7
- Karczewski KJ, Gupta R, Kanai M, Lu W, Tsuo K, Wang Y, Walters RK, Turley P, Callier S, Baya N, et al. 2024. Pan-UK Biobank GWAS improves discovery, analysis of genetic architecture, and resolution into ancestry-enriched effects. medRxiv doi:10.1101/2024.03.13.24303864
- Klambauer G, Schwarzbauer K, Mayr A, Clevert D-A, Mitterecker A, Bodenhofer U, Hochreiter S. 2012. Cn.MOPS: mixture of poisson for discovering copy number variations in next-generation sequencing data with a low false discovery rate. *Nucleic Acids Res* **40**: e69. doi:10.1093/nar/gks003
- Kowalski MH, Qian H, Hou Z, Rosen JD, Tapia AL, Shan Y, Jain D, Argos M, Arnett DK, Avery C, et al. 2019. Use of >100,000 NHLBI Trans-Omics for Precision Medicine (TOPMed) Consortium whole genome sequences improves imputation quality and detection of rare variant associations in admixed African and Hispanic/Latino populations. *PLoS Genet* **15**: e1008500. doi:10.1371/journal.pgen.1008500
- Kronenberg ZN, Osborne EJ, Cone KR, Kennedy BJ, Domyan ET, Shapiro MD, Elde NC, Yandell M. 2015. Wham: identifying structural variants of biological consequence. *PLoS Comput Biol* **11**: e1004572. doi:10.1371/journal.pcbi.1004572
- Lam M, Awasthi S, Watson HJ, Goldstein J, Panagiotaropoulou G, Trubetskoy V, Karlsson R, Frei O, Fan C-C, De Witte W, et al. 2020. RICOPIII: rapid imputation for CONsortia PipeLine. *Bioinformatics* **36**: 930–933. doi:10.1093/bioinformatics/btz633
- Lansdon LA, Cadieux-Dion M, Yoo B, Miller N, Cohen ASA, Zellmer L, Zhang L, Farrow EG, Thiffault I, Repnikova EA, et al. 2021. Factors affecting migration to GRCh38 in laboratories performing clinical next-generation sequencing. *J Mol Diagn* **23**: 651–657. doi:10.1016/j.jmoldx.2021.02.003
- Li JZ, Absher DM, Tang H, Southwick AM, Casto AM, Ramachandran S, Cann HM, Barsh GS, Feldman M, Cavalli-Sforza LL, et al. 2008. Worldwide human relationships inferred from genome-wide patterns of variation. *Science* **319**: 1100–1104. doi:10.1126/science.1153717
- Malaria Genomic Epidemiology Network. 2019. Insights into malaria susceptibility using genome-wide data on 17,000 individuals from Africa, Asia and Oceania. *Nat Commun* **10**: 5732. doi:10.1038/s41467-019-13480-z
- Mallick S, Li H, Lipson M, Mathieson I, Gymrek M, Racimo F, Zhao M, Chennagiri N, Nordenfelt S, Tandon A, et al. 2016. The Simons Genome Diversity Project: 300 genomes from 142 diverse populations. *Nature* **538**: 201–206. doi:10.1038/nature18964
- Manichaikul A, Mychaleckyj JC, Rich SS, Daly K, Sale M, Chen W-M. 2010. Robust relationship inference in genome-wide association studies. *Bioinformatics* **26**: 2867–2873. doi:10.1093/bioinformatics/btq559
- Maples BK, Gravel S, Kenny EE, Bustamante CD. 2013. RFMix: a discriminative modeling approach for rapid and robust local-ancestry inference. *Am J Hum Genet* **93**: 278–288. doi:10.1016/j.ajhg.2013.06.020
- Marcus JH, Novembre J. 2017. Visualizing the geography of genetic variants. *Bioinformatics* **33**: 594–595. doi:10.1093/bioinformatics/btw643
- Martin AR, Atkinson EG, Chapman SB, Stevenson A, Stroud RE, Abebe T, Akena D, Alemayehu M, Ashaba FK, Atwoli L, et al. 2021. Low-coverage sequencing cost-effectively detects known and novel variation in under-represented populations. *Am J Hum Genet* **108**: 656–668. doi:10.1016/j.ajhg.2021.03.012
- McCarthy S, Das S, Kretzschmar W, Delaneau O, Wood AR, Teumer A, Kang HM, Fuchsberger C, Danecek P, Sharp K, et al. 2016. A reference panel of 64,976 haplotypes for genotype imputation. *Nat Genet* **48**: 1279–1283. doi:10.1038/ng.3643
- Mountain JL, Ramakrishnan U. 2005. Impact of human population history on distributions of individual-level genetic distance. *Hum Genomics* **2**: 4–19. doi:10.1186/1479-7364-2-1-4
- Poplin R, Ruano-Rubio V, DePristo MA, Fennell TJ, Carneiro MO, Van der Auwera GA, Kling DE, Gauthier LD, Levy-Moonshine A, Roazen D, et al. 2018. Scaling accurate genetic variant discovery to tens of thousands of samples. bioRxiv doi:10.1101/201178
- Ramachandran S, Deshpande O, Roseman CC, Rosenberg NA, Feldman MW, Cavalli-Sforza LL. 2005. Support from the relationship of genetic and geographic distance in human populations for a serial founder effect originating in Africa. *Proc Natl Acad Sci* **102**: 15942–15947. doi:10.1073/pnas.0507611102
- R Core Team. 2022. *R: a language and environment for statistical computing*. R Foundation for Statistical Computing, Vienna. <https://www.R-project.org/>.

- Resnik DB. 1999. The Human Genome Diversity Project: ethical problems and solutions. *Politics Life Sci* **18**: 15–23. doi:10.1017/S0730938400023510
- Rosenberg NA, Pritchard JK, Weber JL, Cann HM, Kidd KK, Zhivotovskiy LA, Feldman MW. 2002. Genetic structure of human populations. *Science* **298**: 2381–2385. doi:10.1126/science.1078311
- Rubinacci S, Delaneau O, Marchini J. 2020. Genotype imputation using the positional Burrows Wheeler transform. *PLoS Genet* **16**: e1009049. doi:10.1371/journal.pgen.1009049
- Rubinacci S, Ribeiro DM, Hofmeister RJ, Delaneau O. 2021. Efficient phasing and imputation of low-coverage sequencing data using large reference panels. *Nat Genet* **53**: 120–126. doi:10.1038/s41588-020-00756-0
- Stevenson A, Akena D, Stroud RE, Atwoli L, Campbell MM, Chibnik LB, Kwobah E, Kariuki SM, Martin AR, de Menil V, et al. 2019. Neuropsychiatric genetics of African populations-psychosis (NeuroGAP-psychosis): a case-control study protocol and GWAS in Ethiopia, Kenya, South Africa and Uganda. *BMJ Open* **9**: e025469. doi:10.1136/bmjopen-2018-025469
- Sudmant PH, Rausch T, Gardner EJ, Handsaker RE, Abyzov A, Huddleston J, Zhang Y, Ye K, Jun G, Fritz MH-Y, et al. 2015. An integrated map of structural variation in 2,504 human genomes. *Nature* **526**: 75–81. doi:10.1038/nature15394
- Taliun D, Harris DN, Kessler MD, Carlson J, Szpiech ZA, Torres R, Taliun SAG, Corvelo A, Gogarten SM, Kang HM, et al. 2021. Sequencing of 53,831 diverse genomes from the NHLBI TOPMed program. *Nature* **590**: 290–299. doi:10.1038/s41586-021-03205-y
- Thompson DJ, Genovese G, Halvardson J, Ulirsch JC, Wright DJ, Terao C, Davidsson OB, Day FR, Sulem P, Jiang Y, et al. 2019. Genetic predisposition to mosaic Y chromosome loss in blood. *Nature* **575**: 652–657. doi:10.1038/s41586-019-1765-3
- Weiss KM, Cavalli-Sforza LL, Dunston GM, Feldman M, Greely HT, Kidd KK, King M, Moore JA, Szathmari E, Twinn CM, et al. 1997. Proposed model ethical protocol for collecting DNA samples. *Houst Law Rev* **33**: 1431–1474.
- Zhao X, Collins RL, Lee W-P, Weber AM, Jun Y, Zhu Q, Weisburd B, Huang Y, Audano PA, Wang H, et al. 2021. Expectations and blind spots for structural variation detection from long-read assemblies and short-read genome sequencing technologies. *Am J Hum Genet* **108**: 919–928. doi:10.1016/j.ajhg.2021.03.014
- Zhou W, Kanai M, Wu K-HH, Rasheed H, Tsuo K, Hirbo JB, Wang Y, Bhattacharya A, Zhao H, Namba S, et al. 2022. Global Biobank Meta-Analysis Initiative: powering genetic discovery across human disease. *Cell Genom* **2**: 100192. doi:10.1016/j.xgen.2022.100192

Received August 10, 2023; accepted in revised form May 7, 2024.