



Noncoding regions underpin avian bill shape diversification at macroevolutionary scales

Leeban Yusuf, Matthew C. Heatley, Joseph P.G. Palmer, et al.

Genome Res. published online April 8, 2020

Access the most recent version at doi:[10.1101/gr.255752.119](https://doi.org/10.1101/gr.255752.119)

P<P Published online April 8, 2020 in advance of the print journal.

Creative Commons License

This article is distributed exclusively by Cold Spring Harbor Laboratory Press for the first six months after the full-issue publication date (see <http://genome.cshlp.org/site/misc/terms.xhtml>). After six months, it is available under a Creative Commons License (Attribution-NonCommercial 4.0 International), as described at <http://creativecommons.org/licenses/by-nc/4.0/>.

Email Alerting Service

Receive free email alerts when new articles cite this article - sign up in the box at the top right corner of the article or [click here](#).



To subscribe to *Genome Research* go to:

<https://genome.cshlp.org/subscriptions>

Research

Noncoding regions underpin avian bill shape diversification at macroevolutionary scales

Leeban Yusuf,^{1,2} Matthew C. Heatley,^{1,3} Joseph P.G. Palmer,^{1,4} Henry J. Barton,^{1,5} Christopher R. Cooney,¹ and Toni I. Gossmann^{1,6}

¹Department of Animal and Plant Sciences, University of Sheffield, Sheffield S10 2TN, United Kingdom; ²Centre for Biological Diversity, School of Biology, University of St. Andrews, Fife, KY16 9TF, United Kingdom; ³Division of Plant and Crop Sciences, School of Biosciences, University of Nottingham, Sutton Bonington LE12 5RD, United Kingdom; ⁴School of Biological Sciences, Royal Holloway University of London, Egham, Surrey, TW20 0EX, United Kingdom; ⁵Organismal and Evolutionary Biology Research Programme, Viikinkaari 9 (PL 56), University of Helsinki, Helsinki, FI-00014, Finland; ⁶Department of Animal Behaviour, Bielefeld University, Bielefeld, DE-33501, Germany

Recent progress has been made in identifying genomic regions implicated in trait evolution on a microevolutionary scale in many species, but whether these are relevant over macroevolutionary time remains unclear. Here, we directly address this fundamental question using bird beak shape, a key evolutionary innovation linked to patterns of resource use, divergence, and speciation, as a model trait. We integrate class-wide geometric-morphometric analyses with evolutionary sequence analyses of 10,322 protein-coding genes as well as 229,001 genomic regions spanning 72 species. We identify 1434 protein-coding genes and 39,806 noncoding regions for which molecular rates were significantly related to rates of bill shape evolution. We show that homologs of the identified protein-coding genes as well as genes in close proximity to the identified noncoding regions are involved in craniofacial embryo development in mammals. They are associated with embryonic stem cell pathways, including BMP and Wnt signaling, both of which have repeatedly been implicated in the morphological development of avian beaks. This suggests that identifying genotype-phenotype association on a genome-wide scale over macroevolutionary time is feasible. Although the coding and noncoding gene sets are associated with similar pathways, the actual genes are highly distinct, with significantly reduced overlap between them and bill-related phenotype associations specific to noncoding loci. Evidence for signatures of recent diversifying selection on our identified noncoding loci in Darwin finch populations further suggests that regulatory rather than coding changes are major drivers of morphological diversification over macroevolutionary times.

[Supplemental material is available for this article.]

Disentangling the interplay between macroevolutionary trends and microevolutionary processes is fundamental to understand patterns of diversification over time. Key innovations, defined as traits that allow species to interact with environments in novel ways (Stroud and Losos 2016), are thought to play an important role determining macroevolutionary patterns of diversification, by allowing lineages to access and exploit new, previously inaccessible resources (Hunter 1998). In birds, evolutionary transitions in life-history traits and the emergence of *de novo* innovations occurred rapidly alongside species and niche diversification (Balanoff et al. 2013; Xu et al. 2014). Understanding whether convergent molecular mechanisms underlie independent trait evolution in different organisms is a key question in biology (Manceau et al. 2010; Rosenblum et al. 2014; Lamichhaney et al. 2019). A variety of approaches to link molecular and phenotypic changes have been developed (O'Connor and Mundy 2009, 2013; Mayrose and Otto 2011; Levy Karin et al. 2017; Sharma et al. 2018; Hu et al. 2019), but these are generally restricted to relatively simple discretized phenotypic information (Prudent et al. 2016) and may not be easily applicable to more complex phenotypes on a genome-wide scale (Lartillot 2013).

A pertinent example of an important innovation is the evolution of the beak in modern birds. The avian bill is closely associated with species' dietary and foraging niches, and changes in beak shape are implicated in driving population divergence and speciation (Grant and Grant 1996; Bhullar et al. 2016). However, despite considerable effort, the genetic and developmental underpinnings of avian beak shape is still poorly understood, particularly at macroevolutionary scales. In the wake of the Cretaceous-Paleogene (K-Pg) mass extinction event, beak shape has been hypothesized to have evolved through a series of ontogenic stages (Bhullar et al. 2012, 2015), although the exact mechanism is yet to be established. Beak shape is comprised of separate morphological and developmental parameters, each of which is likely to be regulated by independent sets of transcriptional factors (Mallarino et al. 2011; Bhullar et al. 2015). Understanding how each of these morphological parameters evolved, how they are modulated, and how changes in such factors affect patterns of beak shape disparity across modern birds represents a significant unresolved challenge.

Several candidate genes linked to bird beak shape have been identified within populations or between recently diverged

Corresponding authors: c.cooney@sheffield.ac.uk, toni.gossmann@gmail.com

Article published online before print. Article, supplemental material, and publication date are at <http://www.genome.org/cgi/doi/10.1101/gr.255752.119>.

© 2020 Yusuf et al. This article is distributed exclusively by Cold Spring Harbor Laboratory Press for the first six months after the full-issue publication date (see <http://genome.cshlp.org/site/misc/terms.html>). After six months, it is available under a Creative Commons License (Attribution-NonCommercial 4.0 International), as described at <http://creativecommons.org/licenses/by-nc/4.0/>.

species. Among the earliest studies to identify genes implicated in beak shape evolution are comparative transcriptomic analyses in Darwin's finches (Abzhanov et al. 2004, 2006) that found *BMP4*, a gene involved in the regulation of beak depth and width, and *CALM1* (calmodulin), a gene putatively involved in beak length. Both genes were later identified to be partially implicated in beak shape development (Mallarino et al. 2011). In addition, *ALX1*, a transcription factor involved in craniofacial development, and *HMG2*, a gene associated with increases in beak size, were also identified in Darwin's finches (Lamichhaney et al. 2015, 2018). In European populations of great tits, a collagen gene, *COL4A5*, putatively linked to beak length variation, was found to be under selection (Bosse et al. 2017). Collectively, these findings illustrate (1) a complex genetic architecture for beak shape, (2) that genes implicated in beak shape may evolve under strong, detectable selective pressures in populations, and (3) that such genes are likely to be different across different avian taxonomic groups.

However, despite these clear predictions, no previous attempts have been made to identify genes that repeatedly play a role in beak shape evolution over broad evolutionary timescales. Although previous studies have explored the genetic basis of other key avian traits (e.g., song, flight), such studies are typically targeted toward candidate genes or incorporated clade-specific features (Whitney et al. 2014; Wirthlin et al. 2014; Machado et al. 2016; Sackton et al. 2019). Thus, relatively little is currently known about the genetics underpinning the macroevolution of beak shape. The current lack of insight connecting species or clade-specific candidate genes to large-scale evolutionary time may be explained by two main arguments. First, there is a growing consensus that large-effect genes (Fisher 1930) may not be as important for the evolution of complex traits as small-effect genes (Hill 2010; Rockman 2012; Boyle et al. 2017). This model of adaptation is well-supported by growing population genomic evidence, but does not explain candidate genes implicated in beak shape evolution with seemingly large effects on beak morphology and speciation. Second, genes under strong long-term selective pressures may simply be difficult to detect because of confounding factors that obscure evolutionary signals. For example, selective pressures and demography vary over time, making the detection of clear signals of adaptive evolution and other evolutionary forces using sequence divergence approaches challenging. A third possibility is that the role of convergent evolution (Manceau et al. 2010; Stern 2013; Rosenblum et al. 2014; Lamichhaney et al. 2019) is limited if different genes are involved in morphological changes in different parts of the phylogeny.

Here, we use large-scale comparative genomic and phylogenetically reconstructed geometric-morphometric data to identify candidate loci that relate to macroevolutionary shifts in trait evolution. Specifically, we ask whether rates of bird beak shape evolution are explained by loci that experience long-term, repeated shifts in molecular rates across distantly related avian taxa. To accomplish this, we designed an approach to detect loci persistently implicated in beak shape evolution across lineages by integrating morphological data into substitution rate models in a phylogenetic framework. We analyzed protein-coding genes as well as noncoding conserved regions from 72 bird species and combined them with morphological information from all major avian orders and families spanning >97% of avian genera (Cooney et al. 2017). Using this approach, we were able to link genetic and morphological diversification on a macroevolutionary scale.

Results

Previous work has identified several genes and genomic regions that are under selection as likely species-specific drivers of bird beak shape evolution (Supplemental Table S1). To identify genes that play a role in beak shape evolution beyond a lineage or species-specific scale, we performed sequence divergence analyses on protein-coding genes and avian-specific highly conserved elements, possibly regulatory, regions.

Detecting protein-coding genes repeatedly implicated in beak shape evolution

To test whether protein-coding changes of the same protein are repeatedly implicated with beak shape morphological change across taxa, we designed an approach that incorporates estimates of morphological trait evolution into a branch model of sequence diversification. Specifically, we estimated sequence divergence using the ratio of nonsynonymous substitutions to synonymous substitutions (d_N/d_S), which provides an indication of selection acting at the protein level. Our model assumes that the rate of molecular evolution (d_N/d_S) varies between predetermined types of branches, but not between sites in a protein, which is a reasonable restriction for computational reasons (Yang 1998; Yang and Nielsen 1998). We obtained estimates of rates of beak shape evolution based on geometric-morphometric data for all branches and grouped them into ranked bins according to their respective rates of beak shape evolution (Fig. 1). If protein-coding genes drive morphological change, we hypothesized a positive correlation between ranked bins, in which bins increased in rates of estimated phenotypic evolution incrementally, and estimates of d_N/d_S . For the 10,238 genes included in our analysis, we set up a branch model assuming different d_N/d_S for each bin. Accompanying this, for each binned model, we estimated d_N/d_S in a null model assuming no difference in d_N/d_S between bins. A comparison between the binned model and the null model using a likelihood-ratio test will reveal whether there is significant variation in the rate of protein change across our grouped branches.

We found that 1434 ($\approx 14\%$) genes had significant variation in their d_N/d_S values across the grouped branches after correcting for multiple testing (e.g., significantly different likelihoods between the two models, $FDR < 0.05$). To determine putative functions of these genes, we performed phenotype ontology and pathway enrichment analyses using WebGestalt (Wang et al. 2017). Among the most enriched pathways are *Wnt Signaling pathway* and *ESC pluripotency pathways* (Fig. 2A), both of which have been implicated in beak morphological development (Abzhanov et al. 2004; Wu et al. 2004; Merrill et al. 2008; Brugmann et al. 2010). Among the top phenotypic ontologies we find several ontology descriptions associated with skin as well as ectopic calcification and hydrocephalus (Table 1). We also used STRING (Szklarczyk et al. 2015), a comprehensive database combining different evidence channels for protein-protein interaction networks and functional enrichment analysis, to identify protein interaction partners of three proteins that have been previously identified as being associated with bird beak shape morphology independent of size effects (*ALX1*, *BMP4*, and *CALM1*) (Supplemental Table S1). *ALX1*, in contrast to *BMP4* and *CALM1*, shows only two predicted interaction partners, whereas the other two proteins are part of huge interaction networks (Supplemental Fig. S1). Altogether we identified 467 protein interaction partners across the three proteins and tested whether there is an enrichment of these in our

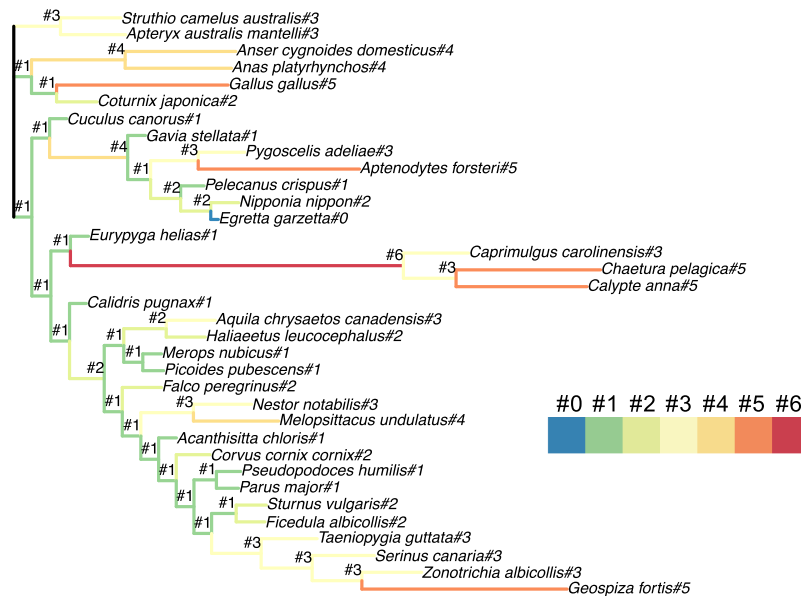


Figure 1. An example tree illustrating the grouping of branches according to their beak shape morphological rates. The marked topology was then used as input for branch model in PAML (codeml for coding DNA and baseml for noncoding DNA). The maximum number of bins is eight for the coding gene set and 16 for the avian-specific highly conserved elements (ASHCE) set. Here, as an example, a binning with seven bins (#0 to #6) is shown.

data set of 1434 genes, which is indeed the case (χ^2 -test, $df = 1$, $P = 0.002$) (Table 2).

We hypothesized a positive correlation between rates of molecular change and beak shape change; however, after correcting for multiple testing, no significant correlations were observed. This might be caused by limited power, for example, resulting from short gene length or branch length, but generally suggests limited evidence for a simple relationship between the rate of molecular change in protein-coding genes and morphological change.

Detecting conserved noncoding regions implicated in beak shape evolution

To identify noncoding, possibly regulatory, regions that may be associated with beak shape morphological change over macroevolutionary time, we analyzed genomic regions based on avian conserved elements obtained from the chicken genome (Seki et al. 2017). Specifically, we obtained multiple sequence alignments of conserved regions from whole-genome alignments comprising 72 bird genomes (Supplemental Table S2) and grouped branches in up to 16 different categories using a k -means binning approach on branch-specific morphological beak shape rate change (Cooney et al. 2017), a similar binning approach as for protein-coding genes. Simulations show that 16 bins capture rate heterogeneity among branches very well at computationally feasible costs (Supplemental Fig. S2).

We successfully processed and analyzed 229,001 conserved elements, of which 39,806 ($\approx 17.4\%$) showed significant variation in their substitution rates after correcting for multiple testing (χ^2 -test, $FDR < 0.05$). Because we were interested to link potentially *cis*-regulatory elements to their target genes, we restricted our analysis to conserved elements within or in close proximity to genes. Although the location of *cis*-regulatory elements is not

fixed, they frequently occur in introns (Wittkopp and Kalay 2012) or close to the transcription start site, such as promoters and promoter-proximal elements (Butler and Kadonaga 2002; Andersson and Sandelin 2020). We extracted 884 genes that were overlapping or within 200 bp distance (Piechota et al. 2010) of the identified regions in the chicken genome. To determine putative functions of these genes, we performed phenotype ontology and pathway enrichment analyses using WebGestalt (Wang et al. 2017). Among the most enriched pathways are *Ectoderm Differentiation*, *Mesodermal Commitment Pathway*, *Focal adhesion*, and the *ESC pluripotency pathways* (Fig. 2B). The latter pathway set was also identified for the protein-coding genes and represents an ensemble of pathways, including BMP and Wnt signaling, necessary for regulating pluripotency of embryonic stem cells (Okita and Yamanaka 2006). Phenotypic associations included “Abnormality of mouth shape and nasal bridge,” “cleft upper lip,” and “nyctalopia” (Table 1).

We find that the 884 protein-coding genes in *cis* to the identified genomic regions are overrepresented in a set of 511 genes involved in early craniofacial development in mice ($P = 0.012$, χ^2 -test, $df = 1$) (Table 3; Brunskill et al. 2014). To investigate whether there is any indicator for a biological meaningful relationship of the rate of molecular change and the rate of morphological change, we focused on 2644 of 39,806 genomic regions ($\approx 1.2\%$ of all genomic regions) that individually showed a significant correlation (Kendall τ , $P < 0.05$) between beak shape rates and substitution rate. We find that the overrepresentation for mice craniofacial genes is driven by a subset of 163 genes nearby the 2644 regions ($P = 2.5 \times 10^{-5}$, χ^2 -test), but not the 721 remaining genes ($P = 0.58$, χ^2 -test, $df = 1$). This suggests that the rate of molecular change in noncoding regions may be correlated to the rate of beak shape change (Table 3).

These previous analyses are most likely to identify the role of *cis*-regulatory elements because they focus on genes nearby to noncoding regions. Hence, we conducted a second strategy to gain further insights into the role of the identified noncoding regions as possible *trans*-acting elements. For this, we searched for short enriched motifs in the set of 39,806 genomic regions using DREME (Bailey 2011) and focused on the top 20 enriched motifs (Supplemental Table S3). These motifs are potentially part of genomic regions that are targets of transcription factors.

To identify potential proteins binding to these motifs, we used TOMTOM (Gupta et al. 2007) and obtained 145 potential annotated binding proteins, including GSC and SMAD proteins, both previously identified to be associated with beak shape morphological evolution (Parsons and Albertson 2009; Lamichhaney et al. 2015). To discern potential functions related to craniofacial features, we conducted a phenotype enrichment analysis and identified “Abnormal lip morphology” as significant phenotype association and “lip and craniofacial abnormalities” as disease-associated ontologies using a disease annotation database (Table 1).

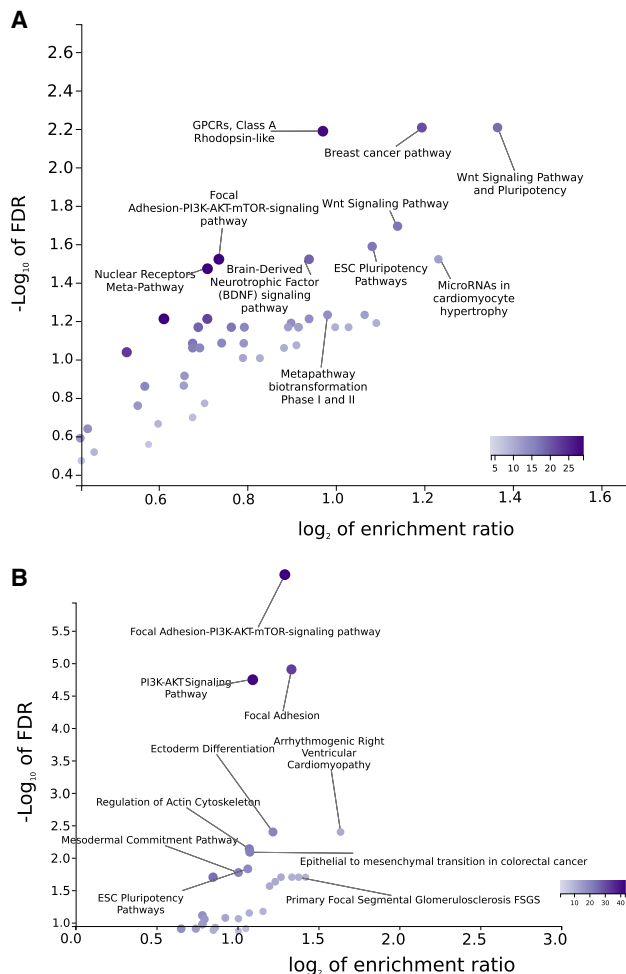


Figure 2. Pathway enrichment analysis of 1434 protein-coding genes (A) and 848 genes (B) nearby avian conserved genomic regions that show heterogeneity of substitution rates across branches that are grouped according to their beak shape morphological change rates. False discovery rate (FDR) and enrichment ratio stem from the pathway enrichment analysis in WebGestalt (Wang et al. 2017) using all analyzed genes and human annotations, because these are the most comprehensive annotation databases to date. The color of the dots is denoted in the color scale and proportional to the category size, as defined by WebGestalt.

Genetic differentiation of the identified noncoding loci in Darwin's finches

To test whether the identified noncoding loci may play a role in shaping beak morphology in a recent diversification, we obtained polymorphism data from Darwin's finch populations that either show a pointy or blunt beak phenotype (Lamichhaney et al. 2015). Using this data set we find that our identified regions are characterized by patterns of linked selection that differ to a genomic control. Relative to genomic control regions, we find a stronger genetic differentiation between blunt and pointy phenotype populations (Fig. 3A), as well as a higher overall genetic diversity at our identified loci (Fig. 3B).

Genes underlying evolutionary hotspots of beak shape divergence

Major evolutionary changes in beak shape may be concentrated within specific time periods and/or lineages (Cooney et al.

2017), and it is plausible that genes underlying these changes will show corresponding signatures of rapid evolution associated with such instances of “quantum evolution” (Simpson 1944). We tested this prediction by identifying branches with the fastest-evolving rates of beak shape evolution according to trait evolution estimates derived from our morphological data. We selected three branches in our phylogeny with the most divergent beak shape evolution and refer to these branches as “hotspots” (Supplemental Fig. S3). We conducted branch model tests (Yang 1998; Yang et al. 1998) for each of the three rapidly evolving branches.

After accounting for multiple testing, we detected 36 genes with a signature of rapid evolution ($d_N/d_S > 1$) (Fig. 4). Although $d_N/d_S > 1$ is indicative of rapid evolution, a formal significance test (versus a model with a fixed $d_N/d_S = 1$ for the tested branch) suggests only for nine of our 36 identified genes a significant elevation of d_N/d_S above one, indicative of positive selection (Fig. 4). We identified *BGLAP*, a gene encoding osteocalcin, a highly abundant, noncollagenous protein found in embryonic bone and involved in bone formation (Ducy et al. 1996; Raymond et al. 1999). Furthermore, we identified *SOX5*, a gene reported to have an assistive role in regulating embryonic cartilage formation (Lefebvre et al. 1998). In chickens, the expression of *SOX5* and a duplication in the first intronic region of the gene is associated with the Pea comb phenotype (Wright et al. 2009).

Discussion

We developed a phylogenetic approach to identify genomic loci underlying the evolution of beak shape across macroevolutionary time and investigated genetic changes at coding and noncoding DNA across 72 bird species. Specifically, we asked whether loci that are repeatedly implicated in beak shape evolution across the bird phylogeny can be detected. By binning branches according to estimated rates of beak shape evolution, on the basis that phenotypic evolution is informative of genetic changes, we estimated rates of protein evolution across more than 10,000 genes, as well as rates of DNA substitutions for more than 200,000 avian-specific conserved regions, in a phylogenetic context.

Protein-coding genes associated with beak shape evolution across birds

For protein-coding genes, we found significant variation in d_N/d_S between binned branches in $\approx 14\%$ of the genes tested, but we did not find a significant correlation between rates of phenotypic evolution and protein evolution for any gene. The binned model for coding DNA described in this study is not a formal test for positive selection; however, a positive correlation between evolutionary rates and morphological genes could be indicative of repeated adaptive evolution of the same gene. Although we do not find evidence for this, some loci may have experienced shifts in d_N/d_S ratios repeatedly across distantly related branches in association with beak shape morphological change. This relation may be explained by a number of different evolutionary forces, potentially acting independently or in tandem.

An association between d_N/d_S and morphological changes may not be associated with adaptive events but could also be explained by varying levels of genetic drift or purifying selection. For instance, relaxed purifying selection often occurs in response to environmental changes that weaken the effect of selection previously required to maintain a trait (Lahti et al. 2009).

Table 1. Top phenotype ontology associations identified from the identified genomic loci, coding genes, genes nearby noncoding regions, and possible DNA-binding proteins

Human phenotype ID	Description	Set size	Expected	Ratio	P-value
Coding gene set (1434 genes)					
HP:0100585	Telangiectasia of the skin	40	6.1374	2.444	0.00046478
HP:0001651	Dextrocardia	47	7.2114	2.3574	0.00032269
HP:0031654	Abnormal pulmonary valve physiology	59	9.0526	2.2093	0.00026667
HP:0100242	Sarcoma	65	9.9732	2.1056	0.00039948
HP:0000987	Atypical scarring of skin	73	11.201	2.0534	0.00032109
HP:0010766	Ectopic calcification	108	16.571	1.8104	0.0004917
HP:0000238	Hydrocephalus	157	24.089	1.6605	0.00042549
Noncoding gene set (884 genes nearby noncoding regions)					
HP:0011338	Abnormality of mouth shape	59	10.143	1.7746	0.007355
HP:0010766	Ectopic calcification	73	12.55	1.6733	0.0082376
HP:0100242	Sarcoma	53	9.1115	1.6463	0.028012
HP:0001417	X-linked inheritance	92	15.816	1.6439	0.0043902
HP:0010576	Intracranial cystic lesion	57	9.7992	1.6328	0.025469
HP:0000204	Cleft upper lip	61	10.487	1.6211	0.023132
HP:0000662	Nyctalopia	59	10.143	1.5774	0.034783
HP:0000422	Abnormality of the nasal bridge	283	48.652	1.2538	0.020982
Motif binding proteins (145 genes)					
PA443736 ^a	Cleft lip	33	3.9165	2.5533	0.0026025
PA446836 ^a	Craniofacial abnormalities	51	6.0527	2.313	0.00093839
PA443223 ^a	Congenital abnormalities	87	10.325	2.0338	0.00023481
HP:0000159	Abnormal lip morphology	65	11.762	1.4453	0.035219

^aMarked ontology terms are based on disease annotation database approach (GLAD4U).

Furthermore, environments and therefore selective pressures are unlikely to remain stable over long evolutionary times. So far, only a few analyses have found experimental evidence of fluctuating selection acting on polymorphisms (Lynch 1987; O'Hara 2005). However, at a broader scale, models estimating the effects of fluctuating selection suggest a contribution to divergence similar to signatures of adaptive evolution (Huerta-Sanchez et al. 2008; Gossmann et al. 2014). Depending on the strength of fluctuating selection, or other types of varying selection intensities, it may account for the lack of strong, positive correlation coefficients reported in this study.

Although we might generally expect that morphological change in beak shape is positively correlated with d_N/d_S , an alternative scenario can explain a negative correlation. Adaptive mutations, because of their functional importance, are expected to experience strong purifying selection after their fixation (Kimura 1983). Functionally important genes typically show signals of

strong purifying selection ($d_N/d_S \ll 1$) and this is not conducive to a pattern of repeated increase in d_N/d_S over distantly related branches. Instead, a selective sweep would be followed by sustained reduction in d_N/d_S through a prolonged period of intense purifying selection. We also did not identify genes with significant negative correlations. We want to stress that further exploration of how adaptation occurs over macroevolutionary time and the signals of selection left by ancient adaptive events is necessary to be able to fully elucidate our results. It may well be that our assumption of a positive correlation with beak shape rate does not hold because the role of convergent evolution is less pervasive, or that a rate analysis at coding sites does not have enough power as a measure of repeated directional positive selection.

The effect of varying effective population size and life-history traits

Following the K-Pg extinction, modern birds experienced drastic reductions in body size, and with it, an increase in shorter generation time (this phenomenon is termed the Lilliput effect) (Berv and Field 2018). Critically, reductions in body size and generation time have likely resulted in an increased N_e , and alongside it, an increase in the efficacy of selection (Kimura 1983; Gossmann et al. 2010; Lanfear et al. 2014). This gradual decrease in body size and generation time, and with it, an increase in the neutral substitution rate, could account for an incremental decrease in d_N/d_S over time. So far, a number of studies have reported that a relationship exists between body mass and rates of molecular evolution in birds, with varying results (Weber et al. 2014; Nabholz et al. 2016; Botero-Castro et al. 2017; Figuet et al. 2017). In apparent contradiction with expectations of the neutral theory, several studies found that a decrease in body mass in birds did not result in decreased d_N/d_S estimates (Lanfear et al. 2010; Nabholz et al. 2013; Weber et al. 2014; Bolívar et al. 2019). In fact, they found a weakly negative relationship between body mass and d_N/d_S , although similar studies report the opposite trend: d_N/d_S in birds is positively

Table 2. Enrichment test for proteins identified as d_N/d_S heterogeneous/homogeneous and interaction partners of BMP4/ALX1/CALM1

Protein category	d_N/d_S heterogeneity	d_N/d_S homogeneous	Ratio
BMP4/ALX1/CALM1 and interaction partners	53	203	0.26
Other proteins	1381	8601	0.16
P-value (χ^2 2 × 2 test, df = 1)			0.002

Values of d_N/d_S were retrieved for groups of branches with similar beak shape morphological rates. The common interactome of BMP4/ALX1/CALM1 consists of 467 proteins, of which 256 were included in our gene analysis. Altogether, we identified 53 proteins of the BMP4/ALX1/CALM1 interactome that showed significant variation in their d_N/d_S values (heterogeneous d_N/d_S).

Table 3. Enrichment tests for genes nearby genomic regions that show significant heterogeneity in their substitution rates (heterogeneity was tested for grouped branches according to beak shape morphological change rates) versus a set of 511 known genes involved in craniofacial development in mice

Gene category	Subset	Total	In craniofacial gene set	Not in craniofacial gene set	Ratio
Genes near identified genomic regions		884	48	836	0.057*
	Positively correlated	163	17	146	0.116***
	Not positively correlated	721	31	690	0.045 ^{n.s.}
Genes near nonidentified genomic regions		5572	201	5371	0.037

Gene sets were further subset according to whether there was a significant correlation between morphological change of beak shape and substitution rates. P -values were obtained using a $\chi^2 2 \times 2$ test. (*) $P < 0.05$; (***) $P < 0.001$; (n.s.) not significant.

correlated with body mass (Botero-Castro et al. 2017; Figuet et al. 2017). Indeed, mean and median correlation coefficient of d_N/d_S with beak shape rate change is 0.047 and 0.048, respectively (significantly different from zero, $P \ll 0.05$, one sample t -test, $n = 1434$), for the 1434 genes with significant heterogeneity in d_N/d_S , possibly suggesting a covariation of beak shape change with other traits, such as body size.

Fluctuations in effective population size (N_e), which are not taken into consideration by models of protein evolution, may affect interpretations of d_N/d_S . For example, fluctuations in N_e may

cause the fixation of neutral or slightly deleterious mutations—in this case, this would mean the interpretation that $d_N/d_S > 1$ is indicative of positive or diversifying selection may be erroneous. Strong shifts in d_N/d_S may be driven by sudden changes in population size or genuine positive selection and might obscure or oppose incremental increases in d_N/d_S across bins (Bielawski et al. 2016; Jones et al. 2016). In our model, however, the effects of population size changes are partially negated by coestimating parameters across branches. Unless specifically accounted for, substitution rate models do not consider the effect of non-equilibrium processes that could affect d_N/d_S estimates (Matsumoto et al. 2015). For example, GC-biased gene conversion (described as the preferential conversion of “A” or “T” alleles to “G” or “C” during recombination induced repair) has been shown to significantly affect estimates of substitution rates, in particular at synonymous sites in birds (Galtier et al. 2009; Weber et al. 2014; Bolívar et al. 2016; Botero-Castro et al. 2017; Corcoran et al. 2017; Bolívar et al. 2019). However, although differences in the extent of GC-biased gene conversion across genes are known, much less is known about its variation over time, and incorporating such biases into large-scale phylogenetic frameworks is far from trivial (Gossmann et al. 2018).

Noncoding regions associated with beak shape morphology evolution across birds

Branch-specific substitution rates of more than 39,000 avian-specific conserved regions are significantly associated with beak shape rates. We find more than 850 genes that are nearby these regions, possibly *cis*-regulatory factors, that show significant enrichment for craniofacial phenotypes in humans and mice. Unlike for protein-coding regions we were unable to correct our substitution rate estimates for the effect of varying mutation rates (e.g., there is no counterpart for d_S as for coding regions). Owing to special features of the avian karyotype, such as a stable recombinational and mutational landscape, it seems unlikely that variation in mutation rate can contribute to the patterns observed here. However, although inter-chromosomal rearrangements are rare in birds, intra-chromosomal changes are more common and could lead to sudden changes in local mutation rates (Gossmann et al. 2018). Additionally, we restricted our analysis to noncoding regions that are specific to birds or highly divergent relative to vertebrates (Seki et al. 2017). Whether anciently conserved elements, such as vertebrate specific regulatory regions (Lowe et al. 2015), may play a role in avian beak shape remains an open question. Equally, because the noncoding regions were identified based on the chicken genome, we lack those conserved regions that are absent from the chicken genome but present in other parts of the phylogeny.

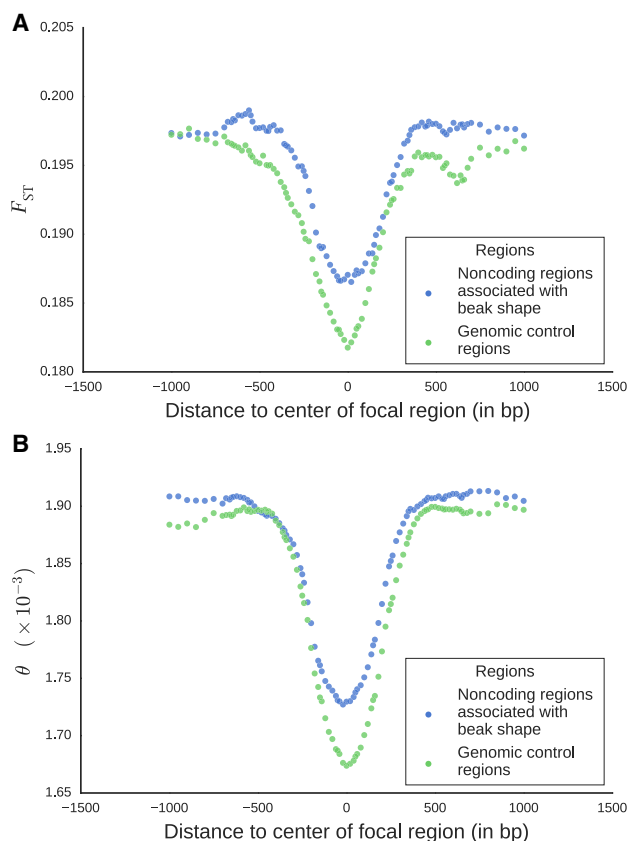


Figure 3. Identified noncoding genomic regions in a microevolutionary context in populations of Darwin’s finches. (A) Measures for genetic differentiation among populations, F_{ST} , show contrasting genetic diversity in Darwin finch populations with blunt and pointy beaks, respectively. The identified loci associated with beak shape evolution over macroevolutionary time and nearby regions show a stronger differentiation relative to similar loci that are not associated with beak shape. (B) Total genetic diversity is higher for beak shape–associated loci and nearby regions.

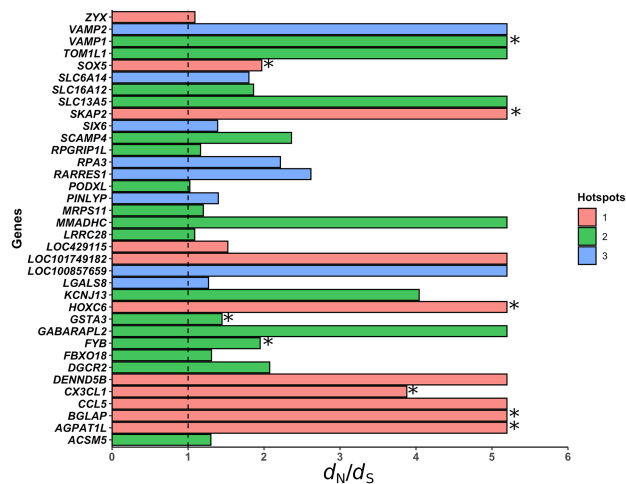


Figure 4. Elevated rates of protein evolution (d_N/d_S) associated with hotspots of beak shape morphological diversification. Shown are d_N/d_S values for selected hotspot branches for 36 genes detected with $d_N/d_S > 1$. The black dotted line formally indicates neutrality ($d_N/d_S = 1$) and asterisks indicate genes for which the branch-specific estimate d_N/d_S is significantly different from 1 (e.g., indicative of positive selection). Hotspots 1, 2, and 3 refer to the branches of the tree with the fastest, second fastest, and third fastest rates of beak shape morphological change, respectively (Supplemental Fig. S3). For visualization purposes are large d_N/d_S values truncated at 5.2 (the estimate for *SKAP2*).

More than 2000 of the identified regions showed a significant correlation with binned rates of beak shape change, and genes nearby these regions significantly overlap with genes involved in craniofacial development in mice (Table 3). The association of sequence divergence and trait divergence, along with a strong phenotypic enrichment, might suggest that the accumulation of neutral mutations at noncoding sites may play a pronounced role in bird beak diversification. This is because in our applied model we cannot distinguish between the action of selection and the accumulation of drift through fixations of new mutations (e.g., background variation in mutation rate). Hence, disentangling differences in the evolutionary pressures these regions experienced remains a major future challenge.

Some of the noncoding conserved genomic regions we identified may not be in physical proximity to a gene, for example, many enhancers can be megabases away from the gene they regulate. Potentially, this could result from missing annotation for the *Gallus gallus* genome or the fact that the genomic regions are *trans*-acting factors. Identifying the mechanisms underlying *trans*-acting factors is however very difficult to approach *in vitro* as well as *in silico*, and our approach to detect the role of *trans*-acting factors over macroevolutionary time is novel. We opted for an *in silico* approach through motif enrichment and harvested vertebrate DNA-binding protein databases to identify DNA-binding proteins involved in beak diversification that go beyond a *cis*-acting role. We identified 145 possible DNA-binding proteins using WebGestalt, including known transcription factors shown to be involved in beak development that might be associated with beak shape diversification.

Although there is some overlap between the identified protein-coding gene set and the noncoding gene set (Fig. 5A), this is substantially less than expected by chance ($P < 0.005$, χ^2 -test, $df = 1$, protein-coding genes versus genes near noncoding regions) (Fig. 5B). Indeed, based on the pathway and phenotype associations

we note that the identified ontologies are different between the two data sets (Table 1). Although genes nearby noncoding regions are associated with facial and anatomical features, such as mouth shape, cleft, and nasal abnormalities, the protein-coding phenotypes are mainly associated with dermal features. This suggests that the underlying evolutionary mechanisms of protein-coding genes and noncoding, potentially regulatory, regions may be rather distinct in beak morphology evolution. However, as a common pattern, we identified that the ESC pathways are enriched in the coding and noncoding gene sets (Fig. 5C). This further supports the notion that fundamental cellular pathways, such as BMP and Wnt signaling pathways, play a crucial role in the development of bird beaks and that this signal is detectable at a macroevolutionary scale.

A pressing question remains as to whether these long-term associations are also reflected in selection at the microevolutionary level (Shultz and Sackton 2019). To test this, we obtained data from Darwin's finch populations that differ in their beak shape morphology (Lamichhaney et al. 2015). Our identified regions are characterized by pattern of linked selection that differ from genomic control regions with stronger genetic differentiation between blunt and pointy phenotype populations (Fig. 3A), as well as a higher overall genetic diversity at our identified loci, suggestive of diversifying or partially relaxed purifying selection (Fig. 3B). The signatures of selection are embedded in a genetic environment that shows local reduction of diversity owing to strong purifying selection at these regions, typical of highly conserved regions. Sophisticated analyses of pinpointed genomic loci will be pivotal for future studies to disentangle the selective forces at these sites.

Rapid genetic evolution in hotspots of beak shape evolution

In a second approach we focused on the findings of previous studies: Beak shape changes are driven by different genes in specific branches. Applying this rationale, we identified rapidly evolving lineages from comprehensive trait evolution analyses specifically focused on beak shape evolution (Cooney et al. 2017) and tested genes at these branches for accelerated rates of corresponding protein evolution. We identified 36 protein-coding genes with branch-specific signals of rapid evolution, with nine of them showing evidence for positive selection. These genes are putatively linked to branch and lineage-specific changes in beak morphology.

The most plausible candidates were detected in an internal branch leading to the evolution of the Strisores, a clade estimated to have diverged over 60 million years ago, comprised of swifts, hummingbirds, nightjars, and their allies (Hackett et al. 2008; Prum et al. 2015; Cooney et al. 2017). As well as distinctively short beaks evolving in swifts and nightjars, the divergence of hummingbirds is characterized by significant changes in beak shape, body size, and metabolism. This is supported by reported accelerated rates of evolutionary change in multiple cranial modules in Strisores (Felice and Goswami 2017). Together, these changes encapsulate adaptive shifts that have occurred in the Strisores clade.

An important candidate that may explain some of these changes is *BGLAP*, a gene encoding for osteocalcin, a ubiquitous protein found in bones and whose presence is critical for normal bone development (Ducy et al. 1996). Instead of direct involvement in bone production, osteocalcin regulates insulin expression and excretion, thereby regulating energy expenditure in muscle tissue, development of bone tissue, and insulin sensitivity (Lee et al. 2007; Karsenty and Ferron 2012; Mera et al. 2016). Equally,

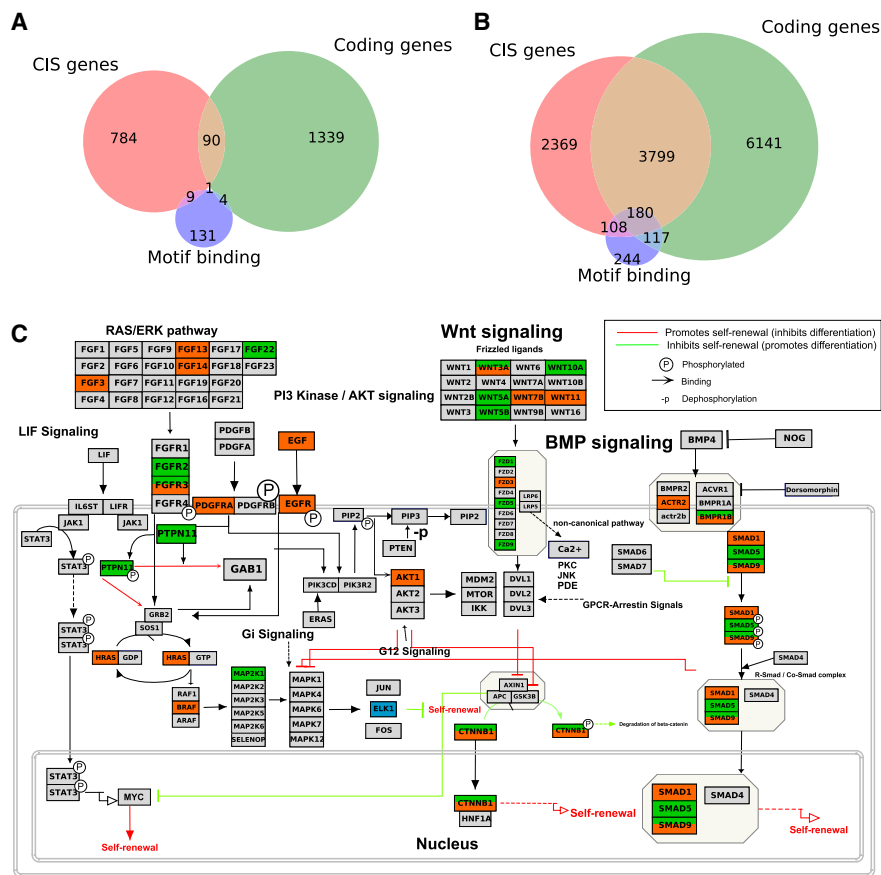


Figure 5. Comparison of beak shape-associated gene sets derived from coding and noncoding genomic regions. (A) Overlap of the identified gene sets. (B) Overlap of genes included in each data set (background). (C) Thirty-two genes identified in our study occurring in the ESC pluripotent pathways, including BMP and Wnt signaling. Genes highlighted in green were detected in the protein-coding analysis, and genes highlighted in orange were detected in the noncoding analysis. ELK1, labeled in blue, was detected as one of the transcription motif binding proteins. Coding genes denote all genes analyzed for the protein-coding gene analysis, CIS genes are genes in local proximity to analyzed noncoding genomic regions, and Motif binding are annotated proteins from the motif binding identification with TOMTOM (Gupta et al. 2007).

as with *COL4A5*, a type IV collagen protein encoding gene, and *ALX1*, implicated in craniofacial development in Darwin's finches, *BGLAP* may alternatively play a role in beak shape evolution (Lamichhane et al. 2015; Bosse et al. 2017).

Similarly, we identified *SOX5*, a gene previously associated with the evolution of craniofacial phenotypes in chickens, to be under putative positive selection in Strisores (Wright et al. 2009). Specifically, pea comb development is associated with ectopic expression of *SOX5* caused by copy number variation at the first intron of *SOX5* (Wright et al. 2009). This is independently corroborated by strong expression patterns of *SOX5* in the brain tissue (a possible proxy for craniofacial tissue, which is not included in expression profiles) of chickens (Merkin et al. 2012). Beyond the pea comb phenotype, *SOX5* is an essential transcription factor that acts to regulate chondrogenesis by enhancing a type-2 collagen protein (*COL2A1*) and promotes the differentiation of chondrocytes. Critically, the expression pattern of *COL2A1* in the prenasal cartilage, an important morphological module of beaks and their shape(s), explains beak shape differences between medium and large ground finches during the 27th embryonic stage of development (Mallarino et al. 2011). Therefore, we suspect that *SOX5* may

be important in explaining beak shape changes in swifts, hummingbirds, and nightjars.

Beak shape as a proxy for trait diversification

A key principle of adaptive radiation theory is that diversification of species is associated with ecological and morphological diversity (Schluter 2000). In birds, the evolution of morphological changes tends to coincide with speciation events, particularly early on in avian evolution (Foote 1997; Ricklefs 2004; Hughes et al. 2013; McEntee et al. 2018). Here, we focus particularly on beak shape evolution because of its putative importance as a key ecomorphological trait and its link to speciation, shown by long-term trends and direct ecological evidence in Darwin's finches (Podos 2001; Ricklefs 2004; Huber and Podos 2006; Grant and Grant 2009; Cooney et al. 2017; Han et al. 2017; Lamichhane et al. 2018; McEntee et al. 2018). However, evidently, many of the genes detected in this study are not associated with beak shape according to their putative functions. There are two explanations for this: (1) Some of the identified genes are pleiotropic in character; and (2) their functions are associated with traits that co-vary with beak shape evolution. We suspect that, alongside strong candidates for beak shape, we have detected genes implicated in a range of adaptive changes that have allowed species to diversify into different ecological niches. Here, estimates of beak shape evolution taken

from Cooney et al. (2017) may have acted to identify branches with the fastest rate of phenotypic evolution rather than beak shape evolution specifically. This may be of particular relevance for the identification of genomic loci underlying beak shape diversification hotspots.

In summary, we were able to identify genomic loci associated with beak shape morphological evolution over macroevolutionary time by combining morphometric analyses with genomic data. For both coding and noncoding regions, <20% of the tested loci show significant variation in their molecular rates. Most of the tested loci in this study are genetically very conserved on a macroevolutionary scale and hence cannot provide a genetic explanation for the observed phenotypic variation in beak shape across species. We show that homologs of identified protein-coding genes, as well as genes in close proximity to identified noncoding regions, are involved in craniofacial embryo development in mammals and pinpoint two associated pathways, BMP and Wnt signaling, illustrating that changes in coding as well as noncoding DNA facilitate phenotypic evolution of avian beak shape. The identified coding and noncoding loci are highly distinct, with significantly reduced overlap between them and fundamentally

different phenotype associations. At present, the selective forces that contribute to patterns of genetic and morphological diversification remain difficult to pinpoint. However, as genomic and morphological data continue to accumulate, our framework offers a potentially powerful approach to further disentangling the interplay of selection and drift responsible for driving the diversification of complex phenotypic traits at macroevolutionary scales.

Methods

Multiple sequence alignments for protein-coding genes

We used genomes of 57 bird species with high-quality annotations from NCBI RefSeq (Supplemental Table S2; O'Leary et al. 2016). First, 12,013 orthologous protein-coding genes were retrieved using RefSeq and HGNC gene identifiers, alongside reciprocal BLAST approaches based on three focal species—chicken, great tit, and zebra finch—three of the best annotated high-quality bird genomes available to date (Li et al. 2003; Östlund et al. 2010; Afanasyeva et al. 2018). We then performed a first set of alignment runs using PRANK (Löytynoja and Goldman 2008). To ensure the quality of these sequence alignments, we applied a customized pipeline including multiple alignment steps and quality filters. Details are described in the [Supplemental Methods](#).

Avian-specific highly conserved element (ASHCE) alignments derived from multispecies whole-genome alignments

To estimate substitution rates for noncoding conserved elements across the bird phylogeny, we obtained whole-genome information from NCBI for 72 bird species including the 57 bird species using in the coding DNA analysis. To generate a multispecies whole-genome alignment, we aligned the 72 avian reference genomes (as of February 15, 2017) against version 3 (galGal3) of the chicken (*G. gallus*) genome (version: galGal3 available from: ftp://ftp.ensembl.org/pub/release-54/fasta/gallus_gallus/dna/) using the MULTIZ package (Blanchette et al. 2004). Alignments were performed per chromosome following a pipeline published earlier (Corcoran et al. 2017). A list of query species, genome versions used, and download locations can be found in Supplemental Table S2. We used avian-specific highly conserved elements (ASHCEs) from Seki et al. (2017). They used whole-genome alignments for 48 avian and nine non-avian vertebrate species spanning reptile, mammal, amphibian, and fish to obtain 265,984 ASHCEs. We were able to prepare 229,001 (86% of the total number of ASHCE) high-quality alignments as input for the analysis with baseml. For this target, ASHCE regions were intersected with the whole-genome alignments using BEDTools (v2.27.0) (Quinlan and Hall 2010), and FASTA files were created using customized scripts. Spurious and poorly aligned sequences were automatically removed using trimAl v1.4 (Capella-Gutierrez et al. 2009).

Rates of morphological beak shape evolution

Information on beak shape evolution was extracted from a recent study (Cooney et al. 2017) that quantified patterns of beak shape evolution across 2028 species (>97% extant avian genera) covering the entire breadth of the avian clade. Briefly, this study used geometric-morphometric data based on 3D scans of museum specimens and multivariate rate heterogeneous models of trait evolution (Venditti et al. 2011) to estimate rates of beak shape evolution for all major branches in the avian phylogeny.

Based on this information, we hypothesized that branches found to have experienced rapid beak shape evolution should

also experience faster evolutionary change at the protein or genomic level. To test this, we split our evolutionary analyses into two, discrete approaches. First, for the detection of genes and genomic regions that have recurring effects on beak shape variation across multiple branches, we devised a binned approach. Second, for the detection of genes undergoing positive selection at branches that show rapid morphological change, we designed a hotspot approach.

Binned branch approach for the detection of large-effect genes and regulatory regions

To detect genes that may be undergoing repeated periods of rapid, possibly adaptive, evolution across multiple lineages, we grouped branches in each alignment phylogeny according to their rates of morphological evolution using *k*-means binning (Lloyd 1982). Here, we opted for up to eight (coding) and 16 (ASCHCE) bins, respectively, to enable robust statistical analysis but still reasonable computational time for the substitution rate analysis. To phylogenetically link the genetic data to the morphological data we relied on the backbone of Hackett et al. (2008); hence, we did not account for phylogenetic heterogeneity among genes and possible gene-tree species tree discordance. Branches were grouped incrementally based on rates of trait evolution using a *k*-means binning approach, with the first bin representing branches with the slowest rates of morphological evolution, and the last bin representing branches with the fastest rates of morphological evolution (Fig. 1). We assumed that genes involved in beak shape evolution would experience evolutionary rate change at the protein level (d_N/d_S) proportional to their respective rate of morphological evolution. Theoretically, we hypothesize that genes important in beak shape evolution across many branches would show a strong positive correlation.

In our analysis, we tested this using a branch model that assumes different substitution rates (d_N/d_S) across different, predefined branches in a phylogeny. Critically, the branch model may be useful in the detection of adaptive evolution occurring on particular branches (Yang 1998; Yang et al. 1998). Furthermore, we selected the branch model because of computational efficiency; the branch-site model and free-ratio model was deemed computationally intractable for a phylogeny of up to 57 species. Branches in each alignment's phylogeny were marked according to their respective bins (typically ranging from 1 to 8). Labeling bins as distinct types of branches allowed for the estimation of up to eight different d_N/d_S values per gene. Conjointly, for each binned model, an alternative null model assuming no difference in d_N/d_S between branches was run (one-ratio model). The difference between models was compared using a likelihood-ratio test (LRT) by comparing twice the log-likelihood difference between the two models, which is assumed to be χ^2 distributed, with the relevant degrees of freedom (Yang 2007).

To estimate rate heterogeneity among branches in noncoding regions, we used a model for which we assumed equal rates among branches (e.g., a global clock, clock = 1) and compared it to a model for which we assumed different rates for the binned branches (clock = 2), assessing significant differences between the models using a likelihood-ratio test. For the simulations (Supplemental Fig. S2), we randomly chose a 222-bp-long genomic region with 67 species. We run a free branch model (clock = 0) and used the obtained parameters as input for INDELible (Fletcher and Yang 2009). We simulated 100 sets of sequences and applied two types of binning: (1) a binning that grouped similar branch lengths, and (2) an arbitrary binning. We considered five different numbers of bins (with 2, 4, 8, 16, and unrestricted number of bins). We then conducted rate estimation on each of the binning approaches

and calculated how well these estimates correlated (Kendall's τ correlation coefficient) with the input parameters for INDELible (e.g., the simulation input) as well as the estimated values from the free branch model.

Hotspot approach for the detection of genes under positive selection

To formally test for rapid and potentially positive selection on branches with increased rates of morphological evolution, we used a “hotspot” approach. As opposed to focusing on large-effect genes important across distantly related avian taxa, we identified and marked specific, individual branches undergoing the fastest rates of morphological evolution, according to rate estimates from Cooney et al. (2017). At these branches, we hypothesize to detect higher d_N/d_S estimates relative to background branches.

Phenotype and pathway ontologies, protein databases, and statistical analyses

To determine the putative function of genes detected and enriched according to pathway and phenotype enrichment, we used WebGestalt (Wang et al. 2017) based on the human annotation. Specifically, we used the latest release of WebGestalt (last accessed November 3, 2019) and ran an Overrepresentation Enrichment Analysis (ORA) for phenotypes (Human Phenotype Ontology), pathways (Wikipathways), and diseases (Glad4U). We set the minimum number of genes for a category to 40 and reported top statistical significant results as weighted cover set (as implemented in WebGestalt). We also obtained a set of 511 genes known from mouse knockout phenotypes to result in abnormal craniofacial morphology or development (Brunskill et al. 2014). To account for multiple testing in our binned and hotspot models, χ^2 -squared P -values were corrected using the Benjamini–Hochberg procedure (Benjamini and Hochberg 1995). We used Kendall's τ correlation coefficient to compare the association between increasing bin number and corresponding d_N/d_S (coding) and substitution rates (noncoding) for each gene. Statistical analysis was conducted using the SciPy library in Python, and graphs were produced using the “tidyverse” package in R (Wilkinson 2011; R Core Team 2018) and the “matplotlib” package in Python. Phylogenies were produced using the “phytools” package in R (Revell 2012). Protein interaction partners for ALX1, BMP1, and CALM1 were retrieved from the STRING database (Szklarczyk et al. 2015) based on the human annotation requiring a minimum confidence score of 0.6 for all interaction partners. Motif detection was conducted using DREME (Bailey 2011) along with the identification of potential binding proteins using TOMTOM (Gupta et al. 2007). Specifically, we focused on vertebrate binding proteins using a common set of three available databases (JASPAR2018_CORE Vertebrates non-redundant, jolma2013, uniprobe_mouse) that together contained 649 annotated motif binding proteins.

Population genetic analysis in Darwin's finch populations with diverse beak morphologies

We obtained per site measurements of population differentiation (fixation index F_{ST} and nucleotide diversity θ) (Watterson 1975; Weir and Cockerham 1984) by calculating and contrasting genetic diversity of Darwin finch populations (Lamichhane et al. 2015) with blunt (5 and 10 individuals from *Geospiza magnirostris* and *G. conirostris* populations, respectively) and pointed beaks (10 and 8 individuals from *G. conirostris* and *G. difficilis* populations, respectively).

Software availability

Scripts concerning the analysis of protein-coding regions and noncoding regions are available at GitHub (<https://github.com/LeebanY/avian-comparative-genomics>; https://github.com/mattheatley/bird_project) and as Supplemental Code.

Competing interest statement

The authors declare no competing interests.

Acknowledgments

We thank Sangeet Lamichhane for providing F_{ST} data on the Darwin finch populations and Victor Soria-Carrasco, Gavin Thomas, and Jon Slate for constructive comments at earlier stages of this work. We also thank Ahmet Denli and three anonymous reviewers for their comments that helped to improve the quality of this work. T.I.G. is supported by a Leverhulme Early Career Fellowship (Grant ECF-2015-453) and a Natural Environment Research Council (NERC) grant (NE/N013832/1); C.R.C. is supported by a Leverhulme Early Career Fellowship (ECF-2018-101); and M.C.H. is supported by a Biotechnology and Biological Sciences Research Council (BBSRC) summer project placement funding.

Author contributions: L.Y. drafted the manuscript; T.I.G. and C.R.C. designed and supervised the study; T.I.G., L.Y., M.C.H., and J.P.G.P. conducted research; H.J.B. contributed to research; and T.I.G. finalized the manuscript with written input from all authors.

References

- Abzhanov A, Protas M, Grant BR, Grant PR, Tabin CJ. 2004. *Bmp4* and morphological variation of beaks in Darwin's finches. *Science* **305**: 1462–1465. doi:10.1126/science.1098095
- Abzhanov A, Kuo WP, Hartmann C, Grant BR, Grant PR, Tabin CJ. 2006. The calmodulin pathway and evolution of elongated beak morphology in Darwin's finches. *Nature* **442**: 563–567. doi:10.1038/nature04843
- Afanasyeva A, Bockwoldt M, Cooney CR, Heiland I, Gossmann TI. 2018. Human long intrinsically disordered protein regions are frequent targets of positive selection. *Genome Res* **28**: 975–982. doi:10.1101/gr.232645.117
- Andersson R, Sandelin A. 2020. Determinants of enhancer and promoter activities of regulatory elements. *Nat Rev Genet* **21**: 71–87. doi:10.1038/s41576-019-0173-8
- Bailey TL. 2011. DREME: motif discovery in transcription factor ChIP-seq data. *Bioinformatics* **27**: 1653–1659. doi:10.1093/bioinformatics/btr261
- Balanoff AM, Bever GS, Rowe TB, Norell MA. 2013. Evolutionary origins of the avian brain. *Nature* **501**: 93–96. doi:10.1038/nature12424
- Benjamini Y, Hochberg Y. 1995. Controlling the false discovery rate: a practical and powerful approach to multiple testing. *J R Stat Soc Ser B Methodol* **57**: 289–300. doi:10.1111/j.2517-6161.1995.tb02031.x
- Berv JS, Field DJ. 2018. Genomic signature of an avian Lilliput Effect across the K-Pg extinction. *Syst Biol* **67**: 1–13. doi:10.1093/sysbio/syx064
- Bhullar BA, Marugán-Lobón J, Racimo F, Bever GS, Rowe TB, Norell MA, Abzhanov A. 2012. Birds have paedomorphic dinosaur skulls. *Nature* **487**: 223–226. doi:10.1038/nature11146
- Bhullar BA, Morris ZS, Sefton EM, Tok A, Tokita M, Namkoong B, Camacho J, Burnham DA, Abzhanov A. 2015. A molecular mechanism for the origin of a key evolutionary innovation, the bird beak and palate, revealed by an integrative approach to major transitions in vertebrate history. *Evolution (N Y)* **69**: 1665–1677. doi:10.1111/evo.12684
- Bhullar BA, Hanson M, Fabbri M, Pritchard A, Bever GS, Hoffman E. 2016. How to make a bird skull: major transitions in the evolution of the avian cranium, paedomorphosis, and the beak as a surrogate hand. *Integr Comp Biol* **56**: 389–403. doi:10.1093/icb/icw069
- Bielawski JP, Baker JL, Mingrone J. 2016. Inference of episodic changes in natural selection acting on protein coding sequences via CODEML. *Curr Protoc Bioinformatics* **54**: 6.15.1–6.15.32. doi:10.1002/cpbi.2
- Blanchette M, Kent WJ, Riemer C, Elnitski L, Smit AFA, Roskin KM, Baertsch R, Rosenbloom K, Clawson H, Green ED, et al. 2004. Aligning multiple

- genomic sequences with the threaded blockset aligner. *Genome Res* **14**: 708–715. doi:10.1101/gr.1933104
- Bolívar P, Mugal CF, Nater A, Ellegren H. 2016. Recombination rate variation modulates gene sequence evolution mainly via GC-biased gene conversion, not Hill–Robertson interference, in an avian system. *Mol Biol Evol* **33**: 216–227. doi:10.1093/molbev/msv214
- Bolívar P, Guéguen L, Duret L, Ellegren H, Mugal CF. 2019. GC-biased gene conversion conceals the prediction of the nearly neutral theory in avian genomes. *Genome Biol* **20**: 5. doi:10.1186/s13059-018-1613-z
- Bosse M, Spurgin LG, Laine VN, Cole EF, Firth JA, Gienapp P, Gosler AG, McMahon K, Poissant J, Verhagen I, et al. 2017. Recent natural selection causes adaptive evolution of an avian polygenic trait. *Science* **358**: 365–368. doi:10.1126/science.aal3298
- Botero-Castro F, Figuet E, Tilak MK, Nabholz B, Galtier N. 2017. Avian genomes revisited: hidden genes uncovered and the rates versus traits paradox in birds. *Mol Biol Evol* **34**: 3123–3131. doi:10.1093/molbev/msx236
- Boyle EA, Li YI, Pritchard JK. 2017. An expanded view of complex traits: from polygenic to omnigenic. *Cell* **169**: 1177–1186. doi:10.1016/j.cell.2017.05.038
- Brugmann SA, Powder KE, Young NM, Goodnough LH, Hahn SM, James AW, Helms JA, Lovett M. 2010. Comparative gene expression analysis of avian embryonic facial structures reveals new candidates for human craniofacial disorders. *Hum Mol Genet* **19**: 920–930. doi:10.1093/hmg/ddp559
- Brunskill EW, Potter AS, Distasio A, Dexheimer P, Plassard A, Aronov BJ, Potter SS. 2014. A gene expression atlas of early craniofacial development. *Dev Biol* **391**: 133–146. doi:10.1016/j.ydbio.2014.04.016
- Butler JE, Kadonaga JT. 2002. The RNA polymerase II core promoter: a key component in the regulation of gene expression. *Genes Dev* **16**: 2583–2592. doi:10.1101/gad.1026202
- Capella-Gutierrez S, Silla-Martinez JM, Gabaldon T. 2009. trimAl: a tool for automated alignment trimming in large-scale phylogenetic analyses. *Bioinformatics* **25**: 1972–1973. doi:10.1093/bioinformatics/btp348
- Cooney CR, Bright JA, Capp EJ, Chira AM, Hughes EC, Moody CJA, Nouri LO, Varley ZK, Thomas GH. 2017. Mega-evolutionary dynamics of the adaptive radiation of birds. *Nature* **542**: 344–347. doi:10.1038/nature21074
- Corcoran P, Gossmann TI, Barton HJ, Great Tit HapMap Consortium, Slate J, Zeng K. 2017. Determinants of the efficacy of natural selection on coding and noncoding variability in two passerine species. *Genome Biol Evol* **10**: 1062. doi:10.1093/gbe/evy068
- Ducy P, Desbois C, Boyce B, Pinero G, Story B, Dunstan C, Smith E, Bonadio J, Goldstein S, Gundersen C, et al. 1996. Increased bone formation in osteocalcin-deficient mice. *Nature* **382**: 448–452. doi:10.1038/382448a0
- Felice RN, Goswami A. 2017. Developmental origins of mosaic evolution in the avian cranium. *Proc Natl Acad Sci* **115**: 555–560. doi:10.1073/pnas.1716437115
- Figuet E, Bonneau M, Carrio EM, Nadachowska-brzyska K, Ellegren H, Galtier N. 2017. Life history traits, protein evolution, and the nearly neutral theory in amniotes. *Mol Biol Evol* **33**: 1517–1527. doi:10.1093/molbev/msw033
- Fisher RA. 1930. *The genetical theory of natural selection*. Clarendon Press, Oxford.
- Fletcher W, Yang Z. 2009. INDELible: a flexible simulator of biological sequence evolution. *Mol Biol Evol* **26**: 1879–1888. doi:10.1093/molbev/msp098
- Foote M. 1997. The evolution of morphological diversity. *Annu Rev Ecol Syst* **28**: 129–152. doi:10.1146/annurev.ecolsys.28.1.129
- Galtier N, Duret L, Glémin S, Ranwez V. 2009. GC-biased gene conversion promotes the fixation of deleterious amino acid changes in primates. *Trends Genet* **25**: 1–5. doi:10.1016/j.tig.2008.10.011
- Gossmann T, Song BH, Windsor A, Mitchell-Olds T, Dixon C, Kapralov M, Filatov D, Eyre-Walker A. 2010. Genome wide analyses reveal little evidence for adaptive evolution in many plant species. *Mol Biol Evol* **27**: 1822–1832. doi:10.1093/molbev/msq079
- Gossmann T, Waxman D, Eyre-Walker A. 2014. Fluctuating selection models and McDonald-Kreitman type analyses. *PLoS One* **9**: e84540. doi:10.1371/journal.pone.0084540
- Gossmann TI, Bockwoldt M, Diringer L, Schwarz F, Schumann VF. 2018. Evidence for strong fixation bias at 4-fold degenerate sites across genes in the great tit genome. *Front Ecol Evol* **6**: 203. doi:10.3389/fevo.2018.00203
- Grant BR, Grant PR. 1996. High survival of Darwin's finch hybrids: effects of beak morphology and diets. *Ecol Soc Am* **77**: 500–509. doi:10.2307/2265625
- Grant PR, Grant BR. 2009. The secondary contact phase of allopatric speciation in Darwin's finches. *Proc Natl Acad Sci* **106**: 20141–20148. doi:10.1073/pnas.0911761106
- Gupta S, Stamatoyannopoulos JA, Bailey TL, Noble W. 2007. Quantifying similarity between motifs. *Genome Biol* **8**: R24. doi:10.1186/gb-2007-8-2-r24
- Hackett SJ, Kimball RT, Reddy S, Bowie RCK, Braun EL, Braun MJ, Chojnowski JL, Cox WA, Han KL, Harshman J, et al. 2008. A phylogenomic study of birds reveals their evolutionary history. *Science* **320**: 1763–1768. doi:10.1126/science.1157704
- Han F, Lamichhaney S, Grant BR, Grant PR, Andersson L, Webster MT. 2017. Gene flow, ancient polymorphism, and ecological adaptation shape the genomic landscape of divergence among Darwin's finches. *Genome Res* **27**: 1004–1015. doi:10.1101/gr.212522.116
- Hill WG. 2010. Understanding and using quantitative genetic variation. *Philos Trans R Soc B Biol Sci* **365**: 73–85. doi:10.1098/rstb.2009.0203
- Hu Z, Sackton TB, Edwards SV, Liu JS. 2019. Bayesian detection of convergent rate changes of conserved noncoding elements on phylogenetic trees. *Mol Biol Evol* **36**: 1086–1100. doi:10.1093/molbev/msz049
- Huber SK, Podos J. 2006. Beak morphology and song features covary in a population of Darwin's finches (*Geospiza fortis*). *Biol J Linn Soc* **88**: 489–498. doi:10.1111/j.1095-8312.2006.00638.x
- Huerta-Sanchez E, Durrett R, Bustamante CD. 2008. Population genetics of polymorphism and divergence under fluctuating selection. *Genetics* **178**: 325–337. doi:10.1534/genetics.107.073361
- Hughes M, Gerber S, Wills MA. 2013. Clades reach highest morphological disparity early in their evolution. *Proc Natl Acad Sci* **110**: 13875–13879. doi:10.1073/pnas.1302642110
- Hunter JP. 1998. Key innovations and the ecology of macroevolution. *Trends Ecol Evol* **13**: 31–36. doi:10.1016/S0169-5347(97)01273-1
- Jones CT, Youssef N, Susko E, Bielawski JP. 2016. Shifting balance on a static mutation–selection landscape: a novel scenario of positive selection. *Mol Biol Evol* **34**: msw237. doi:10.1093/molbev/msw237
- Karsenty G, Ferron M. 2012. The contribution of bone to whole-organism physiology. *Nature* **481**: 314–320. doi:10.1038/nature10763
- Kimura M. 1983. *The neutral theory of molecular evolution*. Cambridge University Press, Cambridge, UK.
- Lahti DC, Johnson NA, Ajie BC, Otto SP, Hendry AP, Blumstein DT, Coss RG, Donohue K, Foster SA. 2009. Relaxed selection in the wild. *Trends Ecol Evol* **24**: 487–496. doi:10.1016/j.tree.2009.03.010
- Lamichhaney S, Berglund J, Almén MS, Maqbool K, Grabherr M, Martinez-Barrio A, Promerová M, Rubin CJ, Wang C, Zamani N, et al. 2015. Evolution of Darwin's finches and their beaks revealed by genome sequencing. *Nature* **518**: 371–375. doi:10.1038/nature14181
- Lamichhaney S, Han F, Webster MT, Andersson L, Grant BR, Grant PR. 2018. Rapid hybrid speciation in Darwin's finches. *Science* **359**: 224–228. doi:10.1126/science.aao4593
- Lamichhaney S, Card DC, Grayson P, Tonini JFR, Bravo GA, Näpflin K, Termignoni-Garcia F, Torres C, Burbrink F, Clarke JA, et al. 2019. Integrating natural history collections and comparative genomics to study the genetic architecture of convergent evolution. *Philos Trans R Soc B* **374**: 20180248. doi:10.1098/rstb.2018.0248
- Lanfear R, Ho SYW, Love D, Bromham L. 2010. Mutation rate is linked to diversification in birds. *Proc Natl Acad Sci* **107**: 20423–20428. doi:10.1073/pnas.1007888107
- Lanfear R, Kokko H, Eyre-Walker A. 2014. Population size and the rate of evolution. *Trends Ecol Evol* **29**: 33–41. doi:10.1016/j.tree.2013.09.009
- Lartillot N. 2013. Interaction between selection and biased gene conversion in mammalian protein-coding sequence evolution revealed by a phylogenetic covariance analysis. *Mol Biol Evol* **30**: 356–368. doi:10.1093/molbev/mss231
- Lee NK, Sowa H, Hinoi E, Ferron M, Ahn JD, Confavreux C, Dacquin R, Mee PJ, McKee MD, Jung DY, et al. 2007. Endocrine regulation of energy metabolism by the skeleton. *Cell* **130**: 456–469. doi:10.1016/j.cell.2007.05.047
- Lefebvre V, Li P, De Crombrughe B. 1998. A new long form of Sox5 (L-Sox5), Sox6 and Sox9 are coexpressed in chondrogenesis and cooperatively activate the type II collagen gene. *EMBO J* **17**: 5718–5733. doi:10.1093/emboj/17.19.5718
- Levy Karin E, Wicke S, Pupko T, Mayrose I. 2017. An integrated model of phenotypic trait changes and site-specific sequence evolution. *Syst Biol* **66**: 917–933. doi:10.1093/sysbio/syx032
- Li L, Stoeckert CJ Jr, Roos DS. 2003. OrthoMCL: identification of ortholog groups for eukaryotic genomes. *Genome Res* **13**: 2178–2189. doi:10.1101/gr.1224503
- Lloyd SP. 1982. Least squares quantization in PCM. *IEEE Trans Inf Theory* **28**: 129–137. doi:10.1109/TVT.1982.1056489
- Lowe CB, Clarke JA, Baker AJ, Haussler D, Edwards SV. 2015. Feather development genes and associated regulatory innovation predate the origin of Dinosauria. *Mol Biol Evol* **32**: 23–28. doi:10.1093/molbev/msu309
- Löytynoja A, Goldman N. 2008. Phylogeny-aware gap placement prevents errors in sequence alignment and evolutionary analysis. *Science* **320**: 1632–1635. doi:10.1126/science.1158395

- Lynch M. 1987. The consequences of fluctuating selection for isozyme polymorphisms in *Daphnia*. *Genetics* **115**: 657–669.
- Machado JP, Johnson WE, Gilbert MT, Zhang G, Jarvis ED, O'Brien SJ, Antunes A. 2016. Bone-associated gene evolution and the origin of flight in birds. *BMC Genomics* **17**: 371. doi:10.1186/s12864-016-2681-7
- Mallarino R, Grant PR, Grant BR, Herrel A, Kuo WP, Abzhanov A. 2011. Two developmental modules establish 3D beak-shape variation in Darwin's finches. *Proc Natl Acad Sci* **108**: 4057–4062. doi:10.1073/pnas.1011480108
- Manceau M, Domingues VS, Linnen CR, Rosenblum EB, Hoekstra HE. 2010. Convergence in pigmentation at multiple levels: mutations, genes and function. *Philos Trans R Soc B Biol Sci* **365**: 2439–2450. doi:10.1098/rstb.2010.0104
- Matsumoto T, Akashi H, Yang Z. 2015. Evaluation of ancestral sequence reconstruction methods to infer nonstationary patterns of nucleotide substitution. *Genetics* **200**: 873–890. doi:10.1534/genetics.115.177386
- Mayrose J, Otto SP. 2011. A likelihood method for detecting trait-dependent shifts in the rate of molecular evolution. *Mol Biol Evol* **28**: 759–770. doi:10.1093/molbev/msq263
- McEntee JP, Tobias JA, Sheard C, Burleigh JG. 2018. Tempo and timing of ecological trait divergence associated with transitions to coexistence in birds. *Nat Ecol Evol* **2**: 1–17. doi:10.1038/s41559-018-0570-y
- Mera P, Laue K, Ferron M, Confavreux C, Wei J, Galán-Díez M, Lacampagne A, Mitchell SJ, Mattison JA, Chen Y, et al. 2016. Osteocalcin signaling in myofibers is necessary and sufficient for optimum adaptation to exercise. *Cell Metab* **23**: 1078–1092. doi:10.1016/j.cmet.2016.05.004
- Merkin J, Russell C, Chen P, Burge CB. 2012. Evolutionary dynamics of gene and isoform regulation in mammalian tissues. *Science* **338**: 1593–1599. doi:10.1126/science.1228186
- Merrill AE, Eames BF, Weston SJ, Heath T, Schneider RA. 2008. Mesenchyme-dependent BMP signaling directs the timing of mandibular osteogenesis. *Development* **135**: 1223–1234. doi:10.1242/dev.015933
- Nabholz B, Uwimana N, Lartillot N. 2013. Reconstructing the phylogenetic history of long-term effective population size and life-history traits using patterns of amino acid replacement in mitochondrial genomes of mammals and birds. *Genome Biol Evol* **5**: 1273–1290. doi:10.1093/gbe/evt083
- Nabholz B, Lanfear R, Fuchs J. 2016. Body mass-corrected molecular rate for bird mitochondrial DNA. *Mol Ecol* **25**: 4438–4449. doi:10.1111/mec.13780
- O'Connor TD, Mundy NI. 2009. Genotype–phenotype associations: substitution models to detect evolutionary associations between phenotypic variables and genotypic evolutionary rate. *Bioinformatics* **25**: i94–i100. doi:10.1093/bioinformatics/btp231
- O'Connor TD, Mundy NI. 2013. Evolutionary modeling of genotype-phenotype associations, and application to primate coding and non-coding mtDNA rate variation. *Evol Bioinform* **9**: 301–316. doi:10.4137/EBO.S11600
- O'Hara RB. 2005. Comparing the effects of genetic drift and fluctuating selection on genotype frequency changes in the scarlet tiger moth. *Proc R Soc B Biol Sci* **272**: 211–217. doi:10.1098/rspb.2004.2929
- Okita K, Yamanaka S. 2006. Intracellular signaling pathways regulating pluripotency of embryonic stem cells. *Curr Stem Cell Res Ther* **1**: 103–111. doi:10.2174/157488806775269060
- O'Leary NA, Wright MW, Brister JR, Ciufo S, Haddad D, McVeigh R, Rajput B, Robbertse B, Smith-White B, Ako-Adjei D, et al. 2016. Reference sequence (RefSeq) database at NCBI: current status, taxonomic expansion, and functional annotation. *Nucleic Acids Res* **44**: D733–D745. doi:10.1093/nar/gkv1189
- Östlund G, Schmitt T, Forslund K, Köstler T, Messina DN, Roopra S, Frings O, Sonnhammer EL. 2010. InParanoid 7: new algorithms and tools for eukaryotic orthology analysis. *Nucleic Acids Res* **38**: D196–D203. doi:10.1093/nar/gkp931
- Parsons KJ, Albertson RC. 2009. Roles for Bmp4 and CaM1 in shaping the jaw: evo-devo and beyond. *Annu Rev Genet* **43**: 369–388. doi:10.1146/annurev-genet-102808-114917
- Piechota M, Korostynski M, Przewlocki R. 2010. Identification of cis-regulatory elements in the mammalian genome: the cREMaG database. *PLoS One* **5**: e12465. doi:10.1371/journal.pone.0012465
- Podos J. 2001. Correlated evolution of morphology and vocal signal structure in Darwin's finches. *Nature* **409**: 185–188. doi:10.1038/35051570
- Prudent X, Parra G, Schwede P, Roscito JG, Hiller M. 2016. Controlling for phylogenetic relatedness and evolutionary rates improves the discovery of associations between species' phenotypic and genomic differences. *Mol Biol Evol* **33**: 2135–2150. doi:10.1093/molbev/msw098
- Prum RO, Berv JS, Dornburg A, Field DJ, Townsend JP, Lemmon EM, Lemmon AR. 2015. A comprehensive phylogeny of birds (Aves) using targeted next-generation DNA sequencing. *Nature* **526**: 569–573. doi:10.1038/nature15697
- Quinlan AR, Hall IM. 2010. BEDTools: a flexible suite of utilities for comparing genomic features. *Bioinformatics* **26**: 841–842. doi:10.1093/bioinformatics/btq033
- Raymond MH, Schutte BC, Torner JC, Burns TL, Willing MC. 1999. Osteocalcin: genetic and physical mapping of the human gene BGLAP and its potential role in postmenopausal osteoporosis. *Genomics* **60**: 210–217. doi:10.1006/geno.1999.5893
- R Core Team. 2018. *R: a language and environment for statistical computing*. R Foundation for Statistical Computing, Vienna. <https://www.R-project.org/>.
- Revell LJ. 2012. phytools: an R package for phylogenetic comparative biology (and other things). *Methods Ecol Evol* **3**: 217–223. doi:10.1111/j.2041-210X.2011.00169.x
- Ricklefs RE. 2004. Cladogenesis and morphological diversification in passerine birds. *Nature* **430**: 338–341. doi:10.1038/nature02700
- Rockman MV. 2012. The QTN program and the alleles that matter for evolution: All that's gold does not glitter. *Evolution* **66**: 1–17. doi:10.1111/j.1558-5646.2011.01486.x
- Rosenblum EB, Parent CE, Brandt EE. 2014. The molecular basis of phenotypic convergence. *Annu Rev Ecol Syst* **45**: 203–226. doi:10.1146/annurev-ecolsys-120213-091851
- Sackton TB, Grayson P, Cloutier A, Hu Z, Liu JS, Wheeler NE, Gardner PP, Clarke JA, Baker AJ, Clamp M, et al. 2019. Convergent regulatory evolution and loss of flight in paleognathous birds. *Science* **364**: 74–78. doi:10.1126/science.aat7244
- Schluter D. 2000. *The ecology of adaptive radiation*. Oxford University Press, Oxford, UK.
- Seki R, Li C, Fang Q, Hayashi S, Egawa S, Hu J, Xu L, Pan H, Kondo M, Sato T, et al. 2017. Functional roles of Aves class-specific cis-regulatory elements on macroevolution of bird-specific features. *Nat Commun* **8**: 14229. doi:10.1038/ncomms14229
- Sharma V, Hecker N, Roscito JG, Foerster L, Langer BE, Hiller M. 2018. A genomics approach reveals insights into the importance of gene losses for mammalian adaptations. *Nat Commun* **9**: 1215. doi:10.1038/s41467-018-03667-1
- Shultz AJ, Sackton TB. 2019. Immune genes are hotspots of shared positive selection across birds and mammals. *eLife* **8**: e41815. doi:10.7554/eLife.41815
- Simpson GG. 1944. *Tempo and mode in evolution*. Columbia University Press, New York.
- Stern DL. 2013. The genetic causes of convergent evolution. *Nat Rev Genet* **14**: 751–764. doi:10.1038/nrg3483
- Stroud JT, Losos JB. 2016. Ecological opportunity and adaptive radiation. *Annu Rev Ecol Syst* **47**: 507–532. doi:10.1146/annurev-ecolsys-121415-032254
- Szklarczyk D, Franceschini A, Wyder S, Forslund K, Heller D, Huerta-Cepas J, Simonovic M, Roth A, Santos A, Tsafou KP, et al. 2015. STRING v10: protein–protein interaction networks, integrated over the tree of life. *Nucleic Acids Res* **43**: D447–D452. doi:10.1093/nar/gku1003
- Venditti C, Meade A, Pagel M. 2011. Multiple routes to mammalian diversity. *Nature* **479**: 393–396. doi:10.1038/nature10516
- Wang J, Vasaiakar S, Shi Z, Greer M, Zhang B. 2017. WebGestalt 2017: a more comprehensive, powerful, flexible and interactive gene set enrichment analysis toolkit. *Nucleic Acids Res* **45**: W130–W137. doi:10.1093/nar/gkx356
- Watterson G. 1975. On the number of segregating sites in genetical models without recombination. *Theor Popul Biol* **7**: 256–276. doi:10.1016/0040-5809(75)90020-9
- Weber CC, Nabholz B, Romiguier J, Ellegren H. 2014. K_x/K_c but not d_x/d_s correlates positively with body mass in birds, raising implications for inferring lineage-specific selection. *Genome Biol* **15**: 542. doi:10.1186/s13059-014-0542-8
- Weir BS, Cockerham CC. 1984. Estimating F-statistics for the analysis of population structure. *Evolution* **38**: 1358–1370. doi:10.1111/j.1558-5646.1984.tb05657.x
- Whitney O, Pfenning AR, Howard JT, Blatti CA, Liu F, Ward JM, Wang R, Audet J-N, Kellis M, Mukherjee S, et al. 2014. Core and region-enriched networks of behaviorally regulated genes and the singing genome. *Science* **346**: 1256780. doi:10.1126/science.1256780
- Wilkinson L. 2011. ggplot2: elegant graphics for data analysis by Wickham, H. *Biometrics* **67**: 678–679. doi:10.1111/j.1541-0420.2011.01616.x
- Wirthlin M, Lovell PV, Jarvis ED, Mello CV. 2014. Comparative genomics reveals molecular features unique to the songbird lineage. *BMC Genomics* **15**: 1082. doi:10.1186/1471-2164-15-1082
- Wittkopp PJ, Kalay G. 2012. Cis-regulatory elements: molecular mechanisms and evolutionary processes underlying divergence. *Nat Rev Genet* **13**: 59–69. doi:10.1038/nrg3095
- Wright D, Boije H, Meadows JRS, Bed'hom B, Gourichon D, Vieaud A, Tixier-Boichard M, Rubin C-J, Imsland F, Hallböök F, et al. 2009. Copy number variation in Intron 1 of SOX5 causes the Pea-comb phenotype

- in chickens. *PLoS Genet* **5**: e1000512. doi:10.1371/journal.pgen.1000512
- Wu P, Jiang TX, Suksaweang S, Widelitz RB, Chuong CM. 2004. Molecular shaping of the beak. *Science* **305**: 1465–1466. doi:10.1126/science.1098109
- Xu X, Zhou Z, Dudley R, MacKem S, Chuong CM, Erickson GM, Varricchio DJ. 2014. An integrative approach to understanding bird origins. *Science* **346**: 1253293. doi:10.1126/science.1253293
- Yang Z. 1998. Likelihood ratio tests for detecting positive selection and application to primate lysozyme evolution. *Mol Biol Evol* **15**: 568–573. doi:10.1093/oxfordjournals.molbev.a025957
- Yang Z. 2007. PAML 4: phylogenetic analysis by maximum likelihood. *Mol Biol Evol* **24**: 1586–1591. doi:10.1093/molbev/msm088
- Yang Z, Nielsen R. 1998. Synonymous and nonsynonymous rate variation in nuclear genes of mammals. *J Mol Evol* **46**: 409–418. doi:10.1007/PL00006320
- Yang Z, Nielsen R, Hasegawa M. 1998. Models of amino acid substitution and applications to mitochondrial protein evolution. *Mol Biol Evol* **15**: 1600–1611. doi:10.1093/oxfordjournals.molbev.a025888

Received August 9, 2019; accepted in revised form March 17, 2020.