



Speciation network in Laurasiatheria: retrophylogenomic signals

Liliya Doronina, Gennady Churakov, Andrej Kuritzin, et al.

Genome Res. published online March 15, 2017

Access the most recent version at doi:[10.1101/gr.210948.116](https://doi.org/10.1101/gr.210948.116)

P<P	Published online March 15, 2017 in advance of the print journal.
Accepted Manuscript	Peer-reviewed and accepted for publication but not copyedited or typeset; accepted manuscript is likely to differ from the final, published version.
Creative Commons License	This article is distributed exclusively by Cold Spring Harbor Laboratory Press for the first six months after the full-issue publication date (see http://genome.cshlp.org/site/misc/terms.xhtml). After six months, it is available under a Creative Commons License (Attribution-NonCommercial 4.0 International), as described at http://creativecommons.org/licenses/by-nc/4.0/ .
Email Alerting Service	Receive free email alerts when new articles cite this article - sign up in the box at the top right corner of the article or click here .

Comprehensive immune receptor profiling.
Discover the **DriverMap™ AIR Assay** difference.

LEARN
MORE



To subscribe to *Genome Research* go to:
<https://genome.cshlp.org/subscriptions>

Published by Cold Spring Harbor Laboratory Press

**Speciation network in Laurasiatheria:
retrophylogenomic signals**

Liliya Doronina^{1*}, Gennady Churakov^{1,2+}, Andrej Kuritzin³, Jingjing Shi¹, Robert Baertsch⁴,
Hiram Clawson⁴, Jürgen Schmitz^{1+*}

¹Institute of Experimental Pathology, ZMBE, University of Münster, Von-Esmarch-Str. 56,
48149 Münster, Germany

²Institute for Evolution and Biodiversity, University of Münster, Hüfferstraße 1, 48149
Münster, Germany

³Department of System Analysis, Saint Petersburg State Institute of Technology, St.
Petersburg, Russia

⁴Department of Biomolecular Engineering, University of California, Santa Cruz, USA

*Corresponding authors: doronina@uni-muenster.de, jueschm@uni-muenster.de

+Equal contribution

Running title: Laurasiatherian retrophylogenomic network

Keywords: Laurasiatheria, retrophylogenomics, retrotransposons, incomplete lineage sorting,
genome mosaic, phylogenomic network.

Abstract

Rapid species radiation due to adaptive changes or occupation of new ecospace challenges our understanding of ancestral speciation and the relationships of modern species. At the molecular level, rapid radiation with successive speciations over short time periods - too short to fix polymorphic alleles - is described as incomplete lineage sorting. Incomplete lineage sorting leads to random fixation of genetic markers and hence random signals of relationships in phylogenetic reconstructions. The situation is further complicated when you consider that the genome is a mosaic of ancestral and modern incompletely sorted sequence blocks that leads to reconstructed affiliations to one or the other relatives depending on the fixation of their shared ancestral polymorphic alleles. The Laurasiatherian relationships among Chiroptera, Perissodactyla, Cetartiodactyla, and Carnivora present a prime example for such enigmatic affiliations. We performed whole-genome screenings for phylogenetically diagnostic retrotransposon insertions involving the representatives bat (Chiroptera), horse (Perissodactyla), cow (Cetartiodactyla), and dog (Carnivora), and extracted among 162 thousand preselected cases 102 virtually noise-free, phylogenetically informative retroelements to draw a complete picture of the highly complex evolutionary relations within Laurasiatheria. All possible evolutionary scenarios received considerable retrotransposon support, leaving us with a network of affiliations. However, the Cetartiodactyla-Carnivora relationship as well as the basal position of Chiroptera and an ancestral Laurasiatherian hybridization process did exhibit some very clear, distinct signals. The significant accordance of retrotransposon presence/absence patterns and flanking nucleotide changes suggest an important influence of mosaic genome structures in the reconstruction of species histories.

Introduction

The most challenging evolutionary diversification process for phylogenetic reconstructions is rapid radiation and fast speciation. Despite many attempts at resolution and growing amounts of whole-genome data, various rapidly radiating groups remain “anomaly zones” for deciphering phylogenetic relationships. In the worst case, these attempts lead to different, mutually exclusive, bifurcating trees depending on the chosen methods, sampling, or genomic areas analyzed. Such zones exist for deep coalescing animal groups (e.g., the early evolution of placentals ~120 million years ago (mya), Churakov et al. 2009, Nishihara et al. 2009) as well as for more recent speciations (e.g., ursine bears 2-3 mya, Kutschera et al. 2014).

With our analyses of increasing quantities of genomic information over the last decade, it became clear that the idea of unique bifurcating trees oversimplifies often complex ancestral demographic processes. Accumulating reports of discordance between gene and species trees indicate tangled evolutionary histories characterized by character conflicts due to phylogenetic hemiplasy (Avice and Robinson 2008) rather than to methodical errors or differences in taxonomic sampling (Baptiste et al. 2013).

Relationships among laurasiatherian orders present the most famous and still enigmatic example of controversial phylogenetic reconstructions among mammals. Laurasiatherians separated about 81 mya from other boreotherians (Hallström and Janke 2010) and subsequently spread over the supercontinent of Laurasia. The superorder includes the six orders Eulipotyphla, Chiroptera, Perissodactyla, Cetartiodactyla, Carnivora, and Pholidota. Currently, only the basal position of Eulipotyphla (Murphy et al. 2001, Nishihara et al. 2006, Meredith et al. 2011) and the sister-group relationships of Carnivora and Pholidota (Murphy et al. 2001, Doronina et al. 2015) are well established. Close to the Cretaceous-Paleogene mass extinction (73-70 Mya), Chiroptera, Perissodactyla, Cetartiodactyla, and Carnivora diversified from a common ancestor over a period of only 3 million years (Hallström and Janke 2010). The short speciation periods challenge the ability of polymorphic markers to be fixed in the population, and the existing variability beyond successive speciation events leads to incomplete lineage sorting (ILS). Many hopeful attempts have been made to reconstruct

strict bifurcating phylogenetic trees for Laurasiatheria. Accordingly, all possible variants of tree topologies can be recovered in the literature. However, the sister-group relationships of Perissodactyla and Carnivora (Zooamata clade) have received the most frequent support from both mitochondrial (Arnason et al. 2002) and large sets of nuclear data (Nery et al. 2012, Song et al. 2012). A competing hypothesis claiming the monophyly of Perissodactyla plus Cetartiodactyla (Euungulata clade) is supported by genome-wide nuclear studies (Zhou et al. 2012). Based on mitochondrial (Arnason et al. 2002), combined mitochondrial and nuclear (Murphy et al. 2001), and a large nuclear dataset (Tsagkogeorga et al. 2013), Chiroptera is often placed as a second basal laurasiatherian group after Eulipotyphla, as a sister group to the Fereuungulata clade (Perissodactyla+Cetartiodactyla+Carnivora). However, some molecular data show various other results as well [e.g., the Chiroptera/Cetartiodactyla clade (Nery et al. 2012) or the weakly supported Chiroptera/Carnivora clade (Matthee et al. 2007)].

Nishihara and colleagues (2006) presented a pioneering work in laurasiatherian phylogenetic tree reconstruction based on retroelements. Shared retrotransposon insertions at orthologous genomic positions in different orders indicate their inheritance via a common ancestry. Unfortunately, only a limited number of phylogenetically informative retrotransposon presence/absence markers (long interspersed elements, LINEs, L1 elements) were accessible at that time. They found four such markers merging Chiroptera, Perissodactyla, and Carnivora in one monophyletic group (Pegasoferae), but they also extracted one confounding marker merging Cetartiodactyla, Perissodactyla, and Carnivora.

Hallström et al. (2011) found 11 retrotransposon markers merging various contradictory order affiliations of Laurasiatheria. However, the group Pegasoferae was only moderately supported (three markers) and insertions supporting alternative phylogenetic relationships were also found (five markers). Using both sequence-based and retrotransposon-based analyses, they proposed that the phylogenetic relationships of laurasiatherian orders do not represent a simple bifurcating pattern, but rather a network. However, the question remains whether the early speciation process of Laurasiatheria left behind some traces of affiliations inside the network.

Recently it was proposed that genomes are composed of a mosaic of alleles or haplotype-blocks of about 5,000-200,000 nt from different times of origin and ancestors (Pääbo 2003). Therefore, different histories can be embedded in the genome, and depending on the region analyzed, can provide one or the other topology in tree reconstruction (e.g., 23% of the human genome does not show that chimpanzee is our closest relative; Ebersberger et al. 2007). Thus, in clades with rapidly diversifying species and exposed mosaic genome structures it is essential to conduct an exhaustive, genome-wide analysis and to use virtually homoplasy-free phylogenetic markers to overcome the incongruence between gene-trees and species-trees or to reveal a species network rather than a single bifurcating species-tree.

Retrotransposons as phylogenetic markers proved to be a powerful source to examine controversial phylogenetic relationships (Shimamura et al. 1997, Shedlock and Okada 2000), to quantify ILS, and to filter out signals buried in the noise (Takahashi et al. 2001, Shedlock et al. 2004, Kuritzin et al. 2016). The retrophylogenomic approach was successfully applied to many rapidly diversifying groups of organisms (Churakov et al. 2009, Nishihara et al. 2009, Doronina et al. 2015, Suh et al. 2015). Nevertheless, all previous attempts to analyze the phylogenetic relationships within Laurasiatheria using retroelements provided confounding results (see also Gatesy et al. 2016, their Figure 4). Due to their lack of extensive genomic data (Nishihara et al. 2006) or restriction of screening for insertions to only short introns (Hallström et al. 2011, Nishihara et al. 2006), neither of these studies was based on substantial amounts of data. In the present study we performed exhaustive multigenome and multidirectional screening of phylogenetically diagnostic retrotransposon insertions to investigate the phylogenetic network of laurasiatherian orders and to explore relationships between the Chiroptera, Perissodactyla, Cetartiodactyla, and Carnivora orders.

Results

We derived 2-way genome alignments and performed a genome-wide, multi-directional screening targeting the four laurasiatherian orders Chiroptera, Perissodactyla, Cetartiodactyla, and Carnivora, as well as the subsequently, manually added sequence information for the fifth

order Pholidota (pangolin) and eulipotyphlan outgroup (shrew, hedgehog, or mole) (see Materials and Methods). We identified a total of 162,000 retrotransposon insertions, from which we computationally extracted, under stringent conditions (see Materials and Methods), 243 loci containing the following preliminary informative markers (shared by at least two of the investigated orders): 176 L1 elements, 47 Long Terminal Repeats (LTRs), and 20 retropseudogenes. However, the Short INterspersed Elements (SINEs) frequently used as phylogenetic markers within mammalian orders did not cross order boundaries in laurasiatherians, and were therefore not suitable for the superorder Laurasiatheria phylogeny. All loci were carefully inspected manually (see Materials and Methods) and those with exact orthologous insertions were taken as informative markers. This last criterion yielded 102 informative markers (76 LINEs, 23 LTRs, and 3 retropseudogenes).

We found retrotransposon insertions supporting all possible sister group relationships of the investigated orders (Figure 1, Supplemental Table S1a). Four markers merged the Chiroptera and Cetartiodactyla orders, 9 supported the Chiroptera-Carnivora sister group relationship, 14 were shared by Cetartiodactyla and Carnivora, 11 indicated the Perissodactyla-Carnivora sister group relationship, 11 merged Chiroptera and Perissodactyla, and 10 supported the Perissodactyla-Cetartiodactyla sister group relationship. We also found retrotransposon support for all combinations of triplets of orders. Our screen revealed 14 markers supporting Chiroptera as the most basal order, 8 for Perissodactyla, 9 for Cetartiodactyla, and 12 supporting Carnivora as the earliest diverged order (Figure 1, Supplemental Table S1a).

Doronina et al. (2015) previously reported 10 shared retrotransposon insertions that significantly supported a phylogenetic association of Pholidota with Carnivora. Therefore, we did not initially include the pangolin genome in our underlying screening schema. Nevertheless, we were able to retrieve and align pangolin sequences to 144 of the investigated loci. For 141 of these loci (included in the final retrotransposon dataset) the pattern of retrotransposon distribution in Pholidota was shared with Carnivora, supporting their close sister group relationship. However, three loci contained a confounding element pattern and

were not included in the final retrotransposon dataset for neighbor-net and parsimony analyses. These LINE-insertions were present in Carnivora and some other laurasiatherian orders but clearly absent in Pholidota (see Supplemental Table S1e), perhaps representing few rare cases of the precise deletions of a retroelement in pangolin or reflecting the result of ILS.

However, as our genome-wide screening for diagnostic retrotransposon markers was performed under the highest possible stringency (see Materials and Methods) to receive only the most reliable signals exempt of any homoplasy, and all previous screenings of diagnostic laurasiatherian markers were somehow much more relaxed or represented sequence information from different species (Nishihara et al. 2006, Hallström et al. 2011), these markers were not included among our 102 selected cases. It is worth mentioning, however, that under relaxed conditions [allowing (1) a 25-nt overlap of diagnostic elements and their flanking regions, instead of 10-nt overlaps, and (2) rejecting our strict criterion of complete 3' regions for LINEs and searching for any parts of LINEs], we did retrieve 7 of the previously published markers (Nishihara et al. 2006; Hallström et al. 2011; Supplemental Table S2).

In an additional screening for the common ancestry of the four investigated lineages (Chiroptera, Perissodactyla, Cetartiodactyla, Carnivora) we revealed 15 diagnostic monophyly markers and 88 markers for the higher-level monophyly of Laurasiatheria (Supplemental Table S1b).

Both neighbor-net analysis (SplitsTree) and the most parsimonious tree reconstruction (Dollop in Phylip) provided similar “tree” topologies (Figure 2) for the four lineages in focus. We found a recurring tendency merging Carnivora and Cetartiodactyla (bootstrap support in SplitsTree 72%, in Dollop 57%) and placing Chiroptera at the basal position in our laurasiatherian tree (bootstrap support in SplitsTree 88%, in Dollop 63%). However, the neighbor-net analysis of retrotransposon presence/absence data also yielded some strong conflicting, mutually exclusive support for the Chiroptera-Perissodactyla sister group relationships (bootstrap support 77%).

With an advanced and expanded mathematical diffusion model adjusted to 4-lineage analyses and including hybridization scenarios (see Supplemental Material S1) we found that

the most likelihood binary tree topology agrees with the tree topology supported by our parsimony tree reconstruction (Figure 2) indicating the dog/cow sister group relationship and bat as the first divergence ($\log L = 3.63$; Hybridization model 3 - binary tree); however, a chi-square test did not provide significant support for this tree topology ($p > 0.1$). The remaining hybridization models revealed tree topologies with significant support for two hybridization scenarios, (1) connecting the horse to the bat and dog ancestors (highest $\log L = 7.06$, $p < 0.029$; Hybridization model 2) and (2) connecting the horse to the bat and a dog/cow ancestor at the point of dog/cow divergence ($\log L = 6.99$; $p < 0.031$; Hybridization models 1 and 2). For details see Table 2 in Supplemental Material S1; Figure 2, red lines.

To address the laurasiatherian sister group relationships using a different marker system, we performed 2-way genome screens of phylogenetically informative deletions (see Materials and Methods). We initially found 314,000 loci containing deletions, from which we extracted 457 potentially informative loci, and then identified 91 loci as phylogenetically informative. Similar to the data for retrotransposon markers, we found support for all possible combinations of order-pairs but with different frequencies: 1) 36 markers for Cetartiodactyla+Carnivora, 2) 20 for Chiroptera+Carnivora, 3) 13 for Perissodactyla+Cetartiodactyla, 4) 12 for Chiroptera+Perissodactyla, 5) 8 for Chiroptera+Cetartiodactyla, and 6) 2 for Perissodactyla+Carnivora (Supplemental Table S3). Thus, the Cetartiodactyla-Carnivora sister group relationships again received strong support (99.9% bootstrap, neighbor-net; 96% bootstrap, Dollop) in agreement with the tree reconstructions based on retrotransposon markers.

For all included retrotransposon markers we extracted ~400 nt from their flanking regions and sorted and concatenated these sequences corresponding to the 10 different order-affiliations derived from the presence/absence markers. Interestingly, for nine of the ten combinations of affiliations the neighbor-net analysis revealed the same phylogeny as previously shown for the retrotransposon presence/absence patterns (bootstrap > 73%), and in eight of these nine combinations the support was very strong (bootstrap > 90%; Supplemental Table S4). The neighbor-net analysis of the remaining concatenated dataset, corresponding to

the Chiroptera-Cetartiodactyla affiliation, shows their connection with a bootstrap support of just 57.5% (Supplemental Table S4).

An analysis of the chromosomal distribution of retrotransposon markers did not reveal any “phylogenetic” clusters of retroelement locations in the derived ideogram, showing that markers are distributed randomly across the entire genome (as exemplified for the dog ideogram, Figure 3).

Discussion

With the continuously increasing amounts of genomic data accumulating today, new waves of discovering the evolutionary histories of many groups of organisms arise, but also reveal more and more incidences of ILS, challenging our phylogenetic perceptions. The extent of ILS can vary over a wide range. In certain lineages, ILS simply produces some background noise, while the phylogenetic signal remains dominant (e.g., Doronina et al. 2015, Kutschera et al. 2014). However, in other lineages ILS leads to phylogenetic networks (e.g., Churakov et al. 2009, Nishihara et al. 2009, Suh et al. 2015), where neither increased sampling nor application of different analyses help to reconstruct a uniform bifurcating species-tree.

Laurasiatheria is a special group, in which confounding phylogenetic reconstructions have been the norm, leading to the consensus that it underwent a convoluted course of evolutionary speciations. Our retrotransposon presence/absence data contribute considerably to the current view of such a network connecting Chiroptera-Perissodactyla-Cetartiodactyla-Carnivora (Hallström et al. 2011). All ten possible variants of relationships of pairs and triplets of orders found clear support from retrotransposon markers. Excitingly, and in agreement with experience collected in birds (Matzke et al. 2012, Suh et al. 2015), ILS apparently occurred over a broad range of hierarchies of relationships within Laurasiatheria too. It occurred not only in terminal orders such as carnivores (Doronina et al. 2015) and was not only responsible for the confounding reconstructions of affiliations among the orders investigated here (Chiroptera, Perissodactyla, Cetartiodactyla, and Carnivora) but also arose in well defined early divergences such as Eulipotyphla (in addition to 15 diagnostic markers

for Chiroptera+Perissodactyla+Cetartiodactyla+Carnivora monophyly and 102 markers separating Eulipotyphla from other Laurasiatherians, 13 cases supported relationships with various positions of Eulipotyphla inside Laurasiatheria).

Ebersberger et al. (2007) hypothesized that the structure of a genome is a composition of different haplotype-blocks, following different genealogies (not necessarily according to the lineage evolutionary history). Incompletely sorted markers accumulating at different historical speciation points may lead to a mosaic of relationships in present reconstructions. Our retrotransposon data provide a virtually noise-free illustration of such mosaics in Laurasiatheria. In our case, 102 diagnostic retrotransposons were randomly distributed across the genome (Figure 3), rather than being spatially linked by their different phylogenetic topologies. We also investigated the sequence regions flanking our retrotransposon markers to determine whether the retrotransposons were embedded in phylogenetic mosaic units with consistent phylogenetic signals according to the flanking sequences. For nine of the ten possible order-combinations, a neighbor-net analysis (SplitsTree) of retrotransposon flanking concatenated sequences represented the same order-relationships as given by the presence/absence information of the retrotransposons. The flanks of the tenth group (Chiroptera+Cetartiodactyla) represented only a slight signal for a mosaic consensus relationship. Because this was the group with the lowest number of supportive retrotransposon markers (4 markers, with a length of concatenated flanking regions of 1600 nt), the weak support is possibly a result of random sequence variation. Hormozdiari and colleagues (2013) also found mostly consistent phylogenies for retrotransposon presence/absence patterns and flanking sequence signals in great apes. Of the tested retrotransposon loci, 84% revealed the same phylogenetic signals as the flanking sequences. They considered that this result underscores the virtually homoplasy-free origin of the studied retrotransposon insertions (free of random parallel insertions or deletions). Both studies provide significant evidence that ILS rather than homoplasy is the predominant reason for confounding presence/absence patterns of retrotransposon insertions and emphasize the mosaic structure of their historical signals in genomes.

Nevertheless, a closer phylogenetic examination of the laurasiatherian retrotransposon markers did reveal support for Chiroptera as the first divergence among the four investigated lineages (Dollop, 4-Lineage Insertion Likelihood test (4-LIL)), followed by Perissodactyla (Dollop) and a Cetartiodactyla - Carnivora sister group relationship (Dollop and neighbor-net analyses, 4-Lineage Insertion Likelihood test, Supplemental Material S1, Figure 2). The basal position of Chiroptera among the four investigated orders, and correspondingly the monophyly of the Fereuungulata clade comprising Perissodactyla, Cetartiodactyla, and Carnivora was also shown in some early studies (Pumo et al. 1998, Murphy et al. 2001, Waddell et al. 2001, Arnason et al. 2002) and found support in later studies of large datasets (Hallström et al. 2011, Song et al. 2012, Zhou et al. 2012). However, in one analysis we found a possible Chiroptera-Perissodactyla order affiliation (neighbor-net analysis, Figure 2) which previously also found some support in nuclear+mitochondrial dataset analysis (Murphy et al. 2007). The sister group relationships of Cetartiodactyla and Carnivora is a surprising result in disagreement with both the Zooamata (Perissodactyla-Carnivora; Murphy et al. 2001, Nery et al. 2012) and Euungulata (Perissodactyla-Cetartiodactyla; Waddell et al. 2001, Zhou et al. 2012) hypotheses. Only Prasad et al. (2008) presented tree reconstructions with a slight support of a Cetartiodactyla-Carnivora sister group relationship. Our test of this surprising Cetartiodactyla plus Carnivora signal with diagnostic random deletions as an alternative marker system confirmed this relationship. We propose the name “Cetartioferae” for this clade with the caveat that this group was not significantly supported by the hybridization models. We were lucky perhaps to detect this signal in rare genomic changes owing to their virtually homoplasy-free nature nearly completely devoid of phylogenetic noise (Ray et al. 2006). However, it should be mentioned that despite their rareness, homoplasious retroposon markers can not be completely excluded (e.g., Doronina et al. 2015). In addition, according to our analyses the early diversification of laurasiatherians was accompanied by ancestral hybridization. The expanded 4-Lineage Insertion Likelihood test indicated that the horse is a result of fusion between the ancestral population of the bat and a dog or dog/cow ancestor. It

should be considered that the ancestral laurasiatherian lineages diverged in a rapid succession, and that hybridization is a viable scenario under such conditions (Figure 2, red lines).

Among the possible three-order combinations, we found 9 markers supporting Pegasoferae, a clade merging Chiroptera, Perissodactyla, and Carnivora but excluding Cetartiodactyla (Nishihara et al. 2006; Figure 2, left species triplet), while 8, 12, and 14 markers supported the other three three-order combinations. Interestingly, the analysis of our data that considered the possibility of ancestral hybridization indicated some affiliation between dog, horse and bat ancestors that is somewhat similar to Pegasoferae. However, for our data the two significantly supported hybridization scenarios as well as all binary tree reconstructions suggest that Chiroptera, diverged earlier than Carnivora and Cetartiodactyla.

This is a good example of how important it is to apply whole genome-level analyses in complex, confounding zones of ancestral speciations. The heterogeneous genomic signals representing a legacy from a time of rapid speciation, incomplete lineage sorting of once polymorphic markers, and ancestral hybridization inevitably led to the confounding patterns of phylogenetic signals in modern Laurasiatheria. Thus, our extensive, whole-genome screens of the virtually homoplasy-free retrotransposon and deletion phylogenetic markers enabled us not only to reconstruct a homoplasy-free speciation network of laurasiatherian phylogenetic relationships but also to find some hidden phylogenetic signals that possibly resolve the early evolution of laurasiatherian orders. The detected mosaic nature of the order affiliations reflects the basic mosaic blocks of different sequence regions at the genomic level.

Materials and Methods

In this *in silico* high-throughput bioinformatics screening of derived 2-way genome alignments from representatives of Chiroptera (bat), Perissodactyla (horse), Cetartiodactyla (cow), and Carnivora (dog), we mainly focused on two retrotransposon classes known to be active during the early laurasiatherian radiation, LINE1 and LTRs, and also compared phylogenetic sequence signals from their flanking regions. In addition, we conducted a genome-wide screening of phylogenetically informative deletions.

To test all ten possible order affiliations, we screened for the following presence (+)/absence (-) patterns to determine possible sister-group relationships: 1) +bat+cow-horse-dog, 2) +bat+dog-horse-cow, 3) +cow+dog-bat-horse, 4) +horse+dog-bat-cow, 5) +bat+horse-cow-dog, 6) +horse+cow-bat-dog. We also screened for retrotransposon loci merging triplets of orders: 1) +bat+cow+dog-horse, 2) +bat+horse+dog-cow, 3) +horse+cow+dog-bat, 4) +bat+horse+cow-dog.

Furthermore, to further verify previous data of Eulipotyphla being the first diverged laurasiatherian group (e.g., Murphy et al. 2001) we screened the above 2-way genome alignments for the pattern +bat+horse+dog+cow, and subsequently manually aligned and checked representative eulipotyphlan sequences (shrew, hedgehog, or mole). To collect markers for laurasiatherian monophyly we again queried 2-way genome alignments, including one with the shrew genome, to search for the pattern +shrew+bat+horse+dog+cow, and then again manually checked the outgroup representatives.

Searching for informative retrotransposons

We performed an exhaustive, genome-wide screen for the genomic coordinates of phylogenetically informative retroelements and flanking regions based on custom-designed 2-way alignments derived as described in Kent et al. (2003) and Hartig et al. (2013). We used the 2-way genome alignments from the UCSC Genome Bioinformatics Center in Santa Cruz (Supplemental Material S2a). The bat (*M. lucifugus*), horse (*E. caballus*), cow (*B. taurus*), dog (*C. l. familiaris*), and shrew (*S. araneus*) RepeatMasker reports were downloaded from the sources described in Supplemental Material S2b.

We extracted coordinates of presence/absence patterns representing all combinations of the four tested species from 2-way alignments corresponding to Doronina et al. 2015, and correlated these patterns with retrotransposon coordinates from the downloaded RepeatMasker reports. In total we detected around 162,000 retrotransposon insertions. For

these insertions we applied stringent inclusion criteria, allowing only full-length LTR sequences (not more than 10-nt truncations from both sides) and only complete 3' regions for LINEs (not more than 25-nt truncations from the 3'-end of L1 consensus sequences). For pre-analysis we considered loci to be potentially informative if at least 70% of the retroelement aligned to a gap in other species and if the elements did not overlap by more than 10 nt at both flanking sequences.

Based on the detected genomic coordinates, we extracted sequences with additional ~500-nt flanking nucleotides of the 243 potentially informative loci from the genome sources described in Supplemental Material S2c.

The sequences of potentially informative loci were manually aligned and carefully inspected. The insertion orthology for each locus was defined by checking the element type and orientation, the exact position of insertion and target site duplications, and for L1 elements the exact 5'-truncation point of the insertions. The last criterion was used as an additional diagnostic indication of orthologous insertions. Two species with the identical 5'-truncation of an inserted LINE most probably acquired this element from a common ancestor. Applying these criteria led to the exclusion of 77 of the 243 loci.

Using the National Center for Biotechnology Information (NCBI) BLAST (<https://blast.ncbi.nlm.nih.gov/Blast.cgi>) and UCSC Genome Browser Database BLAT (<http://genome.ucsc.edu/cgi-bin/hgBlat>) algorithms, we supplemented the alignments with at least one additional representative of Chiroptera, Perissodactyla, Cetartiodactyla, and Carnivora, with one representative of Eulipotyphla (*Sorex araneus*, *Erinaceus europaeus*, or *Condylura cristata*), and, as far as available, complemented by pangolin genome information (*Manis pentadactyla* or *Manis javanica*). For each locus, two representatives from the following outgroups were added: Euarchontoglires, Afrotheria, and Xenarthra (Supplemental Table S1a, Supplemental Table S5). We selected only cases with support from two independent species per order (Chiroptera, Perissodactyla, Cetartiodactyla, and Carnivora) representing two different families to reduce the probability of falsely including homoplasious

insertions into our analysis. Based on this criterion, 4 markers were excluded, because the Perissodactyla were represented only by horse, while the corresponding genome information for the white rhinoceros was not available, leaving us with 162 markers (Supplemental Table S1, Supplemental Material S1, Supplemental Material S3). In addition, the conflicting presence/absence pattern in pangolin (3 loci) and the cases with missing sequences in the basal Eulipotyphla (44 loci) or incompatible presence patterns in Eulipotyphla (13 loci) were also excluded from our final dataset for the neighbor-net analysis (SplitsTree) and the most parsimonious tree reconstruction (Dollop in Phylip), leaving us with a final total of 102 markers (Supplemental Table S1a, Supplemental Material S3a).

Additional markers for the “+bat+horse+dog+cow” pattern were manually supplemented by one of the eulipotyphlan species (*Sorex araneus*, *Erinaceus europaeus*, or *Condylura cristata*) and one outgroup representative from Euarchontoglires, Afrotheria, or Xenarthra. Only insertions showing the “-eulipotyphlan species +bat+horse+dog+cow” presence/absence pattern were taken as informative markers for the Eulipotyphla phylogenetic position within laurasiatherian orders (Supplemental Table S1b). Markers for laurasiatherian monophyly (+shrew+bat+horse+dog+cow pattern) were manually supplemented by human (*Homo sapiens*) sequences and insertions with the “-human+shrew+bat+horse+dog+cow” pattern were taken as phylogenetically informative (Supplemental Table S1b).

Phylogenetic analysis

We built a presence/absence (1/0) data matrix for retrotransposon markers (Supplemental Table S1c) and reconstructed the most parsimonious tree using Dollop (Polymorphism Parsimony Program) in PHYLIP (Felsenstein 1989) version 3.695, applying standard parameters with a randomized input order of species (7 times to jumble, random seed “13131”). For each locus, data of two outgroups were pooled to create a single synthetic outgroup.

We also performed neighbor-net analyses of a presence/absence (1/0) data matrix in SplitsTree (Huson and Bryant 2006; version 4.13.1) using the standard settings for net reconstruction and bootstrap analysis.

As the KKSC insertion significance test of presence/absence data was originally designed for 3-lineage relationships only (Kuritzin et al. 2016), it was not directly applicable to the 4-lineage laurasiatherian comparison. Thus, we extended the previously derived mathematical diffusion model (Kuritzin et al. 2016) to find the tree topology with the most log-likelihood value and included different hybridization scenarios. We then used a chi-square approximation of log-likelihood ratios as proposed by Waddell et al. (2001) taking into account the degrees of freedom for the 4-lineage tree topology to indicate the significance of the most probable tree. This expanded statistical model is available as Supplemental Material S1.

Sequence analysis of flanking regions

To compare the phylogenetic signals of the retrotransposon presence/absence data with phylogenetic signals of nucleotide changes in their flanking regions we constructed concatenated alignments for each of the ten possible groups of retrotransposon-derived affiliations (the 10 different tree topologies pooled in Figure 1), representing the different competing relationships in Laurasiatheria. For each retrotransposon locus, sequences of ~400 nt flanking the retroelement marker (for species with the diagnostic insertion) or empty insertion sites (species without the insertion) were extracted for all investigated species. The alignments of extracted sequences were concatenated for each of the ten possible groups of affiliations (tree topologies) separately using the perl script “catfasta2phym.pl” (<https://github.com/nylander/catfasta2phym.pl>). All additional repetitive elements in flanking regions not present in all analyzed species were removed from the concatenated datasets.

In SplitsTree (Huson and Bryant 2006; version 4.13.1), neighbor-net analyses of the ten concatenated alignments were performed using the standard settings for net reconstruction and bootstrap analyses (Supplemental Table S4, Supplemental Material S4).

Screening and analysis of informative deletions

To compare the retrotransposon presence/absence results of laurasiatherian sister-group relationships to an independent dataset we screened 2-way genome alignments for informative deletions in all six possible groups of order-pairs. We screened for presence/absence patterns of deletions in two species with lengths in the range of 75-750 nt. We extracted the detected loci and checked for interfering repetitive sequences with a local RepeatMasker (<http://www.repeatmasker.org/RepeatMasker-open-4-0-5.tar.gz>) run. In the area of the deletion (in species with presence state), low complexity regions and repetitive elements occupying more than 20% of the deleted region were not included in potentially informative cases. The detected coordinates were used to extract genomic sequences using the same procedure as for retroelements. Potentially informative cases were carefully manually aligned and inspected. Species composition and outgroup selection are described above (Supplemental Table S3, Supplemental Material S5). All alignments from Supplemental Material S3-S5 are available from the Dryad Digital Repository: <http://dx.doi.org/10.5061/dryad.xxxxx>.

Acknowledgements

Many thanks for editorial support goes to Marsha Bundman and for the paintings of the bat, horse, dog, cow and the restoration of the extinct Eomaia to Jón Baldur Hlíðberg. This publication was financially supported by the DFG (SCHM1469/3-2, SCHM1469/10-1).

Authors contributions

LD, GC, and JSchmitz designed the study. RB and HC built the 2-way whole-genome alignments. GC performed the computational screenings of 2-way alignments and extracted diagnostic markers. AK and GC developed the 4-Lineage Insertion Likelihood test. LD performed all manual alignments and carried out the data analyses. JShi assisted in manually aligning informative loci. LD and JSchmitz wrote the manuscript.

References

- Arnason U, Adegoke JA, Bodin K, Born EW, Esa YB, Gullberg A, Nilsson M, Short RV, Xu X, Janke A. 2002. Mammalian mitogenomic relationships and the root of the eutherian tree. *Proc Natl Acad Sci U S A* **99**: 8151-8156.
- Avisé JC, Robinson TJ. 2008. Hemiplasy: a new term in the lexicon of phylogenetics. *Syst Biol* **57**: 503-507.
- Baptiste E, van Iersel L, Janke A, Kelchner S, Kelk S, McInerney JO, Morrison DA, Nakhleh L, Steel M, Stougie L et al. 2013. Networks: expanding evolutionary thinking. *Trends Genet* **29**: 439-441.
- Breen M, Bullerdiek J, Langford CF. 1999. The DAPI banded karyotype of the domestic dog (*Canis familiaris*) generated using chromosome-specific paint probes. *Chromosome Res* **7**: 401-406.
- Churakov G, Kriegs JO, Baertsch R, Zemann A, Brosius J, Schmitz J. 2009. Mosaic retroposon insertion patterns in placental mammals. *Genome Res* **19**: 868-875.
- Doronina L, Churakov G, Shi J, Brosius J, Baertsch R, Clawson H, Schmitz J. 2015. Exploring massive incomplete lineage sorting in arctoids (Laurasiatheria, Carnivora). *Mol Biol Evol* **32**: 3194-3204.
- Ebersberger I, Galgoczy P, Taudien S, Taenzer S, Platzer M, von Haeseler A. 2007. Mapping human genetic ancestry. *Mol Biol Evol* **24**: 2266-2276.
- Felsenstein J. 1989. PHYLIP—Phylogeny Inference Package (version 3.2). *Cladistics* **5**: 164-166.
- Gatesy J, Meredith RW, Janecka JE, Simmons MP, Murphy WJ, Springer MS. 2016. Resolution of a concatenation/coalescence kerfuffle: partitioned coalescence support and a robust family-level tree for Mammalia. *Cladistics*. DOI:10.1111/cla.12170.
- Hallström BM, Janke A. 2010. Mammalian evolution may not be strictly bifurcating. *Mol Biol Evol* **27**: 2804-2816.
- Hallström BM, Schneider A, Zoller S, Janke A. 2011. A genomic approach to examine the complex evolution of laurasiatherian mammals. *PLoS One* **6**: e28199.

DOI:10.1371/journal.pone.0028199.

- Hartig G, Churakov G, Warren WC, Brosius J, Makalowski W, Schmitz J. 2013. Retrophylogenomics place tarsiers on the evolutionary branch of anthropoids. *Sci Rep* **3**: 1756. DOI:10.1038/srep01756.
- Hormozdiari F, Konkel MK, Prado-Martinez J, Chiatante G, Herraes IH, Walker JA, Nelson B, Alkan C, Sudmant PH, Huddleston J et al. 2013. Rates and patterns of great ape retrotransposition. *Proc Natl Acad Sci U S A* **110**: 13457-13462.
- Huson DH, Bryant D. 2006. Application of phylogenetic networks in evolutionary studies. *Mol Biol Evol* **23**: 254-267.
- Ji Q, Luo ZX, Yuan CX, Wible JR, Zhang JP, Georgi JA. 2002. The earliest known eutherian mammal. *Nature* **416**: 816-822.
- Kent WJ, Baertsch R, Hinrichs A, Miller W, Haussler D. 2003. Evolution's cauldron: duplication, deletion, and rearrangement in the mouse and human genomes. *Proc Natl Acad Sci U S A* **100**: 11484-11489.
- Kuritzin A, Kischka T, Schmitz J, Churakov G. 2016. Incomplete lineage sorting and hybridization statistics for large-scale retroposon insertion data. *PLoS Comput Biol* **12**: e1004812. DOI:10.1371/journal.pcbi.1004812.
- Kutschera VE, Bidon T, Hailer F, Rodi JL, Fain SR, Janke A. 2014. Bears in a forest of gene trees: phylogenetic inference is complicated by incomplete lineage sorting and gene flow. *Mol Biol Evol* **31**: 2004-2017.
- Matthee CA, Eick G, Willows-Munro S, Montgelard C, Pardini AT, Robinson TJ. 2007. Indel evolution of mammalian introns and the utility of non-coding nuclear markers in eutherian phylogenetics. *Mol Phylogenet Evol* **42**: 827-837.
- Matzke A, Churakov G, Berkes P, Arms EM, Kelsey D, Brosius J, Kriegs JO, Schmitz J. 2012. Retroposon insertion patterns of neoavian birds: strong evidence for an extensive incomplete lineage sorting era. *Mol Biol Evol* **29**: 1497-1501.
- Meredith RW, Janecka JE, Gatesy J, Ryder OA, Fisher CA, Teeling EC, Goodbla A, Eizirik E, Simao TL, Stadler T et al. 2011. Impacts of the Cretaceous Terrestrial Revolution

- and KPg extinction on mammal diversification. *Science* **334**: 521-524.
- Murphy WJ, Eizirik E, O'Brien SJ, Madsen O, Scally M, Douady CJ, Teeling E, Ryder OA, Stanhope MJ, de Jong WW et al. 2001. Resolution of the early placental mammal radiation using Bayesian phylogenetics. *Science* **294**: 2348-2351.
- Murphy WJ, Pringle TH, Crider TA, Springer MS, Miller W. 2007. Using genomic data to unravel the root of the placental mammal phylogeny. *Genome Res* **17**: 413-421.
- Nery MF, Gonzalez DJ, Hoffmann FG, Opazo JC. 2012. Resolution of the laurasiatherian phylogeny: evidence from genomic data. *Mol Phylogenet Evol* **64**: 685-689.
- Nishihara H, Hasegawa M, Okada N. 2006. Pegasoferae, an unexpected mammalian clade revealed by tracking ancient retroposon insertions. *Proc Natl Acad Sci U S A* **103**: 9929-9934.
- Nishihara H, Maruyama S, Okada N. 2009. Retroposon analysis and recent geological data suggest near-simultaneous divergence of the three superorders of mammals. *Proc Natl Acad Sci U S A* **106**: 5235-5240.
- Pääbo S. 2003. The mosaic that is our genome. *Nature* **421**: 409-412.
- Prasad AB, Allard MW, Green ED. 2008. Confirming the phylogeny of mammals by use of large comparative sequence data sets. *Mol Biol Evol* **25**: 1795-1808.
- Pumo DE, Finamore PS, Franek WR, Phillips CJ, Tarzami S, Balzarano D. 1998. Complete mitochondrial genome of a neotropical fruit bat, *Artibeus jamaicensis*, and a new hypothesis of the relationships of bats to other eutherian mammals. *J Mol Evol* **47**: 709-717.
- Ray DA, Xing J, Salem AH, Batzer MA. 2006. SINEs of a nearly perfect character. *Syst Biol* **55**: 928-935.
- Shedlock AM, Okada N. 2000. SINE insertions: powerful tools for molecular systematics. *Bioessays* **22**: 148-160.
- Shedlock AM, Takahashi K, Okada N. 2004. SINEs of speciation: tracking lineages with retroposons. *Trends Ecol Evol* **19**: 545-553.
- Shimamura M, Yasue H, Ohshima K, Abe H, Kato H, Kishiro T, Goto M, Munechika I,

- Okada N. 1997. Molecular evidence from retroposons that whales form a clade within even-toed ungulates. *Nature* **388**: 666-670.
- Song S, Liu L, Edwards SV, Wu S. 2012. Resolving conflict in eutherian mammal phylogeny using phylogenomics and the multispecies coalescent model. *Proc Natl Acad Sci U S A* **109**: 14942-14947.
- Suh A, Smeds L, Ellegren H. 2015. The dynamics of incomplete lineage sorting across the ancient adaptive radiation of neoavian birds. *PLoS Biol* **13**: e1002224. DOI:10.1371/journal.pbio.1002224.
- Takahashi K, Terai Y, Nishida M, Okada N. 2001. Phylogenetic relationships and ancient incomplete lineage sorting among cichlid fishes in Lake Tanganyika as revealed by analysis of the insertion of retroposons. *Mol Biol Evol* **18**: 2057-2066.
- Tsagkogeorga G, Parker J, Stupka E, Cotton JA, Rossiter SJ. 2013. Phylogenomic analyses elucidate the evolutionary relationships of bats. *Curr Biol* **23**: 2262-2267.
- Waddell PJ, Kishino H, Ota R. 2001. A phylogenetic foundation for comparative mammalian genomics. *Genome Inform* **12**: 141-154.
- Zhou X, Xu S, Xu J, Chen B, Zhou K, Yang G. 2012. Phylogenomic analysis resolves the interordinal relationships and rapid diversification of the laurasiatherian mammals. *Syst Biol* **61**: 150-164.

Supplemental Data

Supplemental Table S1a: Presence/absence table of 102 informative retrotransposon markers with "-" state in Eulipotyphla.

Supplemental Table S1b: Presence/absence table of informative retrotransposon markers for the monophyly of Chiroptera+Perissodactyla+Cetartiodactyla+Carnivora group and Laurasiatheria monophyly.

Supplemental Table S1c: Presence/absence table of 102 informative retrotransposon markers for neighbor-net analysis (SplitsTree) and the most parsimonious tree reconstruction (Dollop in Phylip).

Supplemental Table S1d: Presence/absence table of retrotransposon markers with "?" state in Eulipotyphla.

Supplemental Table S1e: Presence/absence table of retrotransposon markers with conflicting patterns in Pholidota or Eulipotyphla.

Supplemental Table S2: Reasons for excluding previously detected markers.

Supplemental Table S3: Presence/absence table of all informative deletion markers.

Supplemental Table S4: Neighbor-net analyses (SplitsTree) of the ten concatenated alignments representing flanking regions of retrotransposon markers.

Supplemental Table S5: List of investigated species and sources of genome information from NCBI and UCSC Genome Bioinformatics.

Supplemental Material S1: 4-Lineage Insertion Likelihood test.

Supplemental Material S2a: Used 2-way genome alignments from UCSC Santa Cruz.

Supplemental Material S2b: Links to public RepeatMasker reports.

Supplemental Material S2c: Links to genomic sequences.

Supplemental Material S3: Alignments of retrotransposon markers for Chiroptera-Perissodactyla-Cetartiodactyla-Carnivora relationships.

Supplemental Material S4: Concatenated alignments of retrotransposon flanking regions.

Supplemental Material S5: Alignments of deletion markers.

Figure legends

Figure 1. Retrotransposon-based network of the four investigated laurasiatherian orders. Numbers in balls represent the total number of retrotransposon insertions found for the respective order-combination. Yellow balls represent markers merging two orders connected by the closest line. Gray balls represent markers merging the three orders arranged around the ball. The first framed number represents LINE1s, the second LTRs, and the third (if present) the number of retropseudogenes.

Figure 2. Phylogenetic network and phylogenetic tree reconstruction based on retrotransposon markers for the four investigated laurasiatherian orders. Neighbor-net (SplitsTree) analysis (*left*) and the most parsimonious tree reconstruction (Dollop in Phylip) (*right*) were conducted based on the presence/absence patterns of 102 retrotransposon insertions. Black numbers represent bootstrap values. The red number indicates the chi-square significance value from the 4-Lineage Insertion Likelihood test (see Supplemental_Material_S1.pdf) favoring the hybridization scenario merging horse with the bat and dog or dog/cow ancestor (red lines in the SplitsTree). An imaginary reconstruction of the Eomaia, an assumed ancestor of placentals, based on a description of Ji et al. (2002) is presented at the root of the “tree”.

Figure 3. Ideogram representing the genomic locations of the 102 retrotransposon markers in the dog genome. The numbers to the left of the chromosomes represent the order pairs/triplets that are supported and serial number of the marker in that group. Six duplicated regions (but each with consensus presence/absence patterns) are indicated with lower case letters (a-f). In addition, the colors of the numbers indicate the order pair/triplet affiliation to which the marker belongs, according to the legend at the bottom of the figure (see Supplemental_Table_S1a.xls). Chi = Chiroptera, Cet = Cetartiodactyla, Car = Carnivora, Per = Perissodactyla. The dog chromosome ideogram is adapted from Breen et al. (1999).



Carnivora

9
4/5

9
5/4

11
6/5

14
12/2

14
11/3

8
7/1

4
3/1

Perissodactyla

Cetartiodactyla

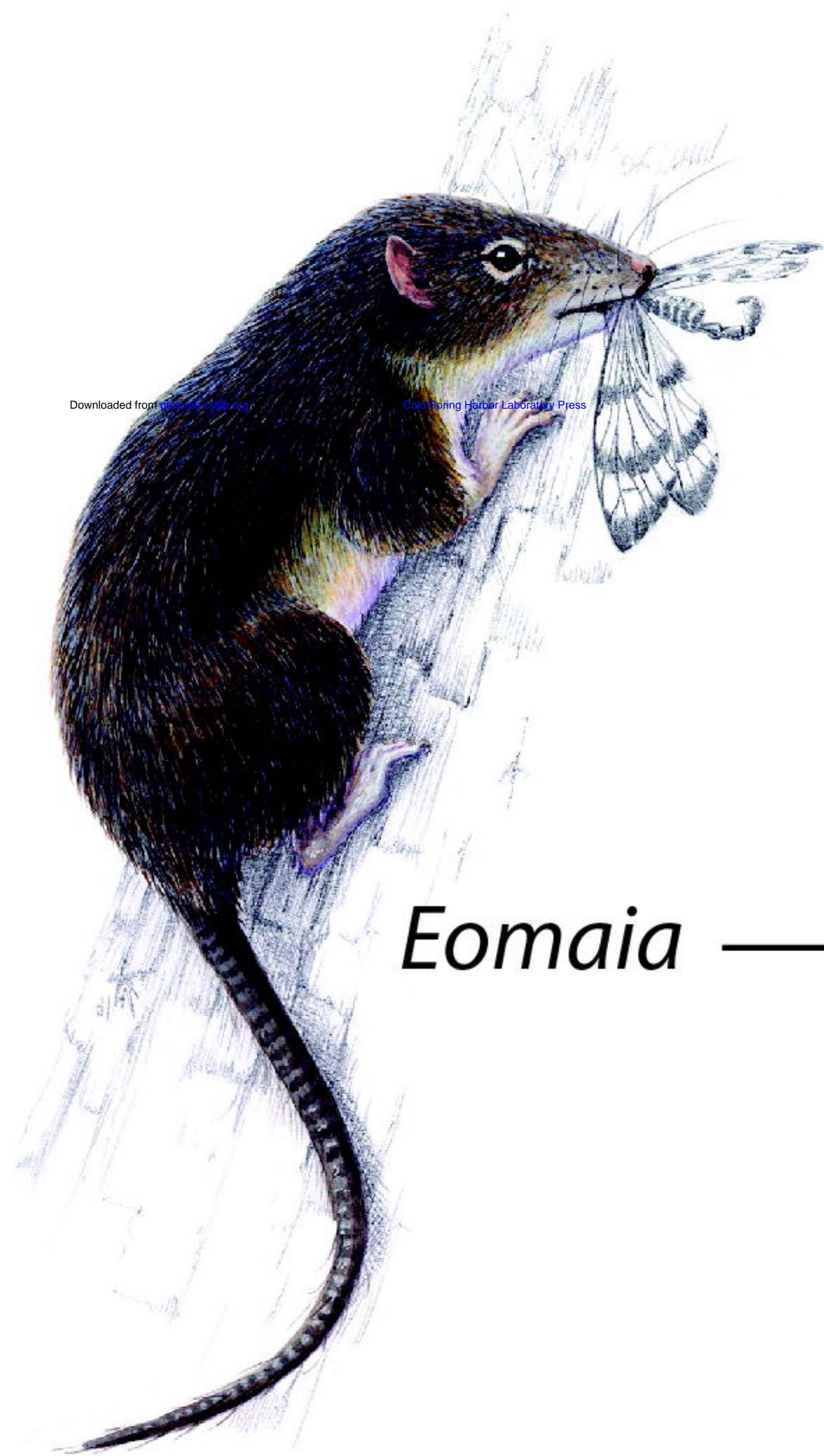
10
7/1/2

12
11/0/1

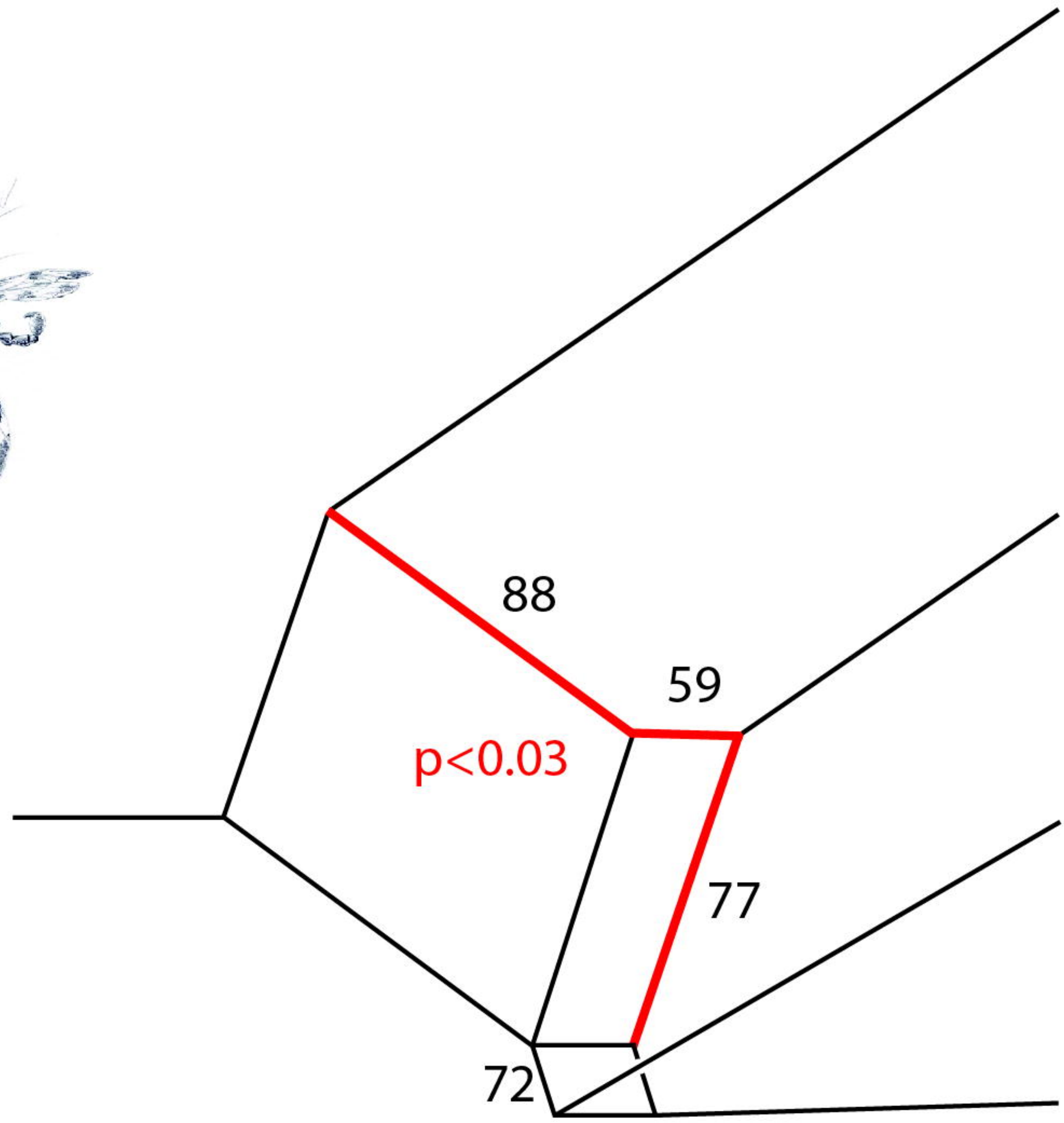
11
10/1

Chiroptera





Eomaia



Chiroptera



Perissodactyla



Carnivora



Cetartiodactyla

