

**A-type lamins bind both hetero- and euchromatin, the latter being regulated by lamina-associated polypeptide 2alpha**

**Kevin Gesson<sup>1,4</sup>, Philipp Rescheneder<sup>2,4</sup>, Michael P. Skoruppa<sup>1</sup>, Arndt von Haeseler<sup>2,3</sup>, Thomas Dechat<sup>1</sup> and Roland Foisner<sup>1,5</sup>**

<sup>1</sup>Department of Medical Biochemistry and <sup>2</sup>Center for Integrative Bioinformatics Vienna, Max F. Perutz Laboratories (MFPL), Medical University of Vienna and University of Vienna, Vienna Biocenter (VBC), Dr. Bohr-Gasse 9, A-1030 Vienna, Austria. <sup>3</sup>Bioinformatics and Computational Biology, Faculty of Computer Science, University of Vienna, Vienna, Austria

<sup>4</sup>These authors contributed equally. <sup>5</sup>Correspondence should be addressed to R.F. (email: [roland.foisner@meduniwien.ac.at](mailto:roland.foisner@meduniwien.ac.at))

**Running title:** A-type lamins bind both hetero- and euchromatin

**Keywords:** chromatin organization, lamins, lamina-associated polypeptide 2alpha, lamina-associated domains

**Corresponding author:**

Roland Foisner  
Max F. Perutz Laboratories  
Medical University of Vienna,  
Dr. Bohr-Gasse 9/3,  
A-1030 Vienna, Austria.  
Email: [roland.foisner@meduniwien.ac.at](mailto:roland.foisner@meduniwien.ac.at)  
Phone: +43-1-4277-61680, FAX: +43-1-4277-9616

## **ABSTRACT**

Lamins are components of the peripheral nuclear lamina and interact with heterochromatic genomic regions, termed lamina-associated domains (LADs). In contrast to lamin B1 being primarily present at the nuclear periphery, lamin A/C also localizes throughout the nucleus, where it associates with the chromatin-binding protein lamina-associated polypeptide (LAP) 2alpha. Here we show that lamin A/C also interacts with euchromatin, as determined by chromatin immunoprecipitation of euchromatin- and heterochromatin-enriched samples. By way of contrast, lamin B1 was only found associated with heterochromatin. Euchromatic regions occupied by lamin A/C overlap with those bound by LAP2alpha, and lack of LAP2alpha in *Lap2alpha*-deficient cells shifts binding of lamin A/C towards more heterochromatic regions. These alterations in lamin A/C-chromatin interaction correlate with changes in epigenetic histone marks in euchromatin but do not significantly affect gene expression. Loss of lamin A/C in heterochromatic regions in *Lap2alpha*-deficient cells, however, correlated with increased gene expression. Our data show a novel role of nucleoplasmic lamin A/C and LAP2alpha in regulating euchromatin.

## **INTRODUCTION**

The confined space of metazoan cell nuclei requires chromatin to be tightly packed while maintaining a high degree of organization to provide genome stability and coordinated operation of the transcriptional machinery (Cremer and Cremer 2010; Bickmore and van Steensel 2013). Conceptually, gene-rich and transcriptionally active chromatin localizes to the nuclear interior, while gene-poor and transcriptionally repressed chromatin preferentially resides at the nuclear periphery (Towbin et al. 2013; Amendola and van Steensel 2014).

The nuclear lamina, a scaffold structure at the periphery of metazoan nuclei, has a major role in chromatin organization by anchoring heterochromatin (Amendola and van Steensel 2014; Gruenbaum and Foisner 2015). Lamins, type V intermediate filaments, are the major constituents of the lamina (Gruenbaum and Foisner 2015). They are categorized into A-type lamins, comprising the major isoforms lamin A and C in mammals, and B-type lamins, including lamin B1 and B2. Whereas B-type lamins are ubiquitously expressed throughout development, A-type lamins are expressed in a differentiation-dependent manner (Dechat et al. 2010a; Gruenbaum and Foisner 2015). Lamins interact with a plethora of proteins in the inner nuclear membrane, which constitute important additional components of the nuclear lamina (Wilson and Berk 2010; Wilson and Foisner 2010; Korfali et al. 2012; de Las Heras et al. 2013).

At the molecular level, genome-wide interactions of chromatin with the nuclear lamina have first been mapped by the DamID technique (Greil et al. 2006) identifying genomic regions attached to the nuclear periphery, so-called lamina-associated domains (LADs). LADs cover nearly 40% of the human genome and are up to 10 Mb long, gene poor and enriched in repressive histone marks H3K9me3 and H3K27me3

(Guelen et al. 2008; Peric-Hupkes et al. 2010; Meuleman et al. 2013; van Steensel and Kind 2014; Amendola and van Steensel 2015). These studies led to the concept that the lamina anchors heterochromatin at the nuclear periphery thereby contributing to gene repression (Towbin et al. 2013; Amendola and van Steensel 2014). Solovei et al. showed that two protein complexes of the lamina redundantly link heterochromatin to the nuclear periphery, the inner nuclear membrane (INM) protein lamin B receptor (LBR), most likely in a complex with B-type lamins, and a complex of A-type lamins with LAP-Emerin-MAN1 (LEM) domain proteins of the INM (Solovei et al. 2013). LBR binds to H3K9me3 via the chromobox 5 (CBX5) protein (Ye and Worman 1996) and to H4K20me2 directly via its Tudor domain (Hirano et al. 2012). LEM proteins contain a bi-helical structural motif, the LEM domain that mediates association with chromatin via Barrier-to-Autointegration Factor (BANF1) (Brachner and Foisner 2011). Most LEM proteins are integral components of the INM and interact with lamins (Wilson and Foisner 2010) or require A-type lamins for their proper localization (Vaughan et al. 2001; Brachner et al. 2005). A well-studied group among mammalian LEM proteins comprises isoforms of lamina-associated polypeptide (LAP) 2, encoded by thymopoietin (*Tmpos*, also known as *LAP2*). The major LAP2 isoform in the INM, LAP2beta binds chromatin-associated BANF1 and DNA via its LEM and LEM-like domains, respectively (Cai et al. 2001), and contributes to gene repression by binding to transcriptional repressors germ cell-less (Nili et al. 2001) and ZBTB7B together with histone deacetylase (HDAC) 3 (Somech et al. 2005; Zullo et al. 2012).

Unlike B-type lamins, A-type lamins are also found in a mobile pool (Moir et al. 2000) throughout the nuclear interior (Dechat et al. 2010b). B-type lamins are tightly associated with the INM through post-translational addition of a hydrophobic farnesyl

group to their C-terminus (Gruenbaum and Foisner 2015). In contrast, lamin C is not farnesylated at all and pre-lamin A is only transiently farnesylated, as a C-terminal peptide, including the farnesyl group is removed in a final processing step (Sinensky et al. 1994; Pendas et al. 2002; Barrowman et al. 2008). Thus, A-type lamins can dissociate from the membrane into the nucleoplasm, where they interact with the non-membrane bound LAP2 isoform, LAP2alpha (Dechat et al. 2000). Deletion of exon 4 of the *Tmpos* gene generated mice specifically lacking LAP2alpha and leads to the selective loss of nucleoplasmic lamin A/C (Naetar et al. 2008). Loss of LAP2alpha causes tissue-specific phenotypes, including increased proliferation of tissue progenitor cells in epidermis, colon and the hematopoietic system (Naetar et al. 2008), delayed skeletal muscle differentiation (Gotic et al. 2010b) and impaired heart function (Gotic et al. 2010a). However, the molecular mechanisms remain elusive.

In view of the recently reported role of A-type lamins and LEM proteins in anchoring heterochromatin at the nuclear periphery (Solovei et al. 2013), we hypothesized that complexes of A-type lamins and LAP2alpha may also associate with chromatin in the nuclear interior. LAP2alpha has several means to interact with chromatin and DNA, including a LEM and LEM-like motif (Gesson et al. 2014), and was recently reported to associate with chromatin *in vivo* on a genome-wide level (Zhang et al. 2013).

Using various protocols for chromatin immunoprecipitation (ChIP) in immortalized wild-type (WT) and *Lap2alpha*-deficient (KO) murine dermal fibroblasts (imMDFs), we found that A-type lamins not only associate with heterochromatic LADs as reported (Meuleman et al. 2013; Lund et al. 2014; van Steensel and Kind 2014), but also show a genome-wide interaction with euchromatic regions outside of LADs. Interestingly, euchromatic regions bound by lamin A/C largely overlap with those

bound by LAP2alpha and were significantly rearranged and shifted towards heterochromatic regions in *Lap2alpha* KO cells resulting in changes in gene expression and epigenetic histone marks.

## **RESULTS**

### **A-type lamins interact with both heterochromatic LAD and euchromatic inter LAD regions**

Lamins associate with heterochromatic LADs at the nuclear periphery (Guelen et al. 2008; Peric-Hupkes et al. 2010; Kind et al. 2013; van Steensel and Kind 2014). To test whether also nucleoplasmic lamin A/C and LAP2alpha interact with chromatin, we performed ChIP for LAP2alpha and for two distinct domains of lamin A/C; using antibodies N18, directed against lamin A/C's N-terminus, and 3A6, detecting the C-terminal Ig fold. As a control for peripheral lamina-chromatin interactions we performed lamin B1 ChIP. Our ChIP protocol applied moderate sonication (12 cycles in a Bioruptor) yielding DNA fragments of 100-500 bp and allowing efficient immunoprecipitation of lamins and LAP2alpha (Supplemental Fig. 1, online). ChIP and respective input samples were analyzed by deep sequencing (ChIP-seq). Integrative Genomics Viewer (IGV) tracks, representing the  $\log_e$  (ChIP/input) signal, display wide-range chromatin interactions of all proteins (Fig. 1A). The enriched domain detector (EDD) peak calling algorithm (Lund et al. 2014) identified around 250 EDD peaks in lamin A/C, LAP2alpha, and lamin B1 ChIP samples with an average length of 1-2 Mb, in total covering 15-20% of the genome (Table 1). The SICER algorithm (Xu et al. 2014) identified significantly more (7000-9000) and smaller (average size of 25 kb) regions to be associated with LAP2alpha, lamin A/C

and lamin B1 (Table 1). Regions with a high SICER peak density overlapped with EDD peaks (Supplemental Fig. 2, online).

Next we tested whether the lamin A/C, LAP2alpha, and lamin B1-enriched chromatin domains match published lamin B1 LADs in mouse embryonic fibroblasts (MEF) identified by DamID (Meuleman et al. 2013). Whereas 95% of the lamin B1-associated genomic regions overlapped with lamin B1-LADs, only 27-41% of lamin A/C and LAP2alpha-associated regions overlapped (Figs 1A and C). Accordingly, in contrast to LADs, lamin A/C- and LAP2alpha EDD peaks were gene rich (18-24 genes/Mb versus 5 genes/Mb in LADs, Fig. 1A and D) and enriched in active H3K4me3 and H3K9ac histone marks, as well as in H3K27me3 (Fig. 1E). Lamin B1 predominantly associated with gene poor regions (Fig. 1D), devoid of active histone marks and maintaining the highest levels of the heterochromatic H3K9me3 mark (Fig. 1E). Thus, whereas lamin B1 interacted mainly with heterochromatic LADs, lamin A/C and LAP2alpha surprisingly occupied active, euchromatic regions of the genome. Elucidating the disparity between our data and the reported lamin A/C binding to LADs (Meuleman et al. 2013; van Steensel and Kind 2014), we noted that lamin A/C ChIP samples obtained after moderate sonication (12 cycles) contained, in addition to the main pool of DNA fragments of around 350 bp, a significant fraction of larger fragments (~1,5 kb, Supplemental Fig. 1, online). This fraction likely represents heterochromatic genomic regions, which were excluded from Illumina sequencing due to size selection. In order to make these regions accessible to analysis, we extended the sonication to 30 cycles and re-performed the ChIP. This resulted in a clear reduction of the larger DNA fragment pool, while still allowing for efficient immunoprecipitation (Supplemental Fig. 1, online). Under these conditions, lamin A/C-3A6-associated chromatin regions are shifted towards gene-poor

heterochromatin and overlap with LADs by about 96%, resembling lamin B1-associated regions (Fig. 1B-D). Concomitantly, active histone marks are lost and heterochromatic H3K9me3 is increased in lamin A-3A6-recovered regions (Fig. 1E). Moreover, lamin A/C-3A6 EDD peaks of the 30-cycle sample show only minimal overlap (11%) with peaks obtained from the 12-cycle sample, while the lamin B1 peaks overlapped nearly completely, although the recovery of lamin B1 LADs was significantly improved in the 30- versus 12-cycle preparation (Fig. 1F). Similar effects were observed when comparing lamin A/C-N18-associated chromatin regions in 30- versus 12-cycle ChIP preparations (Fig. 1 C-F). Taken together, these results suggest that A-type lamins occupy both heterochromatic LADs and euchromatic regions outside of LADs, while lamin B1 is enriched in heterochromatic LADs only.

#### **LAP2alpha and lamin A/C occupy similar genomic regions in euchromatin**

Our data showed that sonication conditions are a critical parameter for the nature of recovered lamin A/C-associated chromatin regions, moderate sonication (12 cycles) enriching for euchromatic regions and extended sonication (30 cycles) for heterochromatic LADs. Intriguingly, this effect was more pronounced in the lamin A/C-3A6 compared to lamin A/C-N18 ChIP samples. Whereas in the 12-cycle ChIP the lamin A/C-associated chromatin regions retrieved by the two lamin A/C antibodies coincided by nearly 80%, they considerably differed in the 30-cycle ChIP (Fig. 2A, lower panel), indicating that the 3A6 and N18 antibodies target different pools of A-type lamins. However, the overall overlap of lamin A/C-associated genomic regions with lamin B1-associated LADs strongly increased in the 30- versus 12-cycle preparation for both antibodies, N18 and 3A6 (Fig. 2A, bar graph).

The two lamin A/C ChIP samples also differ in their epigenetic marks. Lamin A/C-N18-associated domains contained more active histone marks (H3K4me3, H3K9ac) and less repressive H3K9me3 than the lamin A/C-3A6-bound regions in euchromatin-enriched samples and they had more H3K27me3 marks in the heterochromatin-enriched samples (Fig. 1E). These data suggest that antibody 3A6 targets lamin A/C associated with heterochromatin, as opposed to antibody N18 that may preferentially detect lamin A/C complexes in an open chromatin context. This hypothesis was further supported by immunofluorescence analyses of mixed cultures of *Lap2alpha* WT and *Lap2alpha* KO fibroblasts. While lamin A/C-N18 detects both peripheral and nucleoplasmic lamin A/C pools in *Lap2alpha* WT (but not in *Lap2alpha* KO) cells, lamin A/C-3A6 and lamin B1 detect primarily the peripheral lamina in both cell types (Fig. 2B). Furthermore, co-immunoprecipitation of lamin A/C and LAP2alpha revealed that lamin A/C-N18-antibody co-precipitated considerably more LAP2alpha than lamin A/C-3A6 antibody (Fig. 2C). We concluded that antibody 3A6 mainly detects lamin A/C complexes not bound to LAP2alpha, whereas antibody N18 targets nucleoplasmic lamin A/C in complex with LAP2alpha.

Having shown that lamin A/C binds in a heterochromatic and a euchromatic environment, we next tested to which extent the lamin A/C binding sites correlate with those of LAP2alpha. By overlapping of lamin A/C- and LAP2alpha-associated regions, we found that in euchromatin-enriched regions (12 cycles) the majority of lamin A/C EDD peaks (85% for 3A6 and 90% for N18) concurred with LAP2alpha EDD peaks (Fig. 2D). After extended sonication (30 cycles), the congruency of LAP2alpha with lamin A/C-3A6 and -N18 is diminished to 21% and 20%, respectively. Thus, the overlap of lamin A/C- and LAP2alpha-associated chromatin

regions decreased markedly in 30- versus 12-cycle preparations (Fig. 2D, bar graph). However, still more than half (56%) of lamin A/C-N18-associated chromatin (but only 24% of 3A6-associated regions) is also bound by LAP2alpha under these conditions (Fig. 2D). Similar results were obtained by comparing the number of SICER peaks per Mb bin between LAP2alpha versus lamin A/C-3A6 and LAP2alpha versus lamin A/C-N18 ChIP samples (Supplemental Fig. 2B, online). Furthermore, sequential ChIP of lamin A/C and LAP2alpha followed by qPCR revealed that lamin A/C and LAP2alpha co-occupy various genomic regions only in the euchromatin-enriched sample (Supplemental Fig. 3, online). Overall, we concluded that LAP2alpha and lamin A/C occupy similar genomic regions under conditions enriching for euchromatin, whereas in heterochromatin-enriched regions lamin A/C-chromatin association seems to be mostly independent of LAP2alpha.

### **Lamin A/C-binding is reorganized towards heterochromatic regions in *Lap2alpha*-deficient cells**

Given that LAP2alpha and lamin A/C predominantly co-occur in euchromatic genomic regions, we next aimed to investigate the role of LAP2alpha in lamin A/C chromatin interaction by extending our ChIP-seq experiments to *Lap2alpha* KO fibroblasts (Supplemental Fig. 4, online). We assessed changes in lamin A/C EDD peaks between *Lap2alpha* WT and *Lap2alpha* KO samples on a genome-wide scale in euchromatin-enriched regions. This analysis revealed lamin A/C-associated chromatin regions exclusively in *Lap2alpha* WT cells („lost in KO“; Fig. 3A, black arrowheads) or exclusively in *Lap2alpha* KO cells („gained in KO“; Fig. 3A, white arrowheads). At the genome-wide level only 61% of the lamin A/C-N18- and 47% of the lamin A/C-3A6-bound regions were detected in both *Lap2alpha* WT and KO cells

("WT^KO"), the remaining regions were either lost (39% of N18 and 53% of 3A6 peaks) or gained (41% of N18 and 51% of 3A6 peaks) in *Lap2alpha* KO cells (Fig. 3B). Interestingly, regions that lost or retained lamin A/C interaction in the *Lap2alpha* KO cells overlap with LAP2alpha-associated regions by 81-96%, while the newly gained lamin A/C associated regions showed only 24% (N18) and 7% (3A6) overlap (Fig. 3B). This indicates a reorganization and partial loss of lamin A/C within the LAP2alpha-associated regions in *Lap2alpha* WT versus KO cells and a gain of lamin A/C binding primarily outside these regions. Within the LAP2alpha-associated regions, 45%-59% of lamin A/C-associated regions were retained in the *Lap2alpha* KO cells while 31%-51% were lost and only a marginal fraction was gained (Fig. 3C). This rearrangement of lamin A/C-chromatin association is also reflected by the low correlation of SICER peak densities in *Lap2alpha* WT versus KO cells ( $R=0.539$  for N18 and  $R=0.438$  for 3A6) (Fig. 3D).

Interestingly, partial reorganization of lamin A/C-N18- and lamin A/C-3A6-associated domains in *Lap2alpha* KO versus WT cells was also detectable in the 30-cycle ChIP analyses (Supplemental Fig. 5, online), suggesting that in the absence of LAP2alpha, the association of lamin A/C with chromatin is reorganized at a genome-wide level.

In view of our findings that lamin A/C and LAP2alpha co-occupy particularly euchromatic genomic regions, while lamin A/C association with heterochromatic LADs occurs in large parts independent of LAP2alpha, we hypothesized that loss of LAP2alpha might affect the equilibrium between euchromatic and heterochromatic lamin A/C pools. Indeed, we found that the overlap of lamin A/C-3A6 EDD peaks with LADs increased from 41% in wild-type to 74% in *Lap2alpha* KO cells, that of lamin A/C-N18-identified EDD peaks from 27% to 41% (Fig. 4A), indicating that

lamin A/C tends to relocalize from euchromatic to heterochromatic regions in the absence of LAP2alpha.

### **Rearrangement of lamin A/C–chromatin association in *Lap2alpha*-deficient cells affects epigenetic profiles and gene expression**

To investigate whether the loss of LAP2alpha-chromatin interaction and the rearrangement of lamin A/C on chromatin affect epigenetic marks and gene expression, we analyzed active and repressive histone mark abundance (see histone mark tracks in Fig. 3A) in genomic regions that gained or lost lamin A/C binding in *Lap2alpha* KO versus WT cells.

Repressive H3K9me3 and H3K27me3 marks accumulated in regions that gained lamin A/C binding („gain“) and diminished in regions that lost lamin A/C binding („loss“) in *Lap2alpha* KO, whereas the abundance of these marks did not change in regions of unaltered lamin A/C-association (“WT^KO”) (Fig. 4B). Intriguingly, also the level of active H3K4me3 and H3K9ac marks decreased in regions that lost lamin A/C-binding in *Lap2alpha* KO cells, and increased in regions that gained lamin A/C binding. Thus, changes in lamin A/C binding to chromatin in *Lap2alpha* KO versus WT cells affect repressive and active marks similarly. Loss of LAP2alpha binding had a similar effect on the epigenetic profile as the loss of lamin A/C binding (Fig. 4B, upper panel). Changes in epigenetic marks were most prominent in ChIP samples enriched in euchromatin (12 cycles), as in heterochromatin-enriched ChIP samples (30 cycles) these marks changed only marginally (Supplemental Fig. 6, online).

Having determined that loss or gain of lamin A/C binding affects both active and repressive histone marks in a similar manner, we wondered, whether these changes are reflected by changes in gene expression. Assessing global gene expression

changes in *Lap2alpha* KO versus WT in imMDFs by RNA-seq, we found 616 genes to be differentially expressed (False Discovery Rate, FDR < 0.05; less than 5% are false positives), of which 341 were upregulated and 275 were downregulated (Supplemental Table 1). Of the 616 deregulated genes 239 were located in genomic regions of altered lamin A/C association (Supplemental Table 2). As expected, promoters of upregulated genes showed an increase in active and a decrease in repressive histone marks, and *vice versa* for downregulated genes (Figs 4B, lower panels and 4D, Supplemental Fig. 6, online). However, in the euchromatin-enriched samples, gain and loss of lamin A/C-gene association in *Lap2alpha* KO cells did not strictly correlate with overall down- and upregulation of gene expression, respectively (Figs 4B and C), although expression of several genes is clearly increased upon loss of lamin A/C- and decreased upon gain of lamin A/C-binding in *Lap2alpha* KO cells (Fig. 4D). In the heterochromatin-enriched samples (30 cycles) loss of lamin A/C binding was linked to a general increase in gene expression and gain of lamin A/C binding slightly decreased gene expression (Fig. 4C, D, Supplemental Fig. 6, online). Loss of LAP2alpha-association did neither correlate with up- nor downregulation of gene expression in both samples.

## **DISCUSSION**

Most studies performed to date report predominant binding of lamin A/C to heterochromatic regions (Kubben et al. 2012; Lund et al. 2013; McCord et al. 2013; Meuleman et al. 2013; Lund et al. 2014; van Steensel and Kind 2014). We show here that lamin A/C, but not lamin B1, binds to both hetero- and euchromatin.

We found this discrepancy to arise from the extent of chromatin shearing, where moderate conditions preserve and enrich for open euchromatin, while heterochromatin yields larger fragments usually excluded from deep sequencing. Conversely, prolonged sonication enriches heterochromatin, while euchromatin may be lost due to hyper-fragmentation. Our findings are in line with recent data showing that sonication versus micrococcal nuclease digestion in lamin A/C ChIP identified only partially overlapping lamin A/C-bound genomic regions (Lund et al. 2015).

Furthermore, the location and accessibility of the lamin A/C epitope recognized by the antibodies used for ChIP can ostensibly affect ChIP results. A lamin A/C antibody against the N-terminus (N18) favored lamin A/C complexes containing LAP2alpha, while an antibody to lamin A/C's C-terminal Ig fold (3A6) precipitated preferentially heterochromatin-associated lamin A/C not bound by LAP2alpha. As LAP2alpha interacts with the Ig fold of lamin A/C (Dechat et al. 2000) it may compete with binding of the C-terminal antibody 3A6.

Mature lamin A/C in the nuclear interior co-localizes with LAP2alpha (Dechat et al. 2000; Naetar et al. 2008). As euchromatic regions associated with lamin A/C were largely congruent with those bound by LAP2alpha, it is conceivable that euchromatin-associated lamin A/C is predominantly localized in the nuclear interior, whereas heterochromatin-bound lamin A/C is part of the peripheral lamina. Overall, our data are consistent with a model in which lamin A/C together with lamin B1 provide a stable anchor for heterochromatin at the nuclear lamina (Solovei et al. 2013; Towbin et al. 2013; Amendola and van Steensel 2014; Gruenbaum and Foisner 2015). Lamin A/C binding to euchromatin in the nuclear interior may be more dynamic, providing a flexible chromatin environment allowing efficient response to epigenetic and transcriptional regulators in a context-dependent manner.

In a *Lap2alpha*-deficient background lamin A/C relocalizes towards heterochromatic regions. How can LAP2alpha affect lamin A/C-chromatin interaction? Lamin A/C and LAP2alpha complexes in the nuclear interior are highly mobile (Moir et al. 2000; Dechat et al. 2004), and may thus bind chromatin in a dynamic manner, while immobile lamin A/C structures in the absence of LAP2alpha may bind chromatin more stably. Alternatively, LAP2alpha may compete with lamin A/C for binding to the same chromatin regions, ensuring flexibility of chromatin organization.

What are the consequences of altered lamin A/C chromatin interactions in *Lap2alpha* KO versus WT cells? Interestingly, in euchromatin both repressive and active histone marks were decreased in regions that lost lamin A/C binding and increased in regions that gained lamin A/C, without affecting overall gene expression. Thus, lamin A/C - LAP2alpha complexes may primarily be involved in establishing a chromatin environment permissive for epigenetic regulation, rather than regulating gene expression directly by binding to promoters as suggested for lamin A/C (Lund et al. 2013). In contrast, in heterochromatin epigenetic marks do not change in regions that gain or lose lamin A/C binding in *Lap2alpha* KO versus WT cells, but loss of lamin A/C binding correlated with increased gene expression, indicating that lamin A/C may serve different functions in euchromatin versus heterochromatin. The open and transcriptionally active environment in euchromatin allows efficient access of chromatin regulators such as epigenetic modifiers, nucleosomal remodeler complexes and transcriptional regulators. Lamin A/C-LAP2alpha complexes may contribute to this open chromatin state and thereby favor dynamic chromatin regulation. In such a scenario, gene expression changes occur in a context-dependent manner, for instance during differentiation due to the presence or absence of specific transcription factors. In contrast, heterochromatin is tightly packed and less accessible for regulators.

Lamin A/C in the lamina is known to contribute to heterochromatin formation and stable gene repression (Peric-Hupkes et al. 2010; Kind et al. 2013; Solovei et al. 2013; Harr et al. 2015). Therefore, loss of lamin A/C binding in heterochromatic regions may have profound effects on gene expression.

It is also tempting to speculate that an impairment of lamin's chromatin-regulating functions in the diseases linked to *LMNA* mutations (laminopathies) may contribute to the disease phenotype. In line with this hypothesis, expression of a muscle disease-causing lamin mutant in *C. elegans* impairs cell type-specific reorganization of repetitive DNA arrays during muscle differentiation (Mattout et al. 2011). In addition, expression of progerin, a lamin A mutant causing the premature aging disease Hutchinson Gilford Progeria Syndrome (HGPS), affects heterochromatin organization (Shumaker et al. 2006; McCord et al. 2013). Interestingly, while mature lamin A is not farnesylated, progerin retains its farnesyl moiety and is tightly bound to the INM at the nuclear periphery similar to lamin B1 (Dechat et al. 2007). We recently showed that expression of progerin causes loss of nucleoplasmic lamin A/C and LAP2alpha, leading to downregulation of the expression of extracellular matrix components (Vidak et al. 2015).

## **METHODS**

### **Cell culture**

Immortalized murine dermal *Lap2alpha* WT and KO fibroblasts (imMDFs) (Naetar et al. 2008) were cultured at 37°C, 5% CO<sub>2</sub> in Dulbecco's modified Eagles medium (DMEM), supplemented with 10% FCS, 2 mM L-Glutamine, 100 U/ml Penicillin, 100 µg/ml Streptomycin, 0.1 mM non-essential amino acids.

### **Chromatin immunoprecipitation followed by deep sequencing (ChIP-seq)**

ChIP was performed as previously described (Hauser et al. 2002) (see also Supplemental Material, online). Briefly, cells were cross-linked for 10 min with 1% formaldehyde and chromatin prepared by lysis (2x 10 min on ice). Nuclei-containing pellets were resuspended in lysis buffer (50 mM Tris-HCl [pH 8.1], 10 mM EDTA, 1% sodium dodecyl sulfate [SDS] 1 mM PMSF, 1x complete protease inhibitor) and sonicated with a Bioruptor® Plus (Diagenode) for 12 or 30 cycles. For histone mark ChIPs, 12 cycles of sonication were applied. 50 µg of chromatin were used for ChIP. Input chromatin was diluted 1:10 in ChIP dilution buffer (16.7 mM Tris-HCl [pH 8.1], 167 mM NaCl, 1.2 mM EDTA, 1.1 % Triton X-100, 0.01% SDS) and incubated with antibodies overnight. Chromatin-antibody complexes were captured with magnetic protein A/G beads and crosslinks were reversed. Eluted DNA was purified with the ChIP DNA Clean & Concentrator™ kit (Zymoresearch).

Sequencing libraries were prepared from DNA fragments ranging from 100 – 800 bp by the Vienna Biocenter CSF NGS unit ([www.csf.ac.at](http://www.csf.ac.at)) and sequenced either on an Illumina HiSeq 2000 or HiSeq 2500 at the CSF NGS unit. After demultiplexing, adapters were clipped with cutadapt (Martin 2011). Reads were mapped to the mouse genome (NCBI37/mm9 annotation from July 2007) with Bowtie 2 version 2.1.0

(Langmead and Salzberg 2012) using default parameters. Reads with a mapping quality below 20 were discarded. As suggested by Lund et al. (Lund et al. 2014), reads stemming from PCR duplicates were removed and all ChIP read files were downsampled to match the read count of their respective input sample using Picard (<http://broadinstitute.github.io/picard/>). Supplemental Table 3 lists the number of sequenced reads and mapped reads after filtering and deduplication for all samples.

**ChIP-seq data processing** (see also Supplemental Material, online)

Regions of enrichment (peaks) were identified using EDD version 1.0.2 (Lund et al. 2014) and SICER version 1.1 (Zang et al. 2009). Since EDD's auto parameter estimation was unsuited for our data sets, we used the parameter set “-b 11 -g 5 -fdr 0.1” (bin size 11 Kb, gap penalty 5) suggested for lamin A by Lund et al. (Lund et al. 2014). Based on visual inspection, these settings yielded the best results for our data. For SICER we used a window size of 1,000 bp, a gap size of 3,000 bp and a false discovery rate of 0.01, to account for the characteristics of lamin and LAP2alpha binding. See Table 1 for detailed information on peak number and genome coverage for all ChIP samples.

**RNA sequencing and analysis** (see also Supplemental Material, online)

10 µg of purified, rRNA-depleted RNA (>200 bp) were fragmented by hydrolysis (40 mM TrisOAc at pH 8.2, 100 mM KOAc, 150 mM MgOAc) at 94°C for 3 min. First- and second-strand cDNA synthesis was performed as described in detail in Supplemental Material (online). Sequencing libraries were prepared by the Vienna Biocenter CSF NGS unit using the NEBNext Library Prep Reagent Set for Illumina (NEB), multiplexed (2 samples/lane), and sequenced on HiSeq 2000 (Illumina) at the

CSF NGS unit. RNA-seq data analysis was done as described by Anders et al. (Anders et al. 2013) and in supplemental material (online). All significantly up- or down-regulated genes are listed in Supplemental Table 1. Significant changes in expression in Lamin A/C gain, loss and WT<sup>^</sup>KO regions were detected by comparing the actual log<sub>2</sub> fold change to fold changes obtained from 10,000 random permutations of differentially expressed genes. ( $p < 0.05$ ).

### **Data viewing**

ChIP-seq data (peaks and log ratios) were visualized with the Integrative Genomics Viewer (Robinson et al. 2011). Log ratios (base e) between Input and ChIP samples were computed for non-overlapping 10 kb bins using EDD-tools (<https://github.com/CollasLab/edd>). Genes shown in the browser view were obtained from the RefSeq data track provided by the UCSC Genome Browser. cLAD, ciLAD and MEF LAD annotations were downloaded from the GEO database (accession number GSE17051 (Peric-Hupkes et al. 2010) and GSE36132 (Meuleman et al. 2013)).

### **Cross-linked Immunoprecipitation**

50-100 µg of cross-linked chromatin, diluted 1:10 in ChIP dilution buffer, were incubated with antibodies overnight at 4 °C. Antibody-protein complexes were captured with magnetic protein A/G beads, 1/10 of the IP supernatant was put aside for later analysis, beads were washed (see ChIP-seq, Supplemental Material) and antibody-protein complexes were eluted in 1x Laemmli Buffer (Laemmli 1970).

### **Co-immunoprecipitation of lamin A/C and LAP2alpha**

$2 \times 10^7$  *Lap2alpha* WT imMDFs were harvested in 3 mL IP buffer (20 mM Tris-HCl [pH 7.5], 150 mM NaCl, 2 mM EGTA, 2 mM MgCl<sub>2</sub>, 1 mM DTT, 0.5% NP-40, 1U/mL Benzonase (Novagen), 1 mM PMSF, 1x complete protease inhibitor) and incubated on ice for 10 min. 1/20 of the lysate was kept as “Input”. 1/3 of the soluble supernatant fraction was incubated with antibodies overnight at 4 °C. Antibody-protein complexes were captured with magnetic protein A/G beads, 1/10 of the IP supernatant was put aside, beads were washed twice with IP buffer (w/o Benzonase) and IP samples eluted in 1x Laemmli buffer.

### **Western blot analysis**

Polyacrylamide gel electrophoresis was performed according to Laemmli (Laemmli 1970). After blotting onto nitrocellulose (Amersham), membranes were blocked with 5% BSA or Odyssey Blocking Buffer (Licor), incubated o/n with primary antibody and for 1 h with secondary antibodies.

### **Immunofluorescence**

$1-2 \times 10^5$  cells on coverslips were washed once with PBS++ (1 mM CaCl<sub>2</sub> and 0.5 mM MgCl<sub>2</sub>), fixed for 10 min with 4% formaldehyde/PBS, permeabilized with 50 mM NH<sub>4</sub>Cl and 0.5% Triton X 100/PBS for 10 min, and blocked with 0.5% gelatine/PBS for 15 min. Primary and secondary antibody dilutions were prepared in 0.5% gelatine /PBS and applied for 1 h at room temperature.

Samples were imaged using a Zeiss LSM 700 with a Zeiss Plan-Apochromat 63x/1.4 Oil DIC objective and processed with ImageJ and Photoshop CS4.

### **Antibodies**

lamin A/C (3A6-4C11, Active Motif 39287, hybridoma supernatant, 100  $\mu$ l for ChIP and Co-IP, 1:500 for WB, 1:100 for IF); lamin A/C (N18, Santa Cruz sc-6215, 10  $\mu$ g for ChIP and Co-IP, 1:100 for WB, 1:50 for IF); lamin B1 (Proteintech 12987-1-AP, 3  $\mu$ g for ChIP, 1:1000 for WB, 1:1000 for IF); mouse LAP2alpha (MFPL Monoclonal Antibody Facility, 8C10-1H11, hybridoma supernatant, 50  $\mu$ l for ChIP and Co-IP, 1:500 for WB, 1:50 for IF; specificity validated in Supplemental Fig. 3); LAP2alpha (245.2, abcam ab5162, 1:1000 for IF); H3K9me3 (abcam ab8898, 3  $\mu$ g for ChIP); H3K4me3 (Millipore 07-473, 3  $\mu$ g for ChIP); H3K9ac (Millipore 06-942, 3  $\mu$ g for ChIP); H3K27me3 (Millipore 07-449, 3  $\mu$ g for ChIP); mouse normal IgG (Millipore 12-371, 10  $\mu$ g for ChIP); rabbit normal IgG (abcam ab46540, 10  $\mu$ g for Co-IP); Secondary antibodies for WB: Licor IRDye 680RD Donkey anti-Mouse, 680RD Donkey anti-Rabbit, 800CW Donkey anti-Rabbit, 800CW Donkey anti-Goat, all 1:15000.

Secondary antibodies for IF: Dylight Donkey anti-Mouse 594, Donkey anti-Rabbit 594, Goat anti-Mouse 488, Goat anti-Rabbit 488, Donkey anti-Goat 549, all 1:500.

## **DATA ACCESS**

The data from this study have been submitted to the NCBI Gene Expression Omnibus (Edgar et al. 2002) under accession number GSE70149.

## **ACKNOWLEDGEMENT**

We thank Nana Naetar, Medical University Vienna for critically reading the manuscript. We are grateful to Egon Ogris, Medical University Vienna for providing antibodies to lamin A and LAP2alpha. We acknowledge grant support from the Austrian Science Fund (FWF grant P26492-B20) to RF and the Herzfelder'sche Familienstiftung to TD. KG and PR were supported by doctoral programs funded by Austrian Science Fund (FWF, W1207-B09 and W1220-B09).

## **COMPETING FINANCIAL INTERESTS / DISCLOSURE DECLARATION**

The authors declare no competing financial interests.

## **AUTHOR CONTRIBUTIONS**

KG conceived of, performed and analyzed experiments, prepared figures and co-wrote the manuscript, PR conceived of and performed bioinformatic analyses, MPS performed experiments and provided data for Supplemental Figure 1C, AvH provided scientific advice to bioinformatic analyses and corrected the manuscript, TD conceived of experiments, analyzed data and co-wrote the manuscript, RF conceived of and analyzed experiments and co-wrote the manuscript.

**SUPPLEMENTAL MATERIAL** is available for this article online

## FIGURE LEGENDS

### Table 1. Genome coverage of called peaks

Peak numbers, average length of peaks and total genome coverage of the indicated samples, analyzed by SICER and EDD.

Asterisk (\*) denotes data by Peric-Hupkes et al. (Peric-Hupkes et al. 2010) for constitutive LADs and constitutive interLADs and by Meuleman et al. (Meuleman et al. 2013) for MEF LADs.

### Figure 1. LAP2alpha and Lamin A/C associate with eu- and heterochromatin

(A and B) Screenshot of Integrative Genomics Viewer (IGV) tracks of chromosome 11 (mm9) representing  $\log_e$  ratios of ChIP/Input, scale is [-0.4;0.4] (upper panel), peak regions identified by EDD (mid panel), MEF LADs (GSE36132), and the RefSeq gene track (lower panel). Chromatin was sonicated for (A) 12 or (B) 30 cycles. ChIPs were performed with antibodies against LAP2alpha (8C10-1H11) and lamin A/C (3A6-4C11 and N18). (C) MEF LAD overlap. Degree of overlap (% of bp) of EDD peaks with MEF LADs. Error bars indicate the interval that contains 95 % of all mean overlaps obtained through random permutation tests. All overlaps are significantly smaller or larger than expected under the null model. ( $p < 10^{-4}$ ). (D) Gene density. Average gene density in EDD/DamID peak regions. Significance of gene density change from 12 to 30 cycle samples was tested using the Wilcoxon rank-sum test. (\*)  $p < 10^{-3}$ . (E) Histone marks in lamin-interacting sites. Average  $\log_e$  (ChIP/Input) of H3K4me3, H3K9ac, H3K27me3 and H3K9me3 in regions associated with lamin A/C and lamin B1. Differences between distributions of values from 12 to 30 cycle samples were tested by the Wilcoxon Rank-Sum test; green asterisk signifies  $p < 0.05$ , black asterisk  $p < 10^{-5}$  and red asterisk  $p < 10^{-15}$ . (F) Extent of overlap

between EDD peaks of LAP2alpha, lamin A/C and lamin B1 after 12 and 30 cycles of sonication, numbers indicate Mb.

**Figure 2. LAP2alpha and Lamin A/C overlap in euchromatic regions**

(A) Venn diagrams of genome-wide overlapping EDD peaks [Mb] of lamin B1 and lamin A/C samples upon 12 and 30 cycles of sonication. Overlaps (hatched) of lamin A/C-3A6 and -N18 with lamin B1 and overlaps of lamin A/C-3A6 with -N18 are highlighted in light blue (12 cycles) and light orange (30 cycles) and the corresponding % of overlap of EDD peaks are depicted as bar graphs. (B) Confocal immunofluorescence microscopic images of a mixed culture of *Lap2alpha* WT and KO mouse dermal fibroblasts double-stained for LAP2alpha and lamins as indicated. Unstained nuclei in LAP2alpha panels are outlined by a white line. Bar, 10  $\mu$ m (C) Co-IPs for lamin A/C-3A6, lamin A/C-N18 and LAP2alpha were performed in *Lap2alpha* WT imMDFs. Normal rabbit IgG was used as a negative control. (D) Venn diagrams of genome-wide overlapping EDD peaks [Mb] of LAP2alpha and Lamin A/C samples upon 12 and 30 cycles of sonication. Overlaps (hatched) of LAP2alpha with lamin A/C-3A6 and -N18 are highlighted in light blue (12 cycles) and light orange (30 cycles) and the corresponding % of overlap of EDD peaks are depicted as bar graphs.

**Figure 3. Lamin A/C-chromatin associations are rearranged in *Lap2alpha*-deficient versus wild-type cells**

(A) Screenshots of IGV tracks of chromosome 11 (mm9) representing log<sub>e</sub> (ChIP/Input) [-0.4;0.4], peak regions identified by EDD, MEF LADs, the RefSeq gene track, and histone mark tracks. Shown are data for LAP2alpha and lamin A/C

(precipitated with 3A6 or N18 antibodies in *Lap2alpha* WT and KO cells) after 12 cycles of sonication and data of histone marks after 12 cycles of sonication (scale for active marks H3K4me3 and H3K9ac is  $\log_e$  (ChIP/Input) [0;0.3] and for repressive marks H3K27me3 and H3K9me3  $\log_e$  (ChIP/Input) [-0.6;0.6]). Black arrowheads point to regions of loss of lamin A/C or histone marks and white arrowheads to regions of gain of lamin A/C or histone marks in *Lap2alpha* KO cells. **(B)** Venn diagrams of EDD peak overlaps [Mb] between lamin A/C in *Lap2alpha* WT and KO samples after 12 cycles of sonication. Numbers below Venn diagram show overlap [in Mb and %] of lamin A/C EDD peak fractions (occurring only in WT, in WT and KO or KO only) with LAP2alpha EDD peaks. **(C)** Redistribution of lamin A/C within LAP2alpha-associated sites. Pie chart depicting percentage of lamin A/C-associated regions (identified by antibodies N18 or 3A6) within the LAP2alpha-associated regions that retained, lost or gained lamin A/C binding in *Lap2alpha* KO versus WT samples. **(D)** SICER peak correlations (peaks/Mb) corresponding to data in **(B)**.

**Figure 4. Consequences of lamin A/C redistribution in *Lap2alpha*-deficient cells on chromatin organization and gene expression**

**(A)** MEF LAD overlap. Degree of overlap (% of bp) of EDD peaks obtained after 12 cycles of sonication for lamin A/C-N18 and -3A6 in *Lap2alpha* WT and KO mouse fibroblasts with MEF LADs. Error bars indicate the interval that contains 95 % of all mean overlaps obtained through random permutation tests. All overlaps are significantly smaller or larger than expected under the null model ( $p < 10^{-4}$ ). **(B)** Change in repressive and active histone marks. EDD peak regions of lamin A/C (N18 and 3A6) in *Lap2alpha* WT and KO cells were divided into regions occurring in both samples (“WT^KO”), losing association in *Lap2alpha* KO (“loss”), and gaining

associations *Lap2alpha* KO (“gain”). Percent difference (*Lap2alpha* KO vs. WT) in the abundance of repressive (H3K27me3, H3K9me3) and active (H3K4me3, H3K9ac) histone marks present in all lamin A/C-N18 and -3A6 “WT^KO”, “loss” and “gain” regions, all regions of LAP2alpha loss (ALL REGIONS) and promoter regions of up- (UP, gene promoter) and downregulated (DOWN, gene promoter) in lamin A/C-N18 and -3A6 “WT^KO”, “loss” and “gain” regions, after 12 sonication cycles. Asterisk (\*) denotes significant change in histone mark abundance ( $p < 0.05$ ) compared to random permutation testing. (C) Gene expression change. Average  $\log_2$ -fold change of differentially regulated genes in lamin A/C-N18 and -3A6 “WT^KO”, “loss” and “gain” regions and regions of LAP2alpha loss after 12 and 30 sonication cycles. Asterisk (\*) denotes significant gene expression change ( $p < 0.05$ ) compared to random permutation testing. (D) Redistribution of lamin A/C upon loss of LAP2alpha alters gene expression and histone mark decoration on promoters of affected genes. IGV track compilation of up- and downregulated genes in regions of loss and gain of lamin A/C in euchromatin-enriched (12 cycle) and heterochromatin-enriched (30 cycle) regions. Shown are EDD peak tracks for lamin A/C-N18 and -3A6 in *Lap2alpha* WT and KO cells obtained after 12 and 30 cycles of sonication, followed by RefSeq tracks of the respective genes (blue arrow denotes direction of transcription) and histone mark data tracks obtained after 12 cycles of sonication (scale for active marks H3K4me3 and H3K9ac is  $\log_e$  (ChIP/Input) [-5;5] and for repressive marks H3K27me3 and H3K9me3  $\log_e$  (ChIP/Input) [-3;3]). Black and white arrowheads point to regions of loss and gain of histone marks in *Lap2alpha* KO, respectively.

Table 1.

	EDD (b11, g5, fdr0.1) <sup>1</sup>						SICER (w_1K, g_3K) <sup>2</sup>					
	12 cyc			30 cyc			12 cyc			30 cyc		
	# of peaks	mean length [Mb]	genome coverage [%]	# of peaks	mean length [Mb]	genome coverage [%]	# of peaks	mean length [kb]	genome coverage [%]	# of peaks	mean length [kb]	genome coverage [%]
<b>LAP2alpha</b>	254	1.99	18.6	194	3.35	23.8	8950	27	8.9	5405	32	6.4
<b>LaA/C N18</b>												
<b>WT</b>	238	1.7	14.8	281	0.85	8.8	8762	27	8.8	6627	37	8.9
<b>LaA/C N18</b>												
<b>KO</b>	239	1.76	15.5	339	1.39	17.3	7118	36	9.3	7284	38	10.1
<b>LaA/C 3A6</b>												
<b>WT</b>	285	1.4	14.6	363	1.6	21.4	9159	25	8.5	6853	31	7.8
<b>LaA/C 3A6</b>												
<b>KO</b>	328	1.17	14.1	316	1.58	18.3	6308	30	6.9	4183	39	5.9
<b>Lamin B1</b>												
<b>WT</b>	279	1.6	16.4	370	2.58	35	7665	33	9.4	8751	34	10.9
	<b>DamID*</b>											
	# of peaks	mean length [Mb]	genome coverage [%]									
<b>cLAD</b>	3877	0.23	32.2									
<b>ciLAD</b>	3476	0.26	32.4									
<b>MEF LAD</b>	2831	0.47	47.1									

<sup>1</sup>EDD parameters: bin size 11 Kb (b11), gap penalty 5 (g5), false discovery rate 0.1 (fdr0.1)

<sup>2</sup>SICER parameters: window size 1 Kb (w\_1K), gap size 3 Kb (g\_3K)

## REFERENCES

- Amendola M, van Steensel B. 2014. Mechanisms and dynamics of nuclear lamina-genome interactions. *Curr Opin Cell Biol* **28C**: 61-68.
- Amendola M, van Steensel B. 2015. Nuclear lamins are not required for lamina-associated domain organization in mouse embryonic stem cells. *EMBO reports* doi:10.15252/embr.201439789.
- Anders S, McCarthy DJ, Chen Y, Okoniewski M, Smyth GK, Huber W, Robinson MD. 2013. Count-based differential expression analysis of RNA sequencing data using R and Bioconductor. *Nature protocols* **8**: 1765-1786.
- Barrowman J, Hamblet C, George CM, Michaelis S. 2008. Analysis of prelamin A biogenesis reveals the nucleus to be a CaaX processing compartment. *Mol Biol Cell* **19**: 5398-5408.
- Bickmore WA, van Steensel B. 2013. Genome architecture: domain organization of interphase chromosomes. *Cell* **152**: 1270-1284.
- Brachner A, Foisner R. 2011. Evolvement of LEM proteins as chromatin tethers at the nuclear periphery. *Biochem Soc Trans* **39**: 1735-1741.
- Brachner A, Reipert S, Foisner R, Gotzmann J. 2005. LEM2 is a novel MAN1-related inner nuclear membrane protein associated with A-type lamins. *J Cell Sci* **118**: 5797-5810.
- Cai M, Huang Y, Ghirlando R, Wilson KL, Craigie R, Clore GM. 2001. Solution structure of the constant region of nuclear envelope protein LAP2 reveals two LEM-domain structures: one binds BAF and the other binds DNA. *EMBO J* **20**: 4399-4407.
- Cremer T, Cremer M. 2010. Chromosome territories. *Cold Spring Harb Perspect Biol* **2**: a003889.
- de Las Heras JI, Meinke P, Batrakou DG, Srsen V, Zuleger N, Kerr AR, Schirmer EC. 2013. Tissue specificity in the nuclear envelope supports its functional complexity. *Nucleus* **4**: 460-477.
- Dechat T, Adam SA, Taimen P, Shimi T, Goldman RD. 2010a. Nuclear lamins. *Cold Spring Harb Perspect Biol* **2**: a000547.
- Dechat T, Gajewski A, Korbei B, Gerlich D, Daigle N, Haraguchi T, Furukawa K, Ellenberg J, Foisner R. 2004. LAP2alpha and BAF transiently localize to

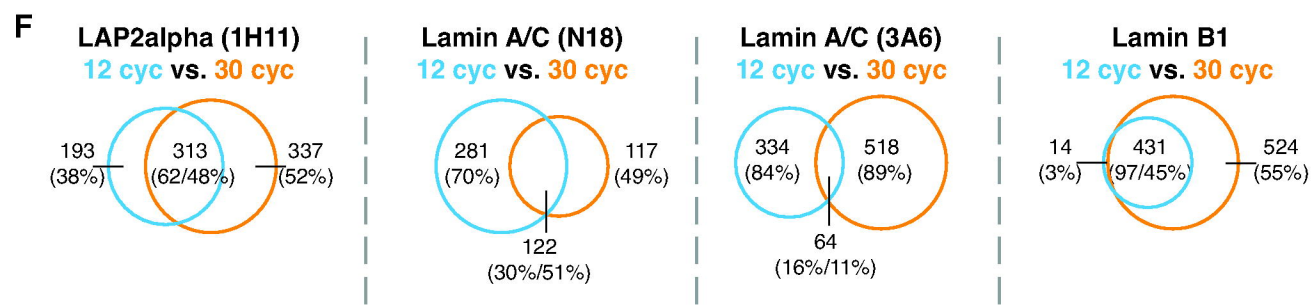
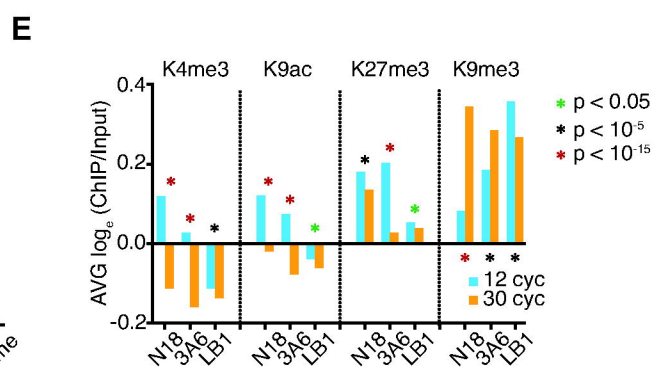
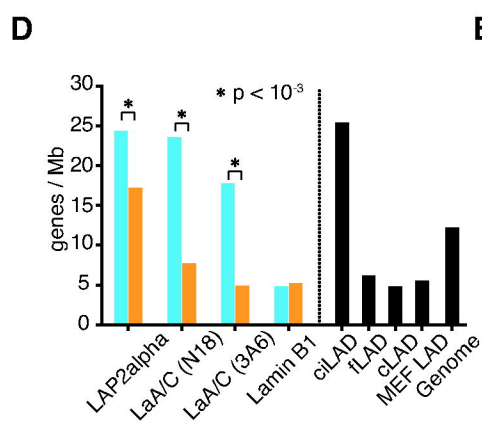
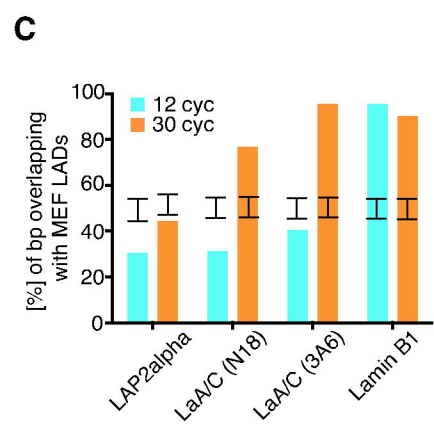
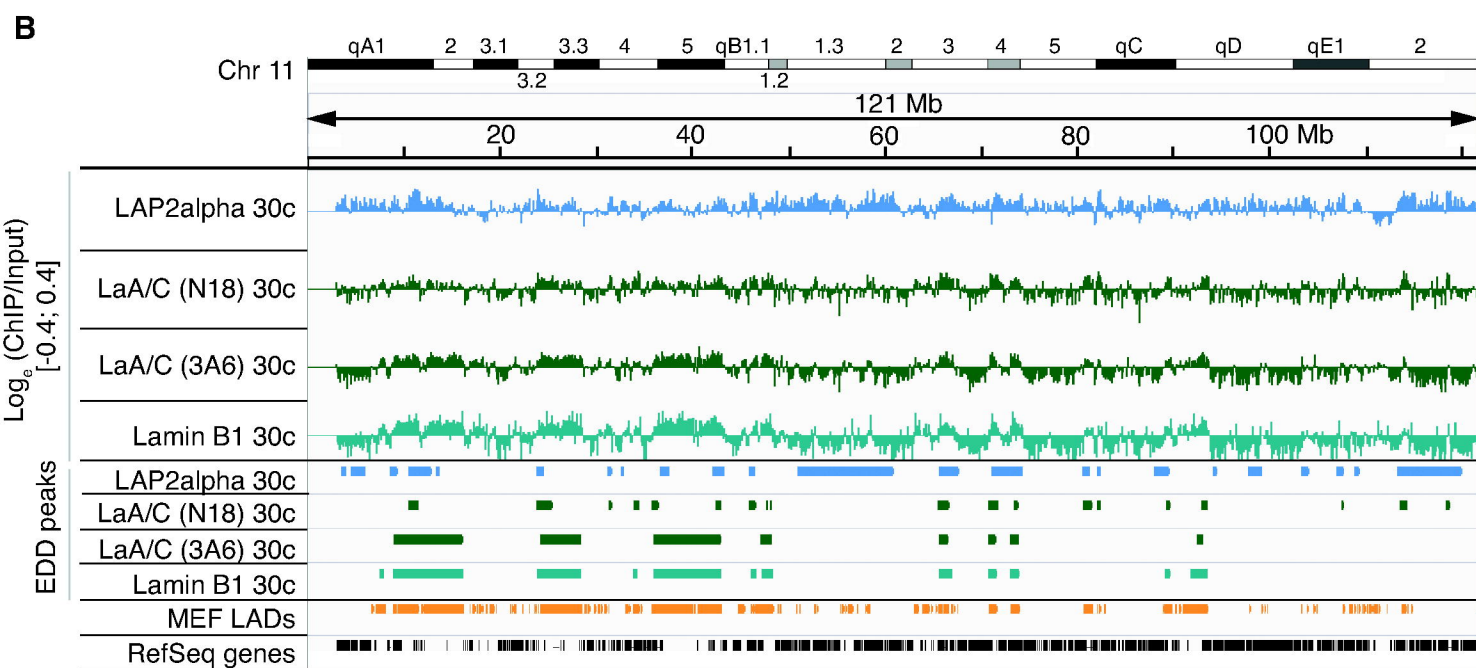
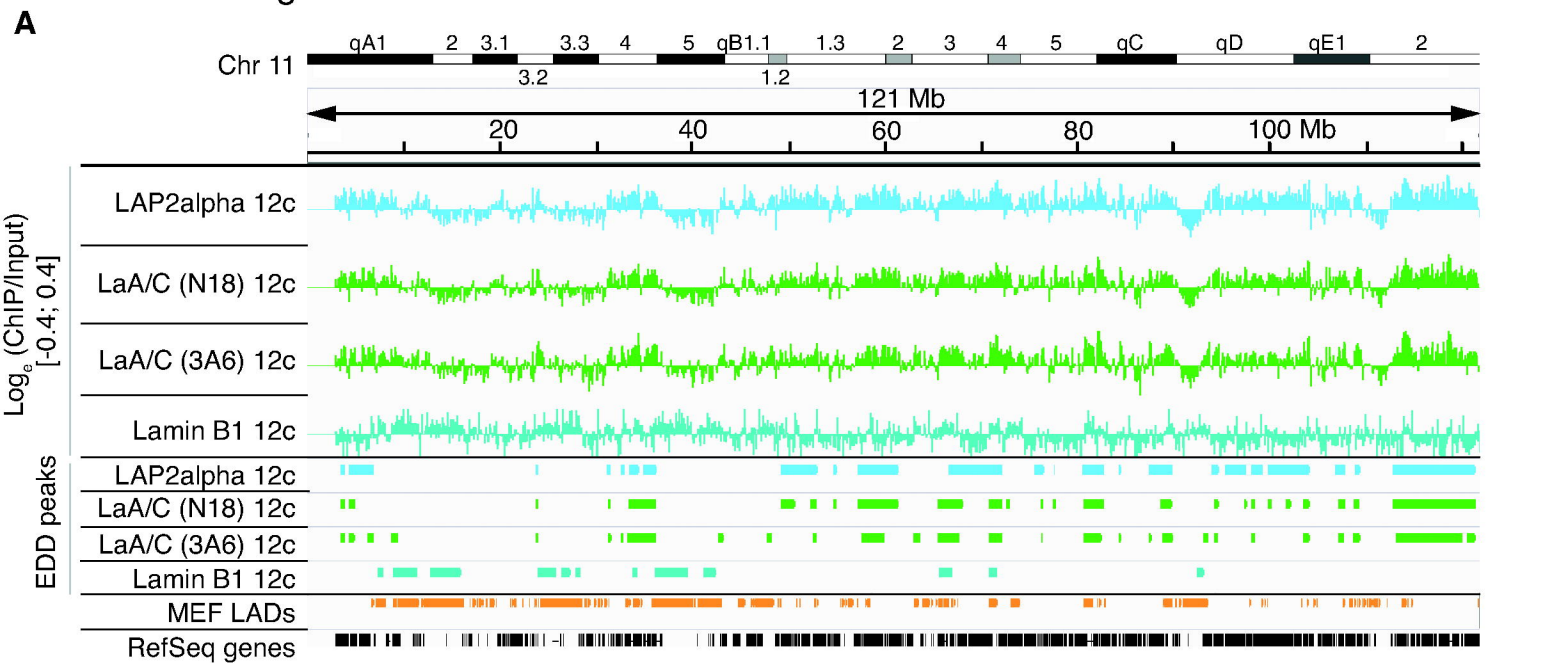
- telomeres and specific regions on chromatin during nuclear assembly. *J Cell Sci* **117**: 6117-6128.
- Dechat T, Gesson K, Foisner R. 2010b. Lamina-independent lamins in the nuclear interior serve important functions. *Cold Spring Harb Symp Quant Biol* **75**: 533-543.
- Dechat T, Korbei B, Vaughan OA, Vlcek S, Hutchison CJ, Foisner R. 2000. Lamina-associated polypeptide 2alpha binds intranuclear A-type lamins. *J Cell Sci* **113**: 3473-3484.
- Dechat T, Shimi T, Adam SA, Rusinol AE, Andres DA, Spielmann HP, Sinensky MS, Goldman RD. 2007. Alterations in mitosis and cell cycle progression caused by a mutant lamin A known to accelerate human aging. *Proc Natl Acad Sci U S A* **104**: 4955-4960.
- Edgar R, Domrachev M, Lash AE. 2002. Gene Expression Omnibus: NCBI gene expression and hybridization array data repository. *Nucleic Acids Res* **30**: 207-210.
- Gesson K, Vidak S, Foisner R. 2014. Lamina-associated polypeptide (LAP)2alpha and nucleoplasmic lamins in adult stem cell regulation and disease. *Semin Cell Dev Biol* **29**: 116-124.
- Gotic I, Leschnik M, Kolm U, Markovic M, Haubner BJ, Biadasiewicz K, Metzler B, Stewart CL, Foisner R. 2010a. Lamina-associated polypeptide 2alpha loss impairs heart function and stress response in mice. *Circ Res* **106**: 346-353.
- Gotic I, Schmidt WM, Biadasiewicz K, Leschnik M, Spilka R, Braun J, Stewart CL, Foisner R. 2010b. Loss of LAP2 alpha delays satellite cell differentiation and affects postnatal fiber-type determination. *Stem Cells* **28**: 480-488.
- Greil F, Moorman C, van Steensel B. 2006. DamID: mapping of in vivo protein-genome interactions using tethered DNA adenine methyltransferase. *Methods Enzymol* **410**: 342-359.
- Gruenbaum Y, Foisner R. 2015. Lamins: nuclear intermediate filament proteins with fundamental functions in nuclear mechanics and genome regulation. *Annu Rev Biochem* **84**: 131-164.
- Guelen L, Pagie L, Brassat E, Meuleman W, Faza MB, Talhout W, Eussen BH, de Klein A, Wessels L, de Laat W et al. 2008. Domain organization of human

- chromosomes revealed by mapping of nuclear lamina interactions. *Nature* **453**: 948-951.
- Harr JC, Luperchio TR, Wong X, Cohen E, Wheelan SJ, Reddy KL. 2015. Directed targeting of chromatin to the nuclear lamina is mediated by chromatin state and A-type lamins. *J Cell Biol* **208**: 33-52.
- Hauser C, Schuettengruber B, Bartl S, Lagger G, Seiser C. 2002. Activation of the mouse histone deacetylase 1 gene by cooperative histone phosphorylation and acetylation. *Mol Cell Biol* **22**: 7820-7830.
- Hirano Y, Hizume K, Kimura H, Takeyasu K, Haraguchi T, Hiraoka Y. 2012. Lamin B receptor recognizes specific modifications of histone H4 in heterochromatin formation. *J Biol Chem* **287**: 42654-42663.
- Kind J, Pagie L, Ortobozkoyun H, Boyle S, de Vries SS, Janssen H, Amendola M, Nolen LD, Bickmore WA, van Steensel B. 2013. Single-cell dynamics of genome-nuclear lamina interactions. *Cell* **153**: 178-192.
- Korfali N, Wilkie GS, Swanson SK, Srsen V, de Las Heras J, Batrakou DG, Malik P, Zuleger N, Kerr AR, Florens L et al. 2012. The nuclear envelope proteome differs notably between tissues. *Nucleus* **3**: 552-564.
- Kubben N, Adriaens M, Meuleman W, Voncken JW, van Steensel B, Misteli T. 2012. Mapping of lamin A- and progerin-interacting genome regions. *Chromosoma* **121**: 447-464.
- Laemmli UK. 1970. Cleavage of structural proteins during the assembly of the head of bacteriophage T4. *Nature* **227**: 680-685.
- Langmead B, Salzberg SL. 2012. Fast gapped-read alignment with Bowtie 2. *Nat Methods* **9**: 357-359.
- Lund E, Oldenburg AR, Collas P. 2014. Enriched domain detector: a program for detection of wide genomic enrichment domains robust against local variations. *Nucleic Acids Res* **42**: e92.
- Lund E, Oldenburg AR, Delbarre E, Freberg CT, Duband-Goulet I, Eskeland R, Buendia B, Collas P. 2013. Lamin A/C-promoter interactions specify chromatin state-dependent transcription outcomes. *Genome Res* **23**: 1580-1589.
- Lund EG, Duband-Goulet I, Oldenburg A, Buendia B, Collas P. 2015. Distinct features of lamin A-interacting chromatin domains mapped by ChIP-

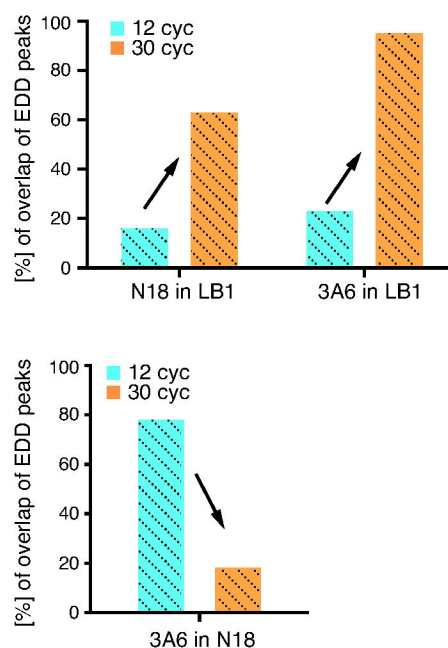
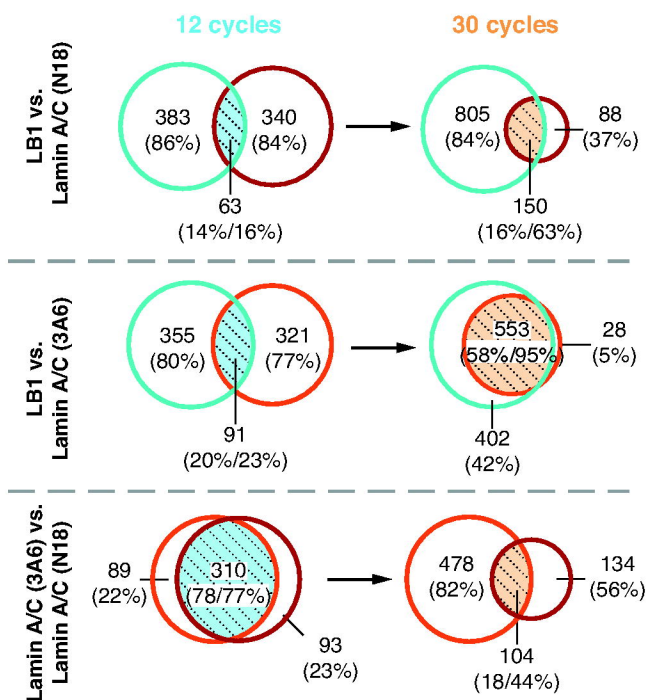
- sequencing from sonicated or micrococcal nuclease-digested chromatin. *Nucleus* **6**: 30-39.
- Martin M. 2011. Cutadapt removes adapter sequences from high-throughput sequencing reads. *EMBnetjournal* **17**.
- Mattout A, Pike BL, Towbin BD, Bank EM, Gonzalez-Sandoval A, Stadler MB, Meister P, Gruenbaum Y, Gasser SM. 2011. An EDMD mutation in *C. elegans* lamin blocks muscle-specific gene relocation and compromises muscle integrity. *Curr Biol* **21**: 1603-1614.
- McCord RP, Nazario-Toole A, Zhang H, Chines PS, Zhan Y, Erdos MR, Collins FS, Dekker J, Cao K. 2013. Correlated alterations in genome organization, histone methylation, and DNA-lamin A/C interactions in Hutchinson-Gilford progeria syndrome. *Genome Res* **23**: 260-269.
- Meuleman W, Peric-Hupkes D, Kind J, Beaudry JB, Pagie L, Kellis M, Reinders M, Wessels L, van Steensel B. 2013. Constitutive nuclear lamina-genome interactions are highly conserved and associated with A/T-rich sequence. *Genome Res* **23**: 270-280.
- Moir RD, Yoon M, Khuon S, Goldman RD. 2000. Nuclear lamins A and B1: different pathways of assembly during nuclear envelope formation in living cells. *J Cell Biol* **151**: 1155-1168.
- Naetar N, Korbei B, Kozlov S, Kerényi MA, Dorner D, Kral R, Gotic I, Fuchs P, Cohen TV, Bittner R et al. 2008. Loss of nucleoplasmic LAP2alpha-lamin A complexes causes erythroid and epidermal progenitor hyperproliferation. *Nat Cell Biol* **10**: 1341-1348.
- Nili E, Cojocaru GS, Kalma Y, Ginsberg D, Copeland NG, Gilbert DJ, Jenkins NA, Berger R, Shaklai S, Amariglio N et al. 2001. Nuclear membrane protein LAP2beta mediates transcriptional repression alone and together with its binding partner GCL (germ-cell-less). *J Cell Sci* **114**: 3297-3307.
- Pendas AM, Zhou Z, Cadinanos J, Freije JM, Wang J, Hultenby K, Astudillo A, Wernerson A, Rodriguez F, Tryggvason K et al. 2002. Defective prelamin A processing and muscular and adipocyte alterations in Zmpste24 metalloproteinase-deficient mice. *Nat Genet* **31**: 94-99.
- Peric-Hupkes D, Meuleman W, Pagie L, Bruggeman SW, Solovei I, Brugman W, Graf S, Flicek P, Kerkhoven RM, van Lohuizen M et al. 2010. Molecular

- maps of the reorganization of genome-nuclear lamina interactions during differentiation. *Mol Cell* **38**: 603-613.
- Robinson JT, Thorvaldsdottir H, Winckler W, Guttman M, Lander ES, Getz G, Mesirov JP. 2011. Integrative genomics viewer. *Nat Biotechnol* **29**: 24-26.
- Shumaker DK, Dechat T, Kohlmaier A, Adam SA, Bozovsky MR, Erdos MR, Eriksson M, Goldman AE, Khuon S, Collins FS et al. 2006. Mutant nuclear lamin A leads to progressive alterations of epigenetic control in premature aging. *Proc Natl Acad Sci U S A* **103**: 8703-8708.
- Sinensky M, Fantle K, Trujillo M, McLain T, Kupfer A, Dalton M. 1994. The processing pathway of prelamin A. *J Cell Sci* **107 ( Pt 1)**: 61-67.
- Solovei I, Wang AS, Thanisch K, Schmidt CS, Krebs S, Zwerger M, Cohen TV, Devys D, Foisner R, Peichl L et al. 2013. LBR and lamin A/C sequentially tether peripheral heterochromatin and inversely regulate differentiation. *Cell* **152**: 584-598.
- Somech R, Shaklai S, Geller O, Amariglio N, Simon AJ, Rechavi G, Gal-Yam EN. 2005. The nuclear-envelope protein and transcriptional repressor LAP2beta interacts with HDAC3 at the nuclear periphery, and induces histone H4 deacetylation. *J Cell Sci* **118**: 4017-4025.
- Towbin BD, Gonzalez-Sandoval A, Gasser SM. 2013. Mechanisms of heterochromatin subnuclear localization. *Trends Biochem Sci* **38**: 356-363.
- van Steensel B, Kind J. 2014. Stochastic genome-nuclear lamina interactions: Modulating roles of Lamin A and BAF. *Nucleus* **5**.
- Vaughan A, Alvarez-Reyes M, Bridger JM, Broers JL, Ramaekers FC, Wehnert M, Morris GE, Whitfield WGF, Hutchison CJ. 2001. Both emerin and lamin C depend on lamin A for localization at the nuclear envelope. *J Cell Sci* **114**: 2577-2590.
- Vidak S, Kubben N, Dechat T, Foisner R. 2015. Proliferation of progeria cells is enhanced by lamina-associated polypeptide 2alpha (LAP2alpha) through expression of extracellular matrix proteins. *Genes Dev* **29**: 2022-2036.
- Wilson KL, Berk JM. 2010. The nuclear envelope at a glance. *J Cell Sci* **123**: 1973-1978.
- Wilson KL, Foisner R. 2010. Lamin-binding Proteins. *Cold Spring Harb Perspect Biol* **2**: a000554.

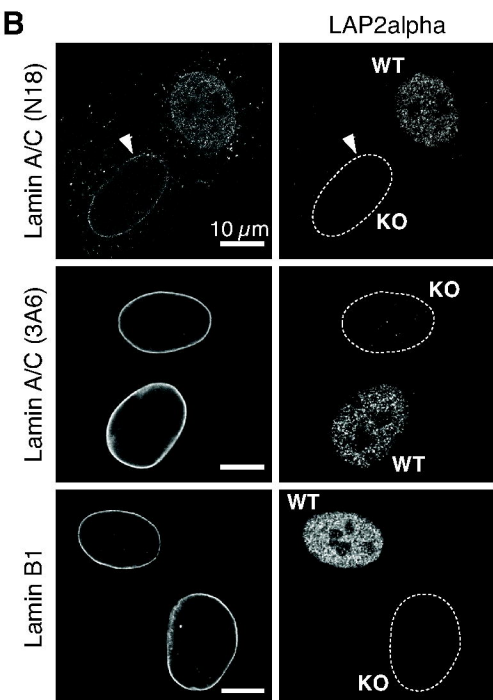
- Xu S, Grullon S, Ge K, Peng W. 2014. Spatial clustering for identification of ChIP-enriched regions (SICER) to map regions of histone methylation patterns in embryonic stem cells. *Methods in molecular biology* **1150**: 97-111.
- Ye Q, Worman HJ. 1996. Interaction between an integral protein of the nuclear envelope inner membrane and human chromodomain proteins homologous to Drosophila HP1. *J Biol Chem* **271**: 14653-14656.
- Zang C, Schones DE, Zeng C, Cui K, Zhao K, Peng W. 2009. A clustering approach for identification of enriched domains from histone modification ChIP-Seq data. *Bioinformatics* **25**: 1952-1958.
- Zhang S, Schones DE, Malicet C, Rochman M, Zhou M, Foisner R, Bustin M. 2013. High mobility group protein N5 (HMGN5) and lamina-associated polypeptide 2alpha (LAP2alpha) interact and reciprocally affect their genome-wide chromatin organization. *J Biol Chem* **288**: 18104-18109.
- Zullo JM, Demarco IA, Pique-Regi R, Gaffney DJ, Epstein CB, Spooner CJ, Luperchio TR, Bernstein BE, Pritchard JK, Reddy KL et al. 2012. DNA sequence-dependent compartmentalization and silencing of chromatin at the nuclear lamina. *Cell* **149**: 1474-1487.



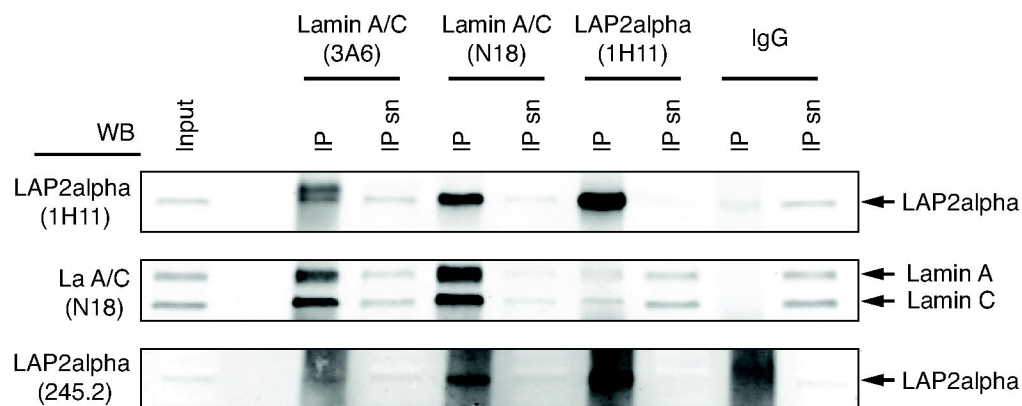
A



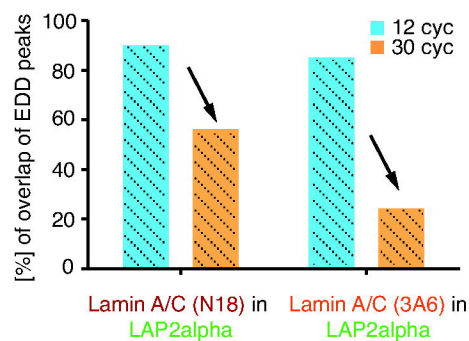
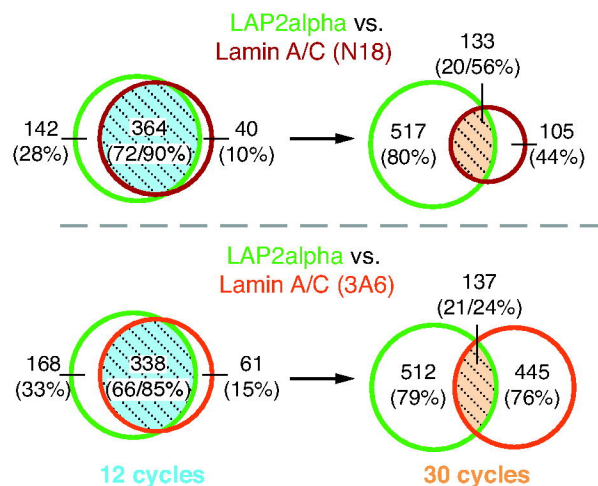
B

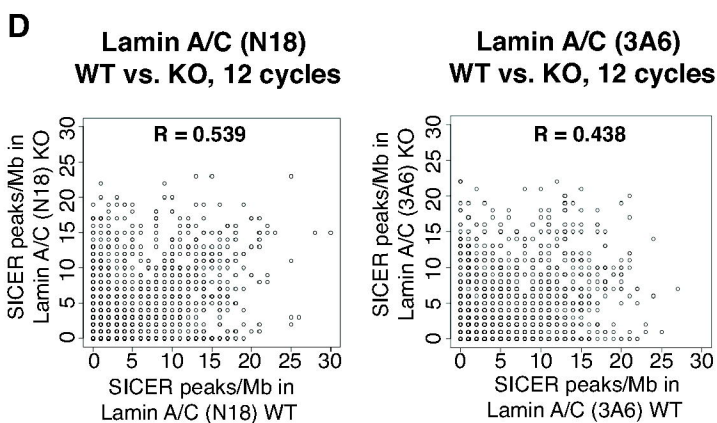
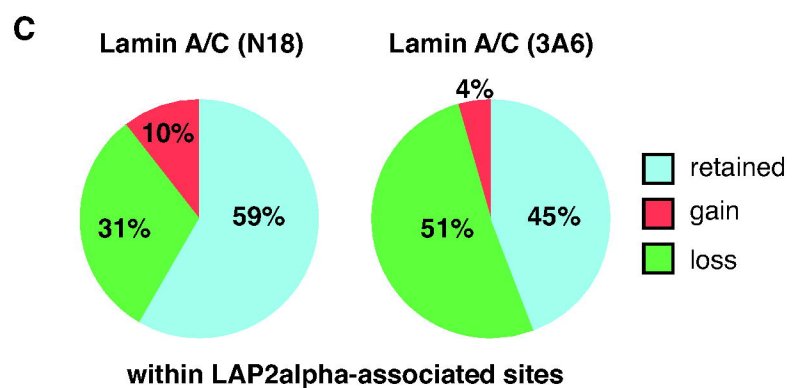
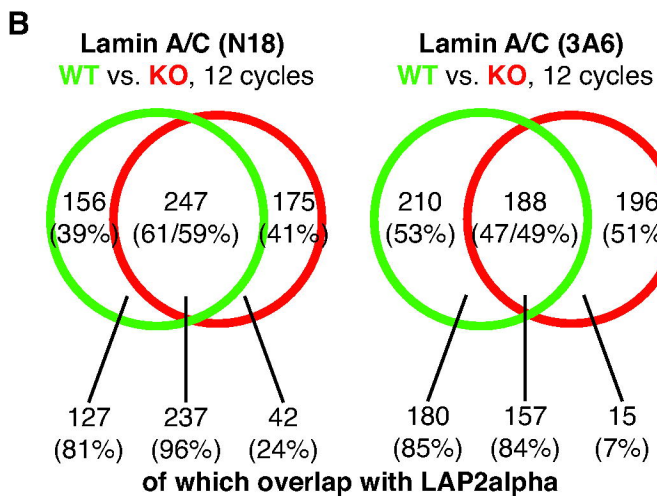
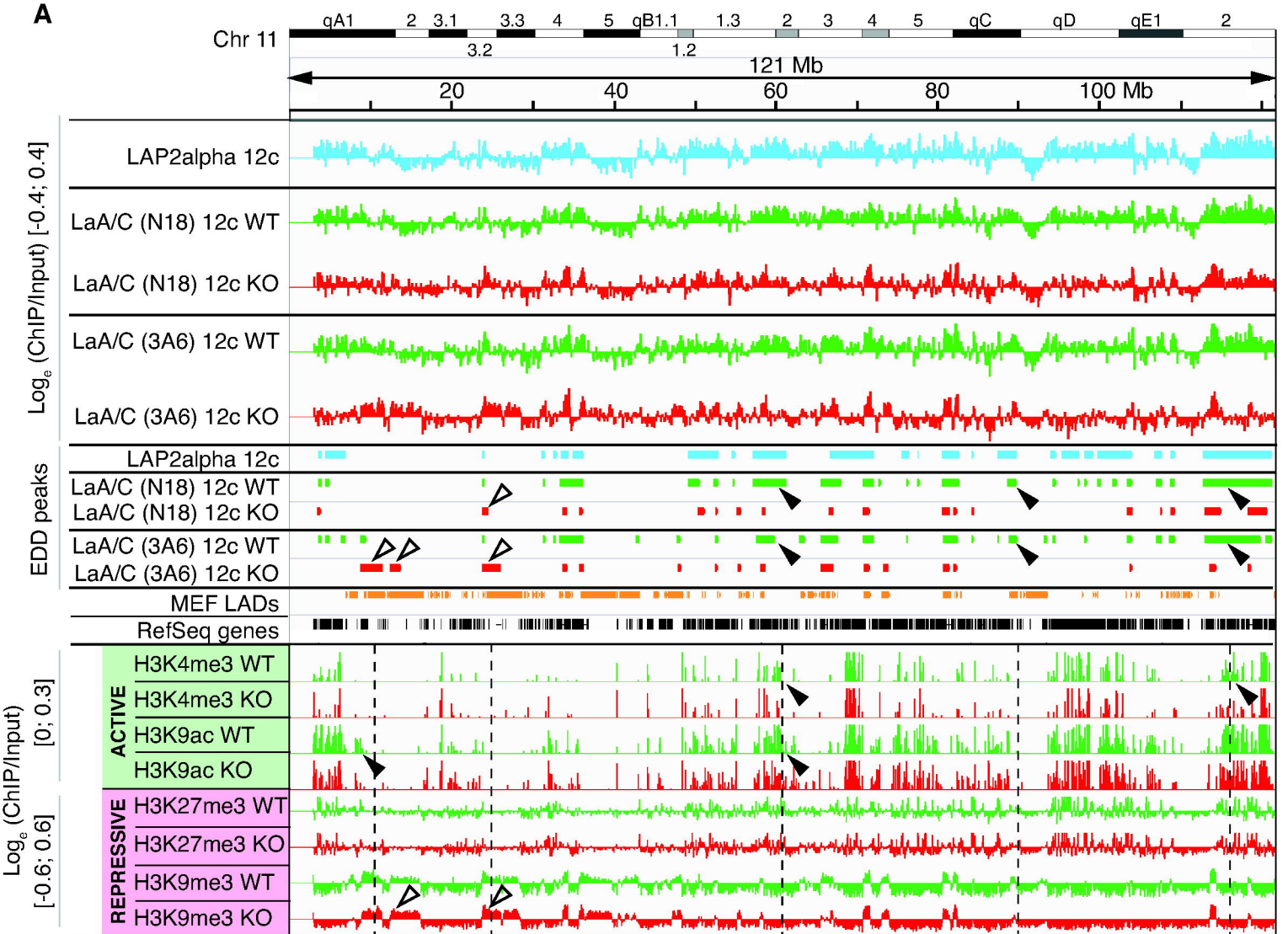


C

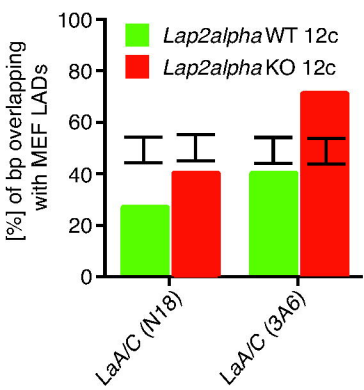


D

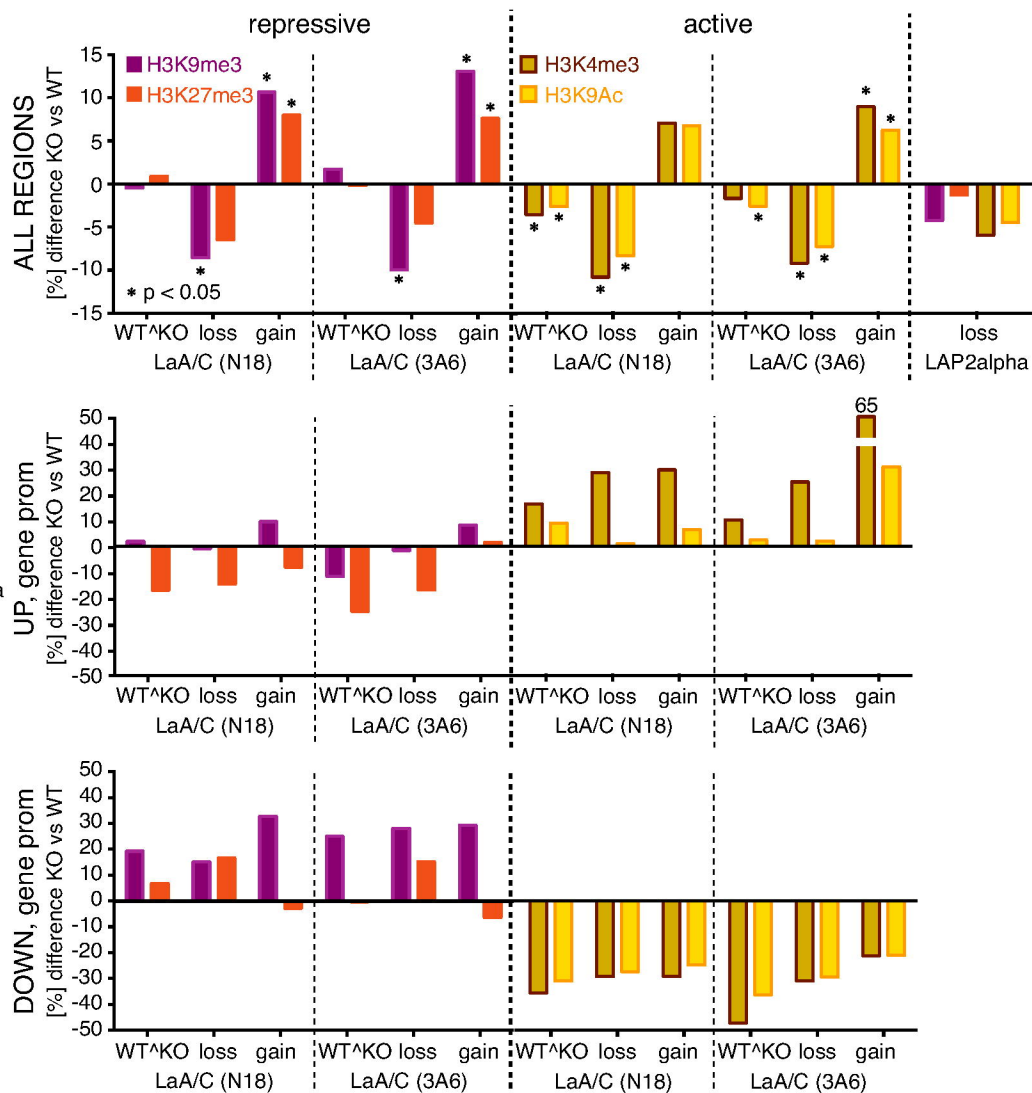




A



B



D

