



Antagonistic Regulation of mRNA Expression and Splicing by CELF and MBNL Proteins

Eric T. Wang, Amanda J. Ward, Jennifer Cherone, et al.

Genome Res. published online April 16, 2015

Access the most recent version at doi:[10.1101/gr.184390.114](https://doi.org/10.1101/gr.184390.114)

P<P	Published online April 16, 2015 in advance of the print journal.
Accepted Manuscript	Peer-reviewed and accepted for publication but not copyedited or typeset; accepted manuscript is likely to differ from the final, published version.
Open Access	Freely available online through the <i>Genome Research</i> Open Access option.
Creative Commons License	This manuscript is Open Access. This article, published in <i>Genome Research</i> , is available under a Creative Commons License (Attribution 4.0 International license), as described at http://creativecommons.org/licenses/by/4.0/ .
Email Alerting Service	Receive free email alerts when new articles cite this article - sign up in the box at the top right corner of the article or click here .



To subscribe to *Genome Research* go to:
<https://genome.cshlp.org/subscriptions>

Published by Cold Spring Harbor Laboratory Press

Antagonistic Regulation of mRNA Expression and Splicing by CELF and MBNL Proteins

Eric T. Wang^{1,2,*}, Amanda J. Ward^{3,4}, Jennifer Cherone¹, Jimena Giudice³,
Thomas T. Wang^{1,5}, Daniel Treacy¹, Nicole J. Lambert¹, Peter Freese¹, Tanvi
Saxena², Thomas A. Cooper^{3,6,7} and Christopher B. Burge^{1,2,*}

April 1, 2015

¹Department of Biology,

²Koch Institute for Integrative Cancer Research

Massachusetts Institute of Technology, Cambridge MA 02142

Departments of ³Pathology and Immunology, ⁶Molecular and Cellular Biology,
and ⁷Molecular Physiology and Biophysics,

Baylor College of Medicine, Houston TX 77030

⁴Current address: Isis Pharmaceuticals, Carlsbad CA 92010

⁵Current address: Columbia University, New York NY 10027

*Address correspondence to: et_wang@mit.edu or cburge@mit.edu

Running head: Antagonistic mRNA regulation by CELF and MBNL

Abstract

RNA-binding proteins of the conserved CUGBP1, Elav-like factor (CELFL) family contribute to heart and skeletal muscle development and are implicated in myotonic dystrophy (DM). To understand their genome-wide functions, we analyzed transcriptome dynamics following induction of *CELFL1* or *CELFL2* in adult mouse heart and of *CELFL1* in muscle by RNA-seq, complemented by crosslinking/immunoprecipitation-sequencing (CLIP-seq) analysis of mouse cells and tissues to distinguish direct from indirect regulatory targets. We identified hundreds of mRNAs bound in their 3' UTRs by both CELFL1 and by the developmentally-induced MBNL1 protein, a 3-fold greater overlap in target messages than expected, including messages involved in development and cell differentiation. The extent of 3' UTR binding by CELFL1 and MBNL1 predicted the degree of mRNA repression or stabilization, respectively, following *CELFL1* induction. However, CELFL1's RNA binding specificity in vitro was not detectably altered by co-incubation with recombinant MBNL1. These findings support a model in which CELFL and MBNL proteins bind independently to mRNAs but functionally compete to specify downregulation or localization/stabilization, respectively, of hundreds of mRNA targets. Expression of many alternative 3' UTR isoforms was altered following *CELFL1* induction, with 3' UTR binding associated with downregulation of isoform and gene. The splicing of hundreds of alternative exons was oppositely regulated by these proteins, confirming an additional layer of regulatory antagonism previously observed in a handful of cases. The regulatory relationships between CELFLs and MBNLs in control of both mRNA abundance and splicing appear to have evolved to enhance developmental transitions in major classes of heart and muscle genes.

Introduction

CELF RNA binding proteins (RBPs) play roles in early embryonic development, heart and skeletal muscle function. They are also thought to contribute to DM pathogenesis (Timchenko et al. 1996), and suggested to contribute to other diseases (Ladd 2013). The six family members present in mammals can be divided into two subfamilies: *CELF1-2*, which are expressed most highly in heart, skeletal muscle, and brain, and *CELF3-6* which exhibit more restricted expression (Dasgupta and Ladd 2012). The CELF proteins contain two N-terminal RNA recognition motifs (RRM) and one C-terminal RRM, with which they bind GU-rich RNAs, and a linker region termed the ‘divergent domain’ separating RRM2 and RRM3 that is involved in regulation of alternative pre-mRNA splicing and mRNA decay (Han and Cooper 2005; Vlasova et al. 2008).

During normal development, CELF1 and CELF2 proteins are highly expressed in early embryonic stages, and are then downregulated more than 10-fold in skeletal muscle (Ladd et al. 2005) and heart (Kalsotra et al. 2008) during postnatal development, remaining at low levels in adult tissues. This developmental downregulation occurs through multiple mechanisms, including repression by microRNAs (miRNAs) and reductions in protein phosphorylation, which destabilizes the protein (Kalsotra et al. 2010; Kalsotra et al. 2014). However, in DM type 1 (DM1), CELF1 protein levels increase in heart and skeletal muscle (Timchenko et al. 2004) as the protein is stabilized by PKC-mediated phosphorylation (Kuyumcu-Martinez et al. 2007).

The combination of increased CELF levels and MBNL sequestration by CUG repeat RNA is thought to be responsible for much of DM pathology by reversing the developmental changes in both proteins toward embryonic levels, shifting splicing of regulatory targets toward fetal isoforms (Philips et al. 1998; Ho et al. 2004; Lin et al. 2006; Kuyumcu-Martinez et al. 2007). Expression of *CELF1* in adult mice recapitulates a subset of the mis-regulated splicing events observed in DM1 skeletal muscle and heart (Kalsotra et al. 2008; Kalsotra et al. 2010; Ward et al. 2010). Out of 44 developmentally regulated alternative splicing events in heart development that were investigated, 24 were found to revert toward embryonic splicing levels in response to inducible expression of *CELF1* in the adult heart or in mice lacking *Mbnl1* (Kalsotra et al. 2008). A long-standing question has been whether CELF and MBNL splicing factors share regulatory targets, and whether they synergize or antagonize. The half dozen events known to be

regulated by both CELF and MBNL proteins, including *H2afy* exon 6 and *Mbnl2* exon 8, are regulated antagonistically (Ho et al. 2005; Dhaenens et al. 2008; Kalsotra et al. 2008). However, in a study analyzing CELF motifs present near *Mbnl*-responsive alternative exons, evidence for widespread antagonistic regulation was not observed (Du et al. 2010).

CELF proteins are present in both cytoplasm and nucleus and play roles in deadenylation, RNA stability and translation as well as splicing (Paillard et al. 2003; Timchenko et al. 2004; Vlasova et al. 2008). Tethering CELF1 to an mRNA is sufficient for destabilization of the mRNA (Barreau et al. 2006), and addition of GU-rich sequences to an RNA confers destabilization following *CELF1* overexpression (Masuda et al. 2012a). Human CELF1 is 88% identical to the *Xenopus* homolog Embryo Deadenylation Element binding protein (EDEN-BP) and can functionally replace it, binding to the EDEN element to control polyA tail length and aiding in rapid deadenylation of maternal mRNAs after fertilization (Paillard et al. 2003). CELF1 interacts with polyA-specific ribonuclease (PARN) in HeLa cell extracts to promote deadenylation of *FOS* and *TNF* transcripts (Moraes et al. 2006). Furthermore, siRNA-mediated knockdown of *CELF1* in HeLa cells and myoblasts led to the stabilization of a set of normally rapidly degraded transcripts bound by CELF at GU-rich elements (GRE) and GU-repeats (Vlasova et al. 2008; Ji et al. 2009; Lee et al. 2010; Rattenbacher et al. 2010). It is possible that abnormal upregulation of CELF proteins in adult tissues in DM1 could impact the stability of many transcripts and contribute to DM pathology.

To investigate the functional significance of the postnatal downregulation of CELF in heart and skeletal muscle tissues, we inducibly expressed *CELF1* in adult mouse heart or muscle or *CELF2* in adult heart and performed a time series RNA-seq analysis following induction, complemented by high-throughput biochemical assays and comparisons to available data for MBNL1. Our observations lead to a model in which CELF and MBNL proteins compete to specify different mRNA fates so as to change the expression and localization of hundreds of mRNAs during development.

Results

Identification of hundreds of *CELF*-responsive exons

We performed strand-specific paired-end RNA sequencing (RNA-seq) of poly(A)⁺ RNA from skeletal muscle or heart of mice in which *CELF1* was induced, or heart of mice in which *CELF2* was induced at several time points post-induction, and from control mice, in biological triplicate. The *CELF1* mice have been described previously (Koshelev et al. 2010; Ward et al. 2010). The *CELF2* mouse model was newly developed here and is described in Methods. All mice used are summarized in Supplemental Table S1. Human *CELF1* or *CELF2* transgenes were induced in mice by administration of doxycycline, in separate mouse lines for each tissue/protein pair, and reached levels between 5- and 10-fold above endogenous levels (Fig. S1A,B). The level of *CELF1* mRNA increased strongly before declining at the end of the time course, likely as a secondary effect of heart pathology on the *Myh1* promoter that drives *rtTA* (Lowe et al. 1997). However, *CELF1* protein levels consistently increase in these mice at least 8-fold in skeletal muscle (Ward et al. 2010) and ~4-fold in heart and remain high through at least day 7 (Koshelev et al. 2010). Heart pathology was not observed in the *CELF2* mouse, and mRNA and protein levels increased throughout the time course (Fig. S1C,F). RNA was isolated from three tet-inducible mice each at 12 hours (h), 24 h, 72 h, and 7 days (d) following induction, and from three control mice lacking tet-inducible *CELF1* or *CELF2* transgenes, treated with doxycycline for 72 h. The MISO software for statistical inference of splicing changes using RNA-seq data (Katz et al. 2010) was used to estimate a percent spliced in (PSI or Ψ) value for each cassette (skipped) exon, which estimates the fraction of a gene's messages that include the exon. We also calculated Ψ values for alternative 5' and 3' splice sites, and retained introns. For each comparison of Ψ between samples, we calculated a Bayes Factor (BF), representing the ratio of the likelihood of the hypothesis that Ψ values differ to that of the null hypothesis of no change in Ψ , and used BFs to identify differentially regulated exons.

We identified thousands of exons whose Ψ values changed between time points at a BF cutoff of 5, a value supported by previous studies of RBPs (Katz et al. 2010). For example, exon 3 in *Tmed2* had a Ψ of 79% in control heart, but decreased upon *CELF1* induction to 13% at seven days (Fig. 1A). To identify splicing events that change monotonically over time, we

developed a permutation-based method that could be applied to time course data. We ordered samples chronologically, and for each event compared all pairs of samples from different time points, tallying the number of comparisons representing significant increase or significant decrease in Ψ (at $\text{BF} > 5$). We calculated a quantity called δ , the number of significant positive $\Delta\Psi$ values (increases over time) minus the number of significant negative $\Delta\Psi$ values (Fig. S2A). To assess statistical significance, we recalculated δ after randomly permuting the sample labels. Repeating this process 100 times, we generated a null distribution, and derived a “monotonicity Z-score” (MZ), defined as $\text{MZ} = (\delta - \mu) / \sigma$, where μ and σ are the mean and standard deviation of the null distribution of δ values, respectively. Large positive or negative MZ values indicate consistent increase or decrease, respectively, in the inclusion of an alternative exon over the time course. (MZ scores and Ψ values of alternative exons for all experiments are listed in Table S2.) We observed 627 and 825 exons responsive to *CELF1* induction at a MZ score of 1.8 in heart and skeletal muscle, respectively.

About 30% of splicing changes in heart development respond to *CELF1* induction

We next sought to understand the functions of CELF proteins in different tissues and developmental stages. Comparing $\Delta\Psi$ values of monotonically changing (high MZ) skipped exons between *CELF1*-induced heart and *CELF1*-induced skeletal muscle, we observed a high correlation ($R_{\text{Spearman}} = 0.64$), suggesting that the functions and regulatory targets of CELF1 in these tissues are quite similar (Fig. 1B). To ask about functions of different CELF family members, we compared splicing changes in heart following induction of *CELF1* or *CELF2*. This comparison yielded a moderate positive correlation ($R_{\text{Sp}} = 0.47$), suggesting similar but not necessarily identical splicing functions (Fig. 1C).

To explore connections to developmental roles of CELF proteins, we compared splicing in *CELF1* heart to changes that occur during normal heart development. Developmental changes were analyzed by use of an RNA-seq time series including embryonic day 17 (E17), postnatal (PN) day 1, PN 10, PN 28, and adult, during which CELF1 protein levels fall by > 10 -fold (Kalsotra et al. 2008). In all, 234 alternatively skipped exons changed monotonically in heart development and/or following *CELF1* induction. Splicing of 198 (85%) of these exons changed in the opposite direction following *CELF1* induction as they did during heart development, with a fairly strong negative correlation ($R_{\text{Sp}} = -0.59$, Fig. 1D). Thus, *CELF1* induction triggers

widespread reversal of heart developmental splicing, and suggests that normal reductions in CELF activity during heart development may contribute to a substantial portion – perhaps 30% (Fig. S2B) – of the splicing changes that occur during normal heart development (Kalsotra et al. 2008; Giudice et al. 2014).

Over two hundred exons are regulated antagonistically by CELF and MBNL proteins

Six mouse exons (Kalsotra et al. 2008) and at least one human exon (Ho et al. 2004) are known to be regulated antagonistically by CELF1 and MBNL1. Confirming and extending this trend, we identified dozens of additional exons regulated by both factors. *Mbnl1* depletion (Wang et al. 2012) mimicked a reversal of many splicing changes that occur during heart development ($R_{Sp} = -0.47$, Fig. 1E). In skeletal muscle, we detected 120 exons whose splicing was responsive to both proteins, of which 78 (65%) were regulated in an antagonistic fashion (Fig. 1F; exons responsive to both factors are listed in Table S3). Extending this analysis to additional tissues and cell lines, and comparing to heart development, we found that exons responsive to induction of *CELF1* or *CELF2* showed a strong and quite general tendency to also respond to *Mbnl1* depletion and to be developmentally regulated (Fig. 1G). Furthermore, the direction of splicing regulation tended to oppose normal developmental transitions, with both *Mbnl1* depletion and *CELF1* induction often reversing developmental changes (Fig. 1H, Table S3).

The observed splicing antagonism might result from direct effects of CELF1 on splicing or potentially from indirect effects on MBNL expression by CELF proteins. We found that *CELF1* induction in heart and muscle yielded only modest changes in the mRNA levels of *Mbnl1* (up 15% in heart, down 10% in muscle) and *Mbnl2* (up 9% in heart, down 12% in muscle) by RNA-seq FPKM, and did not change inclusion of *Mbnl1* exon 5, which can regulate nuclear-cytoplasmic distribution of MBNL1 (Lin et al. 2006) (Fig. S1D,E). Furthermore, *CELF1* over-expression in C2C12 mouse myoblasts did not detectably alter MBNL1 protein levels (Fig. S1G), or change the localization of MBNL1 by Western blot (data not shown). Finally, inclusion levels of exons bound and regulated by MBNL1, but not bound by CELF1, showed no tendency to change in a direction consistent with an overall decrease in MBNL1 activity (not shown). These observations indicate that antagonistic regulation of many MBNL-dependent splicing events by CELF proteins results predominantly from direct effects on splicing rather than indirectly through regulation of MBNL activity.

In total, 206 alternative exons were responsive to both *Mbnl1* depletion and *CELF1* induction in muscle and/or heart. These exons were enriched for several Gene Ontology categories, including “cell differentiation”, “multicellular organismal development”, “microtubule cytoskeleton”, and “cell junction”, suggesting roles in developmental remodeling of the heart (Table S4). Furthermore, 124 of these exons (60%) preserved the translational reading frame (compared to a background of 44% of alternative exons, $p < 0.001$, binomial test), suggesting that the splicing activities of CELF and MBNL proteins are predominantly involved in shaping the spectrum of protein isoforms expressed in the heart. These observations provide genome-wide evidence for the principle that CELF and MBNL proteins exert opposing effects on the splicing of a large cohort of exons. They also expand the number of developmentally regulated CELF-/MBNL-responsive exons several-fold.

Transcriptome-wide binding locations of CELF1 in heart, muscle, and myoblasts

To identify transcript sites bound by CELF1, we performed CLIP-seq analysis using the 3B1 mouse monoclonal antibody against the endogenous CELF1 protein, yielding 1.6 million (M), 1.0 M, and 1.6 M reads uniquely mapping to the genome and splice junctions in 16 week-old C57BL/6 heart, 16 week-old C57/BL6 muscle, and C2C12 myoblast samples, respectively, after collapsing identical reads. Mapping occurred predominantly to transcribed regions, with enrichment for introns and/or 3' UTRs (Fig. S3A), consistent with previous studies (Masuda et al. 2012b).

CELF1 binding locations were consistently observed across different tissues, for example in the 3' UTR of the myeloid-associated differentiation marker gene, *Myadm* (Fig. 2A). CELF1 binding density along mRNAs, assessed in 5 nucleotide (nt) windows, was highly correlated across tissues and cell lines, and distinct from that observed for MBNL1 (Fig. 2B). Controlling for pre-mRNA length and gene expression, CELF1 CLIP clusters were enriched for UGU-containing pentanucleotides (5mers) in heart and other tissues (Fig. 2C, Fig. S3B). Introns flanking alternative exons with CLIP clusters within 1 kb from either splice site were more highly conserved across species, in particular in the downstream intron, supporting their *in vivo* function (Fig. 2D).

To more precisely map sites of CELF1 binding, we measured the frequency of “crosslink-induced substitutions” (CIS) – positions where CLIP-seq reads differ from the

genome (Kishore et al. 2011; Wang et al. 2012) – at each position within CLIP clusters. We noted that guanines with high CIS showed biases in flanking bases, with the –1 base preceding the substituted guanine increasingly biased towards uracil as CIS frequency increased (reaching ~61% in heart), and the base at the +1 position was also biased toward uracil (Fig. 2E and Fig. S3C). The implied CIS-enriched motif, UGU, resembles the motifs observed in Figure 2C and in previous studies of CELF1 binding affinity (Marquis et al. 2006; Lambert et al. 2014), suggesting that frequently substituted guanines are highly enriched for sites of direct crosslinking to CELF1 protein.

Context-dependent regulation of splicing by CELF1

Exons whose splicing changed after *CELF1* induction were enriched for CELF1 CLIP clusters (Fig. S4). To determine an RNA map describing the splicing regulatory activity of CELF1, we analyzed the location of CELF1 clusters relative to exons responsive to *CELF1* over-expression in heart and/or muscle. We found that cassette alternative exons bound by CELF1 were more likely to be repressed following *CELF1* induction in heart and muscle (Fig. 2F), with 80-85% of exons with MZ score > 1.5 being repressed versus 15-20% being activated. Though we had reasonable statistical power, we did not observe a consistent trend toward repression or activation of exons bound by CELF1 in the upstream or downstream introns. These observations suggest that exonic binding by CELF family members may directly repress splicing, while the direction of splicing regulation resulting from intronic binding may depend on other variables such as RNA structure or cooperation or antagonism with other RBPs (Dembowski and Grabowski 2009; Goo and Cooper 2009).

To directly test whether CELF1 could repress splicing when bound to a cassette exon, we fused the C-terminal “divergent domain” of CELF1 (omitting the RRMs) to two different Pumilio (Puf) domains, each recognizing a distinct 8-base Puf motif, as in (Wang et al. 2009a). We expressed these constructs in Hela cells, along with a splicing reporter (Xiao et al. 2009) containing either cognate or non-cognate Puf motifs within the cassette exon, and used quantitative RT-PCR to assess splicing changes (Fig. 2G). We found that expression of CELF1-Puf fusion decreased Ψ from ~25% to ~12% when paired with the cognate Puf motif, but had negligible effect when paired with the non-cognate motif. Thus, recruitment of a single CELF1 protein molecule to an exon appears sufficient to reduce splicing by double-digit percent values

in this system. Natural regulatory targets often have multiple CELF1 binding sites; recruitment of multiple CELF1 proteins is likely to magnify the impact on splicing, in the mode of other splicing regulatory factors (Matlin et al. 2005). Control RS domain-Puf fusions activated splicing, as expected (Fig. 2H) (Wang et al. 2009a). These observations indicate that tethering the CELF1 divergent domain to an exon is sufficient to repress its splicing.

Dose-dependent downregulation of expression associated with CELF1 binding to 3' UTRs

We observed extensive CELF1 binding to 3' UTRs, with increased density upstream of the cleavage and polyadenylation site (PAS) (Fig. 3A). Consistent with the established activity of CELF1 in binding mRNAs and recruiting cytoplasmic deadenylases (Vlasova-St Louis et al. 2013), binding density increased close to the PAS on the upstream side and fell to background levels just downstream of the PAS site in heart, muscle, and myoblast. Increased phylogenetic conservation was observed for 3' UTRs containing CELF1 CLIP clusters, relative to 3' UTRs with similar length and expression level, suggesting that these mRNAs are enriched for conserved functional motifs or structures (Fig. 3B). Gene ontology analysis of 3' UTR binding targets of CELF1 revealed enrichment of proteins related to muscle structures such as M band and I band, and factors involved in vesicle and protein transport, in both heart and muscle (Table S5).

Analyzing gene expression globally, we observed that mean expression of CELF1-bound mRNAs decreased substantially at 7 days after *CELF1* induction relative to genes not bound by CELF1 (Table S6). For example, the *Cln1* mRNA, which had prominent CELF1 binding clusters in its 3' UTR, decreased in expression 50-70% from its initial level 7 days after *CELF1* induction, in both muscle (Fig. 3C) and heart (Table S6). Furthermore, the average magnitude of target downregulation increased monotonically with the density of CLIP clusters in the 3' UTR, reaching 1.4-fold and 2-fold in heart and muscle, respectively, for messages with 4 or more CLIP clusters per kb of 3' UTR (Fig. 3D). The consistent association between binding and downregulation, and the “dose-response” effect observed in Figure 3D both support a direct role for CELF1 in target mRNA repression.

We expected similar levels of *CELF1*-mediated target repression to occur in heart and muscle, given that the level of *CELF1* induction was similar in both tissues (Fig. S1) (Koshelev et al. 2010; Ward et al. 2010). However, the magnitude of target downregulation in heart was

consistently only about half of that observed in muscle for messages with similar CLIP density. This difference might be related to a pattern we observed in which targets of miRNAs were de-repressed in the heart following CELF1 induction (Fig. S5).

CELF1 binding to alternative 3' UTRs is associated with isoform-specific repression

Many mammalian genes end with more than one polyadenylation sites (PAS), yielding “tandem UTR” isoforms, differing in the length of their 3' UTRs. We observed many instances of altered 3' UTR isoform abundance following *CELF1* induction in heart and muscle. For example, the *Cnih4* gene, a member of the Cornichon Family AMPA Receptor Auxiliary Proteins involved in the selective transport and maturation of TGF-alpha family proteins, contains multiple tandem alternative PAS that are used in these tissues. CELF1 CLIP clusters are located in the extension region of the *Cnih4* 3' UTR, between the two PAS (Fig. 4A). The relative abundance of the longer isoform relative to total *Cnih4* mRNAs was ~85% in adult heart and ~75% in muscle, but decreased monotonically in both tissues following *CELF1* induction to ~30% and 40%, respectively (Fig. 4A), consistent with CELF1-mediated downregulation of the longer isoform. Our genome-wide analysis revealed that 57 tandem UTR events contained at least 3 CELF1 clusters in the extension region and zero clusters within the core (shared) region; of these, ~75% followed the pattern of *Cnih4*, exhibiting decreased abundance of the longer isoform relative to the shorter isoform following *CELF1* induction. Across other combinations of binding sites, a consistent trend was observed with higher relative abundance of CELF1 clusters in extension versus core regions associated with greater relative decline in distal isoform expression (Fig. 4B).

Changes in tandem UTR expression associated with CELF1 binding could in principle result from regulation of cleavage and polyadenylation to produce less of the distal PAS isoform or by differential regulation of the stabilities of the isoforms. If regulation occurs by the latter mechanism, overall gene expression should decrease following *CELF1* induction in proportion to the extent of binding in the core and extension regions, with binding in the core exerting a stronger effect, since the core region is shared by both isoforms. Our analysis of expression changes of tandem UTR genes revealed exactly this: following induction, gene expression decreased with the number of CELF1 CLIP clusters in either region (Fig. 4C). Using a linear model, we compared magnitude of downregulation associated with extension and core sites, and

found that sites in the core were associated with downregulation of mRNA expression by $6.9 \pm 2.7\%$ (95% CI) per site, and sites in the extension were associated with $2.7 \pm 2.5\%$ downregulation. Because of their presence in both long and short isoforms, core sites are expected to exert stronger effects on overall gene expression than sites in the extension, as observed. Therefore, the effects of CELF1 on tandem UTR isoform expression can be explained based on the factor's known ability to destabilize mRNAs via recruitment of deadenylases without needing to invoke a potential activity in regulating cleavage and polyadenylation.

In thousands of other mammalian genes, a combination of alternative splicing and alternative PAS usage gives rise to alternative last exons (ALEs) (Fig. 4D). The distinct 3' UTRs of ALEs provide natural reporters of 3' UTR function, since they generally have little or no effect on the ORF. For over 1000 genes, we observed a monotonic change in the relative expression of ALE isoforms following *CELF1* induction in muscle. The ALE isoform exhibiting greater CELF1 binding tended to be downregulated, and the magnitude of this bias increased as the difference in the number of sites increased (Fig. 4D). A similar bias was observed in ALE pairs lacking CELF1 binding within 500 nt of each alternative splice site (Fig. S6), suggesting that changes in ALE abundance do not commonly result from regulation of splicing by CELF1. Furthermore, as was observed for tandem UTRs, increased CELF1 binding was associated with increased mRNA downregulation (Fig. 4E), with an average magnitude of $5.9 \pm 1\%$ (95% CI) per CLIP cluster, consistent with mRNA destabilizing activity. Together, the consistent pattern of downregulation of mRNAs (Fig. 3D) and of specific mRNA isoforms (Fig. 4B-E) associated with CELF1 binding to 3' UTRs provides evidence of widespread direct effects of binding on mRNA expression and identifies numerous instances of gene- and isoform-specific regulation.

Evidence for CELF1-mediated regulation of alternative 3' UTR isoforms in development

The dramatic changes in CELF1 levels that occur during heart development led us to ask whether these 3' UTR isoforms are often developmentally regulated. Comparing changes in 3' UTR isoform abundance during heart development to changes following *CELF1* induction in heart, we observed a strong negative correlation ($R_{Sp} = -0.52$) (Fig. 4F). Therefore, as observed at the level of splicing, *CELF1* induction tends to reverse isoform changes that occur during normal heart development. This negative correlation held whether analyzing *CELF1* induction in heart or skeletal muscle, and whether analyzing tandem UTRs or ALEs (Fig. 4G). The

hundreds of 3' UTR isoforms involved in these patterns suggests that developmental reductions in CELF1 activity underlie a substantial fraction of 3' UTR isoform changes that occur during heart development.

Antagonistic regulation of mRNA expression by CELF and MBNL proteins

In addition to their nuclear functions in RNA splicing, MBNL proteins also exert cytoplasmic functions, targeting 3' UTR-bound mRNAs for localization to membrane destinations and promoting translation of targeted messages (Adereth et al. 2005; Wang et al. 2012). To ask whether this function might be related to mRNA repression by CELF proteins, we compared CELF1 and MBNL1 3' UTR binding targets. We observed over a thousand 3' UTRs bound by both CELF1 and MBNL1 (with at least 2 CLIP clusters for each factor), three times as many as expected by chance ($p < 1e-48$, Fisher's exact test; Fig. 5A; CLIP clusters are listed in Table S7). Given that gene expression level impacts the power to detect CLIP binding, we assessed the fold enrichment of co-binding relative to independence in sets of genes binned by expression level, and observed as well as expected numbers of shared targets are shown in the figure. These genes were enriched for a number of GO categories, including categories related to cytoskeleton such as "actin cytoskeleton organization", and to development, such as "mesoderm formation", "patterning of blood vessels", "ventricular septum development" and other categories (Table S8), suggesting important developmental functions. These observations led us to explore whether CELF and MBNL might exert antagonistic, or synergistic, effects on mRNA levels.

To assess possible functional relationships between the effects of CELF and MBNL proteins on expression, we assessed gene expression changes for sets of genes grouped by extent of CELF1 and MBNL1 binding. Expression changes following *CELF1* induction exhibited a strong dependence on the ratio of CELF1 to MBNL1 binding sites: greater CELF1 binding was associated with strong (up to ~2-fold) average down-regulation, messages with similar numbers of CELF1 and MBNL1 clusters exhibited little change, and those with greater MBNL1 binding showed increased expression (Fig. 5B). These data suggest that MBNL binding can protect a message from CELF-mediated repression. The highly consistent pattern in which each additional CELF binding site conferred reduced expression, while each additional MBNL binding site conferred increased expression suggest that MBNL1 and CELF1 compete for co-bound mRNAs to target them for different fates. The set of mRNAs that: (i) were down-

regulated upon *CELF1* induction; (ii) are bound by both CELF1 and MBNL1; and (iii) changed their localization upon *Mbnl* depletion in the expected direction (away from membrane and towards the insoluble compartment, based on our previous study (Wang et al. 2012)) included *Cpe*, *Igfbp5*, *Kcnj2* and *Sobp* (see Discussion).

Within the set of mRNAs not detectably bound by CELF1, the up-regulation of mRNAs bound more strongly by MBNL1 relative to less-bound messages was unexpected. One possible explanation is that this signal derives from CELF1 CLIP false negatives, i.e. messages that are bound by CELF1 but which failed to crosslink efficiently (or failed to be recovered in our CLIP-seq data for other technical reasons). Another possibility is that CELF proteins may exert a general non-specific or low-specificity mRNA decay-promoting activity at high levels, and that MBNL binding protects against this effect as well as the effects of specific CELF1 binding.

To further explore the relationship between CELF1 and MBNL1 proteins, we analyzed the relative locations of CELF1 and MBNL1 binding sites in 3' UTRs. We found that sites bound by CELF1 and MBNL1 tended to cluster together more than expected, relative to randomly placed clusters (Fig. 5C; $p < 1.8e-55$ by Kolmogorov-Smirnov (KS) test). This proximity effect remained highly significant when performing additional analyses that preserved the locations of CELF1 and MBNL1 binding sites but permuted protein identity, a treatment which controls for variations in local base composition and accessibility along mRNAs (Fig. S7A).

To ask whether functional antagonism between MBNL1 and CELF1 might depend on binding site proximity, we examined the effects of *CELF1* induction on messages with proximal (≤ 50 nt) or distal (> 50 nt) pairs of CELF1 and MBNL1 binding sites. The presence of a distal MBNL1 site was sufficient to abrogate the repression normally associated with presence of a CELF1 site, but presence of a proximal MBNL1 site lacked such a protective effect (Fig. 5D). These trends extended to messages containing multiple CELF1 sites. Comparing sets of mRNAs with the same distributions of CELF1 site counts, and exactly one MBNL1 site, those with a greater number of proximal CELF1/MBNL1 pairs were more strongly downregulated following *CELF1* induction (Fig. S5B). This phenomenon of “local inhibition” of MBNL1’s activity by CELF1 suggests that CELF1 can bind to messages when MBNL1 is bound nearby, and is readily explainable by either of two models: (i) “local inhibition of binding”, in which inhibition results simply from CELF1 inhibiting nearby binding of MBNL1, either directly through steric

hindrance or indirectly via effects on local RNA structure; or (ii) “local inhibition of function”, in which occupancy of CELF1 binding sites proximal to bound MBNL1 antagonizes the localization/stabilization function conferred by MBNL1 without affecting MBNL’s binding.

Under either model, mRNAs containing a proximal pair of MBNL and CELF sites is expected to be more responsive to developmental changes in CELF and MBNL levels than messages containing distal pairs of sites. To explore this idea, we assessed developmental changes in expression of mRNAs grouped by binding site count and presence of proximal or distal CELF/MBNL site pairs (Fig. 5E). Overall, we observed moderate de-repression in proportion to the number of CELF sites present, and repression when MBNL sites exceeded CELF sites. This pattern reverses the pattern observed Figure 4B, as expected given the downregulation of CELF1 during heart development. Moreover, messages containing proximal CELF/MBNL pairs were de-repressed more strongly than those containing exclusively distal pairs, consistent with the local inhibition phenomenon observed in Figure 5D. Together, these data indicate that the regulatory rules that govern CELF1 function in heart development are similar to those observed in the transgenic mouse model.

No evidence for direct antagonism of binding for CELF and MBNL proteins

To help distinguish between the “local inhibition of binding” and “local inhibition of function” models introduced above, we performed a variant of our RNA Bind-n-Seq (RBNS) assay (Lambert et al. 2014), in which recombinant, tagged CELF1 protein was incubated with a pool of random RNA oligonucleotides (of length 40 nt), in the absence of MBNL1, or in the presence of varying concentrations of recombinant MBNL1 protein. This experiment can be thought of as mimicking the effects of developmental induction of MBNL1 on CELF1’s interaction with RNA. Following pulldown of CELF1 using the affinity tag, bound RNA was eluted and used to prepare libraries for high-throughput sequencing (Methods). Calculation of motif enrichment (called RBNS R values) in the CELF1 pulldown libraries relative to a control library prepared from input RNA enables assessment of sequence-specific RNA affinity.

Analyzing all RNA 6mers, we observed a strong preference for GU- and UGU-containing motifs such as UGUUGU in all pulldown libraries, consistent with previous studies (Faustino and Cooper 2005; Marquis et al. 2006; Lambert et al. 2014). Comparing data obtained with relatively high MBNL1 concentration (e.g., 250 nM, a concentration at which MBNL1

exhibits strong sequence-specific binding in this assay) to 0 MBNL concentration, we observed no effect of presence of MBNL1 protein on the absolute or relative affinity of CELF1 for different RNA motifs (Fig. 5F), nor any effect of presence of MBNL1 motifs in the oligonucleotide. These observations were consistent across a range of additional MBNL1 concentrations, from 64 nM to 1 μ M (Fig. S8). This result was not entirely unexpected, as CELFs and MBNLs have distinct sequence specificities, with CELF1 favoring GU- and UGU-containing motifs (Faustino and Cooper 2005; Marquis et al. 2006; Lambert et al. 2014), and MBNL1 favoring motifs containing UGC and/or GCU (Goers et al. 2010; Lambert et al. 2014). These data suggest that binding of these two proteins to RNA exhibits neither synergism nor antagonism, instead occurring independently. Of course the usual caveats regarding the experimental setup and presence of an affinity tag on CELF1 apply, and the in vivo situation might be different. This conclusion provides no support for local inhibition of binding but is consistent with the local inhibition of function model.

Discussion

The relationship between CELF and MBNL proteins is important both in development and in the context of neuromuscular disease, particularly DM. Throughout mouse heart development, CELF protein levels decrease and MBNL levels increase (Kalsotra et al. 2008); in DM, MBNL proteins are sequestered by expanded CUG or CCUG repeats, and CELF proteins are stabilized via hyperphosphorylation by PKC and derepressed as a result of reduced miRNA expression (Timchenko et al. 2004; Kuyumcu-Martinez et al. 2007; Kalsotra et al. 2010). The nature of the relationship between these RBPs in normal physiology and development has been a long-standing question in the field.

It has recently been established that many genes shift toward greater expression of longer 3' UTR isoforms during differentiation of muscle cells and likely other cell types (Ji et al. 2009). We observed a strong pattern of antagonistic regulation of mRNA levels by CELF and MBNLs associated with binding to 3' UTR regions. It is known that CELF1 can recruit deadenylases to 3' UTRs and destabilize mRNAs (Vlasova et al. 2008), and recently we uncovered a global role for MBNLs in localizing mRNAs to membrane destinations for localized translation (Wang et al. 2012). These observations suggest a model in which MBNL and CELF proteins specify different cellular outcomes for mRNAs, and compete with one another to determine the localization/stabilization or destabilization of specific mRNAs that contain binding motifs for both factors (Fig. 6A). Changes in localization often impact mRNA stability (Walters and Parker 2014). Our data, e.g., the pattern shown in Figure 5B, can be most simply explained if messages tend to have a basal decay rate in the cytoplasm, which is generally accelerated by *CELF1* induction and specifically enhanced by direct CELF1 binding, but have a lower decay rate when localized to the membrane compartment. Under this model, the localizations and half-lives of over one thousand messages bound by both factors are determined by the outcome of a competition between the activities of MBNL and CELF proteins.

Downregulation of the *CLCN1* gene, which encodes the major voltage-gated chloride channel that controls the membrane excitability of skeletal muscle, causes the myotonia that is characteristic of DM (Charlet et al. 2002; Mankodi et al. 2002). This downregulation is thought to result primarily from aberrant inclusion of exon 7a, due to loss of *MBNL* activity, which produces a nonfunctional *CLCN1* mRNA (Wheeler et al. 2007). Here, we showed that *Cln1*

mRNA levels decreased monotonically following *CELF1* induction in both muscle and heart, and that CELF1 binds to the *Clcn1* 3' UTR (Fig. 3C). These observations suggest that CELF1 may downregulate the stability of *Clcn1* mRNA, independent of splicing regulation. Therefore, the up-regulation of CELF activity that often accompanies MBNL sequestration in DM skeletal muscle may destabilize the *CLCN1* mRNA and exacerbate myotonia symptoms.

Other messages bound by both factors whose expression responded to *CELF1* induction and whose localization changed in response to *Mbnl1* depletion (Results) included *Kcnj2*, a cardiac inward rectifier potassium channel whose mutation is associated with a syndrome that involves cardiac arrhythmia (Andelfinger et al. 2002), and Sine Oculis binding protein homolog *Sobp*, mutations of which have been linked to intellectual disability (Birk et al., 2010). Other messages with this pattern of binding and localization included *Cpe*, involved in insulin processing, and *Igfbp5*, which regulates insulin-responsive growth factor. Thus, genes that encode competing mRNA targets of CELFs and MBNLs may contribute to symptoms like cardiac arrhythmia, mental retardation and insulin resistance that are observed in DM.

The distance between CELF and MBNL sites on a message appears to play an important role in the outcome of competition between these factors: close spacing of CELF1 sites near MBNL sites (less than ~50 nt apart) appears to override the protective effect normally conferred by MBNL1 binding (Figs. 5D, 6B), either by inhibition of binding or of activity. Our in vitro binding data (Fig. 3h) did not detect evidence of cooperative or antagonistic relationship between binding of CELF1 and MBNL1, suggesting that antagonism occurs at the functional level. For example, CELF binding may inhibit the recruitment or activity of MBNL-dependent complexes involved in mRNA localization or stabilization. Functional antagonism between RBPs that bind to the same mRNAs is well known, e.g., PTB can repress U1 snRNP's ability to promote spliceosome formation without inhibiting its binding to the 5' splice site (Izquierdo et al. 2005; Sharma et al. 2005), and SRRM4 (also known as NSR100) can overcome the repressive effects of PTBP1 without generally interfering with its binding (Raj et al. 2014). The functional antagonism between MBNL and CELF proteins uncovered here is likely to contribute to the robustness of developmental changes in mRNA stability and localization, particularly for mRNAs bound by both factors (Fig. 5E). These mRNAs may be particularly susceptible to misregulation in DM, perhaps contributing to pathogenesis.

We identified several dozen exons exhibiting antagonistic splicing regulation, many of which are developmentally regulated. These exons tend to preserve reading frame and to reside in genes affecting functions involved in development and cell differentiation (Results). Human homologs of this set of antagonistically regulated exons may be mis-regulated in DM to a particularly strong extent, as increased levels of CELF proteins would exacerbate splicing changes that result from MBNL sequestration. The hypothesis that CELF binding to exons tends to repress splicing, suggested by the genome-wide analyses, was confirmed in a splicing reporter system, establishing a rule to predict CELF-dependent splicing regulation.

CELF1 function intersects with RNA processing in a different way in its impact on the stability of alternative mRNA isoforms that differ in their 3' UTRs. We observed a large set of genes with developmentally regulated alternative last exons and tandem UTR isoforms that differentially respond to CELF induction (Fig. 4). Regulation of some of these isoforms by CELF1 may impact encoded protein functions by changing the abundance of protein isoforms differing in their C termini, while regulation of others may alter mRNA localization or translation or other UTR-dependent properties during development and other physiological situations in which CELF activity changes.

Methods

Heart inducible *CELF2* mouse

N-terminal Flag-tagged human *CELF2* was expressed from the transgene previously used for *CELF1* (Koshelev et al. 2010). *TRECUGBP2* transgenic mice were generated by standard techniques and maintained on an FVB background. All reported *TRECUGBP2/MHCrtTA* bitransgenic mice were the F1 progeny from *TRECUGBP2* x *MHCrtTA* (FVB/N-Tg(*Myh6-rtTA*)1Jam) matings. *TRECUGBP2/MHCrtTA* bitransgenic mice induced using doxycycline did not show evidence of ECG, echocardiography abnormalities or abnormal heart size or morphology after 8 weeks of induced expression of *CELF2*.

RNA-seq library preparation and sequencing

CELF1 and *CELF2* were induced in heart and muscle by feeding mice 2 g/kg doxycycline for 12 hours, 24 hours, 72 hours, or 7 days, in the relevant transgenic animal. For *CELF1* induction in heart, mice with myosin heavy chain promoter-driven reverse tetracycline transactivator (*rtTA*) and tet-inducible, N-terminal Flag-tagged human *CELF1* LYLQ isoform were used (Giudice et al. 2014) (data are provided under GEO accession GSE56185). For *CELF2* induction in heart, mice with the myosin heavy chain promoter-driven *rtTA* and tet-inducible human *CELF2* were used. Hearts were harvested, atria removed, and ventricles frozen in liquid nitrogen. For *CELF1* induction in muscle, mice with the rat myosin light chain 1/3 promoter/enhancer driving *rtTA* and tet-inducible, N-terminal Flag-tagged human *CELF1* LYLQ isoform were used. The left and right gastrocnemius were isolated and frozen in liquid nitrogen. Control experiments for all time courses used mice with *rtTA* cassettes, but lacking the tet-inducible *CELF* cassettes; control mice were fed 2 g/kg doxycycline for 72 hours before tissue harvest. Total RNA was isolated in all cases using TRIzol (Invitrogen), followed by RNeasy column with DNase treatment (Qiagen). Poly(A)⁺ RNA was prepared using Oligo dT Dynabeads (Invitrogen) and prepared for paired-end RNA sequencing (36 to 40 nt on Illumina GAII).

CLIP-seq library preparation and sequencing

CLIP was performed using 254 nm UV irradiation as previously described (Wang et al. 2009b), using heart tissue or muscle tissue of 16-week-old mice or cultured C2C12 mouse myoblasts.

Tissue was ground to a powder using liquid nitrogen-cooled mortar and pestle prior to UV irradiation. The dry powder was placed into a 10 cm² tissue culture dish, sitting on ice, and crosslinked 3 x 400 mJ/cm². In between each round of cross-linking, the dish was shaken from side to side, to redistribute the tissue powder and provide maximum opportunity for all tissue particles to be cross-linked. The tissue was then lysed in RIPA buffer (50 mM Tris-HCl pH 7.4, 150 mM NaCl, 0.1% sodium deoxycholate, 1% NP-40, 0.5% SDS). The lysate was treated with DNase and RNase I_f (NEB) for 10 minutes at 37° C, with dilutions of 1:10,000 and 1:50,000 providing optimal RNA fragment lengths for downstream purification. Immunoprecipitation was performed using the 3B1 antibody clone against CELF1 (Millipore) and protein A beads (Invitrogen). The beads were washed twice with RIPA and twice with RIPA containing 1M NaCl. The 3' adapter was pre-adenylated with ImpA (Hafner et al. 2008) and ligated while the RNA-protein complexes were on beads using T4 RNA ligase (Rnl2 truncation) in the absence of ATP (NEB). The complexes were run on SDS-PAGE gel, transferred to nitrocellulose, and isolated from membrane as previously described (Wang et al. 2009b). Further details are provided in Extended Experimental Procedures.

RNA-seq and CLIP-seq read mapping, gene expression estimation

All read mapping was performed using Bowtie/Tophat (Langmead et al. 2009; Trapnell et al. 2009), mapping to mm9. Only uniquely mapping reads were used. CLIP reads were collapsed to remove identical sequences, adapter sequences were removed, and processed reads were then mapped separately for each CLIP read length. To estimate gene expression levels, the number of reads mapping to each kilobase of constitutive coding sequence of RefSeq/Locuslink genes was counted, and divided by the number of reads (in millions) mapping uniquely to non-ribosomal and non-mitochondrial sequence, to obtain RPKM values. For purposes of the analyses performed in Fig. 4E, gene expression values in the heart development time course were normalized as described (Robinson and Oshlack 2010), using parameters $M = 0.3$ and $A = 0.2$.

Estimation of isoform frequencies, calculation of MZ score

MISO (version 0.4.8) (Katz et al. 2010) was used to estimate isoform frequencies for splicing events and alternative 3' UTR events, using a minimum of 20 reads per event and parameters of `burn_in=500`, `lag=10`, `num_iters=5000`, and `num_chains=6`. To identify splicing events that

change monotonically over time, we ordered samples chronologically, and for each event compared all pairs of samples from different time points, tallying the number of comparisons representing significant increase or significant decrease in Ψ (at $\text{BF} > 5$). We calculated a quantity called δ , the number of significant positive $\square\square$ values (increases over time) minus the number of significant negative $\square\square$ values. To assess statistical significance, we recalculated \square after randomly permuting the sample labels. Repeating this process 100 times, we generated a null distribution, and derived the “monotonicity Z-score” ($\text{MZ} = (\delta - \tilde{\mu})/\sigma$), where μ and σ are the mean and standard deviation of the null distribution, respectively.

Analysis of antagonistically regulated splicing events (Figs. 1G, 1H)

Splicing events regulated in response to each perturbation (*CELF* over-expression, *Mbnl1* KO, or heart development) were enumerated, and the number of events regulated among each pair of perturbations was counted (this was the “observed” overlap). To compute the “expected” overlap, we assumed independence, e.g. the fraction of events regulated in both perturbations equals the fraction of events regulated in the first perturbation multiplied by the fraction of events regulated in the second perturbation. Significance of the bias in direction of regulation (Fig. 1H) was assessed by binomial test, assuming a null hypothesis frequency of 0.5.

Analysis of CLIP clusters and correlation across the transcriptome (Figs. 2B, 2C, 2E, S3B,C)

Analysis of CLIP data was performed as described in Extended Experimental Procedures.

Conservation analysis for cassette exons and 3' UTRs (Figs. 2D, 3B)

Conservation (30-way phastCons, UCSC Genome Browser) of cassette exons with CLIP clusters within 1 kilobase of each splice site or within the exon itself was compared to a control set of cassette exons found in similarly expressed genes. Conservation (30-way phastCons) of 3' UTRs with CLIP clusters less than 1 kilobase upstream and less than 500 bases downstream of constitutive transcript ends was assessed and compared to a control set of 3' UTRs with similar length, in similarly expressed genes. For these analyses, CLIP clusters and gene expression values from heart were used.

Analysis of gene expression changes as a function of CELF CLIP clusters and/or microRNA seed matches (Figs. 3D, S5A)

Genes were grouped by the number of CELF CLIP clusters found in 3' UTRs (Fig. 3E) or microRNA seed matches (Fig. 3F), and the mean \log_2 (fold-change) in expression level in each group was computed, relative to genes with no CLIP clusters or microRNA seeds, respectively. Significance was assessed by rank-sum test. The abundance of microRNAs in heart (Fig. 3G) was derived from (Li et al. 2013).

Analysis of binding targets shared by CELF1 and MBNL1 (Fig. 5A)

Genes were binned by expression level in mouse myoblast (Wang et al. 2012), and within each bin, the number of genes with 3' UTRs containing CELF1 CLIP clusters only, MBNL1 CLIP clusters only, or clusters for both proteins was counted (“observed” number). The “expected” number was computed by assuming independence. The ~3-fold observed/expected value was obtained by taking the mean observed/expected value across all gene expression bins. In Figure 5A, CLIP data for CELF1 was derived from muscle, and for MBNL1 from myoblasts.

Analysis of CELF1 and MBNL1 binding locations within 3' UTRs (Figs. 5C-E, S7A,B)

To precisely assess the distance between CELF1 and MBNL1 binding locations within 3' UTRs, we searched for known CELF1 and MBNL1 binding motifs within each CLIP cluster for each protein. The motifs were derived from Bind-n-Seq data (Lambert et al. 2014). For MBNL1, the motifs were: GCTT, CGCT, TGCT, GCGC, CCGC, CTGC, GCTA, ACGC, CGCA, AGCT, TTGC, and CAGC. For CELF1, the motifs were: TGTT, ATGT, TTGT, TGTC, GTGT, TGTA, GTTT, TGTG, GTCT, and TTTT. If none of these motifs was found within the cluster, the binding location was estimated to be the center of the CLIP cluster. The closest distance between each CELF1 and MBNL1 motif derived from its respective cluster was recorded, and compared to randomly assigned clusters (Fig. 5C) or clusters whose identity was shuffled (Fig. S7A). Tests for significant differences in Figures 5C and S7A were performed by modified KS test, where cumulative distributions were visually inspected to confirm a true shift in median values.

Analysis of alternative 3' UTR isoforms (Figs. 4B-E, S6)

Abundance of alternative 3' UTR isoforms by MISO was performed in “multi-isoform” mode. However, analysis was restricted to those events with exactly 2 isoforms whose regulation is significant and monotonic ($BF > 5$, $MZ > 1.6$ for tandem UTRs, $MZ > 1.5$ for ALEs). To assess changes in gene expression, genes were binned by the number of CELF1 CLIP clusters in the “core” or “extension” regions (Fig. 4B) or in both ALEs (Fig. 4E), and the mean expression change following *CELF1* induction in each bin was compared to the mean expression change in the bin with zero CELF1 CLIP clusters. Significance was assessed by rank-sum test. To estimate “potency” of each CLIP cluster, we used a linear model; for tandem UTRs, we considered a linear model in which $\log(\text{expression change})$ is proportional to $\text{no. core sites} \times \text{potency of core site} + \text{no. extension sites} \times \text{potency of extension} \times \Psi_{\text{extension}}$. For ALEs, we considered a model in which $\log(\text{expression change})$ is proportional to $\text{no. sites in ALE1} \times \text{potency} \times \Psi_{\text{ALE1}} + \text{no. sites in ALE2} \times \text{potency} \times \Psi_{\text{ALE2}}$. In both cases, coefficients were estimated by least squares regression.

Data Access

The RNA-seq, CLIP-Seq and RBNS sequencing data from this study have been submitted to the NCBI Gene Expression Omnibus (GEO; <http://www.ncbi.nlm.nih.gov/geo/>) under superseries accession number GSE61893.

Acknowledgements

We thank M. Swanson and members of the Burge lab for helpful comments.

Disclosure Declaration

This work was supported by a grant from the Myotonic Dystrophy Foundation and NIH grant OD017865-02 (E.T.W.), by NIH grants R01HL045565, R01AR060733, and R01AR045653 (T.A.C.), by NSF award 0821391 (A. Keating and C.B.B.), and by NIH grants R01GM085319

and RC2HG005624 (C.B.B.). The funders had no role in study design, data collection and analysis, decision to publish, or preparation of the manuscript.

The authors have declared that no competing interests exist.

Figure Legends

Figure 1. *CELF1* and *CELF2* regulate hundreds of splicing events, reversing many changes during heart development, and antagonizing a subset of *Mbnl*-regulated exons.

A) RNA-seq read coverage across *Tmed2* exon 3 from mouse heart at several time points following *CELF1* induction. MISO Ψ values and 95% confidence intervals shown at right.

B) Splicing changes that occur following *CELF1* over-expression in heart correlate with splicing changes that occur following *CELF1* over-expression in muscle. $n = 2496$ alternative splicing events (skipped exons, alternative 3' splice sites, alternative 5' splice sites, retained introns, and mutually exclusive exons) shown: monotonically changing exons shown as black circles, others as gray dots. Correlation values of monotonic events (shown) are higher than for all events: the numbers of monotonic events in each quadrant are shown in corners.

C) Splicing changes that occur in response to *CELF1* over-expression in heart correlate with splicing changes that occur in response to *CELF2* over-expression in heart. As in C) with $n = 2129$ skipped exons shown.

D) Splicing changes that occur in response *CELF1* over-expression in heart inversely correlate with splicing changes that occur during mouse heart development. As in C) with $n = 1952$ skipped exons shown.

E) Splicing changes that occur in *Mbnl1* KO heart inversely correlate with splicing changes that occur during mouse heart development. $n = 3190$ skipped exons shown, as in Fig. 1C.

F) Splicing changes that occur in *Mbnl1* KO muscle correlate with splicing changes that occur following *CELF1* over-expression in muscle. $n = 1501$ skipped exons shown. Events that changed monotonically, or with $BF > 5$, following *CELF1* over-expression in muscle or *Mbnl1*

KO in muscle, respectively, are shown in black, and correlations are listed for these events.

Events that also changed monotonically during heart development are shown in red.

G) Exons regulated during heart development also tend to change in *Mbnl1* and *Mbnl2* knockdown myoblasts, and in *Mbnl1* and *Mbnl2* knockout mice, and *CELF1* or *CELF2* over-expressing mice. Enrichment (observed / expected number of regulated exons) is shown in the heat map.

H) Splicing of exons regulated in response to *CELF* over-expression or *Mbnl* depletion tends to change in a direction opposite to changes that occur during heart development. The fraction of events changing in the same direction for each pair of comparisons is shown in the heat map (only biases significant at $P < 0.01$ by binomial test are colored).

Also see Figures S1-2 and Tables S1-4.

Figure 2. CELF1 binds to consistent locations across cell and tissues, and represses splicing of bound exons.

A) CELF1 CLIP-seq read coverage across the 3' UTR of the mouse *Myadm* gene. Binding locations are highly correlated between muscle and heart.

B) Correlation of CLIP tag densities in 5 nt windows across all 3' UTRs expressed in mouse heart, muscle, and myoblasts.

C) Histogram of enrichment Z-scores of 5mers based on frequency of occurrence in *CELF1* heart CLIP clusters relative to control regions from the 3' UTRs.

D) Meta-exon analysis of conservation (mean + 95% confidence interval of phastCons score in 5 nt windows shown) at a range of distances from 3' and 5' splice sites of exons with (red) and without (black) overlapping CELF1 CLIP clusters in heart. $n = 432$ skipped exons shown.

E) Information content (relative entropy compared to uniform) of genomic positions in regions where CELF1 CLIP-seq reads map, grouped by the frequency of substitution in CLIP reads relative to genome of the central G position.

F) Fraction of significantly repressed exons (Ψ at 7 days $<$ Ψ in control animals) with or without CLIP clusters, at three thresholds of monotonicity Z-score from *CELF1* over-expression time courses in heart and muscle. Significance was assessed by binomial test, where the number of events with CLIP clusters that were repressed was compared to the fraction of events without CLIP clusters that were repressed.

G) Design of experiment involving splicing reporters and Pumilio-based synthetic splicing factors, and assessment of splicing by qRT-PCR.

H) Tethering the divergent domain of CELF1 to a cassette exon in a splicing reporter by Pumilio fusion promotes exon skipping. In a positive control, tethering of RS domains to the cassette exon enhances exon inclusion. Enhancement by RS and repression by CELF1 occur only when the Pumilio domain has affinity for the inserted oligonucleotide.

Also see Figures S3-4 and Table S5.

Figure 3. CELF1 binds to 3' UTRs and regulates message stability in a dose-dependent fashion.

A) Mean CELF1 CLIP density at positions along 3' UTRs in heart, muscle, and myoblasts.

B) Mean conservation in sets of 3' UTRs with and without CELF1 CLIP clusters with similar expression levels and UTR lengths (shading represents SEM).

C) Expression of *Cln1* in muscle based on RNA-seq (mean \pm standard deviation), at various times following *CELF1* overexpression (below); CLIP density in *Cln1* 3' UTR (above).

D) Mean log expression change following *CELF1* induction (7 d over control) for transcripts grouped by number of *CELF1* CLIP clusters in their 3' UTRs. Transcripts with greater CLIP cluster density are downregulated more strongly in heart and muscle (number of genes in each category listed above). Significance was assessed by rank-sum test, where each CLIP cluster bin was compared to the zero CLIP cluster bin.

Also see Table S6.

Figure 4. *CELF1* regulates abundance of bound alternative 3' UTRs, reversing developmental changes.

A) *CELF1* CLIP-seq density in 3' UTR of *Cnih4* gene, which has two alternative PAS whose relative abundance changes following *CELF1* over-expression and during heart development.

B) *CELF1* regulates tandem 3' UTR events in a manner that is dependent on the number of binding sites in the core and/or extension region of the 3' UTR. The heat map shows the fraction of tandem UTR events biased towards usage of the proximal PAS following *CELF1* over-expression in muscle, for events grouped by the number of CLIP clusters in the proximal or distal region of the 3' UTR ($MZ > 1.6$). Significance was assessed by binomial test, assuming equal likelihood for usage of long or short isoforms.

C) Messages with regulated tandem 3' UTR events tend to be downregulated following *CELF1* induction. The heatmap shows the mean expression change following *CELF1* induction in muscle, for genes harboring events grouped by the number of CLIP clusters in the proximal or distal region of the 3' UTR. Significance was assessed by rank-sum test, where each bin was compared to the bin with zero CLIP clusters.

D) *CELF1* regulates ALE expression in a manner that is dependent on the number of binding sites in the competing 3' UTRs. The fraction of ALEs that are significantly repressed following *CELF1* over-expression in muscle, grouped by density in repressed 3' UTR minus density in enhanced 3' UTR ($MZ > 1.5$). Significance was assessed by binomial test, assuming equal likelihood for usage of each ALE isoform.

E) Messages with *CELF1* binding within ALEs tend to be downregulated following *CELF1* induction. The bar plot shows the mean expression change following *CELF1* induction in muscle, for genes with varying numbers of CLIP clusters within ALEs. Significance was assessed by rank-sum test relative to genes with no CLIP clusters.

F) Changes in ALE usage during heart development inversely correlate with those that occur in response to *CELF1* over-expression in heart. Correlation coefficients shown for events meeting a minimum Z-score threshold (heart development: 1.4, *CELF1* OE: 1.8). As in Fig. 1C.

G) Spearman correlation coefficients and significance of correlation are displayed in heat map format for change in ALE usage (top) or change in tandem 3' UTR usage (bottom) for pairwise comparisons of isoform changes during heart development, *CELF1* over-expression in heart, and *CELF1* over-expression in muscle.

Also see Figure S6.

Figure 5. *CELF1* and *MBNL1* bind in close proximity to the same 3' UTRs, and exert opposing effects on mRNA stability.

A) A Venn diagram showing the expected and observed overlap between *CELF1* and *MBNL1* 3' UTR targets (*CELF1* data from muscle, *MBNL1* data from myoblasts). The observed overlap is

~3 times larger than expected (analysis controlled for gene expression), and significant by Fisher's exact test.

B) Expression change following *CELF1* induction in muscle (7 d versus control) for transcripts grouped by number of MBNL1 and CELF1 CLIP clusters in the 3' UTR. CLIP clusters for MBNL1 and CELF1 were derived from myoblast and from muscle, respectively.

C) The probability density function (PDF) of the distribution of distances between CELF1 CLIP clusters in muscle and MBNL1 CLIP clusters in myoblasts, in 3' UTRs with binding for both proteins. Distances for true binding sites are shown in blue, and for randomly placed binding sites in black. Statistical significance was assessed by modified KS test, and the distribution of distances in shuffled controls is shown in gray.

D) Expression change following CELF1 induction in muscle (7 d versus control) for transcripts with exactly 1 MBNL1 CLIP cluster and exactly 1 CELF1 CLIP cluster. Genes were grouped according to whether the distance between motifs is less than or greater than 50 base pairs. Significance was assessed by rank-sum test.

E) Expression change during heart development (adult versus E17) for transcripts with varying numbers of MBNL1 and CELF1 CLIP clusters. Genes were grouped according to the relative abundance of MBNL1 and CELF1 CLIP clusters, and by presence/absence of a proximal MBNL1/CELF1 binding pair. Only transcripts with gene expression MZ scores >0.5 were included in this analysis, and significance was assessed by KS test.

Also see Figures S7-8 and Tables S7-8.

Figure 6. Functional antagonism model of effects of CELF and MBNL proteins on mRNA fates.

A) Summary of known non-splicing activities: CELF1 binding to 3' UTRs promotes mRNA deadenylation and decay (Vlasova and Bohjanen 2008), while MBNL1 binding to 3' UTRs promotes localization to membrane compartments (Wang et al. 2012).

B) Binding of both proteins to the same mRNA is expected to result in a functional tug-of-war. For mRNAs containing distal MBNL and CELF binding sites, MBNL promotes targeting of the mRNA for localization and stabilization, while CELF binding promotes decay.

For mRNAs containing proximal MBNL and CELF binding sites, CELF1 may directly antagonize MBNL1 function, e.g., by preventing recruitment of complexes associated with localization or inhibiting their function.

Supplementary Table and Figure Summary

Table S1. Mice used for RNA-seq. Related to Figure 1. (Excel file)

Table S2. All splicing events detected in *CELF1* and *CELF2* OE time courses. Related to Figure 1. (Excel file)

Table S3. Splicing events regulated by both *CELF* and *Mbnl*, along with information about regulation during heart development. Related to Figure 1. (Excel file)

Table S4. Gene Ontology analysis of genes containing exons responsive to both *CELF1* OE and *Mbnl1* depletion. Related to Figure 1. (Excel file)

Table S5. Gene Ontology categories for genes with 3' UTR *CELF1* binding in heart, muscle, or C2C12. Related to Figure 2. (Excel file)

Table S6. Gene expression changes in response to *CELF* induction. Related to Figure 3. (Excel file)

Table S7. *CELF1* and *MBNL1* CLIP cluster locations within 3' UTRs. Related to Figure 5 (Excel file)

Table S8. Gene Ontology categories for genes with 3' UTR *CELF1* binding in muscle and 3' UTR *MBNL1* binding in C2C12 myoblasts. Related to Figure 5. (Excel file)

Figure S1. Gene expression levels as estimated by RNA-seq, for genes induced during *CELF1* or *CELF2* time courses. Related to Figure 1.

Figure S2. Method for determining monotonicity of splicing regulation. Related to Experimental Procedures and Figure 1.

Figure S3. *CELF1* CLIP-seq in heart, muscle, and myoblasts. Related to Figure 2.

Figure S4. *CELF1* binding is moderately associated with splicing regulation. Related to Figure 2.

Figure S5. *CELF1* induction in heart leads to de-repression of miRNA targets. Related to Figure 3.

Figure S6. Alternative last exon abundance as a function of the difference in number of *CELF1* CLIP clusters between each 3' UTR. Related to Figure 4.

Figure S7. *CELF1* and *MBNL1* binding sites are closer than expected. Related to Figure 5.

Figure S8. MBNL1 presence does not affect in vitro binding of CELF1 to RNA. Related to Figure 5.

References

- Adereth Y, Dammai V, Kose N, Li R, Hsu T. 2005. RNA-dependent integrin alpha3 protein localization regulated by the Muscleblind-like protein MLP1. *Nat Cell Biol* **7**(12): 1240-1247.
- Barreau C, Paillard L, Mereau A, Osborne HB. 2006. Mammalian CELF/Bruno-like RNA-binding proteins: molecular characteristics and biological functions. *Biochimie* **88**(5): 515-525.
- Charlet BN, Logan P, Singh G, Cooper TA. 2002. Dynamic antagonism between ETR-3 and PTB regulates cell type-specific alternative splicing. *Molecular cell* **9**(3): 649-658.
- Dasgupta T, Ladd AN. 2012. The importance of CELF control: molecular and biological roles of the CUG-BP, Elav-like family of RNA-binding proteins. *Wiley interdisciplinary reviews RNA* **3**(1): 104-121.
- Dembowski JA, Grabowski PJ. 2009. The CUGBP2 splicing factor regulates an ensemble of branchpoints from perimeter binding sites with implications for autoregulation. *PLoS Genet* **5**(8): e1000595.
- Dhaenens CM, Schraen-Maschke S, Tran H, Vingtdoux V, Ghanem D, Leroy O, Delplanque J, Vanbrussel E, Delacourte A, Vermersch P et al. 2008. Overexpression of MBNL1 fetal isoforms and modified splicing of Tau in the DM1 brain: two individual consequences of CUG trinucleotide repeats. *Experimental neurology* **210**(2): 467-478.
- Du H, Cline MS, Osborne RJ, Tuttle DL, Clark TA, Donohue JP, Hall MP, Shiue L, Swanson MS, Thornton CA et al. 2010. Aberrant alternative splicing and extracellular matrix gene expression in mouse models of myotonic dystrophy. *Nat Struct Mol Biol* **17**(2): 187-193.
- Faustino NA, Cooper TA. 2005. Identification of putative new splicing targets for ETR-3 using sequences identified by systematic evolution of ligands by exponential enrichment. *Molecular and cellular biology* **25**(3): 879-887.
- Giudice J, Xia Z, Wang ET, Scavuzzo MA, Ward AJ, Kalsotra A, Wang W, Wehrens XH, Burge CB, Li W et al. 2014. Alternative splicing regulates vesicular trafficking genes in cardiomyocytes during postnatal heart development. *Nature communications* **5**: 3603.
- Goers ES, Purcell J, Voelker RB, Gates DP, Berglund JA. 2010. MBNL1 binds GC motifs embedded in pyrimidines to regulate alternative splicing. *Nucleic Acids Res* **38**(7): 2467-2484.
- Goo YH, Cooper TA. 2009. CUGBP2 directly interacts with U2 17S snRNP components and promotes U2 snRNA binding to cardiac troponin T pre-mRNA. *Nucleic Acids Res* **37**(13): 4275-4286.
- Hafner M, Landgraf P, Ludwig J, Rice A, Ojo T, Lin C, Holoch D, Lim C, Tuschl T. 2008. Identification of microRNAs and other small regulatory RNAs using cDNA library sequencing. *Methods* **44**(1): 3-12.
- Han J, Cooper TA. 2005. Identification of CELF splicing activation and repression domains in vivo. *Nucleic acids research* **33**(9): 2769-2780.

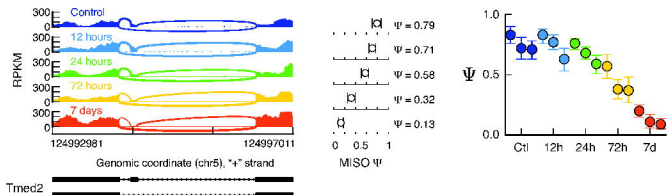
- Ho TH, Charlet BN, Poulos MG, Singh G, Swanson MS, Cooper TA. 2004. Muscleblind proteins regulate alternative splicing. *EMBO J* **23**(15): 3103-3112.
- Ho TH, Savkur RS, Poulos MG, Mancini MA, Swanson MS, Cooper TA. 2005. Colocalization of muscleblind with RNA foci is separable from mis-regulation of alternative splicing in myotonic dystrophy. *Journal of cell science* **118**(Pt 13): 2923-2933.
- Izquierdo JM, Majos N, Bonnal S, Martinez C, Castelo R, Guigo R, Bilbao D, Valcarcel J. 2005. Regulation of Fas alternative splicing by antagonistic effects of TIA-1 and PTB on exon definition. *Mol Cell* **19**(4): 475-484.
- Ji Z, Lee JY, Pan Z, Jiang B, Tian B. 2009. Progressive lengthening of 3' untranslated regions of mRNAs by alternative polyadenylation during mouse embryonic development. *Proc Natl Acad Sci U S A* **106**(17): 7028-7033.
- Kalsotra A, Singh RK, Gurha P, Ward AJ, Creighton CJ, Cooper TA. 2014. The Mef2 transcription network is disrupted in myotonic dystrophy heart tissue, dramatically altering miRNA and mRNA expression. *Cell reports* **6**(2): 336-345.
- Kalsotra A, Wang K, Li PF, Cooper TA. 2010. MicroRNAs coordinate an alternative splicing network during mouse postnatal heart development. *Genes & development* **24**(7): 653-658.
- Kalsotra A, Xiao X, Ward AJ, Castle JC, Johnson JM, Burge CB, Cooper TA. 2008. A postnatal switch of CELF and MBNL proteins reprograms alternative splicing in the developing heart. *Proceedings of the National Academy of Sciences of the United States of America* **105**(51): 20333-20338.
- Katz Y, Wang ET, Airoidi EM, Burge CB. 2010. Analysis and design of RNA sequencing experiments for identifying isoform regulation. *Nat Methods* **7**(12): 1009-1015.
- Kishore S, Jaskiewicz L, Burger L, Hausser J, Khorshid M, Zavolan M. 2011. A quantitative analysis of CLIP methods for identifying binding sites of RNA-binding proteins. *Nat Methods* **8**(7): 559-564.
- Koshelev M, Sarma S, Price RE, Wehrens XHT, Cooper TA. 2010. Heart-specific overexpression of CUGBP1 reproduces functional and molecular abnormalities of myotonic dystrophy type 1. *Hum Mol Genet* **19**(6): 1066-1075.
- Kuyumcu-Martinez NM, Wang G-S, Cooper TA. 2007. Increased steady-state levels of CUGBP1 in myotonic dystrophy 1 are due to PKC-mediated hyperphosphorylation. *Mol Cell* **28**(1): 68-78.
- Ladd AN. 2013. CUG-BP, Elav-like family (CELF)-mediated alternative splicing regulation in the brain during health and disease. *Molecular and cellular neurosciences* **56**: 456-464.
- Ladd AN, Stenberg MG, Swanson MS, Cooper TA. 2005. Dynamic balance between activation and repression regulates pre-mRNA alternative splicing during heart development. *Developmental dynamics : an official publication of the American Association of Anatomists* **233**(3): 783-793.
- Lambert N, Robertson A, Jangi M, McGeary S, Sharp PA, Burge CB. 2014. RNA Bind-n-Seq: Quantitative Assessment of the Sequence and Structural Binding Specificity of RNA Binding Proteins. *Mol Cell*.
- Langmead B, Trapnell C, Pop M, Salzberg SL. 2009. Ultrafast and memory-efficient alignment of short DNA sequences to the human genome. *Genome Biol* **10**(3): R25.

- Lee JE, Lee JY, Wilusz J, Tian B, Wilusz CJ. 2010. Systematic analysis of cis-elements in unstable mRNAs demonstrates that CUGBP1 is a key regulator of mRNA decay in muscle cells. *PLoS One* **5**(6): e11201.
- Li N, You X, Chen T, Mackowiak SD, Friedlander MR, Weigt M, Du H, Gogol-Doring A, Chang Z, Dieterich C et al. 2013. Global profiling of miRNAs and the hairpin precursors: insights into miRNA processing and novel miRNA discovery. *Nucleic Acids Res* **41**(6): 3619-3634.
- Lin X, Miller JW, Mankodi A, Kanadia RN, Yuan Y, Moxley RT, Swanson MS, Thornton CA. 2006. Failure of MBNL1-dependent post-natal splicing transitions in myotonic dystrophy. *Hum Mol Genet* **15**(13): 2087-2097.
- Lowes BD, Minobe W, Abraham WT, Rizeq MN, Bohlmeier TJ, Quaipe RA, Roden RL, Dutcher DL, Robertson AD, Voelkel NF et al. 1997. Changes in gene expression in the intact human heart. Downregulation of alpha-myosin heavy chain in hypertrophied, failing ventricular myocardium. *J Clin Invest* **100**(9): 2315-2324.
- Mankodi A, Takahashi MP, Jiang H, Beck CL, Bowers WJ, Moxley RT, Cannon SC, Thornton CA. 2002. Expanded CUG repeats trigger aberrant splicing of ClC-1 chloride channel pre-mRNA and hyperexcitability of skeletal muscle in myotonic dystrophy. *Mol Cell* **10**(1): 35-44.
- Marquis J, Paillard L, Audic Y, Cosson B, Danos O, Le Bec C, Osborne HB. 2006. CUG-BP1/CELF1 requires UGU-rich sequences for high-affinity binding. *The Biochemical journal* **400**(2): 291-301.
- Masuda A, Andersen HS, Doktor TK, Okamoto T, Ito M, Andresen BS, Ohno K. 2012a. CUGBP1 and MBNL1 preferentially bind to 3' UTRs and facilitate mRNA decay. *Sci Rep* **2**: 209.
- Masuda A, Andersen HS, Doktor TK, Okamoto T, Ito M, Andresen BS, Ohno K. 2012b. CUGBP1 and MBNL1 preferentially bind to 3' UTRs and facilitate mRNA decay. *Sci Rep* **2**.
- Matlin AJ, Clark F, Smith CWJ. 2005. Understanding alternative splicing: towards a cellular code. *Nat Rev Mol Cell Biol* **6**(5): 386-398.
- Moraes JC, Amaral ME, Picardi PK, Calegari VC, Romanatto T, Bermudez-Echeverry M, Chiavegatto S, Saad MJ, Velloso LA. 2006. Inducible-NOS but not neuronal-NOS participate in the acute effect of TNF-alpha on hypothalamic insulin-dependent inhibition of food intake. *FEBS letters* **580**(19): 4625-4631.
- Paillard L, Legagneux V, Beverley Osborne H. 2003. A functional deadenylation assay identifies human CUG-BP as a deadenylation factor. *Biology of the cell / under the auspices of the European Cell Biology Organization* **95**(2): 107-113.
- Philips AV, Timchenko LT, Cooper TA. 1998. Disruption of splicing regulated by a CUG-binding protein in myotonic dystrophy. *Science* **280**(5364): 737-741.
- Raj B, Irimia M, Braunschweig U, Sterne-Weiler T, O'Hanlon D, Lin ZY, Chen GI, Easton LE, Ule J, Gingras AC et al. 2014. A global regulatory mechanism for activating an exon network required for neurogenesis. *Mol Cell* **56**(1): 90-103.
- Rattenbacher B, Beisang D, Wiesner DL, Jeschke JC, von Hohenberg M, St Louis-Vlasova IA, Bohjanen PR. 2010. Analysis of CUGBP1 targets identifies GU-repeat sequences that mediate rapid mRNA decay. *Mol Cell Biol* **30**(16): 3970-3980.

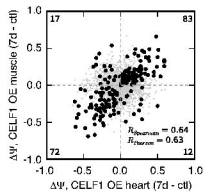
- Robinson MD, Oshlack A. 2010. A scaling normalization method for differential expression analysis of RNA-seq data. *Genome Biol* **11**(3): R25.
- Sharma S, Falick AM, Black DL. 2005. Polypyrimidine tract binding protein blocks the 5' splice site-dependent assembly of U2AF and the prespliceosomal E complex. *Mol Cell* **19**(4): 485-496.
- Timchenko LT, Timchenko NA, Caskey CT, Roberts R. 1996. Novel proteins with binding specificity for DNA CTG repeats and RNA CUG repeats: implications for myotonic dystrophy. *Hum Mol Genet* **5**(1): 115-121.
- Timchenko NA, Patel R, Iakova P, Cai ZJ, Quan L, Timchenko LT. 2004. Overexpression of CUG triplet repeat-binding protein, CUGBP1, in mice inhibits myogenesis. *The Journal of biological chemistry* **279**(13): 13129-13139.
- Trapnell C, Pachter L, Salzberg SL. 2009. TopHat: discovering splice junctions with RNA-Seq. *Bioinformatics* **25**(9): 1105-1111.
- Vlasova IA, Bohjanen PR. 2008. Posttranscriptional regulation of gene networks by GU-rich elements and CELF proteins. *RNA biology* **5**(4): 201-207.
- Vlasova IA, Tahoe NM, Fan D, Larsson O, Rattenbacher B, Sternjohn JR, Vasdewani J, Karypis G, Reilly CS, Bitterman PB et al. 2008. Conserved GU-rich elements mediate mRNA decay by binding to CUG-binding protein 1. *Mol Cell* **29**(2): 263-270.
- Vlasova-St Louis I, Dickson AM, Bohjanen PR, Wilusz CJ. 2013. CELFish ways to modulate mRNA decay. *Biochimica et biophysica acta* **1829**(6-7): 695-707.
- Walters R, Parker R. 2014. Quality control: Is there quality control of localized mRNAs? *J Cell Biol* **204**(6): 863-868.
- Wang ET, Cody NA, Jog S, Biancolella M, Wang TT, Treacy DJ, Luo S, Schroth GP, Housman DE, Reddy S et al. 2012. Transcriptome-wide regulation of pre-mRNA splicing and mRNA localization by muscleblind proteins. *Cell* **150**(4): 710-724.
- Wang Y, Cheong CG, Hall TM, Wang Z. 2009a. Engineering splicing factors with designed specificities. *Nature methods* **6**(11): 825-830.
- Wang Z, Tollervey J, Briese M, Turner D, Ule J. 2009b. CLIP: construction of cDNA libraries for high-throughput sequencing from RNAs cross-linked to proteins in vivo. *Methods* **48**(3): 287-293.
- Ward AJ, Rimer M, Killian JM, Dowling JJ, Cooper TA. 2010. CUGBP1 overexpression in mouse skeletal muscle reproduces features of myotonic dystrophy type 1. *Hum Mol Genet* **19**(18): 3614-3622.
- Wheeler TM, Lueck JD, Swanson MS, Dirksen RT, Thornton CA. 2007. Correction of ClC-1 splicing eliminates chloride channelopathy and myotonia in mouse models of myotonic dystrophy. *J Clin Invest* **117**(12): 3952-3957.
- Xiao X, Wang Z, Jang M, Nutiu R, Wang ET, Burge CB. 2009. Splice site strength-dependent activity and genetic buffering by poly-G runs. *Nat Struct Mol Biol* **16**(10): 1094-1100.

Figure 1

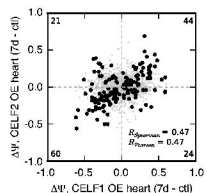
A



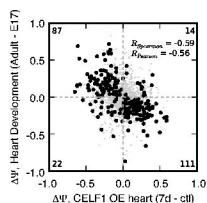
B



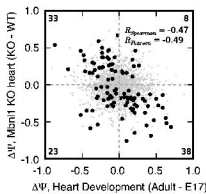
C



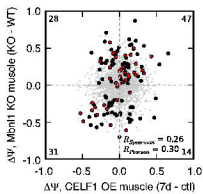
D



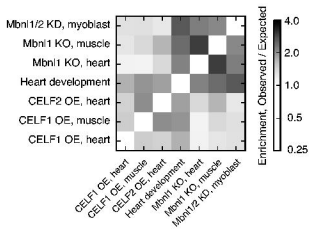
E



F



G



H

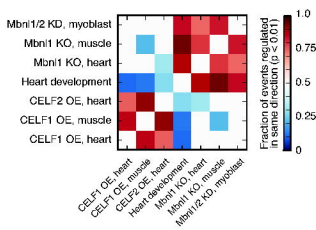


Figure 2

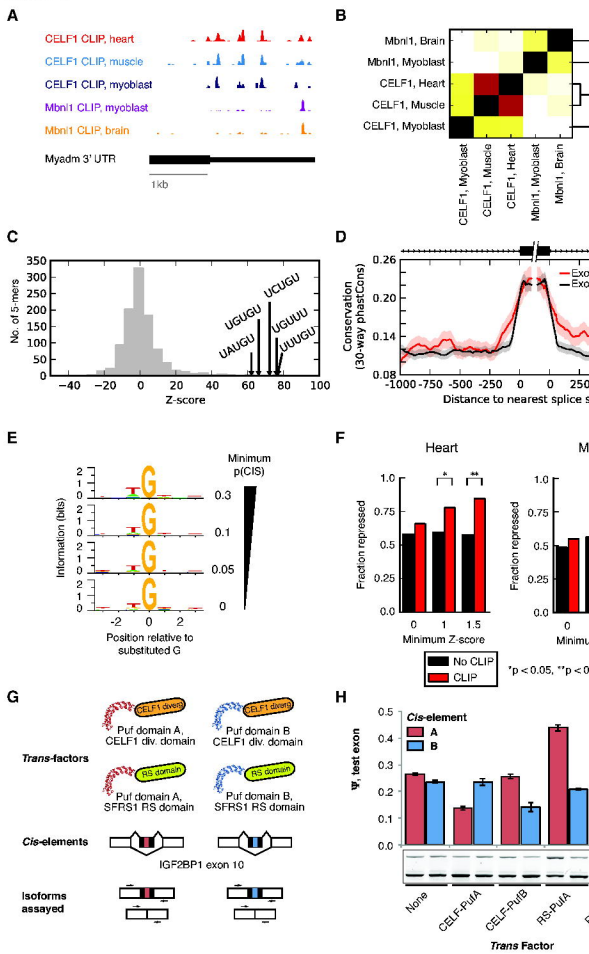


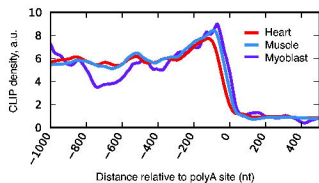
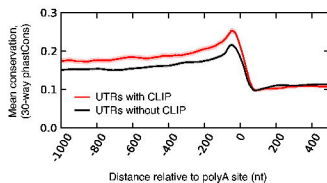
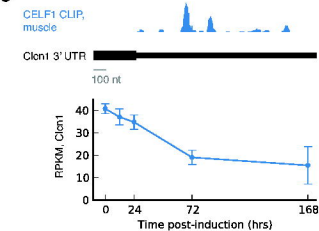
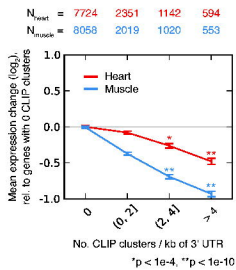
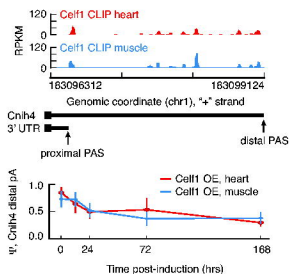
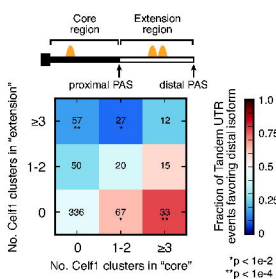
Figure 3**A****B****C****D**

Figure 4

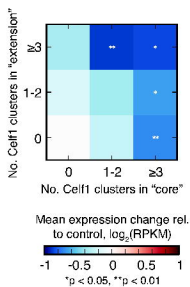
A



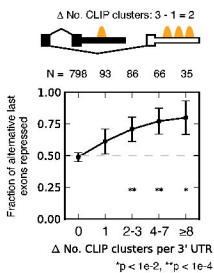
B



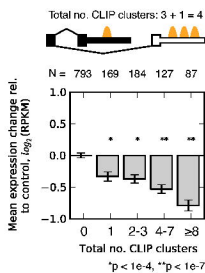
C



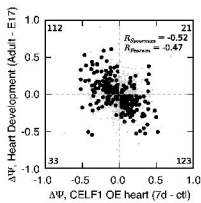
D



E



F



G

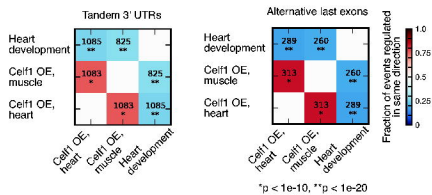
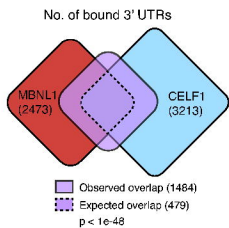
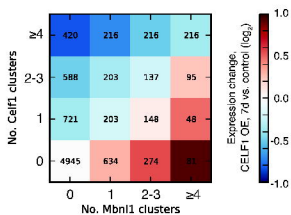


Figure 5

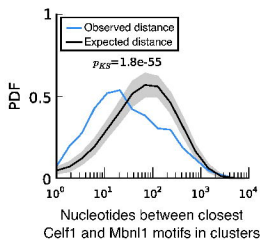
A



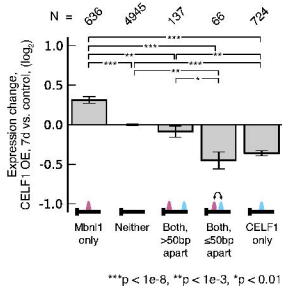
B



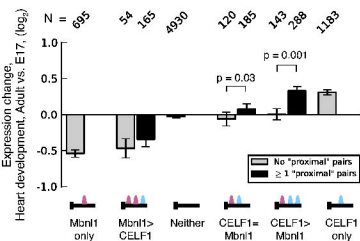
C



D



E



F

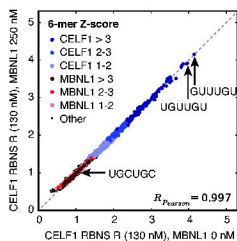


Figure 6

