



## Evolution of splicing regulatory networks in *Drosophila*

C. Joel McManus, Joseph D Coolon, Jodi Eipper-Mains, et al.

*Genome Res.* published online February 10, 2014  
Access the most recent version at doi:[10.1101/gr.161521.113](https://doi.org/10.1101/gr.161521.113)

---

<b>P&lt;P</b>	Published online February 10, 2014 in advance of the print journal.
<b>Accepted Manuscript</b>	Peer-reviewed and accepted for publication but not copyedited or typeset; accepted manuscript is likely to differ from the final, published version.
<b>Creative Commons License</b>	This article is distributed exclusively by Cold Spring Harbor Laboratory Press for the first six months after the full-issue publication date (see <a href="http://genome.cshlp.org/site/misc/terms.xhtml">http://genome.cshlp.org/site/misc/terms.xhtml</a> ). After six months, it is available under a Creative Commons License (Attribution-NonCommercial 3.0 Unported), as described at <a href="http://creativecommons.org/licenses/by-nc/3.0/">http://creativecommons.org/licenses/by-nc/3.0/</a> .
<b>Email Alerting Service</b>	Receive free email alerts when new articles cite this article - sign up in the box at the top right corner of the article or <a href="#">click here</a> .

---

---

Advance online articles have been peer reviewed and accepted for publication but have not yet appeared in the paper journal (edited, typeset versions may be posted when available prior to final publication). Advance online articles are citable and establish publication priority; they are indexed by PubMed from initial publication. Citations to Advance online articles must include the digital object identifier (DOIs) and date of initial publication.

---

To subscribe to *Genome Research* go to:  
<https://genome.cshlp.org/subscriptions>

---

Published by Cold Spring Harbor Laboratory Press

## **Evolution of Splicing Regulatory Networks in *Drosophila***

C. Joel McManus<sup>1,3\*</sup> Joseph D. Coolon<sup>2</sup>, Jodi Eipper-Mains<sup>1</sup>, Patricia J. Wittkopp<sup>2</sup>, and Brenton R. Graveley<sup>1\*</sup>

<sup>1</sup>University of Connecticut Health Center, Institute for Systems Genomics, Department of Genetics and Developmental Biology, Farmington, CT 06030

<sup>2</sup>University of Michigan, Department of Ecology and Evolutionary Biology, Department of Molecular, Cellular, and Developmental Biology, Ann Arbor, MI 48109

<sup>3</sup>Carnegie Mellon University, Department of Biological Sciences, Pittsburgh, PA 15213

\*Corresponding Authors

## Abstract

The proteome expanding effects of alternative pre-mRNA splicing have had a profound impact on eukaryotic evolution. The events that create this diversity can be placed into four major classes – exon skipping, intron retention, alternative 5' splice sites and alternative 3' splice sites. Although the regulatory mechanisms and evolutionary pressures among alternative splicing classes clearly differ, how these differences affect the evolution of splicing regulation remains poorly characterized. We used RNA-seq to investigate splicing differences in *D. simulans*, *D. sechellia*, and three strains of *D. melanogaster*. Regulation of exon skipping and tandem alternative 3' splice sites (NAGNAGs) were more divergent than other splicing classes. Splicing regulation was most divergent in frame-preserving events and events in non-coding regions. We further determined the contributions of *cis*- and *trans*-acting changes in splicing regulatory networks by comparing allele-specific splicing in F1 interspecific hybrids, as differences in allele-specific splicing reflect changes in *cis*-regulatory element activity. We find that species-specific differences in intron retention and alternative splice site usage are primarily attributable to changes in *cis*-regulatory elements (median ~80% *cis*), while species-specific exon skipping differences are driven by both *cis*- and *trans*-regulatory divergence (median ~50% *cis*). These results help define the mechanisms and constraints influencing splicing regulatory evolution, and show that networks regulating the four major classes of alternative splicing are diverging through different genetic mechanisms. We propose a model in which differences in regulatory network architecture among classes of alternative splicing affect the evolution of splicing regulation.

## Introduction

Alternative pre-mRNA splicing is a central process in eukaryotic gene expression. The combination of exon sequences from single genomic loci into multiple isoforms greatly expands the proteome, magnifying the diversity of functional gene products from a comparably smaller number of genes (Nilsen and Graveley 2010). Alternative splicing is regulated through complex networks comprised of *cis*-regulatory sequence elements and *trans*-acting factors (Wang and Burge 2008). Three sequence elements interact directly with components of the spliceosome and are required for splicing of each intron – the 5' splice site, the branchpoint, and the 3' splice site. The sequences of these elements can modulate their “strength”, the probability that they will be recognized by the spliceosome. Additional elements in both introns and exons can act as splicing enhancers or silencers. Two families of *trans*-acting regulatory proteins, hnRNP and SR proteins, which generally repress and enhance interactions with the core spliceosome, respectively, recognize splicing enhancers and silencers.

Four major classes of alternative splicing events can be broadly defined - exon skipping (SE), intron retention (RI), alternative 5' splice sites (A5SS) and alternative 3' splice sites (A3SS)(Fig 1B). Comparative genomic analyses suggest significant differences in the regulation and evolution of splicing classes. Compared to constitutive exons, skipped exons tend to have weaker splice sites and higher sequence conservation (Clark and Thanaraj 2002; Koren et al. 2007; Merkin et al. 2012), which may reflect selective pressure to maintain the binding sites of splicing regulatory proteins. In contrast, intron retention appears to be largely dependent on intron length and *cis*-regulatory sequence elements recognized directly by the spliceosome (Sakabe and de Souza 2007). Alternative 5' and 3' splice sites appear to originate via mutations in ancestral constitutive exons, creating new splice sites that compete with the original sites (Koren et al. 2007). Perhaps the simplest examples of this involve tandem alternative 3' sites, a specific subclass of A3SS events separated by a single NAG (commonly referred to as “NAGNAGs”). Gains and losses of NAGNAG sites have accelerated protein evolution (Bradley

et al. 2012). The relative strength of alternative 5' and 3' splice sites is correlated with their usage, however only when the competing sites are in close proximity (Chasin 2007). Surprisingly, splicing regulatory sequences can modulate alternative 5' splice site usage through direct interaction with the spliceosome, bypassing the need for *trans*-acting protein factors (Yu et al. 2008).

Species-specific differences in exon skipping are common and imply that splicing regulatory divergence could contribute to phenotypic variation. Early work revealed that ~7-10% of exon skipping events were differentially regulated in human and chimpanzee liver and brain samples (Calarco et al. 2007; Blekhman et al. 2010; Lin et al. 2010). More recently, extensive comparisons in multiple tissues from numerous vertebrate species showed that exon skipping is diverging more rapidly than transcript abundance (Barbosa-Morais et al. 2012; Merkin et al. 2012). Divergent exon skipping was more frequent in transcripts encoding RNA binding proteins (Barbosa-Morais et al. 2012) and in protein domains targeted for phosphorylation (Merkin et al. 2012). Together these studies demonstrate considerable divergence of exon skipping. In comparison, the extent of divergence in other alternative splicing classes remains poorly characterized. The genetic mechanisms of splicing regulatory evolution are also unclear.

Comparative studies of *C. elegans* strains point towards *cis*-acting variants as the main contributors to divergent exon skipping. Although both *cis*- and *trans*-acting differences can affect strain-specific exon skipping (Barberan-Soler and Zahler 2008), 77% of strain-specific alternative splicing quantitative trait loci appear to act locally, suggesting changes in *cis*-regulatory elements (Li et al. 2010). Similarly, Lin *et al.* found that divergent exon skipping events in humans and chimpanzees were associated with increased sequence divergence, suggesting changes in *cis*-regulatory elements could be responsible for divergent splicing (Lin et al. 2010). However, divergent exon skipping in humans and chimpanzees was not associated with changes in splice site strength or density of exonic splicing regulatory elements (Irimia et al. 2009). More recently, the splicing patterns of 13 human exons were examined in a transgenic

mouse, revealing that *cis*-regulatory changes contributed significantly to interspecies differences in exon skipping (Barbosa-Morais et al. 2012). A similar survey from *Drosophila* F1 hybrid head tissue reported 65 genes showing *cis*-acting differences in alternative isoform expression (Graze et al. 2012)

Results from other work suggest that changes in the activity or abundance of *trans*-acting factors may contribute to divergent splicing. The expression levels of splicing regulatory proteins vary between species, suggesting *trans*-acting network changes (Grosso et al. 2008). In addition, the SR and hnRNP families of splicing regulatory proteins have evolved through numerous duplication and divergence events, highlighting the potential for *trans*-regulatory changes in splicing regulatory networks (Busch and Hertel 2011). For example, the testes-specific splicing regulator LS2 evolved from duplication of the constitutive splicing factor U2AF50 in *Drosophila*. The targets of LS2 have diverged substantially from those of U2AF50, leading to its current function as a splicing repressor (Taliaferro et al. 2011). Thus changes in *trans*-acting factor abundance, activity, or specificity could be an important source of splicing regulatory evolution. As a result the relative contributions of *cis*- and *trans*-regulatory changes towards divergence of alternative splicing remain uncertain. Furthermore, differences in the regulatory networks controlling the four classes of alternative splicing could affect the evolution of splicing regulation.

Here we used RNA-seq to compare alternative splicing in multiple *D. melanogaster* strains and one strain each of its closest phylogenetic relatives, *D. sechellia* and *D. simulans*. This choice of species allows us to sample a divergence time intermediate between that of previous studies investigating strains of *C. elegans* (Li et al. 2010) and vertebrate species (Barbosa-Morais et al. 2012; Merkin et al. 2012). Divergence of alternative splicing increases over evolutionary time, from ~5% among *D. melanogaster* strains to ~10% between species. Regulation of alternative splicing events in protein-coding regions was roughly half as likely to be divergent compared to non-coding regions. Of the coding region events that do exhibit

divergent splicing, frame shifting splicing events were half as likely to be divergent. Although skipped exons are known to have highly conserved sequences, we found they are the most likely class of events to have interspecific differences in regulation. Alternative 3' splice sites were also highly divergent, due mostly to divergence of NAGNAG tandem acceptor sites. Species-specific differences in splice site strength influenced divergent regulation at A3SS, much more than other classes of alternative splicing.

To estimate the relative effects of *cis*- and *trans*-acting regulatory changes in alternative splicing, we further compared allele-specific alternative splicing in hybrids of these species. In F1 hybrids, pre-mRNA from both parental alleles are subject to the same regulatory environments, thus observed differences in allele-specific splicing reflect *cis*-regulatory divergence. We used this approach previously to dissect *cis*- and *trans*-regulatory changes in mRNA abundance (McManus *et al.* 2010). By applying this to alternative splicing, we find that divergent regulation of intron retention and alternative splice sites has occurred almost exclusively through changes in *cis*-acting sequences, while divergence of exon skipping results from both *cis* and *trans*-acting regulatory changes. Intriguingly, exon skipping is the most dynamic class of alternative splicing throughout *D. melanogaster* development, suggesting that this class of alternative splicing may have more *trans*-regulatory factors than intron retention and alternative splice sites. Taken together, our results support a model in which differences in regulatory network architecture among alternative splicing classes affects the evolution of splicing regulation.

## Results

### Comparing alternative splicing among closely related *Drosophila* species

We used paired-end RNA-seq to compare alternative splicing in 2-10-day old adult female flies from three closely related *Drosophila* species, *D. melanogaster*, *D. sechellia*, and *D. simulans*. We also measured alternative splicing in three strains of *D. melanogaster* – the

original genome project strain (Celniker et al. 2002), the cosmopolitan strain *zhr* (Sawamura et al. 1993), and the African-type strain *z30* (Wu 1995) – to compare inter- and intra-specific splicing divergence (Fig 1A). The publicly available genome assemblies of these species are of vastly different quality. The genomes of *D. melanogaster*, *D. sechellia*, and *D. simulans* were originally sequenced to approximately 12-, 5-, and 3-fold coverage, respectively (Drosophila 12 Genomes Consortium et al. 2007). In addition, the strains used in our study likely differ from the reference genome to various extents. Differences in genome quality could complicate comparisons of alternative splicing. To avoid these complications, we resequenced the genomes of the strains (Coolon et al. 2012) and species used in this study to an average of 26-fold coverage. This further increased the size of the *D. sechellia*, and *D. simulans* assemblies by 1.6 and 12.6 Mbp, respectively, and corrected on average 806,805 SNPs and indels per strain (Table S1), improving our ability to map RNA-seq reads from each sample. Paired-end cDNA sequencing resulted in an average of 18.9 million read pairs from each sample, with ~3.2 million reads per sample aligning uniquely to exon-junction databases (Table S2).

We used exon-junction reads to determine splicing differences for the four major types of alternative splicing – skipped exons (SE), retained introns (RI), alternative 5' splice sites (A5SS), and alternative 3' splice sites (A3SS)(Fig 1B). These events were extracted from the *D. melanogaster* transcriptome annotation generated from the modENCODE developmental time course analysis (Graveley et al. 2011). A minimum threshold of 20 exon-junction reads per splicing event in all samples allowed comparisons of 193 SE, 772 RI, 71 A5SS, and 559 A3SS events. The “percent spliced in” (PSI) metric was calculated for splicing events from each sample, and Fisher’s exact tests were used to identify significant pairwise differences between PSI values ( $\Delta$ PSI  $\geq$  10%; FDR  $\leq$  5%) (Wang et al. 2008). The validity of the RNA-seq splicing analysis pipeline was confirmed using semi-quantitative RT-PCR (Fig. 1C) for six SE and four RI events. In both cases, the RNA-seq and RT-PCR PSI values agreed (Fig S1;  $R^2 = 0.84$ , N=50).

Because we generated sequence data from species with multiple divergence times, our dataset allows us to compare changes in splicing regulation with evolutionary divergence. *D. melanogaster* is estimated to have last shared a common ancestor with *D. simulans* and *D. sechellia* roughly 2.5 million years ago (Cutter 2008), *D. simulans* and *D. sechellia* are thought to have diverged 0.25 million years ago (Garrigan et al. 2012), and the North American and African *D. melanogaster* strains we used shared common ancestors roughly 10,000 years ago (Lachaise et al. 1988; David and Capy 1988). Splicing regulatory divergence was highly correlated with sequence divergence (Pearson's  $R^2 = 0.94$ ; Fig. S2). This correlation between the frequency of splicing divergence and divergence time was significant over all events ( $P = 0.029$ ). Separating the splicing events by type (Table S3) indicated that this correlation was strongest for SE ( $R^2 = 0.90$ ;  $P < 0.05$ ) and A3SS events ( $R^2 = 0.93$ ,  $P = 0.035$ ), was comparatively weaker for RI ( $R^2 = 0.77$ ;  $P < 0.13$ ) and not significant for A5SS events ( $R^2 = 0.5$ ;  $P < 0.29$ ). These data support the conclusion that alternative splicing regulatory divergence increases with divergence time.

Since many alternative splicing events are tissue-specific, interspecies differences in relative tissue abundance could result in inaccurate inferences of divergent splicing regulation. To investigate this potential caveat, we looked for enrichment of genes with tissue-specific functions using gene ontology analysis (GO). Of the splicing events analyzed, genes exhibiting divergent splicing were not enriched for any GO categories. To further examine possible links between tissue abundance and splicing divergence, we asked whether genes with divergent splicing were enriched in species differences in mRNA abundance, calculated as described previously (McManus et al. 2010). In all comparisons, divergently spliced genes were no more likely to be divergently expressed than genes with conserved splicing (Table S4). Thus, differences in tissue-specific expression do not appear to impact our analyses of alternative splicing divergence.

### **Differences in splicing regulatory divergence among classes of alternative splicing**

There are several differences in the regulatory divergence of the four classes of alternative splicing. SE events differed the most both among and between species, with 5.4% to 12.6% of these events showing divergent alternative splicing. SE events were 1.8-2.2 fold more likely to be divergent than other alternative splicing types in most intra- and inter-specific comparisons (FET;  $P < 0.04$ ; Fig 2A). NAGNAGs were also particularly divergent (Fig 2B). Up to 23% of NAGNAG sites had divergent regulation. In fact, NAGNAGs are 2- to 3-times more likely to be divergent than non-NAGNAG A3SS events (FET;  $P = 0.021$  *D. mel* vs *D. sec*;  $P=0.002$  *D. mel* vs *D. sim*). Thus exon skipping and tandem alternative 3' splice sites are the most divergent sub-groups of alternative splicing.

Alternative splicing can alter mRNA sequence both in protein coding and non-coding regions. Consequently, divergent splicing regulation can affect either the sequence of the resulting protein or regulatory regions. We compared the relative frequency of divergent splicing in coding and non-coding regions. Considering all classes of alternative splicing, events located in non-coding regions were more likely to be divergent than coding region events (Table 1). This enrichment of regulatory divergence in noncoding regions was significant for *D. melanogaster/D. sechellia* comparisons (2.05-fold enrichment, FET  $P < 7.8 \times 10^{-5}$ ), but not for other inter-specific comparisons. However, increased divergence of events in non-coding regions may be partially masked by the highly divergent NAGNAGs as ~90% of NAGNAGs are located in coding regions. After excluding NAGNAG events, enriched divergence in noncoding regions was even more apparent (1.5 – 2.4-fold; Table 1).

In protein coding regions, alternative splicing can either maintain the phase of the open reading frame, or more drastically affect the ORF by shifting the reading frame. Due to their less extreme effects on protein coding sequence, we reasoned that regulation of frame-preserving splicing events would be more divergent between species. Indeed, frame-preserving events were roughly twice as likely to be divergent when compared to frame-shifting events (Table 1; FET;  $P < 0.003$ ). This enriched divergence of frame-preserving events is seen even when

NAGNAG events are excluded ( $P = 0.023$  Table 1). These results show that regulation of alternative splicing diverges more rapidly in non-coding regions than in coding regions and (within coding regions) in frame-preserving events than in frame-shifting events.

Sequences flanking splice sites play an important role in alternative splicing by affecting splice site strength. For example, the difference in strength at proximal and distal NAGNAG splice sites is correlated with their relative usage (Bradley *et al.* 2012). Likewise, the combined strengths of the 5' and 3' splice sites of skipped exons correlates with their inclusion levels (Baek and Green 2005; Shepard *et al.* 2011). To investigate the relationship between splice site strength and alternative splicing in our dataset, we retrained the MaxEntScan scoring system (Yeo and Burge **2004**) using *D. melanogaster* splice site sequences and calculated maximum entropy scores for each species and strain. As expected, we found correlations in splice site strength and relative usage of alternative 5' and 3' splice sites ( $R^2 = 0.373$ ;  $R^2 = 0.404$ ;  $P < 10^{-16}$ ). Similarly, the combined strength of donor and acceptor sites was correlated with exon skipping and intron retention ( $R^2 = 0.105$ ;  $R^2 = 0.291$ ;  $P < 10^{-16}$ ). These results show that splice site strength is an important determinant of A5SS, A3SS, and RI alternative splicing levels in *Drosophila*, with less influence over SE events.

The correlation between splice site strengths and PSI values suggests that mutations affecting site strength might contribute to splicing regulatory evolution. To directly investigate this possibility we compared differences in splice site strength with differences in PSI for *D. melanogaster*, *D. simulans*, and *D. sechellia*. Weak significant correlations were seen between species-specific differences in splice site strength and splicing inclusion for A3SS and RI events, but not for SE and A5SS events (Table 2). Compared to other alternative splicing types, NAGNAG events showed the highest correlation of change in site strength with change in splicing regulation ( $R^2 = 0.16 - 0.18$ ;  $P < 10^{-4}$ , Table 2). Thus mutations affecting splice site strength contribute to divergent regulation of tandem 3' splice sites, and have little to no effect on RI, A5SS, and SE regulation.

***Cis-* and *trans*-regulatory differences underlying divergent alternative splicing.**

After identifying interspecific differences in alternative splicing, we next addressed the relative contributions of *cis*- and *trans*-acting differences in splicing regulation using interspecies F1 hybrids. In F1 hybrid nuclei, pre-mRNAs from both parental alleles are exposed to the same *trans*-regulatory environment. This normalization of *trans*-acting factors means that allele-specific splicing differences in hybrids reflect differences in pre-mRNA *cis*-regulatory elements. *Trans*-acting contributions can then be inferred by comparison of interspecific differences with allele-specific differences in the hybrid (Wittkopp *et al.* 2004). We compared allele-specific alternative splicing levels in two F1 hybrids, resulting from crosses of *D. melanogaster* with *D. sechellia*, and *D. simulans*, respectively, to determine the contributions of *cis*- and *trans*-acting regulatory differences to divergent alternative splicing. Paired-end sequencing of RNA isolated from adult females resulted in 49.8 million read-pairs from the *D. simulans* x *D. melanogaster* hybrids and 54.1 million read-pairs from the *D. sechellia* x *D. melanogaster* hybrids. Similar transcriptome coverage was obtained from mixed-control cDNA libraries prepared from a mixture of equal concentrations of total mRNA from each parent (Table S2). Sequence reads were aligned to genomes and splice-junction databases from each parental species to identify allele-specific reads that mapped uniquely to a single species without mismatches (McManus *et al.* 2010a). Paired-end sequencing of *D. melanogaster*/*D. simulans* F1 hybrids resulted in an effective read-length of 152 bp, thereby allowing identification of allele-specificity for ~ 73% of genomic and 82% of splice-junction reads. Data from *D. melanogaster* x *D. sechellia* hybrids included published 2 x 37 bp read pairs (McManus *et al.* 2010a), resulting in a somewhat lower fraction of allele-specific read assignments (Table S2).

Bioinformatic analyses can introduce errors in assigning reads to alleles (Degner *et al.* 2009), largely due to alignment bias in favor of alleles that more closely match a reference genome. Aligning reads to allele-specific genomes, as was done for this study, alleviates most of these errors (Stevenson *et al.* 2013). We used two approaches to assess the performance of

our allele-specific splicing analysis pipeline. First, we used allele-specific RT-PCR (McManus *et al.* 2010b) to measure  $\Delta$ PSI values from separate species and F1 hybrids for seven RI and eight SE events. Allele-specific  $\Delta$ PSI values measured via RT-PCR were consistent with RNA-seq measurements ( $R^2 = 0.70$ ;  $N = 60$ ; Fig S3). As a second approach to assess our allele-specific analysis pipeline, we compared PSI estimates from separate species mRNA libraries with allele-specific PSI values from libraries made by mixing equal amounts of two species mRNA (“mix-control”). PSI values from separate species samples correlate quite well with allele-specific PSIs from the mix-control libraries (average  $R^2 = 0.94$ ; Table S5). However,  $\Delta$ PSI values between species were less well correlated (average  $R^2 = 0.48$ ; Table S5). To avoid potential errors, we focused on “well behaved” splicing events - events for which separate and allele-specific  $\Delta$ PSI values varied by less than 10%. This subset includes ~70% of the alternative splicing events used in interspecific comparisons. Together, these results indicate that our bioinformatic analysis of allele-specific alternative splicing performs well.

We compared *D. melanogaster* to *D. simulans* and *D. sechellia* to determine the number of alternative splicing events with *cis*- and *trans*-regulatory differences. Example *cis*- and *trans*-acting differences in alternative splicing are shown in Figure 3. Of the 983 well-behaved splicing events in the *D. melanogaster*/*D. simulans* comparison, 64 had divergent regulation, 36 exhibited *cis*- and 10 had *trans*-regulatory divergence (FDR = 0.05). The higher frequency of *cis*-regulatory (compared to *trans*-regulatory) differences was also seen in the *D. melanogaster*/*D. sechellia* comparison. Of 681 well-behaved splicing events, 32 were divergently regulated, and 19 and 3 events exhibited *cis*- and *trans*-regulatory divergence, respectively (FDR = 0.05). Thus more alternative splicing events are affected by divergence in *cis*-regulatory elements than in *trans*-acting factors.

Differences in regulatory network structure among the four major types of alternative splicing could impact the evolution of splicing regulation. To examine this, we determined the relative frequency of *cis*- and *trans*-acting regulatory changes in each splicing class. While *cis*-

regulatory changes were most prevalent among RI, A5SS, and A3SS events, many SE events exhibited *trans*-regulatory changes (Fig 4A; Table 3). However, the existence of *trans*-regulatory differences does not, in and of itself, reflect the relative contribution of *trans*-regulatory divergence. To more directly evaluate the contributions of *cis*- and *trans*-regulatory changes on divergent splicing we compared the fraction of divergent splicing attributable to *cis*-regulatory differences (%*cis* (Wittkopp *et al.* 2007)) among splicing classes. As shown in Figure 4B, SE events had significantly lower %*cis* than other splicing classes, indicating that *cis*-regulatory changes contribute less to exon skipping divergence than to other classes of alternative splicing.

The importance of splice site strength for A3SS NAGNAG events could make them more susceptible to *cis*-regulatory divergence. We found that NAGNAG events were 3.7-fold and 7.4-fold more likely to diverge through *cis*-regulatory changes than non NAGNAG events when comparing splicing in *D. melanogaster* with *D. simulans* and *D. sechellia*, respectively ( $P < 0.026$ , FET). For the eight *cis*-divergent NAGNAG events, five have mutations in the NAGNAG site that alter one of the two AGs in one or more species. Another site has a CAGCAG to AAGCAG mutation. CAG is a better match to 3' end consensus sequences than AAG (Mount *et al.* 1992), suggesting this mutation shifts the balance in splice site strength. The remaining two NAGNAG events with *cis*-regulatory divergence preserve the NAGNAG sequence, but have multiple mutations in the upstream intron sequence. Thus NAGNAG sites are indeed hotspots for *cis*-regulatory changes, and most of the mutations responsible alter the NAGNAG sequence itself.

## Discussion

Here, we used RNA-seq to analyze the rate and mechanisms of alternative splicing regulatory evolution in *Drosophila*. While prior studies used this approach to examine the evolution of exon skipping (Barbosa-Morais *et al.* 2012; Merkin *et al.* 2012), the evolution of other types of alternative splicing remains largely unexplored. The four major classes of

alternative splicing are regulated through different molecular mechanisms. Our results provide a unique comparison of regulatory divergence among splicing classes, and suggest that differences in their underlying mechanisms of regulation strongly impact the course of their evolution.

We compared the regulation of SE, RI, A5SS, and A3SS among strains of *D. melanogaster* and its sister species *D. simulans* and *D. sechellia*. Our analysis shows that regulation of SE and NAGNAG events has diverged roughly twice as rapidly as other classes of alternative splicing. One interpretation of this result is that SE and NAGNAG regulatory networks are more pliable than other classes of alternative splicing. Increased pliability could reflect reduced selective pressure to maintain inclusion levels and/or increased complexity of their regulatory networks. In the case of NAGNAGs, the former explanation seems most reasonable, as their usage alters only a single amino-acid. Indeed, a recent study found that single codon insertions and deletions were greatly enriched at the 5' ends of exons, consistent with frequent mutational gain and loss of NAGNAG sites (Bradley et al. 2012).

Divergent exon skipping is likely to have more significant effects on protein coding sequences. As such, the rapid divergence of SE requires another explanation. Landry and colleagues have shown that mutational variance, or probability that a mutation affects the expression of a gene, is correlated with the number of *cis*- and *trans*-regulatory components that control a gene's expression (Landry et al. 2007). Genes with more complex regulatory networks are more susceptible to changes in their regulation. One possibility is that SE regulatory networks are more complex than those that control other types of alternative splicing. If this is true, we would expect SE to be more dynamically regulated than other splicing classes. To investigate this, we calculated the switch scores (Maximum PSI - Minimum PSI) of alternative splicing events across the lifecycle of *D. melanogaster* (Graveley et al. 2011) and compared switch scores between splicing classes (Fig 5A). SE are the most developmentally dynamic of all splicing events, leading credence to the complexity model. Similarly, exon skipping events

are more sensitive to RNAi-mediated knockdown of splicing factors in S2 cells (Brooks et al. submitted), suggesting that their *trans*-mutational target size is larger than that of other splicing classes. Thus the comparatively rapid divergence of exon skipping may reflect higher complexity of SE regulatory networks.

The relative contributions of *cis*- and *trans*-regulatory differences to splicing divergence are still debated. While large scale studies have reported different conclusions regarding the role of *cis*-regulatory changes in SE regulation (Li et al. 2010; Lin et al. 2010; Irimia et al. 2009), divergent skipping of 13 mouse and human exons was recently attributed mostly to *cis*-regulatory differences (Barbosa-Morais et al. 2012). Unlike the human and mouse comparison, we found that *trans*-regulatory divergence has contributed substantially to differences in exon skipping among *Drosophila*. Several studies have shown that *cis*-regulatory differences in mRNA abundance preferentially accumulate over evolutionary time (Wittkopp et al. 2007; Emerson et al. 2010) (Coolon et al., submitted). Thus one explanation for the larger importance of *cis*-regulatory divergence observed by Barbosa-Morais and colleagues could be that their study used a much more divergent set of species (mouse and human).

Prior to this study, comparatively little was known regarding regulatory evolution of other types of splicing events. We determined the contributions of *cis*- and *trans*-regulatory changes in all major classes of alternative splicing events by analyzing allele-specific splicing patterns in F1 hybrids. Surprisingly, we found that the genetic mechanisms responsible for splicing evolution varied between classes. Although species differences in RI, A3SS and A5SS can be attributed almost entirely to *cis*-regulatory sequence differences, *cis*- and *trans*-regulatory changes have contributed more equally to divergent SE.

The regulatory evolution of mRNA abundance and alternative splicing appear to be on different trajectories, in both the rate and path of their divergence. Species differences in mRNA abundance are much more common than divergent splicing regulation, with at least a third of the transcriptome showing significant differences in gene expression (McManus et al. 2010a;

Ranz et al. 2004; Rifkin et al. 2003)(Coolon et al., submitted). In contrast, we observed that roughly one tenth of the transcriptome exhibits divergent splicing regulation. Multiple studies have shown that *trans*-regulatory changes contribute greatly to differences in mRNA abundance, both within and between closely related species (Emerson et al. 2010; McManus et al. 2010a)(Coolon et al., submitted). In contrast, changes in *cis*-regulatory sequences play a more prominent role in splicing regulatory evolution, and only SE events exhibited substantial *trans*-regulatory divergence. Intriguingly, higher complexity of SE regulatory networks would also be expected to increase their susceptibility to *trans*-regulatory divergence.

We propose a model in which the networks that regulate SE are more complex than those of other splicing classes. This increased complexity leads to more rapid divergence of SE and increased *trans*-regulatory changes by providing a larger mutational target area (Fig 5B). Consistent with this model, we found that regulation of SE diverges more rapidly and is more influenced by *trans*-regulatory divergence than that of other splicing classes. In addition, exon skipping is much less sensitive to splice site strength, and changes in site strength contribute little to divergent splicing regulation. In summary, RI, A5SS, and A3SS are diverging almost entirely through *cis*-regulatory changes, while *trans*-regulatory divergence has greater impacts on SE. The differences in regulatory network architecture among classes of alternative splicing affect the evolution of splicing regulation. Because deep coverage is necessary for accurate splicing analysis, our results represent the evolutionary trajectory of events found on genes highly expressed in many tissue types. Future work utilizing richer sequence depth from specific tissues will be necessary to determine the extent to which our results are also applicable to tissue-specific alternative splicing.

## **Materials and Methods**

### **Flies and crosses:**

Much of the data used in this study was previously reported. All data used in this study were obtained from adult female flies 2-10 days post eclosion grown on standard *Drosophila* media. Specific conditions for the *D. melanogaster* strain *zhr* carrying the hybrid rescuing *Zhr1* chromosome (full genotype, *XYS.YL.Df(1)Zhr*; (Sawamura et al. 1993)(Ferree and Barbash, 2009) and the Zimbabwean strain *z30* (Begun and Aquadro 1993)(Wu et al., 1995) were previously reported (Coolon et al. 2012). Conditions for the *D. melanogaster* genome reference strain 14021-0231.36 were also previously reported (Graveley et al. 2011). Conditions for *D. melanogaster* 14021-0231.36 X *D. sechellia* (14021-0428.25) hybrids was previously described (McManus et al. 2010a). The *D. simulans tsimbazaza* strain (Hollocher et al. 2000) and *D. melanogaster zhr* X *D. simulans tsimbazaza* hybrids were grown as described by Coolon et al., (Coolon et al. 2012)(Coolon et al, submitted).

### **Library preparation and Sequencing**

Total RNA from each species was prepared by grinding 20 adult female flies in TRIzol (Invitrogen) and treated with DNase I (Ambion DNA-free) to remove DNA contaminants. RNA-seq libraries were prepared as previously described (McManus et al., 2010). 10 ug of total RNA was used to prepare libraries for each pure species and hybrid sample, while 5 ug of each species RNA was mixed together for mixed samples. Poly(A)+ RNA was purified by two incubations with oligo-dT magnetic beads (Invitrogen dymal), and fragmented using an RNA fragmentation reagent (Ambion). Reverse transcription was performed using random primers and Superscript II (Invitrogen). ~350 bp fragments of cDNA were purified by electrophoresis on a 2% agarose gel and extracted. Size-selected cDNA fragments were used as input material for library preparation using the Paired-end Genomic DNA library kit (Illumina). Genomic DNA was prepared using the DNeasy Blood and Tissue kit (Qiagen). 10 ug of DNA was used as input material for the Paired-end Genomic DNA library kit (Illumina). Genomic DNA was fragmented using Illumina supplied nebulizers and size-selected as described above. Libraries were

subjected to 76 cycles of paired end sequencing on an Illumina GA IIx. Basecalling was performed using Illumina CASSAVA. For total readcounts and depth of coverage, see supplementary materials. Additional data from prior work was also included in this study, and is available under SRA accession numbers SRA052065 (*D. melanogaster* zhr and z30 gDNA), SRA009364 (*D. melanogaster* reference strain 5d adult female; modENCODE), and GEO accession number GSE20421 (*D. sechellia*, and hybrid mRNA).

### **Genome resequencing and assembly**

Genomic sequence reads from *D. sechellia*, *D. simulans*, and *D. melanogaster* were aligned to the droSec1, droSim1, and dm3 assembly releases, respectively using BWA (version 0.5.6)(Li and Durbin 2010). Reads were aligned separately using default parameters and merged using the BWA sampe command. The resulting SAM format files were converted to BAM format and snps and indels were called using SAMtools (version 0.1.7a; commands view, sort, and pileup)(Li et al. 2009). SNPs and indels were filtered using the samtools.pl varFilter command to retain variants with phred quality scores greater than 20 (estimated 1% error). A custom Perl script, snp\_adder.pl, was used to produce strain-specific genomes. This script modifies reference genome sequence to incorporate the filtered variants. Insertion / deletion positions were recorded and used to produce custom chain files to use with the UCSC liftOver script.

For *D. sechellia* and *D. simulans*, gDNA sequence reads were remapped to the strain-specific genomes. Non-mappable read-pairs were assembled into contigs using Velvet (version 1.0.15; parameters: velveth k=35; velvetg -exp\_cov auto, -min\_contig\_lgth 300)(Zerbino and Birney 2008). These contigs were aligned to the strain-specific genomes using Blat. Contigs whose 5' and 3' ends both align to the strain-specific genome were retained and extended 100 bp in each direction. These "extended" contigs span gaps in each organism's genomic sequence. Extended contigs were combined with the strain-specific genomes to create an intermediate target sequence for gDNA read alignment. Genomic DNA was remapped to this

intermediate target genome, and non-mappable read-pairs were assembled into contigs as above. The resulting contigs were combined with extended contigs and aligned to the dm3 reference genome using LASTZ (Harris 2007). Contigs that aligned uniquely to the *D. melanogaster* reference genome (dm3) were kept as the “extra-genome”. LiftOver chain files were produced from the LASTZ alignment output using the axtChain, chainNet, and netChainSubset utilities from the UCSC Genome Browser (Kent et al. 2003).

Custom Perl scripts were used to create exon junction databases for allele-specific alignment, using gene annotations generated by the modENCODE Consortium (Graveley et al. 2011). Junction windows were chosen to require that each exon is covered by at least 6 nt of a junction read. “Exact” junctions were created to allow alignment to exons shorter than the read length (76 nt). In this case, a junction window would contain sequence from more than two exons, x1- x2 (short) – x3, while maintaining the length of the junction window. Junction window genome coordinates from *D. melanogaster* were translated to each of the resequenced genomes using the UCSC liftOver tool. Sequence for each junction window was extracted and joined into “exact” junction databases. Junction databases were filtered to remove junctions lacking defined coordinates in one or more species or strains. In order to identify RNA-seq reads relevant to intron retention, genomic coordinates overlapping the splice-site by at least 6 nt were identified. Reads aligning to these regions were taken as evidence of intron retention.

### **Allele-specific alignment.**

At some genomic coordinates, gDNA resequencing identified heterozygous sites. If ignored, these sites could introduce error in allele-specific alignment steps. Thus target genomes for allele-specific alignment were produced by adding heterozygous sites to each strains genome using snp\_adder.pl. IUPAC nucleotide codes were used to represent heterozygous sites (e.g. “R” for A / G heterozygote). RNA-seq reads were aligned to genomic and junction coordinates using MOSAIK (version 1.0.1388; parameters: -hs 13 -mm 0 -j -mhp 100 -act 20) (Busby et al. 2011).

For single-species RNA-seq samples, reads were aligned to the corresponding genome and junction sequences. For mixed (e.g. *D. melanogaster* RNA + *D. simulans* RNA) and F1 hybrid samples, reads were aligned sequentially to each genome in order to identify allele-specific alignments. The alignment procedure was essentially performed as previously reported (McManus et al. 2010a). Reads were first aligned to genome sequences. Reads that failed to align to genomic loci were then aligned to exon junction sequences. Remaining RNA-seq reads were trimmed 13 nt and realigned for 4 total cycles (76, 63, 50, and 37 nt). Alignment coordinates were converted to bed format using MOSAIK, with a correction step to convert MOSAIK BED files (1-based) to proper BED format (0-based). Genomic alignment coordinates for each species and strain were then converted to the corresponding locations in the *D. melanogaster* reference genome using the UCSC liftOver tool and custom chain files. RNA-seq reads mapping to unique genomic coordinates (without mismatches) in a single species were considered allele-specific and used in further analyses.

### **Splicing analysis:**

Gene annotations were sorted into four alternative splicing event categories (exon skipping, alternative 5' splice sites, alternative 3' splice sites, and intron retention). The intersectBed program (Quinlan and Hall 2010) was used to identify genomic reads that crossed splice sites from annotated intron retention events. Custom Perl scripts parsed the junction database alignments to count the RNA-seq reads corresponding to each event. These scripts create tables of junction and genomic hits for each splice event (Tables S6 through S9). Splicing analysis was performed for all events with a minimum of 20 total RNA-seq reads (junctions for exon skipping and alternative splice sites, junction and genomic reads for intron retention). The 20 read threshold was chosen based on prior work (Pan et al. 2008; Wang et al. 2008). However, the results of our analysis are essentially the same using a lower 10 read threshold (Fig S4). Percent Spliced In (PSI) values were calculated using the following formulas.

Exon skipping:

$$PSI = \left( \frac{\frac{\sum IJ}{2}}{\left( \frac{\sum IJ}{2} + \sum EJ \right)} \right) \times 100$$

Two common exons, “C1” and “C2”, flank an alternative exon, “A”. When “A” is longer than the read length (76), two junctions support exon inclusion, C1-A and A-C2. When A is shorter than the read length the C1-A-C2 junction can also be identified in RNA-seq data. Together, the C1-A, A-C2, and C1-A-C2 junctions are defined as inclusion junctions (*IJ*) while C1-C2 are exclusion junctions (*EJ*).

Alternative Splice Sites:

$$PSI = \left( \frac{\sum DA_1}{\sum DA_2} \right) \times 100 \quad PSI = \left( \frac{\sum D_1A}{\sum D_2A} \right) \times 100$$

Alternative splice sites are defined as sites with either one 5' donor site and two alternative 3' acceptor site (alternative 3'ss), or two alternative 5' donor sites and one 3' acceptor site (alternative 5'ss). In both situations, two alternative splice junctions are possible. Alternative 3'ss allow DA1 (donor-acceptor1) and DA2 (donor-acceptor 2), while alternative 5'ss allow D1A and D2A junctions.

Intron retention:

$$PRI = \left( \frac{\left( \frac{\sum DI + \sum IA}{2} \right)}{\sum DA + \left( \frac{\sum DI + \sum DA}{2} \right)} \right) \times 100$$

776 retained introns annotated in the modENCODE survey of developmental gene expression (Graveley *et al.* 2011) were analyzed for regulatory divergence. Intron retention analysis was restricted to introns with single donor and acceptor splice sites. Junction sequences joining the donor and acceptor (DA) supported intron splicing, while sequence reads

that aligned across the donor or acceptor sites into the intron (DI and IA) by at least 6 nucleotides suggested intron retention. Percent retained intron (PRI) was calculated. While all of these events had retention frequencies > 5% in at least one developmental time point from the modENCODE study, 46 (6%) did not appear to be retained in any of the adult females we surveyed.

Tests of statistical significance were performed using R. Fisher's exact test was used to compare PSI values for each pair-wise comparison of strains and species. Q-values were calculated using the *qvalue* module in R (Storey and Tibshirani 2003). q-value cutoffs corresponding to an FDR of 0.05 were applied. In addition, only splicing events for which both samples had  $\geq 20$  informative junction reads and PSI differences ( $\Delta\text{PSI}$ ) > 10% were considered further. Comparisons of allele-specific PSI values from F1 hybrid samples were also performed using Fisher's exact test to identify *cis*-acting differences in splicing. The ratio of PSI values between parent alleles (e.g.  $D. mel_{\text{PSI}} / D. sim_{\text{PSI}}$ ) were compared to allele-specific PSI ratios from hybrids using the method of Altman and Bland (Altman and Bland 2003). The standard error of the difference in parental and allele-specific PSI ratios was calculated and used to calculate z-scores and p-values. Q-values were further calculated and an FDR cutoff of 0.05 was applied to tests of *cis*- and *trans*-acting splicing divergence. Less stringent FDR thresholds of 0.1 and 0.2 were tested and gave highly similar results. Interspecies differences in mRNA abundance were compared as described (McManus *et al.* 2010), and divergent expression and splicing were cross compared using Fisher's exact test in R.

## Validation

Species-specific RT-PCR (McManus *et al.* 2010b) was used to validate *cis*- and *trans*-acting differences in alternative splicing. Seven events from RI and 8 events from SE were chosen for validation. Primers were designed such that the 3' ends of each primer crossed snps. Total RNA was reverse transcribed using random primers and SuperScript II reverse

transcriptase according to manufacturer specifications (Invitrogen). cDNA was amplified for 30 cycles using species-specific primers and Taq (Invitrogen). PCR products were separated on 2% agarose gels and visualized by ethidium bromide staining. Gel images were processed with ImageJ (Schneider et al. 2012) to quantify products. PSI values were calculated by normalizing brightness by PCR product length. RNA-seq and RT-PCR PSI values were compared for linear correlation using R.

### **Data access**

High-throughput sequencing data have been submitted to the NCBI Sequence Read Archive under accession number SRP023274. Genome sequences are accessible from at the McManus (<http://www.bio.cmu.edu/labs/mcmanus/index.html>), Wittkopp (<http://www.umich.edu/~pwlabs/>), and Graveley (<http://graveleylab.cam.uchc.edu/Graveley/>) laboratory websites. Contigs with novel sequence from *D. simulans* and *D. sechellia* have been deposited at DDBJ/EMBL/GenBank under the accession numbers JAQJ00000000, and JAQR00000000, respectively.

### **Acknowledgements**

We are grateful to the University of Connecticut Health Center Genomics Core Facility for providing access to Illumina Sequencers. We also thank Gene Yeo for assistance in retraining MaxEntScan splice site scoring models using *D. melanogaster* sequences, and Kraig Stevenson for bioinformatic assistance. This work was supported by grants from the National Institutes of Health (5R01GM095296) to BRG, the National Science Foundation (MCB-1021398) to PJW, and the National Institutes of Health (5F32GM089009-02) to JDC.

### **Author contributions**

CJM, BRG, JDC, and PJW conceived and designed experiments. JDC reared, crossed, and collected flies. CJM and JDC prepared mRNA sequencing libraries. CJM prepared gDNA sequencing libraries. CJM and BRG collected high-throughput sequence data. CJM assembled strain- and species-specific genomes, with input from JDC. CJM and JEM identified alternative splicing events. CJM designed and performed all other data analysis, RT-PCR validation and prepared all figures. CJM wrote the manuscript, with input from all authors.

### Disclosure declaration

The authors are not aware of any conflicts of interest.

### Figure Legends

**Figure 1.** Comparing splicing regulation among *Drosophila* species. **A.** Comparison of divergence times for strains and species used. **B.** The four major classes of alternative splicing. Constitutive and alternative exonic regions are depicted in blue and purple, respectively. **C.** Example of cross-species comparison of intron retention using RNA-seq. Above, IGV genome browser tracks depict differences in read coverage within the retained intron in each strain and species. The *Fit1* intron is more frequently retained in all strains of *D. melanogaster*, compared to *D. simulans* and *D. sechellia*. Below, RT-PCR using primers spanning the retained intron correlates with RNA-seq estimates of divergent splicing.

**Figure 2.** Rates of splicing regulatory divergence among classes of alternative splicing. The percentage of all testable splicing events from each comparison is shown. **A.** Regulation of skipped exons is diverging more rapidly than that of other splicing classes, while A3SS also show frequent divergence in the most distant comparisons. **B.** Tandem A3SS (NAGNAG) are extremely divergent, compared to other A3SS.

**Figure 3.** *cis* and *trans*-acting differences in alternative splicing. IGV Genome browser images show RNA-seq read coverage, depicted in a bar graph, above. Arcs depict splice junction read coverage (per million mapped junction reads). The width of each arc represents the relative

number of junction reads. For exon skipping, exclusion junctions are shown in blue and inclusion junctions are shown in red. The percent spliced in (PSI) for each sample is shown above the alternative event. Gel images show the results of RT-PCR experiments using species-specific primers. **A.** An intron in *CG12006* is retained much more frequently in *D. melanogaster* than in *D. sechellia*. In F1 hybrids, allele-specific splicing differences show that the divergence is predominantly *cis*-acting. **B.** An exon in *nuf* is skipped more frequently in *D. melanogaster* than in *D. simulans*. Allele-specific RNA-seq from F1 hybrids shows equal inclusion levels, suggesting that divergence in *nuf* splicing is predominantly *trans*-acting.

**Figure 4.** Exon skipping divergence is influenced more by differences in *trans*-acting factors than other classes of alternative splicing. **A.** Percentage of alternative splicing events affected by *cis*- and *trans*-acting regulatory divergence for two F1 hybrid crosses. Skipped exons (SE) have many more events affected by *trans*-regulatory divergence. **B.** Relative contribution of *cis*-regulatory divergence in divergent alternative splicing. The fraction of species-specific splicing differences attributable to *cis*-acting changes (%*cis*) is plotted for four classes of alternative splicing. Exon skipping has a much lower contribution from *cis*-acting changes, reflecting a higher contribution of *trans*-regulatory divergence. P-values indicate the results of wilcoxon rank sum tests comparing the mean %*cis* of different alternative splicing types.

**Figure 5.** Differences in regulatory network architecture among classes of alternative splicing impact their regulatory divergence **A.** Skipped exons are more dynamically regulated throughout development. Violin plots show the distribution of switch scores (maximum percent inclusion minus minimum percent inclusion) for splicing events from each class of alternative splicing throughout development in *D. melanogaster* (Graveley et al. 2011). The median switch score (white dots) is highest for SE events. **B.** Model of regulatory network differences among splicing classes. Skipped exons have a larger *trans* mutational target size compared to other splicing classes and SE regulation diverges more rapidly through changes in *trans*-acting factors.

**Figure S1.** Validation of RNA-seq measurements of alternative splicing. IGV genome browser images show coverage for genomic reads and junction reads at two alternative splicing events (**A.** and **B.**). Gel images show RT-PCR measurements of percent inclusion (PSI) for each event from each sample. **C.** Scatter plot comparing PSI measurements made by RNA-seq and RT-PCR. Red points indicate skipped exon events, while blue points indicate retained intron events.

**Figure S2.** Comparison of alternative splicing divergence with evolutionary time. Points show average number of events with polymorphic regulation among *D. melanogaster* strains (left), divergent regulation between *D. simulans* and *D. sechellia* (middle) and divergent regulation between *D. melanogaster* and either *D. simulans* or *D. sechellia* (right). Splicing events are separated by type.

**Figure S3.** Validation of allele-specific RNA-seq splicing measurements with RT-PCR. Graph compares percent inclusion (PSI) measurements made using RNA-seq (x axis) with those made by RT-PCR (y axis).

**Figure S4.** Results of splicing regulatory analysis using a 10 read minimum threshold. These results mirror those seen using a 20 read minimum cutoff. **A.** Regulation of skipped exons is diverging more rapidly than that of other splicing classes, while A3SS also show frequent divergence in the most distant comparisons. **B.** Relative contribution of *cis*-regulatory divergence in divergent alternative splicing. Percent *cis*, or the fraction of species-specific splicing differences attributable to *cis*-acting changes, is plotted for four classes of alternative splicing. Exon skipping has a much lower contribution from *cis*-acting changes, reflecting a higher contribution of *trans*-regulatory divergence.

## References

Altman DG, Bland JM. 2003. Interaction revisited: the difference between two estimates. *BMJ* **326**: 219.

- Baek D, Green P. 2005. Sequence conservation, relative isoform frequencies, and nonsense-mediated decay in evolutionarily conserved alternative splicing. *Proceedings of the National Academy of Sciences* **102**: 12813–12818.
- Barberan-Soler S, Zahler AM. 2008. Alternative splicing and the steady-state ratios of mRNA isoforms generated by it are under strong stabilizing selection in *Caenorhabditis elegans*. *Mol Biol Evol* **25**: 2431–2437.
- Barbosa-Morais NL, Irimia M, Pan Q, Xiong HY, Gueroussov S, Lee LJ, Slobodeniuc V, Kutter C, Watt S, Colak R, et al. 2012. The Evolutionary Landscape of Alternative Splicing in Vertebrate Species. *Science* **338**: 1587–1593.
- Begun DJ, Aquadro CF. 1993. African and North American populations of *Drosophila melanogaster* are very different at the DNA level. *Nature* **365**: 548–550.
- Blekhman R, Marioni JC, Zumbo P, Stephens M, Gilad Y. 2010. Sex-specific and lineage-specific alternative splicing in primates. *Genome Res* **20**: 180–189.
- Bradley RK, Merkin J, Lambert NJ, Burge CB. 2012. Alternative Splicing of RNA Triplets Is Often Regulated and Accelerates Proteome Evolution ed. L.D. Hurst. *PLoS Biol* **10**: e1001229.
- Busby MA, Gray JM, Costa AM, Stewart C, Stromberg MP, Barnett D, Chuang JH, Springer M, Marth GT. 2011. Expression divergence measured by transcriptome sequencing of four yeast species. *BMC Genomics* **12**: 635.
- Busch A, Hertel KJ. 2011. Evolution of SR protein and hnRNP splicing regulatory factors. *WIREs RNA* **3**: 1–12.

- Calarco JA, Xing Y, Cáceres M, Calarco JP, Xiao X, Pan Q, Lee C, Preuss TM, Blencowe BJ. 2007. Global analysis of alternative splicing differences between humans and chimpanzees. *Genes Dev* **21**: 2963–2975.
- Celniker SE, Wheeler DA, Kronmiller B, Carlson JW, Halpern A, Patel S, Adams M, Champe M, Dugan SP, Frise E, et al. 2002. Finishing a whole-genome shotgun: Release 3 of the *Drosophila melanogaster* euchromatic genome sequence. *Genome Biol* **3**: research0079.1.
- Chasin LA. 2007. Searching for splicing motifs. *Adv Exp Med Biol* **623**: 85–106.
- Clark F, Thanaraj TA. 2002. Categorization and characterization of transcript-confirmed constitutively and alternatively spliced introns and exons from human. *Hum Mol Genet* **11**: 451–464.
- Coolon JD, Stevenson KR, McManus CJ, Graveley BR, Wittkopp PJ. 2012. Genomic imprinting absent in *Drosophila melanogaster* adult females. *CellReports* **2**: 69–75.
- Cutter AD. 2008. Divergence times in *Caenorhabditis* and *Drosophila* inferred from direct estimates of the neutral mutation rate. *Mol Biol Evol* **25**: 778–786.
- David JR, Capy P. 1988. Genetic variation of *Drosophila melanogaster* natural populations. *Trends in Genetics* **4**: 106–111.
- Degner JF, Marioni JC, Pai AA, Pickrell JK, Nkadori E, Gilad Y, Pritchard JK. 2009. Effect of read-mapping biases on detecting allele-specific expression from RNA-sequencing data. *Bioinformatics* **25**: 3207–3212.

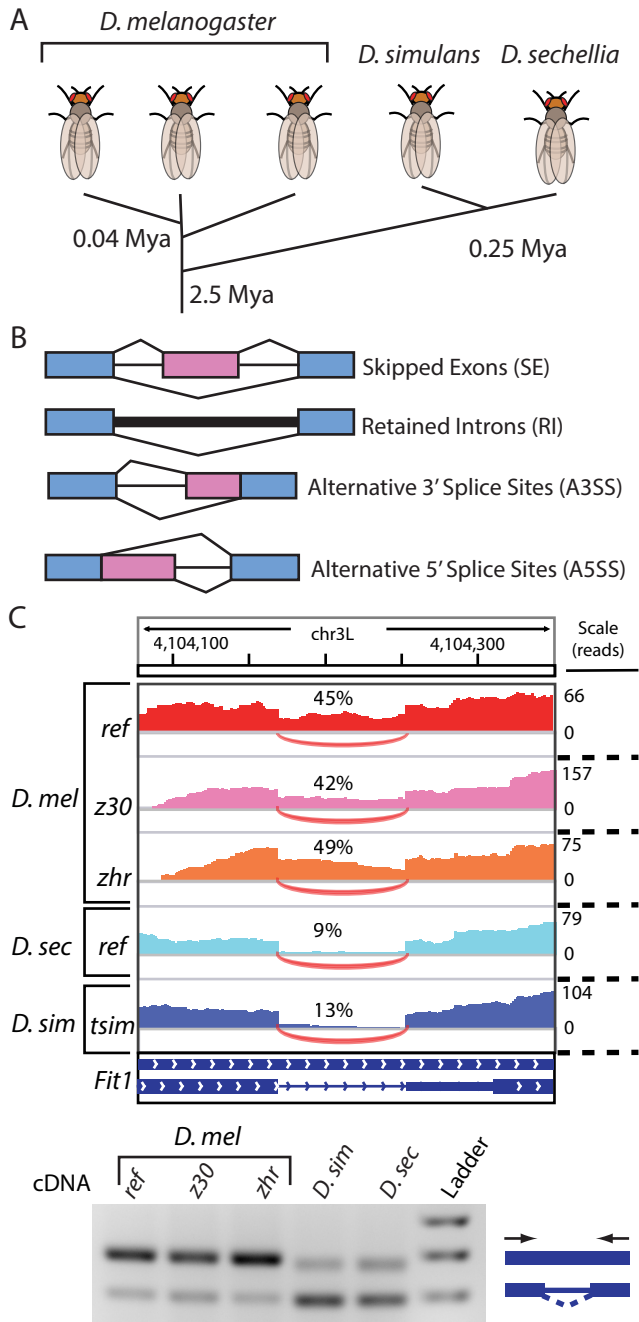
- Drosophila 12 Genomes Consortium, Clark AG, Eisen MB, Smith DR, Bergman CM, Oliver B, Markow TA, Kaufman TC, Kellis M, Gelbart W, et al. 2007. Evolution of genes and genomes on the *Drosophila* phylogeny. *Nature* **450**: 203–218.
- Emerson JJ, Hsieh LC, Sung HM, Wang TY, Huang CJ, Lu HHS, Lu MYJ, Wu SH, Li WH. 2010. Natural selection on *cis* and *trans* regulation in yeasts. *Genome Res* **20**: 826–836.
- Garrigan D, Kingan SB, Geneva AJ, Andolfatto P, Clark AG, Thornton K, Presgraves DC. 2012. Genome sequencing reveals complex speciation in the *Drosophila simulans* clade. *Genome Res*.
- Graveley BR, Brooks AN, Carlson JW, Duff MO, Landolin JM, Yang L, Artieri CG, van Baren MJ, Boley N, Booth BW, et al. 2011. The developmental transcriptome of *Drosophila melanogaster*. *Nature* **471**: 473–479.
- Graze RM, Novelo LL, Amin V, Fear JM, Casella G, Nuzhdin SV, McIntyre LM. 2012. Allelic Imbalance in *Drosophila* Hybrid Heads: Exons, Isoforms, and Evolution. *Mol Biol Evol* **29**: 1521–1532.
- Grosso AR, Gomes AQ, Barbosa-Morais NL, Caldeira S, Thorne NP, Grech G, Lindern von M, Carmo-Fonseca M. 2008. Tissue-specific splicing factor gene expression signatures.
- Harris R. 2007. Improved Pairwise Alignment of Genomic DNA. *PhD Thesis in Computer Science and Engineering* 1–84.
- Hollocher H, Agopian K, Waterbury J, O'Neill RW, Davis AW. 2000. Characterization of defects in adult germline development and oogenesis of sterile and rescued female hybrids in crosses between *Drosophila simulans* and *Drosophila melanogaster*. *J Exp Zool* **288**: 205–218.

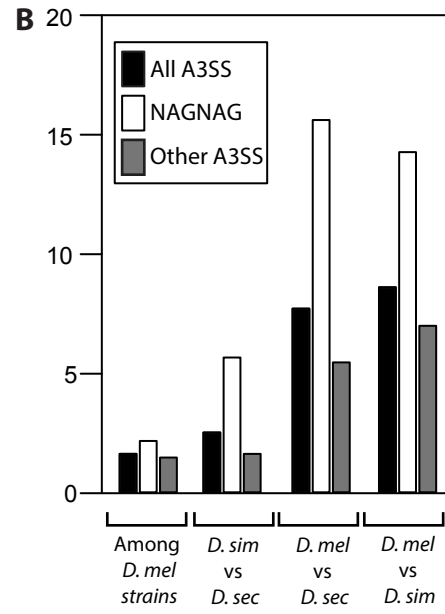
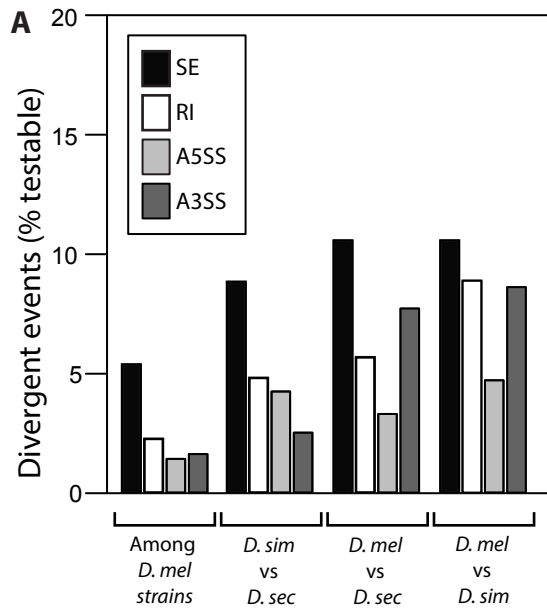
- Irimia M, Rukov JL, Roy SW. 2009. Evolution of Alternative Splicing Regulation: Changes in Predicted Exonic Splicing Regulators Are Not Associated with Changes in Alternative Splicing Levels in Primates ed. J. Valcárcel. *PLoS ONE* **4**: e5800.
- Kent W, Baertsch R, Hinrichs A. 2003. Evolution's cauldron: Duplication, deletion, and rearrangement in the mouse and human genomes.
- Koren E, Lev-Maor G, Ast G. 2007. The emergence of alternative 3' and 5' splice site exons from constitutive exons. *PLoS Comput Biol* **3**: e95.
- Lachaise D, Cariou M, David JR, Lemeunier F, Tsacas L, Ashburner M. 1988. Historical Biogeography of the *Drosophila melanogaster* Species Subgroup. *Evolutionary Biology* **22**: 159-225.
- Landry CR, Lemos B, Rifkin SA, Dickinson WJ, Hartl DL. 2007. Genetic Properties Influencing the Evolvability of Gene Expression. *Science* **317**: 118–121.
- Li H, Durbin R. 2010. Fast and accurate long-read alignment with Burrows-Wheeler transform. *Bioinformatics* **26**: 589–595.
- Li H, Handsaker B, Wysoker A, Fennell T, Ruan J, Homer N, Marth G, Abecasis G, Durbin R, 1000 Genome Project Data Processing Subgroup. 2009. The Sequence Alignment/Map format and SAMtools. *Bioinformatics* **25**: 2078–2079.
- Li Y, Breitling R, Snoek LB, van der Velde KJ, Swertz MA, Riksen J, Jansen RC, Kammenga JE. 2010. Global Genetic Robustness of the Alternative Splicing Machinery in *Caenorhabditis elegans*. *Genetics* **186**: 405–410.
- Lin L, Shen S, Jiang P, Sato S, Davidson BL, Xing Y. 2010. Evolution of alternative splicing in primate brain transcriptomes. *Hum Mol Genet* **19**: 2958–2973.

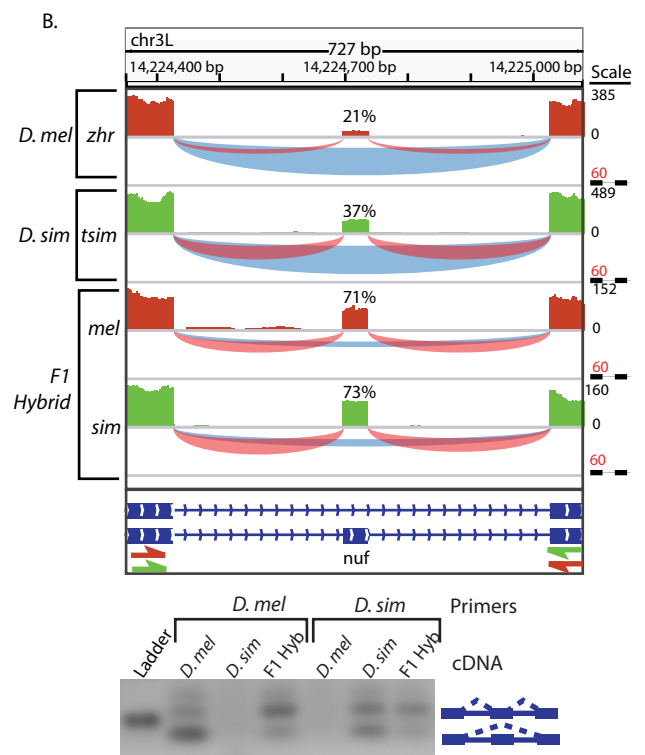
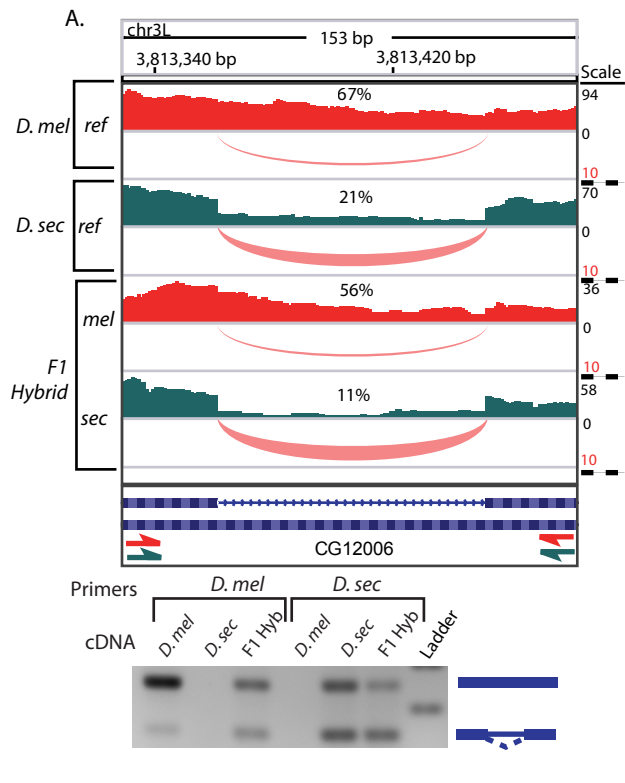
- McManus CJ, Coolon JD, Duff MO, Eipper-Mains J, Graveley BR, Wittkopp PJ. 2010a. Regulatory divergence in *Drosophila* revealed by mRNA-seq. *Genome Res* **20**: 816–825.
- McManus CJ, Duff MO, Eipper-Mains J, Graveley BR. 2010b. Global analysis of *trans*-splicing in *Drosophila*. *Proc Natl Acad Sci USA* **107**: 12975–12979.
- Merkin J, Russell C, Chen P, Burge CB. 2012. Evolutionary Dynamics of Gene and Isoform Regulation in Mammalian Tissues. *Science* **338**: 1593–1599.
- Mount SM, Burks C, Hertz G, Stormo GD, White O, Fields C. 1992. Splicing signals in *Drosophila*: intron size, information content, and consensus sequences. *Nucleic Acids Res* **20**: 4255–4262.
- Nilsen TW, Graveley BR. 2010. Expansion of the eukaryotic proteome by alternative splicing. *Nature* **463**: 457–463.
- Pan Q, Shai O, Lee LJ, Frey BJ, Blencowe BJ. 2008. Deep surveying of alternative splicing complexity in the human transcriptome by high-throughput sequencing. *Nat Genet* **40**: 1413–1415.
- Quinlan AR, Hall IM. 2010. BEDTools: a flexible suite of utilities for comparing genomic features. *Bioinformatics* **26**: 841–842.
- Ranz JM, Namgyal K, Gibson G, Hartl DL. 2004. Anomalies in the expression profile of interspecific hybrids of *Drosophila melanogaster* and *Drosophila simulans*. *Genome Res* **14**: 373–379.
- Rifkin SA, Kim J, White KP. 2003. Evolution of gene expression in the *Drosophila melanogaster* subgroup. *Nat Genet* **33**: 138–144.

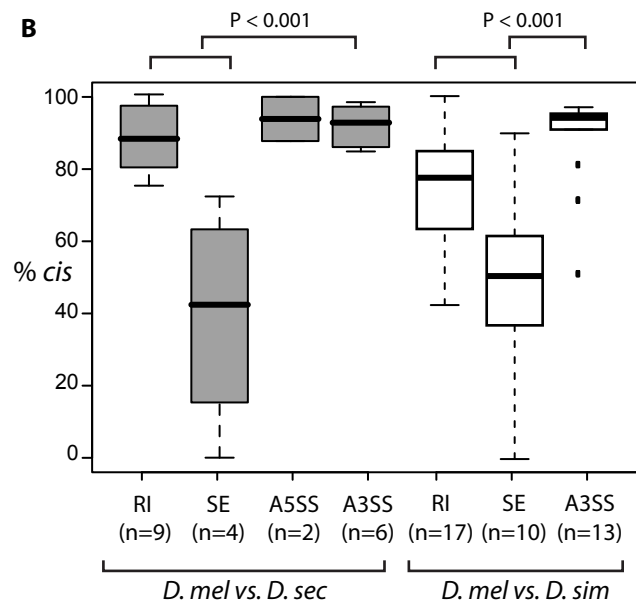
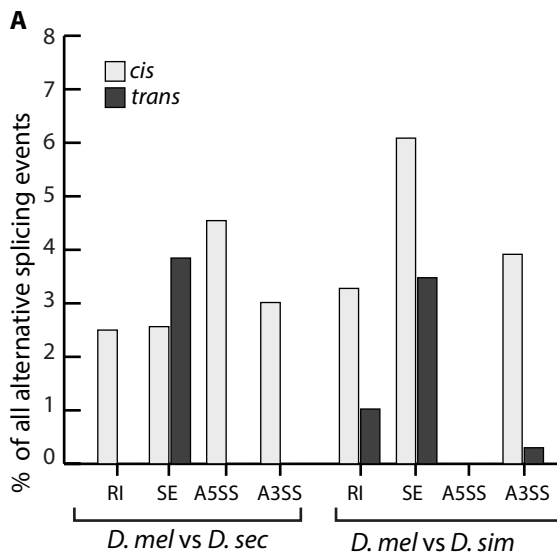
- Sakabe N, de Souza S. 2007. Sequence features responsible for intron retention in human. *BMC Genomics* **8**: 59.
- Sawamura K, Yamamoto MT, Watanabe TK. 1993. Hybrid lethal systems in the *Drosophila melanogaster* species complex. II. The Zygotic hybrid rescue (Zhr) gene of *D. melanogaster*. *Genetics* **133**: 307–313.
- Schneider CA, Rasband WS, Eliceiri KW. 2012. NIH Image to ImageJ: 25 years of image analysis. *Nat Methods* **9**: 671–675.
- Shepard PJ, Choi EA, Busch A, Hertel KJ. 2011. Efficient internal exon recognition depends on near equal contributions from the 3' and 5' splice sites. *Nucleic Acids Res* **39**: 8928–8937.
- Storey JD, Tibshirani R. 2003. Statistical significance for genomewide studies. *Proc Natl Acad Sci USA* **100**: 9440–9445.
- Stevenson KR, Coolon JD, Wittkopp PJ. 2013. Sources of bias in measures of allele-specific expression derived from RNA-seq data aligned to a single reference genome. *BMC Genomics* **14**: 536.
- Taliaferro JM, Alvarez N, Green RE, Blanchette M, Rio DC. 2011. Evolution of a tissue-specific splicing network. *Genes Dev* **25**: 608–620.
- Wang ET, Sandberg R, Luo S, Khrebtkova I, Zhang L, Mayr C, Kingsmore SF, Schroth GP, Burge CB. 2008. Alternative isoform regulation in human tissue transcriptomes. *Nature* **456**: 470–476.
- Wang Z, Burge CB. 2008. Splicing regulation: from a parts list of regulatory elements to an integrated splicing code. *RNA* **14**: 802–813.

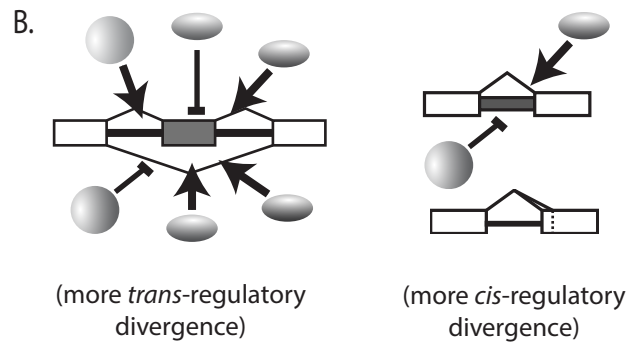
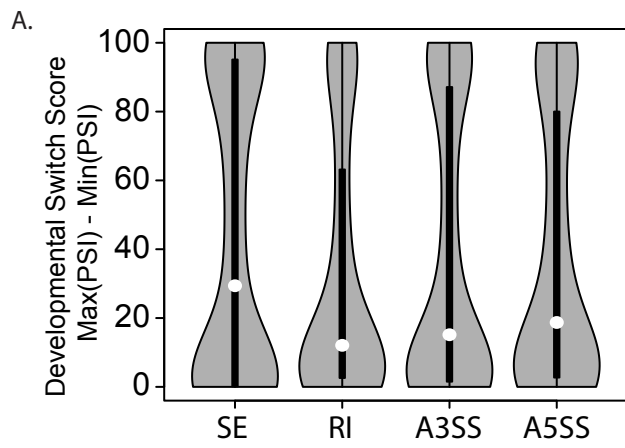
- Wittkopp PJ, Haerum BK, Clark AG. 2004. Evolutionary changes in *cis* and *trans* gene regulation. *Nature* **430**: 85–88.
- Wittkopp PJ, Haerum BK, Clark AG. 2008. *Nature Genet* **40**: 346-50.
- Wu C. 1995. Sexual Isolation in *Drosophila melanogaster*: A Possible Case of Incipient Speciation. *Proc Natl Acad Sci USA* **92**: 2519–2523.
- Yeo G, Burge CB. 2004. Maximum entropy modeling of short sequence motifs with applications to RNA splicing signals. *J Comput Biol* **11**: 377–394.
- Yu Y, Maroney P, Denker J, Zhang X, Dybkov O, Luhrmann R, Jankowsky E, Chasin L, Nilsen T. 2008. Dynamic Regulation of Alternative Splicing by Silencers that Modulate 5' Splice Site Competition. *Cell* **135**: 1224–1236.
- Zerbino DR, Birney E. 2008. Velvet: algorithms for de novo short read assembly using de Bruijn graphs. *Genome Res* **18**: 821–829.











**Table 1. Distribution of divergent splicing events in coding and non-coding regions.**Divergence of alternative splicing events in coding and non-coding regions

Comparison	Divergent events		Fraction divergent		Ratio (Noncoding / Coding)	P-value
	Coding (of 1130)	Noncoding (of 465)	Percent Coding	Percent Noncoding		
Among D. mel	24	14	2.12	3.01	1.42	0.367
D. sim vs D. sec	43	28	3.81	6.02	1.58	0.083
D. mel vs D. sim	75	38	6.64	8.17	1.23	0.337
D. mel vs. D. sec	76	64	6.73	13.76	2.05	7.79E-05

Excluding NAGNAG	Divergent events		Fraction divergent		Ratio (Noncoding / Coding)	P-value
	Coding (of 1021)	Noncoding (of 450)	Percent Coding	Percent Noncoding		
Among D. mel	21	14	2.06	3.11	1.51	0.266
D. sim vs D. sec	36	28	3.53	6.22	1.76	0.038
D. mel vs D. sim	57	37	5.58	8.22	1.47	0.085
D. mel vs. D. sec	59	63	5.78	14.00	2.42	4.28E-06

Divergence of frameshifting vs frame-neutral events

Comparison	Divergent events		Fraction divergent		Ratio (Preserving / Shifting)	P-value
	Frameshifting (of 371)	Frame-preserving	Percent Frameshifting	Percent Frame-preserving		
Among D. mel	14	36	3.77	4.74	1.26	0.540
D. sim vs D. sec	11	32	2.96	4.22	1.42	0.407
D. mel vs D. sim	26	104	7.01	13.70	1.96	0.003
D. mel vs. D. sec	26	100	7.01	13.18	1.88	0.005

Excluding NAGNAG	Divergent events		Fraction divergent		Ratio (Preserving / Shifting)	P-value
	Frameshifting (of 371)	Frame-preserving	Percent Frameshifting	Percent Frame-preserving		
Among D. mel	14	29	3.77	4.46	1.18	0.746
D. sim vs D. sec	11	25	2.96	3.85	1.30	0.597
D. mel vs D. sim	26	95	7.01	14.62	2.09	0.001
D. mel vs. D. sec	26	76	7.01	11.69	1.67	0.030

**Table 2. Comparison of species-specific splice site scores and PSI values**

Type	<i>D. melanogaster</i> vs. <i>D. simulans</i>		<i>D. melanogaster</i> vs. <i>D. sechellia</i>	
	R-squared	P-value	R-squared	P-value
ES	0.001	0.706	0.001	0.678
IR	0.011	0.006	0.010	0.011
AD	0.011	0.392	0.000	0.871
AA	0.059	2.1E-08	0.047	6.1E-07
NAGNAG	0.178	4.6E-06	0.158	1.7E-05
AA- Other	0.030	4.9E-04	0.020	0.004

**Table 3. Relative contributions of *cis*- and *trans*-regulatory changes to divergent alternative splicing**

*D. melanogaster* / *D. simulans* comparison

Alternative Splicing class	Divergent	Percent		Percent <i>cis</i> -		Percent <i>trans</i> -
		Divergent	<i>cis</i> -acting	acting	<i>trans</i> -acting	acting
RI	24	4.92	16	3.28	5	1.02
SE	10	8.70	7	6.09	4	3.48
A5SS	0	0.00	0	0.00	0	0.00
A3SS	30	9.04	13	3.92	1	0.30

*D. melanogaster* / *D. sechellia* comparison

Alternative Splicing class	Divergent	Percent		Percent <i>cis</i> -		Percent <i>trans</i> -
		Divergent	<i>cis</i> -acting	acting	<i>trans</i> -acting	acting
RI	17	4.72	9	2.50	0	0.00
SE	3	3.85	2	2.56	3	3.85
A5SS	3	6.82	2	4.55	0	0.00
A3SS	9	4.52	6	3.02	0	0.00