



## A Multilocus Genotyping Assay for Candidate Markers of Cardiovascular Disease Risk

Suzanne Cheng, Michael A. Grow, Céline Pallaud, et al.

*Genome Res.* 1999 9: 936-949

Access the most recent version at doi:[10.1101/gr.9.10.936](https://doi.org/10.1101/gr.9.10.936)

---

**References** This article cites 95 articles, 33 of which can be accessed free at:  
<http://genome.cshlp.org/content/9/10/936.full.html#ref-list-1>

### License

**Email Alerting Service** Receive free email alerts when new articles cite this article - sign up in the box at the top right corner of the article or [click here](#).

---

An advertisement banner with a teal background. On the left, the text reads "CRISPR and RNAi Genetic Screening. Your new superpower." In the center is a white box with the text "LEARN MORE". On the right is a woman wearing a red and white superhero cape and mask, with the Cellecta logo (a green molecular structure) and the word "CELLECTA" below it.

---

To subscribe to *Genome Research* go to:  
<https://genome.cshlp.org/subscriptions>

---

Cold Spring Harbor Laboratory Press

# A Multilocus Genotyping Assay for Candidate Markers of Cardiovascular Disease Risk

Suzanne Cheng,<sup>1,9</sup> Michael A. Grow,<sup>1</sup> Céline Pallaud,<sup>2</sup> William Klitz,<sup>3</sup> Henry A. Erlich,<sup>1</sup> Sophia Visvikis,<sup>2</sup> John J. Chen,<sup>3,4</sup> Clive R. Pullinger,<sup>5</sup> Mary J. Malloy,<sup>6,7</sup> Gérard Siest,<sup>2</sup> and John P. Kane<sup>6,8</sup>

<sup>1</sup>Department of Human Genetics, Roche Molecular Systems, Inc., Alameda, California 94501 USA; <sup>2</sup>Centre de Médecine Préventive, 54501 Vandoeuvre-lès-Nancy, France; <sup>3</sup>School of Public Health and <sup>4</sup>Department of Integrative Biology, University of California at Berkeley, Berkeley, California 94720 USA; <sup>5</sup>Cardiovascular Research Institute, <sup>6</sup>Department of Medicine, <sup>7</sup>Department of Pediatrics, and <sup>8</sup>Department of Biochemistry and Biophysics, University of California at San Francisco, San Francisco, California 94143 USA

A number of chronic diseases, including cardiovascular disease, appear to have a multifactorial genetic risk component. Consequently, techniques are needed to facilitate evaluation of complex genetic risk factors in large cohorts. We have designed a prototype assay for genotyping a panel of 35 biallelic sites that represent variation within 15 genes from biochemical pathways implicated in the development and progression of cardiovascular disease. Each DNA sample is amplified using two multiplex polymerase chain reactions, and the alleles are genotyped simultaneously using an array of immobilized, sequence-specific oligonucleotide probes. This multilocus assay was applied to two types of cohorts. Population frequencies for the markers were estimated using 496 unrelated individuals from a family-based cohort, and the observed values were consistent with previous reports. Linkage disequilibrium between consecutive pairs of markers within the *apoCIII*, *LPL*, and *ELAM* genes was also estimated. A preliminary analysis of single and pairwise locus associations with severity of atherosclerosis was performed using a composite cohort of 142 individuals for whom quantitative angiography data were available; evaluation of the potentially interesting associations observed will require analysis of an independent and larger cohort. This assay format provides a research tool for studies of multilocus genetic risk factors in large cardiovascular disease cohorts, and for the subsequent development of diagnostic tests.

Multiple genetic and environmental risk factors appear to contribute to common diseases such as cardiovascular disease and cancer. Although specific genetic causes have been identified among certain families with a history of disease, the association of these genes with disease in the general population is not fully understood. One reason is that genetic predisposition to such diseases can result from the cumulative effect of common allelic variants, variants that individually confer only a modest increased risk. Thus, one challenge is to identify the common multilocus profiles that confer a high risk for disease; a second challenge is to understand how environmental factors modulate expression of a genetic predisposition to disease.

A growing number of genetic variants have been implicated in the development of complex diseases. As these candidate genes are identified, there is an increasing need for assays capable of simultaneously genotyping multiple loci. Studies focused on single markers can be used to assign relative risk values, but this approach provides only a limited context for

evaluating genetic risk factors. Studies encompassing multiple markers provide a broader context that is critical to assess information on candidate markers for multifactorial diseases, and multilocus assays can greatly facilitate the necessary genotyping process. Multilocus results can provide insight into mechanisms of disease susceptibility and identify key subsets of predictive markers that are clinically informative. These informative genetic markers can then be used to supplement routine biochemical assays for patient care, for example, in lieu of protein activity or concentration measurements that are difficult to make or show significant intra- and interindividual variability independent of disease state.

In developing a prototype multilocus genotyping assay, we focused on cardiovascular disease (CVD), a leading cause of death worldwide. Monogenic disorders, such as familial hypercholesterolemia and hypertrophic cardiomyopathy (for reviews, see Hobbs et al. 1992; Day et al. 1997; Bonne et al. 1998), have been identified among some families. Established risk factors for disease in the general population include age, gender, diabetes mellitus, obesity, high serum cholesterol levels, and hypertension, as well as cigarette smoking and physical inactivity (Pasternak et al. 1996).

<sup>4</sup>Present address: School of Public Health, St. Louis University, St. Louis, Missouri 63123 USA.

<sup>9</sup>Corresponding author.

E-MAIL [suzanne.cheng@roche.com](mailto:suzanne.cheng@roche.com); FAX (510) 522-1285.

These factors, however, do not explain all premature CVD cases (Hoeg 1997). A number of these established factors have genetic components, and as yet unknown risk factors may be primarily genetic. In addition, recent evidence indicates that genetic factors influence patient responsiveness to therapeutic intervention, both dietary (Humphries et al. 1996) and pharmaceutical (Kuivenhoven et al. 1998).

The "CVD35" assay described here is comprised of 35 biallelic sites within 15 genes representing pathways implicated in the development and progression of atherosclerotic plaques: lipid metabolism, homocysteine metabolism, blood pressure regulation, thrombosis, and leukocyte adhesion (Table 1). The panel includes well-known polymorphisms in the apolipoprotein E (*apoE*; for review, see Mahley 1988) and angiotensinogen (*AGT*; Jeunemaitre et al. 1992) genes, mutations such as *apoB* Gln-3500 (Soria et al. 1989) and factor V Leiden (Bertina et al. 1994), and more recently identified sequence variations in the methylene tetrahydrofolate reductase (*MTHFR*; Frosst et al. 1995; Goyette et al. 1995) and E-selectin (*ELAM*; Wenzel et al. 1996) genes. The CVD35 assay uses pooled polymerase chain reaction (PCR; Mullis and Faloona 1987; Saiki et al. 1988) primer pairs to coamplify 27 targets from genomic DNA in two reactions. Amplified fragments within each PCR product pool are then detected colorimetrically with sequence-specific oligonucleotide probes immobilized in a linear array on nylon membranes (Saiki et al. 1989). Probe sequences have been optimized carefully to permit genotyping of all sites under a single assay condition. Therefore, large cohorts can be typed rapidly at all 35 sites, providing an extended database for evaluating the disease association of these markers, and a multilocus context for evaluating new candidate markers. We have applied this multilocus assay to a population-based cohort to estimate allele frequencies and intragenic haplotypes, and to a lipid clinic-based cohort to model a case-control study.

## RESULTS

### CVD35 Assay

A three-primer, two-probe system for *apoE* was used as the basis for the CVD35 assay; the specificity of this system has been described previously (Cheng et al. 1998). No Arg-112/Cys-158 alleles were detected among any of the 1400 control or cohort samples genotyped, consistent with previous studies of the *apoE* gene (Houlston et al. 1989). In future versions of this assay, the allele-specific primers for codon 112 will be replaced by probes to simplify genotyping of the *apoE* marker (data not shown).

The PCR products range from 95 to 535 bp in size. As shown in Figure 1, nearly all of the PCR products in

each of the final multiplexes (14 in multiplex A, 13 in multiplex B) could be clearly distinguished by gel electrophoresis. Although the largest product bands appeared relatively weak in fluorescence intensity, these yields were sufficient for detection by the immobilized probes.

Detection of the amplified alleles is illustrated in Figure 2, as well as the specificity of the probe panel; for example, the results distinguish each of the three possible genotypes at *LPL*(-93) (Fig. 2A: strips three to five), *PON1*92 (Fig. 2A: strips one to three), *AGT*235 (Fig. 2B: strips one to three), and *factor V* 506 (Fig. 2B: strips one, two, and four). Figure 2C shows the third strip (strip B2) for two different individuals; of the ~720 unrelated individuals genotyped from all sources, only one variant allele was detected among these four candidate markers (data not shown).

Samples representing a subset of 303 families from the Stanislas cohort (Siest et al. 1998) were used to assess the performance of the CVD35 assay in a large-scale genotyping effort. Eight families were excluded from the haplotype analysis because of inconsistencies of genotypes between parents and offspring, although the unrelated parents were included in the analysis of allele frequencies. In addition, four samples were omitted as a result of weak second allele signals for several markers. Because the assay was designed to yield comparable signals for both alleles in heterozygotes, these weak signals may have resulted from sample contamination. When available, all questionable samples will be retyped using new DNA preparations. A total of 1190 samples were used for subsequent analyses of the allele frequencies for all markers and haplotypes within the *apoCIII*, *ELAM*, and *LPL* genes.

Genotyping data for *apoE*, *ACE*, and *LPL447*, which had been obtained previously through independent methods, were used to evaluate the accuracy of the CVD35 assay for these three markers. No discordant results were noted for *LPL447*; those few samples yielding discordant genotype results for *apoE* and *ACE* were investigated further. For *apoE*, detection of the *e4* allele by the CVD35 assay was problematic if insufficient template DNA was used for amplification; this difficulty should be corrected in future versions of the assay that no longer rely on codon 112-specific primers (data not shown). Three initially discordant results were traced to the specific aliquots tested.

For the *ACE I/D* marker, one *D* allele and two *I* alleles that had been identified by capillary electrophoresis were not detected by the CVD35 assay. This particular *ACE-D* allele was detectable if an alternative primer pair was used, suggesting the presence of a novel sequence variation within the default priming sites. One of the undetected *ACE-I* alleles was also amplifiable with an alternative upstream primer, although with poor efficiency, and gel electrophoresis

**Table 1.** Targets Genotyped by the CVD35 Assay**Gene polymorphism: Reported implication, GenBank accession no., and references****Lipid metabolism**

- apolipoprotein B (*apoB*) on chr. 2p: component of plasma lipoproteins, particularly LDL; mediates binding to LDL receptor  
 Thr 71-Ile: possibly associated with increased plasma LDL cholesterol and apoB levels; Arg-3531-cys LDL receptor binding defect appears to segregate with Thr allele  
 HUMAPB03 (M19810); (Young and Hubl 1989; Pullinger et al. 1995)  
 Arg-3500-Gln mutation: disorder of hypercholesterolemia known as familial defective *apoB*-100, due to reduced binding to LDL receptor  
 HSLDL100 (X04506); (Soria et al. 1989; Humphries and Talmud 1995; Pullinger et al. 1995)
- apolipoprotein CIII (*apoCIII*) on chr. 11q: component of plasma lipoproteins  
 T(-625)del, C(-482)T, T(-455)C: increased plasma triglyceride levels  
 HUMAPOCP (M60674), HSAPC3A (X01392); (Dammerman et al. 1993)  
 C3175G (*Sst*I): increased plasma triglyceride levels  
 HSAPC3A (X01392); (Rees et al. 1985; Ordovas et al. 1991)  
 C1100T, T3206G: increased plasma triglyceride levels  
 HSAPC3A (X01392); (Xu et al. 1994)
- apolipoprotein E (*apoE*) on chr. 19q: component of plasma lipoproteins; mediates binding to the LDL and remnant (*apoE*) receptors  
 e3/e2, e4: interindividual variation in plasma total and LDL cholesterol levels, atherosclerotic progression  
 HUMAPOE4 (M10065); (Mahley 1988; Hixson and Pathobiological Determinants of Atherosclerosis in Youth (PDA) Research Group 1991; de Knijff et al. 1994)
- cholesteryl ester transfer protein (*CETP*) on chr. 16q: reverse cholesterol transport pathway; possible proatherogenic role in presence of dyslipidemia (Tall 1995; Lassel et al. 1998)  
 Ile-405-Val: increased plasma HDL cholesterol and apoA-I levels  
 HUMCETP6 (M32997); Agellon et al. 1990; Funke et al. 1994; Gudnason et al. 1997)  
 Asp-442-Gly: increased HDL cholesterol levels, yet also disease risk  
 HUMCETP7 (M32998); (Takahashi et al. 1993; Zhong et al. 1996)
- lipoprotein lipase (*LPL*) on chr. 8p: hydrolysis of plasma triglycerides  
 T(-93)G: increased LPL promoter activity, reduced plasma triglycerides  
 HUMLPLA (M29549); (Yang et al. 1995a,b; Ehrenborg et al. 1997; Hall et al. 1997)  
 T(-39)C: reduced LPL promoter activity  
 HUMLPLA (M29549); (Yang et al. 1995a,b)  
 Asp9-Asn: increased plasma triglycerides, increased atherosclerotic progression  
 HUMLPL (M15856); (Oka et al. 1990; Maily et al. 1995; Jukema et al. 1996)  
 Asn-291-Ser: reduced plasma HDL cholesterol, increased triglyceride levels  
 HUMLPL (M15856); (Oka et al. 1990; Reymer et al. 1995; Zhang et al. 1995)  
 Ser-447-Ter: increased plasma HDL cholesterol, reduced plasma triglyceride levels; possible impact on responsiveness to  $\beta$ -blockers  
 HUMLPLF1 (M76722); (Hata et al. 1990; Groenemeijer et al. 1997; Kuivenhoven et al. 1997)
- paraoxonase (*PON*) on chr. 7q: HDL-associated enzyme known to hydrolyze organophosphate poisons; possible contribution to HDL's protective capacity against LDL oxidation  
 Gln-192-Arg: increased enzymatic activity; in vitro, reduced protection against lipid peroxidation  
 HUMPONA (M63012); (Humbert et al. 1993; Hegele et al. 1995; Serrato and Marian 1995; Mackness et al. 1997; Sanghera et al. 1997)

**Renin-angiotensin system**

- angiotensin-converting enzyme (*ACE*) on chr. 17q: proteolyzes angiotensin I to produce angiotensin II  
*Alu* element insertion/deletion in intron 16: increased plasma ACE levels; mixed evidence of association with myocardial infarction  
 HSATICE (X62855), HUMAICEB (J04144); (Cambien et al. 1992; Rigat et al. 1992; Evans et al. 1994; Lindpaintner et al. 1995; Ludwig et al. 1995)
- angiotensin II receptor type 1 (*AT1R*,) on chr. 3q: one of two receptors for angiotensin II, particularly in vascular smooth muscle cells  
 A1166C: hypertension; possible synergism with ACE conferring risk of myocardial infarction HSANTENII (Z11162); (Bonnardeaux et al. 1994; Tiret et al. 1994)
- angiotensinogen (*AGT*) on chr. 1q: substrate for renin, yielding angiotensin I  
 Met-235-Thr: increased plasma AGT levels; hypertension  
 HUMAGT02 (M24686); (Jeunemaitre et al. 1992; Morgan et al. 1996)

**Homocysteine metabolism**

- cystathionine  $\beta$ -synthase (*CBS*) on chr. 21q: transulfuration pathway, converting homocysteine to cystathionine, with pyridoxine as cofactor  
 Ala-114-Val: pyridoxine-responsive homocystinuria  
 HUMCYSTATH (L19501); (Kozich et al. 1993)  
 Arg-125-Gln, glu131 asp: pyridoxine-unresponsive homocystinuria  
 HUMCYSTATH (L19501); (Marble et al. 1994)  
 Ile-278-Thr: pyridoxine-responsive homocystinuria  
 HUMCYSTATH (L19501); (Kozich and Kraus 1992; Hu et al. 1993)  
 68-bp insertion: linkage disequilibrium with 278thr; (Sebastio et al. 1995; Sperandeo et al. 1996; Tsai et al. 1996)  
 Gly-307-Ser: pyridoxine-unresponsive homocystinuria  
 HUMCYSTATH (L19501); (Hu et al. 1993)

**Table 1.** (Continued)**Gene polymorphism: Reported implication, GenBank accession no., and references**

methylene tetrahydrofolate reductase (*MTHFR*) on chr. 1p: remethylation pathway, generating the 5-methyltetrahydrofolate that serves as the methyl group donor

C677T (Ala/Val) increased thermolability; associated with hyperhomocysteinemia given low dietary folate; increased risk for deep-vein thrombosis in carriers of factor V Leiden HSU09806 (U09806); (Frosst et al. 1995; Goyette et al. 1995; Kluijtmans et al. 1996; Cattaneo et al. 1997; Christensen et al. 1997)

C692T: absence of enzyme activity  
HSU09806 (U09806); (Goyette et al. 1995)

**Thrombosis**

glycoprotein IIIa (*GP1IIa*) on chr. 17q: component of GPIIb/IIIa platelet adhesion receptor, binding fibrinogen, fibronectin, and von Willebrand factor; (Nurden 1996)

Leu-33-Pro: interindividual variation in platelet adhesion and/or adhesion; mixed evidence of association with risk of coronary thrombosis

HUMGPP3A07 (M32672); (Newman et al. 1989; Jin et al. 1993; Weiss et al. 1996; Ridker et al. 1997)

*fibrinogen* on chr. 4q: determinant of plasma viscosity, cofactor for platelet aggregation, precursor of fibrin (component of plaques); (Cook and Ubben 1990; Mannucci 1995)

$\beta$  chain G(-455)A: increased plasma fibrinogen levels and progression of atherosclerosis

HSFIBBR1 (X05018); (Green et al. 1993; Humphries et al. 1995; Humphries et al. 1997)

*factor V* on chr. 1q: activated form is procoagulant cofactor in prothrombin activation, inactivated through cleavage by activated protein C

Arg-506-Gln (Leiden mutation): resistance to activated protein C; hypercoagulability

HUMF510 (L32764); (Bertina et al. 1994; Ridker et al. 1995; Kalafatis and Mann 1997)

**Leukocyte adhesion**

endothelial leukocyte adhesion molecule-1 (*ELAM*) on chr. 1q: adhesion of leukocytes to activated arterial endothelium (Carlos and Harlan 1990); also known as *E-selectin*

G98T, Ser-128-Arg, Leu-554-Phe: increased risk for severe atherosclerosis

HUMELAM1 (M61895), HUMELAM3 (M61888), HUMELAM7 (M61892); (Wenzel et al. 1994; 1996)

Markers are grouped by gene within broad categories based upon biological function. Chromosomal locations of each gene are given; among these genes, no two are known to be in strong linkage disequilibrium. For each target, with wild-type or most frequent allele is listed to the left, and the variant to the right, of the numerical nucleotide or codon position. Single letters indicate nucleotide variations; three-letter codes designate amino acid variations. For each target, a possible role for the variant allele, the GenBank sequence used for primer and probe selection, and references for the sequence variations are listed. Review articles are cited in the interest of space.

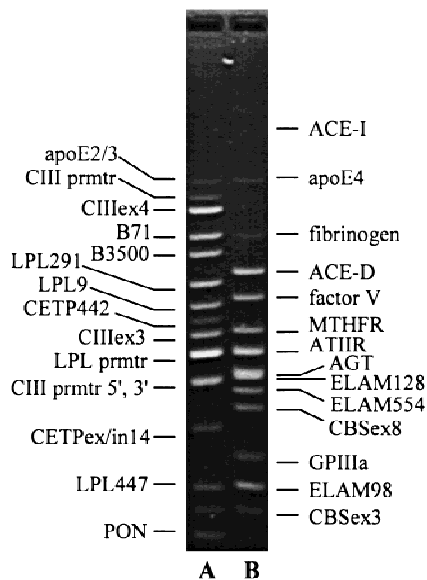
revealed a truncated insertion of ~50 bp in size (data not shown); this *ACE-I* allele had been detected previously based on the 3' insertion junction sequence. The second undetected *ACE-I* allele was identified correctly after single-target amplification with the original primer pair, or using a multiplex amplification with an alternative *ACE-I*-specific primer spanning the 3' insertion junction, as in Evans et al. (1994; data not shown). Failure of the CVD35 assay to amplify the full-length *Alu* element from a wild-type sequence in a multiplex reaction appeared to be unique to this sample. With the 3' junction-specific primer, the *ACE-I* target was reduced from 533 to 155 bp; this primer was used to confirm all *D/D* genotypes within the UCSF cohort (data not shown). Use of the *ACE-I*-specific primer spanning the 3' insertion junction in future assays should address these few difficulties.

**Allele Frequencies**

No variant alleles were observed within either cohort for 6 of the 35 sites: *LPL* nucleotide (-39); *CETP* codon 442; *CBS* codons 125, 131, and 307; and *MTHFR* nucleotide 692. Within the Stanislas cohort, a single *CBS* Val-114 allele and no *apoB* codon Gln-3500 alleles

were detected. The genotypes of 496 unrelated parents from this group were used to estimate population frequencies for each of the remaining 28 markers; these data (Table 2) extend the previous report based on 455 individuals (Cheng et al. 1998). The observed frequencies are consistent with previous reports for caucasian populations (as cited in Table 2). Four markers (*CBS* Ile/Thr-278, *CBS* del/ins, *ELAM* 98, and *ELAM* 128) appeared to differ ( $\chi^2 > 3.84$ ) from expectations based on Hardy-Weinberg equilibrium, and complete concordance in genotypes between the two *CBS* markers and between the two *ELAM* markers was also noted. This may be type I error, given the number of loci tested; in general, the observed allele frequencies did predict the observed genotype frequencies.

Within the UCSF cohort of 142 individuals, no variant *CBS* Val-114 alleles were observed. Four carriers of the *apoB* Gln-3500 mutation were noted within this clinic-based cohort, in contrast to the population-based Stanislas cohort. One carrier of the *CBS* Thr-278 allele without the 68-bp insertion was also detected; this genotype was confirmed by sequencing (data not shown). One sample initially yielded a null result for the *ACE* target, but subsequently was assigned the *I/I*



**Figure 1** Agarose gel image illustrating the PCR product pool resulting from coamplification of multiple loci in the CVD35 research assay. The molecular weight standard is *Hae*III-digested  $\Phi$ X174. The PCR products in lane A (multiplex A) range from 95 to 395 bp; those in lane B (multiplex B) range from 105 to 535 bp. Not all of the PCR products are clearly visible, and one low molecular weight nontarget band is visible in lane A.

genotype with use of the insertion-junction-specific primer. All *ACE D/D* genotypes were confirmed by reanalysis with the junction-specific primer (data not shown). Allele frequencies are given in Table 2. One

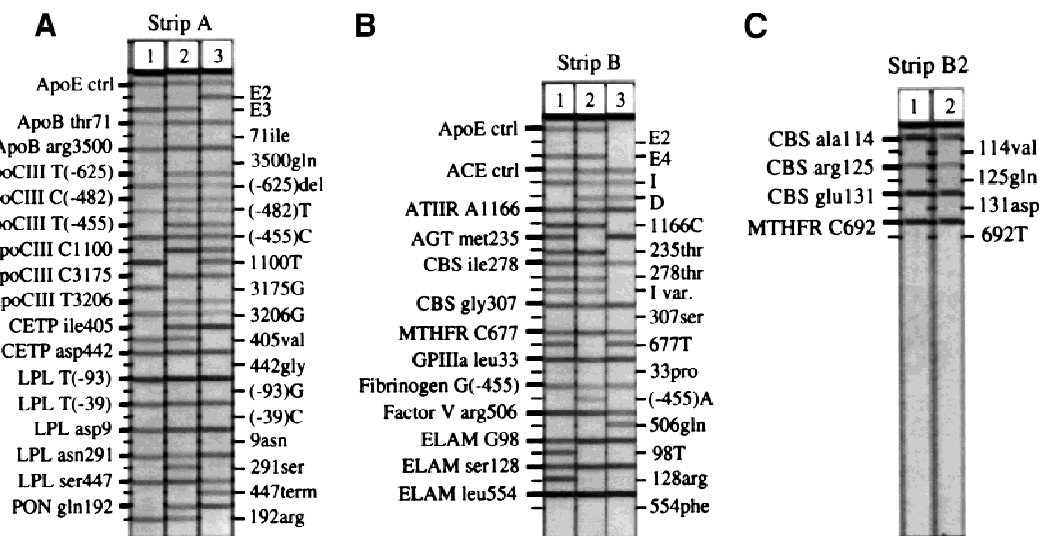
marker (*ELAM554*) appeared to differ ( $\chi^2 = 4.14$ ) from expectations based on Hardy–Weinberg equilibrium, but given the small sample size and number of loci, this may reflect type I error; in general, the observed allele frequencies predicted the observed genotype frequencies.

### Linkage Disequilibrium

Using 1100 chromosomes from 275 families, three loci were examined for haplotypes defined by multiple sites typed within each gene: *ELAM* (three sites), *LPL* (four sites), and *apoCIII* (six sites). Linkage disequilibrium estimates between proximal marker sites are presented in Figure 3; the haplotype data will be explored in greater detail elsewhere (W. Klitz et al., in prep.). Allele frequencies among this subset of the Stanislas cohort were comparable to those listed in Table 2.

Maximum disequilibrium ( $D' = 1.0$ ) was observed among the three sites genotyped within the *ELAM* gene. The lower statistical significance associated with codon 554 was due to the low frequency of the Phe-554 allele. Codon Phe-554 was observed only on chromosomes carrying the G98 and Ser-128 alleles. Although complete concordance in genotypes between the *ELAM* 98 and 128 sites was noted in this study, chromosomes bearing only one of the two variants have been reported (Wenzel et al. 1996).

Maximum linkage disequilibrium was also observed between the *LPL* promoter site (–93) and codon 9. Three chromosomes were observed with the (–93)G



**Figure 2** Representative probe strips demonstrating the identification of different alleles. Genomic DNA samples were amplified with either the multiplex A (A) or the multiplex B (B,C) primer pool, then hybridized to the corresponding immobilized probe strips, as described under Methods. Five examples each of probe strips A and B are shown; only two examples of probe strip B2 are shown. For the purpose of illustrating a range of different genotypes, the individuals typed here in A do not correspond to those in B or C. On each vertical strip, alleles amplified from the original sample are indicated by horizontal lines. The template guides at the left and right identify the allele detected at each probe position. With the exception of *apoE3*, *ACE-I*, and *ACE-D*, the less prevalent genetic variant for each marker is listed on the right. Differences in the relative efficiencies of amplification and probe hybridization contribute to the variation in the actual intensity among the loci. (In actual size, each strip is ~8 cm long.)

**Table 2.** Allele Frequencies (pA, pa) Observed among Unrelated Individuals within the Population-Based Stanislas Cohort

Gene	Allele (A/a)	Stanislas (2n = 992)	UCSF (2n = 284)	Literature comparison	
<i>apoE</i>	<i>e3/e2,4</i>	p2	p2	p2	
		0.101	0.060	0.08	
		p4	p4	p4	
		0.130	0.183	0.15	
<i>apoB</i>	Thr-71/Ile	pa	pa	pa	
		0.307	0.324	0.36	
<i>apoCIII</i>	Arg-3500/Gln	0	0.014	0.0015	
	(-625) T/del	0.383	0.384	0.42	
	(-482) C/T	0.257	0.261	0.24	
	(-455) T/C	0.370	0.380	0.42	
	1100 C/T	0.247	0.317	0.21	
	3175 C/G	0.080	0.116	0.07	
	3206 T/G	0.352	0.444	0.35	
	<i>CETP</i>	Ile-405/Val	0.312	0.338	0.31
	<i>LPL</i>	(-93) T/G	0.020	0.035	0.02
		Asp-9/Asn	0.019	0.035	0.02
Asn-291/Ser		0.015	0.011	0.02	
	Ser-447/term	0.121	0.102	0.17	
<i>PON</i>	Gln-192/Arg	0.274	0.324	0.31	
<i>ACE</i>	intron 16 I/D	0.534	0.511	0.54	
<i>ATIIR1</i>	1166 A/C	0.300	0.303	0.29	
<i>AGT</i>	Met-235/Thr	0.403	0.412	0.36	
<i>CBS</i>	Ile-278/Thr	0.084	0.113	0.06	
	68-bp I	0.084	0.109	0.06	
	Ala-114/Val	0.001	0.000	<0.1	
<i>MTHFR</i>	677 C/T	0.384	0.352	0.38	
<i>GP1IIa</i>	Leu-33/Pro	0.157	0.141	0.10	
<i>figrinogen</i>	(-455) G/A	0.199	0.229	0.22	
<i>factor V</i>	Arg-506/Gln	0.026	0.014	0.03	
<i>ELAM</i>	98 G/T	0.087	0.099	0.11	
	Ser-128/Arg	0.087	0.099	0.09	
	Leu-554/Phe	0.048	0.035	0.02	

For *apoE*, p2 is the observed frequency of the *e2* allele and p4 is the observed frequency of the *e4* allele; the *e3* allele frequency is not shown explicitly. For each biallelic marker, except for *ACE*, the alleles are written in the order of most frequent (allele A)/least frequent (allele a). For *ACE*, the risk-associated D allele was designated the variant allele (a). Markers for which no variant alleles were detected are not listed [*CETP442*, *LPL(-39)*, *CBS125*, *CBS131*, *CBS307*, and *MTHFR692*]. Representative allele frequencies reported previously are cited for comparison. Allele frequencies are also given for the smaller UCSF Cohort. Although the significance of comparing these values with those of the Stanislas Cohort is limited by the sample sizes, the lipid clinic-based UCSF Cohort showed an overall trend of increased frequencies for lipid metabolism-related alleles that have been implicated in disease.

(less frequent allele) and Asp-9 (more frequent allele) haplotype; all others were concordant in genotype between the two sites. Codons 291 and 447 appeared to be in modest linkage disequilibrium, although statistical significance was not achieved due to the low frequency of the Ser-291 allele (0.016). The strong disequilibrium between promoter site (-93) and codon 9 among caucasians has been reported previously (Hall et al. 1997). The suggestion of greater recombination rates upstream of codon 291 and between codons 291 and 447 (exons 6 and 9), as inferred from the linkage disequilibrium results, is consistent with recently reported data (Clark et al. 1998; Nickerson et al. 1998).

For the *apoCIII* gene, linkage disequilibrium was greatest within the promoter and exon 4 (markers 3175, 3206), regions with marker sites separated by fewer than 150 bp. Within the promoter, interestingly, linkage disequilibrium was not maximal between the

(-482) and (-455) sites, separated by only 27 bp. Disequilibrium was low between the promoter region and site 1100, which are separated by 1.5 kb, yet strong disequilibrium was observed between sites 1100 and 3175 (exons 3 and 4), a 2-kb separation. The relatively infrequent 3175-G variant did appear to be in strong disequilibrium with the promoter variants (data not shown), as had been reported previously (Dammerman et al. 1993). Strong linkage disequilibrium between sites 1100 and 3206 has also been previously noted (Xu et al. 1994).

Although the likelihood of detecting association with disease is expected to be greatest with allelic variants of demonstrated functional significance, this information may not be readily available. In the absence of clear evidence as to the most functionally significant variations within a single gene, linkage disequilibrium data assist in determining the most informative sites to

genotype for disease association studies. Redundant sites may then be replaced by new candidate markers. Linkage disequilibrium data may also lead to hypotheses tracing the evolution of haplotypes that may be associated with disease.

### Disease Association

The variant allele frequencies observed within the lipid clinic-based UCSF cohort are listed alongside those of the population-based Stanislas cohort in Table 2. Although the Stanislas and UCSF cohorts were not specifically matched for population substructure, higher frequencies of *apoE e2* and *e4*, *apoB* Gln-3500, and *apoCIII* 1100T and 3206G alleles ( $P < 0.05$ ) were observed within the clinic-based UCSF cohort, consistent with previous reports associating these variants with elevated lipid levels; none of the nonlipid-related markers showed a nominally significant difference in frequencies between the two cohorts. The overall trend of increased frequencies for reportedly disease-associated alleles that was observed in the UCSF cohort might be expected among these individuals who are at higher risk for coronary events than the general population.

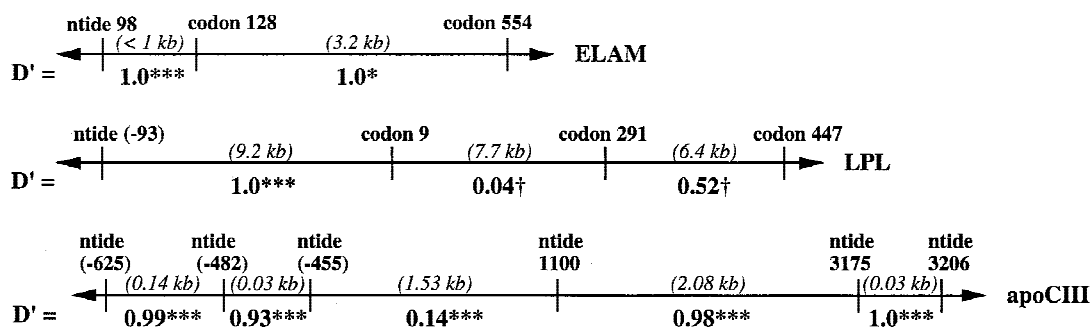
The UCSF cohort was comprised of 142 unrelated caucasians for whom angiograms had been quantitated and scored by the Gensini method (Gensini 1975). These scores were used to subdivide the cohort into quintiles that represented differing severities of coronary arterial occlusion. No significant deviations from Hardy-Weinberg equilibrium were noted within these quintiles (data not shown). The Gensini-based quintiles did not show significant correlation with total, low-density lipoprotein (LDL), or high-density lipoprotein (HDL) cholesterol levels, although there was an unexpected, suggestive trend toward lower average very low-density lipoprotein (VLDL)-triglyceride (TG) and VLDL-cholesterol levels with increasing Gensini score (data not shown).

Disease association with the allelic variants of 15

markers was explored among female-only (FQ1 vs. FQ5) and the combined gender (Q1 vs. Q5) quintiles, as described under Methods. Although the small size of this UCSF cohort limited the statistical power to detect one- and two-locus effects on risk for CVD, the intent of this analysis was to demonstrate how the CVD35 assay could be used to evaluate disease association and genotype interactions with a case-control study design. Given the exploratory nature of these preliminary analyses, no formal statistical correction for multiple testing was applied.

The markers were first considered individually for association with disease. The test for *apoB* codon 71 among women yielded a nominally significant difference in frequency between the extreme Gensini quintiles (12 carriers of the Ile-71 allele among 20 individuals in FQ1, 4 carriers among 18 in FQ5; uncorrected, two-tailed  $P < 0.03$ ). These results are potentially interesting, but no conclusions can be drawn in light of the small sample size available. Previous evidence for association of the *apoB* Ile-71 site with plasma lipoprotein levels has been mixed (Young et al. 1987; Tikkanen et al. 1988).

Multilocus data are of particular value in enabling evaluation of combinations of markers for their association to complex disease. Although only large effects would be expected to yield statistically significant results with this limited sample size, we sought to explore this opportunity by considering two-locus effects. As shown in Table 3, analysis for two-locus effects within the UCSF cohort yielded 14 pairs of variant alleles that showed nominally significant associations (uncorrected  $P < 0.05$ ) with angiographic scores in the combined gender or female-only quintile comparisons. One marker pair, *GPIIIa* Pro-33 with *ATIIIR* 1166C, yielded a possibly predisposing association in both the combined gender and female-only quintile comparisons; the small cohort size did not permit direct evaluation of the role of gender. This preliminary study did suggest a number of potentially interesting two-locus



**Figure 3** Linkage disequilibrium values ( $D'$ ) estimated from the intragenic haplotypes for the *ELAM*, *LPL*, and *apoCIII* genes that were observed among 275 families from the Stanislas cohort. Above each gene represented by a horizontal line, the genotyped sites are labeled by nucleotide (ntide) or codon position. Distances between adjacent sites are given in kilobases; the spacing is not to scale. (†)  $P > 0.1$ ; (\*)  $P < 0.05$ ; (\*\*\*)  $P < 0.001$ .

**Table 3.** Pairs of Variant Alleles Observed to Have Suggestively Significant Association with the Severity of Atherosclerosis as Represented by Gensini Scores

Marker 1 (background)	Marker 2 (additional variant)	Q1 vs Q5	
		combined gender	females only
<i>apoE</i> (3/4, 4/4)	CBS278thr/68-bp I	▲*	—
<i>apoCIII</i> (–625)del or <i>apoCIII</i> (–455)C	<i>apoB</i> Ile-71	—	▼*
<i>apoCIII</i> 3206G	<i>apoB</i> Ile-71	—	▼*
PON 192arg	<i>apoB</i> Ile-71	—	▼*
PON 192arg	ACE (I/D, D/D)	▲*	—
ACE (I/D, D/D)	<i>apoB</i> Ile-71	—	▼**
ATIIR 1166C	AGT Thr-235	—	▲*
ATIIR 1166C	CBS Thr278/68-bp I	—	▼*
AGT 235thr	<i>apoB</i> Ile-71	—	▼**
AGT 235thr	ATIIR 1166C	—	▲*
CBS 278thr/68-bp I	<i>apoCIII</i> (–625)del or <i>apoCIII</i> (–455)C	—	▲*
CBS 278thr/68-bp I	<i>apoCIII</i> (–428T)C	—	▲*
GP1IIa 33pro	ATIIR 1166C	▲*	▲*
fibrinogen (–455)A	<i>apoB</i> Ile-71	—	▼*
	▲ Predisposing:	3	5
	▼ Protective:	0	7

For each pair listed, the odds ratio corresponds to the risk associated with carrying a second variant allele (relative to the more frequent allele of Marker 2) within the set of individuals who carried a first variant allele (the background marker). A total of 15 markers were analyzed in this pairwise manner. Both combined-gender and female-only quintiles were evaluated, as described in Methods. (\*\*)  $P < 0.01$ ; (\*)  $0.001 \leq P < 0.05$ ; (—)  $P > 0.05$ .

effects, such as increased risk for disease associated with having two hypertension gene variants, *ATIIR1* 1166C and *AGT* Thr-235. A particularly high relative risk was estimated if *CBS* Thr-278 (associated with hyperhomocysteinemia; Hu et al. 1993) was paired with either *apoE e4* or *apoCIII* promoter variants (associated with hypertriglyceridemia; Dammerman et al. 1993). In contrast, when this *CBS* variant was paired with *ATIIR1* 1166C (hypertension pathway; Bonnardeaux et al. 1994), the effect appeared to be protective. Overall, the number of nominally significant (uncorrected  $P < 0.05$ ) marker pairs just exceeded expectations given a type I error rate of 5%. Analysis of larger cohorts would provide the necessary power to detect true effects of clinical relevance, leading to hypotheses that could be tested subsequently in independent cohorts.

## DISCUSSION

With this immobilized probe assay format, large cohorts can be assayed rapidly for multiple biallelic sites, providing the necessary epidemiological data for evaluation of these markers in association with disease or therapeutic response. An additional advantage of this technology is the relative ease with which the panel of targets can be modified to include new markers of interest. The assay described here is currently being expanded to type >60 sites in 36 genes, and could be expanded even further. One limitation of this approach is that sequence-specific probes will not identify new mutations or polymorphisms; only those new

sequence variations resulting in unusually weak signal intensities would be detected. Furthermore, this format does not detect variable number tandem repeat polymorphisms, and higher density probe arrays are more appropriate for detection of specific mutations in genes such as the LDL receptor gene, for which >600 mutations, including large deletions, have been reported (University College of London 1999). Our multilocus assay can be adopted more readily by individual laboratories, however, particularly for candidate gene evaluations similar to those described here, as compared with genome-wide scanning efforts using high-density arrays. The use of minisequencing on primer arrays with  $^{33}\text{P}$  incorporation to simultaneously genotype 12 variable sites was reported recently (Pastinen et al. 1998); this approach is also promising for rapid analysis of large cohorts.

With larger cohorts, multiple regression or logistic regression methods have greater power to identify those combinations of genotypes that are most clinically informative with regard to disease phenotypes and endpoints. Alternative analytical approaches for multilocus genotype data sets may also reveal interesting associations. Extensive ( $n > 10,000$ ) epidemiological and intervention studies such as the Framingham Heart Study (Dawber et al. 1951), Women's Health Initiative (The Women's Health Initiative Study Group 1998), and Multiple Risk Factor Intervention Trial (The MRFIT Research Group 1982) may offer the greatest power to detect multilocus risk factors, but smaller co-

horts of carefully characterized individuals should also be informative for factors having significant impact on disease. Even with relatively large cohorts, direct evaluation of disease risk associated with combinations of four or more genotypes may be difficult, and inferences may need to be drawn from analyses of smaller subsets of markers. As increasing numbers of markers are analyzed, the issue of multiple testing must also be addressed to provide appropriate statistical interpretation of the results. This issue arises whether samples are genotyped using a multilocus assay, as described here, or through a series of single-locus studies.

Understanding the molecular basis of genetic predisposition to common multifactorial diseases such as cardiovascular disease will depend on the joint efforts of those performing genome-wide scans to identify candidate loci in regions detected through linkage studies and those studying specific mutations and polymorphisms through association studies. Functional studies will also be critical to identify the genetic variations contributing to disease development. The assay described here was designed to provide multilocus genotype information for CVD, but this format can be applied to other diseases such as asthma, bipolar disorder, and osteoporosis. Given the complexity of these diseases, well-defined cases and phenotypes will be essential components of studies seeking to provide insight into disease development from the complex genetic data. Genotype data can then guide the development of algorithms incorporating genetic contributions to calculate aggregate scores of risk, expanding on the approach developed by the Framingham Heart Study investigators for coronary heart disease (Wilson et al.), for example. Clinically informative subsets of these research markers may then form the basis of panels for diagnostic or prognostic use in patient care.

## METHODS

### Primers

The sites targeted for PCR amplification are listed in Table 1. Primers were synthesized with 5' biotinylation using the cyanoethoxyphosphoramidite method (1- $\mu$ mole scale) on an Applied Biosystems 394 DNA Synthesizer (Perkin-Elmer, Foster City, CA). The use of allele-specific primers at codon 112 combined with probes for codon 158 to genotype *apoE* alleles has been described (Cheng et al. 1998). Primers for the *CBS* exon 8, *factor V* Leiden, and *MTHFR* targets were published previously (Hu et al. 1993; Goyette et al. 1995; Ridker et al. 1995); the forward primer for *CBS* exon 8 was later relocated further upstream, to eliminate duplication of the 68-bp insertion sequence (Tsai et al. 1996). The remaining primer sequences were selected with the assistance of two software packages, Oligo (v. 5.0, National Biosciences, Plymouth, MN) and Amplify (v. 1.2, W. Engels, University of Wisconsin, Madison).

Two PCR pools were developed: Multiplex A consisted of 14 biotinylated primer pairs designed to amplify the *e2* and *e3* alleles of *apoE*, and targets within the *apoB*, *apoCIII*, *CETP*,

*LPL*, and *PON* genes. Multiplex B consisted of 13 biotinylated primer pairs designed to amplify the *e4* allele of *apoE*, and targets within the *ACE*, *ATIIR1*, *AGT*, *CBS*, *MTHFR*, *GPIIIa*, *fibrinogen*, *factor V*, and *ELAM* genes. To the extent possible, PCR targets were chosen to be within the 100- to 400-bp size range and to permit resolution of all products by agarose gel electrophoresis. Gel analysis was then used to guide the optimization of PCR conditions. Primer concentrations were adjusted for generally comparable yields of all targets, and ranged from 0.04 to 0.75  $\mu$ M.

As others have reported (Houlston et al. 1989; Hixson and Vernier 1990), amplification of the *apoE* region, which is relatively high in GC-bp content, was most efficient in the presence of DMSO. Even in the presence of DMSO, however, the *apoCIII* promoter target was amplified most effectively if divided into two separate amplicons of 163 and 165 bp.

Unexpectedly weak probe signal intensities necessitated primer redesign for the *AGT* and *GPIIIa* targets. Reducing the size of each amplicon resulted in much stronger probe intensities, suggesting the possibility that the longer amplicons were able to form stable secondary structures that inhibited probe binding (data not shown). The *AGT* target was reduced from 360 to 171 bp; the *GPIIIa* target was reduced from 312 to 131 bp.

### Oligonucleotide Probes

Two probes were designed for each biallelic site, to detect and distinguish between the variant sequences. Most of the markers required discrimination of single base differences. To confirm successful amplification for the two largest PCR targets, probes were also designed for invariant regions of *apoE* and *ACE*. Candidate probe sequences were selected initially using published guidelines (Thein and Wallace 1986), with the assistance of the MELT program by J. Wetmur (Mt. Sinai School of Medicine, New York, NY; see also Wetmur 1991) for calculation of dissociation temperatures. Sequences were then modified to meet sensitivity and specificity requirements under the assay temperature and buffer conditions. Concentrations of the final 70 probes were chosen to achieve signal balance between alleles at each variable site, and for generally comparable intensities among all of the loci. Probes were conjugated at their 5' ends to bovine serum albumin (BSA) by methods similar to Tung et al. (1991), then applied in a linear array to sheets of backed nylon membrane using a Linear Stripper and Multispense2000 controller (IVEK, N. Springfield, VT). Each sheet was cut into strips between 0.35 and 0.5 cm in width. The probes on "Probe Strip A" corresponded to the targets amplified by the multiplex A primer pool; "Probe Strips B and B2" corresponded to the targets amplified by the multiplex B primer pool.

### Control DNA Templates

Total genomic DNA from three cell lines was used for preliminary experiments: Molt-4 (GM02219C from the Human Genetic Mutant Cell Repository, Coriell Institute, Camden, NJ), KASO11 (no. 9009 from the 10th International Histocompatibility Workshop; Dupont 1987), and CRK (kindly provided by the Clinical Immunogenetics Laboratory, Fred Hutchinson Cancer Center, Seattle, WA). Genomic DNA samples previously characterized at individual sites by other methods were generously provided by G. Assmann and H. Funke (Westfälisches Wilhelms-Universität, Münster, Germany) for *ACE*, *apoB3500*, *apoE*, *CETP405*, *LPL9*, *LPL291*, *LPL447*, and *MTHFR677*; P.F. Bray (Johns Hopkins University, Baltimore,

MD) for *GP3IIa*; F. Chehab (University of California, San Francisco, CA) for *factor V* Leiden; R.M. Krauss and P. Blanche (Lawrence Berkeley Laboratory, Berkeley, CA) for *apoB3500*, *apoCIII3206*, and *apoE*; and B. Shane (University of California, Berkeley, CA) for *MTHFR677*. Single-stranded templates containing the point mutations in *CBS* exons 3 and 8 were prepared on an Applied Biosystems 394 DNA Synthesizer, then converted to double-stranded templates by PCR, using the appropriate primer pairs from the multiplex primer pools. For the remaining markers, variant alleles that were identified during development of the assay itself were confirmed by sequencing using Dye Terminator and dRhodamine Terminator Cycle Sequencing Kits with an ABI Prism DNA Sequencer (Perkin-Elmer). All of these samples were used as controls to guide the optimization of probe sequences and concentrations for specificity and sensitivity.

### Additional Reagents

MicroAmp tubes for PCR, dNTPs (N = A, G, C, U), and AmpliTaq Gold DNA polymerase were obtained from Perkin-Elmer. Deaza-dGTP was obtained from Boehringer Mannheim Biochemicals (Indianapolis, IN; now Roche Molecular Biochemicals). For higher volume assays, PCRs were performed in 96-well Thermowell Polypropylene Plates with Sealing Mats (Corning Costar, Cambridge, MA). Typing Trays (20-well capacity, amber lid), denaturation solution (1.6% NaOH), SSPE concentrate (20× sodium phosphate solution with NaCl, EDTA), SDS concentrate (20%), streptavidin-horseradish peroxidase conjugate (SA-HRP), substrates A (0.01% H<sub>2</sub>O<sub>2</sub> in citrate solution) and B (0.1% 3,3',5,5'-tetramethylbenzidine in 40% dimethylformamide) for color development, and citrate concentrate (40×) were obtained from Roche Diagnostic Systems (Branchburg, NJ). For manual assays, color development reagent was prepared by mixing five volumes of substrate A per volume of substrate B; for automated assays, substrate A was reduced to four volumes per volume of substrate B.

### PCR Amplifications

Approximately 50 ng of total genomic DNA was used for each assay, 25 ng for each multiplex A and multiplex B reaction. In addition to the primer pools, each 50- $\mu$ l reaction contained 20 mM Tris-HCl [0.2 M stock (pH 8.3) at 25°C], 50 mM KCl, 8.5% DMSO (vol/vol), 0.1 mM dATP, 0.1 mM dCTP, 0.07 mM dGTP, 0.03 mM 7-deaza-dGTP, 0.2 mM dUTP, 1.7 mM MgCl<sub>2</sub> or MgOAc<sub>2</sub>, and 7 units of AmpliTaq Gold. The final concentration of 8.5% DMSO was chosen to enable reliable amplification of the *apoE* alleles with minimal adverse impact on the yields of other products such as the  $\beta$ -fibrinogen promoter region, which is relatively high in AT-bp content. Deaza-dGTP was also incorporated to facilitate amplification of regions high in GC content. Deoxy-UTP was included for compatibility with the use of uracil N-glycosylase to eliminate PCR product contamination (Longo et al. 1990). Samples were amplified in a Perkin-Elmer GeneAmp PCR System 9600 using a 2.4-hr thermal cycling profile: an initial hold of 94°C for 12.5 min; then 33 cycles of 96°C for 15 sec, 60°C for 1 min, and 72°C for 1.25 min; and a final extension step of 68°C for 5 min.

During assay development, 3- to 5- $\mu$ l aliquots were run on horizontal agarose gels using 3% NuSieve, 1% SeaKem GTG agarose (FMC BioProducts, Rockland, ME) in TBE (89 mM Tris-borate, 1 mM EDTA) with ethidium bromide.  $\Phi$ X174 RF DNA/*Hae*III fragments and 123-bp DNA ladder (GIBCO BRL, Gaithersburg, MD) were used as molecular weight standards.

### Allele-Specific Detection

The assay was initially developed at 50°C, and the final 52°C assay temperature reflects a compromise made to improve specificity at the *apoCIII* (-625) site. This marker is the presence (more frequent allele) or absence (less frequent allele) of an A:T bp between a G:C bp doublet and quartet within a generally GC-rich region. Sufficient discrimination between these alleles was achieved only by introducing G:T mismatches into the deletion-specific probe sequence; these relatively stable mismatches (Thein and Wallace 1986) destabilized the region sufficiently to reduce cross-hybridization with wild-type PCR product while maintaining sensitivity for the variant allele. Improved discrimination between *apoCIII* (-625) alleles was also observed at assay temperatures >52°C, but the signal intensities from probes for other markers were adversely affected by these higher temperatures (data not shown).

Therefore, detection of amplified alleles was performed at 52°C using a water bath rotating at 50–60 rpm (Hot Shaker Plus; Bellco, Vineland, NJ). Probe strips were first washed to remove unbound probe in 2× SSPE (0.36 M NaCl, 0.02 M Na<sub>2</sub>HPO<sub>4</sub>, 2 mM EDTA, adjusted to pH 7.4 with NaOH), 0.5% SDS. Twenty-microliter aliquots of the biotinylated PCR product pools from multiplex A and B reactions were denatured with equal volumes of denaturation solution, then added to Typing Tray wells containing 3 ml of hybridization buffer (4× SSPE, 0.5% SDS) and a correspondingly labeled probe strip A or probe strip B. Probe strip B2 was included with strip B. After 20 min at 52°C, the hybridization solution was replaced with fresh buffer containing 10  $\mu$ l of SA-HRP and the strips were returned to the water bath for 5 min. This enzyme conjugate solution was then replaced with the stringent wash buffer (2× SSPE, 0.5% SDS), and the strips were returned to the water bath for 12 min. The washed strips were equilibrated in 50 mM Na-citrate at room temperature on a rotating (50–60 rpm) platform (Gyrotory Shaker Model G2; New Brunswick Scientific, Edison, NJ), then agitated in color development reagent for 8–10 min at room temperature. Developed strips were rinsed with distilled water, aligned on a flat surface next to a guide identifying the allele detected by each probe line, and photographed using type 559 or 55 film from Polaroid (Cambridge, MA). Genotype interpretations were made manually and independently by two individuals. Given this protocol, at least 40 DNA samples per day can be genotyped by one individual. An SLT ProfiBlot IIT (Tecan US, Research Triangle Park, NC) can also be used to automate the hybridization, stringent wash, and color development steps for 12 samples (24 wells) at a time. This level of automation can be used to increase the throughput of one individual to at least 75 samples per day.

### Test Cohorts

To estimate population frequencies, the assay was used to genotype a subset of 1190 samples from 286 families of the Stanislas cohort recruited from families within eastern France (Siest et al. 1998). DNA was prepared from whole blood by the method of salting-out (Miller et al. 1988). These samples had been genotyped for *apoE*, *LPL447*, and *ACE* by methods described previously (Hixson and Vernier 1990; Evans et al. 1994; Salah et al. 1997).

The UCSF cohort was a composite cohort of 142 unrelated caucasian individuals recruited from clinics within the San Francisco Bay area (California, USA). These individuals

had been recruited on the basis of a family history of disease, hyperlipidemia, or a treadmill test indication for angiography. Total cholesterol levels ranged from 162 to 548 mg/dl, with an average of  $323 \pm 69$  mg/dl. DNA was prepared from whole blood either by the method of Bell (Bell et al. 1981) or using the Puregene DNA Isolation Kit (Gentra Systems, Inc., Minneapolis, MN). Each DNA sample was associated with a Gensini score, which assigns greater weight to proximal lesions identified through quantitative angiography (Gensini 1975). Fifty of the samples were from men with an average age of  $45.5 \pm 8.5$  years at the time of angiography, and Gensini scores ranging from 5 to 135. Ninety-two samples were from women with an average age of  $54.0 \pm 11.4$  years, and Gensini scores ranging from 0 to 120. Some of these individuals had already been genotyped for *apoE* and *apoB3500* by methods described previously (Hixson and Vernier 1990; Pullinger et al. 1995).

### Allele Frequencies and Linkage Disequilibrium Analysis

Population frequencies were estimated from allele counts among 496 unrelated parents from the Stanislas cohort for whom all 35 sites had been genotyped. Allele frequencies were also calculated for the UCSF cohort. Deviation from Hardy-Weinberg equilibrium was assessed using the  $\chi^2$  statistic.

Intragenic haplotypes for multiple markers within the *apoCIII*, *LPL*, and *ELAM* loci were estimated using the Family Analysis Program (v. PL1; M. Neugebauer and M.P. Baur; Neugebauer et al. 1984) from 275 families (1100 chromosomes) within the Stanislas cohort. This data set included families for whom markers on probe strip B2 had not been genotyped because of the rarity of variation at these four markers; therefore, this data set included samples that were not counted in the estimation of population frequencies. The intragenic haplotypes were used to estimate pairwise linkage disequilibrium values ( $D'$ ; Lewontin 1964; Klitz et al. 1995) between consecutive sites within each locus.

### Evaluation of Disease Association

The UCSF cohort was divided into quintiles based on the Gensini scores. The first combined gender quintile (Q1) contained the 28 lowest scores (0–8), and the fifth quintile (Q5) contained the 28 highest scores (35–135). The male subset was deemed insufficient in size for separate analysis, but the female subset was considered separately: female-only quintile 1 (FQ1) contained the 20 lowest scores (0–7); FQ5 contained the 18 highest scores (36–120).

A preliminary analysis of disease association was undertaken for a subset of 15 markers: *apoE*, *apoB71*, all *apoCIII* sites except 3175, *CETP405*, *PON192*, *ACE*, *ATIIR*, *AGT*, *CBS278*, *MTHFR677*, *GP1IIa*, and *fibrinogen*. For the remaining markers, the observed variant allele frequencies were deemed too rare for such an analysis. In addition, nearly complete linkage disequilibrium was observed between *apoCIII* sites (–625) and (–455); therefore, these two were subsequently treated as one marker. Disease association was examined by comparing the extreme quintiles, interpreting Q1 and FQ1 as individuals having little or no disease, and Q5 and FQ5 as individuals having the most severe disease. Heterozygous and homozygous carriers of the variant alleles were counted together, with the exception of *ACE*. The *ACE* alleles were grouped in two ways, consistent with combining either carriers of the reported risk allele (*D/D*, *I/D*) or carriers of the less frequent allele (*I/I*, *I/D*). For *apoE*, *e3/e4* and *e4/e4* were counted to-

gether; no *e2/e4* genotypes were observed in any of the quintiles used for this analysis. For single sites (more frequent allele *A*, less frequent allele *a*), the odds ratios corresponded to the risk associated with carriers of the less frequent allele (*Aa* or *aa* genotypes) relative to the *AA* genotype. For pairwise combinations of sites, odds ratios were calculated for the risk associated with having variant alleles at two sites compared with just one site. Odds ratios were calculated with Haldane's correction when necessary (Haldane 1955). *P* values were calculated using Fisher's two-tailed exact test (Sokal and Rohlf 1995). These analyses were intended to be exploratory; therefore, no formal correction for multiple testing was applied.

### ACKNOWLEDGMENTS

We are indebted to our collaborators for their expert advice and generous gifts of characterized DNA samples: G. Assmann and H. Funke (Westfälische Wilhelms-Universität), S. Humphries and I. Day (University College of London Medical School), R. Krauss and P. Blanche (Lawrence Berkeley National Laboratory), P. Bray (Johns Hopkins Medical School), F. Chehab (University of California, San Francisco), and B. Shane (University of California, Berkeley). This work would not have been possible without the support of the Oligo Synthesis and Sequencing Groups at Roche Molecular Systems, and we thank A. Turck and J. Novotny for their technical advice. We also thank R. Higuchi, J. Sninsky, and T. White for their enthusiastic support.

The publication costs of this article were defrayed in part by payment of page charges. This article must therefore be hereby marked "advertisement" in accordance with 18 USC section 1734 solely to indicate this fact.

### REFERENCES

- Agellon, L.B., E.M. Quinet, T.G. Gillette, D.T. Drayna, M.L. Brown, and A.R. Tall. 1990. Organization of the human cholesteryl ester transfer protein gene. *Biochemistry* **29**: 1372–1376.
- Bell, G.I., J.H. Karam, and W.J. Rutter. 1981. Polymorphic DNA region adjacent to the 5' end of the human insulin gene. *Proc. Natl. Acad. Sci.* **78**: 5759–5763.
- Bertina, R.M., B.P.C. Koelman, T. Koster, F.R. Rosendaal, R.J. Dirven, H. de Ronde, P.A. van der Velden, and P.H. Reitsma. 1994. Mutation in blood coagulation factor V associated with resistance to activated protein C. *Nature* **369**: 64–67.
- Bonnardeaux, A., E. Davies, X. Jeunemaitre, I. Féry, A. Charru, E. Clauser, L. Tiret, R. Cambien, P. Corvol, and F. Soubrier. 1994. Angiotensin II type I receptor gene polymorphisms in human essential hypertension. *Hypertension* **24**: 63–69.
- Bonne, G., L. Carrier, P. Richard, B. Hainque, and K. Schwartz. 1998. Familial hypertrophic cardiomyopathy: From mutations to functional defects. *Circ. Res.* **83**: 580–593.
- Cambien, F., O. Poirier, L. Lecerf, A. Evans, J.-P. Cambou, D. Arveiler, G. Luc, J.-M. Bard, L. Bara, S. Ricard, et al. 1992. Deletion polymorphism in the gene for angiotensin-converting enzyme is a potent risk factor for myocardial infarction. *Nature* **359**: 641–644.
- Cattaneo, M., M.Y. Tsai, P. Bucciarelli, E. Taioli, M.L. Zighetti, M. Bignell, and P.M. Mannucci. 1997. A common mutation in the methylenetetrahydrofolate reductase gene (C677T) increases the risk for deep-vein thrombosis with mutant factor V (factor V:Q506). *Arterioscler. Thromb. Vasc. Biol.* **17**: 1662–1666.
- Cheng, S., C. Pallaud, M.A. Grow, S.J. Scharf, H.A. Erlich, W. Klitz, C.R. Pullinger, M.J. Malloy, J.P. Kane, G. Siest, and S. Visvikis. 1998. A multilocus genotyping assay for cardiovascular disease. *Clin. Chem. Lab. Med.* **36**: 561–566.
- Christensen, B., P. Frosst, S. Lussier-Cacan, J. Selhub, P. Goyette, D.S. Rosenblatt, J. Genest Jr., and R. Rozen. 1997. Correlation of a common mutation in the methylenetetrahydrofolate reductase

- gene with plasma homocysteine in patients with premature coronary artery disease. *Arterioscler. Thromb. Vasc. Biol.* **17**: 569–573.
- Clark, A.G., K.M. Weiss, D.A. Nickerson, S.L. Taylor, A. Buchanan, J. Stengård, V. Salomaa, E. Vartiainen, M. Perola, E. Boerwinkle, and C.F. Sing. 1998. Haplotype structure and population genetic inferences from nucleotide-sequence variation in human lipoprotein lipase. *Am. J. Hum. Genet.* **63**: 595–612.
- Cook, N.S. and D. Ubben. 1990. Fibrinogen as a major risk factor in cardiovascular disease. *Trends Pharmacol. Sci.* **11**: 444–451.
- Dammerman, M., L.A. Sandkuijl, J.L. Halaas, W. Chung, and J.L. Breslow. 1993. An apolipoprotein CIII haplotype protective against hypertriglyceridemia is specified by promoter and 3' untranslated region polymorphisms. *Proc. Natl. Acad. Sci.* **90**: 4562–4566.
- Dawber, T.R., G.F. Meadors, and F.F. Moore. 1951. Epidemiological approaches to heart disease: The Framingham study. *Am. J. Public Health* **41**: 279–286.
- Day, I.N.M., R.A. Whittall, S.D. O'Dell, L. Haddad, M.K. Bolla, V. Gudnason, and S.E. Humphries. 1997. Spectrum of LDL receptor gene mutations in heterozygous familial hypercholesterolemia. *Hum. Mutat.* **10**: 116–127.
- de Knijff, P., A.M.J.M. van den Maagdenberg, R.R. Frants, and L.M. Havekes. 1994. Genetic heterogeneity of apolipoprotein E and its influence on plasma lipid and lipoprotein levels. *Hum. Mutat.* **4**: 178–194.
- Dupont, B. 1987. *Immunobiology of HLA, Vol. 1: Histocompatibility testing*. Springer-Verlag, New York, NY.
- Ehrenborg, E., S.M. Clee, S.N. Pimstone, P.W.A. Reymer, P. Benlian, C.F. Hoogendijk, H.J. Davis, N. Bissada, L. Miao, S.E. Gagné et al. 1997. Ethnic variation and in vivo effects of the  $-93t \rightarrow g$  promoter variant in the lipoprotein lipase gene. *Arterioscler. Thromb. Vasc. Biol.* **17**: 2672–2678.
- Evans, A.E., O. Poirier, F. Kee, L. Lecerf, E. McCrum, T. Falconer, J. Crane, D.F. O'Rourke, and F. Cambien. 1994. Polymorphisms of the angiotensin-converting-enzyme gene in subjects who die from coronary heart disease. *Q. J. Med.* **87**: 211–214.
- Frosst, P., H.J. Blom, R. Milos, P. Goyette, C.A. Sheppard, R.G. Matthews, G.J.H. Boers, M. den Heijer, L.A.J. Kluijtmans, L.P. van den Heuvel, and R. Rozen. 1995. A candidate genetic risk factor for vascular disease: A common mutation in methylenetetrahydrofolate reductase. *Nat. Genet.* **10**: 111–113.
- Funke, H., H. Wiebusch, L. Fuer, S. Muntoni, H. Schulte, and G. Assmann. 1994. Identification of mutations in the cholesterol ester transfer protein in Europeans with elevated high-density-lipoprotein cholesterol. *Circulation* **90**: 241.
- Gensini, G.G. 1975. *Coronary arteriography*. Futura Publishing Co., New York, NY.
- Goyette, P., P. Frosst, D.S. Rosenblatt, and R. Rozen. 1995. Seven novel mutations in the methylenetetrahydrofolate reductase gene and genotype/phenotype correlations in severe methylenetetrahydrofolate reductase deficiency. *Am. J. Hum. Genet.* **56**: 1052–1059.
- Green, F., A. Hamsten, M. Blombäck, and S. Humphries. 1993. The role of  $\beta$ -fibrinogen genotype in determining plasma fibrinogen levels in young survivors of myocardial infarction and healthy controls from Sweden. *Thromb. Haemost.* **70**: 915–920.
- Groenemeijer, B.E., M.D. Hallman, P.W.A. Reymer, E. Gagné, J.A. Kuivenhoven, T. Bruin, H. Jansen, K.I. Lie, A.V.G. Brusckke, E. Boerwinkle, M.R. Hayden, and J.J.P. Kastelein. 1997. Genetic variant showing a positive interaction with  $\beta$ -blocking agents with a beneficial influence on lipoprotein lipase activity, HDL cholesterol, and triglyceride levels in coronary artery disease patients. *Circulation* **95**: 2628–2635.
- Gudnason, V., K. Thormar, and S.E. Humphries. 1997. Interaction of the cholesteryl ester transfer protein 1405V polymorphism with alcohol consumption in smoking and non-smoking healthy men, and the effect on plasma HDL cholesterol and apoAI concentration. *Clin. Genet.* **51**: 15–21.
- Haldane, J.B.S. 1955. The estimation and significance of the logarithm of a ratio of frequencies. *Ann. Human Genet.* **20**: 309–311.
- Hall, S., G. Chu, G. Miller, K. Cruickshank, J.A. Cooper, S.E. Humphries, and P.J. Talmud. 1997. A common mutation in the lipoprotein lipase gene promoter,  $-93T/G$ , is associated with lower plasma triglyceride levels and increased promoter activity *in vitro*. *Arterioscler. Thromb. Vasc. Biol.* **17**: 1969–1976.
- Hata, A., M. Robertson, M. Emi, and J.-M. Lalouel. 1990. Direct detection and automated sequencing of individual alleles after electrophoretic strand separation: Identification of a common nonsense mutation in exon 9 of the human lipoprotein lipase gene. *Nucleic Acids Res.* **18**: 5407–5411.
- Hegele, R.A., J.H. Brunst, and P.W. Connelly. 1995. A polymorphism of the paraoxonase gene associated with variation in plasma lipoproteins in a genetic isolate. *Arterioscler. Thromb. Vasc. Biol.* **15**: 89–95.
- Hixson, J.E. and Pathobiological Determinants of Atherosclerosis in Youth (PDAY) Research Group. 1991. Apolipoprotein E polymorphisms affect atherosclerosis in young males. *Arterioscler. Thromb. Vasc. Biol.* **11**: 1237–1244.
- Hixson, J.E. and D.T. Vernier. 1990. Restriction isotyping of human apolipoprotein E by gene amplification and cleavage with *HhaI*. *J. Lipid Res.* **31**: 545–548.
- Hobbs, H.H., M.S. Brown, and J.L. Goldstein. 1992. Molecular genetics of the LDL receptor gene in familial hypercholesterolemia. *Hum. Mutat.* **1**: 445–466.
- Hoeg, J.M. 1997. Evaluating coronary heart disease risk. *J. Am. Med. Assoc.* **277**: 1387–1390.
- Houlston, R.S., C. Snowden, F. Green, K.G.M.M. Alberti, and S.E. Humphries. 1989. Apolipoprotein (apo) E genotypes by polymerase chain reaction and allele-specific oligonucleotide probes: No detectable linkage disequilibrium between apo E and apo CII. *Hum. Genet.* **83**: 364–368.
- Hu, F.L., Z. Gu, V. Kozich, J.P. Kraus, V. Ramesh, and V.E. Shih. 1993. Molecular basis of cystathionine  $\beta$ -synthase gene deficiency in pyridoxine responsive and nonresponsive homocystinuria. *Hum. Mol. Genet.* **2**: 1857–1860.
- Humbert, R., D.A. Adler, C.M. Disteche, C. Hassett, C.J. Omiecinski, and C.E. Furlong. 1993. The molecular basis of the human serum paraoxonase activity polymorphism. *Nat. Genet.* **3**: 73–76.
- Humphries, S.E. and P.J. Talmud. 1995. Hyperlipidaemia associated with genetic variation in the apolipoprotein B gene. *Curr. Opin. Lipidol.* **6**: 215–222.
- Humphries, S.E., S. Ye, P. Talmud, L. Bara, L. Wilhelmsen, L. Tiret, and European Atherosclerosis Research Study (EARS). 1995. EARS: Genotype at the fibrinogen locus ( $G_{-455}A$   $\beta$ -gene) is associated with differences in plasma fibrinogen levels in young men and women from different regions in Europe. *Arterioscler. Thromb. Vasc. Biol.* **15**: 96–104.
- Humphries, S.E., P.J. Talmud, C. Cox, W. Sutherland, and J. Mann. 1996. Genetic factors affecting the consistency and magnitude of changes in plasma cholesterol in response to dietary challenge. *Quart. J. Med.* **89**: 671–680.
- Humphries, S.E., A. Panahloo, H.E. Montgomery, F. Green, and J. Yudkin. 1997. Gene-environment interaction in the determination of levels of haemostatic variables involved in thrombosis and fibrinolysis. *Thromb. Haemost.* **78**: 457–461.
- Jeunemaitre, X., F. Soubrier, Y.V. Kotelevtsev, R.P. Lifton, C.S. Williams, A. Charru, S.C. Hunt, P.N. Hopkins, R.R. Williams, J.-M. Lalouel, and P. Corvol. 1992. Molecular basis of human hypertension: Role of angiotensinogen. *Cell* **71**: 169–180.
- Jin, Y., H.C. Dietz, A. Nurden, and P.F. Bray. 1993. Single-strand conformation polymorphism analysis is a rapid and effective method for the identification of mutations and polymorphisms in the gene for glycoprotein IIIa. *Blood* **82**: 2281–2288.
- Jukema, J.W., A.J. van Boven, B. Groenemeijer, A.H. Zwinderman, J.H.C. Reiber, A.V.G. Brusckke, J.A. Henneman, G.P. Molhoek, T. Bruin, H. Jansen, E. Gagné, M.R. Hayden, J.J.P. Kastelein, and on behalf of the REGRESS Study Group. 1996. The  $asp_{65n}$  mutation in the lipoprotein lipase gene is associated with increased progression of coronary atherosclerosis. *Circulation* **94**: 1913–1918.
- Kalafatis, M. and K.G. Mann. 1997. Factor  $V^{Leiden}$  and thrombophilia. *Arterioscler. Thromb. Vasc. Biol.* **17**: 620–627.

- Klitz, W., J.C. Stephens, M. Grote, and M. Carrington. 1995. Discordant patterns of linkage disequilibrium of the peptide-transporter loci within the HLA class II region. *Am. J. Hum. Genet.* **57**: 1436–1444.
- Kluijtmans, L.A.J., L.P.W.J. van den Heuvel, G.H.J. Boers, P. Frosst, E.M.B. Stevens, B.A. van Oost, M. den Heijer, F.J.M. Trijbels, R. Rozen, and H.J. Blom. 1996. Molecular genetic analysis in mild hyperhomocysteinemia: A common mutation in the methylenetetrahydrofolate reductase gene is a genetic risk factor for cardiovascular disease. *Am. J. Hum. Genet.* **58**: 35–41.
- Kozich, V. and J.P. Kraus. 1992. Screening for mutations by expressing patient cDNA segments in *E. coli*: Homocystinuria due to cystathionine  $\beta$ -synthase deficiency. *Hum. Mutat.* **1**: 113–123.
- Kozich, V., R. de Franchis, and J.P. Kraus. 1993. Molecular defect in a patient with pyridoxine-responsive homocystinuria. *Hum. Mol. Genet.* **2**: 815–816.
- Kuivenhoven, J.A., B.E. Groenemeyer, J.M.A. Boer, P.W.A. Reymers, R. Berghuis, T. Bruin, H. Jansen, J.C. Seidell, and J.J.P. Kastelein. 1997. Ser<sup>447stop</sup> mutation in lipoprotein lipase is associated with elevated HDL cholesterol levels in normolipidemic males. *Arterioscler. Thromb. Vasc. Biol.* **17**: 595–599.
- Kuivenhoven, J.A., J.W. Jukema, A.H. Zwinderman, P. de Knijff, R. McPherson, A.V.G. Brusckhe, K.I. Lie, and J.J.P. Kastelein. 1998. The role of a common variant of the cholesteryl ester transfer protein gene in the progression of coronary atherosclerosis. *N. Engl. J. Med.* **338**: 86–93.
- Lassel, T.S., M. Guérin, S. Auboiron, M.J. Chapman, and B. Guy-Grand. 1998. Preferential cholesteryl ester acceptors among triglyceride-rich lipoproteins during alimentary lipemia in normolipidemic subjects. *Arterioscler. Thromb. Vasc. Biol.* **18**: 65–74.
- Lewontin, R.C. 1964. The interaction of selection and linkage. I. General considerations: Heterotic models. *Genetics* **49**: 49–67.
- Lindpaintner, K., M.A. Pfeiffer, R. Kreutz, M.J. Stampfer, F. Grodstein, F. LaMotte, J. Buring, and C.H. Hennekens. 1995. A prospective evaluation of an angiotensin-converting-enzyme gene polymorphism and the risk of ischemic heart disease. *N. Engl. J. Med.* **332**: 706–711.
- Longo, M.C., M.S. Berninger, and J.L. Hartley. 1990. Use of uracil DNA glycosylase to control carry-over contamination in polymerase chain reactions. *Gene* **93**: 125–128.
- Ludwig, E., P.S. Corneli, J.L. Anderson, H.W. Marshall, J.-M. Lalouel, and R.H. Ward. 1995. Angiotensin-converting enzyme gene polymorphism is associated with myocardial infarction but not with development of coronary stenosis. *Circulation* **91**: 2120–2124.
- Mackness, M.I., S. Arrol, B. Mackness, and P.N. Durrington. 1997. Alloenzymes of paraoxonase and effectiveness of high-density lipoproteins in protecting low-density lipoprotein against lipid peroxidation. *Lancet* **349**: 851–852.
- Mahley, R.W. 1988. Apolipoprotein E: Cholesterol transport protein with expanding role in cell biology. *Science* **240**: 622–630.
- Maily, F., Y. Tugrul, P.W.A. Reymers, T. Bruin, M. Seed, B.F. Groenemeyer, A. Asplund-Carlson, D. Vallance, A.F. Winder, G.J. Miller et al. 1995. A common variant in the gene for lipoprotein lipase (Asp9  $\rightarrow$  Asn). *Arterioscler. Thromb. Vasc. Biol.* **15**: 468–478.
- Mannucci, P.M. 1995. Recent progress in the pathophysiology of fibrinogen. *Eur. Heart J. (Suppl. A)* **16**: 25–30.
- Marble, M., M.T. Geraghty, R. de Franchis, J.P. Kraus, and D. Valle. 1994. Characterization of a cystathionine  $\beta$ -synthase allele with three mutations in *cis* in a patient with B<sub>6</sub> nonresponsive homocystinuria. *Hum. Mol. Genet.* **3**: 1883–1886.
- Miller, S.A., D.D. Dykes, and H.F. Polesky. 1988. A simple salting out procedure for extracting DNA from human nucleated cells. *Nucleic Acids Res.* **16**: 1215.
- Morgan, L., F.B. Pipkin, and N. Kalsheker. 1996. Angiotensinogen: Molecular biology, biochemistry and physiology. *Int. J. Biochem. Cell Biol.* **28**: 1211–1222.
- Mullis, K.B. and F.A. Faloona. 1987. Specific synthesis of DNA in vitro via a polymerase-catalyzed chain reaction. *Methods in Enzymol.* **155**: 335–350.
- Neugebauer, M., J. Willems, and M.P. Baur. 1984. Analysis of multilocus pedigree data by computer. In *Histocompatibility testing* (ed. E.D. Albert), pp. 52–58. Springer-Verlag, Berlin, Germany.
- Newman, P.J., R.S. Derbes, and R.H. Aster. 1989. The human platelet alloantigens, PI<sup>A1</sup> and PI<sup>A2</sup>, are associated with a leucine<sup>33</sup>/proline<sup>33</sup> amino acid polymorphism in membrane glycoprotein IIIa, and are distinguishable by DNA typing. *J. Clin. Invest.* **83**: 1778–1781.
- Nickerson, D.A., S.L. Taylor, K.M. Weiss, A.G. Clark, R.G. Hutchinson, J. Stengård, V. Salomaa, E. Vartiainen, E. Boerwinkle, and C.F. Sing. 1998. DNA sequence diversity in a 9.7-kb region of the human lipoprotein lipase gene. *Nat. Genet.* **19**: 233–240.
- Nurden, A.T. 1996. Polymorphisms of human platelet membrane glycoproteins: Structure and clinical significance. *Thromb. Haemost.* **74**: 345–351.
- Oka, K., G.T. Tkalecivic, T. Nakano, H. Tucker, K. Ishimura-Oka, and W.V. Brown. 1990. Structure and polymorphic map of human lipoprotein lipase gene. *Biochim. Biophys. Acta* **1049**: 21–26.
- Ordovas, J.M., F. Civeira, J. Genest Jr., S. Craig, A.H. Robbins, T. Meade, M. Pocovi, P.M. Frossard, U. Masharani, P.W.F. Wilson et al. 1991. Restriction fragment length polymorphisms of the apolipoprotein A-I, C-III, A-IV gene locus. *Atherosclerosis* **87**: 75–86.
- Pasternak, R.C., S.M. Grundy, D. Levy, and P.D. Thompson. 1996. 27th Bethesda Conference: Matching the intensity of risk factor management with the hazard for coronary disease events. Task Force 3. Spectrum of risk factors for coronary heart disease. *J. Am. Coll. Cardiol.* **27**: 978–990.
- Pastinen, T., M. Perola, P. Niini, J. Terwilliger, V. Salomaa, E. Vartiainen, L. Peltonen, and A.-C. Syvänen. 1998. Array-based multiplex analysis of candidate genes reveals two independent and additive genetic risk factors for myocardial infarction in the Finnish population. *Hum. Mol. Genet.* **7**: 1453–1462.
- Pullinger, C.R., L.K. Hennessy, J.E. Chatterton, W. Liu, J.A. Love, C.M. Mendel, P.H. Frost, M.J. Malloy, V.N. Schumaker, and J.P. Kane. 1995. Familial ligand-defective apolipoprotein B. *J. Clin. Invest.* **95**: 1225–1234.
- Rees, A., J. Stocks, C.R. Sharpe, M.A. Vella, C.C. Shoulders, J. Katz, N.I. Jowett, F.E. Baralle, and D.J. Galton. 1985. Deoxyribonucleic acid polymorphism in the apolipoprotein A-I-C-III gene cluster. *J. Clin. Invest.* **76**: 1090–1095.
- Reymers, P.W.A., B.E. Groenemeyer, E. Gagné, L. Miao, E.E.G. Appelman, J.C. Seidell, D. Kromhout, S.M. Bijvoet, K. van de Oever, T. Bruin, M.R. Hayden, and J.J.P. Kastelein. 1995. A frequently occurring mutation in the lipoprotein lipase gene (Asn291Ser) contributes to the expression of familial combined hyperlipidemia. *Hum. Mol. Genet.* **4**: 1543–1549.
- Ridker, P.M., C.H. Hennekens, K. Lindpaintner, M.J. Stampfer, P.R. Eisenberg, and J.P. Miletich. 1995. Mutation in the gene coding for coagulation factor V and the risk of myocardial infarction, stroke, and venous thrombosis in apparently healthy men. *N. Engl. J. Med.* **332**: 912–917.
- Ridker, P.M., C.H. Hennekens, C. Schmitz, M.J. Stampfer, and K. Lindpaintner. 1997. PI<sup>A1/A2</sup> polymorphism of platelet glycoprotein IIIa and risks of myocardial infarction, stroke, and venous thrombosis. *Lancet* **349**: 385–388.
- Rigat, B., C. Hubert, P. Corvol, and F. Soubrier. 1992. PCR detection of the insertion/deletion polymorphism of the human angiotensin converting enzyme gene (DCP1) (dipeptidyl carboxypeptidase 1). *Nucleic Acids Res.* **20**: 1433.
- Saiki, R.K., D.H. Gelfand, S. Stoffel, S.J. Scharf, R. Higuchi, G.T. Horn, K.B. Mullis, and H.A. Erlich. 1988. Primer-directed enzymatic amplification of DNA with a thermostable DNA polymerase. *Science* **239**: 487–491.
- Saiki, R.K., P.S. Walsh, C.H. Levenson, and H.A. Erlich. 1989. Genetic analysis of amplified DNA with immobilized sequence-specific oligonucleotide probes. *Proc. Natl. Acad. Sci.* **86**: 6230–6234.
- Salah, D., K. Bohnet, R. Gueguen, G. Siest, and S. Visvikis. 1997. Combined effects of lipoprotein lipase and apolipoprotein levels in the Stanislas Cohort. *J. Lipid Res.* **38**: 132–141.

- Sanghera, D.K., N. Saha, C.E. Aston, and M.I. Kamboh. 1997. Genetic polymorphism of paraoxonase and the risk of coronary heart disease. *Arterioscler. Thromb. Vasc. Biol.* **17**: 1067–1073.
- Sebastio, G., M.P. Sperandio, M. Panico, R. de Franchis, J.P. Kraus, and G. Andria. 1995. The molecular basis of homocystinuria due to cystathionine  $\beta$ -synthase deficiency in Italian families, and report of four novel mutations. *Am. J. Hum. Genet.* **56**: 1324–1333.
- Serrato, M. and A.J. Marian. 1995. A variant of human paraoxonase/arylesterase (*HUMAPONA*) gene is a risk factor for coronary artery disease. *J. Clin. Invest.* **96**: 3005–3008.
- Siest, G., S. Visvikis, B. Herbeth, R. Gueguen, M. Vincent-Viry, C. Sass, B. Beaud, E. Lecomte, J. Steinmetz, J. Locuty, and P. Chevrier. 1998. Objectives, design and recruitment of a familial and longitudinal cohort for studying gene-environment interactions in the field of cardiovascular risk: The Stanislas Cohort. *Clin. Chem. Lab. Med.* **36**: 35–42.
- Sokal, R.R. and F.J. Rohlf. 1995. *Biometry*, 3rd ed. W.H. Freeman, San Francisco, CA.
- Soria, L.F., E.H. Ludwig, H.R.G. Clarke, G.L. Vega, S.M. Grundy, and B.J. McCarthy. 1989. Association between a specific apolipoprotein B mutation and familial defective apolipoprotein B-100. *Proc. Natl. Acad. Sci.* **86**: 587–591.
- Sperandio, M.P., R. de Franchis, G. Andria, and G. Sebastio. 1996. A 68-bp insertion found in a homocystinuric patient is a common variant and is skipped by alternative splicing of the cystathionine  $\beta$ -synthase mRNA. *Am. J. Hum. Genet.* **59**: 1391–1393.
- Takahashi, K., X.-C. Jiang, N. Sakai, S. Yamashita, K. Hirano, H. Bujo, H. Yamazaki, J. Kusunoki, T. Miura, P. Kussie, et al. 1993. A missense mutation in the cholesteryl ester transfer protein gene with possible dominant effects on plasma high density lipoproteins. *J. Clin. Invest.* **92**: 2060–2064.
- Tall, A. 1995. Plasma lipid transfer proteins. *Annu. Rev. Biochem.* **64**: 235–257.
- The MRFIT Research Group. 1982. Multiple Risk Factor Intervention Trial. Risk factor changes and mortality results. *J. Am. Med. Assoc.* **248**: 1465–1477.
- The Women's Health Initiative Study Group. 1998. Design of the Women's Health Initiative clinical trial and observational study. The Women's Health Initiative Study Group. *Control. Clin. Trials* **19**: 61–109.
- Thein, S.L. and R.B. Wallace. 1986. *The use of synthetic oligonucleotides as specific hybridization probes in the diagnosis of genetic disorders* (ed. K.E. Davies), pp. 33–50. IRL Press, Oxford, UK.
- Tikkanen, M.J., J. Viikari, H.K. Åkerblom, and E. Pesonen. 1988. Apolipoprotein B polymorphism and altered apolipoprotein B and low density lipoprotein cholesterol concentrations in Finnish children. *Br. Med. J.* **296**: 169–170.
- Tiret, L., A. Bonnardeaux, O. Poirier, S. Ricard, P. Marques-Vidal, A. Evans, D. Arveiler, G. Luc, F. Kee, P. Ducimetière, F. Soubrier, and F. Cambien. 1994. Synergistic effects of angiotensin-converting enzyme and angiotensin-II type I receptor gene polymorphisms on risk of myocardial infarction. *Lancet* **344**: 910–913.
- Tsai, M.Y., M. Bignell, K. Schwichtenberg, and N.Q. Hanson. 1996. High prevalence of a mutation in the cystathionine  $\beta$ -synthase gene. *Am. J. Hum. Genet.* **59**: 1262–1267.
- Tung, C.H., M.J. Rudolph, and S. Stein. 1991. Preparation of oligonucleotide-peptide conjugates. *Bioconjugate Chem.* **2**: 464–465.
- University College of London, accessed 1999. LDL-receptor mutation catalogue. <http://www.ucl.ac.uk/fh>.
- Weiss, E.J., P.F. Bray, M. Tayback, S.P. Schulman, T.S. Kickler, L.C. Becker, J.L. Weiss, G. Gerstenblith, and P.J. Goldschmidt-Clermont. 1996. A polymorphism of a platelet glycoprotein receptor as an inherited risk factor for coronary thrombosis. *N. Engl. J. Med.* **334**: 1090–1094.
- Wenzel, K., M. Ernst, K. Rohde, G. Baumann, and A. Speer. 1996. DNA polymorphisms in adhesion molecule genes—A new risk factor for early atherosclerosis. *Hum. Genet.* **97**: 15–20.
- Wenzel, K., S. Felix, F.X. Kleber, R. Brachold, T. Menke, S. Schattke, K.L. Schulte, C. Gläser, K. Rohde, G. Baumann, and A. Speer. 1994. E-selectin polymorphism and atherosclerosis: An association study. *Hum. Mol. Genet.* **3**: 1935–1937.
- Wetmur, J.G. 1991. DNA probes: Applications of the principles of nucleic acid hybridization. *Crit. Rev. Biochem. Mol. Biol.* **26**: 227–259.
- Wilson, P.W.F., R.B. D'Agostino, D. Levy, A.M. Belanger, H. Silbershatz, and W.B. Kannel. 1998. Prediction of coronary heart disease using risk factor categories. *Circulation* **97**: 1837–1847.
- Xu, C.-F., P. Talmud, H. Schuster, R. Houlston, G. Miller, and S. Humphries. 1994. Association between genetic variation at the Apo AI-CIII-AIV gene cluster and familial combined hyperlipidaemia. *Clin. Genet.* **46**: 385–397.
- Yang, W.-S., D.N. Nevin, R. Peng, J.D. Brunzell, and S.S. Deeb. 1995a. A mutation in the promoter of the lipoprotein lipase (LPL) gene in a patient with familial combined hyperlipidemia and low LPL activity. *Proc. Natl. Acad. Sci.* **92**: 4462–4466.
- . 1995b. A mutation in the promoter of the lipoprotein lipase (LPL) gene in a patient with familial combined hyperlipidemia and low LPL activity. *Proc. Natl. Acad. Sci.* **93**: 524.
- Young, S.G., S.J. Bertics, T.M. Scott, B.W. Dubois, W.F. Beltz, L.K. Curtiss, and J.L. Witztum. 1987. Apolipoprotein B allotypes MB19<sub>1</sub> and MB19<sub>2</sub> in subjects with coronary artery disease and hypercholesterolemia. *Arteriosclerosis* **7**: 61–65.
- Young, S.G. and S.T. Hubl. 1989. An *Apa*I restriction site polymorphism is associated with the MB19 polymorphism in apolipoprotein B. *J. Lipid Res.* **30**: 443–449.
- Zhang, H., P.W.A. Reymer, M.-S. Liu, I.J. Forsythe, B.E. Groenemeyer, J. Frohlich, J.D. Brunzell, J.J.P. Kastelein, M.R. Hayden, and Y. Ma. 1995. Patients with apoE3 deficiency (E2/2, E3/2, and E4/2) who manifest with hyperlipidemia have increased frequency of an asn 291  $\rightarrow$  ser mutation in the human LPL gene. *Arterioscler. Thromb. Vasc. Biol.* **15**: 1695–1703.
- Zhong, S., D.S. Sharp, J.S. Grove, C. Bruce, K. Yano, J.D. Curb, and A.R. Tall. 1996. Increased coronary heart disease in Japanese-American men with mutation in the cholesteryl ester transfer protein gene despite increased HDL levels. *J. Clin. Invest.* **97**: 2917–2923.

Received April 26, 1999; accepted in revised form August 2, 1999.