



Identification of Three Additional Genes Contiguous to the Glucocerebrosidase Locus on Chromosome 1q21: Implications for Gaucher Disease

Suzanne L. Winfield, Nahid Tayebi, Brian M. Martin, et al.

Genome Res. 1997 7: 1020-1026

Access the most recent version at doi:[10.1101/gr.7.10.1020](https://doi.org/10.1101/gr.7.10.1020)

References

This article cites 30 articles, 8 of which can be accessed free at:
<http://genome.cshlp.org/content/7/10/1020.full.html#ref-list-1>

License

Email Alerting Service

Receive free email alerts when new articles cite this article - sign up in the box at the top right corner of the article or [click here](#).



To subscribe to *Genome Research* go to:
<https://genome.cshlp.org/subscriptions>

Cold Spring Harbor Laboratory Press

LETTER

Identification of Three Additional Genes Contiguous to the Glucocerebrosidase Locus on Chromosome 1q21: Implications for Gaucher Disease

Suzanne L. Winfield, Nahid Tayebi, Brian M. Martin, Edward I. Ginns, and Ellen Sidransky¹

Clinical Neuroscience Branch, Intramural Research Program (IRP), National Institute of Mental Health, Bethesda, Maryland 20892

Gaucher disease results from the deficiency of the lysosomal enzyme glucocerebrosidase (EC 3.2.1.45). Although the functional gene for glucocerebrosidase (*GBA*) and its pseudogene (*psGBA*), located in close proximity on chromosome 1q21, have been studied extensively, the flanking sequence has not been well characterized. The recent identification of human metaxin (*MTX*) immediately downstream of *psGBA* prompted a closer analysis of the sequence of the entire region surrounding the *GBA* gene. We now report the genomic DNA sequence and organization of a 75-kb region around *GBA*, including the duplicated region containing *GBA* and *MTX*. The origin and endpoints of the duplication leading to the pseudogenes for *GBA* and *MTX* are now clearly established. We also have identified three new genes within the 32 kb of sequence upstream to *GBA*, all of which are transcribed in the same direction as *GBA*. Of these three genes, the gene most distal to *GBA* is a protein kinase (*clk2*). The second gene, *propinl*, has a 1.5-kb cDNA and shares homology to a rat secretory carrier membrane protein 37 (SCAMP37). Finally, *cotel*, a gene of unknown function lies most proximal to *GBA*. The possible contributions of these closely arrayed genes to the more atypical presentations of Gaucher disease is now under investigation.

[The sequence data described in this paper have been submitted to the GenBank data library under accession no. AF023268.]

Gaucher disease, the inherited deficiency of the enzyme glucocerebrosidase (EC 3.2.1.45), is the most common inherited lysosomal hydrolase deficiency. The gene for glucocerebrosidase (*GBA*) is located on chromosome 1q21 (Ginns et al. 1985) and is comprised of 11 exons (Horowitz et al. 1989). A highly homologous pseudogene (*psGBA*) is located nearby (Choudary et al. 1985), and has contributed significantly to the origin of mutations in *GBA* (Tsuji et al. 1987). Cormand et al. (1997) have recently provided a localization of this region relative to six markers from the Généthon human linkage map. Analyses of the mutations present in patients have revealed both single missense mutations (Beutler and Gelbart 1997) and other recombinant alleles, including several mutations that originate from the pseudogene sequence (Eyal et al. 1990; Latham et al. 1990). Patients have also been described with alleles resulting

from a fusion between *GBA* and *psGBA* (Zimran et al. 1990).

Many attempts have been made to correlate patient genotypes with the clinical presentation of Gaucher disease. Although there is some predictive value of certain alleles for either mild or severe disease (Zimran et al. 1989; Beutler and Grabowski 1995), no specific symptom complex can be correlated with a unique genotype (Sidransky et al. 1994; NIH Technology Assessment Panel 1996). Based on clinical presentation, Gaucher disease has been divided into three types. Type 1 patients have very heterogeneous presentations, ranging from asymptomatic adults to young children with severe hepatosplenomegaly and bone involvement. Type 2 is invariably fatal, with infants classically developing symptoms at 2–6 months and dying by 2 years of age (Frederickson and Sloan 1972). More recently, the severe phenotype of a knockout mouse model of Gaucher disease (Tybulewicz et al. 1992; Willemsen et al. 1995) prompted the recognition of a subset of severely affected type 2 patients who present and

¹Corresponding author.
E-MAIL sidranse@irp.nimh.nih.gov; FAX (301) 402-6438.

THREE NEW GENES IN THE GAUCHER LOCUS

die in the perinatal period (Sidransky et al. 1992). Type 3 includes patients with varying degrees of neurological impairment that develops in childhood or early adulthood.

A recent attempt to generate a point mutation mouse model of Gaucher disease led to the discovery of a novel gene, metaxin (*MTX*), which in the mouse is contiguous to and transcribed convergently to *GBA*. *MTX* shares a bidirectional promoter with the gene for thrombospondin 3 (*Thbs3*). The insertion of a neomycin resistance cassette in the 3' flanking region of *GBA* resulted in a knockout of the murine *MTX* (Bornstein et al. 1995). Metaxin is a component of the protein translocation apparatus of the mitochondrial outer membrane (Armstrong et al. 1997). Homozygosity for the *MTX* knockout results in an embryonic lethal phenotype. Human *MTX* is located downstream of *psGBA* and a pseudogene for metaxin (*psMTX*) was subsequently identified downstream of *GBA* in the intergenic region (Long et al. 1996). The region downstream of *psGBA* encodes for *MTX*, *Thbs3* (Vos et al. 1992;

Adolph et al. 1995), and polymorphic epithelial mucin 1 (*Muc1*) (Ligtenberg et al. 1990; Vos et al. 1995).

In this study we report the sequence of 75 kb of DNA flanking *GBA* and establish a more detailed organization of the locus.

RESULTS

The location of λ and plasmid subclones derived from a 410-kb yeast artificial chromosome (YAC) containing the *GBA* locus is shown in Figure 1. Southern blot analyses of DNA from one patient demonstrated a *GBA-psGBA* fusion gene and suggested that the functional gene is located 16 kb upstream to the pseudogene (Zimran et al. 1990). We have sequenced the entire intergenic region and confirm that the two sequences are located 16 kb apart. A comparison of sequences upstream to both *GBA* and *psGBA* has delineated the duplication that gave rise to *psGBA* and permitted an approximation

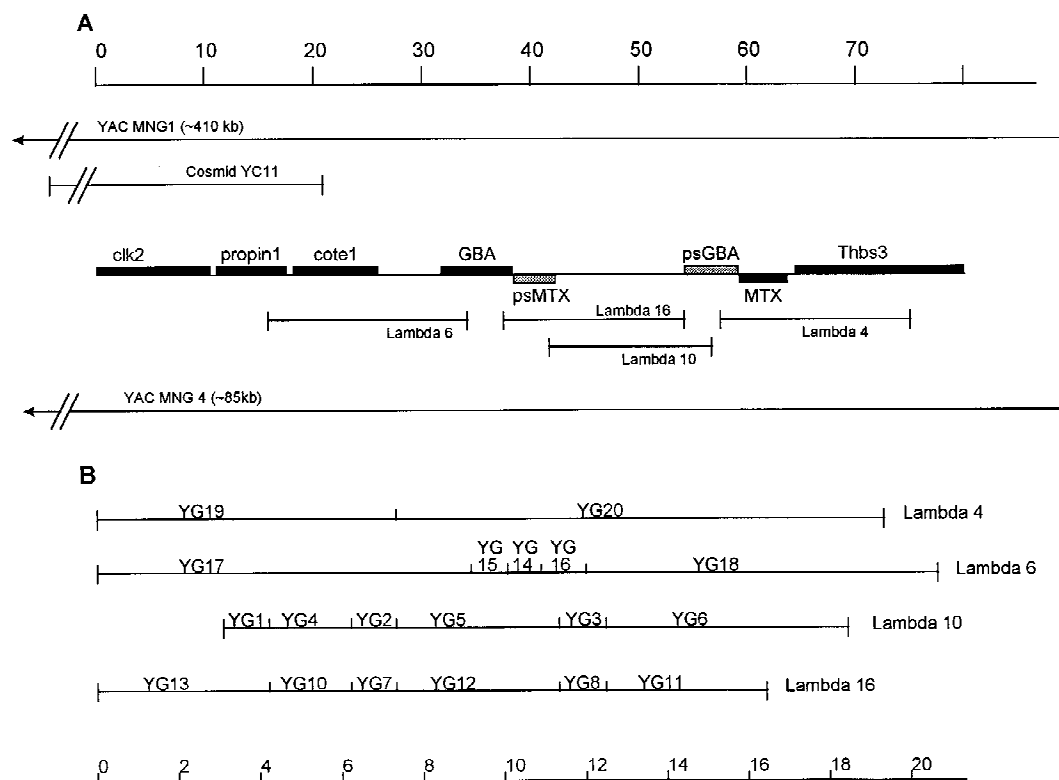


Figure 1 Map of clones and subclones on chromosome 1q21. (A) The YAC clone MNG1 was subcloned to cosmid YC11 or YAC MNG4. The λ subclones were derived from MNG4. The sequences of cosmid and λ subclones were compared to the sequences of genes in the GenBank database. The shaded boxes represent the genes at this locus. Genes shown above the line are transcribed *left to right*; *MTX* is transcribed in the opposite direction. (*psMTX* is not transcribed.) (B) Expanded map of λ clones, showing the *EcoRI* plasmid subclones used for sequencing.

WINFIELD ET AL.

of the age of evolution of the duplication.

Computer analyses of the 75 kb of sequence were performed using GRAIL (gene recognition analysis internet link) (Uberbacher and Mural 1991) to locate potential exonic regions and BLAST-N (Altschul et al. 1990) to identify sequence homology to other genes. Three genes have been detected in the 32-kb region upstream of glucocerebrosidase. One gene, *propin1*, has 65% sequence identity to rat secretory carrier membrane protein 37 (SCAMP37) (Brand and Castle 1993), whereas a second gene, *cote1*, has no close homology to any genes characterized in the GenBank database (Fig. 2A). Primers corresponding to putative exonic sequences identified by GRAIL were used to generate probes for isolating human DNA clones for these two genes from a brain cDNA library. A third gene, which was previously characterized as a protein kinase, *clk2*, and mapped to chromosome 1 (Hanes et al. 1994), has also been located upstream of *GBA*. Thus, the *GBA* locus and its flanking regions consist of at least seven functional genes and two pseudogenes, all of which, except metaxin, are transcribed in the same direction. A BLASTN search for EST homologies revealed segments corresponding to portions of *clk2*, *propin1*, and *cote1*, including several homologous to intronic regions of *clk2*.

cote1

cote1, the gene located nearest to *GBA*, is between 6 and 14 kb upstream of human *GBA*. Initially a 1.8-kb cDNA for *cote1* was isolated from a human hippocampal library. Hybridization of this cDNA to a human multiple tissue Northern blot (Clontech) revealed a 3.0- to 3.4-kb transcript in eight different tissues (Fig. 3). In addition, an ~6-kb transcript was present in brain tissue. A Northern blot of eight brain regions (Clontech) indicated that the larger transcript was only present in the cerebellum. Reexamination of the human genomic sequence farther upstream of the 1.8-kb cDNA revealed additional potential exons. Although the entire cDNA is predicted to be ~3.15 kb and to contain 12 exons (Fig. 2B), no full-length *cote1* human cDNA has been obtained.

propin1

GRAIL analyses of the original YAC sequence initially identified two exons of a second upstream gene, *propin1*, and probes from these exons were used to isolate a cosmid clone that extended farther upstream. A 1.5-kb cDNA, corresponding to a genomic sequence spanning ~6.4 kb in length and composed of nine exons (Fig. 2B), was isolated from a pSport plasmid human brain library, using exon-derived PCR-amplified probes. RACE (rapid amplification of cDNA ends) PCR placed the 5' end of the transcript at least 68 bp farther upstream than the longest isolated cDNA clone. *propin1* is located between 15 and 21 kb upstream of *GBA* and has 65.9% and 54.9% identity to the rat SCAMP37 cDNA-coding region and amino acid sequence, respectively (Brand and Castle 1993). Because rat SCAMP37 belongs to a family of proteins, the relatively low sequence homology suggests that the human gene may be orthologous to another member of the group.

Northern blot analyses using a human *propin1* cDNA probe demonstrated a 1.5- to 1.6-kb transcript in eight human tissues (Fig. 3) and in eight brain regions (Clontech). There is a SP1-

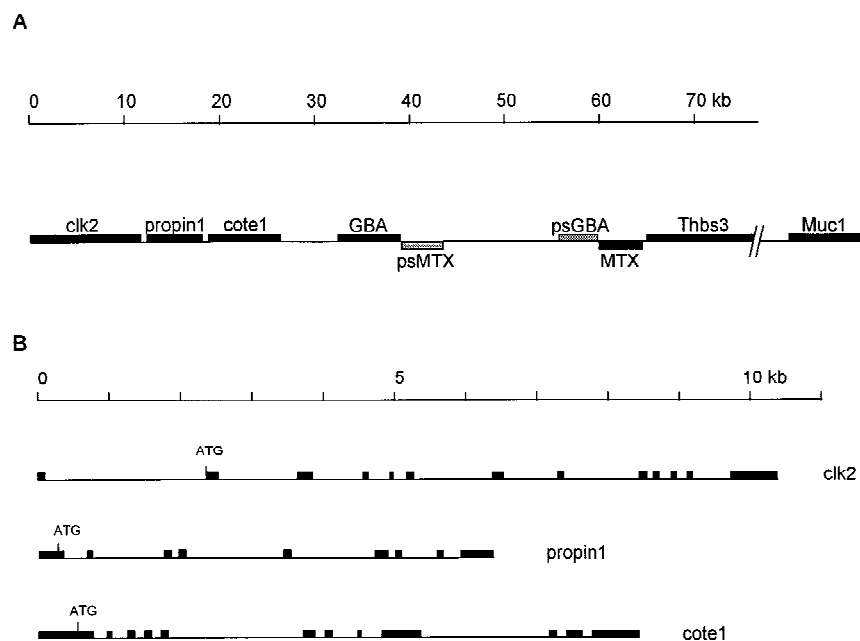


Figure 2 Schematic representation of the 75 kb of sequence surrounding the *GBA* gene. (A) Order of the seven genes and two pseudogenes at the locus. (B) Intron/exon organization of *clk2*, *propin1*, and *cote1*. Genes shown in boxes above the line are transcribed left to right. *MTX* is transcribed right to left.

THREE NEW GENES IN THE GAUCHER LOCUS

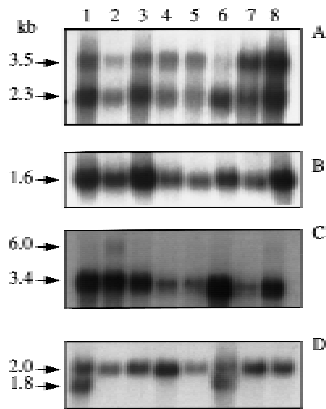


Figure 3 Human multitissue Northern blot hybridized to *clk2* cDNA (A), *propin1* cDNA (B), *cote1* cDNA (C), and β -actin cDNA (D). Lanes 1–8 are heart, brain, placenta, lung, liver, skeletal muscle, kidney, and pancreas, respectively.

binding element at the beginning of exon 1 and two in intron 1. The 3' end of the *propin1* transcript and the 5' end of *cote1* are ~500 bp apart.

Species Conservation

To determine the evolutionary conservation of these two new genes, the human cDNAs were hybridized to a Southern blot containing DNA from various vertebrates and budding yeast. Most of the exons of both human *propin1* and *cote1* are represented by a single *EcoRI* restriction fragment that is about the same size for each probe (data not shown). The entire region containing *propin1*, *cote1*, and *GBA* is syntenic in mouse and human (S. Win-

field, unpubl.). These findings reflect a conservation of the organization of *propin1*, *cote1*, and *GBA* and their proximity across species.

clk2 kinase

A BLAST search of the sequence 5' to *propin1* identified a third gene, *clk2* kinase (Hanes et al. 1994). The 13 exons of this gene are located between 21.5 and 32 kb 5' to *GBA* (Fig. 2B). This gene, as well as *propin1* and *cote1*, is transcribed in the same orientation as *GBA*. The 5' end of *clk2* kinase is within a CpG island, whereas the 3' end is <600 bp upstream of *propin1*.

When a *clk2* kinase probe, generated by PCR amplification of human brain cDNA using primers from exons 5 and 13, was hybridized to a multiple tissue Northern blot, bands of 2.3 and 3.5 (Fig. 3) were observed in each lane. The relative intensity of the two mRNAs varied from tissue to tissue (Figure 3). These transcripts differed in size from those isolated from leukocyte mRNA as described by Hanes et al. (1994).

Duplication of *GBA* and *MTX*

A duplication occurred at the human *GBA* locus, giving rise to pseudogenes for glucocerebrosidase and metaxin. The identification of the endpoints of the original duplication and an estimate of the age of the duplication were obtained from a comparison of the sequence in the intergenic region between *GBA* and *psGBA* with the sequence upstream of *GBA*.

Alignment of >4 kb of sequence downstream of both *GBA* and *psGBA* exhibited >97% homology. This region corresponds to most of *MTX* and *psMTX* (Fig. 2). The 3' end of the duplication is within exon 2 of metaxin. Although *psMTX* is missing all of exon 1 and part of exon 2, the remaining exonic sequences of *MTX* and *psMTX* show 99% homology.

The duplicated region, which extends ~5.5 kb 5' to *GBA* and 11.8 kb upstream of *psGBA*, can be aligned with 88% homology if several *Alu* inserts are removed from each region and if a 6.1-kb segment is removed from the 5' flanking sequence of the pseudogene (Fig. 4). The 5' end of this

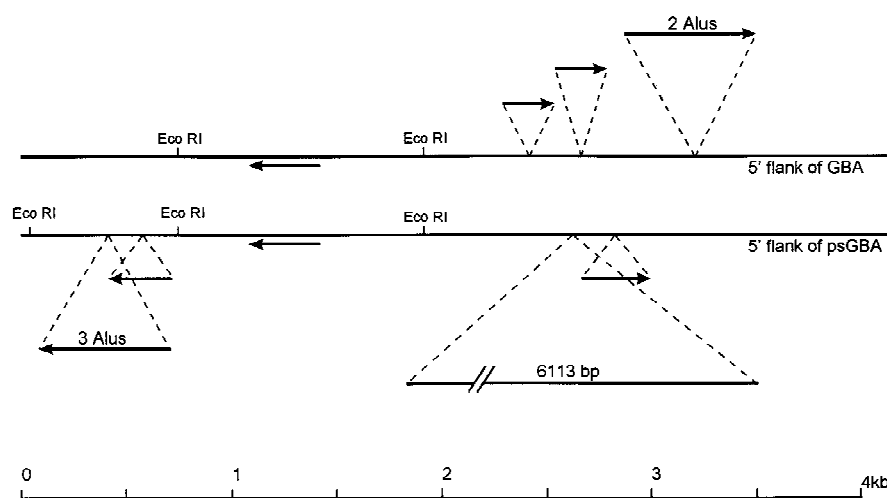


Figure 4 Schematic illustration of the alignment of 5' flanking regions of *GBA* and *psGBA*. Arrows represent *Alu* sequences. A large insert of 6113 bp contains eight complete *Alu* sequences and several partial *Alu* sequences. The remaining sequence has been aligned with 88% identity.

WINFIELD ET AL.

homology reflects the endpoint of the duplication and coincides with an *Alu* sequence poly(A) tail.

Other Features of the *GBA* Locus

There are at least 50 *Alu* sequences within the 75 kb of DNA characterized at this locus, with 15 complete and several partial *Alu* sequences in the 16 kb between *GBA* and *psGBA* (Fig. 4). Many of these *Alu* sequences have been inserted into the intergenic region and into introns of *GBA* (Horowitz et al. 1989) following the duplication event. Both a dinucleotide and a tetranucleotide repeat sequence have been identified in the regions flanking *GBA*.

DISCUSSION

Sequence analysis of the region surrounding the *GBA* gene reveals three genes located within 32 kb upstream of *GBA*. The physical relationship between *GBA* and *psGBA*, and between *MTX* and *psMTX*, as well as a delineation of the duplication that gives rise to the pseudogenes for both *GBA* and *MTX*, has been established. This region on chromosome 1q21 contains seven functional genes and two pseudogenes.

The presence of these closely clustered genes may have important implications for the study of patients with Gaucher disease. To date, the analysis of mutations in the *GBA* gene has not been adequate to explain the vast phenotypic heterogeneity encountered in the disorder. It is possible that there may be modifying genes located outside of the *GBA* region. However, for some time it has been appreciated that some mutant *GBA* alleles arose from recombination or fusion events occurring at the locus. The possibility that flanking genes may also be altered during these recombination events is particularly intriguing.

Alterations in genes near *GBA* could potentially contribute to the phenotypic heterogeneity observed in Gaucher patients, as has been seen in Hunter Syndrome, where patients with atypical symptoms have deletions encompassing portions of other genes near the human iduronate-2-sulfatase locus (Timms et al. 1997).

The delineation of the limits of the recombination event giving rise to the *psGBA* and *psMTX* pseudogenes, described by Long et al. (1996), was based on the homology on the 3' ends of *GBA* and *psGBA*. Based on the alignment of the 5' flanking sequences of *GBA* and *psGBA*, an alternative site for this recombination located 24 bp farther 5' is also possible.

Alignment of the duplicated regions permits an estimate of the timing of the duplication. Because

both the human and the rhesus monkey contain the duplication, we suggest that it occurred prior to the divergence of the Great Apes and Old World monkeys 25 million years ago. Based on Miyamoto's calculation of time since divergence of primate species, the duplication event occurred ~36–48 million years ago (Miyamoto et al. 1988). Because the *Alu* sequence present in both copies of the duplication is a member of the Sx family, which is ~40 million years old (Makalowski et al. 1994), the duplication event occurred no more than 40 million years ago. The recombination events at the *GBA* locus represent another example of regional duplications occurring during human evolution that can contribute to human pathology (Timms et al. 1997).

Transcripts from all three of the newly identified genes upstream of *GBA* are observed in all tissues studied (Fig. 3). *cote1*, the gene nearest to *GBA*, lacks homology to any known gene, and its function is not known. The largest open reading frame encodes 669 amino acids with two potential N-glycosylation sites, a leucine zipper, and multiple potential phosphorylation sites and N-myristoylation sites. Because of the close proximity of *cote1* to *GBA*, studies of its expression in patients with Gaucher disease are a priority.

Although *propin1* has some homology to SCAMP37, its function is also unknown. It retains specific motifs observed in the rat SCAMP37 amino acid sequence, including an α -helical leucine zipper and one zinc finger domain. SCAMPs are components of post-Golgi membranes that function as recycling carriers to the cell surface. They have broad tissue distribution, subcellular localization, and are present in multiple pathways. If *propin1* does encode a SCAMP, it is intriguing to speculate that such a protein could be involved in the intracellular transport of lysosomal glucocerebrosidase.

The human *clk2* kinase gene that we have identified within this region had previously been localized to chromosome 1 and has characteristics of a serine/threonine kinase. In our study, Northern blot analyses of human tissues clearly demonstrate two transcripts hybridizing to a *clk2* kinase cDNA probe, but it is not clear whether the larger species is an alternatively spliced *clk2* transcript or results from the cross hybridization of another protein.

Our current study demonstrates that the region surrounding the *GBA* is far more complex than previously appreciated, containing seven genes and two pseudogenes. Transgenic and knockout mice are being generated in hope that they may give insight into the function of *cote1*, *propin1*, and *clk2*. Common locus control, regulatory elements, or

THREE NEW GENES IN THE GAUCHER LOCUS

overlapping transcripts could coordinately affect expression of several of these genes and, in the case of Gaucher disease, may influence the expression level of glucocerebrosidase. The potential involvement of contiguous gene effects in explaining the more unusual phenotypes encountered among Gaucher patients requires further study.

METHODS

Isolation of Genomic Clones

The Center for Genetics in Medicine (CGM) YAC library (Burke and Olson 1991) was screened by PCR amplification of ordered arrays of pooled clones (Green and Olson 1990) using a primer pair specific for the human *GBA* gene. A YAC clone, CGY2981, contained both *GBA* and *psGBA*. A *his3* mutation was introduced into the yeast from strain MB11, and the *his5* mutation removed by standard mating procedures (Sherman 1991). The resulting strain, MNG1, was transformed with fragmentation vectors pBP108 and pBP109 (Pavan et al. 1991) to reduce the insert size. One of the derivatives, MNG4, with an insert of ~85 kb, was confirmed to contain both *GBA* and *psGBA* and, following partial *Sau3AI* digestion, was subcloned to Lambda Dash (Stratagene, La Jolla, CA). The full-length YAC clone, MNG1, following partial *Sau3AI* digestion, was also subcloned into SuperCos (Stratagene).

Several λ subclones that hybridized to a human 1.6-kb *GBA* cDNA were subcloned into pGEM7zf+ (Promega, Madison, WI) for sequencing. Plasmid subclones were ordered using sequence across the junction points in the λ DNA. A cosmid subclone of the YAC containing 16 kb of DNA upstream of *GBA* was also subcloned to pGEM7zf+ and pGEM11zf+ for sequencing (Fig. 1).

Complementary DNA Clones

A human hippocampal cDNA library (Lambda ZapII) was obtained from Stratagene. The human brain plasmid library in pCMV-SPORT was from Life Technologies (Gaithersburg, MD).

RACE PCR was used to determine the 5' ends of cDNAs. PCR amplification was carried out using human brain cDNA ligated to an anchor (Clontech) or on cDNA isolated from the pSPORT human brain library, with anchor or vector primers and nested gene-specific primers.

DNA Sequence Analysis

Plasmid and cosmid DNA were prepared by either standard alkaline lysis (Maniatis et al. 1982), Perfect Prep kits (5 Prime \rightarrow 3 Prime, Boulder, CO), or in some cases by CsCl gradient purification. Sequencing was performed on alkaline-denatured, double-stranded template using the Sequenase Reagent kit (U.S. Biochemical, Inc., Cleveland, OH) or on λ subclones using the Circumvent ThermoCycle Dideoxy DNA Sequencing kit (New England Biolabs, Beverly, MA) according to manufacturer's protocols. PCR products, cosmids, and subclones were sequenced using a Perkin-Elmer Applied Biosystems model 373A automated sequencer with the FS enzyme system and dye terminator chemistry according to the manufacturer's protocols (Perkin Elmer, Foster City, CA). Oligonucleotides were synthesized on an Expedite (Perseptive Bio-

systems, Framingham, MA) or Cyclone Synthesizer (Milligen Biosearch, Milford, MA) and used without purification. All sequence was determined in both directions, entered into PC-Gene, and analyzed by GRAIL (Uberbacher and Mural 1991) to determine potential coding areas. A BLAST-N (Altschul et al. 1990) comparison of putative exon sequences with the GenBank database was used to identify homologies. The BLAST-X (Altschul et al. 1990) program was also used to compare the predicted amino acid sequence to the protein database.

Northern and Zooblot Hybridization

Multiple human tissue Northern blots and multiple species (Zoo) blots were obtained from Clontech Laboratories. Hybridization was carried out according to the manufacturer's protocol using cDNA from *clk2* kinase, *propin1*, *cote1*, and β -actin as probes.

ACKNOWLEDGMENTS

We thank Collaborative Research, Inc., for providing the YAC clone, Dr. Roger Reeves for the YAC fragmenting vectors, and Dr. Miles Brennan for the yeast strain MB11. We also acknowledge Dr. Wojciech Makalowski for his help with *Alu* characterization, and Elizabeth Alzona and Kay Kuhns for their assistance in the preparation of this manuscript.

The publication costs of this article were defrayed in part by payment of page charges. This article must therefore be hereby marked "advertisement" in accordance with 18 USC section 1734 solely to indicate this fact.

REFERENCES

- Adolph, K.W., G.L. Long, S. Winfield, E.I. Ginns, and P. Bornstein. 1995. Structure and organization of the human thrombospondin 3 gene (Thbs3). *Genomics* 27: 329-336.
- Altschul, S.F., W. Gish, W. Miller, E.W. Myers, and D.J. Lipman. 1990. Basic local alignment search tool. *J. Mol. Biol.* 215: 403-410.
- Armstrong, L.C., T. Komiya, B.E. Bergman, K. Mihara, and P. Bornstein. 1997. Metaxin is a component of a preprotein import complex in the outer membrane of the mammalian mitochondrion. *J. Biol. Chem.* 272: 6510-6518.
- Beutler, E. and T. Gelbart. 1997. Hematologically important mutations: Gaucher disease. *Blood Cells Mol. Dis.* 23: 2-7.
- Beutler, E. and G.A. Grabowski. 1995. Gaucher disease. In *The metabolic basis of inherited disease* (ed. C.R. Scriver, A.L. Beaudet, W.S. Sly, D. Valle), pp. 2641-2670. McGraw-Hill, New York, NY.
- Bornstein, P., C.E. McKinney, M.E. LaMarca, S. Winfield, T. Shingu, S. Devarayalu, H.L. Vos, and E.I. Ginns. 1995. Metaxin, a gene contiguous to both thrombospondin 3 and glucocerebrosidase, is required for embryonic development in the mouse: Implications for Gaucher disease. *Proc. Natl. Acad. Sci.* 92: 4547-4551.
- Brand, S.H. and J.D. Castle. 1993. SCAMP 37, a new marker within the general cell surface recycling system. *EMBO J.* 12: 3753-3761.
- Burke, D.T. and M.V. Olson. 1991. Preparation of clone libraries in yeast artificial-chromosome vectors. In *Methods in enzymology. Guide to yeast genetics and molecular biology*

WINFIELD ET AL.

- (ed. C. Guthrie and G.R. Fink), pp. 251–270. Academic Press, San Diego, CA.
- Choudary, P.V., E.I. Ginns, and J.A. Barranger. 1985. Molecular cloning and analysis of the human β -glucocerebrosidase gene. *DNA* 4: 74.
- Cormand, B., M. Montfort, L. Chabás, L. Vilageliu, and D. Grinberg. 1997. Genetic fine localization of the β -glucocerebrosidase (GBA) and prosaposin (PSAP) genes: Implications for Gaucher disease. *Hum. Genet.* 100: 75–79.
- Eyal, N., S. Wilder, and M. Horowitz. 1990. Prevalent and rare mutations among Gaucher patients. *Gene* 96: 277–283.
- Frederickson, D.S. and H.R. Sloan. 1972. Glucosylceramide lipidoses: Gaucher's disease. In *The metabolic basis of inherited disease* (ed. J.B. Stanbury, J.B. Wyngarden, and D.S. Frederickson), pp. 730–759. McGraw-Hill, New York, NY.
- Ginns, E.I., P.V. Choudary, S. Tsuji, B. Martin, B. Stubblefield, J. Sawyer, J. Hozier, and J.A. Barranger. 1985. Gene mapping and leader polypeptide sequence of human glucocerebrosidase: Implications for Gaucher disease. *Proc. Natl. Acad. Sci.* 82: 7101–7105.
- Green, E.D. and M.V. Olson. 1990. Systematic screening of yeast artificial-chromosome libraries by use of the polymerase chain reaction. *Proc. Natl. Acad. Sci.* 87: 1213–1217.
- Hanes, J.J., H. von der Kammer, J.J. Kludiny, and K.H. Scheit. 1994. Characterization by cDNA cloning of two new human protein kinases: Evidence by sequence comparison for a new family of mammalian protein kinases. *J. Mol. Biol.* 244: 665–672.
- Horowitz, M., S. Wilder, Z. Horowitz, O. Reiner, T. Gelbart, and E. Beutler. 1989. The human glucocerebrosidase gene and pseudogene: Structure and evolution. *Genomics* 4: 87–96.
- Latham, T., G.A. Grabowski, B.D.M. Theophilus, F.I. Smith. 1990. Complex alleles of the acid β -glucocerebrosidase gene in Gaucher disease. *Am. J. Hum. Genet.* 47: 79–86.
- Ligtenberg, M.J.L., H.L. Vos, M.C. Gennissen, and J. Hilkens. 1990. Episialin, a carcinoma-associated mucin, is generated by a polymorphic gene encoding splice variants with alternative amino termini. *J. Biol. Chem.* 265: 5573–5578.
- Long, G.L., S. Winfield, K.W. Adolph, E.I. Ginns, and P. Bornstein. 1996. Structure and organization of the human metaxin gene (MTX) and pseudogene. *Genomics* 33: 177–184.
- Makalowski, W., G.A. Mitchell, and D. Labuda. 1994. Alu sequences in the coding regions of mRNA: A source of protein variability. *Trends Genet.* 10: 188–193.
- Maniatis, T., E.F. Fritsch, and J. Sambrook. 1982. *Molecular cloning: A laboratory manual*. Cold Spring Harbor Laboratory, Cold Spring Harbor, NY.
- Miyamoto, M.M., B.F. Koop, J.L. Slightom, M. Goodman, and M.R. Tennant. 1988. Molecular systematics of higher primates: Genealogical relations and classification. *Proc. Natl. Acad. Sci.* 85: 7627–7631.
- NIH Technology Assessment Panel on Gaucher Disease. 1996. Gaucher disease: Current issues in diagnosis and treatment. *J. Amer. Med. Assoc.* 275: 548–553.
- Pavan, W.J., P. Hieter, D. Sears, A. Burkhoff, and R.H. Reeves. 1991. High-efficiency yeast artificial chromosome fragmentation vectors. *Gene* 106: 125–127.
- Sherman, F. 1991. Getting started with yeast. In *Methods in enzymology. Guide to yeast genetics and molecular biology* (ed. C. Guthrie and G.R. Fink), pp. 3–21. Academic Press, San Diego, CA.
- Sidransky, E., D.M. Sherer, and E.I. Ginns. 1992. Gaucher disease in the neonate: A distinct Gaucher phenotype is analogous to a mouse model created by targeted disruption of the glucocerebrosidase gene. *Pediatr. Res.* 32: 494–498.
- Sidransky, E., A. Bottler, B. Stubblefield, and E.I. Ginns. 1994. DNA mutational analysis of type 1 and type 3 Gaucher patients: How well do mutations predict phenotype? *Hum. Mutat.* 3: 25–28.
- Timms, K.M., M.-L. Bondeson, M.A. Ansari-Lari, K. Lagerstedt, D.M. Muzny, S.P. Dugan-Rocha, D.L. Nelson, U. Pettersson, and R.A. Gibbs. 1997. Molecular and phenotypic variation in patients with severe Hunter syndrome. *Hum. Mol. Genet.* 6: 479–486.
- Tsuji, S., P.V. Choudary, B.M. Martin, B.K. Stubblefield, J.A. Mayor, J.A. Barranger, and E.I. Ginns. 1987. A mutation in the human glucocerebrosidase gene in neuropathic Gaucher's disease. *N. Engl. J. Med.* 316: 570–575.
- Tybulewicz, V.L.J., M.L. Tremblay, M.E. LaMarca, R. Willemsen, B. Stubblefield, S. Winfield, B. Zablocka, E. Sidransky, B.M. Martin, S.P. Huang, K.A. Mintzer, H. Westphal, R.C. Mulligan, and E.I. Ginns. 1992. Animal model of Gaucher's disease from targeted disruption of the mouse glucocerebrosidase gene. *Nature* 357: 407–410.
- Ueberbacher, E.C. and R.J. Mural. 1991. Locating protein-coding regions in human DNA sequences by a multiple sensor-neural network approach. *Proc. Natl. Acad. Sci.* 88: 11261–11265.
- Vos, H.L., S. Devarayalu, Y. de Vries, and P. Bornstein. 1992. Thrombospondin 3 (Thbs3), a new member of the thrombospondin gene family. *J. Biol. Chem.* 267: 12192–12196.
- Vos, H.L., M. Mockensturm-Wilson, P.M.L. Rood, A.M.C.E. Maas, T. Duhig, S.J. Gendler, and P. Bornstein. 1995. A tightly organized conserved gene cluster on mouse chromosome 3 (E3-F1). *Mamm. Genome* 6: 820–822.
- Willemsen, R., V. Tybulewicz, E. Sidransky, W.K. Eliason, B.M. Martin, M.E. LaMarca, A.J.J. Reuser, M. Tremblay, H. Westphal, R.C. Mulligan, and E.I. Ginns. 1995. A biochemical and ultrastructural evaluation of the type 2 Gaucher mouse. *Mol. Chem. Neuropath.* 24: 179–192.
- Zimran, A., J. Sorge, E. Gross, M. Kubitz, C. West, and E. Beutler. 1989. Prediction of severity of Gaucher's disease by identification of mutations at DNA level. *Lancet* 2: 349–352.
- Zimran, A., J. Sorge, E. Gross, M. Kubitz, C. West, and E. Beutler. 1990. A glucocerebrosidase fusion gene in Gaucher disease. Implications for the molecular anatomy, pathogenesis, and diagnosis of this disorder. *J. Clin. Invest.* 85: 219–222.

Received June 13, 1997; accepted in revised form August 29, 1997.