



Corrigendum: Extreme expansion of the olfactory receptor gene repertoire in African elephants and evolutionary dynamics of orthologous gene groups in 13 placental mammals

Yoshihito Niimura, Atsushi Matsui and Kazushige Touhara

Genome Res. 2015 25: 926

Open Access Freely available online through the *Genome Research* Open Access option.

License

Email Alerting Service Receive free email alerts when new articles cite this article - sign up in the box at the top right corner of the article or [click here](#).



To subscribe to *Genome Research* go to:
<https://genome.cshlp.org/subscriptions>

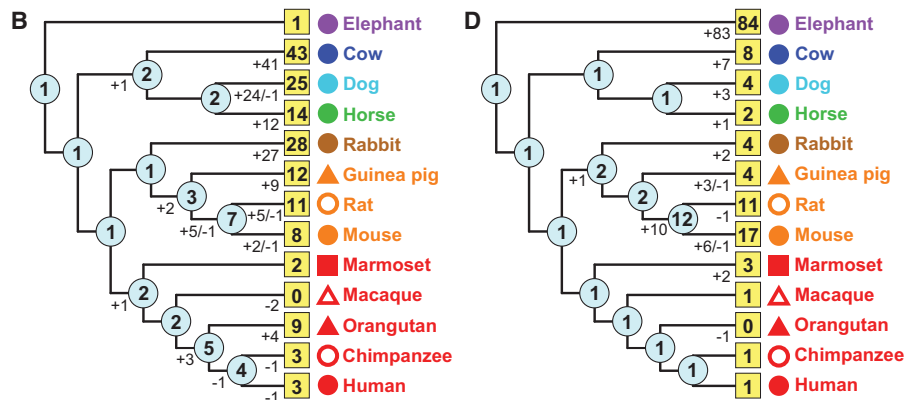
Published by Cold Spring Harbor Laboratory Press

Corrigendum

Genome Research 24: 1485–1496 (2014)**Corrigendum: Extreme expansion of the olfactory receptor gene repertoire in African elephants and evolutionary dynamics of orthologous gene groups in 13 placental mammals**

Yoshihito Niimura, Atsushi Matsui, and Kazushige Touhara

In the above-mentioned article, the colored symbols in Figure 3B and D are wrongly placed. In addition, in Figure 3B the numbers of genes for dogs and horses are interchanged. The corrected panels B and D in Figure 3 are provided below. This correction does not affect any of the conclusions of the paper. The authors apologize for any confusion caused by these errors.



doi: 10.1101/gr.193219.115